



Y3 Science – Plants

Parts of a Plant



Flowers - They have colour and smell to attract insects



Leaves - They change carbon dioxide and water into food for the plant and oxygen



Stem - They hold the plant up and carry water from the roots to the rest of the plant



Roots - They hold the plant in the ground and soak up water and nutrients from the soil

To grow and survive, plants need:

- Light, water and carbon dioxide. This is so that they can make their own food.
- Warmth. If plants get too hot or cold they will die.

How does a plant get water?

- The roots take up water from the soil. The water travels through the stem of the plant to the leaves

Vocabulary

Petal	Coloured parts of a flower that attract insects and birds.
Stamen	The male part of a flower containing pollen.
Carpel	The female part of a flower containing an egg.
Fertilisation	When pollen and an egg join together to make a seed.
Dispersal	Spreading things over a wide area
Pollen	A powdery yellow substance from the male part of the flower
Pollination	The transfer of pollen from the male part of a plant to the female part of a plant.
Nectar	A sweet fluid in flowers that attracts insects.

How do seeds get to the soil so they can grow?



Wind: The seeds are blown from the plant by the wind.



Animals: They are eaten by animals (often in fruit) and then pooped out.

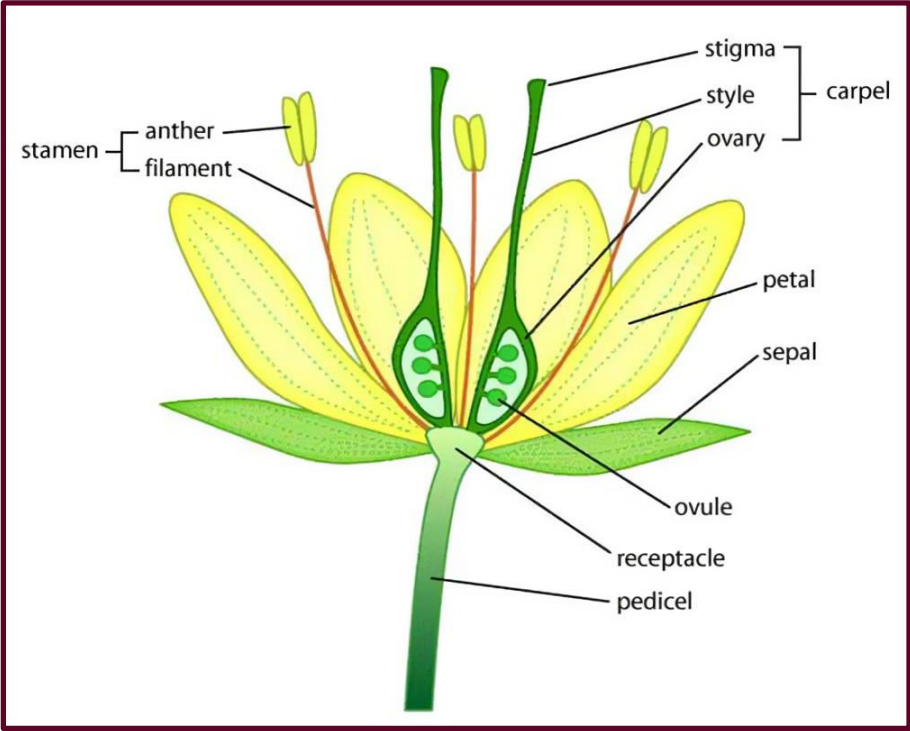


Explosion: Dry seed pods split open and shoot out the seeds.



Y3 Science – Plants

Parts of a Flower



A flower has male and female parts. The male part is the stamen and the female part is called the carpel.

The flower exists to make new plants. The flower contains pollen and eggs which make seeds.

The Importance of Flowers

For a plant to grow a new seed, pollen needs to get to its carpel from another plant.

When the pollen joins the egg of the new flower a seed or many seeds are formed.

How does pollen get from one plant to another?



Insects: The insect goes to the first flower looking for nectar. Pollen gets stuck to it. When it goes to another flower the pollen sticks to that flower.



Wind: Pollen is blown from one flower and when it lands on another it sticks to that.