

## Y4 A2 WEEK 1 MATHS LESSON 2

**LO: To read and write time in analogue and digital.**

**Starter:** Addition – try completing these questions using any addition strategy you think is the quickest.

### Not crossing 10

$243 + 14 =$

$344 + 12 =$

$167 + 12 =$

$111 + 23 =$

### Crossing 10 (Adding 1 digit)

$277 + 4 =$

$548 + 8 =$

$455 + 6 =$

$238 + 5 =$

### Crossing 10 (Adding 2 digits)

$346 + 26 =$

$128 + 14 =$

$154 + 16 =$

$167 + 14 =$

### Crossing 10 and 100

$199 + 1 =$

$198 + 4 =$

$178 + 26 =$

$167 + 35 =$

**Task 1:** In today's lesson we are going to be looking at converting between analogue clocks (yesterday's lesson) to digital clock. A digital clock is what you might see on an alarm clock, a phone, a tablet, the TV or a computer in the bottom right hand corner.

A digital clock always has four digits separated by a colon with the hour of the left hand side and the minutes on the right hand side. A 12-hour digital clock indicates whether it is AM or PM. AM is before midday between 12:00AM – 11:59AM and PM is before midnight between 12:00PM – 11:59PM. Midnight = 12:00AM Midday = 12:00PM

Look at the two clocks below, here you can see the time on an analogue clock then in words and converting into digital.



17 minutes past 8

08:17AM



28 minutes past 11

11:28AM



22 minutes past 9

09:22PM



14 minutes past 12

12:14PM



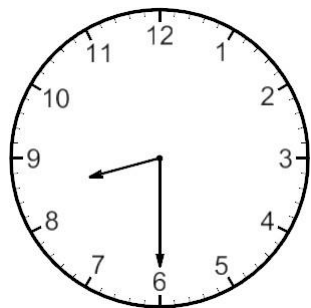
## Task 2: Independent task

This is Lola – below is a plan of her usual day whilst at home. Look at the analogue clocks shown and write them in the digital format. Do not forget that each digit time needs to have four digits separated by a colon with the hour first and then the minutes.

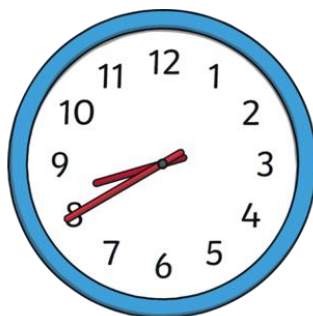
Can you complete the rest of my day using digital times?



This is the time Lola gets up in the morning.



This is the time Lola eats her breakfast.



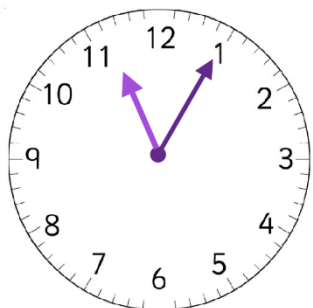
This is the time Lola starts her maths home learning.



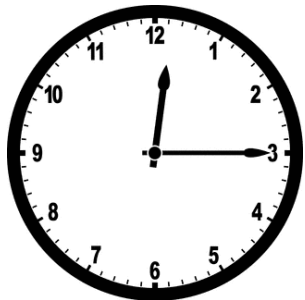
This is the time Lola starts her reading on Active Learn.



This is Lola's first break time.



This is Lola's lunch time.



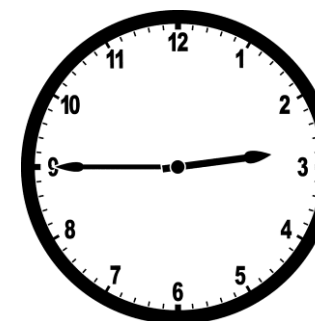
This is the time that Lola starts her English work.



This is Lola's second break time.



Time for Purple Mash on Lola's tablet.



Lola has finished for the day.

