

2019 KS2 School Dashboard

for governors & school leaders

Produce custom dashboards
at fftaspire.org

The Croft Primary School

LA Swindon DFE 8662006 Produced September 2019 Version 1

What it is

Seven easy-to-use reports that help governors and school leaders to evaluate school performance using the latest 2019 DFE school performance indicators.

What it tells you

- What are the strengths and areas for improvement in your school?
- How does attainment and pupil progress compare to the national average over the last three years?
- How are you performing in different subjects?
- Do you have any under-performing groups of pupils?
- How might the context of your school affect performance?
- How does pupil attendance compare to the national average?

About the data shown

1 2 3

Actual results

Actual results for your school, using a range of measures such as averages and thresholds.



Gauges

These display headline indicators and whether actual results and pupils' progress are in line with, or significantly above or below, the national average.

ESTIMATED

1 2 3

Pupil progress

The value added progress that your pupils have made from one key stage to the next. FFT compares your actual results to the estimated results based on the progress of similar pupils nationally.



Statistical significance

Green plus signs and red minus signs highlight where either actual results or pupils' progress is significantly above or below the national average.



Trends

The dashboard analyses school performance over 3-5 years. Any significant year-on-year improvement is highlighted using an up arrow. Significant declines in performance are highlighted with a down arrow.



Strengths & weaknesses

These highlight key pupil groups and subjects where progress is above or below the national average.

Working in partnership with



Data sources

Generated from FFT Aspire which includes data sourced from the DfE (National Pupil Database) and data calculated by FFT. FFT is accredited as a DfE supplier to receive early access to ASP data. Headline performance indicators will be consistent with the DfE School Performance Tables and ASP.

Overview

KS2 Attainment 2019 · Actual results

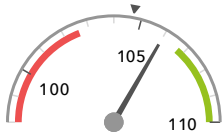
52 pupils

Average Scaled Score (Re, Ma)

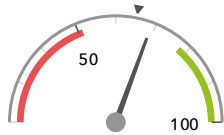
% Expected standard+ (Re, Wr, Ma)

106.0

69%



In line with the national average (104.7) ◀



In line with the national average (65%) ◀

KS2 Progress 2019 · Value Added

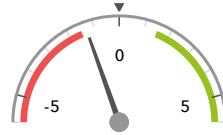
46 matched pupils

Average Scaled Score (Re, Ma)

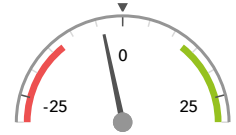
% Expected standard+ (Re, Wr, Ma)

-1.3

-4%



In line with the national average (0) ◀



In line with the national average (0%) ◀

KS2 higher and lower performing pupil groups 2019

	Higher performing	Lower performing
Overall achievement pupil progress	First language not English (10) Spring Term (19)	Autumn Term (14) ⚠ SEN Support (9) First language English (35) ⚠
KS2 reading achievement pupil progress	Middle attainers (17) Spring Term (19) FSM (ever) (7)	Autumn Term (14) Higher attainers (26) First language not English (10)
KS2 writing achievement pupil progress	FSM (ever) (7) FSM (in last 6 years) (7) Middle attainers (17)	Autumn Term (14) First language not English (10) SEN Support (9)
KS2 mathematics achievement pupil progress	First language not English (10) Spring Term (19)	Autumn Term (14) ⚠ SEN Support (9) First language English (35) ⚠
KS2 grammar, punctuation & spelling achievement pupil progress	First language not English (10)	SEN Support (9) Autumn Term (14) ⚠ First language English (35) ⚠

Attainment & progress

KS2 Attainment 2019

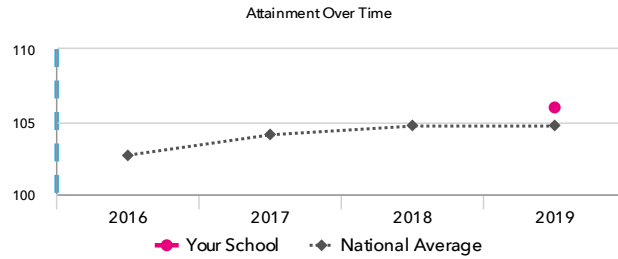
52 pupils

Average Scaled Score (Re, Ma)

106.0



In line with the national average (104.7)



KS2 Progress 2019

46 matched pupils

Average Scaled Score (Re, Ma)

-1.3



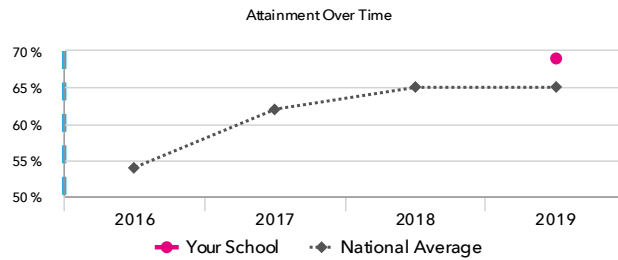
In line with the national average (0)

% Expected standard+ (Re, Wr, Ma)

69%



In line with the national average (65%)



% Expected standard+ (Re, Wr, Ma)

-4%



In line with the national average (0%)

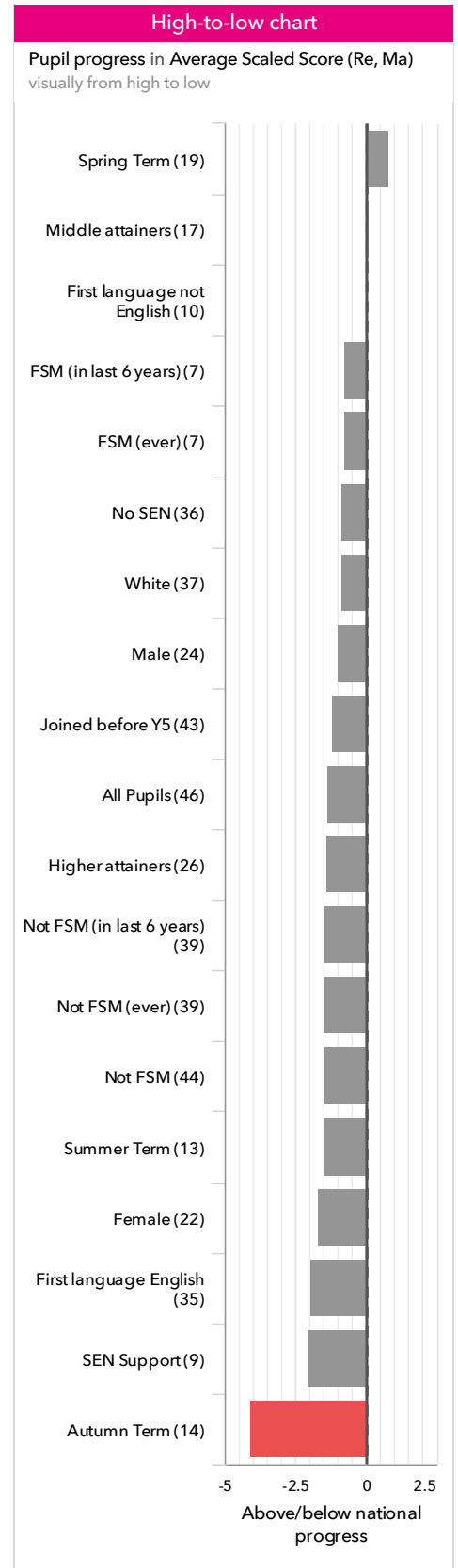
KS2 performance summary

	Actual results			Pupil progress		
	2017	2018	2019	2017	2018	2019
Number of Pupils / % Matched	-	-	52	-	-	88%
% Expected standard+ (Re, Wr, Ma)	-	-	69%	-	-	-4%
% Higher standard (Re, Wr, Ma)	-	-	14%	-	-	-5%
Average Scaled Score (Re, GPS, Ma)	-	-	106.1	-	-	-1.9
Average Scaled Score (Re, Ma)	-	-	106.0	-	-	-1.3
% Expected standard+ Reading	-	-	81%	-	-	+5%
% Higher standard Reading	-	-	44%	-	-	+8%
Scaled Score Reading	-	-	106.8	-	-	+0.1
% Expected standard+ Writing	-	-	82%	-	-	-1%
% Higher standard Writing	-	-	20%	-	-	-14%
Scaled Score Writing	-	-	102.2	-	-	-1.6
% Expected standard+ Maths	-	-	79%	-	-	-6%
% Higher standard Maths	-	-	29%	-	-	-9%
Scaled Score Maths	-	-	105.2	-	-	-2.5
% Expected standard+ Grammar, Punctuation & Spelling	-	-	77%	-	-	-6%
% Higher standard Grammar, Punctuation & Spelling	-	-	38%	-	-	-12%
Scaled Score Grammar, Punctuation & Spelling	-	-	107.1	-	-	-2.3
% Expected standard+ Science	-	-	82%	-	-	-

Pupil groups

KS2 Pupil groups performance 2019

	Pupils	Actual results			Pupil progress			
		Average Scaled Score (Re, Ma)	% Expected standard+ (Re, Wr, Ma)	% Higher standard (Re, Wr, Ma)	Average Scaled Score (Re, Ma)	% Expected standard+ (Re, Wr, Ma)	% Higher standard (Re, Wr, Ma)	
Summary	All Pupils	52	106.0	69%	14%	-1.3	-4%	-5%
Gender	Male	27	105.0	58%	8%	-1.0	-6%	-4%
	Female	25	107.0	80%	20%	-1.7	-1%	-6%
DFE Prior Attainment	Higher attainers	26	109.4	88%	19%	-1.4	-7%	-12%
	Middle attainers	17	103.2	59%	6%	+0.1	+1%	+4%
	Lower attainers	3	94.0	0%	0%	-9.1	-5%	-0%
Pupil Premium	FSM (in last 6 years)	7	102.3	57%	0%	-0.7	+15%	-2%
	Not FSM (in last 6 years)	42	107.0	71%	17%	-1.4	-7%	-6%
FSM	FSM	2	104.5	100%	0%	+1.3	+44%	-2%
	Not FSM	47	106.4	68%	15%	-1.5	-6%	-5%
FSM Ever	FSM (ever)	7	102.3	57%	0%	-0.7	+15%	-2%
	Not FSM (ever)	42	107.0	71%	17%	-1.4	-7%	-6%
Term of Birth	Autumn Term	16	103.9	63%	6%	-4.1	-17%	-10%
	Spring Term	20	108.3	90%	15%	+0.8	+11%	-8%
	Summer Term	16	105.1	47%	20%	-1.5	-11%	+4%
SEN Group	SEN Support	9	100.5	22%	0%	-2.0	-15%	-0%
	EHC Plan	1	-	0%	0%	-	-5%	-0%
	No SEN	42	107.1	80%	17%	-0.8	-1%	-6%
EAL	First language not English	14	107.6	77%	15%	-0.0	+1%	-11%
	First language English	35	106.0	66%	14%	-2.0	-8%	-4%
Mobility	Joined in Y5 or Y6	7	101.3	50%	0%	-3.3	-20%	-22%
	Joined before Y5	45	106.7	71%	16%	-1.2	-3%	-4%
Ethnicity	White	39	106.4	72%	15%	-0.9	-2%	-4%
	Black Caribbean	2	89.5	0%	0%	-12.9	-18%	-0%
	Black African	1	102.5	100%	0%	-6.5	+8%	-13%
	Indian	3	97.5	33%	0%	-2.7	+2%	-42%
	Pakistani	2	114.3	100%	0%	+4.2	+7%	-28%
	Any Other	3	109.7	67%	33%	-0.9	-28%	+10%
	Unknown	2	109.5	100%	0%	-	-	-



Subjects

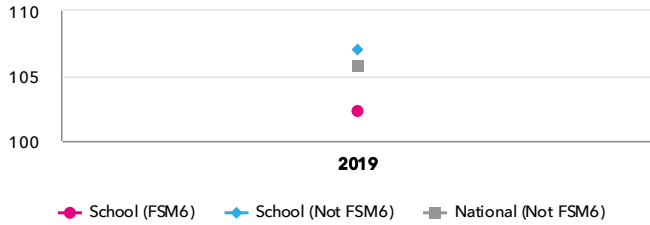
KS2 subject performance 2019

	Actual results			Pupil progress			Actual results over time		
	2017	2018	2019	2017	2018	2019			
Number of Pupils / % Matched	-	-	52	-	-	88%			
Reading									
% Expected standard+	-	-	81%	-	-	+5%			
% Higher standard	-	-	44% +	-	-	+8%			
Scaled Score	-	-	107 +	-	-	+0.1			
Writing									
% Expected standard+	-	-	82%	-	-	-1%			
% Higher standard	-	-	20%	-	-	-14% -			
Scaled Score	-	-	102	-	-	-1.6			
Maths									
% Expected standard+	-	-	79%	-	-	-6%			
% Higher standard	-	-	29%	-	-	-9%			
Scaled Score	-	-	105	-	-	-2.5 -			
Grammar, Punctuation & Spelling									
% Expected standard+	-	-	77%	-	-	-6%			
% Higher standard	-	-	38%	-	-	-12%			
Scaled Score	-	-	107	-	-	-2.3 -			
Science									
% Expected standard+	-	-	82%	-	-	-			

Disadvantaged pupils

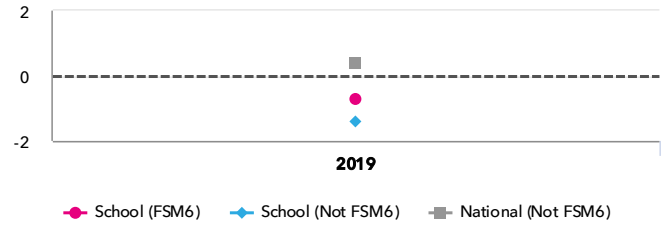
KS2 attainment for disadvantaged pupils 2019

Average Scaled Score (Re, Ma)



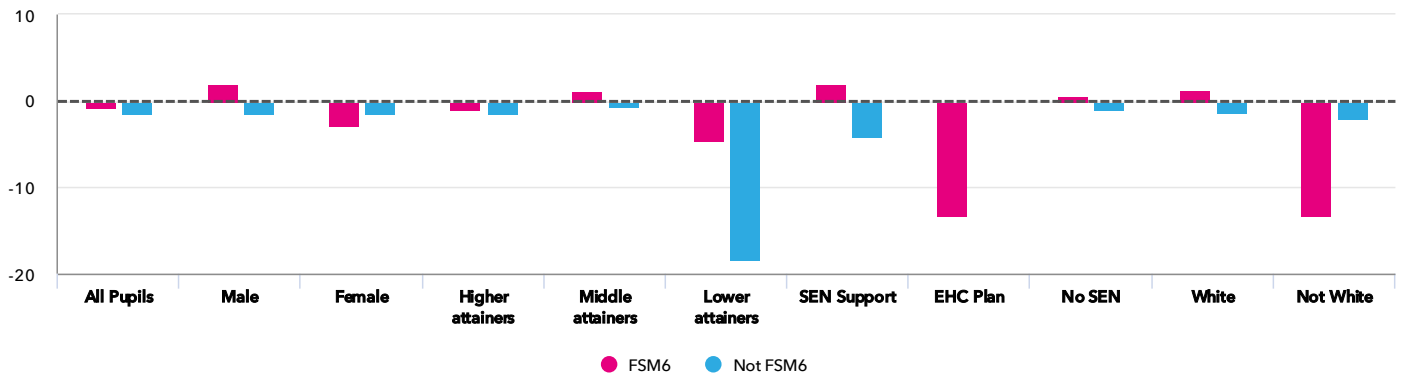
KS2 progress for disadvantaged pupils 2019

Average Scaled Score (Re, Ma)



Progress gap

Average Scaled Score (Re, Ma)

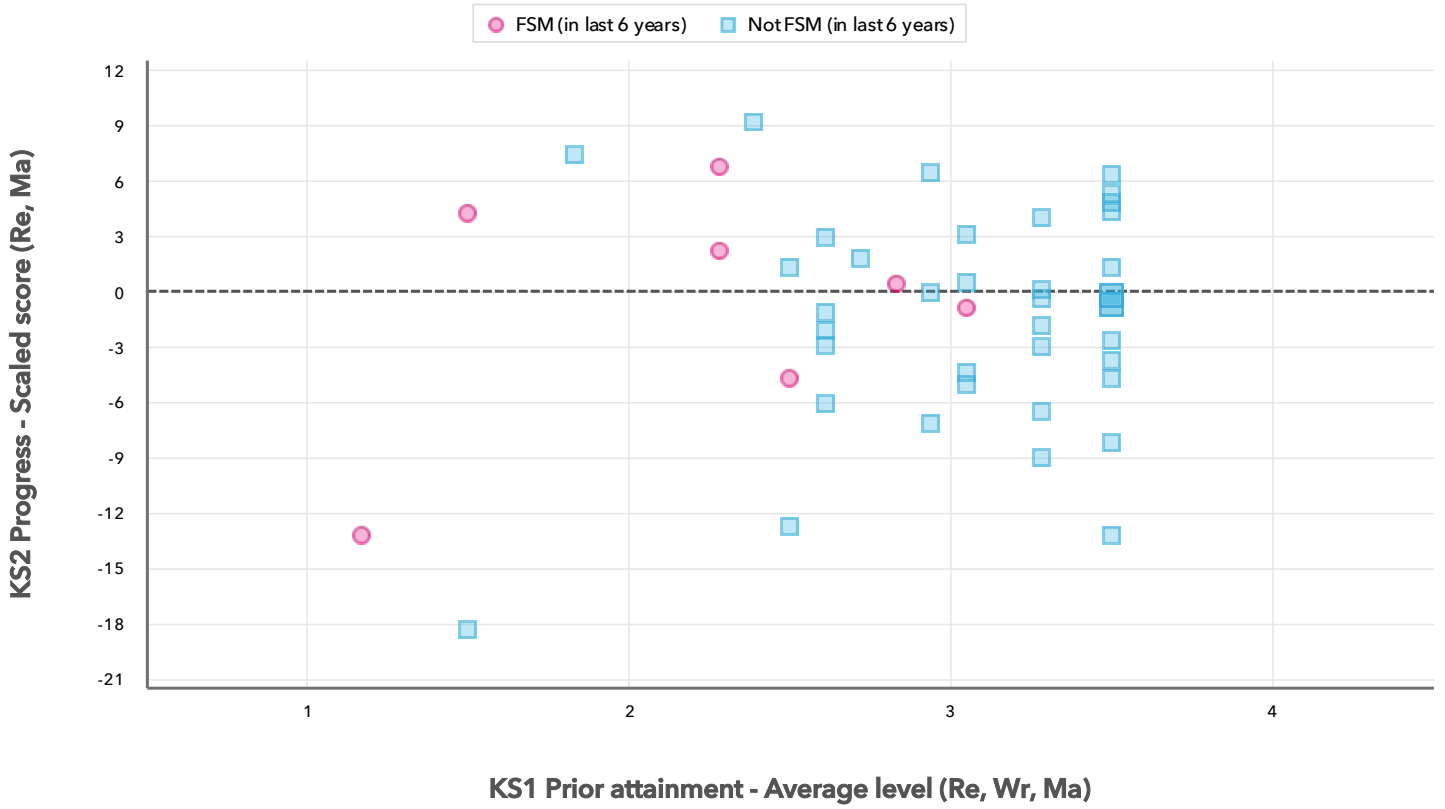


Attainment & progress

Pupils	Attainment			Progress					
	FSM6	Not FSM6	Average Scaled Score (Re, Ma)			FSM6	Not FSM6	Gap	
			FSM6	Not FSM6	Gap				
Summary	All Pupils	7	42	102.3	107	-4.7	-0.7	-1.4	0.7
Gender	Male	3	23	99.3	105.8	-6.5	2.1	-1.4	3.5
	Female	4	19	105.3	108.3	-3	-2.9	-1.5	-1.4
DFE Prior Attainment	Higher attainers	1	25	107	109.5	-2.5	-0.9	-1.4	0.5
	Middle attainers	4	13	103.3	103.2	0.1	1.2	-0.2	1.4
	Lower attainers	2	1	94	-	-	-4.5	-18.3	13.8
SEN Group	SEN Support	3	6	99.3	101.2	-1.9	2.1	-4.1	6.2
	EHC Plan	1	-	-	-	-	-13.2	-	-
	No SEN	3	36	105.3	107.8	-2.5	0.6	-1	1.6
Ethnic Group	White	6	33	102.3	107.2	-4.9	1.3	-1.3	2.6
	Not White	1	9	-	106.2	-	-13.2	-2	-11.2

Scatterplot

KS2 Pupil scatterplot 2019 52 pupils highlighted by Pupil Premium



Context

Context · Year 6

		Pupils	Comparative profile 2018 / 2019		Absence during Key Stage 2		Persistent absence during Key Stage 2	
		School	School	National	School	National	School	National
Summary	All Pupils	51	100%	100%	-	-	-	-
Gender	Male	27	53%	51%	-	-	-	-
	Female	24	47%	49%	-	-	-	-
DFE Prior Attainment	Higher attainers	26	51%	32%	-	-	-	-
	Middle attainers	17	33%	54%	-	-	-	-
	Lower attainers	3	6%	8%	-	-	-	-
Pupil Premium	FSM (in last 6 years)	7	14%	30%	-	-	-	-
	Not FSM (in last 6 years)	44	86%	70%	-	-	-	-
FSM	FSM	2	4%	16%	-	-	-	-
	Not FSM	49	96%	84%	-	-	-	-
FSM Ever	FSM (ever)	7	14%	30%	-	-	-	-
	Not FSM (ever)	44	86%	70%	-	-	-	-
Term of Birth	Autumn Term	16	31%	33%	-	-	-	-
	Spring Term	20	39%	33%	-	-	-	-
	Summer Term	15	29%	34%	-	-	-	-
SEN Group	SEN Support	9	18%	15%	-	-	-	-
	EHC Plan	1	2%	3%	-	-	-	-
	No SEN	41	80%	82%	-	-	-	-
EAL	First language not English	15	29%	21%	-	-	-	-
	First language English	35	69%	79%	-	-	-	-
Mobility	Joined in Y5 or Y6	5	10%	7%	-	-	-	-
	Joined before Y5	46	90%	93%	-	-	-	-
Ethnicity	White	39	76%	74%	-	-	-	-
	Black Caribbean	2	4%	3%	-	-	-	-
	Black African	1	2%	6%	-	-	-	-
	Indian	4	8%	3%	-	-	-	-
	Pakistani	2	4%	4%	-	-	-	-
	Any Other	3	6%	4%	-	-	-	-