

# 2019 KS1 School Dashboard

for governors & school leaders

Produce custom dashboards  
at [fftaspire.org](http://fftaspire.org)

## The Croft Primary School

LA Swindon DFE 8662006 Produced October 2019 Version 1

### What it is

Seven easy-to-use reports that help governors and school leaders to evaluate school performance using the latest 2019 DFE school performance indicators.

### What it tells you

- What are the strengths and areas for improvement in your school?
- How does attainment and pupil progress compare to the national average over the last three years?
- How are you performing in different subjects?
- Do you have any under-performing groups of pupils?
- How might the context of your school affect performance?
- How does pupil attendance compare to the national average?

### About the data shown

1 2 3

#### Actual results

Actual results for your school, using a range of measures such as averages and thresholds.



#### Gauges

These display headline indicators and whether actual results and pupils' progress are in line with, or significantly above or below, the national average.

ESTIMATED



1 2 3

#### Pupil progress

The value added progress that your pupils have made from one key stage to the next. FFT compares your actual results to the estimated results based on the progress of similar pupils nationally.



#### Statistical significance

Green plus signs and red minus signs highlight where either actual results or pupils' progress is significantly above or below the national average.



#### Trends

The dashboard analyses school performance over 3-5 years. Any significant year-on-year improvement is highlighted using an up arrow. Significant declines in performance are highlighted with a down arrow.



#### Strengths & weaknesses

These highlight key pupil groups and subjects where progress is above or below the national average.

### Working in partnership with



### Data sources

Generated from FFT Aspire which includes data sourced from the DfE (National Pupil Database) and data calculated by FFT. FFT is accredited as a DfE supplier to receive early access to ASP data. Headline performance indicators will be consistent with the DfE School Performance Tables and ASP.

# Overview

## KS1 Attainment 2019 · Actual results

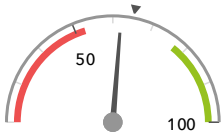
60 pupils

% Expected Standard + (Re, Wr, Ma)

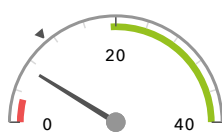
% Higher Standard (Re, Wr, Ma)

62%

7%



In line with the national average (65%) ◀



In line with the national average (11%) ◀

## KS1 Progress 2019 · Value Added

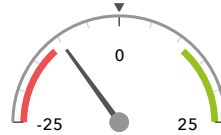
60 matched pupils

% Expected Standard + (Re, Wr, Ma)

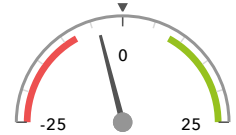
% Higher Standard (Re, Wr, Ma)

-10%

-4%



In line with the national average (0%) ◀



In line with the national average (0%) ◀

## KS1 higher and lower performing pupil groups 2019

	Higher performing	Lower performing
<b>Overall achievement</b> pupil progress	First language not English (15)	SEN Support (5) Autumn Term (22) ⬇️ Male (29) ⬇️
<b>KS1 reading achievement</b> pupil progress		Autumn Term (22) Male (29) SEN Support (5)
<b>KS1 writing achievement</b> pupil progress	First language not English (15)	SEN Support (5) Autumn Term (22) Middle attainers (28)
<b>KS1 mathematics achievement</b> pupil progress	First language not English (15)	Autumn Term (22) Male (29) Middle attainers (28)

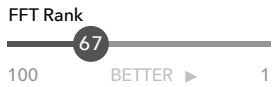
# Attainment & progress

## KS1 Attainment 2019

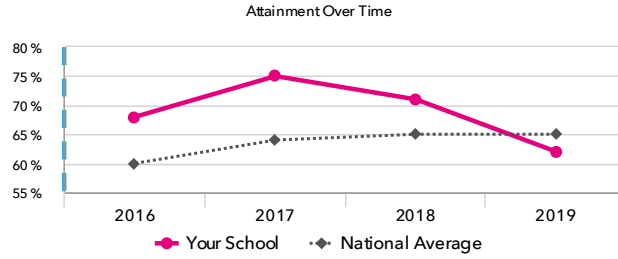
60 pupils

% Expected Standard + (Re, Wr, Ma)

**62%**



In line with the national average (65%)



## KS1 Progress 2019

60 matched pupils

% Expected Standard + (Re, Wr, Ma)

**-10%**



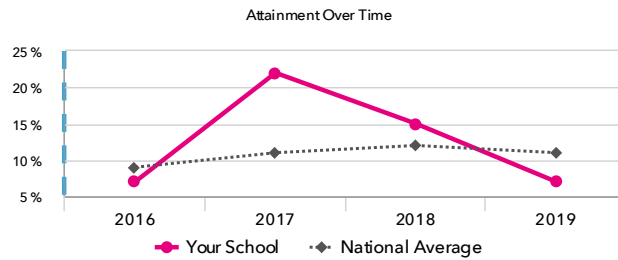
In line with the national average (0%)

% Higher Standard (Re, Wr, Ma)

**-4%**



In line with the national average (0%)



% Higher Standard (Re, Wr, Ma)

**7%**



In line with the national average (11%)

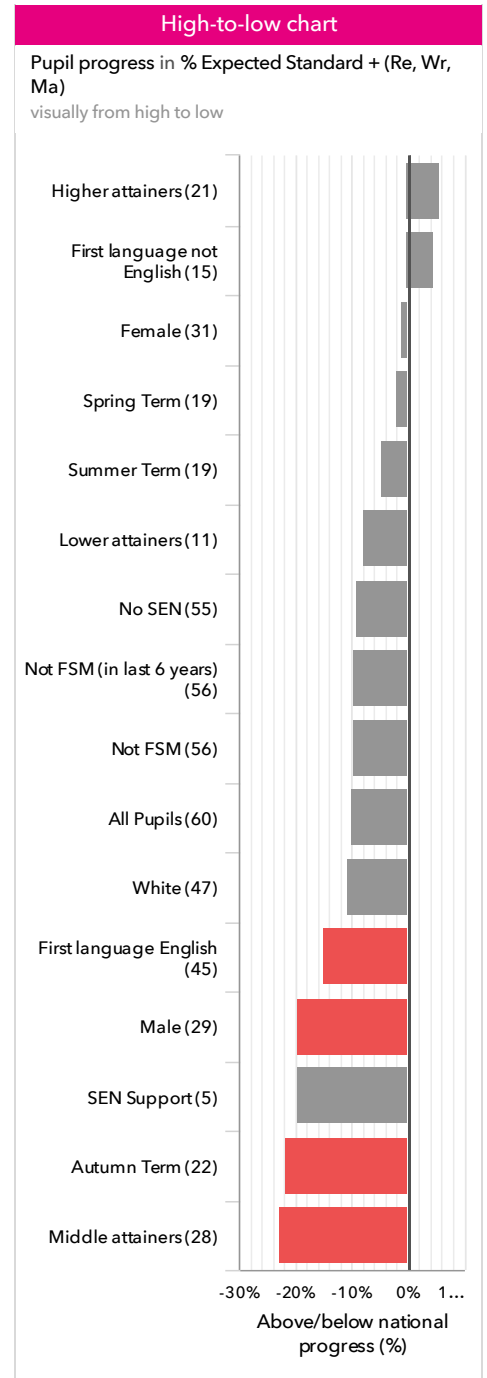
## KS1 performance summary

	Actual results			Pupil progress		
	2017	2018	2019	2017	2018	2019
Number of Pupils / % Matched	59	59	60	97%	98%	100%
% Expected Standard + (Re, Wr, Ma)	75%	71%	62%	-3%	-6%	-10%
% Higher Standard (Re, Wr, Ma)	22% <span style="color: green;">+</span> <span style="color: green;">↑</span>	15%	7%	+7%	+1%	-4%
% Expected Standard + Reading	85%	81%	72%	-3%	-6%	-9%
% Higher Standard Reading	32% <span style="color: green;">↑</span>	36%	13% <span style="color: red;">-</span> <span style="color: red;">↓</span>	-0% <span style="color: green;">↑</span>	+6%	-13% <span style="color: red;">-</span> <span style="color: red;">↓</span>
% Expected Standard + Writing	78%	71%	62%	-3%	-11% <span style="color: red;">-</span>	-14% <span style="color: red;">-</span>
% Higher Standard Writing	25% <span style="color: green;">+</span>	20%	8%	+4%	+2%	-7%
% Expected Standard + Maths	92% <span style="color: green;">+</span>	83%	73%	+5%	-5%	-8%
% Higher Standard Maths	31% <span style="color: green;">↑</span>	24%	13%	+5% <span style="color: green;">↑</span>	-5%	-8%

# Pupil groups

## KS1 Pupil groups performance 2019

	Pupils	Actual results		Pupil progress		
		% Expected Standard + (Re, Wr, Ma)	% Higher Standard (Re, Wr, Ma)	% Expected Standard + (Re, Wr, Ma)	% Higher Standard (Re, Wr, Ma)	
<b>Summary</b>	All Pupils	60	62%	7%	-10%	-4%
<b>Gender</b>	Male	29	48%	3%	-19%	-4%
	Female	31	74%	10%	-1%	-4%
<b>Prior Attainment</b>	Higher attainers	21	95%	19%	+6%	-4%
	Middle attainers	28	57%	0%	-23%	-6%
	Lower attainers	11	9%	0%	-8%	-0%
<b>Pupil Premium</b>	FSM (in last 6 years)	4	50%	0%	-15%	-5%
	Not FSM (in last 6 years)	56	63%	7%	-10%	-4%
<b>FSM</b>	FSM	4	50%	0%	-15%	-5%
	Not FSM	56	63%	7%	-10%	-4%
<b>Term of Birth</b>	Summer Term	19	53%	5%	-5%	-1%
	Spring Term	19	79%	11%	-2%	-2%
	Autumn Term	22	55%	5%	-22%	-9%
<b>SEN Group</b>	SEN Support	5	20%	0%	-20%	-3%
	No SEN	55	65%	7%	-9%	-4%
<b>EAL</b>	First language not English	15	67%	13%	+5%	-1%
	First language English	45	60%	4%	-15%	-5%
<b>Ethnicity</b>	White	47	62%	6%	-11%	-4%
	Black Caribbean	1	100%	0%	+19%	-6%
	Black African	1	0%	0%	-30%	-0%
	Indian	4	100%	0%	+33%	-18%
	Pakistani	1	100%	0%	+19%	-6%
	Bangladeshi	1	0%	0%	-17%	-0%
	Other Asian	1	100%	0%	+19%	-6%
	Chinese	2	50%	50%	-39%	+16%
	Any Other	2	0%	0%	-79%	-5%



# Subjects

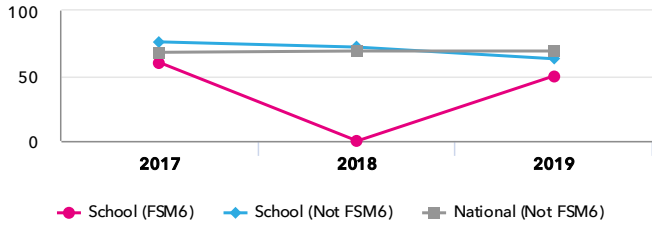
## KS1 subject performance 2019

	Actual results			Pupil progress			Actual results over time		
	2017	2018	2019	2017	2018	2019			
Number of Pupils / % Matched	59	59	60	97%	98%	100%			
<b>Reading</b>									
% Expected Standard +	85%	81%	72%	-3%	-6%	-9%			
% Higher Standard	32% ↑	36%	13% ↓	-0% ↑	+6%	-13% ↓			
<b>Writing</b>									
% Expected Standard +	78%	71%	62%	-3%	-11%	-14%			
% Higher Standard	25% +	20%	8%	+4%	+2%	-7%			
<b>Maths</b>									
% Expected Standard +	92% +	83%	73%	+5%	-5%	-8%			
% Higher Standard	31% ↑	24%	13%	+5% ↑	-5%	-8%			
<b>Science</b>									
% Expected Standard +	100% +	93% +	98% +	-	-	-			

# Disadvantaged pupils

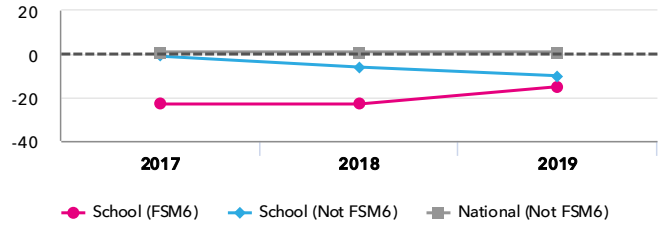
## KS1 attainment for disadvantaged pupils 2019

% Expected Standard + (Re, Wr, Ma)



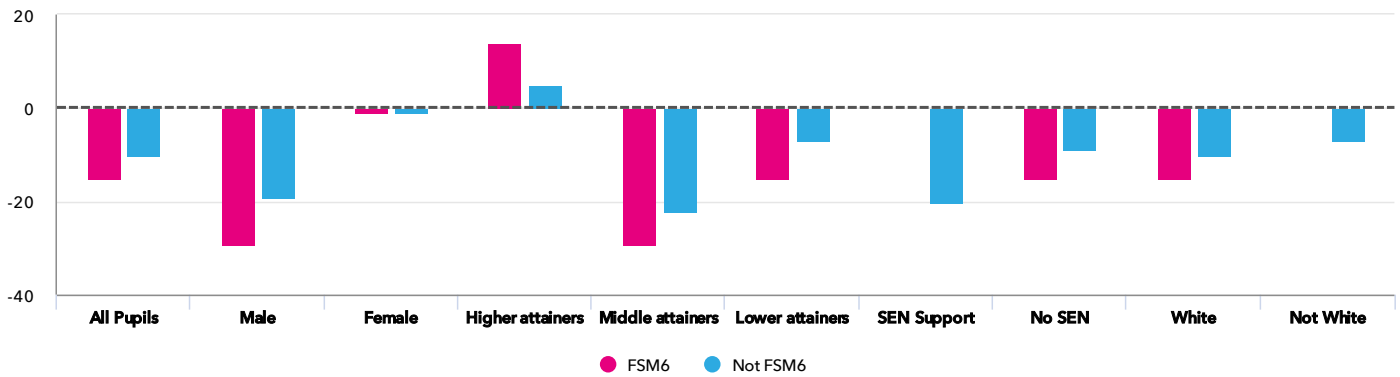
## KS1 progress for disadvantaged pupils 2019

% Expected Standard + (Re, Wr, Ma)



## Progress gap

% Expected Standard + (Re, Wr, Ma)

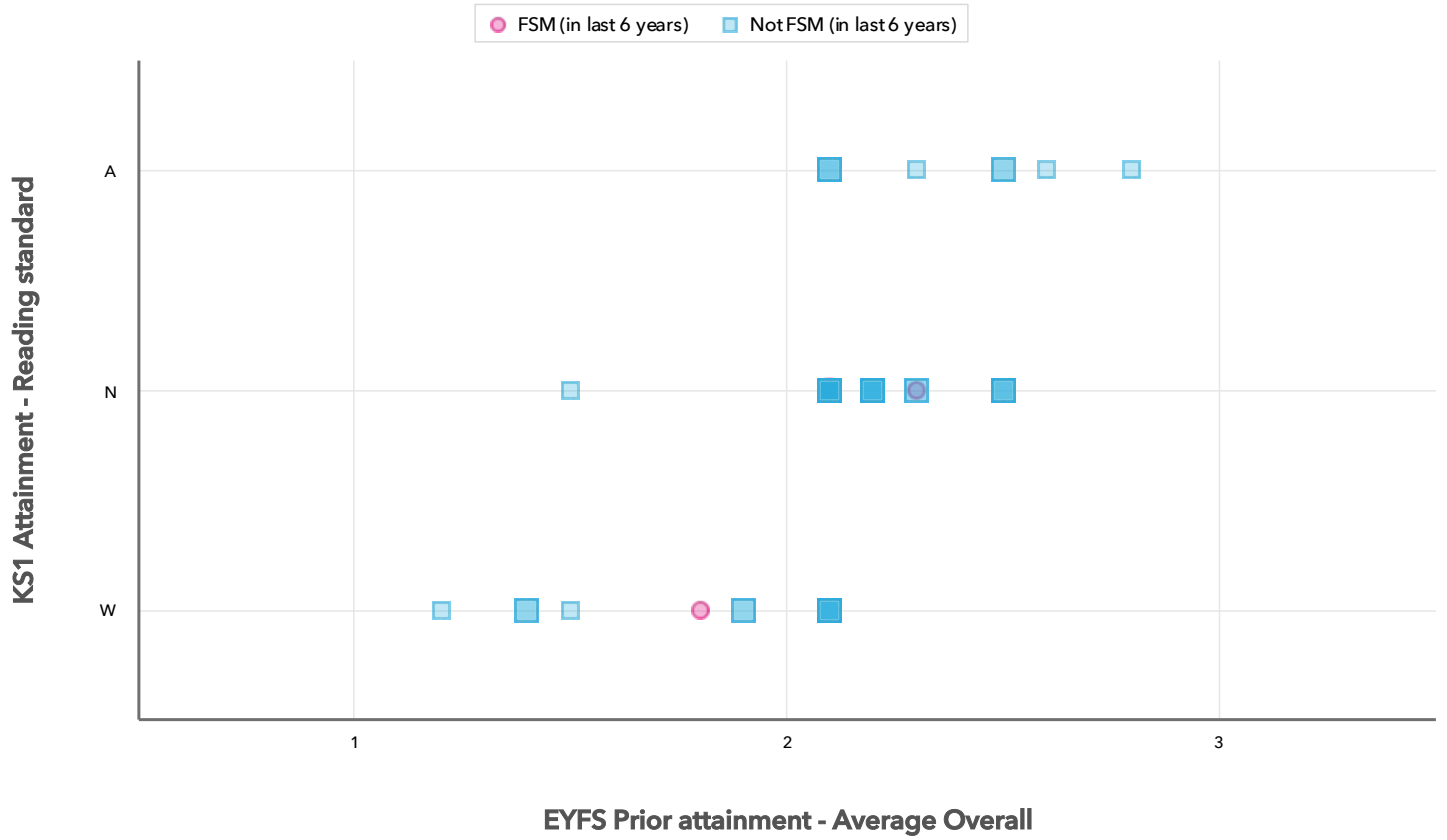


## Attainment & progress

Pupils	Attainment			Progress					
	FSM6	Not FSM6	% Expected Standard + (Re, Wr, Ma)			FSM6	Not FSM6	Gap	
			FSM6	Not FSM6	Gap				
<b>Summary</b>	All Pupils	4	56	50%	63%	-13%	-15%	-10%	-5%
<b>Gender</b>	Male	2	27	50%	48%	2%	-29%	-19%	-10%
	Female	2	29	50%	76%	-26%	-1%	-1%	0%
<b>Prior Attainment</b>	Higher attainers	1	20	100%	95%	5%	14%	5%	9%
	Middle attainers	2	26	50%	58%	-8%	-29%	-22%	-7%
	Lower attainers	1	10	0%	10%	-10%	-15%	-7%	-8%
<b>SEN Group</b>	SEN Support	-	5	-	20%	-	-	-20%	-
	No SEN	4	51	50%	67%	-17%	-15%	-9%	-6%
<b>Ethnic Group</b>	White	4	43	50%	63%	-13%	-15%	-10%	-5%
	Not White	-	13	-	62%	-	-	-7%	-

# Scatterplot

KS1 Pupil scatterplot 2019 60 pupils highlighted by Pupil Premium



## Context

## Context - Year 2

		Pupils	Comparative profile 2018 / 2019		Absence during Key Stage 1		Persistent absence during Key Stage 1	
		School	School	National	School	National	School	National
<b>Summary</b>	All Pupils	60	100%	100%	-	-	-	-
<b>Gender</b>	Male	29	48%	51%	-	-	-	-
	Female	31	52%	49%	-	-	-	-
<b>Prior Attainment</b>	Higher attainers	21	35%	35%	-	-	-	-
	Middle attainers	28	47%	34%	-	-	-	-
	Lower attainers	11	18%	28%	-	-	-	-
<b>Pupil Premium</b>	FSM (in last 6 years)	4	7%	21%	-	-	-	-
	Not FSM (in last 6 years)	56	93%	79%	-	-	-	-
<b>FSM</b>	FSM	4	7%	16%	-	-	-	-
	Not FSM	56	93%	84%	-	-	-	-
<b>Term of Birth</b>	Summer Term	19	32%	34%	-	-	-	-
	Spring Term	19	32%	33%	-	-	-	-
	Autumn Term	22	37%	34%	-	-	-	-
<b>SEN Group</b>	SEN Support	5	8%	13%	-	-	-	-
	No SEN	55	92%	85%	-	-	-	-
<b>EAL</b>	First language not English	15	25%	21%	-	-	-	-
	First language English	45	75%	79%	-	-	-	-
<b>Ethnicity</b>	White	47	78%	74%	-	-	-	-
	Black Caribbean	1	2%	3%	-	-	-	-
	Black African	1	2%	5%	-	-	-	-
	Indian	4	7%	3%	-	-	-	-
	Pakistani	1	2%	4%	-	-	-	-
	Bangladeshi	1	2%	2%	-	-	-	-
	Other Asian	1	2%	3%	-	-	-	-
	Chinese	2	3%	1%	-	-	-	-
	Any Other	2	3%	4%	-	-	-	-