



The English Martyrs
Catholic School and
Sixth Form College

'Per Unitatem Virtus'



www.ems.bhcet.org.uk

Year 9 Options Brochure

Welcome

Dear Parent/ Carer,

In their first few years at English Martyrs, students have had the opportunity to study a broad curriculum, developing a range of skills and knowledge as well as discovering their talents and interests. It is now time for students to begin the process of specialising to subjects that will support them in their pursuit of those interests and a path that will lead them to the best possibility of the career of their choice.

We have a comprehensive programme that will support you and your young person in making their option choices, so that they are able to choose subjects that they enjoy and can be successful in.

To ensure all students continue to experience a rich and balanced curriculum that secures a strong academic foundation, there are Core subjects which will be studied by all students at Key Stage 4: Religious Education, English, Mathematics, Science and a humanities subject (Geography or History). Students will also continue with some Physical Education, and they will continue to benefit from engaging with our Personal Development curriculum. Students will then have some flexibility from a range of academic, vocational and practical subjects. Students will be encouraged to consider which subjects they love and are flourishing in, as well what they want to do in the future.

During the Options Evening, there will be presentations about the process, representatives from departments to give you more information about the courses available to students and careers advice will also be available.

Parents and Carers play an essential role in supporting our young people and we appreciate that there is a lot to consider. At no stage will you or your young person be alone in this process. Staff will be available to help you before, during and after the evening.

If you need to discuss your child's options after this evening, please email the school on:

ems-options@ems.bhcet.org.uk

We look forward to taking the next steps side by side with you and your young people.

Yours in faith,

Mr C Corcoran
Deputy Headteacher

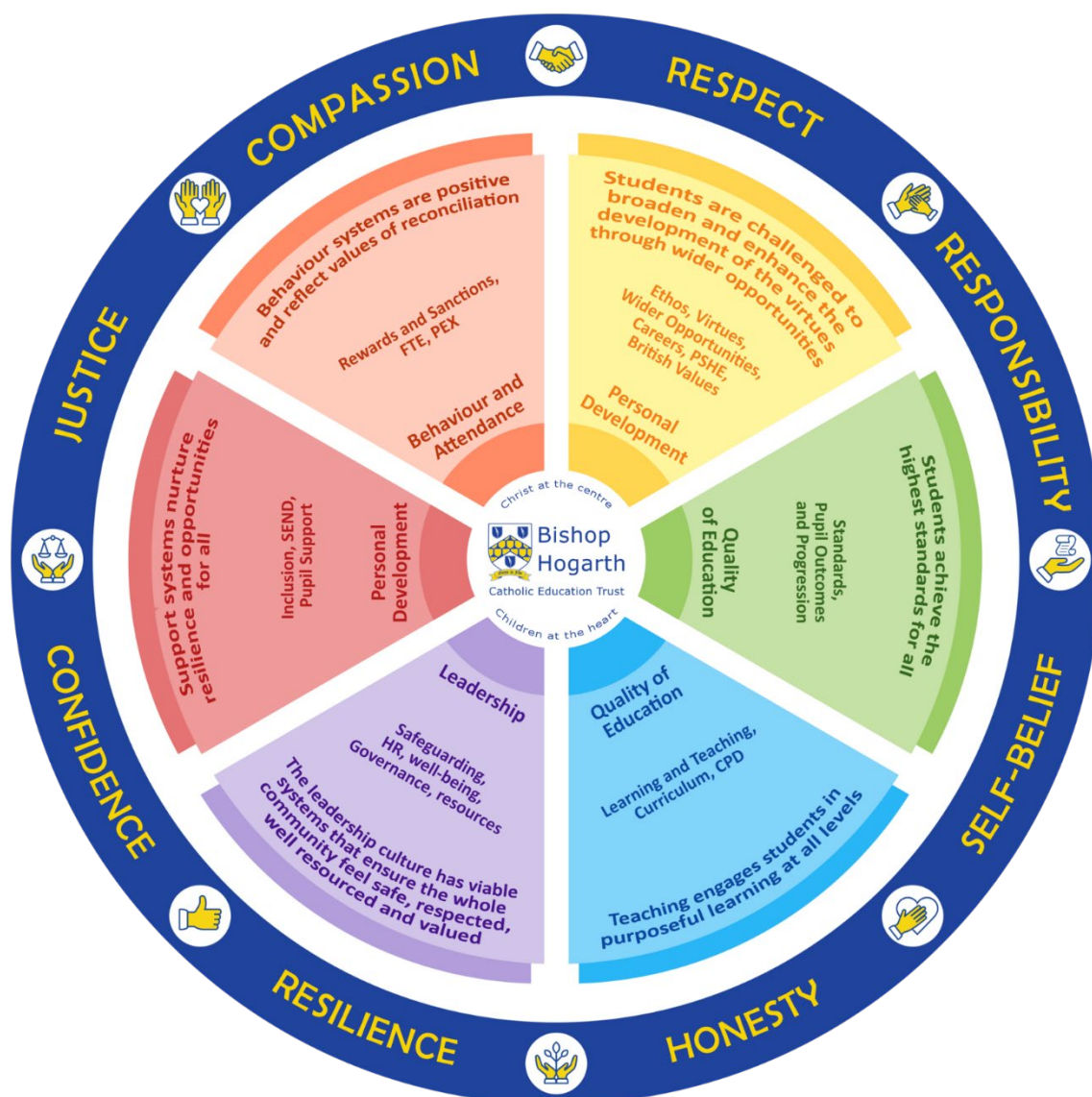
Mr I Walker
Assistant Headteacher

Mission Statement

"Christ has no body now on earth but yours."

- St Teresa of Avila

At English Martyrs, we want all of our staff and students to embody the compassion, kindness and understanding that Christ demonstrated to those he encountered. Through all that we do, we ask the Lord our God to guide us to act with integrity and to help us to serve others selflessly.



Advice on choosing your options

Options - Your next steps:

- Choosing your Options is an exciting time for you to shape your educational career.
- By studying a wide range of subjects, you will learn new skills, gain new knowledge and understanding which will shape you as a person and support you in leading a full and happy life.
- You invest in your future and begin the journey of personalising your school career.

With such an important decision it is crucial that you:

- Take your time and carefully consider your choices.
- Talk to teachers, Pastoral Leaders, parents and careers advisers.
- Recognise that school offers a broad curriculum to give you a rich education that does not limit your future choices.
- If you know what you want to do at university or as a career, ensure you choose the subjects you need.
- Access careers guidance websites: <https://www.careersbox.co.uk>, <http://icould.com> and <https://www.unifrog.org>. In addition, you can also book an appointment with Mrs Mincher, Head of Careers, or one of the careers team.

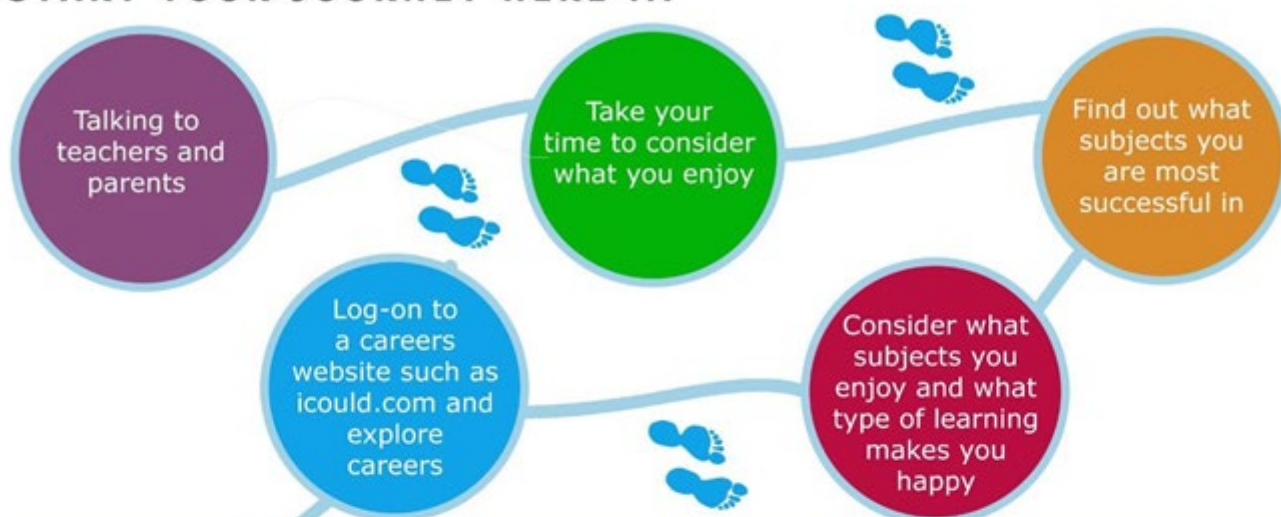
How to choose your options:

- Consider all the subjects you are good at and the ones you like. This is not always as easy as it seems. Subjects will become increasingly more difficult, and you need to be confident that you can achieve your potential.
- It is good to have a balanced timetable with opportunities for academic and practical work.
- Don't choose subjects because your friends are doing them, or because you have a favourite teacher. There is no guarantee who will teach you or who your classmates will be.
- Don't choose or disregard a subject without full consideration; that subject may be important for your future and could be a necessary qualification for a college course, university place or employment.

Steps to Success

The aim is to choose subjects that you will enjoy, be successful at and will give you a rewarding career.

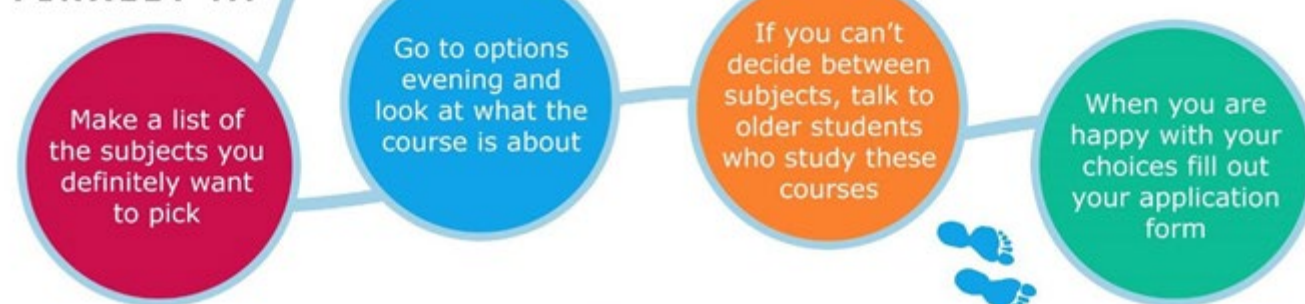
START YOUR JOURNEY HERE ...



THEN ...



FINALLY ...



Submit the online option form and feel confident that you have made the right choice for you.

What Next?



The English Martyrs SIXTH FORM COLLEGE

We strive that all students from English Martyrs Catholic School and Sixth Form College follow their ambitions and experience success. We have an excellent tradition of students continuing in education and employment with the majority going to universities and securing ambitious careers.

The entry qualifications for most Level 3 courses are a minimum of 5 passes at GCSE at grade 4 or above including English and maths. However, all students are challenged to achieve their best and aim higher than the minimum entry grades.

Students in Year 11 are encouraged to consider a range of post 16 provision. Our Sixth Form is a natural next step into Year 12 and 13 for many of our students and can fully support students as they learn from Year 7 to Year 13.

Our Sixth Form offers a broad range of A-Levels, Applied A-Levels and BTECs. The Sixth Form currently has over 30 courses at post-16. Prospective sixth form students are supported through their option choices to ensure they have high quality careers advice and guidance.

We have:

- Dedicated and specialist Key Stage 5 staff teachers
- Excellent modern facilities
- New clubs, societies and sporting opportunities
- Dedicated Sixth Form Leadership and Form staff
- Excellent and dedicated Sixth Form Careers advice
- Bursaries and financial support

There is a wide range of extra-curricular courses/activities available in the Sixth Form at English Martyrs including:

- Young Enterprise Scheme /Faith in Action work
- Celebrations, including Christmas parties and Summer balls
- Opportunities for trips and pilgrimages - at home and abroad
- Challenging and enlightening retreats
- Duke of Edinburgh Scheme
- Student Leadership opportunities
- Opportunities to have fun and further develop social skills



English Martyrs Sixth Form is an excellent place to study, and students go on to study at universities across the country, including Cambridge, Oxford, Durham, York, Warwick, Bristol, University College London and Newcastle. They also secure competitive apprenticeships in prestigious organisations and businesses such as Cleveland Fire brigade Service, Northeast ambulance services and Caterpillar.

If you would like more information on any aspect of our Sixth Form, then please contact Mrs Henderson, Director of Sixth Form 01429 273790

English Language

**AQA English
Language
Syllabus Code
8700 QAN
601/4292/3**



Why study English Language?

English forms the fundamental building blocks of a solid education. It allows us to learn about different cultures, experiences, and ideas, widening our knowledge of life. English firmly underpins all other aspects of the curriculum and encourages creative thinking, allowing students to express their understanding in a variety of ways.

Course outline

The course is designed to develop curious and confident speakers and writers with an in-depth understanding and love of language and literature. Students will read a wide range of both fiction and non-fiction texts. Students will have a clear understanding of how writers use different linguistic, structural, and generic conventions to create meaning and will be able to communicate clearly, accurately and with confidence, adapting language and style for a wide variety of different audiences, purposes, and genres.

How will I be assessed and examined?

All students are assessed through external examinations. There are no tiers of entry; all students sit the same papers. All examinations are linear, with papers set at the end of Year 11.

Examinations are as follows:

Awarding Body: AQA *Specification Code:* English Language (8700)

Paper 1 – Explorations in Creative Reading and Writing (50% of GCSE)

Section A: Reading - One fiction text **Section B: Writing** – Descriptive or narrative writing (80 marks)

Paper 2 – Writers' Viewpoints and Perspectives (50% of GCSE)

Section A: Reading – Two non-fiction texts **Section B: Writing** – Writing to present a viewpoint (80 marks)

Compulsory Non-examination Assessment: Spoken Language

Candidates present, respond to questions and feedback whilst demonstrating the use of Standard English. This unit is assessed by the class teacher throughout the course.

What are the career opportunities and progression routes?

Many students choose to go on and study English courses after GCSE, whether at A level or university. At English Martyrs, we offer both A Level English Language and A Level English Literature in Sixth Form. Equally, a good grade in English at GCSE is a requirement of many post-16 pathways.

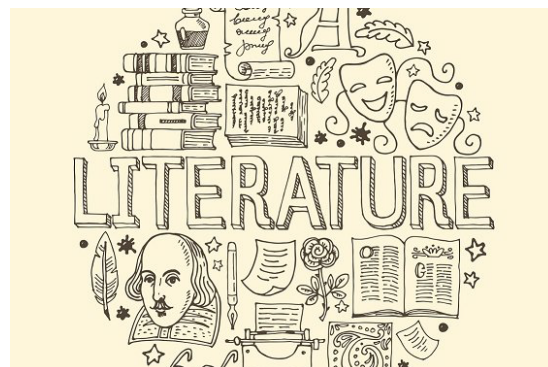
English is an excellent subject to study at university as it provides a solid qualification for entry into careers, such as journalism, the Media, Law, clerical and administration work, publishing, politics, and teaching. It is also valued in medical applications.

English Literature

**GCSE AQA English
Literature Syllabus
Code 8702
QAN 601/4447/6**

Why study English Literature?

English forms the fundamental building blocks of a solid education. It allows us to learn about different cultures, experiences, and ideas, so widening our knowledge of life. English firmly underpins all other aspects of the curriculum and encourages creative thinking, allowing students to express their understanding in a variety of ways.



Course Outline

During the course, you will study the following texts:

- One modern play: *An Inspector Calls*
- One Shakespearean play: *Macbeth*
- One Nineteenth Century Novel: *A Christmas Carol*
- A selection of 15 poems from the AQA Poetry Anthology: *Power & Conflict*

How will I be assessed and examined?

All students are assessed through external examinations. There are no tiers of entry; all students sit the same papers. All examinations are linear, with papers sat at the end of Year 11.

Examinations are as follows:

Awarding Body: AQA Specification Code: English Literature (8702)

Paper 1 – Shakespeare and the 19th-century novel (40% of GCSE)

Paper 2 – Modern texts and poetry (60% of GCSE)

These will be closed book examinations. (This means that you will not be allowed to take any notes or copies of the texts that you have studied into the exam.) Throughout the course there will be various opportunities in class to practise exam style questions and develop the skills needed to succeed in your final exams.

What are the career opportunities and progression routes?

Many students choose to go on and study English courses after GCSE, whether at A level or university. At English Martyrs, we offer both A Level English Language and A Level English Literature in Sixth Form. Equally, a good grade in English at GCSE is a requirement of many post-16 pathways: college, sixth form, apprenticeships, for example.

English is an excellent subject to study at university as it provides a solid qualification for entry into careers, such as journalism, the Media, Law, clerical and administration work, publishing, politics, and teaching, to name but a few. It is also valued in medical applications.

Mathematics

EDEXCEL Mathematics
Syllabus Code 1MA1
QAN 601/4700/3

Why study Mathematics?

Most universities and employers will want you to have a pass at GCSE and future career prospects will be limited without it. Having an understanding of mathematics underpins many areas of our lives and studying mathematics also develops transferable skills such as problem solving and reasoning.

Course outline

The aims and objectives of GCSE Mathematics are to enable students to:

- Develop fluent knowledge, skills and understanding of mathematical methods and concepts
- Acquire, select and apply mathematical techniques to solve problems
- Reason mathematically, make deductions and inferences and draw conclusions
- Comprehend, interpret and communicate mathematical information in a variety of forms appropriate to the information and context

Mathematics GCSE will assess content covered in Number, Algebra, Ration, Proportion and Rates of change, Geometry and Measures and Probability and Statistics.

How will I be assessed and examined?

Each student will be entered for one of the following tiers: Foundation or Higher. Students will take three examination papers within each tier.

Tier	Grade Range	Assessment Component	Time
Edexcel Foundation Each paper has 80 marks	1 -5	Paper 1 non - calculator Paper 2 calculator Paper 3 calculator	1 hour 30 minutes 1 hour 30 minutes 1 hour 30 minutes
Edexcel Higher Each paper has 80 marks	4-9	Paper 1 non-calculator Paper 2 calculator Paper 3 calculator	1 hour 30 minutes 1 hour 30 minutes 1 hour 30 minutes

Certificate of Achievement

If it is felt that students are unlikely to gain a grade 1 at GCSE, they can take the Certificate of Achievement.

AQA Level 2 Further Maths

The AQA Level 2 Certificate in Further Mathematics is one tiered Level 2 linear qualification for learners who:

- Either already have, or are expected to achieve, grades 7, 8 and 9 in GCSE Mathematics.
- Are likely to progress to A-Level study in Mathematics and possibly Further Mathematics.
- Paper 1 is a non-calculator assessment, and a calculator is allowed for Paper2.
- Each paper is 1 hour 45 minutes long.
- Each paper has 80 marks.

What are the career opportunities and progression routes?

A grade 4 or 5 at GCSE in Mathematics is an important qualification to enable students to progress both in education and in work. Higher grades (6, 7, 8 or 9) would enable students to progress to A level and beyond. Mathematics is a key subject in terms of developing skills for life. Some possible careers include: actuary, chartered accountant, data analyst, data scientist, investment analyst, investment banker and research scientist.

Religious Studies

Religious Studies
C120PB WJEC
EDUQAS GCSE
601/88790/0

Why study RE?

RE helps you to:

- Respect others and gain a broader understanding of views and beliefs
- Improve your knowledge of global affairs
- Develop a stronger sense of wellbeing, ethical standards and personal happiness
- Understand the importance of tolerance in our society
- Contribute to and build a more cohesive community
- Understand the influence of religion on individuals, communities and societies.



RE is known as 'the core of the curriculum' because it helps people to understand themselves and the part they play in life.

Course outline

GCSE Religious Studies includes three components. Within these areas students will be expected to demonstrate knowledge and understanding of two religions and of key sources of wisdom and authority, to construct well-informed and formulate balanced arguments on matters concerned with religious beliefs and values.

In Applied Catholic Theology we look at ethical and philosophical issues that society faces today. How should we punish criminals? What happens to us after we die? Did Jesus really come to save us and what role does the Church play in the world today?

In Foundational Catholic Theology we look at some of life's bigger questions. Where does the world come from? Are humans special? How can art teach us about life? Why does suffering and evil exist in our world if we were supposed to be made perfectly?

In Judaism you will learn about different religious beliefs you may not have encountered before. How is Judaism different from other religions? Why are 13-year olds considered adults? Why can Jews not mix meat and dairy? What are the different festivals Jews celebrate?

How will I be assessed and examined?

There are three examinations for each of the components. Students take all exams at the end of Year 11:

- Applied Catholic Theology – Sin and forgiveness, Life and death
- Foundational Catholic Theology – Origins and meaning, Good and evil
- Judaism – Beliefs and teachings, Practices

What are the career opportunities and progression routes?

Religious Education encourages skills of listening, understanding, communicating and the ability to form and express personal opinions with analysis and synthesis. It gives insight into how we all link to each other, why it's important to respect and love each other and how we can gain a greater understanding of faith in the world we live in, contributing to the common good of society.

A qualification in RE is highly valued in areas such as:

- Medicine and nursing
- Teaching and social work
- Journalism and publishing
- Public services and banking
- Religious vocations
- Law

Science

AQA “Trilogy” Combined Science / GCSE Biology, GCSE Chemistry, GCSE Physics Specification: Trilogy (Combined Science) 8642, Biology 8461, Chemistry 8642, Physics 8463

Why study Science?

Students who do not choose science as one of their options will follow the Combined Science course, leading to the award of **two** GCSE grades. This course is still appropriate for students who wish to study Sciences at A-level.

Students who wish to study Biology, Chemistry and Physics as separate subjects and gain **three** Science GCSEs have the opportunity to do so. In order to do this, Triple Science **must** be selected as one of your options. Choosing the separate sciences gives students a much greater breadth of study in science. This is recommended for any student with an interest in pursuing Science at post-16 level, but it is not a specific requirement.



Due to the demanding nature of the courses, students wishing to take triple science must achieve a high standard of achievement at the end of year 9.

Course outline

Italics indicate the extra areas within each topic that are studied only by those students who take Triple Science as an option.

Biology

- Cell biology (*culturing microorganisms*)
- Principles of organisation
- Infection and response (*monoclonal antibodies; plant diseases*)
- Bioenergetics
- Homeostasis and response (*the eye; the brain; thermoregulation; plant hormones; osmoregulation*)
- Inheritance, variation and evolution (*types of reproduction; DNA structure; cloning; Darwinian evolution; Mendelian genetics*)
- Ecology (*decomposition; impact of environmental change; trophic levels; food production*)

Chemistry

- Atomic structure & the periodic table (*properties of transition metals*)
- Bonding, structure, and the properties of matter (*size and properties; nanoparticles*)
- Quantitative chemistry (*yield and atom economy; molar solutions; moles of gases*)
- Chemical changes (*titrations*)
- Energy changes (*chemical cells and fuel cells*)
- The rate and extent of chemical change
- Organic chemistry (*alkenes and alcohols; polymers*)
- Chemical analysis (*ion testing*)
- Chemistry of the atmosphere
- Using resources (*using materials; the Haber process*)

Physics

- Energy
- Electricity (*static electricity*)
- Particle model of matter (*pressure in gases*)
- Atomic structure (*radiation hazards; nuclear fission and fusion*)
- Forces (*moments, levers & gears; pressure in fluids*)
- Waves (*sound waves; waves for detection and exploration; lenses; light; black body radiation*)
- Magnetism and electromagnetism (*loudspeakers; induced potential; transformers; the National Grid*)
- Space physics

How will I be assessed and examined?

Assessment is all by external examinations at the end of Y11. The exams include multiple choice, short answer and extended response questions. All students will have two exams in each science subject i.e. six in total. For Combined Science the papers are each 1hr 15 minutes long, for Triple Science they are 1hr 45 minutes.

What are the career opportunities and progression routes?

The sciences are very useful general qualifications as they develop the skills of planning, evidence gathering, analysis and critical thinking. Because of this, as well as obvious careers and higher education courses such as medicine, engineering, pharmaceuticals, etc. the sciences are also regarded favourably for entry into other fields, such as law, economics and business.

Core PE

Key Stage 4

Building upon the basic skills taught in Key Stage 3, the PE programme in Key Stage 4 allows students to pursue a variety of activities. Choice is built into the programme which allows students to select some activities that they enjoy and hopefully encourages life-long participation in sport and physical activity. Core PE promotes positive mental health and wellbeing.

Individual Sports/Activities

Badminton, Table Tennis, Trampolining, Athletics, Fitness.

Team Sports/Activities

Football, Rugby, Handball, Netball, Volleyball, Basketball, Cricket, Rounders.



Students will also get the opportunity to use the fitness suite on a rotational basis. They will be encouraged to take on roles such as leadership and officiating with a view to develop transferable life skills.

Those who excel in Physical Education will be encouraged to pursue PE as one of their option choices in addition to Core PE.



Art and Design

**AQA GCSE Art & Design
Specification
Code 8201 QAN
601/8088/2**



Why study Art & Design?

Do you enjoy drawing, painting, photography, working in 3-D and experimenting with a variety of materials? Would you miss the unique opportunity that art provides to make a personal and imaginative response?

Course outline

GCSE Art and Design builds on the experience you have gained in Art and introduces you to a wider range of techniques and materials. You will learn a range of drawing and painting techniques, mono and lino printing, photography and Adobe Photoshop skills. You can also choose to learn textile techniques such as silk painting or 3D skills such as 3D digital design, 3D printing and ceramics. The course looks at a wide range of artists and designers.

You can choose from a range of themes and techniques to develop your controlled assessment and demonstrate your skill. Homework in GCSE Art and Design is planned to allow you to research and support the development of your ideas in class. The course is also supplemented by terrific trips giving students the opportunity to explore locations locally, nationally and internationally such as Newcastle, London, Barcelona and New York City.

How will I be assessed and examined?

Component 1: Portfolio

The portfolio is 60% of your GCSE grade. You will have an opportunity to learn and improve skills before completing a sustained project and an experimental unit. Your best work will be selected for assessment. A portfolio and externally set units are marked internally and validated by a visiting exam board moderator.

Component 2: Externally Set Assignment (Exam)

Seven externally set themes/questions are given to you from the exam board. You will have approximately 3 months preparation time in which to research your chosen theme and develop a final idea to produce over 10 hours in exam conditions. The exam is completed in the Art Department during manageable sessions over a few days. This accounts for 40% of your GCSE grade.

What are the career opportunities and progression routes?

After successfully completing the GCSE course, students can join an A Level course in Art and Design, Textiles, Photography, 3D Art and Employment and Graphic Design. This is usually followed by a foundation course of one year in a regional art college, or direct entry to a specialised degree, such as architecture, computer animation, interior and industrial design, fashion, photography and graphics.

Career Opportunities

Make an impact and shape your environment in the future by choosing one of the following careers: Graphic Designer, Packaging Designer, Photojournalist, Stylist, Advertising, Architect, Auctioneer, Fashion Designer, Video Editor, Film Director, Jewellery, Animator, Medical Illustrator, Children's Book Illustrator, Cartoonist, Interior Designer, Stage/Costume Designer, Fabric Designer.

GCSE Business

OCR GCSE (9-1) Business
Specification Code J204

Why study Business?

This subject introduces learners to the business world, empowering them to develop as commercially-minded and enterprising individuals. Students will have the opportunity to develop a wide range of skills, enabling them to use business information critically, to develop arguments, to make justified decisions and to prepare them for further study and career pathways. The focus of the subject is to introduce and nurture an enthusiasm for studying business in a range of contexts. Students will appreciate how businesses operate in a dynamic and competitive environment and develop an understanding of the interdependent nature of business functions from a local to a global perspective.



Course outline

The subject content enables learners to apply their knowledge and understanding to different business contexts, including businesses ranging from small enterprises to large multinationals and businesses operating in local, national and global contexts. Students are required to develop an understanding of how these contexts impact on business behaviour. Students will be expected to be familiar with current issues in business and develop an understanding of the dynamics of business activity. Students should investigate the real business world to develop an understanding of contemporary business opportunities and issues. The content is presented in seven clear and distinct topic areas:

- 1 - Business activity
- 2 - Marketing
- 3 - People
- 4 - Operations
- 5 - Finance
- 6 - External Influences on Business
- 7 - Interdependence

How will I be assessed and examined?

The subject content is assessed across two examination papers at the end of Year 11. Each exam is 90 minutes long. Paper 1 will test students on the units covered in Year 10 (Units 1-3). Paper 2 will test students on the units covered in Year 11 (Units 4-7). Some questions will be multiple choice, and some will be extended writing to test your ability to explain why you made a particular decision.

What are the career opportunities and progression routes?

A GCSE Business course develops your knowledge of the business world. It is appropriate for students wishing to pursue one of the areas covered by the units. It is a course that develops the skills of investigation, analysis, interpretation, communication and teamwork, as well as a knowledge of the world of work in general. It also gives a platform for moving into many careers, not always associated with business studies.

Possible Progression Routes

A Level Business, A Level Economics, Modern Apprenticeship, NVQs in the workplace, BTEC Business Studies.

CNAT Child Development

OCR Level 1 / 2

**CNAT (Cambridge National) in Enterprise & Marketing
J837**

Why study Enterprise & Marketing?

The Level 1/2 Certificate in Enterprise and Marketing will appeal to students who are interested in developing an understanding of how businesses function, grow and make a profit. The Cambridge Nationals programme will be suited to those who prefer units to be achieved gradually across the two years. It is a vocational based qualification, enabling students to demonstrate a number of different invaluable skills which reflect the needs of employers, further and higher education providers as well as professional organisations.



Course outline

This qualification has three mandatory units:

• Unit R067: Enterprise and Marketing Concepts

This is assessed by an exam. In this unit, you will learn about the key factors to consider and activities that need to happen to operate a successful small start-up business. Topics include: Characteristics, risk and reward for enterprise, Market research to target a specific customer, What makes a product financially viable, Creating a marketing mix to support a product, Factors to consider when starting up and running an enterprise.

• Unit R068: Design a Business Proposal

This is assessed by a set assignment. In this unit, you will identify a customer profile for a specific product, complete market research to generate product design ideas, and use financial calculations to propose a pricing strategy and determine the viability of the product proposal. Topics include: Market research, How to identify a customer profile, Develop a product proposal for a business brief, Review whether a business proposal is financially viable, Review the likely success of the business proposal.

• Unit R069: Market and Pitch a Business Proposal

This is assessed by a set assignment. In this unit, you will develop pitching skills to be able to pitch your business proposal to an external audience. Finally, you will review your pitching skills and business proposal using self-assessment and feedback gathered. Topics include: Develop a brand identity to target a specific customer profile, Create a promotional campaign for a brand and product, Plan and pitch a proposal, Review a brand proposal, promotional campaign and professional pitch.

How will I be assessed and examined?

You will be assessed over three units:

Unit R067: Enterprise and Marketing Concepts – This is an externally assessed set exam. It is worth **40%** of the final grade. This assessment will take place in Year 11.

Unit R068: Design a Business Proposal – This is an assessed assignment. It is worth **30%** of the final grade. You will study this unit in Year 10.

Unit R069: Market and Pitch a Business Proposal – This is an assessed assignment. It is worth **30%** of the final grade. You will study this unit in both Year 10 and 11.

At the end of the course students will be awarded a Pass, Merit, Distinction or Distinction grade (4, 5/6, 7/8 or 9 equivalents). This will be calculated from the credits achieved throughout the course.*

What are the career opportunities and progression routes?

From this course, students can naturally progress to study A Level Business, gain an apprenticeship e.g. Business Administration or explore technical qualifications such as Cambridge Technical or a T-Level.

CNAT Child Development

Level 1/2 Cambridge Nationals Certificate in Child Development Specification Code J818
QAN 601/7537/0

This course is designed for those interested in how a child develops from conception to the age of 5. It looks at the development of the child, equipment and nutritional needs of children, planning activities, play, postnatal, needs of children, childhood illnesses, safety, antenatal care, and conception.



All students will need access to a child aged 6 months to five years to plan and carry out play activities with as part of a coursework unit.

The course is assessed by a combination of coursework and a 1 hour 15-minute examination. The coursework provides 60% of the final mark, and the exam provides the other 40%.

Course outline

- R057 Health and wellbeing for child development: Students will learn about the importance of both pre-conception health and creating conditions in which a child can thrive, including the prevention and management of childhood illnesses and creating a safe environment. This is an examined unit and the examination will be undertaken in Year 11.
- R058 Creating a safe environment and understand the nutritional needs of children from birth to five years: Students will learn how to create a safe environment for children from birth to five years in childcare settings. They will investigate and choose equipment that is both suitable and safe for use and will learn about their nutrition and dietary needs. This is a coursework unit which will be completed in Year 10.
- R059 Understand the development of a child from one to five years: Students will learn the expected development norms for children from one to five years. They will use observation and research techniques and skills to investigate the development norms and explore their findings. They will also learn the importance of creating plans and providing different play activities to support children in their development. This is a coursework unit which will be completed in Year 10.

How is the course assessed?

Assessment includes an externally assessed unit R057; the remaining units are internally assessed, and OCR moderated based on a credit system. At the end of the course students will be awarded a Pass, Merit, Distinction or Distinction* grade (4, 5/6, 7/8 or 9 equivalents). This will be calculated from the credits achieved throughout the course.

What are the career opportunities and progression routes?

Students gaining this award will have access to a range of career and further education opportunities. They can continue to study the subject in the EMS Sixth Form as Health and Social Care, BTEC Level 3 National A level (single or double option).

These courses are aimed at students who are interested in professions in Early Years, Health Care, Social Work, Teaching, Nursery Working or Nursing. Some of the many possible careers include: Nursery Nurse, Playgroup worker, Child welfare, Primary and Nursery teaching, Nanny, Care Assistant, Social Worker, Health Visitor, Midwife & Therapists.

GCSE Computer Science

OCR GCSE Computer Science
Specification Code J277
QAN 601/8355/X

Why study Computer Science?

Computer Science has never been more important in our society than it is today and there is a huge shortfall in the number of people entering into careers in Computer Science compared to the massive number of opportunities available. This course will help you to develop a range of computational thinking skills that can be applied to any problem, encouraging you to decompose tasks into their component parts and go about solving each individually.



Computer Science is a discipline whereby the knowledge and skills acquired in the classroom are applied to real-world problems. It involves understanding and applying core concepts, analysing problems in computational terms, and devising solutions through the design, writing, testing, and evaluation of computer programs. This subject requires a strong foundation in mathematics and logical reasoning and emphasises systematic problem-solving and algorithmic thinking.

Critical thinking is a key component of this subject as is the ability to be resilient as there will be a range of challenges that will test and stretch you to your limits. If you love that kind of challenge, can persevere to see tasks through to their completion and want to stay ahead of the game with a qualification that is relevant to our ever-changing digital world putting you at the forefront of innovation then this course is for you.

Course Outline

Component 01: Computer Systems

Introduction to the central processing unit (CPU), computer memory and storage, data representation, wired and wireless networks, network topologies, system security and system software. You will also look at ethical, legal, cultural and environmental concerns associated with computer science.

Component 02: Computational Thinking, Algorithms and Programming

This unit allows you to apply knowledge and understanding gained in component 01 to develop skills and understanding in computational thinking including algorithms, programming techniques, producing robust programs, computational logic and translators.

Practical Programming

You will have the opportunity to undertake a programming task during the course which lets you develop your skills to design, write, test and refine programs using a high-level programming language.

How will I be assessed and examined?

Component 01 50% (External Exam) / **Component 02** 50% (External Exam)

What are the career opportunities and progression routes?

This course provides the ideal platform for progression by studying Computer Science at A Level or following a more vocational route with a Computing apprenticeship. There are hundreds of opportunities available in this field including machine learning, system analyst, technician, network admin, web author, UX designer, database admin, game designer, software developer, VFX artist, data security, artificial intelligence, robotics, engineer, data security, app development and cyber security to name a few but that list is ever growing with new roles being created each day.

CNAT Creative iMedia

OCR Cambridge National Creative iMedia
Specification Code J834
QAN 603/7090/7

Why study Creative iMedia?

A qualification in Creative iMedia will both inspire and equip you with the confidence to use skills that are relevant to the ever changing and constantly growing digital media sector. You'll learn to design, plan, create and evaluate digital media products to meet a given client brief and look at the wider issues surrounding the industry.



Creative iMedia is an extremely practical subject in which you'll gain experience of using industry standard software to produce a range of digital media products, developing digital identities for clients, planning and creating original graphics and other products. This course will encourage you to think about situations and what is needed to be successful, explore different options of solving a problem, generate ideas and select tools and techniques to solve a problem. You'll also investigate appropriate use of media to convey meaning and how planning techniques can help you to complete tasks in an organised way to help you meet set deadlines.

Course Outline

R093: Creative iMedia in the media industry

This unit will teach you about the sectors, products and job roles that form the media industry. You will learn the legal and ethical issues and processes used to plan and create digital media products. You'll also learn how media codes are used to convey meaning, create impact and engage audiences.

You will learn how to choose the most appropriate format and properties for different media products.

R094: Visual identity and digital graphics

Here, you learn how to develop visual identities for clients based on their client brief. You'll be able to apply the concepts of graphic design to create original digital graphics which incorporate the visual identity of the client to engage the intended target audience.

Additional Coursework Unit

The course consists of five additional units of which one will be selected from the following list: comic book design, animation, interactive digital media, videography and digital games. The choice of unit will be decided when the course begins by surveying the students in the group to decide which option is most popular and suited to the interests and skills of the group.

How will I be assessed and examined?

External Examination R093 Creative iMedia in the media industry

Centre Assessed Tasks R094 Visual identity and digital graphics
Additional coursework unit

What are the career opportunities and progression routes?

This course provides the perfect opportunity for progression by studying Level 3 Cambridge Technical in Digital Media or following a fully vocational route with an apprenticeship in digital media. There are a whole multitude of careers you can access with this qualification including graphic designer, app developer, storyboard artist, web developer, videographer, digital media marketing and many other roles across print, audio and audio-visual media.

AQA GCSE French
Specification Code 8652
QAN 610/2790/X

Why study French?

Learning French opens you up to an exciting new world. Through learning another language, you will not only develop your communication skills, but also an understanding of different societies and cultures enabling you to develop into a global citizen who can see the world from a new perspective. When learning French, you do not simply learn a language; you learn communication, adaptability, confidence, problem-solving and analytical thinking – skills which are valued by universities and employers alike.



Course outline

The GCSE course will allow you to develop practical language skills so that you can communicate effectively as a tourist, in the work-place and in general social situations as well as learning more about life in French-speaking countries today. Students will take an active part in developing the four skills of listening, speaking, reading and writing.

The main GCSE topic areas are:

Theme 1: People and lifestyle • Identity and relationships with others • Healthy living and lifestyle • Education and work

Theme 2: Popular culture • Free time activities • Customs, festivals and celebrations • Celebrity culture

Theme 3: Communication and the world around us • Travel and tourism, including places of interest • Media and technology • The environment and where people live.

How will I be assessed and examined?

The GCSE assessment consists of four exams; listening, reading, writing and speaking. Each exam is worth 25% of the overall GCSE grade. The four exams will take place at the end of Year 11 and students will sit either the foundation or higher tier.

What are the career opportunities and progression routes?

In our globalised world, languages are becoming more and more of an asset in any job application. The practical skills developed when learning a language such as the ability to solve problems, give presentations and communicate effectively will enhance your employment prospects whatever your choice of career. Obvious career paths link to tourism, business, education, interpreting and translation, but other areas which also offer opportunities to use and develop language skills include but are not limited to marketing, engineering, manufacturing, media, the culture sector, business services, public administration, the fashion industry and even medicine. Over 70% of British companies conduct some business abroad and many companies say they are losing business because of poor language skills in the British workforce. Studying GCSE French would be beneficial for any student who wants to boost their employability and expand their job opportunities.

GCSE Geography

**GCSE AQA
Geography
Specification
Code 8035 QAN
601/8410/3**

Why study Geography?

Geography is a fairly unique subject because it looks at both the physical structure of the planet and the social structure (i.e. how we affect our environment and how it affects us). There has never been a better or more important time to study geography. With the growing importance of issues such as climate change, migration, environmental degradation, and inequalities, geography is one of the most relevant courses you could choose to study. Learning through geography helps us all to be more socially and environmentally sensitive, better informed, and more responsible as citizens and employees.



Course outline

Students will study the AQA GCSE and they will sit 3 exams, two of 1 hour 30 minutes and one of 1 hour. The link to the new specification can be found at:

<http://www.aqa.org.uk/subjects/geography/gcse/geography-8035>

Paper 1: Living with the Physical Environment. Students choose a range of questions, some of which are data response and multiple choice and others which are far more challenging and require longer, essay style answers. This assessment style is the same for all three papers. The areas of study in Paper 1 are hazards, physical landscapes of the UK, tropical rainforests and deserts.

Paper 2: Challenges in the Human Environment. The areas of study are urban issues and challenges in London and Lagos, the changing economic world, the challenge of resource management focusing on food issues.

Paper 3: Geographical Applications. This is a mixture of pre-release material on a relevant geographical issue and fieldwork skills. Students will spend 1 day doing fieldwork in Seaham, which demonstrates the interaction between human and physical geography, and they are examined on the results and processes.

How will I be assessed and examined?

There are 3 written papers:

- Paper 1 1 hour 30 minutes/ 35%
- Paper 2 1 hour 30 minutes/ 35%
- Paper 3 1 hour long/ 30%

Each paper has a mix of short multiple-choice questions as well as longer extended answers.

What are the career opportunities and progression routes?

Students can follow a huge range of careers having studied Geography; these range from G.I.S (Geographic Information Systems) operator, catastrophic modeller, emergency planner, military, urban planner, environmental lawyer, environment agency, meteorologist, geologist, or volcanologist. It also supports students who are more interested in science-based subjects as the discipline has both arts-based skills of essay writing and numeracy and statistical skills which work well with STEM subjects.

CNAT Health and Social Care

Level 1/Level 2 Cambridge National Health and Social Care QAN 603/7116/X

The course is a practical and work-related course. You study by completing assignments that are based on realistic workplace situations and activities. The course gives students the opportunity to gain a broad understanding and knowledge of the health and social care sector. You will be given the responsibility to work independently and the opportunity to gain skills in teamwork, leadership, problem solving and communication. You will learn the essential skills needed to support people with a wide range of needs, from babies and toddlers to adults and the elderly. This course is designed for those who are interested in a career in any of the health professions and provides a suitable foundation for learners for progression onto further education. The Cambridge National Award is equivalent to one GCSE.



Course outline

- **Core units include:**

- R032: Principles of care in health and social care settings: Students will develop knowledge about the importance of the rights of service users, person-centred values and how to apply them. They will also learn about the importance of effective communication skills when providing care and support for service users in health and social care settings and procedures and measures used to protect individuals such as safeguarding, hygiene and security in preparation for their external examination.

- R033: Supporting individuals through life events: Students will learn about life stages and the factors that affect them. They will understand expected and unexpected life events and the impact they will have on physical, social/emotional and socio-economic aspects of an individual's life, examining the support needed and how this meets the needs of a specific individual – Internally assessed through coursework.

- Unit R035: Health promotion campaigns: Students can explore various public health challenges the country faces. They will understand the factors affecting a healthy lifestyle, so that campaigns can be designed to target different groups of people. They will learn how to plan and deliver a small-scale health promotion campaign. They will develop their work-related skills that are essential for working with adults and children – internally assessed through coursework.

How is the course assessed?

Assessment includes one externally assessed unit. The remaining units are internally assessed and based on a credit system. At the end of the course students will be awarded a Pass, Merit, Distinction or Distinction* grade (4, 5/6, 7/8 or 9 equivalents). This will be calculated from the credits achieved throughout the course.

What are the career opportunities and progression routes?

Students gaining this award will have access to a range of careers and further education opportunities. They can continue to study the subject at EMS Sixth Form as Health and Social Care, BTEC Level 3 National A level (single or double option). These courses are aimed at students who are interested in professions in Health Care, Social Work, Teaching, Nursery Working or Nursing, Social Worker, Health Visitor and Midwife & Therapists.

This course is an excellent starting point for all jobs in the NHS or care services.

GCSE History

Edexcel History GCSE (9-1)

Specification Code 1H10

QAN 601/8092/4

Why study history?

History at English Martyrs is a fantastic opportunity for students to study the past to understand the present whilst preparing for the future. We study the Edexcel GCSE History qualification which offers an engaging and flexible course that students enjoy. Studying History helps with vital skills, such as: analysis and evaluation, literacy and communication skills, questioning & listening skills, enquiry & empathy, co-operation and teamwork, sharing opinions, retaining information, and understanding the world around us.



Course outline

Students will study five areas:

Paper Title

Paper 1 (30%) 1h 20	Thematic study: – Crime and Punishment in Britain, c.1000-present (20%) with Historic environment: Whitechapel, c1870-c.1900: crime, policing and the inner city (10%)
Paper 2 (40%) 1h 50	British depth study: (20%) Early Elizabethan England, 1558–88 British study Period study: (20%) Superpower Relations and the Cold War, 1941-91 non-British study
Paper 3 (30%) 1h 30	Modern depth study: Weimar and Nazi Germany, 1918-39 (30%)

How will I be assessed and examined?

Students will be assessed over two years on all components of the key topics for each exam paper in lessons so that they are fully prepared for the final exams. At the end of Year 11, students will be externally assessed:

Paper 1 is a written exam on Crime and Punishment (1 hour 20 mins, 52 marks, worth 30%)

Paper 2 is a written exam on both the Cold War and Early Elizabethan England (1 hour 50 mins, 32 marks for each section, worth 40%)

Paper 3 is a written exam focusing on a modern depth study of Weimar & Nazi Germany 1919-39 (1 hour 30 mins, 52 marks, worth 30%)

What are the career opportunities and progression routes?

History is a highly respected academic subject. Employers and universities recognise GCSE History as developing transferrable skills like analysis, evaluation, independence, explanation and resilience – skills which are relevant to all professions and further education. The study of History has helped many students to enter a whole range of jobs including teaching, museum work, conservation, marketing, publishing, law, the police force, social work, journalism and the civil service.

GCSE Music

GCSE Edexcel Music
Specification Code 1MU0
QAN 601/8204/0

Why study music?

Music is a demanding yet exciting course for students who enjoy listening to, have an interest in a wide range of musical genres and styles, including Classical and Popular music, and enjoy performing on their musical instrument or voice. You will develop confidence in a variety of different disciplines whilst learning new skills working with compositional software used by professional musicians.



Course outline

We will be following the Edexcel specification. The course content will include:

- Western classic tradition 1700-1820
- Musical elements
- Musical language
- Music for Stage and Screen

Students will use Sibelius software to create their compositions and will have the opportunity to record their composition work as well as their performances.

How will I be assessed and examined?

Performing 30% Assessment - Composing 30% Assessment - Appraising 40% Written

Examination Performing

Performing is a compulsory part of the course and as such you must be able to sing or play a musical instrument to succeed. Students will submit solo and ensemble performance work.

Composing

Students will develop their compositional skills and techniques, before completing two compositions in contrasting styles.

Appraising

This part of the course is taken as a formal written exam. Students will research and analyse set musical works, as well as developing their skills in analysing unfamiliar music.

What are the career opportunities and progression routes?

Many students wish to build upon the skills developed during their GCSE Music studies by studying A Level Music at The English Martyrs School and Sixth Form College. This course encourages active musicianship and leadership within The English Martyrs community and participation in musical activities both in and out of Sixth Form.

Career Opportunities

- Musician
- Composer / Arranger
- Teacher / Lecturer
- Armed Forces Musician
- Music Therapist
- Sound Technician
- Music Publishing

BTEC Performing Arts

Pearson BTEC Level 1/Level 2 Tech Award in Performing Arts

**Specification Code YPR74 QAN
603/0406/6**

Why study Performing Arts?

Performing Arts offers the opportunity to express your talent and determination as part of a varied, skilled and passionate group of performers. Whether you choose to sing, dance, act or to be part of a technical team, the confidence and skills gained through completion of this course are invaluable to any given career path.



You will develop confidence, become articulate in front of others and learn how to organise and develop complex projects as part of a team. You will also develop and hone the range and high standard of skills required if you wish to pursue a career in a Performing Arts-related field.

Course outline

This is a practical, vocational course, suitable for students with a range of previous experience, including those who have none at all, but are enthusiastic about trying something new. The course consists of three units of study spread across the two years, developing your practical and written skills to a high standard. Lessons focus primarily on musical theatre skills and many students complete all assessments as an actor, singer and dancer. You can also choose to be assessed on technical, backstage or design skills in some units. Units studied include:

- Exploring the Performing Arts
- Developing Skills and Techniques in the Performing Arts
- Performing to a Brief

How will I be assessed and examined?

The qualification consists of three components that will give you the opportunity to develop a broad knowledge and understanding of the performing arts industry and specialist skills and techniques in acting, dance and musical theatre at Levels 1 and 2.

Components 1 and 2 are assessed through internal assessment, which consists of regular workshops and reflective, evaluative written work. Component 3: Performing to a Brief - will require you to apply performance skills and techniques in response to a brief and stimulus, developing a group workshop performance.

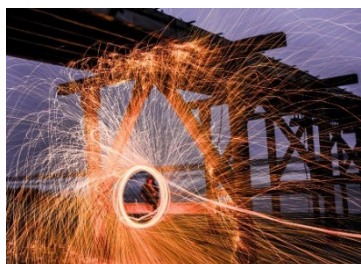
What are the career opportunities and progression routes?

Many students wish to build on the skills developed during their Performing Arts BTEC by studying the Cambridge Technical Level 3 Extended Certificate qualification in Performing Arts at The English Martyrs Catholic School and Sixth Form College.

This vocational course is designed to give you the skills to follow a variety of career pathways. As well as leading to performing arts careers, studying this subject opens up a range of other possibilities in jobs that involve working with people and it is one of the most popular subjects for students interested in studying Law, English and other subjects related to the arts.

GCSE Photography

**AQA GCSE Photography
Specification
Code 8206
QAN 601/8088/2**



Why study Photography?

GCSE Photography is a fantastic opportunity for you to explore your creative talents through the use of new media such as digital SLR cameras, digital manipulation software (Adobe Creative Cloud), iPads, a purpose-built Photography department comprising of individual work areas, a professional portrait studio and a photographic darkroom.

Course outline

When utilising such specialist photographic facilities, you will produce a personal portfolio of work covering a variety of topics and photographic styles. You will also be encouraged to think artistically about your photographic work, and you will be expected to experiment with traditional art materials to produce innovative and unique pieces of photographic artwork.

If you would like to challenge yourself artistically and creatively, whilst experimenting with a variety of photographic media, then choose GCSE Photography. The subject will provide you with a foundation of skills which will be invaluable if you seek to pursue a career in the creative industries. The course is also supplemented by terrific trips giving students the opportunity to explore locations locally, nationally and internationally such as Newcastle, London, Barcelona and New York City.

How will I be assessed and examined?

Component 1: Portfolio

The portfolio is 60% of your GCSE grade. You will have an opportunity to learn and improve skills before completing a sustained project and an experimental unit. Only your best work will be selected for assessment. A portfolio and externally set units are marked internally and validated by a visiting exam board moderator.

Component 2: Externally Set Assignment (Exam)

Seven externally set themes/questions are given to you from the exam board in January of Year 11. You will have approximately 3 months' preparation time in which to research your chosen theme and develop a final idea to produce over 10 hours in exam conditions. The exam is completed in the Art Department during manageable sessions over a few days. This accounts for 40% of your GCSE grade.

What are the career opportunities and progression routes?

After successfully completing GCSE Photography, students can join an A Level course in Art and Design, Textiles, Photography, 3D Art and Employment and Graphic Design. This is usually followed by a foundation course of one year in a regional art college, or direct entry to a specialised degree, such as architecture, computer animation, interior and industrial design, fashion, photography and graphics.

Career Opportunities:

Make an impact and shape your environment in the future by choosing one of the following careers: Graphic Designer, Packaging Designer, Photojournalist, Stylist, Advertising, Architect, Fashion Designer, Video Editor, Film Director, Jewellery, Animator, Medical Illustrator, Interior Designer, Stage/Costume Designer, Fabric Designer.

GCSE Physical Education

**AQA GCSE Physical
Education Specification
Code 8582
QAN Code 601/8279/9**

Why study Physical Education?

You will gain many valuable skills from studying Physical Education that will help you in other GCSE and A-level subjects as well as your future career. **Communications skills** will be developed through playing team sports and problem solving with others; skills that will help you in the workplace. Every employer looks for candidates who are able to communicate well verbally and in writing. **Social skills** - Physical Education is a very social subject and can involve a lot of group work. You will learn how to communicate and socialise with people in an effective way. When you start a job, you will encounter people from a range of different backgrounds, each with different personalities. Studying PE will help you learn how to best communicate with people in a team in order to produce the best results. **Analysis and evaluation** - At GCSE level, PE involves analysing your own and others' performance while looking for ways it could be improved. This is a particularly useful skill to have in your career as you'll often have to critique your own work and identify areas for improvement. If you work in management, you will also benefit from the soft skills that PE teaches and will learn how to deliver messages clearly and effectively. **Physical fitness** - As a PE student, you will also benefit from being physically fit! Not only will this help you in the physical side of the subject itself, but it will also improve your general well-being. Doing regular exercise is proven to relieve stress and promote good mental health.



Course outline

The theoretical content will include applied anatomy and physiology, movement analysis, physical training, use of data, sports psychology, socio-cultural influences and health, fitness and well-being. There is also a practical element to the course in three different physical activities.

How will I be assessed and examined?

This qualification is linear. Linear means that students will sit all of their exams and submit all their non-exam assessment at the end of the course.

There are two written exams (each 1 hour 15 minutes), consisting of a mixture of multiple choice/objective test questions, short answer questions and extended answer questions.

Paper 1: The human body and movement in physical activity and sport (78 marks – 30% GCSE).

Paper 2: Socio-cultural influences and well-being in physical activity and sport (78 marks – 30% GCSE).

There is a non-exam assessment based on practical performance in physical activity and sport. This is assessed as a practical performance in three different physical activities in the role of player/performer (one in a team activity, one in an individual activity and a third in either a team or in an individual activity). For each of their three activities, students will be assessed in skills in progressive drills (10 marks per activity) and in the full context (15 marks per activity). There is also an analysis and evaluation of performance to bring about improvement in one activity. Students will be assessed on their analysis (15 marks) and evaluation (10 marks) of performance to bring about improvement in one activity. These are assessed by teachers and moderated by AQA, the exam board (100 marks - 40% of GCSE).

What are the career opportunities and progression routes?

GCSE PE is an accepted and recognised qualification for those intending to pursue a career in Leisure Management, Coaching, Teaching, Fitness Training and the Armed Forces. Due to the high level of Biology and Physiology in the content of the course, it can be useful in careers such as Medicine, Nursing, Care of the Elderly and Physiotherapy.

GCSE PE can provide a sound platform for further study on the Sport and PE Course at the English Martyrs Sixth Form or perhaps a degree in Sport or PE at university.

CNAT Sports Studies

Cambridge National Sport Studies Level 1/2

Specification Code J829

QAN 603/7107/9

Why study Sport Studies?

Our Cambridge National in Sport Studies will encourage students to think for themselves about the study of sport and the application to real life practical sport, leadership and evaluation of the skills required there. They will study topics affecting sport through the contemporary issues unit, both play and lead sporting activities, as well as having the chance to explore the world of outdoor adventurous sport.

Course outline

Level 2 Sport Studies (OCR J829) involves three core units:

- **Unit R184 (Contemporary Issues in Sport)**, an exam on topics including barriers to participation, technology, NGBs, and major events. **(40% of final grade)**
- **Unit R185 (Performance and Leadership)**, practical coursework assessing performance in two sports, skill improvement, and leading activities. **(40% of final grade)**
- **R187 (Outdoor & Adventurous Activities)**, written course work focusing on adventurous pursuits, all designed to build practical and analytical skills for the sport industry. **(20% of final grade)**

How will I be assessed and examined?

You will carry out and exam, written assignments and practical tasks throughout the course. Your teacher will assess two units, on a credit system and so you will receive feedback as to the progress you are making. The assessment for unit R184: Contemporary issues in sport is a written examination which is marked externally.



What are the career opportunities and progression routes?

This qualification will introduce young people to a wide variety of career opportunities within sport.

The course counts equally alongside GCSEs when applying to do further study in either general or vocational qualifications. With further training or study, students can follow careers in: Teaching; Sports & Exercise Coach; Sports & Exercise Instructor; Personal Trainer; Armed Services; Sports Administration; Physiotherapy; Lifeguard and Swimming Attendant; Sports Journalist and Photographer; Sport Centre Attendant; Outdoor Education Instructor; Coastguard; Firefighter; Osteopath; Riding Instructor; Professional Sportsman/Woman.

CNAT Engineering Design

Cambridge National in Engineering Design Level1/2
Specification Code J822
QAN 603/7086/5

Why study Engineering Design?

Cambridge National in Engineering Design will inspire and equip you with the confidence to use skills that are relevant to the sector and the wider industry. It's a vocational qualification, equivalent in value to a GCSE and contains both practical and theoretical elements.

Course outline

This qualification will enable you to learn about the process of engineering design and understand how it can be used to design effective solutions for a given design brief. You will develop the ability to communicate your design ideas through the use of sketches and engineering drawings and computer aided design. You will also be able to evaluate the design of a product, through the disassembly of existing products or the use of modelling for new designs.

How will I be assessed and examined?

You will study the key aspects of engineering design and have the opportunity to apply what you learn through a number of experiences. This will involve you studying three mandatory units:

R038: Principles of engineering design (40%)

This is assessed by an exam. In this unit you will learn about the design process, and all of the stages that are involved. Topics include:

- o Designing processes
- o Designing requirements
- o Communicating design outcomes
- o Evaluating design ideas

R039: Communicating designs (30%)

This is assessed by a set assignment. In this unit you will learn how to use sketching and engineering drawings to communicate your ideas. Topics include:

- o Manual production of freehand sketches
- o Production of engineering drawings
- o Use of computer aided design (CAD)

R040: Design, evaluation and modelling (30%)

This is assessed by a set assignment. In this unit you will learn virtual and physical modelling skills. Topics include:

- o Product evaluation
- o Modelling a prototype



What are the career opportunities and progression routes?

This course could lead to various course options post 16: By developing applied knowledge and practical skills, this course will help give you the opportunity to progress on to A Levels, Level 3 vocational qualification, T levels and apprenticeships. Students might also choose to pursue this further at degree level

Careers: Multitude of Engineering roles across the sector.

GCSE Fashion and Textiles

WJEC Fashion & Textiles

Specification Code
C600QS

QAN 603/1121/6

Why study Fashion & Textiles?

- You enjoy being creative.
- You have an imaginative way of solving problems.
- You are good at visualising 3D concepts.
- You are skilled in practical work.
- You enjoy using machinery and tools.



Course outline

The course will develop a wide range of practical skills incorporating surface embellishment, joining and finishing, combining materials, and colouring fabrics.

Be innovative! Be imaginative! Be original! Fashion and Textiles is a course which students will find stimulating and rewarding. The emphasis is on a practical approach, developing new skills of pattern cutting, garment construction and surface embellishment. The next generation of designers need to focus on a sustainable design and one of the key elements of the course allows for students to consider how future designs will impact on the world in which we live.

On this course you will:

- Solve problems in a creative way using a variety of materials and techniques.
- Design and make prototypes that meets set design briefs.
- Use a combination of embellishment and construction techniques to develop sustainable products.

How will I be assessed and examined?

Written exam: 2 hours 50%

Non-exam assessment (NEA) 50% approximately 30–35 hours

This is the practical design and make element of the course. Themes to be released annually by AQA on 1 June in the year prior to the submission of the NEA. Students will produce a prototype and a folder of evidence.

Work will be marked by teachers and moderated by AQA.

What are the career opportunities and progression routes?

Fashion and Textiles is a growing industry as our need for fashion products and interiors increases. Potential careers include fashion designer, buyer, pattern maker, machinist, technician, clothing technologist, quality control, purchaser, marketing, teacher, journalist etc. Many of our past students who have studied Fashion and Textiles have gone on to study at A level and go on to further education at Foundation and Degree level at universities.

GCSE Hospitality and Catering

WJEC Level 1/2 Hospitality and Catering

Specification Code 5569

QAN code 603/7022/1

Why study hospitality and catering?

Being able to plan, prepare and present food is an essential skill within the hospitality and catering industry. This course equips you with theoretical knowledge about the industry as well as enabling you to develop practical skills in planning, preparing and cooking a variety of dishes. You'll master culinary skills and apply appropriate knowledge of food principles when preparing meals and making food choices.

Course outline

You will develop a wide range of food preparation and cooking skills during the course and present nutritional dishes to meet the specific needs of a client. Alongside practical lessons, you will learn about different types of providers, legislation, food safety and the roles and responsibilities within the sector. Furthermore, this course contributes to the development of an array of transferrable skills from problem solving and communication to organisation and time management.

How will I be assessed and examined?

The qualification is internally and externally assessed. At the end of the course students will be awarded a Pass, Merit, Distinction or Distinction* grade (4,5/6,7/8 or 9 equivalents).

Unit 1: Written paper (externally assessed) 40%

Unit 2: Non-examination assessment (internally assessed) 60%

Unit 2 task: You will work through a scenario provided by the exam board. You will propose 4 nutritious dishes that you think could be served in the catering outlet. You will need to prepare, cook and serve 2 dishes with accompaniments during a set practical session.

What are the career opportunities and progression routes?

According to the British Hospitality Association, hospitality and catering is Britain's fourth largest industry and accounts for around 10% of the total workforce. Since 2010, over 25% of all new jobs have been within the hospitality and catering sector with the majority of new roles falling within the 18-24 age groups. After completing the WJEC Vocational Award in Hospitality and Catering you may be interested in progressing to other qualifications relevant to working in the sector or pursuing an apprenticeship in the field.



DATES FOR YOUR DIARY

Online options form will arrive by email on
Thursday 19th February 2026

The deadline for choosing your options is
Friday 13th March 2026

Email questions or queries to
ems-options@ems.bhcet.org.uk