

LABOUR MARKET INFORMATION

HEALTHCARE & LIFE SCIENCE



WHAT IS THE HEALTHCARE & LIFE SCIENCE SECTOR?

The healthcare and life sciences sector is a dynamic industry that includes a wide range of organisations focused on improving health and wellness. This sector covers healthcare services like hospitals, primary and specialised care, mental health services, and home healthcare.

It also encompasses pharmaceutical and biotechnology companies developing new drugs and therapies, medical device manufacturers, and health IT innovations like electronic health records and telemedicine. Together, these areas drive advancements in patient care, medical research, and healthcare technology.

DID YOU KNOW...

The healthcare and life sciences sector in Tees Valley is expanding, driven by investments in local hospitals, research facilities, and universities. Major employers include the **South Tees Hospitals NHS Foundation Trust, Tees, Esk and Wear Valleys NHS Foundation Trust**, and several private healthcare providers?



The region has strong research initiatives, particularly in biotechnology and pharmaceuticals, with institutions like the **National Horizons Centre** playing a significant role.

Approx...

45,000

people are employed in **healthcare and life science** jobs across Tees Valley.

Expected to grow to...

55,000

by 2030, driven by an aging population and **advances in medical technology**.



Emerging trends include **personalised medicine, advancements in genomics, and the integration of digital health technologies.**

WHAT JOBS COULD YOU DO?



**CARE
WORKER**



**HOSPITAL
DOCTOR**



**BIOMEDICAL
SCIENTIST**



**CHILDREN'S
NURSE**



PHARMACIST



MIDWIFE



PARAMEDIC



**ALLIED
HEALTHCARE
PROFESSIONAL**



PSYCHOLOGIST

WHERE ARE THE JOBS MOST NEEDED?



NURSING & CLINICAL CARE



MEDICAL IMAGING & DIAGNOSTICS



HEALTHCARE ADMIN & MANAGEMENT



PHARMACEUTICAL SCIENCE



PUBLIC HEALTH



MENTAL HEALTH SERVICES



BIO-TECHNOLOGY



ALLIED HEALTH CARE PROFESSIONALS

LOCAL EMPLOYERS INCLUDE...

JM Johnson Matthey
Inspiring science, enhancing life

NHS
North Tees and Hartlepool
NHS Foundation Trust

voyagecare

semcorp



cpi

NHS
North East
Ambulance Service
NHS Foundation Trust

NHS
South Tees Hospitals
NHS Foundation Trust

care UK

NHS
County Durham
and Darlington
NHS Foundation Trust

Nuffield Health

FUJIFILM
Di-synth
biotechnologies

NATIONAL HORIZONS CENTRE

NHS
Tees, Esk and Wear Valleys
NHS Foundation Trust



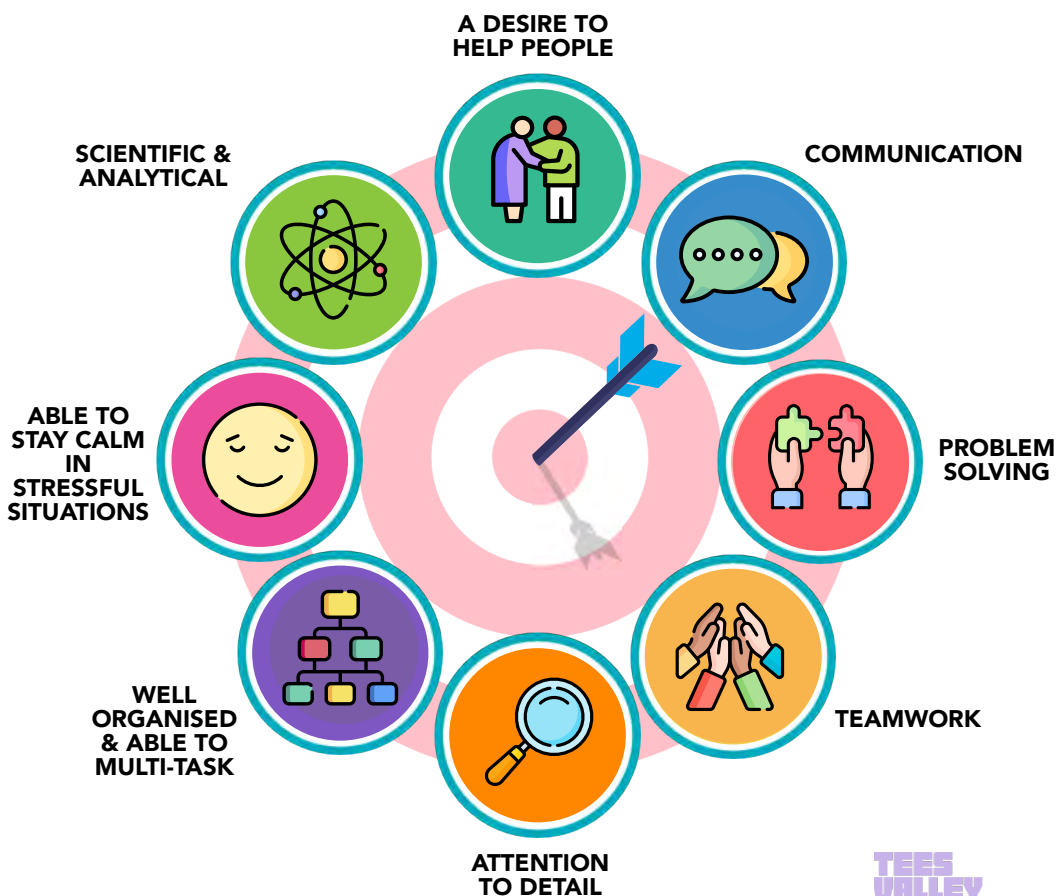
ALLIED PSYCHOLOGICAL SERVICES

TEES VALLEY

HEALTHCARE & LIFE SCIENCE

WHAT SKILLS CAN HELP YOU?

Discover the essential skills that can boost your success in the healthcare and life sciences field.



SKILLS IN ACTION



A DESIRE TO HELP PEOPLE

Genuinely caring for patients or clients, offering support and comfort when they need it most.



COMMUNICATION

Clearly explaining medical procedures to patients or discussing care plans with families.



PROBLEM SOLVING

Addressing a patient's symptoms or finding ways to improve their comfort and well-being.



TEAMWORK

Collaborating with doctors, nurses, and other care providers to ensure the best patient care.



ATTENTION TO DETAIL

Accurately recording patient information and noticing small changes in their condition.



WELL ORGANISED & ABLE TO MULTI-TASK

Managing multiple patient care tasks at once, such as administering medication and updating records.



ABLE TO STAY CALM IN STRESSFUL SITUATIONS

Maintaining composure during medical emergencies to provide effective care.



SCIENTIFIC & ANALYTICAL SKILLS

Using scientific knowledge to understand patient symptoms and analysing test results to determine the best treatment.

WHAT QUALIFICATIONS CAN HELP YOUR CAREER?

GCSE

SECONDARY SCHOOL



Biology: Essential for understanding life and the human body.

Chemistry: Key for medicine, pharmacology, and biochemistry.

Mathematics: Critical for data analysis and scientific calculations.

Physics: Useful for medical technology and physical sciences.

English: Important for communication and understanding medical literature.

Health and Social Care: Provides insight into patient care.

FURTHER EDUCATION



A-LEVELS

Biology & Chemistry: Essential for most healthcare and life science degrees.

Mathematics & Physics: Important for technical and research roles.

Psychology: Useful for mental health and behavioural sciences.

VOCATIONAL COURSES

Health and Social Care: Practical skills for nursing and social care.

Applied Science: Focus on lab work and scientific practice.

T-LEVELS

Health: Prepares for careers like nursing and midwifery.

Healthcare Science: Develops core knowledge and skills that are needed for entry to a range of healthcare occupations.

Science: Suitable for lab and technical roles.

SCAN OR CLICK
THE QR CODE
TO EXPLORE
THE DIFFERENT
PATHWAYS





APPRENTICESHIPS

TEES
VALLEY

Healthcare Assistant Apprenticeship:

Practical experience in patient care, working in hospitals or community settings.

Pharmacy Technician Apprenticeship:

Learn about medications, prescriptions and assisting pharmacists.

Laboratory Technician Apprenticeship:

Hands-on training in scientific research, testing and lab management.

Dental Nurse Apprenticeship:

Training in dental care, assisting dentists and patient support.

Nursing Associate Apprenticeship:

Combines study and practical experience, leading to a nursing role.

Click or Scan the QR code to visit the IfATE Occupational Maps to explore the different Apprenticeships available



HIGHER EDUCATION



UNDERGRADUATE DEGREE

Medicine (MBBS): Become a doctor; requires Biology and Chemistry A-levels.

Nursing (BSc Nursing): Specialise in adult, paediatric or mental health nursing.

Pharmacy (MPharm): Focus on drug development and patient care.

Biomedical Sciences (BSc): Study disease processes and lab techniques.

Biochemistry (BSc): Explore chemical processes in living organisms.

Psychology (BSc): Understand human behaviour and mental health.

Public Health (BSc): Focus on health promotion and disease prevention.

POSTGRADUATE DEGREE

Masters in Public Health (MPH): Advanced study in health policy and epidemiology.

Masters in Clinical Psychology (MSc): Specialise in psychological therapy and research.

Masters in Biomedical Science (MSc): Advanced study in molecular biology and diagnostics.

Masters in Nursing (MSc): Advanced nursing roles and leadership.

DOCTORAL DEGREES (PhD)

PhD in Life Sciences, Medicine, or Public Health: Research-focused careers in academia or industry.

MORE INFORMATION

Scan or click on the QR codes to become more informed about the different jobs and education and training options available to you.

TEES VALLEY JOBS

Explore graduate roles, apprenticeships, or volunteering opportunities.

SCAN ME



NATIONAL CAREERS SERVICE

Explore over 750 different careers. Find out what a job involves and if it's right for you.

SCAN ME



STEP INTO THE NHS

Explore over 350 different roles or take a quiz to find the right role for you.

SCAN ME



TEES VALLEY KEY SECTORS

Explore what's happening across other sectors in the Tees Valley region.

SCAN ME



WHAT NEXT?

TEES
VALLEY

Name:

Date:

I would like to be:

The reasons I chose this are:

**Qualifications and training
required:**

Skills I have:

Skills I need to develop:

My next steps are:

Reviewing my progress: