



The English Martyrs
Catholic School and
Sixth Form College

'Per Unitatem Virtus'



www.ems.bhcet.org.uk

Year 9 Options Brochure 2022

The English Martyrs Catholic School and Sixth Form College
Catcote Road, Hartlepool, TS25 4HA
T: 01429 273790
E: admin@ems.bhcet.org.uk W: www.ems.bhcet.org.uk



Headteacher: Mrs S Crawshaw, BA (Hons), NPQH
CEO: Dame M Regan DBE OBE, DL, M.Ed., B.Ed (Hons), FCIEA, CEA
Deputy CEO: M Shorten M.Ed., BA (Hons)
Chair of Directors: J Wilson BA (Hons), PGCE, NPQH

February 2022

Dear Parent/ Carer

Year 9 is an important year; students have studied a broad curriculum at Key Stage 3 and now is the time when students decide to specialise their studies at Key Stage 4.

We have a comprehensive programme that will support your child in making their Option choices so that they are able to choose subjects that they enjoy and can be successful in.

To ensure all students have a rich and balanced curriculum that secure a strong academic foundation there are core subjects all students will study at Key Stage 4. This includes religious education, English, mathematics, science, physical education, a modern foreign language, and a humanity. Students choose a further two option choices from a range of academic, vocational and practical subjects.

Students will be encouraged to consider what subjects they love and are flourishing in as well what they want to do when they leave college.

Parents and Careers play an important role in supporting young people at this important stage and we appreciate that there is a lot to consider for you and your children. English Martyrs Catholic School and College staff will be available to help you.

We have an Options Evening, Thursday 3rd March where each department will be available to speak to. In addition, each department will be delivering Option presentations during lessons and subjects that are not offered at Key Stage 3 will be introduced in assemblies.

If you need to discuss your child's options further then please email optionsyear9@ems.bhcet.org.uk

With every good wish.

Yours sincerely,

Sara Crawshaw
Headteacher



Mission Statement

The English Martyrs Catholic School and Sixth Form College is

Founded on Truth

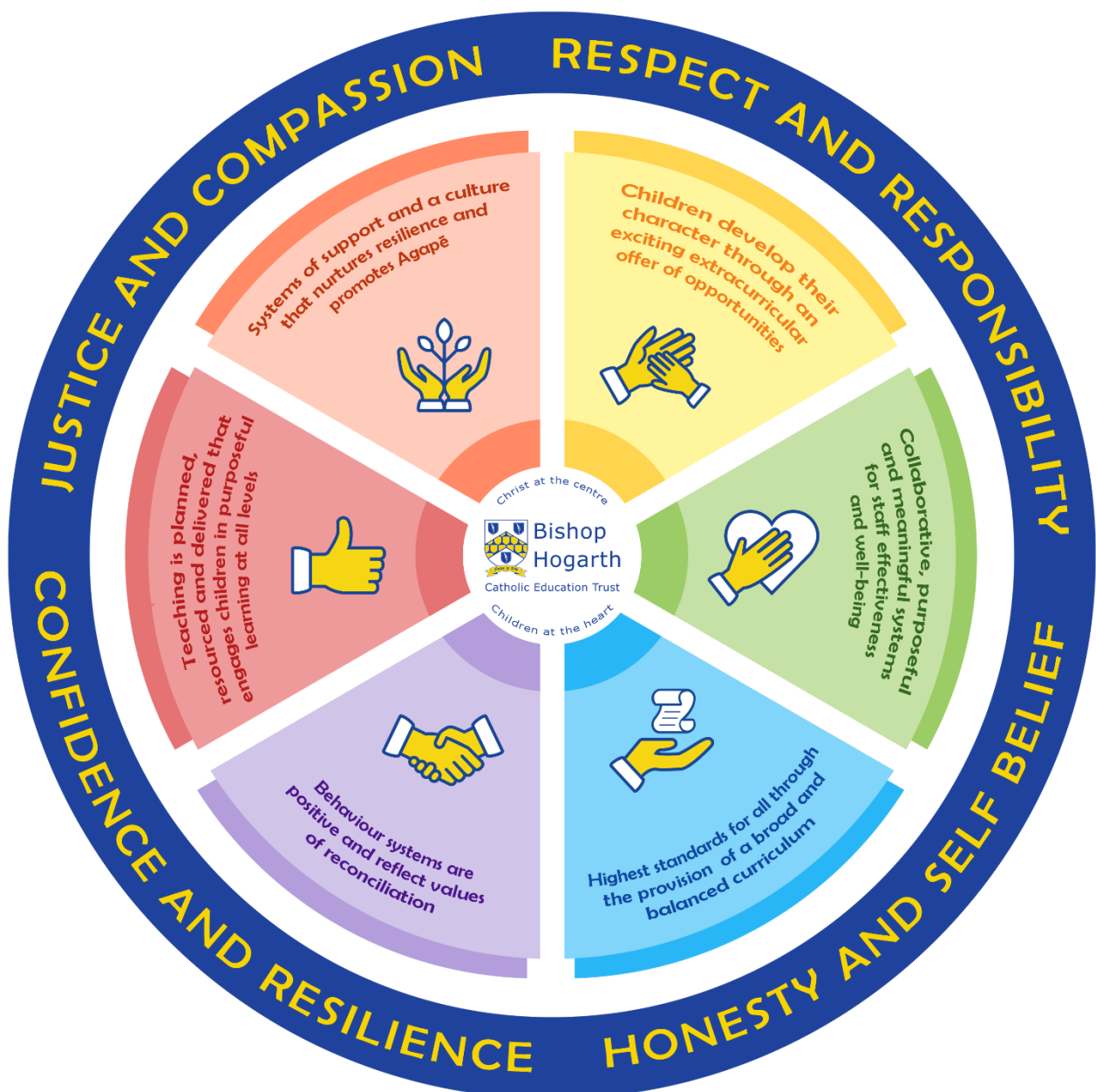
To learn and live the Gospel values on which our faith is rooted.

Built on Justice

Whereby we judge with integrity and wisdom, and act with mercy and compassion.

Animated by Love

Living in community with each other in fairness and with equality as Jesus teaches us.



Advice on choosing your options

Options - Your Next Steps

- Choosing your Options is an exciting time for you to shape your educational career
- By studying a wide range of subjects, you will learn new skills, gain new knowledge and understanding which will shape you as a person and support you in leading a full and happy life.
- You invest in your future and begin the journey of personalising your school career.

With such an important decision it is crucial that you:

- Take your time and carefully consider your choices
- Talk to teachers, Pastoral Leaders, parents and careers advisers.
- Recognise that school offers a broad curriculum to give you a rich education that does not limit your future choices
- If you know what you want to do at university or as a career, ensure you choose the subjects you need.
- Access careers guidance websites: <https://www.careersbox.co.uk>, <http://icould.com> and <https://www.unifrog.org>. In addition. You can also book an appointment with Mrs Liddell, Head of Careers.

How to choose your options

- Consider all the subjects you are good at and the ones you like. This is not always as easy as it seems. Subjects will become increasingly more difficult and you need to be confident that you can achieve your potential.
- It is good to have a balanced timetable with opportunities for academic and practical work.
- Don't choose subjects because your friends are doing them, or you have a favourite teacher. There is no guarantee who will teach you or who your classmates will be.
- Don't drop a subject without full consideration; that subject may be important for your future and could be a necessary qualification for a college course, university place or employment.

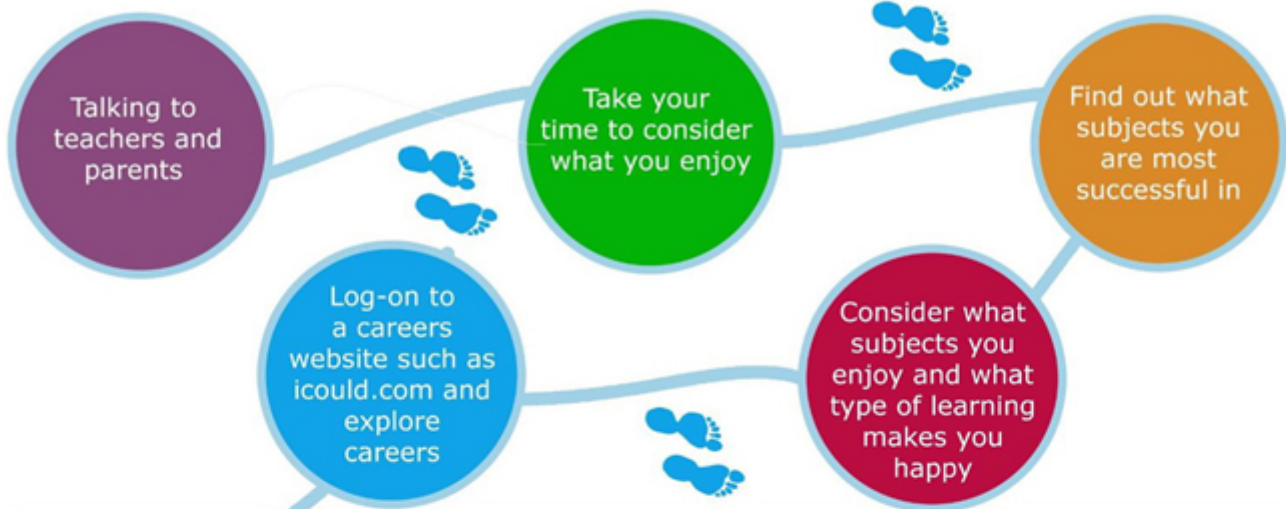
John O'Hara
Assistant Headteacher

Steps to Success



The aim is to choose subjects that you will enjoy, be successful at and will give you a rewarding career.

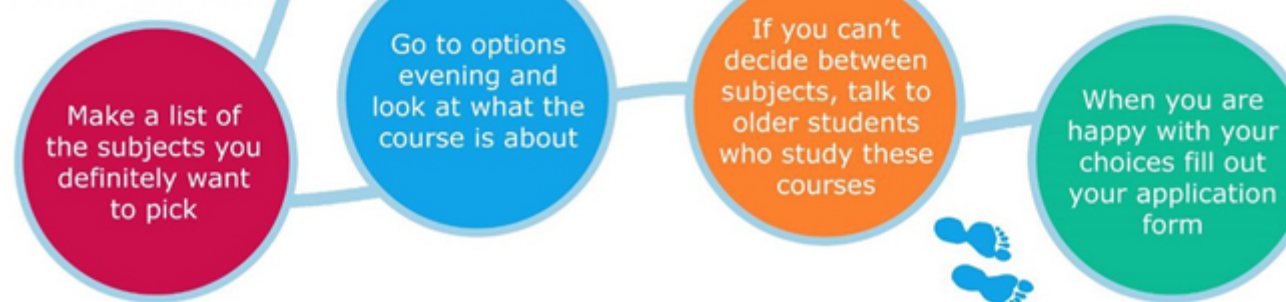
START YOUR JOURNEY HERE ...



THEN ...

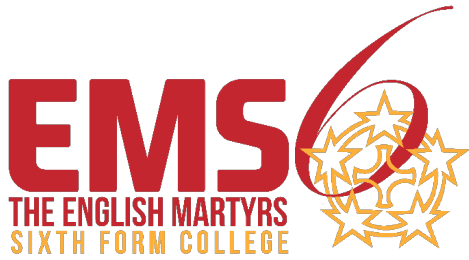


FINALLY ...



Submit the online option form and feel confident that you have made the right choice for you.

What Next?



We strive that all students from English Martyrs School and Sixth Form College follow their ambitions and experience success. We have an excellent tradition of students continuing in education and employment and many going to universities and securing ambitious careers.

The entry qualifications for most Level 3 courses are a minimum of 5 passes at GCSE at grade 4 or above including English and maths. However, all students are challenged to achieve their best and aim higher than the minimum entry grades.

Students in Year 11 are encouraged to consider a range of post 16 provision. Our Sixth Form is a natural next step into Year 12 and 13 for many of our students and can fully support students as they learn from Year 7 to Year 13.

Our Sixth Form offers a broad range of A-Levels, Applied A-Levels and BTECs. The Sixth Form currently has over 30 courses at post-16. Prospective sixth form students are supported through their option choices to ensure they have high quality careers advice and guidance.

We have:

- Dedicated and specialised Key Stage 5 staff teachers
- Excellent modern facilities
- New clubs, societies and sporting opportunities
- Dedicated Sixth Form Leadership and Form staff
- Excellent and dedicated Sixth Form Careers advice
- Bursaries and financial support

There is a wide range of extra-curricular courses/activities available in the Sixth Form at English Martyrs including:

- Young Enterprise Scheme
- Dinner dances/Christmas and Summer Balls
- Opportunity for trips and pilgrimages
- Challenging and enlightening retreats
- Duke of Edinburgh Scheme
- Leadership opportunities
- Opportunities to have fun and further develop social skills



We hope that post Covid our Foreign Language students are able to spend some time in France, Germany or Spain. The College is also involved in international projects and opportunities. We also hope to reinstate the annual pilgrimage to Lourdes with HCPT (The Pilgrimage Trust) where Sixth Form students have the opportunity to look after children less fortunate than themselves.

English Martyrs Sixth Form is an excellent place to study and students go on to study at universities across the country, including Cambridge, Oxford, Durham, York, Warwick, Bristol, University College London and Newcastle

If you would like more information on any aspect of our Sixth Form then please contact Leah Henderson, Director of Sixth Form 01429 273790

English Language

**AQA English
Language
Syllabus Code
8700 QAN
601/4292/3**



Why study English Language?

English forms the fundamental building blocks of a solid education. It allows us to learn about different cultures, experiences, and ideas, so widening our knowledge of life. English firmly underpins all other aspects of the curriculum and encourages creative thinking, allowing students to express their understanding in a variety of ways.

Course outline

The course is designed to develop curious and confident speakers and writers with an in-depth understanding and love of language and literature. Students will read a wide range of both fiction and non-fiction texts. Students will have a clear understanding of how writers use different linguistic, structural, and generic conventions to create meaning and will be able to communicate clearly, accurately and with confidence, adapting language and style for a wide variety of different audiences, purposes, and genres.

How will I be assessed and examined?

All students are assessed through external examinations. There are no tiers of entry; all students sit the same papers. All examinations are linear, with papers set at the end of Year 11.

Examinations are as follows:

Awarding Body: AQA *Specification Code:* English Language (8700)

Paper 1 – Explorations in Creative Reading and Writing (50% of GCSE)

Section A: Reading - One fiction text **Section B: Writing** – Descriptive or narrative writing (80 marks)

Paper 2 – Writers' Viewpoints and Perspectives (50% of GCSE)

Section A: Reading – Two non-fiction texts **Section B: Writing** – Writing to present a viewpoint (80 marks)

Compulsory Non-examination Assessment: Spoken Language

Candidates present, respond to questions and feedback whilst demonstrating the use of Standard English. This unit is assessed by the class teacher throughout the course.

What are the career opportunities and progression routes?

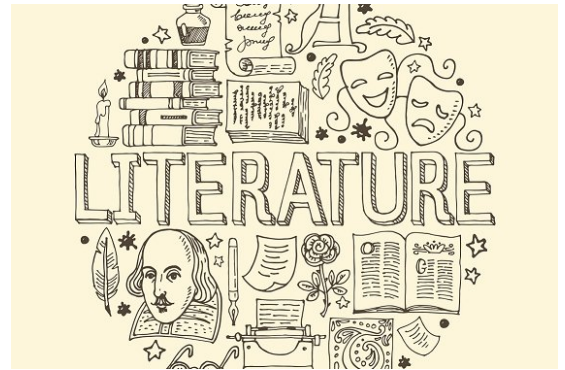
Many students choose to go on and study English courses after GCSE, whether at A level or university. At English Martyrs, we offer both A Level English Language and A Level English Literature in Sixth Form. Equally, a good grade in English at GCSE is a requirement of many post-16 pathways.

English is an excellent subject to study at university as it provides a solid qualification for entry into careers, such as journalism, the Media, Law, clerical and administration work, publishing, politics, and teaching. It is also valued in medical applications.

**GCSE AQA English
Literature Syllabus
Code 8702
QAN 601/4447/6**

Why study English Literature?

English forms the fundamental building blocks of a solid education. It allows us to learn about different cultures, experiences, and ideas, so widening our knowledge of life. English firmly underpins all other aspects of the curriculum and encourages creative thinking, allowing students to express their understanding in a variety of ways.



Course Outline

During the course, you will study the following texts:

- One modern play: *An Inspector Calls*
- One Shakespearean play: *Macbeth*
- One Nineteenth Century Novel: *A Christmas Carol*
- A selection of 15 poems selected from the AQA Poetry Anthology: *Power & Conflict*

How will I be assessed and examined?

All students are assessed through external examinations. There are no tiers of entry; all students sit the same papers. All examinations are linear, with papers sat at the end of Year 11.

Examinations are as follows:

Awarding Body: AQA *Specification Code:* English Literature (8702)

Paper 1 – Shakespeare and the 19th-century novel (40% of GCSE)

Paper 2 – Modern texts and poetry (60% of GCSE)

These will be closed book examinations. (This means that you will not be allowed to take any notes or copies of the texts that you have studied into the exam.) Throughout the course there will be various opportunities in class to practise exam style questions and develop the skills needed to succeed in your final exams.

What are the career opportunities and progression routes?

Many students choose to go on and study English courses after GCSE, whether at A level or university. At English Martyrs, we offer both A Level English Language and A Level English Literature in Sixth Form. Equally, a good grade in English at GCSE is a requirement of many post-16 pathways: college, sixth form, apprenticeships, for example.

English is an excellent subject to study at university as it provides a solid qualification for entry into careers, such as journalism, the Media, Law, clerical and administration work, publishing, politics, and teaching, to name but a few. It is also valued in medical applications.

Mathematics

EDEXCEL Higher
Syllabus Code 1MA1
QAN 601/4700/3

OCR Foundation
Syllabus Code J560
QAN 601/4606/0



Why study mathematics?

Most universities and employers will want you to have a pass at GCSE and future career prospects will be limited without it. Having an understanding of mathematics underpins many areas of our lives and studying mathematics also develops transferable skills such as problem solving and reasoning.

Course outline

The aims and objectives of GCSE Mathematics are to enable students to:

- Develop fluent knowledge, skills and understanding of mathematical methods and concepts
- Acquire, select and apply mathematical techniques to solve problems
- Reason mathematically, make deductions and inferences and draw conclusions
- Comprehend, interpret and communicate mathematical information in a variety of forms appropriate to the information and context

Mathematics GCSE will assess content covered in Number, Algebra, Ratio, Proportion and Rates of change, Geometry and Measures and Probability and Statistics

How will I be assessed and examined?

Each student will be entered for one of the following tiers: Foundation or Higher. Students will take three examination papers within each tier.

Tier	Grade Range	Assessment Component	Time
OCR Foundation <i>Each paper has 100 marks</i>	1 -5	Paper 1 calculator Paper 2 non-calculator Paper 3 calculator	1 hour 30 minutes 1 hour 30 minutes 1 hour 30 minutes
Edexcel Higher <i>Each paper has 80 marks</i>	4-9	Paper 1 non-calculator Paper 2 calculator Paper 3 calculator	1 hour 30 minutes 1 hour 30 minutes 1 hour 30 minutes

Certificate of Achievement

If it is felt that students are unlikely to gain a grade 1 at GCSE, they can take the Certificate of Achievement.

AQA Level 2 Further Maths

The AQA Level 2 Certificate in Further Mathematics is one tiered Level 2 linear qualification for learners who:

- Either already have, or are expected to achieve, grades 7, 8 and 9 in GCSE mathematics.
- Are likely to progress to A-Level study in Mathematics and possibly Further Mathematics.
- Paper 1 is a non-calculator assessment and a calculator is allowed for Paper 2.
- Each paper is 1 hour 45 minutes long.
- Each paper has 80 marks.

What are the career opportunities and progression routes?

A grade 5 at GCSE in Mathematics is an important qualification to enable students to progress both in education and in work. Higher Grade (6, 7, 8 or 9) would enable students to progress to A level and beyond. Some possible careers include: actuary, chartered accountant, data analyst, data scientist, investment analyst, investment banker and research scientist.

Modern Foreign Languages

AQA GCSE French;

Specification Code 8658

QAN 601/8157/6

Why study a language?

Learning another language opens you up to an exciting new world. Through learning French, you will not only develop your communication skills, but also an understanding of francophone society and culture enabling you to develop into a global citizen who can see the world from a new perspective. When learning French, you do not simply learn a language; you learn communication, adaptability, confidence, problem-solving and analytical thinking – skills which are valued by universities and employers alike.



Course outline

The GCSE course will allow you to develop practical language skills so that you can communicate effectively as a tourist, in the work-place and in general social situations as well as learning more about life in France today. Students will take an active part in developing the four skills of listening, speaking, reading and writing.

The main GCSE topic areas are:

- Identity and culture (Family and friends, new technologies, free-time activities and customs and festivals).
- Local, national and international areas of interest (Home and local area, social issues, global issues and travel and tourism).
- Current and future study and employment (Studies, school life, post-16 education and careers).

How will I be assessed and examined?

The GCSE assessment consists of four exams; listening, reading, writing and speaking. Each exam is worth 25% of the overall GCSE grade. The four exams will take place at the end of Year 11 and students will sit either the foundation or higher tier.

What are the career opportunities and progression routes?

In our globalised world, languages are becoming more and more of an asset in any job application. The practical skills developed when learning a language such as the ability to solve problems, give presentations and communicate effectively will enhance your employment prospects whatever your choice of career. Obvious career paths link to tourism and business but other areas also offer opportunities to use and develop language skills: marketing, engineering, manufacturing, media, education and even medicine. Over 70% of British companies conduct some business abroad and many companies say they are losing business because of poor language skills in the British workforce. Any student who is considering a career in law, accountancy, tourism, business or education is strongly advised to study at least one language.

The main sectors and industries looking for candidates with language skills include the culture sector, business services, charity work, engineering, the media industry, public administration or the fashion industry. If students wish to take their language learning further, the main career possibilities for language graduates are in education (Language secondary school teacher, teacher of English as a second language, etc.), interpreting and translating and in the tourism and hospitality industry (e.g. tour manager).

Religious Studies

Religious Studies
C120PB WJEC
EDUQAS GCSE
601/88790/0

Why study RE?

Catholic schools exist to provide a Catholic Education and a life based on Gospel values. It is because of this that Religious Education has been described as "the core of the core curriculum". In this subject, students have the opportunity to gain a deeper understanding of themselves and the part they have in

life. It helps them to consider and explore the origins, meanings, purpose and value of life. Students are encouraged to reflect on their own personal response to God, other human beings and moral issues.



Course outline

The new GCSE Religious Studies includes three components; each component is made up of two modules: Judaism includes beliefs and teachings and Practices; Foundational Catholic Theology includes Origins and Meaning and Good and Evil; Applied Catholic Theology includes Life and Death and Sin and Forgiveness. Within these areas students will be expected to demonstrate knowledge and understanding of two religions and of key sources of wisdom and authority; understand the influence of religion on individuals, communities and societies; understanding significant common and divergent views between and within religions and beliefs; apply knowledge and understanding in order to analyse questions related to religious beliefs and values; construct well-informed and balanced arguments on matters concerned with religious beliefs and values.

How will I be assessed and examined?

There are three examinations for each of the components. Students take all exams at the end of Year 11. Within each exam there are two sections: Judaism - Beliefs and Teachings and Practices, Foundation Catholic Theology - Origins and Meanings and Good and Evil, Applied Catholic Theology - Life and Death and Sin and Forgiveness.

What are the career opportunities and progression routes?

A qualification in Religious Studies is highly valued for careers in medicine, teaching, social work, publishing, journalism, nursing and the religious life. Banks, broadcasters, public services and the Law recognise the positive benefits of such a wide-reaching subject. Religious Education encourages skills of listening, understanding, communicating and the ability to form and express a personal opinion with analysis and synthesis. It gives an insight into human nature, how people relate to one another and helps students to develop concern and tolerance for others, and the world around them. As a result, it helps the student grow as a person and to develop a greater understanding of faith, the world they live in, and the ways in which they can contribute towards the common good.

AQA "Trilogy" Combined Science / GCSE Biology, GCSE Chemistry, GCSE Physics Specification: Trilogy (Combined Science) 8642, Biology 8461, Chemistry 8642, Physics 8463

Why study Science?

Students who do not choose science as one of their options will follow the Combined Science course, leading to the award of **two** GCSE grades. This course is still appropriate for students who wish to study Sciences at A-level. Students who wish to study Biology, Chemistry and Physics as separate subjects and gain **three** science GCSEs have the opportunity to do so. In order to do this, "Triple Science" **must** be taken as one of your options. Choosing the separate sciences gives students a much greater breadth of study in science and we recommend this option for any student with an interest in doing science at post-16 level. Due to the demanding nature of the courses, students wishing to take triple science must achieve a high standard of achievement at the end of year 9.



Course outline

Italics indicate the extra areas within each topic that are studied only by those students who take triple science as an option.

Biology

- Cell biology (*culturing microorganisms*)
- Principles of organisation
- Infection and response (*monoclonal antibodies; plant diseases*)
- Bioenergetics
- Homeostasis and response (*the eye; the brain; thermoregulation; plant hormones; osmoregulation*)
- Inheritance, variation and evolution (*types of reproduction; DNA structure; cloning; Darwinian evolution; Mendelian genetics*)
- Ecology (*decomposition; impact of environmental change; trophic levels; food production*)

Chemistry

- Atomic structure & the periodic table (*properties of transition metals*)
- Bonding, structure, and the properties of matter (*size and properties; nanoparticles*)
- Quantitative chemistry (*yield and atom economy; molar solutions; moles of gases*)
- Chemical changes (*titrations*)
- Energy changes (*chemical cells and fuel cells*)
- The rate and extent of chemical change
- Organic chemistry (*alkenes and alcohols; polymers*)
- Chemical analysis (*ion testing*)
- Chemistry of the atmosphere
- Using resources (*using materials; the Haber process*)

Physics

- Energy
- Electricity (*static electricity*)
- Particle model of matter (*pressure in gases*)
- Atomic structure (*radiation hazards; nuclear fission and fusion*)
- Forces (*moments, levers & gears; pressure in fluids*)
- Waves (*sound waves; waves for detection and exploration; lenses; light; black body radiation*)
- Magnetism and electromagnetism (*loudspeakers; induced potential; transformers; the National Grid*)
- Space physics

How will I be assessed and examined?

Assessment is all by terminal examination at the end of Y11. The exams include multiple choice, short answer and extended response questions. All students will have two exams in each science subject i.e. six in total. For combined science the papers are each 1hr 15 minutes long, for triple science they are 1hr 45 minutes.

The sciences are very useful general qualifications as they develop the skills of planning, evidence gathering, analysis and critical thinking. Because of this, as well as obvious careers and higher education courses such as medicine, engineering, pharmaceuticals, etc. the sciences are also regarded favourably for entry into other fields, such as law, economics and business.

Core PE

Key Stage 4

After the basic skills taught in Key Stage 3, the PE programme in Key Stage 4 allows students to choose a half termly pathway of a variety of activities. This choice allows students to select activities that they enjoy and hopefully encourages life-long participation in sport and physical activity. Core PE promotes positive mental health and wellbeing to all our learners.

Individual Sports/Activities

Badminton, Table Tennis, Trampolining, Athletics, Fitness.

Team Sports/Activities

Football, Rugby, Handball, Netball, Volleyball, Basketball, Cricket, Rounders.



Students will choose one pathway per half term but will also get the opportunity to use the fitness suite on a rotational basis. They will also be encouraged to take on roles such as leadership and officiating with a view to develop transferable life skills.

Those who excel in Physical Education will be encouraged to select either GCSE PE or the Level 2 Cambridge National Sport Studies or A Level PE.



Art and Design

AQA GCSE Art & Design Specification Code 8201 QAN 601/8088/2



Why study Art & Design?

Do you enjoy drawing, painting, photography, working in 3-D and experimenting with materials? Would you miss the unique opportunity that art provides to make a personal and imaginative response?

Course outline

GCSE Art and Design builds on the experience you have gained in art and introduces you to a wider range of techniques and materials. You will learn a range of drawing and painting techniques, mono and lino printing, photography and Adobe Photoshop skills. You can also choose to learn textile techniques such as silk painting or 3D skills such as 3D digital design, 3D printing and ceramics. The course looks at a wide range of artists and designers.

You can choose from a range of themes and techniques to develop your controlled assessment and demonstrate your skill. Homework in GCSE Art and Design is planned to allow you to research and support the development of your ideas in class. The course is also supplemented by terrific trips giving students the opportunity to explore locations locally, nationally and internationally such as Newcastle, London, Barcelona and New York City.

How will I be assessed and examined?

Component 1: Portfolio

The portfolio is 60% of your GCSE grade. You will have an opportunity to learn and improve skills before completing a sustained project and an experimental unit. Only your best work will be selected for assessment.

A portfolio and externally set units are marked internally and validated by a visiting exam board moderator.

Component 2: Externally Set Assignment (Exam)

Seven externally set themes/questions are given to you from the exam board in January. You will have approximately 3 months' preparation time in which to research your chosen theme and develop a final idea to produce over 10 hours in exam conditions. The exam is completed in the art department during manageable sessions over a few days. This accounts for 40% of your GCSE grade.

What are the career opportunities and progression routes?

After successfully completing the GCSE course, students can join an A Level course in Art and Design, Textiles, Photography, 3D Art and Employment and Graphic Design. This is usually followed by a foundation course of one year in a regional art college, or direct entry to a specialized degree, such as architecture, computer animation, interior and industrial design, fashion, photography and graphics.

Career Opportunities

Make an impact and shape your environment in the future by choosing one of the following careers: Graphic Designer, Packaging Designer, Photojournalist, Stylist, Advertising, Architect, Auctioneer, Fashion Designer, Video Editor, Film Director, Jewellery, Animator, Medical Illustrator, Children's Book Illustrator, Cartoonist, Interior Designer, Stage/Costume Designer, Fabric Designer.

OCR GCSE (9-1) Business Specification Code J204

Why study Business?

This subject introduces learners to the business world, empowering them to develop as commercially-minded and enterprising individuals. Students will have the opportunity to develop a wide range of skills, enabling them to use business information critically, to develop arguments, to make justified decisions and to prepare them for further study and career pathways. The focus of the subject is to introduce and nurture an enthusiasm for studying business in a range of contexts. Students will appreciate how businesses operate in a dynamic and competitive environment and develop an understanding of the interdependent nature of business functions from a local to a global perspective.



Course outline

The subject content enables learners to apply their knowledge and understanding to different business contexts, including businesses ranging from small enterprises to large multinationals and businesses operating in local, national and global contexts. Students are required to develop an understanding of how these contexts impact on business behaviour. Students will be expected to be familiar with current issues in business and develop an understanding of the dynamics of business activity. Students should investigate the real business world to develop an understanding of contemporary business opportunities and issues. The content is presented in seven clear and distinct topic areas:

- 1 - Business activity
- 2 - Marketing
- 3 - People
- 4 - Operations
- 5 - Finance
- 6 - External Influences on Business
- 7 - Interdependence

How will I be assessed and examined?

The subject content is assessed across two examination papers. Each exam is 90 minutes long. Paper 1 will test students on the units covered in Year 10 (Units 1-3). Paper 2 will test students on the units covered in Year 11 (Units 4-7). Some questions will be multiple choice, some will be extended writing to test your ability to explain why you made a particular decision.

What are the career opportunities and progression routes?

A GCSE Business Studies' course, in developing an overview of the business world, is appropriate for students wishing to enter one of the areas covered by the units. As it is a course that develops the skills of investigation, analysis, interpretation, communication and team work, as well as a knowledge of the world of work in general, it gives a platform for moving into many careers, not always associated with business studies.

Possible Progression Routes

A Level Business, A Level Economics, Modern Apprenticeship, NVQs in the workplace, BTEC Business Studies.

Child Development

Level 1/2 Cambridge Nationals Certificate in Child Development Specification Code J818 QAN 601/7537/0

This course is designed for those interested in how a child develops from conception to the age of 5. It looks at the development of the child, equipment and nutritional needs of children, planning activities, play, postnatal, needs of children, childhood illnesses, safety, antenatal care, and conception.



All students will **need** access to a child aged 6 months to five years to plan and carry out play activities with as part of a coursework unit.

The course is assessed by a combination of coursework and a 1 hour 15-minute examination. The coursework provides 50% and the exam provides the other 50% of the mark.

Course outline

Core units include:

- R019 Understand the Equipment and Nutritional Needs of Children from Birth to Five Years – (coursework completed in Year 10)
- R020 Understand Development of a Child from Birth to Five years – (coursework completed in Year 10)
- R018 Health and Well-being for Child Development – examination* lasting 1 hour and 15 minutes (which will be undertaken in Year 11)

How is the course assessed?

Assessment includes an externally assessed unit*; the remaining units are internally assessed and OCR moderated based on a credit system. At the end of the course students will be awarded a Pass, Merit, Distinction or Distinction* grade (4, 5/6, 7/8 or 9 respectively). This will be calculated from the credits achieved throughout the course.

What are the career opportunities and progression routes?

Students gaining this award will have access to a range of career and further education opportunities. They can continue to study the subject in the EMS Sixth Form as Health and Social Care, BTEC Level 3 National A level (single or double option).

These courses are aimed at students who are interested in professions in Early Years, Health Care, Social Work, Teaching, Nursery Working or Nursing. Some of the many possible careers include: Nursery Nurse, Playgroup worker, Child welfare, Primary and Nursery teaching, Nanny, Care Assistant, Social Worker, Health Visitor, Midwife & Therapists.

Computer Science

OCR GCSE Computer Science
Specification Code J277
QAN 601/8355/X

Why study Computer Science?

Computer Science has never been more important in our society than it is today and there is a huge shortfall in the number of people entering into careers in Computer Science compared to the massive number of opportunities available. This course will help you to develop a range of computational thinking skills that can be applied to any problem, encouraging you to decompose tasks into their component parts and go about solving each individually.



This subject is a very practical subject in which you'll be able to apply the knowledge and skills learned in the classroom to real-world problems. It's an intensely creative subject that involves invention and innovation at every stage and will challenge and stretch you like never before. You will develop a good understanding and application of the core concepts of Computer Science and analyse problems in computational terms, devising and creating solutions by designing, writing, testing and evaluating computer programs.

Critical thinking is a key component of this subject as is the ability to be resilient as there will be a range of challenges that will test and stretch you to your limits. If you love that kind of challenge, can persevere to see tasks through to their completion and want to stay ahead of the game with a qualification that is relevant to our ever-changing digital world putting you at the forefront of innovation then this course is for you.

Course Outline

Component 01: Computer Systems

Introduction to the central processing unit (CPU), computer memory and storage, data representation, wired and wireless networks, network topologies, system security and system software. You will also look at ethical, legal, cultural and environmental concerns associated with computer science.

Component 02: Computational Thinking, Algorithms and Programming

This unit allows you to apply knowledge and understanding gained in component 01 to develop skills and understanding in computational thinking including algorithms, programming techniques, producing robust programs, computational logic and translators.

Practical Programming

You will have the opportunity to undertake a programming task during the course which lets you develop your skills to design, write, test and refine programs using a high-level programming language.

How will I be assessed and examined?

Component 01 50% (External Exam) / **Component 02** 50% (External Exam)

What are the career opportunities and progression routes?

This course provides the ideal platform for progression by studying Computer Science at A Level or following a more vocational route with a Computing apprenticeship. There are hundreds of opportunities available in this field including machine learning, system analyst, technician, network admin, web author, UX designer, database admin, game designer, software developer, VFX artist, data security, artificial intelligence, robotics, engineer, data security, app development and cyber security to name a few but that list is ever growing with new roles being created each day.

Creative iMedia

OCR Cambridge National Creative iMedia
Specification Code J834
QAN 603/7090/7

Why study Creative iMedia?

A qualification in Creative iMedia will both inspire and equip you with the confidence to use skills that are relevant to the ever changing and constantly growing digital media sector. You'll learn to design, plan, create and evaluate digital media products to meet a given client brief and look at the wider issues surrounding the industry.



Creative iMedia is an extremely practical subject in which you'll gain experience of using industry standard software to produce a range of digital media products developing digital identities for clients, planning and creating original graphics and other products. This course will encourage you to think about situations and what is needed to be successful, explore different options of solving a problem, generate ideas and select tools and techniques to solve a problem. You'll also investigate appropriate use of media to convey meaning and how planning techniques can help you to complete tasks in an organised way to help you meet set deadlines.

Course Outline

R093: Creative iMedia in the media industry

This unit will teach you about the sectors, products and job roles that form the media industry. You will learn the legal and ethical issues and processes used to plan and create digital media products. You'll also learn how media codes are used to convey meaning, create impact and engage audiences and learn how to choose the most appropriate format and properties for different media products.

R094: Visual identity and digital graphics

Learn how to develop visual identities for clients based on their client brief. You'll be able to apply the concepts of graphic design to create original digital graphics which incorporate the visual identity of the client to engage the intended target audience

Additional Coursework Unit

The course consists of five additional units of which one will be selected from the following list; comic book design, animation, interactive digital media, videography and digital games. The choice of unit will be decided when the course begins by surveying the students in the group to decide which option is most popular.

How will I be assessed and examined?

External Examination R093 Creative iMedia in the media industry
Centre Assessed Tasks R094 Visual identity and digital graphics
Additional coursework unit

What are the career opportunities and progression routes?

This course provides the perfect opportunity for progression by studying Level 3 Cambridge Technical in Digital Media or following a fully vocational route with an apprenticeship in digital media. There are a whole multitude of careers you can access with this qualification including graphic designer, app developer, storyboard artist, web developer, videographer, digital media marketing and many other roles across print, audio and audio-visual media.

Geography

**GCSE AQA
Geography
Specification
Code 8035 QAN
601/8410/3**

Why study geography?

Geography is a fairly unique subject because it looks at both the physical structure of the planet and the social structure (i.e. how we affect our environment and how it affects us). There has never been a better or more important time to study geography. With the growing importance of issues such as climate change, migration, environmental degradation, and inequalities, geography is one of the most relevant courses you could choose to study. Learning through geography helps us all to be more socially and environmentally sensitive, better informed, and more responsible as citizens and employees.



Course outline

Students will study the AQA GCSE syllabus and they will sit 3 exams, two of 1 hour 30 minutes and one of 1 hour. The link to the new specification can be found at:

<http://www.aqa.org.uk/subjects/geography/gcse/geography-8035>

Paper 1: Living with the Physical Environment. Students choose a range of questions, some which are data response and multiple choice and others which are far more challenging and require longer, essay style answers. This assessment style is the same for all three papers. The areas of study in paper 1 are hazards, physical landscapes of the UK, tropical rainforests and deserts.

Paper 2: Challenges in the Human Environment. The areas of study are urban issues and challenges in London and Lagos, the changing economic world, the challenge of resource management focusing on food issues.

Paper 3: Geographical Applications. It is a mixture of pre-release material on a relevant geographical issue and fieldwork skills. Students will spend 1 day doing fieldwork in Seaham, which demonstrates the interaction between human and physical geography and they are examined on the results and processes.

How will I be assessed and examined?

There are 3 written papers:

- Paper 1 1 hour 30 minutes/ 35%
- Paper 2 1 hour 30 minutes/ 35%
- Paper 3 1 hour long/ 30%

Each paper has a mix of short multiple-choice questions as longer extended answers.

What are the career opportunities and progression routes?

Students can follow a huge range of careers having studied geography; these range from G.I.S (Geographic Information Systems) operator, catastrophic modeller, emergency planner, military, urban planner, environmental lawyer, environment agency, meteorologist, geologist, or volcanologist. It also supports students who are more interested in science-based subjects as the discipline has both arts-based skills of essay writing and numeracy and statistical skills which work well with STEM subjects.

Health and Social Care

Pearson BTEC Level 1/Level 2 Tech Award in Health and Social Care QAN 603/0395/5

The course is a practical and work-related course. You study by completing assignments that are based on realistic workplace situations and activities. The course gives students the opportunity to gain a broad understanding and knowledge of the health and social care sector. You will be given the responsibility to work independently and the opportunity to gain skills in teamwork, leadership, problem solving and communication. You will learn the essential skills needed to support people with a wide range of needs, from babies and toddlers to adults and the elderly. This course is designed for those who are interested in a career in any of the health professions and provides a suitable foundation for learners for progression onto further education. The BTEC Level 2 Tech Award is equivalent to one GCSE.



Course outline

Core units include:

- Component 1: Human Lifespan Development: students will develop the knowledge that by looking at how, in real situations, human development is affected by different factors and that people deal differently with life events – Internal coursework.
- Component 2: Health and Social Care Services and Values: students study and practically explore health and social care services and how they meet the needs of real service users. They also develop skills in applying care values. As part of the course requirements the student will experience one week's work experience in a vocational environment. This will allow them to demonstrate interpersonal skills and be able to reflect on their own performance in that setting – Internal coursework.
- Component 3: Health and Wellbeing: students will explore how factors can affect health and wellbeing positively or negatively. This links to, and extends, knowledge and understanding of life events covered in Component 1, they will learn about the physiological and lifestyle indicators and how to design a health and wellbeing improvement plan in preparation for their external examination.

How is the course assessed?

Assessment includes an externally assessed unit; the remaining units are internally assessed and based on a credit system. At the end of the course students will be awarded a Pass, Merit, Distinction or Distinction* grade (4, 5/6, 7/8 or 9 respectively). This will be calculated from the credits achieved throughout the course.

What are the career opportunities and progression routes?

Students gaining this award will have access to a range of careers and further education opportunities. They can continue to study the subject at EMS Sixth Form as Health and Social Care, BTEC Level 3 National A level (single or double option). These courses are aimed at students who are interested in professions in Health Care, Social Work, Teaching, Nursery Working or Nursing, Social Worker, Health Visitor and Midwife & Therapists.

This course is an excellent starting point for all jobs in the NHS or care services.

Edexcel History GCSE (9-1)
Specification Code 1H10
QAN 601/8092/4

Why study history?

History at English Martyrs is a fantastic opportunity for students to study about the past in order to understand the present whilst preparing for the future. We study the Edexcel GCSE History qualification which offers an engaging and flexible course that students enjoy. Studying History helps with vital skills, such as: Literacy and Communication Skills, Questioning & Listening Skills, Enquiry & Empathy, Co-operation and Teamwork, Sharing Opinions, Retaining Information, and understanding the world around us.



Course outline

Students will study five areas:

Paper Title

Paper 1 (30%) 1h 15	Thematic study: – Crime and Punishment in Britain, c.1000-present (20%) <i>with</i> Historic environment: Whitechapel, c 1870-c.1900: crime, policing and the inner city (10%) British
Paper 2 (40%) 1h 45	British depth study: (20%) Early Elizabethan England, 1558–88 British Period study: 20%) Superpower Relations and the Cold War, 1941-91 non-British
Paper 3 (30%) 1h 20	Modern depth study: Weimar and Nazi Germany, 1918-39 (30%) non-British

How will I be assessed and examined?

Students will be assessed over two years on all components of the key topics for each exam paper in lessons so that they are fully prepared for the final exams.

Paper 1 is a written exam on Crime and Punishment (1 hour 15 mins, 52 marks, worth 30%)

Paper 2 is a written exam on both the Cold War and Early Elizabethan England in the same Paper (1 hour 45 mins, 32 marks for each section, worth 40%)

Paper 3 is a written exam (1 hour 20 mins, 52 marks, worth 30%)

What are the career opportunities and progression routes?

History is a highly respected academic subject. Employers and Universities recognise GCSE History as developing transferrable skills like analysis, independence, explanation and resilience – skills which are relevant to all professions and further education. The study of History has helped many students to enter a whole range of jobs including teaching, museum work, conservation, marketing, publishing, law, the police force, social work, journalism and the civil service.

Music

GCSE Edexcel Music
Specification Code 1MU0
QAN 601/8204/0

Why study music?

Music is a demanding yet exciting course for students who enjoy listening, have an interest for a wide range of musical genres and styles, including Classical and Popular music and enjoy performing on their musical instrument or voice. You will develop confidence in a variety of different disciplines whilst learning new skills using compositional software used by professional musicians.



Course outline

We will be following the Edexcel specification. The course content will include:

- Western classic tradition 1700-1820
- Musical elements
- Musical language
- Music for Stage and Screen

Students will use Sibelius software to create their compositions and will have the opportunity to record their composition work as well as their performances.

How will I be assessed and examined?

Performing 30% Assessment - Composing 30% Assessment - Appraising 40% Written

Examination Performing

Performing is a compulsory part of the course and as such you must be able to sing or play a musical instrument to succeed.

Students will submit solo and ensemble performance work.

Composing

Students will develop their compositional skills and techniques, before completing two compositions in contrasting styles.

Appraising

This part of the course is taken as a formal written exam. Students will research and analyse set musical works, as well as developing their skills in analysing unfamiliar music.

What are the career opportunities and progression routes?

Many students wish to build on the skills developed during their GCSE Music studies by studying A Level Music at The English Martyrs School and Sixth Form College. This course encourages active musicianship and leadership within The English Martyrs community and participation in musical activities both in and out of Sixth Form.

Career Opportunities

- Musician
- Composer / Arranger
- Teacher / Lecturer
- Armed Forces Musician
- Music Therapist
- Sound Technician
- Music Publishing

Performing Arts

Pearson BTEC Level 1/Level 2 Tech Award in Performing Arts

Specification Code YPR74 QAN
603/0406/6

Why study Performing Arts?

Performing arts offers the opportunity to express your talent and determination as part of a varied, skilled and passionate group of performers. Whether you choose to sing, dance, act or to be part of technical team, the confidence and skills gained through completion of this course are invaluable to any given career path.



You will develop confidence, become articulate in front of others and learn how to organise and develop complex projects as part of a team, as well as gaining the high standard of skills required if you wish to pursue a career in a Performing Arts-related field.

Course outline

This is a practical, vocational course, suitable for students with a range of previous experience, including those who have none at all, but are enthusiastic about trying something new. The course consists of three units of study spread across the two years, developing your practical and written skills to a high standard. Lessons focus primarily on musical theatre skills and many students complete all assessments as an actor, singer and dancer. You can also choose to be assessed on technical, backstage or design skills in some units. Units studied include:

- Exploring the Performing Arts
- Developing Skills and Techniques in the Performing Arts
- Performing to a Brief

How will I be assessed and examined?

The qualification consists of three components that will give you the opportunity to develop broad knowledge and understanding of the performing arts industry and specialist skills and techniques in acting, dance and musical theatre at Levels 1 and 2.

Components 1 and 2 are assessed through internal assessment, which consists of regular workshops and reflective, evaluative written work. Component 3: Performing to a Brief will require you to apply performance skills and techniques in response to a brief and stimulus, developing a group workshop performance for a selected

What are the career opportunities and progression routes?

Many students wish to build on the skills developed during their performing arts BTEC by studying the Cambridge Technical Level 3 Extended Certificate qualification in performing arts at The English Martyrs Catholic School and Sixth Form College.

This vocational course is designed to give you the skills to follow a variety of career pathways. As well as leading to Performing Arts careers, studying this subject opens up a range of other possibilities in jobs that involve working with people and it is one of the most popular subjects for students interested in studying Law, English and other subjects related to the arts.

Photography

**AQA GCSE Photography
Specification
Code 8206
QAN 601/8088/2**



Why study Photography?

GCSE Photography is a fantastic opportunity for you to explore your creative talents through the use of new media such as digital SLR cameras, digital manipulation software (Adobe Creative Cloud), iPads, a purpose-built Photography department comprising of individual work areas, a professional portrait studio and a photographic darkroom.

Course outline

When utilising such specialist photographic facilities, you will produce a personal portfolio of work covering a variety of topics and photographic styles. You will also be encouraged to think artistically about your photographic work and you will be expected to experiment with traditional art materials to produce innovative and unique pieces of photographic artwork.

If you would like to challenge yourselves artistically and creatively, experimenting with a variety of photographic media then choose GCSE Photography. The subject will provide you with a foundation of skills which will be invaluable if you seek to pursue a career in the creative industries. The course is also supplemented by terrific trips giving students the opportunity to explore locations locally, nationally and internationally such as Newcastle, London, Barcelona and New York City.

How will I be assessed and examined?

Component 1: Portfolio

The portfolio is 60% of your GCSE grade. You will have an opportunity to learn and improve skills before completing a sustained project and an experimental unit. Only your best work will be selected for assessment. A portfolio and externally set units are marked internally and validated by a visiting exam board moderator.

Component 2: Externally Set Assignment (Exam)

Seven externally set themes/questions are given to you from the exam board in January. You will have approximately 3 months' preparation time in which to research your chosen theme and develop a final idea to produce over 10 hours in exam conditions. The exam is completed in the art department during manageable sessions over a few days. This accounts for 40% of your GCSE grade.

What are the career opportunities and progression routes?

After successfully completing the GCSE Photograph, students can join an A Level course in Art and Design, Textiles, Photography, 3D Art and Employment and Graphic Design. This is usually followed by a foundation course of one year in a regional art college, or direct entry to a specialized degree, such as architecture, computer animation, interior and industrial design, fashion, photography and graphics.

Career Opportunities

Make an impact and shape your environment in the future by choosing one of the following careers: Graphic Designer, Packaging Designer, Photojournalist, Stylist, Advertising, Architect, Fashion Designer, Video Editor, Film Director, Jewellery, Animator, Medical Illustrator, Interior Designer, Stage/Costume Designer, Fabric Designer.

Physical Education

**AQA GCSE Physical
Education Specification
Code 8582
QAN Code 601/8279/9**



Why study Physical Education?

You'll gain many valuable skills from studying physical education that will help you in other GCSE and A-level subjects as well as your future career. Some of the skills that you will develop include: Communications skills - Through playing team sports and problem solving with others, you'll develop clear communication skills that will help you in the workplace. Every employer looks for candidates who are able to communicate well verbally and in writing. Social skills - Physical education is a very social subject and can involve a lot of group work. You'll learn how to communicate and socialise with people in an effective way. When you start working, you'll encounter people from a range of different backgrounds, each with different personalities. Studying PE will help you learn how to best communicate with people in a team in order to produce the best results. Analysis and evaluation - At GCSE, PE involves analysing your own and others' performance while looking for ways it could be improved. This is a particularly useful skill to have in your career as you'll often have to critique your own work and identify areas for improvement. If you work in management, you'll also benefit from the soft skills that PE teaches and will learn how to deliver messages clearly and effectively. Physical fitness - As a PE student, you'll also benefit from being physically fit! Not only will this help you in the physical side of the subject itself, but it'll also improve your general well-being. Doing regular exercise is proven to relieve stress and promote good mental health.

Course outline

The theoretical content will include applied anatomy and physiology, movement analysis, physical training, use of data, sports psychology, socio-cultural influences and health, fitness and well-being. There is also a practical element to the course in three different physical activities.

How will I be assessed and examined?

This qualification is linear. Linear means that students will sit all their exams and submit all their non-exam assessment at the end of the course. There are two written exams (each 1 hour 15 minutes), consisting of a mixture of multiple choice/objective test questions, short answer questions and extended answer questions.

Paper 1: The human body and movement in physical activity and sport (78 marks – 30% GCSE).

Paper 2: Socio-cultural influences and well-being in physical activity and sport (78 marks – 30% GCSE).

There is a non-exam assessment based on practical performance in physical activity and sport. This is assessed as a practical performance in three different physical activities in the role of player/performer (one in a team activity, one in an individual activity and a third in either a team or in an individual activity). For each of their three activities, students will be assessed in skills in progressive drills (10 marks per activity) and in the full context (15 marks per activity). There is also an analysis and evaluation of performance to bring about improvement in one activity. Students will be assessed on their analysis (15 marks) and evaluation (10 marks) of performance to bring about improvement in one activity. These are assessed by teachers and moderated by AQA (100 marks - 40% of GCSE).

What are the career opportunities and progression routes?

GCSE PE is an accepted and recognised qualification for those intending to pursue a career in Leisure Management, Coaching, Teaching, Fitness Training and the Armed Forces. Due to the high level of Biology and Physiology in the content of the course, it can be useful in careers such as Medicine, Nursing, Care of the Elderly and Physiotherapy.

GCSE PE can provide a sound platform for further study on the Sport and PE Course in the English Martyrs Sixth Form or perhaps a degree in Sport or PE at university.

Cambridge National Sport Studies Level 1/2
Specification Code J829
QAN 603/7107/9

Why study Sport Studies?

The Cambridge National in Sport Studies enables students to develop and apply knowledge of sports-related activities, with a particular focus on officiating. They explore contemporary issues in sport, different ways of being involved in the sports industry, including sports leadership, and the impact of sport on wider society.

Course outline

You will study two mandatory units, covering the underpinning knowledge and skills required for the sports sector:

- **Contemporary issues in sport**
- **Performance and leadership in sports activities**

You will build on the knowledge gained in the mandatory units by covering an optional unit, covering the area of:

- Sport and the media

How will I be assessed and examined?

You will carry out tasks/assignments throughout the course. Your teacher will mark two units, and so you will receive feedback as to how you are getting on. The assessment for unit R184: Contemporary issues in sport is a written examination which is marked externally.

How does the course compare to others?

The Cambridge National in Sport Studies Level 2 will be equivalent to a GCSE qualification.



What are the career opportunities and progression routes?

This qualification will introduce young people to a wide variety of career opportunities within sport.

The course counts equally alongside GCSEs when applying to do further study in either general or vocational qualifications. With further training or study, students can follow careers in: Teaching; Sports & Exercise Coach; Sports & Exercise Instructor; Personal Trainer; Armed Services; Sports Administration; Physiotherapy; Lifeguard and Swimming Attendant; Sports Journalist and Photographer; Sport Centre Attendant; Outdoor Education Instructor; Coastguard; Firefighter; Osteopath; Riding Instructor; Professional Sportsman/Woman.

Technology - Engineering

WJEC Level 1/2 Award in Engineering

Specification Code 5799QA

QAN 603/7019/1

Why study Engineering?

Do you ever look around your home and think of handy products that could improve people's lives or get inspired by the amazing feats of engineering all around you? Are you creative, and want to start building the skills you need for a successful career in the industry? If so, it's time to uncover your potential – find out more about this exciting qualification today!

Course outline

This qualification is made up of 3 units:

Unit 1: Manufacturing Engineering Products

In this unit you learn to interpret different types of engineering information in order to plan how to manufacture engineering products. You develop knowledge, understanding and skills in using a range of engineering tools and equipment in order to manufacture and test a final product.

Unit 2: Designing Engineering Products

Unit 2 allows you to explore how an engineered product is adapted and improved over time. It offers you the opportunity to apply your knowledge and understanding to adapt an existing component, element or part of the product that you will have manufactured for Unit 1.

Unit 3: Solving Engineering Problems

This unit introduces you to a range of considerations that impact on engineering design and how modern engineering has had an impact on modern day life at home, work and in society in general.

How will I be assessed and examined?

You will be assessed through a mixture of exams and project work. Unit 1 will involve producing a manufacturing product, which will be worth 40% of the qualification. This can range from a basic hand tool to complex machinery. The product will need to be developed over 20 hours.

Unit 2 will also be assessed through project work and will be worth 20% of the qualification. Here you will apply your problem-solving skills to answer a brief and produce a solution. You will produce your solution over 10 hours.

Unit 3 will involve a single exam, which is worth 40% of your qualification. The exam will last 1 hour and 30 minutes. The exam will be made up of multiple-choice questions, and short and extended answers.



What are the career opportunities and progression routes?

Post-16	A-Level Product Design, C&G Level 3 Engineering (Fabrication and Welding), Engineering (Diploma and Extended Diploma), BTEC Level 3 Engineering Design and Draughting, C&G Level 3 Engineering Technology (Mechanical Maintenance), C&G Level 3 Engineering (Electrical).
Possible careers	Mechanical Engineer, Product Designer, Architect, Surveyor, Civil Engineer, Automotive Designer – just to name a few!
Degree	Product Design, Industrial Design, Architecture, Civil Engineering or Automotive Engineering.

Technology - Product Design

**GCSE Design and
Technology Specification
Code 8552
QAN 603/0984/2**

Why study Design Technology (Product Design)?

Are you creative and imaginative? Do you enjoy exploring ideas and looking at things in different ways? Do you enjoy making? If so, you should consider Design Technology (Product Design). You will enjoy developing your understanding of the visual world, learning practical skills and responding to ideas and issues in ways that are personal to you.



Course outline

Studying Design and Technology will enable you to develop a wide range of transferable skills for further education, work and life. These will include:

- Creative and innovative thinking.
- Use of imagination and experimentation.
- Ability to critique and refine your own ideas.
- Knowledge and understanding of all design and technological activity and influences.
- Decision making skills.
- Practical skills.
- Communication skills

How will I be assessed and examined?

There is one 2 hour written examination (Paper 1) worth 50% of the qualification; the remaining 50% is a Design and Make task (NEA) which will be marked by teachers and moderated by the exam board.

Paper 1

Paper 1 is a mix of short answer, structured and extended writing questions assessing your knowledge and understanding of: technical principles designing and making principles along with your ability to: analyse and evaluate design decisions and wider issues in design and technology.

NEA (Non-Exam Assessment)

The NEA is a sustained design and make task, based on a contextual challenge set by the exam board, assessing your ability to: identify, investigate and outline design possibilities design and make prototypes analyse and evaluate design decisions and wider issues in design and technology.

What are the career opportunities and progression routes?

Post-16	A-Level Product Design, C&G Level 3 Engineering (Fabrication and Welding), Engineering (Diploma and Extended Diploma), BTEC Level 3 Engineering Design and Draughting, C&G Level 3 Engineering Technology (Mechanical Maintenance), C&G Level 3 Engineering (Electrical).
Degree	Product Design, Industrial Design, Design Marketing, Graphic Design, Architecture, Interior Design or Jewellery Design.
Possible Careers	Product Designer, Furniture Designer, Jewellery Designer, Graphic Designer or Architect – just to name a few!

Technology – Fashion and Textiles

**GCSE Design and
Technology Specification
Code 8552 QAN
603/0984/2**

Why study Design and Technology?

- You enjoy being creative
- You have an imaginative way of solving problems
- You are good at visualising 3D concepts
- You are skilled in practical work
- You enjoy using machinery and tools



Course outline

The course will develop a wide range of practical skills incorporating surface embellishment, joining, and finishing, combining materials, and colouring fabrics.

Be innovative! Be imaginative! Be original! Fashion and Textiles is a course which students will find stimulating and rewarding. The emphasis is on a practical approach, developing new skills of pattern cutting, garment construction and surface embellishment. The next generation of designers need to focus on a sustainable design and one of the key elements of the course allows for students to consider how future designs will impact on the world in which we live.

On this course you will:

- Solve problems in a creative way using a variety of materials and techniques
- Design and make prototypes that meets set design briefs
- Use a combination of embellishment and construction techniques to develop sustainable products

How will I be assessed and examined?

Written exam: 2 hours

50%

Non-exam assessment (NEA) 50% approximately 30–35 hours

Themes to be released annually by AQA on 1 June in the year prior to the submission of the NEA. Students will produce a prototype and a folder of evidence.

Work will be marked by teachers and moderated by AQA.

What are the career opportunities and progression routes?

Fashion and Textiles is a growing industry as our need for fashion products and interiors increases. Potential careers include fashion designer, buyer, pattern maker, machinist, technician, clothing technologist, quality control, purchaser, marketing, teacher, journalist etc. Many of our past students who have studied Fashion and Textiles have gone on to study at A level and go on to further education at Foundation and Degree level at universities.

Technology – Hospitality and Catering

WJEC Level 1/2 Hospitality and Catering

Specification Code 5569

QAN code 603/7022/1

Why study hospitality and catering?

Being able to plan, prepare and present food is an essential skill within the hospitality and catering industry. This course equips you with theoretical knowledge about the industry as well as enabling you to develop practical skills in planning, preparing and cooking a variety of dishes. You'll master culinary skills and apply appropriate knowledge of food principles when preparing meals and making food choices.

Course outline

You will develop a wide range of food preparation and cooking skills during the course and present nutritional dishes to meet specific client's needs. Alongside practical lessons you will learn about different types of providers, legislation, food safety and the roles and responsibilities within the sector. Furthermore, this course contributes to the development of an array of transferrable skills from problem solving and communication to organisation and time management.

How will I be assessed and examined?

The qualification is internally and externally assessed. At the end of the course students will be awarded a Pass, Merit, Distinction or Distinction* grade (4,5/6,7/8 or 9 respectively).

Unit 1: Written paper (externally assessed) 40%

Unit 2: Non-examination assessment (internally assessed) 60%

Unit 2 task: You will work through a scenario provided by the exam board. You will propose 4 nutritious dishes that you think could be served in the catering outlet. You will need to prepare cook and serve 2 dishes with accompaniments during a set practical session.



What are the career opportunities and progression routes?

According to the British Hospitality Association, hospitality and catering is Britain's fourth largest industry and accounts for around 10% of the total workforce. Since 2010, over 25% of all new jobs have been within the hospitality and catering sector with the majority of new roles falling within the 18-24 age groups. After completing the WJEC Vocational Award in Hospitality and Catering you may be interested in progressing to other qualifications relevant to working in the sector or pursuing an apprenticeship in the field.

Foundation Learning & Improtech

Course Outline

The Foundation Learning Pathway is designed to support your progress through school and beyond. In KS4, you will access the Asdan 'Personal Development Programme', starting at Bronze level, with a view to progressing to Silver and Gold. The award provides a program of study, tailored to students who may have additional barriers to learning. You are able to explore learning through various resources made available to you, as required, by targeted challenges. The Personal Development Programme will structure and reward the different activities you complete, in and out of school. It will provide opportunities for you to develop personal, social, and work-related skills.

The activities within the course provide excellent opportunities to develop the following core skills:

- Ability to learn - this skill manages personal learning and development. It is about planning and working towards targets to improve performance and review progress.
- Teamwork - This skill is about working with others when planning and carrying out activities to achieve shared objectives.
- Problem Solving - This skill is about recognising problems and doing something about them. It is about using different methods to find a solution and checking to see if they work.
- IT Skills – This skill is about being able to make the best of computers and other items such as: printers, scanners, and cameras. Being familiar with how to use this equipment is vitally important in the workplace and at home.
- Literacy – This skill is about how you talk to people and also the ways you find out information and let other people know about your views and opinions. It also includes aspects of reading and writing.
- Numeracy – This skill is about the ability to use numbers. For example, if you have measured or calculated something, you will have used numeracy skills. Being able to use numbers is a skill highly valued by employers.

Each challenge is internally assessed through set criteria from ASDAN and a selection of files are externally moderated by ASDAN.

The Foundation Learning option enables us, as a school, to continue to provide a nurturing environment for you. Our staff specialise in helping you to have an enjoyable experience, whilst gaining vital life skills. This includes improving your independence, confidence, communication, social skills, all which play a significant part in preparing for further education and employment. Weekly support study is also offered through individual subject planned intervention.

What are the career opportunities and progression routes?

The Foundation Learning Pathway will support students in the next phase of their journey to further education and employment. They will have the opportunity to progress on to a course at a higher level, of their preferred vocational subjects, apprenticeships, or employment in the industry of their choice, with confidence.

Improtech

Improtech students should choose Improtech as one of their options. This means that a block of time will be allocated to them during the school day, and prevent a loss of learning time from other subjects and their studies.

Curriculum

Students who take part in the improtech scheme will achieve 9 GCSEs

DATES FOR YOUR DIARY

Options Evening

Thursday 3rd March 2022

3:30 – 6:00 pm

Online options form to be returned
by **Wednesday 16th March 2022**

Email questions or queries to
Ems-options@ems.bhcet.org.uk