

## WHY OUTREACH MATTERS?

We understand that the success of young people relies on how well they are supported to manage and navigate the changes in their lives.

We also recognise that transition from primary to secondary school is a huge change and that positive experiences at this stage can have a profound effect on young people's outcomes in adult life.

This is why it matters, and this is why we are prepared to invest heavily in our young people to help them through this process.

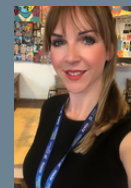


## THE TEAM:



### MRS L DUNN

Mrs Dunn is our Transition Lead Teacher and has been responsible for developing successful level 1 experiences for over 6 years.



### MR T COX

Mr Cook is our Specialist Transition Practitioner and is responsible developing new teaching and learning processes for our new pupils new and existing pupils.



### MR G WILSON

Mr Wilson is the Trust Transition Lead and is responsible for developing and supporting our Transition offer across the trust.



### MISS R MOSS

Miss Moss is our Schools Partnership Lead and is responsible for delivering our amazing outreach offer across our feeder primary schools.



**CONTACT US:** [transition@kingsway.stockport.sch.uk](mailto:transition@kingsway.stockport.sch.uk)

## Primary Outreach Programme

# POP 2024/25



THE  
KINGSWAY  
SCHOOL

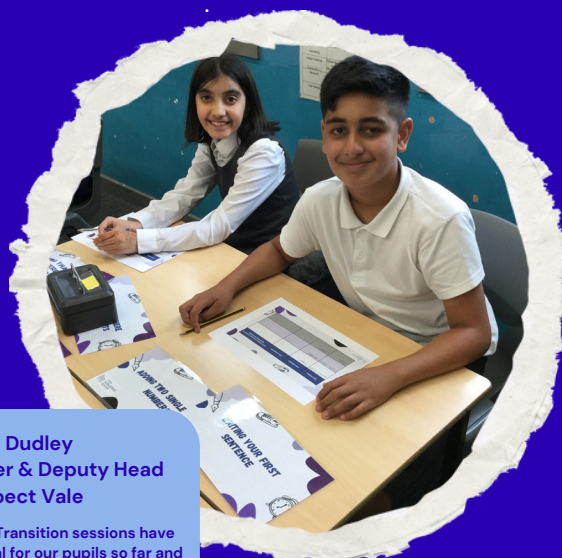


EDUCATION  
LEARNING  
TRUST  
COLLABORATE - EMPOWER - ACHIEVE

## MAINTAINING MOMENTUM TO DRIVE SUCCESS

# ABOUT POP

Our Primary Outreach Programme (POP) is hugely important to us and it sits at the very center of our offer. It is a fantastic opportunity for us to connect with future pupils, parents and colleagues across our community and build links that help our young people.



**Will Dudley**  
Year 6 Teacher & Deputy Head  
Prospect Vale

The Kingsway POP Transition sessions have been really beneficial for our pupils so far and have added carefully thought through planning and structure to transition in general. We have not had this level of planning and structure in place before where communication between ourselves and forwarding high schools has been this strong so we are very pleased with the offer and support our pupils are receiving in order to be ready for life at The Kingsway School.

The sessions have been very clear in intent and purpose and have been designed to address and meet the needs of our pupils moving forward. We would be keen to see this continue and grow in the future.

In addition, whilst many of our pupils do go to The Kingsway, the others who will not attend The Kingsway School have been able to access the sessions in equal measure as the skills and learning have applied to them too.

We have also enjoyed the opportunities provided by Lisa Dunn in arts, music, dance and drama which allowed all to experience a range of activities that The Kingsway School offer.

The programme, which is unique to Kingsway, has been developed by primary and secondary colleagues. It is designed to support pupils during transition and beyond by giving them access to targeted sessions both at Kingsway and in their own primary school.

# HOW IT WORKS

We know that all the pupils, families and primary schools in our community are amazing, but also very different. This is why we have designed our programme with a great deal of flexibility.



Change is inevitable, it's how we approach and navigate change that helps us find success.

POP runs on three levels and a primary school, pupils and parents can access the programme at a level that suits them.

## START HERE

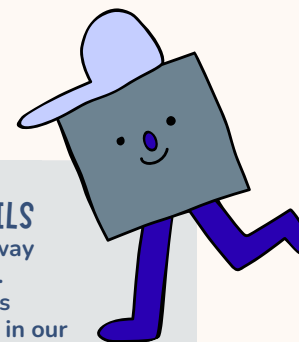
To learn more about POP

### POP LEVEL 1 :

#### 'INREACH' EXPERIENCES AT KINGSWAY

### POP LEVEL 1 : THE DETAILS

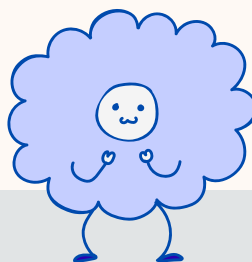
Pupil experiences at Kingsway throughout the school year. These involve whole classes being invited to spend time in our amazing facilities with our amazing staff.



Each child faces different transition challenges.



### Starting Secondary



### POP LEVEL 3: THE DETAILS

A small number of our young people, who face different challenges with transition, will be able to access a bespoke plan which will be developed alongside our specialist team.

### POP LEVEL 3: OUR BESPOKE PUPIL EXPERIENCE

### POP LEVEL 2:

#### OUTREACH EXPERIENCES IN PRIMARY SCHOOL

### POP LEVEL 2: THE DETAILS

Primary schools (and very soon parents) can choose from our range of experiences that we can bring to our feeder primary schools. These will be delivered over 18 weeks of the year and be facilitated by fully trained specialist staff and partners.