

CLIMATE ACTION PLAN



**THE LANES PRIMARY
- CATOR LANE SITE**



The Lanes
PRIMARY SCHOOL





CLIMATE ACTION PLAN



At The Lanes Primary - Cator Lane Site, we believe that small actions can lead to big changes, and we're excited to take steps toward a greener, more sustainable future. Our Climate Action Plan is all about creating a positive impact on the environment while inspiring our students, staff, and families to work together for a cleaner, healthier world.

From reducing waste to saving energy, we are committed to making eco-friendly choices that will benefit not only our school but the community around us. By embracing these efforts, we hope to encourage everyone at The Lanes Primary - Cator Lane Site to become climate champions and help build a brighter, more sustainable tomorrow.

SUMMARY

Not started: 21 items

In progress: 3 items

Completed: 5 items





Section

DECARBONISATION

CARRY OUT A BUILDING ENERGY AUDIT

Conducting a building energy audit helps schools pinpoint areas of energy waste, from heating inefficiencies to unnecessary lighting. Schools can use professional energy assessors or pupil-led monitoring programs to analyse energy usage and recommend improvements. Findings can inform decisions on insulation, lighting upgrades, and behaviour-based energy-saving strategies.

NOT STARTED

IMPROVE INSULATION IN SCHOOL BUILDINGS

Proper insulation helps maintain a stable indoor temperature, reducing the need for heating in winter and cooling in summer. By improving insulation in walls, roofs, and windows, schools can lower energy bills and create a more comfortable learning environment. Over time, these upgrades contribute to significant emissions reductions and cost savings.

NOT STARTED





Section

DECARBONISATION

RUN A SWITCH OFF CAMPAIGN

A switch-off campaign raises awareness about energy consumption and encourages simple behavioural changes to reduce waste. Schools can run competitions, put up reminder posters, and conduct audits to track energy savings. Engaging pupils through classroom discussions and real-time energy monitoring can make energy efficiency a long-term habit.

NOT STARTED

DELIVER SOME LESSONS OUTSIDE

Outdoor lessons provide pupils with fresh air and a change of scenery while reducing reliance on indoor lighting and heating. Whether it's reading in a shaded area, conducting science experiments outside, or using school gardens for hands-on learning, outdoor education fosters engagement and sustainability awareness.

Started: 12th Sep 2025

IN PROGRESS



Section

DECARBONISATION

INSTALL LED LIGHTING

LED lighting is a cost-effective and energy-efficient alternative to traditional incandescent and fluorescent bulbs. By switching to LED lighting, schools can significantly reduce electricity consumption and maintenance costs while lowering their carbon footprint. LED bulbs also generate less heat, improving classroom comfort and reducing the need for air conditioning.

Started: 4th Sep 2025

Completed: 4th Sep 2025

COMPLETED



Section

ADAPTATION & RESILIENCE

AUDIT AND REDUCE SINGLE-USE PLASTICS

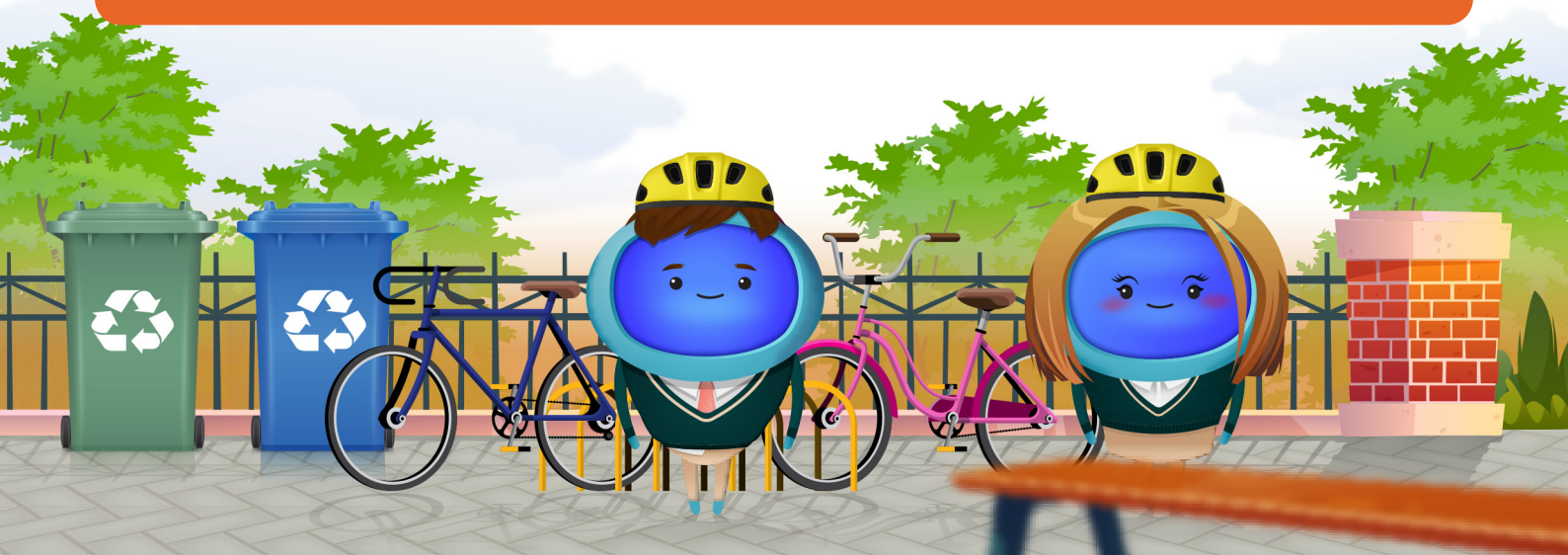
Schools can conduct an audit of their plastic use, identifying areas where single-use plastics can be eliminated or replaced with sustainable alternatives. This includes plastic cutlery, straws, and packaging materials. Encouraging the use of reusable water bottles and lunch containers can also contribute to waste reduction.

NOT STARTED

CREATE A HEATWAVE HEALTH AND SAFETY ASSESSMENT

As heatwaves become more common due to climate change, schools must ensure the wellbeing of pupils and staff during extreme temperatures. A heatwave health and safety assessment should include installing shaded seating areas, increasing hydration points, improving ventilation, and adjusting schedules during hot weather. Proactive planning helps prevent heat-related illnesses while fostering a healthier, more resilient learning environment.

NOT STARTED



Section

ADAPTATION & RESILIENCE

CREATE A SCHOOL COMMUNITY GARDEN FOR FOOD RESILIENCE

Establishing a community garden allows schools to grow their own fruits and vegetables, reducing reliance on external food sources. This initiative provides hands-on sustainability education, promotes healthy eating, and fosters a sense of community among pupils and staff.

NOT STARTED

PLANT TREES TO CREATE SHADED AREAS

Planting trees strategically around the school campus provides natural cooling, reducing the need for artificial cooling systems during hot months. Trees also improve air quality by filtering pollutants, enhance biodiversity by providing habitats for birds and insects, and create inviting outdoor learning spaces. As they grow, trees contribute to carbon sequestration, offsetting a portion of the school's emissions while simultaneously improving pupil wellbeing.

NOT STARTED



Section

ADAPTATION & RESILIENCE

SET UP A SCHOOL RESILIENCE COMMITTEE

Establishing a resilience committee ensures ongoing adaptation to environmental challenges. This team, composed of pupils, staff, and community members, can assess risks, implement sustainability policies, and coordinate resilience projects. Regular meetings will help track progress and adjust strategies as needed.

NOT STARTED

INSTALL WATER BUTTS

Water butts allow schools to collect and store rainwater, reducing dependence on mains water for irrigation, cleaning, and other non-drinking purposes. This initiative helps conserve water, cut utility costs, and educate pupils on sustainable water management practices. Schools implementing water butts can use them to water gardens, supply outdoor play areas, and even contribute to science lessons on water conservation.

Started: 12th Sep 2025

IN PROGRESS



Section

ADAPTATION & RESILIENCE

USE REFILLABLE WHITEBOARD MARKERS AND STATIONERY

Many standard whiteboard markers and pens are single-use, contributing to plastic waste. Schools can transition to refillable options, reducing landfill waste and lowering procurement costs in the long run. Refillable stationery is also often made from sustainable materials, further reducing environmental impact.

Started: 12th Sep 2025

IN PROGRESS





Section

BIODIVERSITY

CARRY OUT A NATURE SURVEY

Schools can conduct nature surveys to document the species of plants, insects, and animals found on school grounds. This information can help identify areas for biodiversity improvement, such as adding nesting boxes, planting native species, or reducing pesticide use. Engaging pupils in biodiversity monitoring promotes conservation awareness and scientific curiosity.

NOT STARTED

CREATE A HERB GARDEN FOR THE KITCHEN TO USE

Schools can create herb gardens to supply fresh ingredients for the kitchen, reducing the need for store-bought herbs and promoting sustainable food practices. Pupils can be involved in growing and maintaining the garden, learning valuable gardening and nutrition skills. Herb gardens also attract pollinators, supporting local biodiversity.

NOT STARTED



Section

BIODIVERSITY

CREATE A SCHOOL POLLINATOR GARDEN

A school pollinator garden provides a habitat for bees, butterflies, and other beneficial insects. By planting native wildflowers and nectar-rich plants, schools can contribute to biodiversity and support local ecosystems. These gardens also serve as valuable outdoor learning spaces where pupils can observe pollination in action and learn about the role of insects in food production.

NOT STARTED

INCREASE GREEN SPACE

Schools can transform unused or paved areas into green spaces by planting native plants, installing grass patches, or creating small gardens. Increasing green space improves air quality, provides habitats for wildlife, and creates healthier environments for students. Green spaces can also serve as outdoor learning areas, promoting environmental education.

NOT STARTED





Section

BIODIVERSITY

JOIN COMMUNITY INITIATIVES

Community environmental initiatives such as tree planting, litter picking, or local green space protection projects can provide excellent opportunities for pupils and staff to make a positive impact on their local environment. These initiatives also help build a culture of sustainability within your school or MAT.

NOT STARTED

PARTICIPATE IN THE RSPB BIRDWATCH

Schools can engage pupils in the Royal Society for the Protection of Birds (RSPB) Birdwatch, an annual citizen science event where participants record and report bird sightings. This initiative helps develop observation skills, raises awareness of biodiversity, and contributes valuable data for conservation efforts. Schools can integrate this activity into science and geography lessons to reinforce learning.

NOT STARTED





Section

BIODIVERSITY

SIGN YOUR SCHOOL UP TO EDUCATION NATURE PARK

Schools can participate in local or national education nature park programs to connect pupils with nature-based learning experiences. These programs provide hands-on engagement with biodiversity, conservation, and sustainability. By participating, pupils gain a deeper appreciation of the environment, and schools can access valuable teaching resources and support for outdoor learning initiatives.

NOT STARTED

WORK WITH THE PUPILS TO GET THEIR VIEWS ON HOW THE SCHOOL SITE SHOULD LOOK

Schools can involve pupils in decision-making about their learning environment, ensuring that sustainability considerations are incorporated. Whether through workshops, surveys, or school councils, pupil input can lead to more effective green space planning, improved outdoor learning areas, and projects that align with their needs and interests. Involving pupils also increases their sense of ownership and responsibility for the school environment.

NOT STARTED





Section

BIODIVERSITY

BUILD A SCHOOL POND FOR WILDLIFE

School ponds provide essential habitats for amphibians, insects, and birds, improving local biodiversity. They also offer a hands-on educational resource for pupils to study aquatic ecosystems, life cycles, and conservation. Proper maintenance ensures the pond remains a thriving habitat.

Started: 12th Sep 2025

Completed: 12th Sep 2025

COMPLETED

GET A COMPOST BIN TO REDUCE FOOD WASTE

Composting helps reduce landfill waste while creating nutrient-rich soil for school gardens. Schools should consider site suitability, maintenance requirements, and pest prevention strategies. Composting can also be incorporated into science lessons, providing pupils with hands-on learning about decomposition and soil health. Schools with kitchen facilities can work with catering teams to compost food scraps, further reducing waste.

Started: 12th Sep 2025

Completed: 12th Sep 2025

COMPLETED



Section

BIODIVERSITY

PLANT A HEDGE TO CREATE A NATURAL WINDBREAK

Hedgerows provide shelter for wildlife, improve air quality, and act as a natural windbreak to protect school buildings and playgrounds. They enhance green spaces while reducing noise pollution and improving local air quality.

Started: 12th Sep 2025

Completed: 12th Sep 2025

COMPLETED



Section

CLIMATE EDUCATION & GREEN SKILLS

CREATE A SCHOOL ECO COMMITTEE

A school eco committee gives pupils the opportunity to lead sustainability projects, influence school policies, and advocate for environmental improvements. This initiative fosters leadership, encourages responsibility, and ensures sustainability remains a core focus in school decision-making.

NOT STARTED

LAUNCH A CARBON FOOTPRINT AWARENESS CAMPAIGN

Schools can run campaigns to educate pupils and staff about their carbon footprints and practical ways to reduce them. Through posters, workshops, and hands-on activities, pupils can learn how their transportation choices, food consumption, and energy use contribute to emissions. This knowledge can lead to long-term changes in behaviour that support sustainability goals.

NOT STARTED



Section

CLIMATE EDUCATION & GREEN SKILLS

LAUNCH A SUSTAINABLE COMMUNTE CHALLENGE

Schools can organise competitions and incentives to promote walking, cycling, or public transport use instead of cars. This helps cut emissions, reduce traffic congestion, and encourage healthier lifestyles.

NOT STARTED

ORGANISE A PUPIL-LED ENERGY AND WASTE AUDIT

A school-wide audit allows pupils to evaluate energy use and waste production, identifying areas for improvement. This hands-on approach helps pupils understand real-world sustainability challenges and implement practical solutions such as reducing electricity use, recycling more effectively, and cutting down on single-use plastics.

NOT STARTED



Section

CLIMATE EDUCATION & GREEN SKILLS

ORGANISE A WALK TO SCHOOL WEEK

Encouraging pupils and staff to walk, bike, or use public transport instead of driving can reduce emissions and improve local air quality. A Walk to School Week helps raise awareness about the environmental and health benefits of active travel.

NOT STARTED

DEVELOP AN OUTDOOR LEARNING PROGRAM FOCUSED ON NATURE

Outdoor learning programs provide pupils with hands-on experiences in nature, teaching them about local ecosystems, biodiversity, and conservation. Schools can create learning gardens, conduct nature walks, or collaborate with conservation groups to enhance pupil engagement with the environment.

Started: 12th Sep 2025

Completed: 12th Sep 2025

COMPLETED

