

2019 KS2 School Dashboard

for governors & school leaders

Produce custom dashboards
at fftaspire.org

The Manor CofE VC Primary School

LA Wiltshire DFE 8652051 Produced September 2019 Version 1

What it is

Seven easy-to-use reports that help governors and school leaders to evaluate school performance using the latest 2019 DFE school performance indicators.

What it tells you

- What are the strengths and areas for improvement in your school?
- How does attainment and pupil progress compare to the national average over the last three years?
- How are you performing in different subjects?
- Do you have any under-performing groups of pupils?
- How might the context of your school affect performance?
- How does pupil attendance compare to the national average?

About the data shown

1 2 3

Actual results

Actual results for your school, using a range of measures such as averages and thresholds.



Gauges

These display headline indicators and whether actual results and pupils' progress are in line with, or significantly above or below, the national average.

ESTIMATED ↔ 1 2 3

Pupil progress

The value added progress that your pupils have made from one key stage to the next. FFT compares your actual results to the estimated results based on the progress of similar pupils nationally.



Statistical significance

Green plus signs and red minus signs highlight where either actual results or pupils' progress is significantly above or below the national average.



Trends

The dashboard analyses school performance over 3-5 years. Any significant year-on-year improvement is highlighted using an up arrow. Significant declines in performance are highlighted with a down arrow.



Strengths & weaknesses

These highlight key pupil groups and subjects where progress is above or below the national average.

Working in partnership with



Data sources

Generated from FFT Aspire which includes data sourced from the DfE (National Pupil Database) and data calculated by FFT. FFT is accredited as a DfE supplier to receive early access to ASP data. Headline performance indicators will be consistent with the DfE School Performance Tables and ASP.

Overview

KS2 Attainment 2019 · Actual results

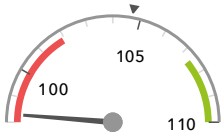
30 pupils

Average Scaled Score (Re, Ma)

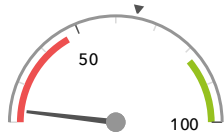
% Expected standard+ (Re, Wr, Ma)

98.3 -

23% -



Significantly below the national average (104.7) ◀



Significantly below the national average (65%) ◀

KS2 Progress 2019 · Value Added

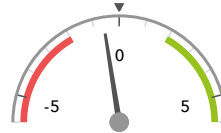
28 matched pupils

Average Scaled Score (Re, Ma)

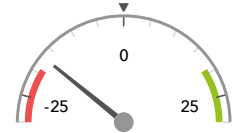
% Expected standard+ (Re, Wr, Ma)

-0.6

-17%



In line with the national average (0) ◀



In line with the national average (0%) ◀

KS2 higher and lower performing pupil groups 2019

	Higher performing	Lower performing
Overall achievement pupil progress	Spring Term (9) ↑ Male (16) ↑ Not FSM (ever) (16) ↑	Female (12) Autumn Term (6) FSM (ever) (12)
KS2 reading achievement pupil progress	No SEN (21) Summer Term (13) Middle attainers (21) ↑	SEN Support (5) Lower attainers (6) Autumn Term (6)
KS2 writing achievement pupil progress	Spring Term (9) FSM (5) Not FSM (ever) (16)	Lower attainers (6) Summer Term (13) FSM (ever) (12)
KS2 mathematics achievement pupil progress	Spring Term (9) ↑ Male (16) ↑	Female (12) - Autumn Term (6) Summer Term (13) -
KS2 grammar, punctuation & spelling achievement pupil progress	Spring Term (9) ↑ Male (16) ↑ Not FSM (ever) (16) ↑	Autumn Term (6) FSM (5) Female (12)

Attainment & progress

KS2 Attainment 2019

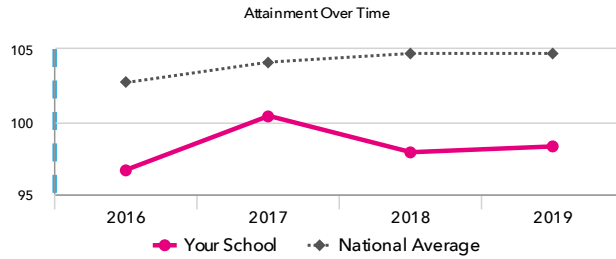
30 pupils

Average Scaled Score (Re, Ma)

98.3



Significantly below the national average (104.7)

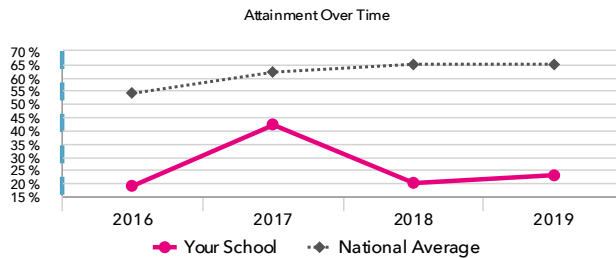


% Expected standard+ (Re, Wr, Ma)

23%



Significantly below the national average (65%)



KS2 Progress 2019

28 matched pupils

Average Scaled Score (Re, Ma)

-0.6



In line with the national average (0)

% Expected standard+ (Re, Wr, Ma)

-17%



In line with the national average (0%)

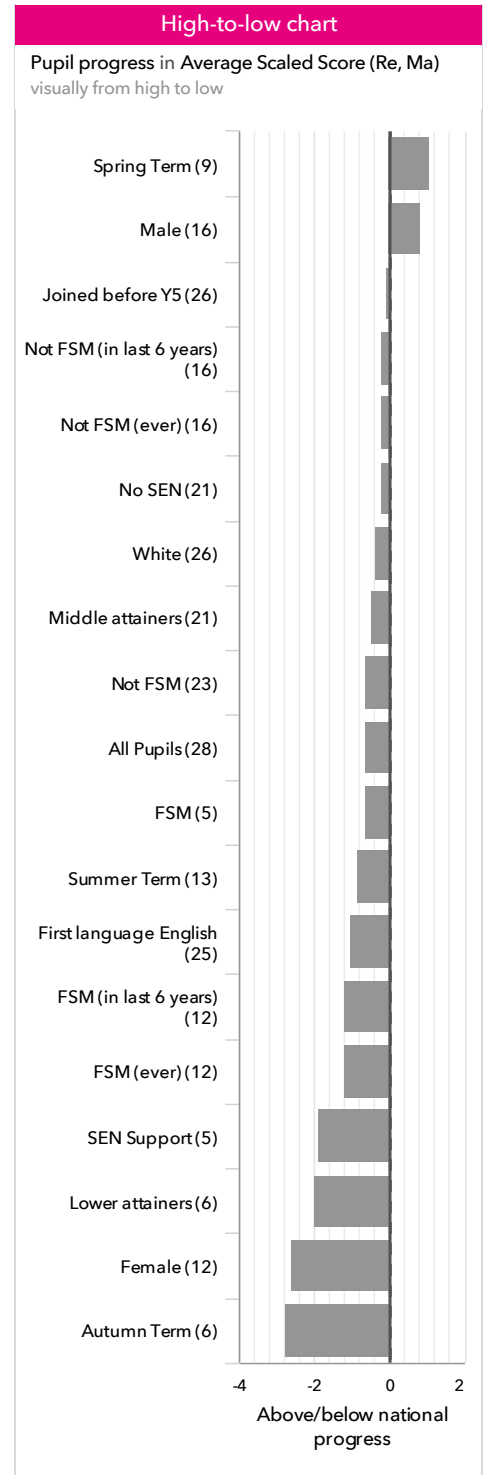
KS2 performance summary

	Actual results			Pupil progress		
	2017	2018	2019	2017	2018	2019
Number of Pupils / % Matched	24	20	30	96%	95%	93%
% Expected standard+ (Re, Wr, Ma)	42%	20%	23%	-16%	-31%	-17%
% Higher standard (Re, Wr, Ma)	0%	0%	3%	-6%	-3%	+2%
Average Scaled Score (Re, GPS, Ma)	100.7	97.5	98.5	-3.1	-4.0	-0.5
Average Scaled Score (Re, Ma)	100.4	97.9	98.3	-2.9	-3.6	-0.6
% Expected standard+ Reading	58%	35%	50%	-10%	-31%	-0%
% Higher standard Reading	21%	20%	20%	+1%	+3%	+11%
Scaled Score Reading	100.4	99.5	99.5	-2.8	-2.4	+1.0
% Expected standard+ Writing	71%	60%	50%	-6%	-8%	-5%
% Higher standard Writing	0%	0%	7%	-13%	-10%	+2%
Scaled Score Writing	99.5	96.4	94.8	-1.8	-1.9	-0.5
% Expected standard+ Maths	58%	35%	33%	-19%	-29%	-27%
% Higher standard Maths	13%	10%	7%	-10%	-1%	-3%
Scaled Score Maths	100.4	96.4	97.3	-3.1	-4.5	-2.2
% Expected standard+ Grammar, Punctuation & Spelling	54%	40%	60%	-24%	-27%	+6%
% Higher standard Grammar, Punctuation & Spelling	21%	10%	10%	-4%	-11%	-4%
Scaled Score Grammar, Punctuation & Spelling	101.6	97.6	100.4	-3.6	-4.6	+1.0
% Expected standard+ Science	25%	60%	70%	-	-	-

Pupil groups

KS2 Pupil groups performance 2019

	Pupils	Actual results			Pupil progress			
		Average Scaled Score (Re, Ma)	% Expected standard+ (Re, Wr, Ma)	% Higher standard (Re, Wr, Ma)	Average Scaled Score (Re, Ma)	% Expected standard+ (Re, Wr, Ma)	% Higher standard (Re, Wr, Ma)	
Summary	All Pupils	30	98.3 -	23% -	3%	-0.6	-17%	+2%
Gender	Male	17	98.9 - ↑	29% -	6%	+0.8 ↑	-6%	+5%
	Female	13	97.4 -	15% -	0%	-2.6	-32% -	-1%
DFE Prior Attainment	Higher attainers	1	115.0	100%	0%	+4.6	+6%	-15%
	Middle attainers	21	101.2 ↑	29% -	5%	-0.5 ↑	-22%	+4%
	Lower attainers	6	86.3	0%	0%	-2.0	-5%	-0%
Pupil Premium	FSM (in last 6 years)	12	97.0 -	17% -	0%	-1.2	-27%	-2%
	Not FSM (in last 6 years)	17	99.1 -	29% -	6%	-0.2	-10%	+6% +
FSM	FSM	5	95.9	20%	0%	-0.6	-10%	-3%
	Not FSM	24	98.8 -	25% -	4%	-0.6 ↑	-19%	+3%
FSM Ever	FSM (ever)	12	97.0 -	17% -	0%	-1.2	-27%	-2%
	Not FSM (ever)	17	99.1 -	29% -	6%	-0.2	-10%	+6% +
Term of Birth	Autumn Term	7	99.2	29%	0%	-2.8	-21%	-3%
	Spring Term	10	98.0 -	20% -	10%	+1.1 ↑	-10%	+10% +
	Summer Term	13	98.1 -	23% -	0%	-0.8	-21%	-1%
SEN Group	SEN Support	5	92.1	20%	0%	-1.9 ↑	-0%	-0%
	EHC Plan	2	82.3	0%	0%	-2.0	-3%	-0%
	No SEN	23	101.1 -	26% -	4%	-0.2	-23% -	+3%
EAL	First language not English	5	101.3	20%	20%	+2.9	-19%	+32%
	First language English	25	97.8 -	24% -	0%	-1.1	-17%	-1%
Mobility	Joined in Y5 or Y6	4	95.2	0%	0%	-7.6	-71%	-2%
	Joined before Y5	26	98.6 -	27% -	4%	-0.1 ↑	-13%	+3%
Ethnicity	White	28	98.3 -	25% -	4%	-0.3 ↑	-14%	+2%
	Black Caribbean	2	98.5	0%	0%	-4.3	-56%	-1%



Subjects

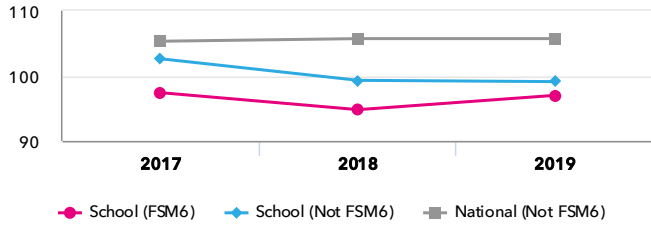
KS2 subject performance 2019

	Actual results			Pupil progress			Actual results over time		
	2017	2018	2019	2017	2018	2019			
Number of Pupils / % Matched	24	20	30	96%	95%	93%			
Reading									
% Expected standard+	58%	35% ⬇	50% ⬇	-10%	-31% ⬇	-0%			
% Higher standard	21%	20%	20%	+1%	+3%	+11%			
Scaled Score	100 ⬇	99 ⬇	100 ⬇	-2.8 ⬇	-2.4	+1.0			
Writing									
% Expected standard+	71%	60%	50% ⬇	-6%	-8%	-5%			
% Higher standard	0% ⬇	0% ⬇	7%	-13%	-10%	+2%			
Scaled Score	100	96 ⬇	95 ⬇	-1.8 ⬇	-1.9	-0.5			
Maths									
% Expected standard+	58%	35% ⬇	33% ⬇	-19%	-29% ⬇	-27% ⬇			
% Higher standard	13%	10%	7% ⬇	-10%	-1%	-3%			
Scaled Score	100 ⬇	96 ⬇	97 ⬇	-3.1 ⬇	-4.5 ⬇	-2.2 ⬇			
Grammar, Punctuation & Spelling									
% Expected standard+	54% ⬇ ⬆	40% ⬇	60% ⬇	-24% ⬇	-27% ⬇	+6% ⬆			
% Higher standard	21%	10% ⬇	10% ⬇	-4%	-11%	-4%			
Scaled Score	102 ⬇ ⬆	98 ⬇	100 ⬇	-3.6 ⬇	-4.6 ⬇	+1.0 ⬆			
Science									
% Expected standard+	25% ⬇ ⬆	60% ⬇ ⬆	70%	-	-	-			

Disadvantaged pupils

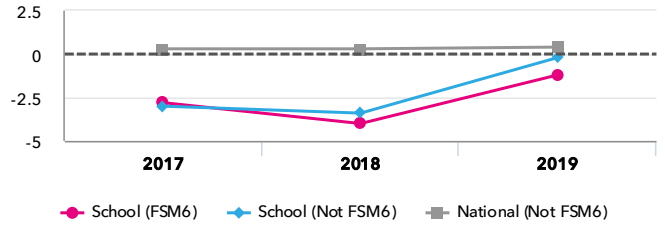
KS2 attainment for disadvantaged pupils 2019

Average Scaled Score (Re, Ma)



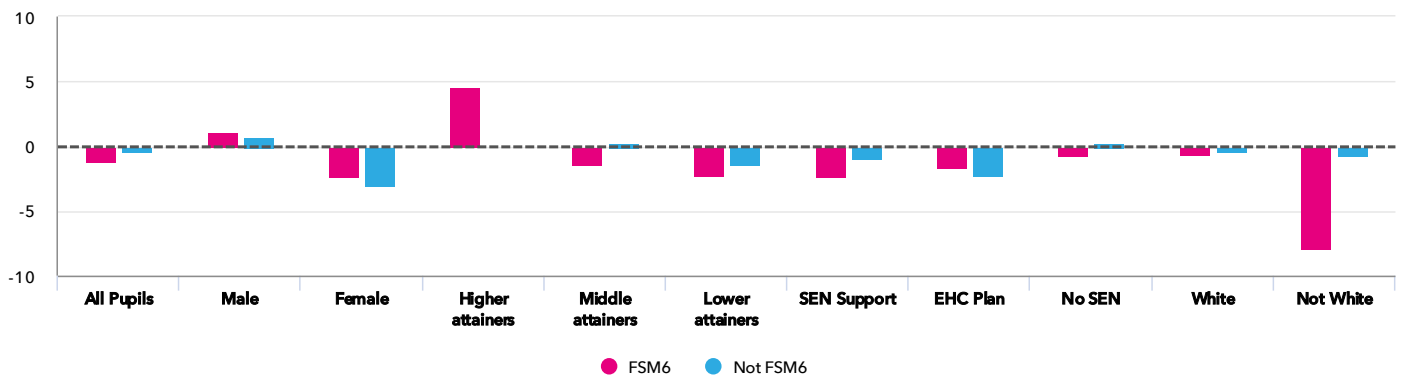
KS2 progress for disadvantaged pupils 2019

Average Scaled Score (Re, Ma)



Progress gap

Average Scaled Score (Re, Ma)

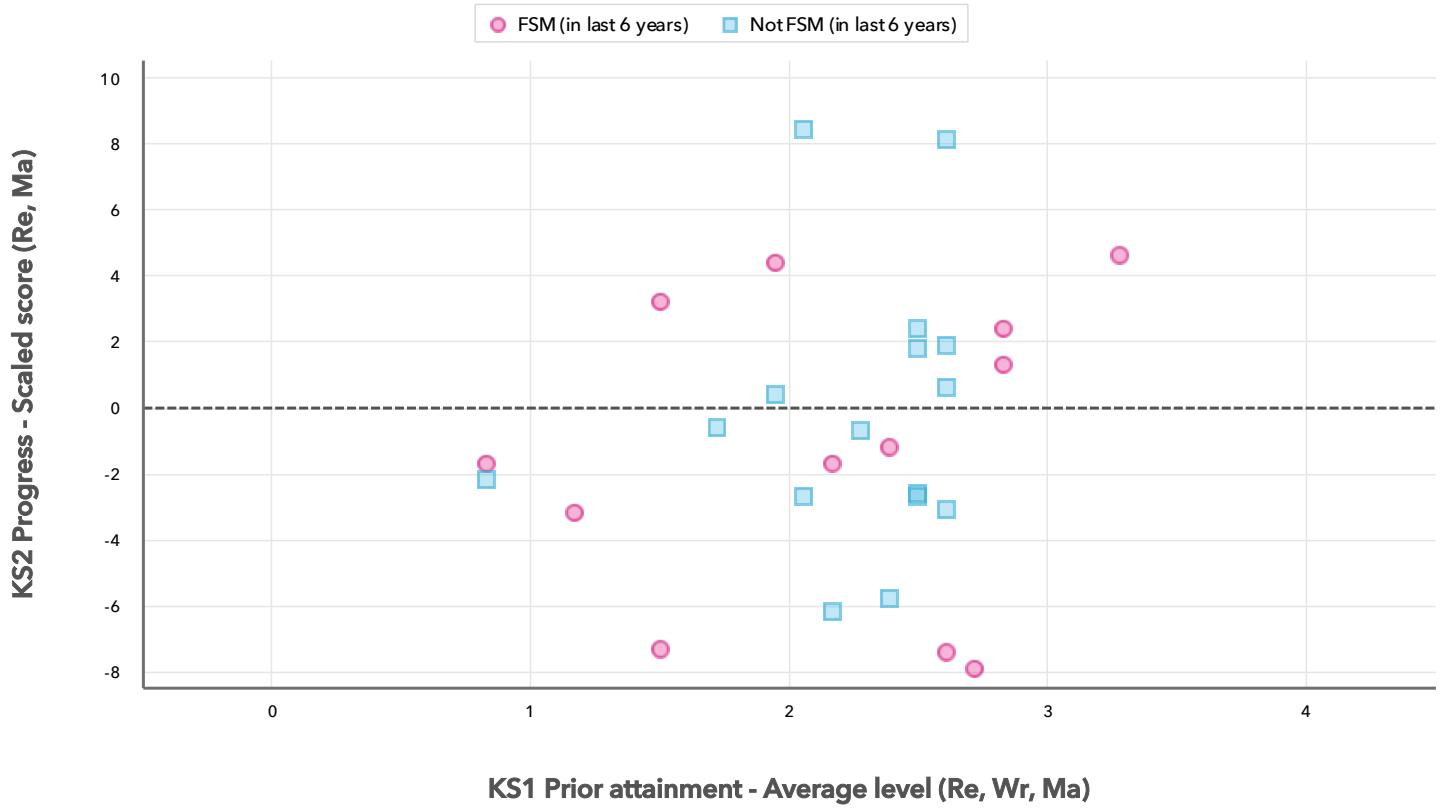


Attainment & progress

Pupils	Attainment			Progress					
	Average Scaled Score (Re, Ma)			Average Scaled Score (Re, Ma)					
	FSM6	Not FSM6	Gap	FSM6	Not FSM6	Gap			
Summary	All Pupils	12	17	97.0	99.1	-2.1	-1.2	-0.2	-1.0
Gender	Male	4	13	96.8	99.5	-2.7	1.1	0.8	0.3
	Female	8	4	97.2	97.9	-0.7	-2.4	-3.1	0.7
DFE Prior Attainment	Higher attainers	1	-	115	-	-	4.6	-	-
	Middle attainers	7	14	101	101.3	-0.3	-1.4	-0.0	-1.4
	Lower attainers	4	2	85.6	87.8	-2.2	-2.3	-1.4	-0.9
SEN Group	SEN Support	3	2	86.7	100.3	-13.6	-2.4	-1.0	-1.4
	EHC Plan	1	1	82.5	82	0.5	-1.7	-2.2	0.5
	No SEN	8	14	102.8	100.2	2.6	-0.7	0.1	-0.8
Ethnic Group	White	11	16	97.1	99.1	-2.0	-0.6	-0.2	-0.4
	Not White	1	1	96.5	100.5	-4.0	-7.9	-0.7	-7.2

Scatterplot

KS2 Pupil scatterplot 2019 30 pupils highlighted by Pupil Premium



Context

Context - Year 6

		Pupils	Comparative profile 2018 / 2019		Absence during Key Stage 2		Persistent absence during Key Stage 2	
		School	School	National	School	National	School	National
Summary	All Pupils	30	100%	100%	-	-	-	-
Gender	Male	18	60%	51%	-	-	-	-
	Female	12	40%	49%	-	-	-	-
DFE Prior Attainment	Higher attainers	1	3%	32%	-	-	-	-
	Middle attainers	21	70%	54%	-	-	-	-
	Lower attainers	6	20%	8%	-	-	-	-
Pupil Premium	FSM (in last 6 years)	13	43%	30%	-	-	-	-
	Not FSM (in last 6 years)	17	57%	70%	-	-	-	-
FSM	FSM	6	20%	16%	-	-	-	-
	Not FSM	24	80%	84%	-	-	-	-
FSM Ever	FSM (ever)	13	43%	30%	-	-	-	-
	Not FSM (ever)	17	57%	70%	-	-	-	-
Term of Birth	Autumn Term	6	20%	33%	-	-	-	-
	Spring Term	11	37%	33%	-	-	-	-
	Summer Term	13	43%	34%	-	-	-	-
SEN Group	SEN Support	5	17%	15%	-	-	-	-
	EHC Plan	3	10%	3%	-	-	-	-
	No SEN	22	73%	82%	-	-	-	-
EAL	First language not English	4	13%	21%	-	-	-	-
	First language English	26	87%	79%	-	-	-	-
Mobility	Joined in Y5 or Y6	3	10%	7%	-	-	-	-
	Joined before Y5	27	90%	93%	-	-	-	-
Ethnicity	White	28	93%	74%	-	-	-	-
	Black Caribbean	2	7%	3%	-	-	-	-