

2019 KS1 School Dashboard

for governors & school leaders

Produce custom dashboards
at fftaspire.org

The Manor CofE VC Primary School

LA Wiltshire DFE 8652051 Produced October 2019 Version 1

What it is

Seven easy-to-use reports that help governors and school leaders to evaluate school performance using the latest 2019 DFE school performance indicators.

What it tells you

- What are the strengths and areas for improvement in your school?
- How does attainment and pupil progress compare to the national average over the last three years?
- How are you performing in different subjects?
- Do you have any under-performing groups of pupils?
- How might the context of your school affect performance?
- How does pupil attendance compare to the national average?

About the data shown

1 2 3

Actual results

Actual results for your school, using a range of measures such as averages and thresholds.



Gauges

These display headline indicators and whether actual results and pupils' progress are in line with, or significantly above or below, the national average.

ESTIMATED



1 2 3

Pupil progress

The value added progress that your pupils have made from one key stage to the next. FFT compares your actual results to the estimated results based on the progress of similar pupils nationally.



Statistical significance

Green plus signs and red minus signs highlight where either actual results or pupils' progress is significantly above or below the national average.



Trends

The dashboard analyses school performance over 3-5 years. Any significant year-on-year improvement is highlighted using an up arrow. Significant declines in performance are highlighted with a down arrow.



Strengths & weaknesses

These highlight key pupil groups and subjects where progress is above or below the national average.

Working in partnership with



Data sources

Generated from FFT Aspire which includes data sourced from the DfE (National Pupil Database) and data calculated by FFT. FFT is accredited as a DfE supplier to receive early access to ASP data. Headline performance indicators will be consistent with the DfE School Performance Tables and ASP.

Overview

KS1 Attainment 2019 · Actual results

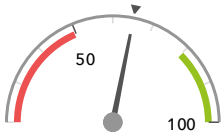
40 pupils

% Expected Standard + (Re, Wr, Ma)

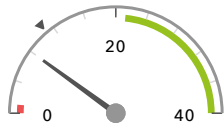
% Higher Standard (Re, Wr, Ma)

65%

8%



In line with the national average (65%) ◀



In line with the national average (11%) ◀

KS1 Progress 2019 · Value Added

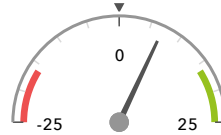
39 matched pupils

% Expected Standard + (Re, Wr, Ma)

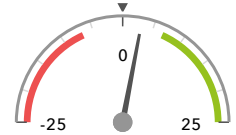
% Higher Standard (Re, Wr, Ma)

+7%

+3%



In line with the national average (0%) ◀



In line with the national average (0%) ◀

KS1 higher and lower performing pupil groups 2019

	Higher performing	Lower performing
Overall achievement pupil progress	Higher attainers (7) ↑ FSM (7) FSM (in last 6 years) (9) ↑	SEN Support (5)
KS1 reading achievement pupil progress	Higher attainers (7) FSM (in last 6 years) (9) Female (20)	SEN Support (5)
KS1 writing achievement pupil progress	Spring Term (12) FSM (7) Female (20)	SEN Support (5) Male (19)
KS1 mathematics achievement pupil progress	Higher attainers (7) Autumn Term (12) FSM (in last 6 years) (9)	

Attainment & progress

KS1 Attainment 2019

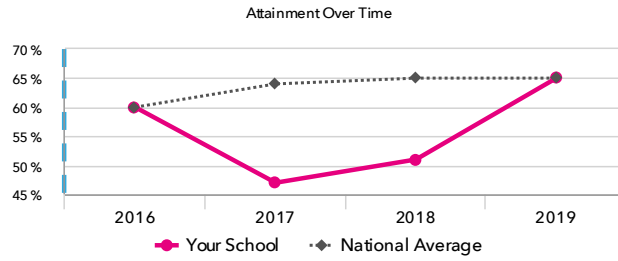
40 pupils

% Expected Standard + (Re, Wr, Ma)

65%



In line with the national average (65%)



KS1 Progress 2019

39 matched pupils

% Expected Standard + (Re, Wr, Ma)

+7%



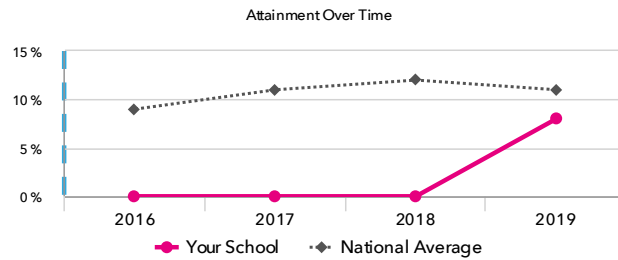
In line with the national average (0%)

% Higher Standard (Re, Wr, Ma)

+3%



In line with the national average (0%)



% Higher Standard (Re, Wr, Ma)

8%



In line with the national average (11%)

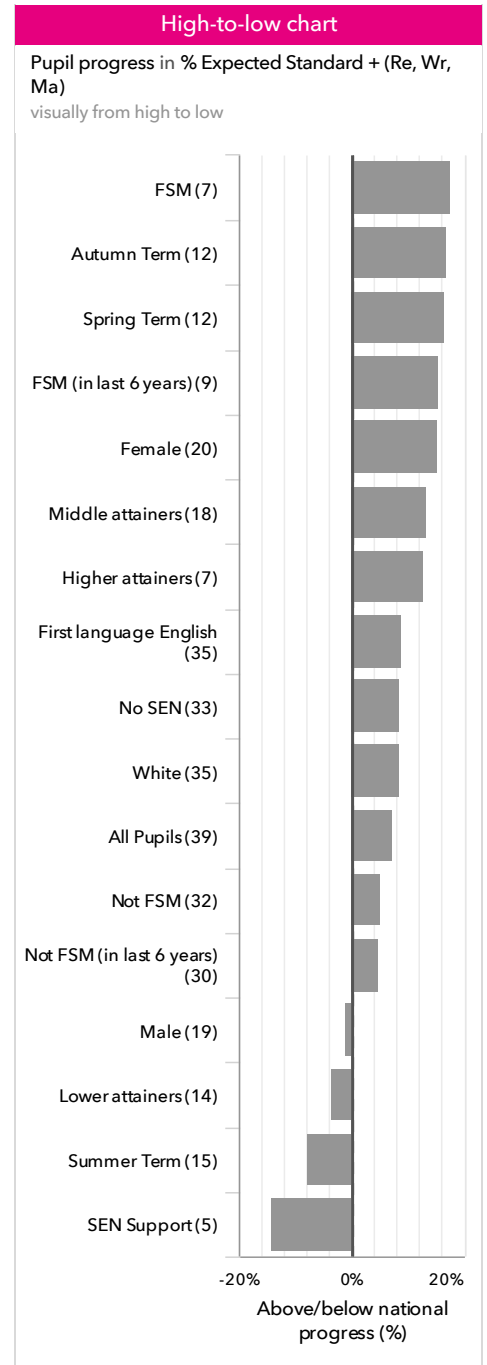
KS1 performance summary

	Actual results			Pupil progress		
	2017	2018	2019	2017	2018	2019
Number of Pupils / % Matched	43	35	40	100%	100%	98%
% Expected Standard + (Re, Wr, Ma)	47% -	51%	65%	-22% - ↓	-11%	+7%
% Higher Standard (Re, Wr, Ma)	0% -	0% -	8%	-7%	-5%	+3%
% Expected Standard + Reading	65%	71%	80%	-16% - ↓	-4%	+11%
% Higher Standard Reading	5% -	9% -	28%	-17% -	-9%	+13% +
% Expected Standard + Writing	53% -	60%	70%	-20% -	-9%	+7%
% Higher Standard Writing	0% -	0% -	13%	-12% -	-9%	+6%
% Expected Standard + Maths	72%	66%	80%	-8%	-10%	+10%
% Higher Standard Maths	9%	23%	23%	-5%	+9%	+11% +

Pupil groups

KS1 Pupil groups performance 2019

	Pupils	Actual results		Pupil progress		
		% Expected Standard + (Re, Wr, Ma)	% Higher Standard (Re, Wr, Ma)	% Expected Standard + (Re, Wr, Ma)	% Higher Standard (Re, Wr, Ma)	
Summary	All Pupils	40	65%	8%	+7%	+3%
Gender	Male	19	47%	5%	-1%	+0%
	Female	21	81%	10%	+15%	+6%
Prior Attainment	Higher attainers	7	100%	29%	+13%	+14%
	Middle attainers	18	89%	0%	+13%	-4%
	Lower attainers	14	14%	7% +	-4%	+7% +
Pupil Premium	FSM (in last 6 years)	9	67%	0%	+15%	-3%
	Not FSM (in last 6 years)	31	65%	10%	+5%	+5%
FSM	FSM	7	71%	0%	+18%	-3%
	Not FSM	33	64%	9%	+5%	+4%
Term of Birth	Summer Term	15	47%	0%	-8%	-3%
	Spring Term	13	62%	15%	+16%	+12%
	Autumn Term	12	92%	8%	+17%	+2%
SEN Group	SEN Support	5	0%	0%	-14%	-0%
	EHC Plan	1	100%	0%	+71%	-0%
	No SEN	34	74%	9%	+9%	+4%
EAL	First language not English	4	25%	25%	-6%	+24%
	First language English	36	69% ↑	6%	+9% ↑	+1%
Ethnicity	White	35	63%	9%	+8%	+4%
	Black Caribbean	1	0%	0%	-73%	-4%
	Black African	1	100%	0%	-	-
	Any Other	2	100%	0%	+17%	-7%
	Unknown	1	100%	0%	+25%	-4%



Subjects

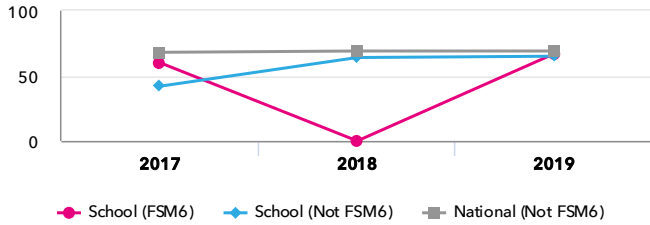
KS1 subject performance 2019

	Actual results			Pupil progress			Actual results over time		
	2017	2018	2019	2017	2018	2019			
Number of Pupils / % Matched	43	35	40	100%	100%	98%			
Reading									
% Expected Standard +	65%	71%	80%	-16% ⬇️	-4%	+11%			
% Higher Standard	5% ⬇️	9% ⬇️	28%	-17% ⬇️	-9%	+13% ⬆️			
Writing									
% Expected Standard +	53% ⬇️	60%	70%	-20% ⬇️	-9%	+7%			
% Higher Standard	0% ⬇️	0% ⬇️	13%	-12% ⬇️	-9%	+6%			
Maths									
% Expected Standard +	72%	66%	80%	-8%	-10%	+10%			
% Higher Standard	9%	23%	23%	-5%	+9%	+11% ⬆️			
Science									
% Expected Standard +	81%	91%	93%	-	-	-			

Disadvantaged pupils

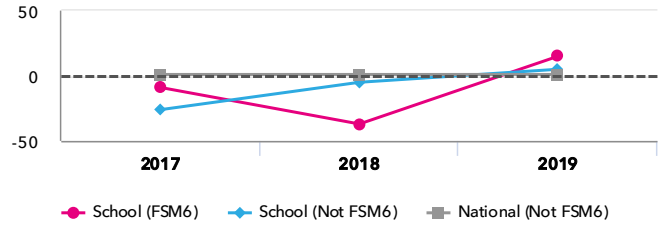
KS1 attainment for disadvantaged pupils 2019

% Expected Standard + (Re, Wr, Ma)



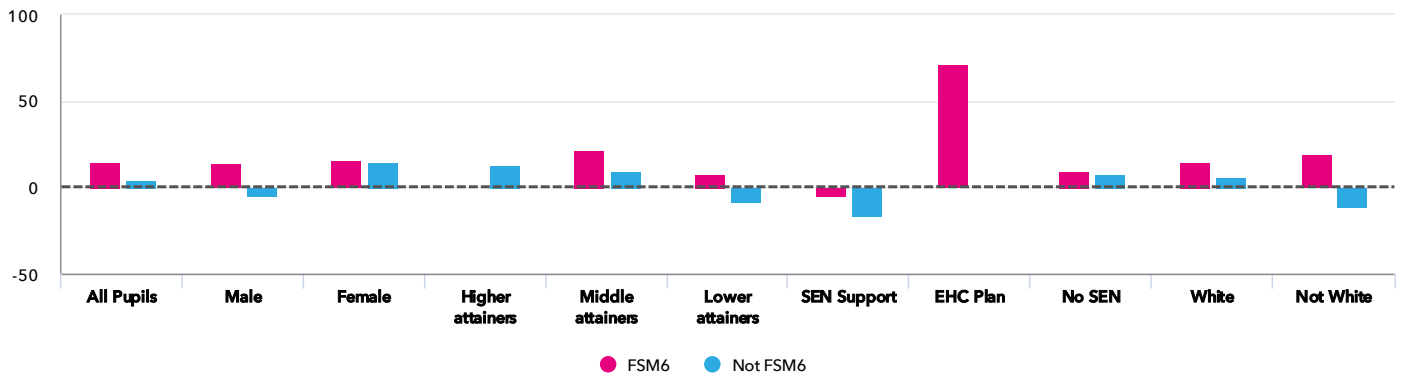
KS1 progress for disadvantaged pupils 2019

% Expected Standard + (Re, Wr, Ma)



Progress gap

% Expected Standard + (Re, Wr, Ma)

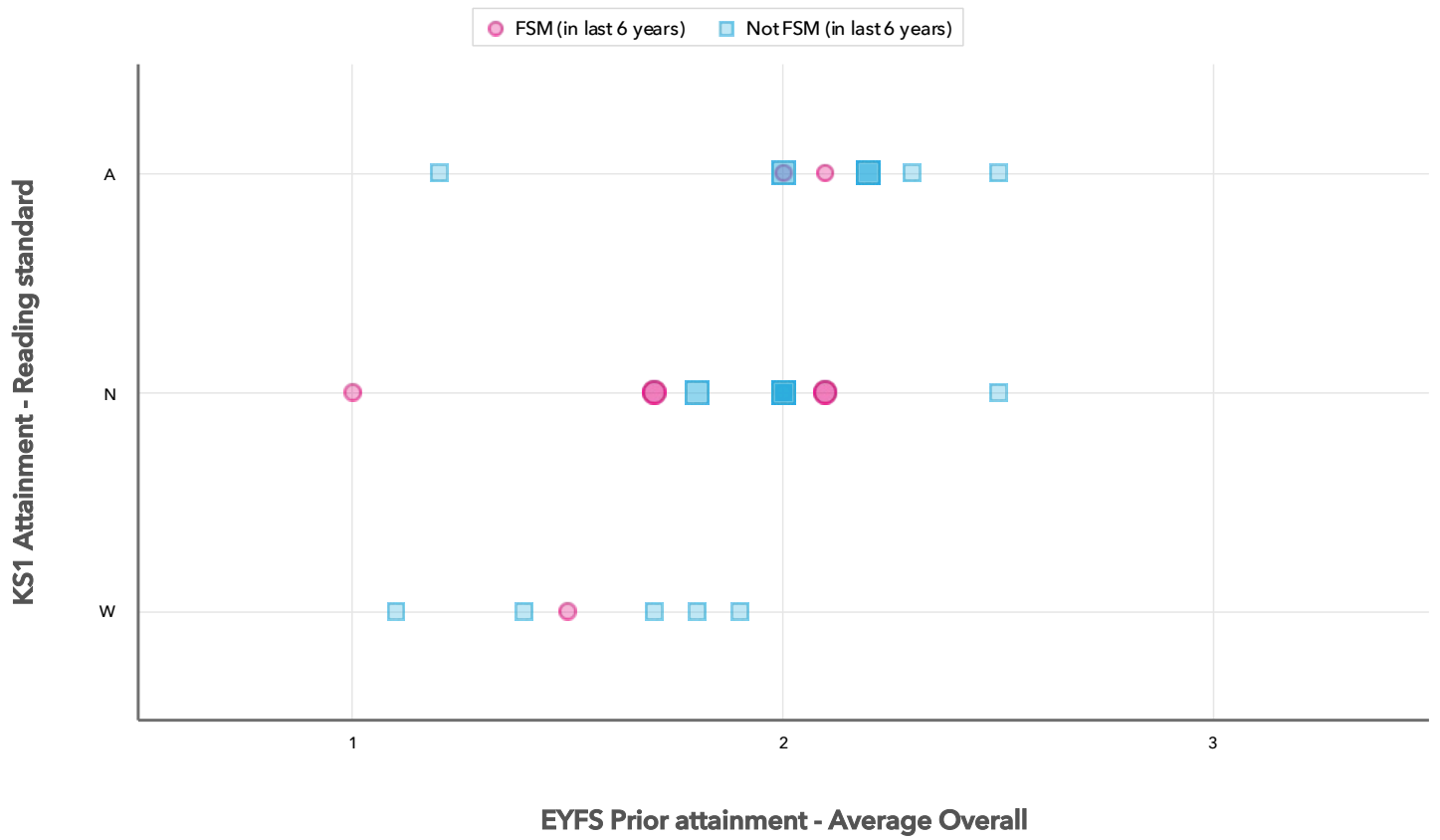


Attainment & progress

Pupils	Attainment			Progress					
	FSM6	Not FSM6	% Expected Standard + (Re, Wr, Ma)			FSM6	Not FSM6	Gap	
			FSM6	Not FSM6	Gap				
Summary	All Pupils	9	31	67%	65%	2%	15%	5%	10%
Gender	Male	4	15	50%	47%	3%	14%	-5%	19%
	Female	5	16	80%	81%	-1%	16%	15%	1%
Prior Attainment	Higher attainers	-	7	-	100%	-	-	13%	-
	Middle attainers	5	13	100%	85%	15%	22%	10%	12%
	Lower attainers	4	10	25%	10%	15%	8%	-8%	16%
SEN Group	SEN Support	1	4	0%	0%	0%	-5%	-16%	11%
	EHC Plan	1	-	100%	-	-	71%	-	-
	No SEN	7	27	71%	74%	-3%	10%	8%	2%
Ethnic Group	White	8	27	63%	63%	0%	15%	6%	9%
	Not White	1	4	100%	75%	25%	19%	-11%	30%

Scatterplot

KS1 Pupil scatterplot 2019 40 pupils highlighted by Pupil Premium



Context

Context - Year 2

		Pupils	Comparative profile 2018 / 2019		Absence during Key Stage 1		Persistent absence during Key Stage 1	
		School	School	National	School	National	School	National
Summary	All Pupils	40	100%	100%	-	-	-	-
Gender	Male	19	48%	51%	-	-	-	-
	Female	21	53%	49%	-	-	-	-
Prior Attainment	Higher attainers	7	18%	35%	-	-	-	-
	Middle attainers	18	45%	34%	-	-	-	-
	Lower attainers	14	35%	28%	-	-	-	-
Pupil Premium	FSM (in last 6 years)	9	23%	21%	-	-	-	-
	Not FSM (in last 6 years)	31	78%	79%	-	-	-	-
FSM	FSM	7	18%	16%	-	-	-	-
	Not FSM	33	83%	84%	-	-	-	-
Term of Birth	Summer Term	15	38%	34%	-	-	-	-
	Spring Term	13	33%	33%	-	-	-	-
	Autumn Term	12	30%	34%	-	-	-	-
SEN Group	SEN Support	5	13%	13%	-	-	-	-
	EHC Plan	1	3%	2%	-	-	-	-
	No SEN	34	85%	85%	-	-	-	-
EAL	First language not English	4	10%	21%	-	-	-	-
	First language English	36	90%	79%	-	-	-	-
Ethnicity	White	35	88%	74%	-	-	-	-
	Black Caribbean	1	3%	3%	-	-	-	-
	Black African	1	3%	5%	-	-	-	-
	Any Other	2	5%	4%	-	-	-	-
	Unknown	1	3%	1%	-	-	-	-