

Year 7

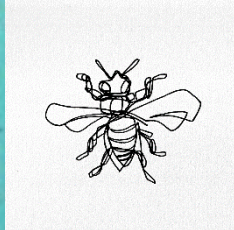
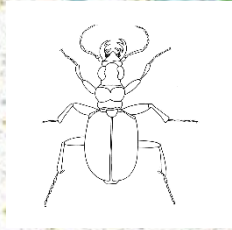
September – February Bugs & Insects

Line

Line is the patch left by a moving point. For example, a pencil or brush dipped in paint. A line can take many forms.

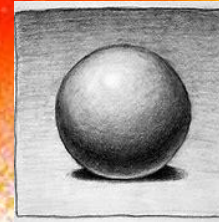
Question

What materials could you use to make different types of lines?



Formal elements

The Formal Elements are the parts used to make a piece of artwork. The art elements are line, form, tone, texture, colour and composition. They are often used together, and how they are organised in a piece of art determines what the finished piece will look like.



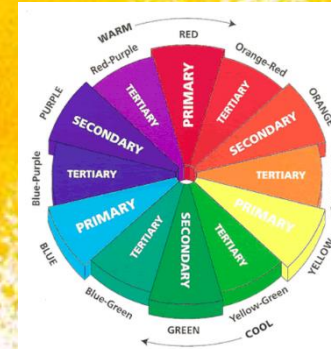
Colour

Red, yellow and blue are primary colours which means they can't be mixed using any other colours.

2 primary colours mixed together make a secondary colour. Tertiary colours are made by combining a secondary colour with a primary colour. The colour wheel is used for colour theory.

Question

How can colour theory be used to compliment a piece of art?



Complimentary colours

2 colours that sit opposite on the colour wheel. This contrast will make colours appear brighter and more prominent.

Texture

Using mark making to create visual texture or using materials to create physical texture. Texture refers to the way an object feels or looks as if it might feel if touched.

Question

How can surface texture be used to create marks?



Eileen Downes Collage artist

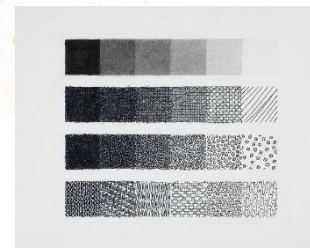
'...the artist who "paints" with bits of torn paper instead of paint for a palette'

Tone

Tone refers to the lightness or darkness of something. Tone and shading can be used to make 2D look 3D giving it form.

Question

How can you change the tone of a colour?



Composition

The term used to describe the arrangements of the visual elements.

Form

A form has height, width and depth, it is three-dimensional or is perceived to be through the use of shading.

Question

How can shade and tone be used to make an image 3-d?