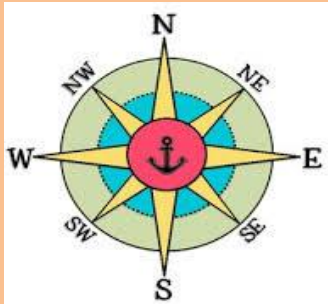


I know my areas.

- Local- Wolstanton
- Regional- West midlands
- National- England
- Continental- Europe
- Global- The world

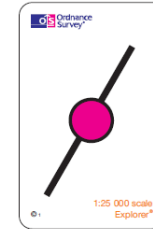
I know my compass directions.



I can name the 7 continents and 5 oceans.



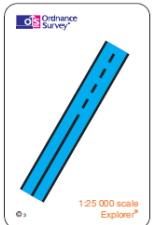
I can recognise OS map symbols.



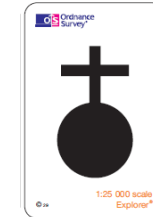
Train station



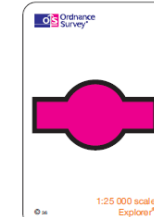
Parking



Motorway



Place of worship with spire



Bus/coach station



Cliff edge



Information centre



Footpath



Place of worship with tower



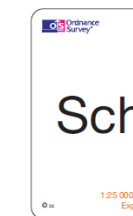
Castle/fort



View point



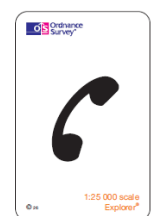
Picnic site



School



Post office



Telephone

I know how to use a compass.

1. Hold the compass flat
2. Spin the dial so that the direction you want to go is in line with the D.O.G.
3. Turn your body until Fred is in the shed

Fred
The red needle
AKA the north arrow



D.O.G
Direction of go.

Shed
The red arrow that you can spin.

How do I know my place in the world?

I know the difference between names for the UK.

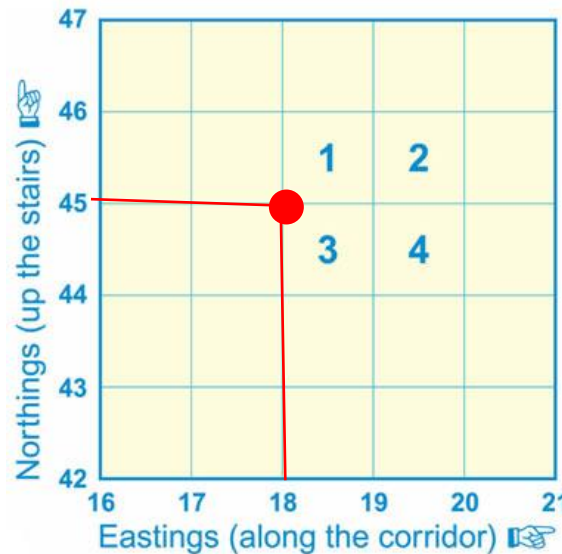
Britain means England, Wales and Scotland

The UK means England, Wales, Scotland, and Northern Ireland

The British Isles means England, Wales, Scotland, Northern Ireland and Southern Ireland.



I can read 4 figure grid references.



Square 1
(18, 45)

Square 2
(19, 45)

Square 3
(18, 44)

Square 4
(19, 44)