

Key words and abbreviations

Human- How human activity affects the earth.

Physical- The natural features of the earth.

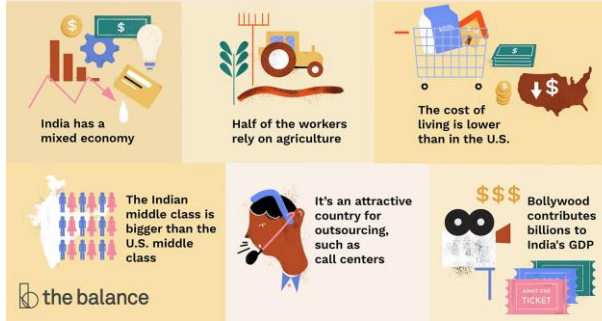
Relief- The height of the land above sea level

Slum- an overcrowded urban area inhabited by very poor people.

Economy- The production and consumption of goods and services to fulfil the needs of people.

Globalisation- Globalisation is the process by which people and goods move easily across borders.

Facts About India's Economy

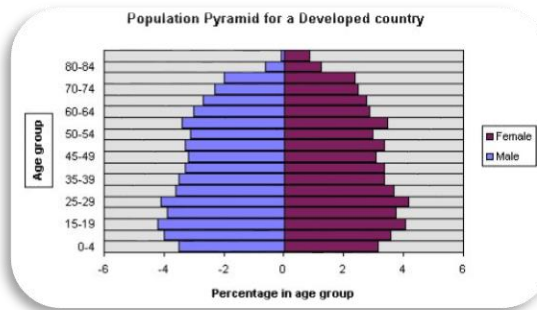


China and India

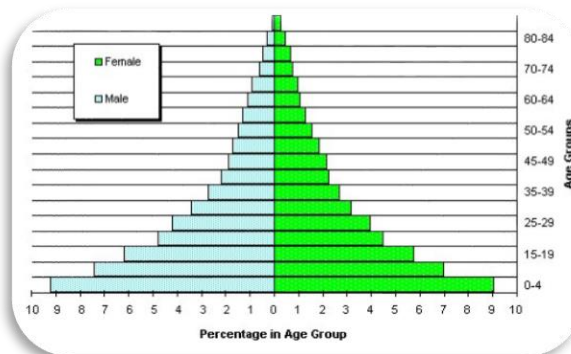
Human and Physical features of China



Population pyramids



This shape is typical of an HIC. It is narrow at the base meaning low birth rate and stays quite wide until the very top meaning long life expectancy.



A wide base means high birth rate and a thin top means a high death rate.

Effects of globalisation on Bangalore



People are becoming more influenced by western culture. They drink more alcohol, go to clubs and pubs.



Call centres have contributed to India's growing economy and Bangalore's in particular. In 3 years, the number of call centres rose from 50 to 800.



Bangalore is the richest city in India yet it has 733 slums.



Bangalore has the highest density of traffic in the world causing considerable air pollution problems.

Human and Physical features of India

