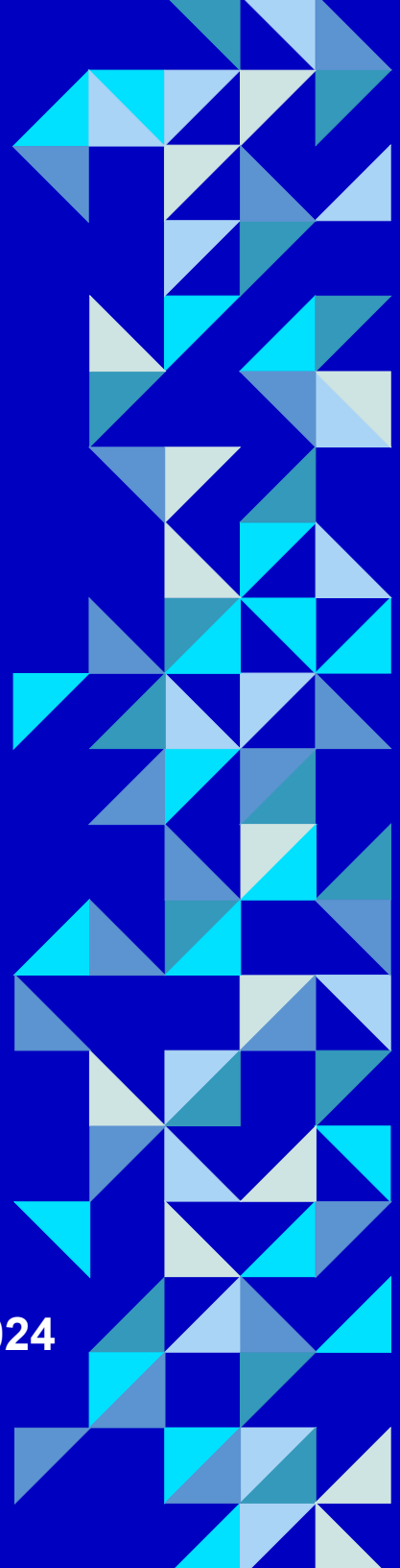


**Individual in Approach
Exceptional in Outcome...**

**The
Ridgeway
Sixth Form**



Prospectus 2024



Contact us:

Mrs Zoe Smith
Assistant Principal, Head of Sixth Form
smithz@ridgewayschool.com

Miss Sophie Collins
Head of Year 13
collinss@ridgewayschool.com

Mrs Rebecca Brake
Head of Year 12
braker@ridgewayschool.com

Mrs Amy Midson
Sixth Form Student Advisor
midsona@ridgewayschool.com

Ms Sara Hoyland
Sixth Form Administrator
hoylands@ridgewayschool.com

General enquiries: 01793 846100
Sixth Form Office: 01793 846135

www.ridgewayschool.com

Open days: Please see our website or telephone for dates and times. Visitors are always welcome throughout the year. Please contact the school to schedule an appointment.





The
Ridgeway
Sixth Form

Contents

Welcome	5
R6 Aspire	6
R6 Support	7
R6 Place to Study	8
R6 Advice	9
R6 Community	10
R6 Life	11
R6 Achievements	12
R6 Student Leadership	13
R6 Aspirations	14
How to choose Your Courses	16
Vocational Degrees	17
R6 Pathways	18
R6 Course Types & Combinations	19
Applications	20
Courses	22
Additional Opportunities	46
Course Contacts	50



The Ridgeway School Sixth Form above all aims to develop you into an independent learner. The skills and habits you learn now will stand you in good stead for the rest of your working life.



“ Welcome to our Thriving and Dynamic Sixth Form. ”





“ When it’s this much fun you don’t notice how much you’re learning. ”

Sixth Form student

Welcome...

Welcome to the Ridgeway School Sixth Form, or R6. I am delighted that you are considering us for your post 16 studies. We have a great deal to offer here at R6: a fantastic range of subjects, expert teachers and incredible pastoral support.

Our teachers are highly passionate about their subjects and have a wealth of knowledge to share. Not only will they teach you the academics, they’ll also be on hand to support with your future destinations; whether that be University or higher-level apprenticeships.

There are a wealth of opportunities for you to take advantage of at R6. Join a committee, take up an enrichment, perform in our CPA events, volunteer within the school – there’s lots to help you grow and develop as a person.

This booklet should help you to gain a sense of what’s on offer at R6, but please do take time to come along to our Open Evening on Thursday 12th October; speak to our staff and students and find out why Ridgeway Sixth Form could be the perfect destination for you.

We look forward to meeting you.

Zoe Smith
Assistant Principal / Head of R6





Aspire...

Our commitment: All students in R6 receive one-one advice and guidance, mentoring and opportunities to help them to prepare to apply to university, apprenticeships or for employment.

In addition however, our R6 Aspire programme sets our students apart. It runs as a weekly rota from Term 1 of Year 12 with in built individual support in both Year 12 and Year 13.

R6 Aspire focusses on those who wish to gain a place at Oxford or Cambridge, those who want to pursue a career in Medicine, Dentistry or Veterinary Medicine, those with ambition to go to a Russell group university or those applying for performance and creative courses. All of these aspirations require additional elements to an application, and we want to acknowledge and support that from the start of Year 12.

R6 Aspire will support you throughout your time in Sixth Form so that you will develop the skills you need to make a successful application including application and interview support, arranging online and in person visits, one-one mentoring and preparing you for any entrance exams.

You will build a portfolio that evidences your personal qualities and interests. Universities and employers look for people who stand out from the crowd and so you will learn how best to exhibit your skills, your energy, your abilities and your leadership. At R6 we want your aspirations to become your reality.

R6 Aspire includes:

- * Personal statement and application writing workshops
- * Practice interviews with feedback and re-interview opportunities
- * Interview and response workshops
- * Alumni guest speakers
- * University guest speakers
- * Support with entrance exams
- * Seminar role plays
- * Medic dentistry/veterinary role play assessment practice.
- * Portfolio support and guidance
- * Audition support
- * Open day preparation
- * Summer school application support
- * Work shadowing support

and a range of other activities, including university visits.



Support...

Our Commitment: Each student will be known and valued, and will be given opportunities to secure their aspirations in a supportive environment. We care about the wellbeing of our students, their families and our staff.

Mentoring: Our programmes are designed to educate and support the exploration of themes important to the lives of young adults today.

Mentoring is twice weekly as a whole group, with a one-one meeting once a fortnight and further opportunities through enrichment to attend support sessions.

Careers Guidance: R6 has a dedicated careers guidance service. Individual appointments can be booked. Regular employability and progression workshops are held throughout the year and on Immersion Days.

Enrichment: Year 12 have a designated weekly enrichment programme on a Wednesday. Activities include R6 Aspire, EPQ, HSLA, Writers Forum, Mindfulness and Sport.

Wellbeing: R6 has a wellbeing room for students to use individually or in a small group. We have a wellbeing area in the Study Centre which is up-to-date with advice and guidance. There is a student Wellbeing Committee, Wellbeing Enrichment and our mentoring programme includes two terms per year focused on wellbeing, including ideas around physical health, personal safety, guidance and advice, tolerance and diversity and mental health.

Listening Service: Our Student Support Advisor works with the school counsellor, school nurse and safeguarding team as well as within R6.

We offer a listening service to R6 students who need individual support with their mental health.

Pastoral Support: Our Heads of Year offer day to day guidance and support to students on a range of issues from their academic progress to personal welfare. We hold regular assemblies in school as well as ensure at least termly communication with parents, host parent information events and subject parents evenings. Heads of Year work closely with teaching staff to know and support student aspirations and have high expectations and belief in the potential of all students.

Safeguarding: In R6 safeguarding procedures follow whole school procedures, our staff are highly trained and experienced in safeguarding work.





A place to study...

Our Aims:

We want **our students** to be resourceful and resilient learners, willing to take risks and to challenge themselves to be the best they can be.

We ask **our staff** to embed routines in order to support student progress and to create an environment of excellence and high expectations in which aspirations become a reality.

Study Environment:

Our R6 day does not end at 3:15. The Study Centre is available for students to work in until 5pm each day if they choose to.

Students have access to laptops and their own R6 IT Suite as well as a quiet study space for individual focussed study and the main Study Centre.

Learning beyond the lessons:

All students have timetabled Independent Study sessions in the Study Centre, in which they are guided by subject staff to complete tasks to deepen their understanding of taught content and prepare for forthcoming lessons with pre-reading and flip learning tasks.

A programme of extended learning is offered in Year 13, and students in Year 12 are encouraged to attend as well.

Student run study groups have proven impactful in securing and developing understanding beyond the classroom and these are planned to continue within our school day.

Wider learning is regularly set and marked in Years 12 and 13 using Arbor.

R6 students are fortunate to have access to the digital library collection in JSTOR, making excellence in coursework and research a reality. R6 also benefit from Access It and our audiobook platform.

Support for learning:

Our R6 Staff and wider support team ensure students are offered opportunities to develop academic skills such as online research, note taking, library usage, time management and referencing.

We hold daily progress meetings and catch up sessions for students who miss deadlines or need more personalised support.



“

The two year groups merge together really well and you can guarantee there'll always be someone in the common room you can talk to - It's our own little world!

”

Sixth Form student



Advice...

Are you passionate about...	
Writing?	Then think about English Language & Literature, History, Politics, Sociology
Sport?	Take one or more of PE, BTEC Sport, Biology, Psychology, Maths
Working with people?	Consider English, Psychology, Sociology, Politics, Drama, Performing Arts
Travelling?	How about English, Geography, History, Sociology, Politics, Business Studies, Economics, Drama, Music, Textiles
The world around us?	Why not study Geography, Sociology, Biology, Psychology, History, Economics, Philosophy, Politics, Drama, Art, Graphics
The sciences?	Consider one or more of Chemistry, Biology, Physics, BTEC Science, Maths, Psychology, PE, Computer Science, IT Extended Certificate
The arts?	Any of these would be good! English, Performing Arts, Drama, Music, Graphics, Product Design, Photography, History, Art, Textiles
Design?	Suitable subjects include Textiles, Product Design, Graphics, Art, Photography, IT Extended Certificate
Different cultures?	You'd do well to look at History, Politics, English Literature, Geography, Business Studies, Philosophy, Sociology, Textiles, Art, Music, Drama



Community...

A friendly, supportive and purposeful environment enables our Sixth Formers to thrive.

Our dedicated Sixth Form Study Centre has been reburbished and designed with our students in mind with our own IT Suite and Quiet Study area.

Whether working independently or in a group, there is plenty of space for studying or relaxing. We are also proud of our very own R6 Café which sells pizzas, deli style sandwiches, paninis and more. Freshly ground coffee, hot chocolate and cold drinks are available too.

Our Sixth Form facilities support your learning, with independent study resources and laptops for students to book and use during the day. The Study Centre is open until 5pm each day for students who like to continue working in this environment

Our commitment to you:

- A dedicated mentoring programme with weekly group meetings and individual fortnightly tutorials to discuss your progress and offer support.
- Our R6 Student Support Advisor who offers a Listening Service and Study Support.
- Our own Wellbeing Room for you to take time out and relax individually or in small groups
- Our programme of enrichment offers you the chance to volunteer in the school, run your own activities, join peer run study groups, student committees and engage with academic skills sessions to enhance your skills and experience.
- Enrichment to all Year 12 students including DofE Gold Award, HSLA, EPQ, R6 Sport and Wellbeing sessions.



The Ridgeway Sixth Form **R6** Life...

Our belief: Sixth Form life is about more than academic excellence. We encourage our students to take up opportunities and take on responsibilities that will develop them into well-rounded and accomplished individuals.

Opportunities include:

- Enrichment programme
- Student led activities, student leadership and academic skills support.
- Volunteering in the school.
- Student Leadership opportunities
- Student led committees
- National Awareness celebrations
- Study Skills support
- Extra-curricular activities such as R6 Choir, R6 Sport and R6 Arts Leaders
- Biology residential field trip
- University visits
- UCAS convention
- Apprenticeship fairs
- Geography field trip
- Art exhibition
- Ski trips
- Exchange trips
- Volunteering abroad

Sixth Formers get student discounted access to The Ridgeway Leisure Centre, including the fitness suite and swimming pool.

With active sporting teams and a dynamic Sports Committee, there is plenty for the energetic to get involved with at R6.

- Year 12 v Year 13 team matches in rugby, football and netball
- Sport and Comic Relief events
- A variety of competitive and non-competitive teams
- Higher Sports Leadership Award is offered during Enrichment time

Our Student Committees in 2022 include a Wellbeing Committee, Social Committee, Arts Committee and LGBTQ+.

Students plan a series of events throughout the year and involve both Year 12 and Year 13 members in delivering these events.

Students form different relationships in R6 with their teachers. Our staff are experts in their subject areas and strive to get the best out of all students. Their dedication is recognised by our students who work with staff to achieve their goals. Knowing student aspirations and potential early in Year 12 is a crucial part of our joint work together to achieving our shared goals.





Achievements...

We are very proud of the achievements of all of our students whether they continue their studies at university or go on to secure apprenticeships or employment. Particular successes in 2023 include:



Katie

achieved

Maths A*
Physics A*
History A
EPQ A*

Now studying

Classical
Archaeology &
Ancient History

at

Oxford University



Harleen

achieved

Biology A*
Chemistry A*
Mathematics A*

Now studying

Medicine

at

Imperial College
London



Issy

achieved

Business A
Law A*
History A

Now studying

Solicitor Degree
Apprenticeship

at

Evershed
Sutherland in
London



Erren

achieved

Further Maths A
Maths A*
Computer Science
A
Applied Science

Now studying

Computer Science

at

Southampton



Matthew

achieved

Chemistry A*
Maths A*
Biology A

Now studying

Chemistry

at

Bristol University



Marie

achieved

Chemistry A
History A*
Maths A*
Further Maths A

Now studying

Maths

at

Manchester
University



Student Leadership...

Hello! We are Frankie, Harvey, Jade, and Ben (the R6 Leadership Team).

We hope to meet you on the open evening as it is an amazing opportunity to speak to us, other students and staff about what we believe makes our sixth form so successful. The transition from secondary school to Year 12 can seem like a huge leap as it brings a change in independence and responsibility, however, it is a time to really excel in the subjects you love and get a step closer to your vision. The support that we've received throughout Year 12 and into Year 13 has been incredible and continues to help us to unlock our future pathways. A benefit of R6 that sets us apart is that we build strong relationships with our teachers and the R6 team who hold us to high standards and push us to be the best we can be; so we leave as well-rounded and mature students.

Inside our community, there are a multitude of extracurricular activities to cater to each individual. This ensures we all leave with a variety of skills and fantastic experiences as well as excellent grades. This includes the talented choir, performance groups, DofE and HSLA. Some other amazing opportunities we have available to us are exchange trips, ski trips, and volunteering abroad. This year we had people travel to Nepal, Tanzania, Cambodia, and Thailand. In addition to an array of wonderful opportunities, we also receive bespoke support with our post 18 destinations. For example, we all benefit from one-to-one mentoring sessions, referencing workshops, apprenticeship application support and university fairs.

We are lucky to benefit from a range of resources within R6 such as our study centre, IT suite, the LRC and not to forget R6 café. We have dedicated space to work and benefit from subject specialists within our lessons. Our family has many vast and fantastic student-run committees that allow each and every student's voice to be heard and allow to sixth form to continue to adapt, improve, and grow. Examples of the committees are Sports, Wellbeing, Charity community, Medics and LGBTQ. We recommend speaking to our

committee heads about their experiences. Our committees also work to arrange a range of social events which we believe separates us from other colleges. These include mixers to integrate the two years to build a strong community and Year 12 vs. Year 13 sports games which everyone loves to get involved with.

We are proud of the hardworking nature of R6 – we enjoy the rigour of our subjects along with the opportunities to grow and develop as a person. We're sure that this would be a fantastic place for you to spend the next two years and we can't wait to welcome you. Please do get in touch if you have any questions.

Good luck with Year 11!

Frankie, Harvey, Jade and Ben





Aspirations...

R6 Plus combines with our subjects and extra curricular opportunities to give R6 students unique opportunities to develop skills and choose pathways that universities and employers are seeking in their applicants. Please look through the examples below. There is a combination to suit any pathway, just chat to R6 staff or students.

<p>Medicine/ Veterinary Science/ Dentistry</p>	<p>Subjects: Choose Biology, Chemistry and one other subject .</p> <p>R6 Plus: Choose a leadership pathway such as Student Leadership, Student Voice or Subject Rep. Add a community pathway: Volunteering in the Ridgeway community</p> <p>R6 Support: Interview preparation, mock assessment days, application support, work shadowing week and other opportunities, R6 Aspire.</p> <p>R6 Extra curricular: Consider the EPQ, or Gold DofE or Languages for Business</p>
<p>Sport/Sport and Exercise Science/Sport Psychology/Sport Coaching</p>	<p>Subjects: Single, Double or Triple BTEC Sport, Business Studies, PE, Psychology, Biology, Maths</p> <p>R6 Plus: Choose a leadership pathway and consider joining the Sports Committee and leading the organisation or R6 fixtures. Become a Subject Rep. Add a community pathway: Volunteering in the PE Faculty</p> <p>R6 Support: Interview preparation, work shadowing week and other opportunities, application support.</p> <p>R6 Extra curricular: Consider the HSLA or R6 Sport or Languages for Business</p>
<p>Performing Arts/ Drama/Music/Theatre Studies/Acting</p>	<p>Subjects: Performing Arts, Music, BTEC Music, English Literature, English Language & Literature, Drama, History , Art, Photography, Graphics, Politics</p> <p>R6 Plus: Choose a leadership pathway and consider joining the Arts Committee. Become a Subject Rep or Student Voice Rep. Add a community pathway: Volunteer, join R6 Radio, write for the R6 Blog, start a new group</p> <p>R6 Support: Interview preparation, application support, priority use of facilities, work shadowing, visiting speakers and R6 visits.</p> <p>R6 Extra curricular: You should consider Arts Leadership enrichment and could choose to complete the Arts Award, you could consider EPQ. School productions, Art Exhibition</p>

“ The teachers show a real commitment to teaching you and make me want to go to my lessons. ”

Sixth Form student

<p>Oxford or Cambridge</p>	<p>Subjects: Choose your subjects carefully and ensure they are related to your intended study, if you don't know what that is, choose subjects you enjoy and excel at. You may add a fourth AS subject such as Further Maths.</p> <p>R6 Plus: Choose a leadership pathway such as Student Leadership, Student Voice or Subject Rep. Add a community pathway: Volunteering in the Ridgeway community and consider running a Study Group in R6</p> <p>R6 Support: Interview preparation, mock assessment days, application support, work shadowing week and other opportunities, R6 Aspire, extra study sessions with staff for entrance exams or assessments.</p> <p>R6 Extra curricular: Consider the EPQ, or Gold DofE, or Languages for Business.</p>
<p>Humanities/Liberal Arts/Languages/ Politics/International Relations/Law</p>	<p>Subjects: Choose subjects you are interested in, and that will develop the skills relevant to your intended pathway</p> <p>R6 Plus: Choose a leadership pathway such as Student Leadership, Student Voice or Subject Rep. Join or start a committee. Add a community or study pathway: Volunteering in the Ridgeway community or running events or a Study Group. Get involved in Awareness days, months and whole school events.</p> <p>R6 Support: Interview preparation, work shadowing week and other opportunities, application support.</p> <p>R6 Extra curricular: Consider the EPQ, Debating, Languages for Business or following a passion for Arts, Sport or exploring the Wellbeing pathway.</p>
<p>Healthcare Professions</p>	<p>Subjects: Biology, Chemistry, Mats, BTEC Science (Single or Double), Sociology, Psychology, Children's Play, Learning and Development, Food and Nutrition Science, Drama, Music.</p> <p>R6 Plus: Choose a Wellbeing pathway, join the Wellbeing Committee, become a Student Voice Rep or Subject Rep. Take the Community pathway and volunteer in the Ridgeway Community.</p> <p>R6 Support: Interview preparation, work shadowing week and other opportunities, application support, local opportunities advertised, Immersion Days</p> <p>R6 Extra curricular: Consider an enrichment that will develop your team work and communication, get involved in events and national awareness days and months</p>

Our R6 experience is designed for students to not only excel in their academic subjects, but to also explore their other interests and talents. These are just some examples of how it could combine to build a portfolio of experiences and skills that make you stand out. If you are not sure of your pathway and plans yet that is what R6 Plus, R6 Enrichment and our many extra curricular, leadership and community opportunities are for. Have a look through this prospectus and see who you could become at R6.

How to choose your courses...

There are 5 things to consider when choosing which subjects to study in R6...

1. **If you have a plan for after R6, check out the facts.** If in doubt, always check with your Careers Advisor, the Sixth Form team, a university or apprenticeship provider. Call them or check on their websites.
2. **Choose subjects that you will enjoy.** Sociology, Law, Politics, Psychology and Photography are just a few of the new courses you will hear about, explore them and don't assume you know what they offer.
3. **Some degree subjects ask for specific A-levels.** This is because they cover knowledge and skills you will need later on.
4. **Certain A levels can keep your options open for the future.** These are known as facilitating subjects and include Maths, Further Maths, Biology, Chemistry, Physics, Geography and History. If you have absolutely no idea what you might like to study at university in the future, or what career you might wish to pursue, it might be worth having 1 or 2 of these A levels, especially if considering a highly rated university course.
5. **Subjects are more challenging in R6 than at GCSE** so you need to be sure what you are taking on. If you are only 'ok' at a subject at GCSE, you need to ask yourself if you will be able to keep it up at A-level.

Of course, you can contact any one of the Sixth Form team at any time. Just pop into the Sixth Form office if you are in Year 11 at Ridgeway, or give us a call on 01793 846135 or an email to smithz@ridgewayschool.com



Vocational Degrees: Thinking ahead...

Interested in a career in...	Subject Area	Required Subjects	Preferred Subjects
	Architecture	Usually Maths	Physics, Art, Maths, Computer Science, Graphics
	Computer Science & Software Engineering	None	Maths, Further Maths, Physics, Computing, Philosophy, ICT
	Education	None	Art, Technology, English, MFL, Geography, History, ICT, Maths, Music, RE, Sciences
	Engineering	Depends on area	Chemistry, Maths, Physics, Further Maths
	Law	None	Law, History, English Literature, Politics, Sociology, Psychology
	Medicine & Dentistry	Chemistry, Biology	Any other A level subject, although check individual course advice
	Nursing & Healthcare including Midwifery, Physiotherapy, Optometry	Biology or BTEC Science	Psychology, Sociology, Chemistry, Physics, PE, Maths, BTEC Science
	Veterinary Science	Chemistry, Biology	Maths, Physics, Geography



The
Ridgeway
Sixth Form

Pathways...

Pathways to your future

A level pathway

Consider this pathway if you are looking for a place at a top university or a degree apprenticeship and want to study three subjects in depth (a small number of high achieving students may study a fourth subject).

1 A level

1 A level

1 A level/BTEC

Add EPQ OR Student Leadership AND Add R6 Aspire and Volunteering alongside your academic mentoring and Independent Study periods

Combination pathway

Consider this pathway if you want to consider university, apprenticeship at any level or employment and keep your options open.

1 A level

1 A level

1 A level or BTEC/Applied subject

1 A level

1 BTEC/Applied or a Double BTEC

1 BTEC/Applied or 1 A level

Triple BTEC: Sport

Add HSLA OR Student Leadership AND Enrichment Activities and Volunteering alongside your academic mentoring and Independent Study periods

Vocational pathway

Consider this pathway if you are considering an apprenticeship or employment as main option, but may consider university in a particular subject.

Double BTEC

Double BTEC

Single BTEC/Applied

Double BTEC

Double BTEC

1 A level

1 A level

Single BTEC/Applied

Single BTEC/Applied

Triple BTEC: Sport

Add HSLA OR Student Leadership AND Enrichment Activities and Volunteering alongside your academic mentoring and Independent Study periods



Course Types & Combinations...

Course Types	
A Levels	Academically focused learning with in-depth subject focus
BTEC Extended Certificate	Practical subjects with a workload equivalent to one full A-Level
BTEC Diploma	Career focussed subjects with a workload equivalent to two full A-Levels
BTEC Extended Diploma	Highly-specific practical learning, with academic development of the theoretical aspects of the subject, equivalent to three full A-Levels

Course Combinations

With this in mind you may wish to study one of the following combinations of courses:

3 A-Levels

2 A-Levels + 1 BTEC Extended Certificate

1 A-Level + 1 BTEC Diploma

1 BTEC Extended Diploma

To supplement these combinations students may wish to study Further Maths, Core Maths or EPQ to expand your studies. We will work with current and joining students to support you in picking the best combination for you.

Applications...

Please apply to the Sixth Form by filling in the application form on our website at www.ridgewayschool.com
Or alternatively scan the QR code below to apply.

After you apply, you will receive a confirmation email.

Invites to interview will be sent to you following your application. The interview will be a chance to talk about your subject choices and why you want to join The Ridgeway Sixth Form.

We recommend students choose 3 'A' Levels or a combination of A level and BTEC courses, or perhaps 4 if including Further Maths. This will be decided in agreement with R6 staff on an individual student basis

This course of study may then be enhanced by either the Extended Project Qualification (EPQ) or Core Maths Qualification.

Any questions before interview, or anyone wishing to arrange a visit please do get in touch:

School reception: 01793 846100

Sixth Form Administrator:

Mrs S Hoyland hoylands@ridgewayschool.com



R6 Entry Requirements:

Students are required to have Grade 5s in five or more subjects including English and Maths. Students should additionally achieve the required entry grades for each subject they wish to study.

All entries to courses are at the discretion of the R6 Leaders.

Please look carefully at the individual subject pages for more information.

OCTOBER

Thursday 12th October
Open Evening 6pm-8pm
Applications Open!



NOVEMBER

Consider your options
and courses carefully.
Ask for more information from
subject areas if needed.

Book a careers guidance
appointment, speak to
R6 staff or students.

DECEMBER

Applications
remain open



JANUARY

Thursday 11th:
Application deadline.

All students who apply by
the deadline will be considered
first, applications will be
considered after this if places
are not filled.

JANUARY - MARCH

You will be
invited to a
Sixth Form
interview shortly after
submitting your
application.

MAY/JUNE

Good luck
with your exams!

OCTOBER

Look out for
Induction Day

AUGUST

Thursday 22nd August
GCSE Results Day
and
Sixth Form
Enrolment Day

SEPTEMBER

Start R6

Welcome to Year 12.
We look forward
to meeting you!

“Live your dream and realise your potential”



Courses...

Art					
Fine Art	23				
English					
English Language & Literature	24				
Design Technology					
Art/Textile Design	26				
Photography	26				
Graphic Communication	27				
Humanities					
Geography	28				
History	28				
Philosophy	29				
Maths					
Maths	30				
Further Mathematics	30				
Core Mathematics	30				
Computing					
A Level Computer Science	32				
IT Extended Certificate	32				
Performing Arts					
Drama	34				
BTEC Performing Arts	34				
BTEC Extended Certificate in Music (level 3)	35				
Social Sciences					
Business Studies	36				
Economics	36				
Law	37				
Politics	37				
Psychology	38				
Sociology	39				
Physical Education					
BTEC Extended Cert in Sport	40				
BTEC Diploma in Sport	40				
BTEC Extended Diploma in Sport	41				
Science					
Biology	42				
Chemistry	42				
Physics	43				
BTEC Extended Cert in Applied Science	44				
BTEC National Diploma in Applied Science	45				
Additional Opportunities					
CPA Ambassadors	46				
Debating & Activism	46				
Duke of Edinburgh	46				
Extended Project	47				
HSLA	47				
R6 Aspire	47				
R6 Sport	48				
Well Being	48				
Writers Forum	48				

Art

Art (Fine Art)

Minimum grade required: Art GCSE 6 and 5 in GCSE English Language
Exam Board: AQA
Course Leader: Mrs A Fair
faira@ridgewayschool.com

What will I be studying?

AQA Art A-level consists of one coursework unit and one examination unit. The A Level course builds on the experiences and course structure from GCSE.

The theme for Year 12 is 'Identity'. You will re visit the formal elements of Art with a series of workshops. There are a number of new techniques and processes involved, such as etching and lino printing. You will also develop drawing, painting and 3D skills. you will study a variety of Artists and start to develop your own visual language. You will then start your course work project 'Personal Investigation' based on a theme of your choice. This will be your main project and will include an extended essay about your Art work.

The A level Exam Unit consists of a six-week preparation project followed by a three-day exam to complete a personal response .

Where can it take me?

A Level Art and Design is highly regarded by Universities and Employers as it creates innovative, independent thinkers.

Possible career options: Advertising, Animation, Architecture, Art History, Art therapy, Ceramic art, Costume design, Fashion and Jewellery design, Film and TV, Media, Fine Art, Furniture design, Games design, Graphic design, Illustration, Interior design, Landscape architecture, Lecturing, Makeup artist, Museum Curator, Photography, Photo Journalism, Product design, Teaching, Textiles and print design, Theatre Design, Social media and app design.



“ With every decision - subject, careers, the future and general life, there is always support for us. ”

Sixth Form student

English

English Language and Literature

Minimum Grade Required: Grade 6 in GCSE English Language and 6 or above in GCSE English Literature.

Please note, unlike GCSE, A Level English students will have access to their course set texts in the exam and do not have to learn all quotations off by heart.

Exam Board: AQA

Faculty Leader: Mr M Webber

webberm@ridgewayschool.com

What will I be studying?

A Level English Language and Literature approaches language and literature in a combined way, employing a linguistic approach to help you read like a writer and write like a reader. You will be encouraged to develop as an analytical reader of literary fiction and non-fiction texts and a purposeful, precise writer of a variety of textual forms.

You will explore how texts are constructed in different contexts and for different audiences through the close analysis of a wide range of linguistic and literary techniques and concepts before applying these methods in your own writing. You will focus on how writers craft a distinctive 'voice' through the study of the stylistic features of a wide range of forms of fiction and non-fiction writing, including blogs, articles, autobiographies, plays and novels.

You will develop an understanding of how texts are constructed and how meaning is shaped and communicated to different audiences. You will be given ample opportunity to explore a range of engaging ideas and issues through the production of your own original fiction and non-fiction writing as well as the ability to critically reflect on your work through the production of a critical commentary.

Over the course of your studies, you will lay the foundation for a lifelong love of literature, a genuine appreciation of the power of language, and the ability to articulate ideas and meaning assuredly in a wide range of written forms.

A Level: English Language and Literature Assessment Overview:

Component 1: Voices in Speech and Drama (Exam 40%)

Component 2: Varieties in Language and Literature (Exam 40%)

Coursework: Investigating and Creating Texts (20%)

By studying this A Level English Language and Literature course you will:

- use linguistic and literary approaches in your reading and interpretation of texts, showing how the two disciplines can relate to each other,
- engage creatively and critically with a wide range of texts,
- explore the ways in which texts relate to each other and the contexts in which they are produced and received,
- undertake independent and sustained studies in producing original writing as part of your coursework.

Where can it take me?

A Level English Language and Literature is particularly suitable for university study in English and Creative Writing but it is also of relevance to Languages, Social Sciences, Humanities, Law and Management.

It will be invaluable for any career in which skills of communication, analysis and logic are at a premium: e.g. Management, Law, Journalism, Media, Teaching, Librarianship, Social Work, Human Resources, and industry.

“ The Teachers really know about university life and higher education courses. ”
Sixth Form student



“ The Ridgeway Sixth Form has a welcoming atmosphere and is an enjoyable place to be. It is very personal, students are able to build strong relationships with teachers. There are also plenty of school events to organise and enjoy as well as other committee to get involved in, allowing every person to have an active role and thrive in the Sixth Form. ”

Student



Design Technology

Art/Textile Design

Minimum grade required: GCSE 5 and above in Art or Textiles and 5 in English Language

Exam Board: AQA

Course Leader: Mrs K Stamp

stampk@ridgewayschool.com

What will I be studying?

Textile Design is a creative A Level exploring a range of textile media, processes and techniques, both traditional and with a modern slant. Students are required to work in one or more area(s) such as fashion design, fashion textiles, costume design, printed and/or dyed fabric and materials, interior design, constructed textiles and art textiles.

Where can it take me?

Possible career options: A Level Art Textile Design can lead to a range of careers including textiles designer, interior design, retail, fashion trade, costume designer and maker, working in television and theatre, teaching and museum work (conservation).

Possible degree options: Universities accept A Level Art Textile Design as a suitable qualification for students applying for Foundation Art and degree options including: Constructed textiles, Contemporary textiles, Costume design, Digital textiles, Fashion design, Fashion promotion/merchandising, Footwear design, Printed textiles, Sportswear design, Surface design, Textile design, Textile science and technology, Theatre design.

A Level Art Textile Design is also acceptable as a qualification to support other non Art courses.



Photography

Qualification: A2 (Linear A Level)

Exam Board: AQA

Entry Criteria: Grade 5 in Art or an Art related Course

Course Leader: Mrs M Nuevo

nuevom@ridgewayschool.com

What will I be studying?

Unit 1 (Coursework Unit) - Worth 60% of final grade.

Students will be introduced to the basics of photography through a series of extensive workshops.

- Students will be responding to the work of current photographers, as well as understanding the history of photography and it's impact on the world of Art & Design.
- Students will begin to understand the formal elements of Photography, and will carry out research that looks creatively at the ways Photographers have used theme elements within their work.
- Students will partake in workshops that will focus on digital photography, photograms, digital and physical photo manipulation.
- Students will be responding to a series of project themes within this time, to help them refine and hone their skills.

Unit 2 (Coursework Unit) - Worth 40% of final grade.

- Students will receive an exam paper with a choice of different starting points.
- Students are to select a starting point and create a mini project responding to their choice of theme. The students will create a body of preparatory work towards a final piece.
- This final piece will be created in a 15 hour exam, to be sat at the end of Y13 over 3 days.

Where can it take me?

A-Level Photography will assist with students who want to go on to study a Foundation Degree in Art, Design & Media, as well as other creative University Courses. The subject applies to the following roles in the working world: Advertisement, Online Content Creator, Web Development, Event Photographer, Marketing, Creative Director, Journalism, Freelance Photography, Wildlife Photography, Film & Media.



Design is the term we use to describe both the process and the result of giving tangible form to human ideas. Design doesn't just contribute to the quality of life; design, in many ways, now constitutes the quality of life.



Peter Lawrence, Founder, Corporate Design Foundation.

Graphic Communication

Minimum grade required: GCSE Grade 5 and above in Art, or Graphics or Product Design and 5 in English Language

Exam Board: AQA

Course Leader: Mrs M Nuevo
nuevom@ridgewayschool.com

What will I be studying?

Unit 1 (Coursework Unit) - Worth 60% of final grade.

- Students will begin by learning the concepts and formal elements behind graphic design.
- Students will develop their analytical and visual literacy skills in being able to effectively research examples of the formal elements within current Graphical Designers work.
- Students will then apply this contextual research to their own practise, constantly developing their visual language through a range of workshops, including Photoshop, printmaking, drawing & digital painting.
- Students will have the opportunity to explore various areas of Graphical Design including logos and branding, packaging, concept advertisement and illustration.

Unit 2 (Coursework Unit) - Worth 40% of final grade.

- Students will receive an exam paper with a choice of different briefs.
- Students are to select a brief and create a mini project responding to their chosen brief. The students will work towards a final piece.
- This final piece will be created in a 15 hour exam, to be sat at the end of Y13 over 3 days.

Where can it take me?

We are living in an increasingly visual world – from emojis & social media, to website and magazine layout design, graphic designers are leaving their creative fingerprints everywhere. Creativity is continuing to rank highly by employers in multiple areas of work. By specialising in Graphic Design, you will leave R6 with a portfolio of work that demonstrates this highly sought after skill.

Graphic Design is emerging as a highly important area of Art and

Design, and it is highly adaptable to a wide range of different areas of employment, including:

Advertisement, Branding & Online Content Creator, Graphic Designer, Web Development, Illustration, Concept Artist, Animation, Marketing, Social Media Content Creator, Creative Director, Branding Design, Packaging Design, Artistic Director, Interior Design, Editorial Design, Concept Artist, Movie and Film storyboard artist.

You will also have the opportunity to study areas of Art and Design in higher education, refining your creative skills even further!



Humanities

Geography

Minimum Grade Required: GCSE grade 6 in Geography if studied and Grade 5 in English Language

Exam Board: AQA

Course Leader: Miss Alex Curtis-Slater

slatera@ridgewayschool.com

What will I be studying?

Component 1: Physical geography (studies contribute to 2h30 Exam, worth 40% of A Level)

- Section A: Water and carbon cycles (12% of A Level)
- Section B: Coastal systems (12% of A Level)
- Section C: Hazards (16% of A Level)

Component 2: Human geography (studies contribute to 2h30 Exam, worth 40% of A Level)

- Section A: Global systems and global governance (12% of A Level)
- Section B: Changing places (12% of A Level)
- Section C: Contemporary urban environments (16% of A Level)

Geography fieldwork investigation (20% of A Level): This will include a three day field trip to develop knowledge of sampling methods and fieldwork skills, which will then assist students in completing an independent project about a geographical concept of their choice.

Geographical skills: Basic, investigative, ICT, graphical, cartographical and statistical to assist with all exam papers and the independent investigation.

Where can it take me?

Successful A Level Geography students are amongst the most employable people as they develop a variety of skills that apply to a wide range of jobs. The Course combines a knowledge of science and an understanding of the arts, encouraging students to challenge perceptions and think synoptically about our dynamic world. Students have to manage their own geographical investigation about a topic of their choice; this enhances independent thinking and research skills in a similar way to a university dissertation or a project in the workplace.

History

Minimum Grade Required: GCSE Grade 6 in History if studied and Grade 5 in English language. A Grade 6 in English Language needed if History was not studied at GCSE.

Exam Board: Pearson (Edexcel)

Course Leader : Mr Jon Bister

bisterj@ridgewayschool.com

What will I be studying?

Unit 1: Britain: Conflict, Revolution and Settlement 1625-1701

Unit 2: Russia in Revolution 1894-1924

Unit 3: The changing nature of warfare, 1859-1991: perception and reality

Unit 4: Coursework

This can be any area of history you want to choose, as long as historians have disagreed about it.

E.g. Was it right to drop the Atomic Bomb.

Where can it take me?

History is highly rated by all universities and provides the right skills needed for many degrees such as Law, History, Geography, RE, Psychology and Social Sciences, English and even Medicine! Studying History is the ideal training for careers in Law, Politics, Journalism, Business, Accountancy, Medicine, the Media (TV, film), Academia (Historians, Librarians, Teachers), Leisure and Tourism industries.

“ There are loads of opportunities to visit a number of different places.
The trips are always fun as well as educational. ”

Sixth Form Student

Philosophy

Minimum Grade Required: GCSE grade 5 in English and a grade 6 in RE if the subject was studied

Exam Board: AQA

Course Leader: Mrs H Clapton

claptonh@ridgewayschool.com

Course Teachers: Mrs H Clapton and Miss J Witchell

Why take Philosophy?

You may love precision; you may love opening up of the mind to see in a different way; you may love constructive arguing; you may love refusing to accept things just because someone tells you/on authority/just because others do. Any of these can be your entry point into the subject.

The Study of Philosophy compliments the study of other A Level subjects including Psychology, Sociology, Politics, History, and Law. It also provides you with a depth of knowledge and skills that opens up a number of career opportunities.

You will get a thorough grounding in the key concepts and methods of philosophy. Students will have the opportunity to engage with big questions in a purely secular context.

You will develop important skills that you need for progression to higher education. You will learn to be clear and precise in your thinking and writing. You will engage with complex texts, analysing and evaluating the arguments of others and constructing and defending your own arguments.

What will I study?

Philosophy consists of four different elements; Epistemology; Moral philosophy; Metaphysics of God; Metaphysics of mind. In these topics, you will:

- understand the main philosophical arguments within topics, through the works of philosophers, and articulate those arguments in appropriate forms, correctly, clearly and precisely
- understand the philosophical claims which are made within each topic and be able to articulate those claims correctly, clearly and precisely.
- understand the similarities and differences between the forms of

reasoning used in different philosophical content areas, including the similarities and differences between different kinds of knowledge generate responses using appropriate philosophical formats, to a range of philosophical questions. These responses must include: articulating definitions; articulating arguments and counter-arguments; and selecting, applying and evaluating appropriate material to generate their own arguments.

The A Level examination consists of two 3 hours exams weighted at 50:50.

Where can it take me?

The Philosophy A level opens opportunities for you to study this subject at a higher level, usually degree. Some of our students have used this A level to gain access to courses such as Religious Studies, Philosophy, Travel and tourism, Health and Social care, Childcare, Teaching, Uniformed Public Services and Legal studies. It opens up careers in Law, Politics, Social Work, Education or Police.



Maths

Mathematics

Minimum grade required: GCSE Grade 7
Exam Board: OCR (MEI)
Course Leader: Mrs C Horton
hortonc@ridgewayschool.com

What will I be studying?

A-level Mathematics is a course designed to build on topics covered at GCSE such as algebra, co-ordinate geometry, trigonometry and probability. New topics introduced in the course include: sequences and series, calculus, Newton's laws of motion and statistical hypothesis testing.

The content is structured as below.

Pure: 50%

Statistics: 25%

Mechanics: 25%

Where can it take me?

The course is designed to support the mathematical techniques and knowledge needed for many other subjects including Physics, Engineering, Chemistry, Biology, Economics and Psychology.

Further Mathematics

Minimum Grade Required: GCSE grade 7 and studying A Level Maths
Exam Board: OCR (MEI)
Subject Leader: Mrs C Horton
hortonc@ridgewayschool.com

What will I be studying?

Further Mathematics provides a great opportunity for enthusiastic mathematicians to broaden and deepen their subject knowledge. The additional content will include matrices, complex numbers, further calculus and algebraic techniques as well as extending your understanding of statistics and mechanics and introducing a new branch of mathematics, decision maths. The content you study will vary depending on whether you study the further maths course for both years as follows

The AS course is equally weighted in three topics: Pure, Statistics and Modelling with Algorithms

In the A2 course we will continue to learn more Pure content and will introduce Mechanics as a fourth module. The courses in the second year are weighted as follows.

Pure: 1/6

Stats: 1/6

Modelling with algorithms: 1/6

Mechanics: 1/6

Where can it take me?

The course is designed to appeal to those who are very able at and enjoy maths and those who are considering a mathematics, engineering or computing related degree.

Core Mathematics

This is a one year level 3 certificate with the same UCAS points as an AS.

It is a requirement for all students studying Biology or Chemistry who have not chosen A Level Maths. It will also support students who are studying subjects with a significant mathematical or statistical content such as Geography, Economics, Business Studies BTEC Science and Psychology
Minimum grade required: GCSE Grade 5
Exam Board: AQA Mathematical Studies (Option 2a)

Subject Leader: Mrs C Horton
hortonc@ridgewayschool.com

What will I be studying?

Core Maths builds on the mathematical skills studied at GCSE but with a focus on using and applying maths to solve problems drawn from other subjects, work and real life. This includes looking at Income Tax, National Insurance, Student loans and mortgages as well the statistical techniques used in other subject areas.

Where can it take me?

Employers from all sectors recognise the need for high levels of budget management, interpretation of statistical measures and problem -solving skills. Core Maths is recognised by Universities as a supporting subject for courses that have mathematical content such as Medicine, Sciences, Psychology and Nursing and will often lead to a reduced offer.

“

The Ridgeway School & Sixth Form allows you to be independent but provides a stable support system so you can get the most out of your lessons. Sixth Form becomes like your family within school and it's a really friendly environment to be in. When it came to picking a college, there really was no other choice.

”

Sixth Form Student



Computing

A Level Computer Science

Minimum grade required: Computer Science Grade 6. Grade 5 in Maths and English Language
Exam Board: OCR
Course Leader: Mr C Adams
adamsc@ridgewayschool.com

What will I be studying?

The new qualifications will be focused on programming and emphasise the importance of computational thinking as a discipline. It will inspire and challenge students to apply the knowledge they gain with the creative and technical skills they acquire.

The Units

01 Computing Systems (40%):

- The characteristics of contemporary processors, input, output and storage devices.
- Software and software development
- Programming
- Exchanging data
- Data types, data structures and algorithms
- Legal, moral, ethical and cultural issues.

02 Algorithms and Programming (40%):

- There'll be a short scenario/task contained in the paper, which could be an algorithm or a text page-based task, which will involve problem solving. Other areas include:
 - Elements of computational thinking
 - Problem solving and programming

- Algorithms.

03 Programming Project (20%)

- Students select their own user-driven problem and have to develop their own solution in a programming language of their choice.

Where can it take me?

Alongside being an excellent A Level for students interested learning more about problem solving, programming and concepts around computer science.

It is especially good preparation for students looking to:

- Study in a computer science based subject beyond A Level.
- Move into an apprenticeship in a computer science based industry, such as Cyber Security.
- Pursue a career that needs the ability to efficiently solve problems.

PLEASE NOTE:
Either A Level
Computer Science or
the IT Extended
Certificate will run in
September 2024.
Decisions will be
made dependent on
the cohort.

IT Extended Certificate

Minimum grade required: Computer Science Grade 6. Grade 5 in Maths and English Language
Exam Board: Pearson (Edexcel)
Course Leader: Mr C Adams
adamsc@ridgewayschool.com

What will I be studying?

The BTEC Extended Certificate is designed to provide a specialist work-related qualification in Information Technology. This is a two year course that cannot be dropped at the end of Year 12. You will be assessed throughout the course in assignments, tasks and a written exam.

Year 12

Unit 1: Information Technology Systems
Unit 2: Creating Systems to Manage Information

Year 13

Unit 3: **Using** Social Media in Business
Unit 6: Website Development

Where can it take me?

The IT BTEC Extended Certificate gives you the knowledge, understanding and skills that are needed to prepare you for employment in an IT or Business related career.

This course can also be used for access to higher education.

This is a Level 3 qualification, equivalent to one A level.

“ The facilities in the IT department are great, in fact everything here is aimed for a student to be successful in all their subjects. ”

Sixth Form Student



Music & Performing Arts

Drama

Minimum grade required: Grade 5 in Drama if studied. Grade 5 in English Language.

Exam Board: Pearson (Edexcel)

Course Leader: Mrs R Jankinson
jankinsonr@ridgewayschool.com

What will I be studying?

A Level

Unit 1: Devising

This unit requires the creation of a unique and original piece of theatre from a stimulus provided by the school. This will be performed to an invited audience.

Unit 2: Theatre Text in Performance

Students are required to take part in a performance of a professionally published play and to perform a monologue or duologue. Both performances take place in front of an external examiner and an invited audience.

Unit 3 Theatre Text in Context

This is a written examination based on the exploration of two set texts and the review of a live piece of theatre. One text will be practically explored from the perspective of a performer and a designer. The second text will require students to come up with director's concept for a contemporary audience in light of a practitioner.

Where can it take me?

"Not everyone is going to be an actor, but nowadays everyone needs Drama skills in one form or another. This is the age of the presentation where products and ideas are sold in a competitive marketplace by the strength of the presenter and his/her powers of delivery. The scientist, the business executive, the engineer, the bank manager, the retail executive, the designer; none are exempt." Jenni Whittaker, Chief Examiner.

BTEC L3 Extended Certificate in Performing Arts

Minimum grade required: Grade 5 in Performing Arts if studied.

Exam Board: Pearson (Edexcel)

Course Leader: Mrs R Jankinson
jankinsonr@ridgewayschool.com

What will I be studying?

"The thing about performance, even if it's only an illusion, is that it is a celebration of the fact that we do contain within ourselves infinite possibilities."

A BTEC in Performing Arts gives students the opportunity to acquire skills in three disciplines; dance, drama and music. This course is designed for students who wish to follow a career in any aspect of performance.

The course will provide opportunities for the students to be aware of and to develop personal qualities of leadership, responsibility, commitment and teamwork in a range of practical and academic situations. The BTEC course aims to build upon the foundations of the Music, Drama and Level 2 Performing Arts curriculum.

Where can it take me?

This course provides an excellent grounding for those students who wish to go into careers such as Music Entertainment, Singing, Performance Support and Theatre. Students who wish to go on to study within Higher Education are able to gain identical UCAS points as with traditional A Level pathways and could go on to study degrees in Drama, Dance and Music.



Outstanding!! The word does not do justice to the performance this evening.

Brilliant, amazing phenomenal... absolutely superb!

Parent





If you had told me three years ago I would be on stage in a main role singing and dancing, I would never have believed you. The things I have done have taught me that it's ok to love music and performing. I have been inspired to study and become a Music Teacher.

Sixth Form student



BTEC - Extended certificate in Music (Level 3 BTEC)

Minimum grade required: Grade 5 in Music GCSE if studied
Exam Board: Pearson (Edexcel)
Course Leader: Mrs R Jankinson
jankinsonr@ridgewayschool.com

What will I be studying?

Units include:

1. Ensemble Performance
2. Professional practice in the music industry
3. Composing Music

The course is equivalent to A Level.

More suited for students with an interest in practical music making and technology. This course is flexible and can be adapted to fit student interest.

**** Students are invited to discuss the course most appropriate to them.***

Where can it take me?

Music is accepted for courses at universities and colleges of higher education. Music Colleges will require a high standard of performance on first instrument. Music will allow you to access careers in publishing, media, recording, arts administration, performing, music therapy and teaching.

Where can it take me?

A Level Music is accepted for courses at universities and colleges of higher education. Music Colleges will require a high standard of performance on first instrument. Music will allow you to access careers in publishing, media, recording, arts administration, performing, music therapy and teaching.



Social Sciences

A Level Business

Minimum Grade Required: GCSE grade 6 in Business (if studied) with at least a 5 in English Language and Maths

Exam Board: AQA

Course Leader: Mrs L Dunne
dunnel@ridgewayschool.com

What will I be studying?

The course provides an excellent insight into how businesses perform and are managed. Students understand how businesses market their products or services, the logistics of getting products to market, how businesses are financed and the human resources required to make a business a success. Students investigate and research real world examples looking at both small local businesses and large multinational businesses developing their skills to analyse and interpret data. They must make substantiated conclusions and recommendations on the actions a business should take in the future. The exams require students to make recommendations for businesses which are included in case studies in the exam and to justify the reasons for their opinion.

Where can it take me?

Business students often continue the subject at university and have found employment in insurance, financial services, retailing and management.

How am I assessed?

The assessment is 3 exam papers each 2 hours in length examined at the end of the second year of study. There is a mixture of multiple choice questions as well as longer essay style questions.

A Level Economics

Minimum grade required: GCSE grade 6 in Economics (if studied) with at least a 5 in English Language and Grade 6 in Maths

Exam Board: AQA

Course Leader: Mrs L Dunne
dunnel@ridgewayschool.com

What will I be studying?

Economics has never been so prevalent since the global economic recession of 2008 where unemployment grew, and interest rates reached the lowest ever recorded and more recently with Brexit. In the study of Economics the course looks at both macroeconomics how a whole economy interacts, and microeconomics how the forces of supply and demand govern a market. Within the course there is a focus on applying the knowledge gained to real world contexts to understand the events happening around us and analysing and evaluating the effects of policy changes on a range of economic indicators. Students must also use previous economic history to help formulate and develop arguments for future policy making.

Where can it take me?

Economics A Level develops key skills of analysis and evaluation that are highly sought by universities and employers. Statistically, economics graduates are among some of the highest paid workers in the UK in many sectors including investment banking, insurance and marketing.

How am I assessed?

The assessment is 3 exam papers each 2 hours in length examined at the end of the second year of study. Paper 1 is focused on the microeconomics, paper 2 on the macroeconomics and paper 3 on a case study involving both sides of the course. There is a mixture of multiple choice questions as well as longer essay style questions. Which will require data interpretation and use of real world examples.



When I was looking for somewhere to study my A-Levels, I'd never really considered going to a Sixth Form at a different school. However, when I visited The Ridgeway at the Open Evening, it felt like the right place for me. The family atmosphere was really welcoming and the teachers were inspiring!



External student

Law

Minimum grade required: GCSE grade 5 in English Language and Grade 4 in Maths

Exam Board: AQA

Course Leader: Mr A Northcott

northcotta@ridgewayschool.com

What will I be studying?

Candidates will be studying the law from its creation to its application. They will gain an understanding of how laws are created and the influences on this as well as the people and professionals involved in its application. From this they will move to the application of laws relating to Assault, Battery, ABH and GBH, gaining problem solving and analytical skills along the way. This will be supplemented by the study of civil law and the Tort of Negligence, covering when a duty of care is owed and how this duty may be breached.

In the second year, the students will further their criminal law knowledge by exploring Murder and Manslaughter whilst also looking further at Negligence to understand claims for psychiatric damage and the vicarious liability of employers. Finally, gain an understanding of the rules surrounding contracts. This will cover formation, breach and discharge of contracts giving students knowledge they can use in their day to day life.

Year 1: The English Legal System, Contract/Human Rights Law and Tort.

Year 2: The English Legal System, Criminal Law.

Where can it take me?

Study at A Level provides a useful background for the further study of law as a main subject or subsidiary part of a degree. It also provides excellent preparation for the world of business, the emergency services, local government agencies and non-government agencies. Law is also beneficial for developing problem solving, analytical, writing and communication skills that are greatly beneficial in many areas.

Politics

Minimum grade required: GCSE grade 5 in English Language and a Grade 5 in History if the subject was studied.

Exam Board: Pearson (Edexcel)

Course lead: Miss H Buttery

butteryh@ridgewayschool.com

What will I be studying?

Year 12

Unit 1 - **People and Politics:** Democracy and rights in the UK, Elections, Political Parties, Voting behaviour and the role of the Media

Political Ideas: Liberalism, Conservatism, Socialism

Unit 2 - **Governing the UK:** The UK Constitution, Law in the UK, Parliament, the role of the Prime Minister and Cabinet

Political Ideas: Nationalism

Year 13

Unit 3 - **Global Politics:** Human rights, Poverty, Global Governance, the United Nations and Regional groups, the Environment, Conflict, International law & the impact of globalisation

Where can it take me?

Politics is a Social Science and is useful for many courses at university including Law, Economics, History, Sociology, Politics, English, Philosophy, Journalism and International Relations. Politics is useful for careers in law and apprenticeships, business, local government, the civil service, journalism, media, charity, international organisations and others.

Who should study Politics?

Politics works particularly well with History, Economics, Sociology, Philosophy, Law, Geography and Maths. However, students who are interested in current affairs and have an interest in the world, society and people will do well. Students should have an interest in developing ideas and opinions about the issues affecting our lives.

How am I assessed? 3 Exams each worth 84 marks (33%)

Unit 1: 2 hour exam: an essay, a source question, an ideas essay question

Unit 2: 2 hour exam: an essay, a source analysis question, an ideas essay question

Unit 3: 2 hour exam: two short analysis questions, two essay questions

Social Sciences

Psychology

Minimum grade required: GCSE grade 6 in English Language, 5-5 in Science or a 5 in Biology and 5 in Maths.

Exam Board: AQA 'A'

Course Leaders: Mr M Halsall
halsallm@ridgewayschool.com

What will I be studying?

Psychology is the science of human nature and experience. It involves the study of the mind and behaviour, and it appeals to the sort of enquiring mind that would like to examine possible answers to the following sorts of questions:

- 'Why do people obey orders, even if in some cases it means committing murder?'
- 'Why do we find some people more attractive than others?'
- 'What causes our love of celebrity culture?'
- 'Why do people develop phobias of certain objects/situations and where do these come from?'
- 'Does chocolate really make us happy?'

In Psychology, experiments are carried out to find out the causes of human behaviour. During a typical psychology class, you will be given a theory, examine the evidence which supports or contradicts the theory, and then evaluate both to come to a conclusion. Often you will have the opportunity to take part in an experiment yourself! This will help you address one of the key debates within psychology; 'Is psychology a science?'

Where can it take me?

It combines well with all other subjects, in particular Sociology, Biology, PE & Sports Studies and Health & Social Care. The A Level is useful for specific careers in psychology e.g. sports psychology, educational psychology, but it is also useful and relevant for a range of others including personnel management, social work, marketing, advertising and teaching. It is insightful qualification for any career involving working with people.



Sociology

Minimum grade required: GCSE Grade 5 or above in English Language. Humanities and Social Science based GCSEs are desirable.

Exam Board: AQA

Course Leader: Mr M Halsall
halsallm@ridgewayschool.com

What will I be studying?

Sociology is the study of society and the social groups within it. It is a fascinating and illuminating Course that will give you a critical insight and understanding of the changing society in which we live, and how its structures impact on our individual behaviours, attitudes and opportunities. It will equip you with the ability to critically question and understand the world around you as well as developing a strong awareness of the different factors and influences that shape human behaviour.

Sociology provides a very broad and diverse range of topics in its study. It looks at the components of society in great depth and as such develops an informed understanding of the world we live in.

A Level Sociology Assessment Overview:

Paper 1: Education with Theory and Methods (2 hour exam)

Paper 2: Topics in Sociology: Families and Households + Beliefs in Society (2 hour exam)

Paper 3: Crime and Deviance with Theory and Methods (2 hour exam)

Sociology asks searching questions about our world and tries to explain the way it is. Sociologists attempt to answer questions like:

- 'What shapes our identity?'
- 'How can some crime be seen as beneficial to society?'
- 'Who has power in society?'
- 'How does social class affect your life chances?'
- 'How influential is the media?'
- 'What beliefs underpin and shape our worldviews?'
- 'Why do people obey, or break, rules?'
- 'To what extent does society control us?'
- 'Do we have free will to act as we choose?'
- 'Why is there inequality in society?'
- 'Is identity fixed or does it change over time?'

- How can science, religion or ideology shape our understanding of the world?
- Why are some people more likely to be criminal than others?

Where can it take me?

It combines well with many other subjects, especially Psychology, Politics, History, Philosophy and Ethics, Health and Social Care and Geography. Sociology is useful for a variety of careers e.g. Social Work, Journalism, Police Work, Criminology, Law, Marketing, Business and Personnel, Nursing and Teaching – basically any career that involves an understanding of people, society and how we behave.



Physical Education

BTEC L3 Extended Certificate in Sport

Equivalent to 1 A-Level

Minimum grade required: 5 in English Language and 5 in PE/Sport if studied.

A previous PE/Sport qualification is not essential but an interest in sport/physical education is.

Exam Board: Pearson

Course Leader: Mrs R Hill

hillr@ridgewayschool.com

What will I be studying?

- Anatomy and physiology of sport (examination)
- Fitness training and programming examination)
- Sport event organisation

And one other from:

- Sports Leadership
- Application of fitness testing
- Practical sports performance

Students will be assessed through a number of practical based activities and theoretical assignments, and two external exams taken in the first year of the course.

Where can it take me?

The BTEC Extended Certificate in Sport (Level 3) allows learners to gain a nationally recognised vocational qualification. The course enables the learners to improve their understanding of their sport and strive for performance excellence. It is also a way to investigate the sports industry through health, fitness and sports coaching. It is designed to support progression to higher education when taken as part of programme of study that includes other appropriate qualifications.

What subject options could I take with Sport?

Applied Business Studies and BTEC Science will compliment the BTEC Extended Certificate in Sport, well other combinations are also suitable.

BTEC L3 Diploma in Sport

Equivalent to 2 A-Levels

Minimum grade required: 6 in English Language and 5 in PE/Sport
A previous PE/Sport qualification is not essential but an interest in sport/physical education is.

Exam Board: Pearson

Course Leader: Mr M McMeeking

mcmeekingm@ridgewayschool.com

What will I be studying?

- Anatomy and physiology of sport (examination)
- Fitness training and programming examination)
- Investigating business in the sport industry examination)
- Sport event organisation
- Professional development in the sports industry
- Application of fitness testing
- Rule, regulations and officiating in sport
- Sports leadership
- Skill acquisition in sport

Students will be assessed through a number of practical based activities and theoretical assignments, and three external exams taken in the first year of the course.

Where can it take me?

The BTEC National Diploma in Sport (Level 3) allows learners to gain a nationally recognised vocational qualification. The course enables the learners to improve their understanding of their sport and strive for performance excellence. It is also a way to investigate the sports industry through health, fitness and sports coaching. Designed to support progression to higher education and employment when combined with other suitable qualifications.

What subject options could I take with Sport?

Applied Business Studies and BTEC Science will compliment the BTEC Extended Certificate in Sport, well other combinations are also suitable.

“ I have thoroughly enjoyed my first year of Sixth Form. The best thing about it is the ability to be as independent as you want but also being able to get support from both subject teachers and the Sixth Form leadership team. ”

Year 13 student

BTEC L3 Extended Diploma in Sport

Equivalent to 3 A-Levels

Minimum grade required: 6 in English Language and 5 in PE/Sport. A previous PE/Sport qualification is not essential but an interest in sport/physical education is.

Exam Board: Pearson

Course Leader: Mr M McMeeking
mcmeeekingm@ridgewayschool.com

What will I be studying?

- Anatomy and physiology of sport (examination)
- Fitness training and programming examination)
- Investigating business in the sport industry examination)
- Development and Provision of Sport and Physical Activity (examination)
- Sport event organisation
- Professional development in the sports industry
- Application of fitness testing
- Rule, regulations and officiating in sport
- Sports leadership
- Skill acquisition in sport
- Practical sport performance

Coaching for performance

- Research methods in sport
- Exercise, health and lifestyle

Students will be assessed through a number of practical based activities and theoretical assignments; four external exams will be taken over the course of the two years.

Where can it take me?

The BTEC National Extended Diploma in Sport (Level 3) allows learners to gain a nationally recognised vocational qualification which can lead to a number of employment options as well as being recognised by all universities as a route for many degree courses.

What subject options could I take with Sport?

As this course is equivalent to 3 A-Levels, we suggest that you seek opportunities for work experience alongside this course.



Science

Biology

Minimum Grade Required: GCSE grade 7 in Biology and another science or 7-7 in combined science, a grade 5 in English Language and grade 6 in Maths.

Exam Board: OCR

Course Leader: Miss M Tuck

tuckm@ridgewayschool.com

What will I be studying?

Biology is a subject which is never out of the news. Just think of gene technology, global warming, endangered species, GM foods, transplants, B.S.E., cloning; the list is endless and is growing every day. Biology can 'stand alone' as a Science subject amongst more 'Art' orientated subjects and is complementary to Geography, Psychology, Sociology and Sports Science, as well as Chemistry, Physics and Maths.

There is a Biology field trip to Swanage and Studland Bay where you will be carrying out a full investigation which contributes to a certificate of practical skills.

In addition to the A level qualification we would expect all students to gain the 'Practical Endorsement in Biology'.

This will be embedded throughout the course building up a Lab book which will evidence the practical skills you have developed over two years of study. This will give an indication to universities of your competencies in the laboratory.

All practical skills will also be examined through the written papers.

A Level

Module 1: Development of practical skills in Biology

Module 2: Foundations in Biology including Cell structure and Biological molecules

Module 3: Exchange and Transport

Module 4: Biodiversity, Evolution and Disease

Module 5: Communication, homeostasis and energy

Module 6: Genetics, evolution and ecosystems

Where can it take me?

Biology provides an excellent basis for higher education courses from medicine to marine biology and physiotherapy to psychology. It will provide you with a wide range of useful skills which are transferable to any subject or field of work.

Chemistry

Minimum Grade Required:

GCSE Grade 7 in Chemistry and another science or 7-7 in combined science and Grade 6 in Maths.

Exam Board: OCR - GCE Chemistry A

Course Leader: Miss C Gallagher

gallagherc@ridgewayschool.com

Why A-Level Chemistry?

From baking a cake to recharging a mobile phone, chemistry is involved in everything we do; and our lives are inextricably influenced by many aspects of chemistry. Chemistry will continue to be at the forefront of responding to the needs of society; with chemists central to making advances in designing new materials, efficient energy use, drug development, and technology, to name but a few.

A level Chemistry courses cover a wide variety of basic concepts such as the structure of the atom; the interaction of matter and energy; how to control reactions; patterns in the Periodic Table; understanding carbon-based molecules.

The OCR A Chemistry specification splits the content into 6 modules: (1) Development of practical skills in chemistry (2) foundations in chemistry (3) Periodic table and energy (4) Core organic chemistry (5) Physical chemistry and transition metals (6) Organic chemistry and analysis.

What will I be studying?

Year 12 — This will give you an insight into the contemporary world of Chemistry, covering aspects such as minerals, medicines, and polymers. Practical skills are integrated throughout the course.

Year 13 - You will continue to learn about Chemistry in a modern society, covering aspects such as, analytical techniques, transition metals and organic synthesis. Emphasis throughout the course is on developing knowledge, competence and confidence in practical skills and problem solving.

Possible Career options?

Studying A Level Chemistry supports other science subjects and can also complement a number of arts subjects. Chemistry is essential for careers in medicine, pharmacology and veterinary science. It is recommended for nursing, physiotherapy, forensics, environmental or biological sciences. her career opportunities such as law, finance, engineering and teaching.



Physics

Minimum Grade Required: GCSE grade 7 in Physics and another science or 7-7 in combined science and grade 6 in Maths. Students must also study A-Level Maths along side.

Exam Board: OCR

Course Leader: Mr P Kench

kenchp@ridgewayschool.com

Is Physics for you?

Do you want to investigate the limits of space, the beginning of time and everything in between?

How about understanding how the technology around you works? Want to save the planet or maybe just help people get better when they are ill? Or maybe you don't care about any of this and just want to earn lots of money?

Well it doesn't really matter. Whatever you do the knowledge and skills you gain by studying physics will be useful. Physics is more than a subject - it trains your brain to think beyond boundaries.

What will I be studying?

Physics is exciting! Think of the number of applications that depend on a knowledge of physical principles for their development; space flight, telecommunications, internet, the LHC at CERN, theme parks, the list is endless. We'd all be a bit lost without physics. All the gadgets that we take for granted like mobile phones and laptops wouldn't exist. Physicists are constantly making new discoveries that directly impact our everyday life.

Year 12

Year 12 Physics combines theory with a great deal of practical work, enabling you to apply your knowledge to our modern technological society.

Year 13

In Year 13 you will start to see how the ideas that you learnt at GCSE work together and begin to grasp the universal principles that apply to everything from smallest particles to the largest galaxies.

Where can it take me?

Physics is complementary to most other subjects, especially Maths, Biology, Chemistry, Technology, Geography, ICT, Economics, Art and Graphics. Knowledge of Physics and skills associated with it are much in demand in many careers, such as Engineering industry-related careers, Medicine, Veterinary Science, Management and Analysis in Business and Finance, as well as in Education and Scientific research.

Science

BTEC L3 Extended Certificate in Applied Science

Minimum Grade Required: GCSE grade 5-5 in Combined Science or 2 grade 5s in separate science, grade 5 in English and grade 5 in Maths. **Exam Board:** Pearson (Edexcel)

Course Leader: Miss L Peddle
peddlel@ridgewayschool.com

The UK is currently regarded as a world leader in sectors including renewable energy, space, low carbon, pharmaceutical, utilities, automotive, agri-food and bioscience. **The BTEC Level 3 National Extended Certificate in Applied Science** is designed to train learners to fill associate or 'para' professional and skilled technician roles in a number of sectors, including: health care, oil, gas, electricity, chemicals, pharmaceuticals, and transport equipment. Learners develop the knowledge, understanding and skills required by the sector, including essential employability skills, and apply them in real work contexts.

Course Information

The Pearson BTEC Level 3 Extended Certificate in Applied Science is an Applied General qualification, equivalent in size to **one** A level. The course covers a core of knowledge by studying areas in the field of:

- Fundamentals of science
- Scientific investigations
- Scientific practical techniques
- Applications into higher education and industrial techniques

It also provides extensive opportunity to study in more depth a range of different modules including:

- Principles and application of Science 1
- Practical Scientific Procedures and Techniques
- Science Investigative Skills
- Human Regulation and Reproduction

Assessment

Assessment is specifically designed to fit the purpose and objective

of the qualification. It includes a range of assessment types and styles suited to vocational qualifications in the sector. There are three main forms of assessment: external exam, internal coursework and synoptic practical work.

Links with Industry

As the qualification is designed in close collaboration with industry and is supported by the Sector Skills Council (SSC) for the sector, Cogent. A range of professional organisations/employers in the sector have also confirmed their support the course and it is a highly-respected route for those who wish to move into employment in the sector, either directly or following further study.

Higher Education

The Level 3 in Applied Science also provides a well-established route into a variety of specialist Higher Education (HE) courses in this sector and beyond. A number of Universities have confirmed that this this qualification in Applied Science fulfils their entry requirements when achieved alongside other qualifications.



BTEC Level 3 National Diploma in Applied Science

Minimum Grade Required: GCSE grade 5-5 in Combined Science or 2 grade 5s in separate science, grade 5 in English and grade 5 in Maths. **Exam Board:** Pearson (Edexcel)

Course Leader: Miss L Peddle
peddlel@ridgewayschool.com

The UK is currently regarded as a world leader in sectors including renewable energy, space, low carbon, pharmaceutical, utilities, automotive, agri-food and bioscience. **The BTEC Level 3 National Diploma in Applied Science** is designed to train learners to fill associate or 'para' professional and skilled technician roles in a number of sectors, including: health care, oil, gas, electricity, chemicals, pharmaceuticals, and transport equipment. Learners develop the knowledge, understanding and skills required by the sector, including essential employability skills, and apply them in real work contexts.

Course Information

The Pearson BTEC Level 3 National Diploma in Applied Science is an Applied General qualification, equivalent in size to **two** A levels. The course covers a core of knowledge by studying areas in the field of:

- Fundamentals of science
- Scientific investigations
- Scientific practical techniques
- Applications into higher education and industrial techniques

It also provides extensive opportunity to study in more depth a range of different modules including:

- Principles and application of Science 1
- Practical Scientific Procedures and Techniques
- Science Investigative Skills
- Laboratory Techniques and their application
- Principles and application of Science 2
- Investigative project
- Physiology of Human Body Systems

- Human Regulation and Reproduction

Assessment

Assessment is specifically designed to fit the purpose and objective of the qualification. It includes a range of assessment types and styles suited to vocational qualifications in the sector. There are three main forms of assessment: external exam, internal coursework and synoptic practical work.

Links with Industry

As the qualification is designed in close collaboration with industry and is supported by the Sector Skills Council (SSC) for the sector, Cogent. A range of professional organisations/employers in the sector have also confirmed their support the course and it is a highly-respected route for those who wish to move into employment in the sector, either directly or following further study.

Higher Education

The Level 3 in Applied Science also provides a well-established route into a variety of specialist Higher Education (HE) courses in this sector and beyond. A number of Universities have confirmed that this this qualification in Applied Science fulfils their entry requirements when achieved alongside other qualifications.



Additional Opportunities

CPA Ambassadors

Course Leader: Mrs R Jankinson
jankinsonr@ridgewayschool.com

This is an enrichment activity that allows you to get Creative!

You don't have to be studying an Arts Subject to take part, in fact you may be doing the complete opposite but have always wanted to dabble with a paint brush, or love designing clothes or secretly wish you could sing like Adele. If so, this is the enrichment for you.

Through exploring creative projects, you will naturally become an Arts Leader throughout the school and could become involved in performances and workshop activities for younger students so this might also be an activity to consider if you aspire to teaching at a later date.

We hope you will work closely with the Student Committees to plan and host events for R6.

There is the possibility of achieving an Arts Award for this enrichment but you don't have to, you may wish to participate purely for the Creative Buzz!

Debating and Activism

Course Leader: Mr P Burtwell
burtwellp@ridgewayschool.com

What will I be studying?

In the R6 Debating Society you will **learn how** to debate following the rules of both the Parliamentary format and the Oxford format.

We will **research and debate** topics that you suggest, and topics that relate to the world in which we live, affecting our lives today.

Together we will **develop ideas and opinions**, as well as **skills and confidence** looked for by university and employers.

We will **have fun**, compete and award prizes each term!

Great for students of Politics, Philosophy, Sociology, Drama, History, English and Law.

ALTHOUGH... *No entry requirements!
*Open to all!

Duke of Edinburgh Award

Gold Award Leader: Mr H Bessant
bessanth@ridgewayschool.com

The Duke of Edinburgh Award is not just about completing expeditions it allows students to participate in various activities. The four main areas covered are Skills, Physical Activities, Volunteering and including Expeditions.

Completion of the Award will help give you the skills, confidence and a view on life that everyone is looking for, from employers to colleges and universities. The Award recognises commitment, endeavour and a capacity for teamwork, whether that be in newly discovered activities ahead or things you already do. In completing the award, you'll people's lives and your community, be fitter and healthier, make new friends and have memories to last you a lifetime.

As well as making a difference to others, you will also visit St James' Palace, to receive your award from a member of the Royal Family.



Extended Project

Exam Board: AQA
 Course Leader: Mr N Cairns
 cairnsn@ridgewayschool.com

What will I be studying?

This AQA Level 3 course is an academic enrichment qualification that gives you a chance to take control of your studies. You will develop the essential research, analytical, and essay writing skills that will enable you to thrive and succeed at university. You will develop time management skills, the ability to plan and organise your work load, how to collate and evaluate research sources, and how to develop critical conclusions. You can choose to explore a further aspect of a subject you'll be studying, or simply choose a topic that you have a personal interest in. The finished project can be a written report, a performance, a piece of art, a CD or DVD, or even computer software.

Where can it take me?

The Extended Project is excellent preparation for university (particularly when your project topic relates directly to the subject you intend to study) and is highly regarded as evidence of your ability to work independently to an advanced standard. You will demonstrate that you can work independently, undertake research, manage large amounts of information, and produce a detailed academic report.

28 UCAS points are awarded for the Extended Project Qualification and also many universities potentially offer reduced grade offers based on a quality EPQ achieving at least an A.

HSLA (Higher Sports Leadership Award)

Higher Sports Leadership Award
 Course Leader: Mr M McMeeking
 mcmeekingm@ridgewayschool.com

What will I be studying?

The aim of this course is to produce responsible, motivated and confident young leaders who can lead safe and enjoyable sporting activities, and also to encourage young people to get involved in organising and assisting with the provision of sport in the community. The Sports Leaders UK Level 3 Award in Higher Sports builds upon the leadership skills and experience gained through the Level 1 Award in Community Sports Leadership.

This course gives students the opportunity to learn new skills, to work with specialist community groups, and is of value to all those who wish to further develop their coaching skills.

The course is taught over 2 years (Y12 and Y13) 1 lesson per week. Students are rewarded for their commitment to coaching and volunteering and can log hours to achieve excellent awards.

As an accredited course, the HSLA is worth UCAS points.

Where can it take me?

As it is an accredited course, you will officially qualify as a Community Sports Leader, with your name being registered on the Sports Leaders UK register, and it provides a common foundation for the Coaching Schemes of the National Governing Bodies of Sport.

R6 Aspire

Course Leader: Miss S Collins
 collinss@ridgewayschool.com

R6 Aspire provides students with an opportunity to fully prepare for post 18 destinations – the programme will:

1. Support in transition and applications to HE/apprenticeships.
2. Increase awareness of post-18 opportunities.
3. Support development of necessary skills for continued high performance
4. To hear from experts themselves

The sessions will cover a variety of topics such as: Russell Group Universities, Conservatoires, Portfolios, Interview techniques, Oxbridge support and the application processes. It will be complemented by an array of external speakers and seminars.

Additional Opportunities

R6 Sport

Course Leader: Mrs R Hill
hillr@ridgewayschool.com

R6 sport provides a relaxed, inclusive environment for students to enjoy the leisure facilities at R6. Make use of the gym, organise a team sport, work on an individual pursuit – the choice is yours. We all know the benefits of exercise and R6 sport provides a regular slot for students to do what they enjoy.

Well Being (Enrichment)

Course Leader: Mrs A Midson
midsona@ridgewayschool.com

This group gives students the opportunity to step away from their usual routine in school to discuss certain topics and reflect on their personal experiences in a safe and trusting environment. We explore what 'wellbeing' means and how we can make small changes in our daily lives. Students practise different mindfulness based techniques for relaxation, such as formal meditation, and take part in other activities based on the NHS '5 Steps to Wellbeing.'

A willingness to take part in meditation and other activities, such as basic yoga stretches and walking, along with an open mind is essential for all students who attend this group.

You could benefit from attending if:

- You need a space to feel calm
- You may need time away from studies to connect with others
- You suffer with stress related symptoms such as panic attacks
- You could do with a confidence boost
- You think you might benefit from seeing things from a different perspective

Writer's Forum

Course Leader: Mrs Z Smith
smithz@ridgewayschool.com

Words are powerful and give people the opportunity to express their views. In our writer's forum session we'll harness the skills to write in a variety of forms. We'll experiment with poetry, engage with fiction and find our own voices along the way.

As part of the Forum there will be opportunities to apply to external writing competition such as the University of Lancaster Writing Award and the Northeastern University London Essay Writing Competition. We'll also publish an anthology of our own writing twice yearly.



Sociology

Sociology is the study of society and human interactions within it. As a broad subject, it provides skills and knowledge relevant to careers in social research, the Civil Service, HR and even marketing.

Subject skills:

- Analysis
- Communication
- Cross-cultural understanding
- Problem solving
- Research

MEDICINE & HEALTH CARE VIRTUAL REALITY

RECRUITMENT & HR - PEOPLE AND CULTURE SPECIALIST

7.2% to 2027

the coming years

social movements

Explore



Courses and Enrichment...

Art		
Art (Fine Art)	Mrs A Fair	faira@ridgewayschool.com
English		
English Language & Literature	Mrs F Williams	williamsf@ridgewayschool.com
Design Technology		
Art / Textile Design	Mrs M Nuevo	nuevom@ridgewayschool.com
Graphic Communication	Mrs M Nuevo	nuevom@ridgewayschool.com
Photography	Mrs M Nuevo	nuevom@ridgewayschool.com
Humanities and Social Sciences		
Geography	Miss A Curtis-Slater	slatera@ridgewayschool.com
History	Mr J Bister	bisterj@ridgewayschool.com
Philosophy	Mrs H Clapton	claptonh@ridgewayschool.com
Performing Arts		
Drama	Mrs R Jankinson	jankinsonr@ridgewayschool.com
BTEC Extended Certificate in Music	Mrs R Jankinson	jankinsonr@ridgewayschool.com
BTEC L3 Extended Certificate in Performing Arts	Mrs R Jankinson	jankinsonr@ridgewayschool.com
Maths and Computing		
Computer Science	Mr C Adams	adamsc@ridgewayschool.com
IT Extended Certificate	Mr C Adams	adamsc@ridgewayschool.com
Core Maths	Mrs C Horton	hortonc@ridgewayschool.com
Further Maths	Mrs C Horton	hortonc@ridgewayschool.com
Maths	Mrs C Horton	hortonc@ridgewayschool.com

Physical Education		
BTEC L3 Extended Certificate in Sport	Mrs R Hill	hillr@ridgewayschool.com
BTEC L3 Diploma in Sport	Mr M McMeeking	mcmeekingm@ridgewayschool.com
BTEC L3 Extended Diploma in Sport	Mr M McMeeking	mcmeekingm@ridgewayschool.com
Science		
Biology	Miss M Tuck	tuckm@ridgewayschool.com
Chemistry	Miss C Gallagher	gallagherc@ridgewayschool.com
Physics	Mr P Kench	kenchp@ridgewayschool.com
BTEC L3 Extended Certificate (Single) in Applied Science	Miss L Peddle	peddlel@ridgewayschool.com
BTEC L3 National Diploma (Double) in Applied Science	Miss L Peddle	peddlel@ridgewayschool.com
Social Science		
Business Studies	Mrs L Dunne	dunnel@ridgewayschool.com
Economics	Mrs L Dunne	dunnel@ridgewayschool.com
Law	Mr A Northcott	northcotta@ridgewayschool.com
Politics	Miss H Buttery	butteryh@ridgewayschool.com
Psychology	Mr M Halsall	halsallm@ridgewayschool.com
Sociology	Mr M Halsall	halsallm@ridgewayschool.com
Enrichment		
Duke of Edinburgh Gold	Mr H Bessant	bessanth@ridgewayschool.com
Extended Project	Mr N Cairns	cairnsn@ridgewayschool.com
CPA Ambassadors	Mrs R Jankinson	jankinsonr@ridgewayschool.com
HSLA	Miss S Gayle	gayles@ridgewayschool.com
Debating and Activism	Mr P Burtwell	burtwellp@ridgewayschool.com
A6 Aspire	Miss S Collins	collins@ridgewayschool.com
R6 Sport	Mrs R Hill	hillr@ridgewayschool.com
Wellbeing	Mrs A Midson	midsona@ridgewayschool.com
Writer's Forum	Mrs Z Smith	smithz@ridgewayschool.com

www.ridgewayschool.com

The Ridgeway School & Sixth Form College
Inverary Road, Wroughton, Swindon, Wiltshire, SN4 9DJ
Tel: 01793 846100 Fax: 01793 815065



Principal: Adrian Cush

Proud to be part of The White Horse Federation Multi-Academy Trust