



Vocabulary

Field to Fork Key Questions



Key Vocabulary	Definition
Greenwich meridian	imaginary line used to indicate 0° longitude that passes through Greenwich in London
Time zone	Gives an overview of current local times around the world. It takes into account daylight saving time changes
Pastoral	Land used for the keeping or grazing of sheep or cattle (animals)
Arable	Land used for growing crops
Organic	Farming method that does not use chemical fertilizers, pesticides, or other artificial chemicals. Grown naturally
pesticides	A substance used for destroying insects or other organisms harmful to cultivated plants or to animals
Fair trade	trade between companies in developed countries and producers in developing countries in which fair prices are paid to the producers.

Where does our food come from?

How does climate zones affect farming?

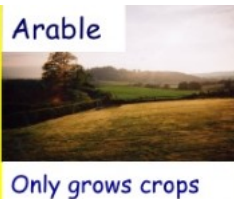
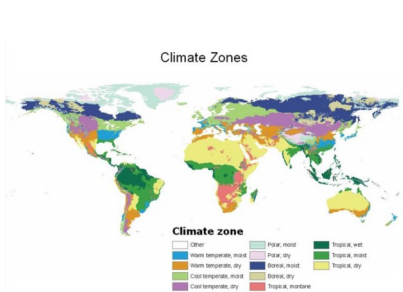
What are the challenges in farming?

Key event:
Drought in Australia
'millennium drought'



Key Facts
Agriculture is the single largest employer in the world.
There are 20 million hectares of farmland in the UK - that's the equivalent of 30 million football pitches.
Wheat is the most common crop in the UK
Agriculture in the United Kingdom uses 69% of the country's land area
60% of all food eaten in the UK is grown on British farms
Farms produce over five and a half million tonnes of potatoes a year - enough to cover 120,000 football pitches.

Fieldwork



Production of UK crops

