

THE PALMER ACADEMY WEEKLY ROUND-UP

Dear Parents and Carers,

As approach the weekend, here is our weekly update and reminder of dates.

Clubs Started this Week:

It was great to start clubs again this week and see children joining in a variety of clubs including football, lego and singing. It is an opportunity for children to enjoy their passions and share their talents. I am running singing club this term and I was amazed by the enthusiasm of our young singers.

National Bird Watch on February 8th:

Mark your calendars for an exciting event on the 8th of February! Our school will be participating in a national bird watch as part of the REACH2s record-breaking activity. This event will involve observing and documenting the various bird species present in our surroundings.

Sharing Results Together:

Our school will be joining forces with 60 other schools, all participating in the same bird watch. The goal is to share our collective results and contribute to a broader understanding of the bird diversity across the country.

How You Can Participate:

While you are outside with your children, take a moment to observe the birds and help your children identify different ones. They might even want to take a picture or draw it. This activity aims support their understanding of nature and the animals we share our world with

We hope you and your children enjoy this unique opportunity to connect with nature and contribute to a record-breaking activity. If you have any questions or need further information, feel free to reach out to us.

Have a lovely weekend.

A Higginbotham

Kind Regards

Miss A Higginbotham

In This Issue

- Attendance
- Important Dates
- Information for Parents



Important Dates

2nd February – Number Day to raise money for NSPCC. All children to bring £1 and wear a number on their clothes as well as non-uniform.

8th February -Chinese New Year school lunch

8th February National Bird watch

5th and 6th March- Parents Evening: Save the dates, further details to follow

Information for Parents/Carers

Reminder: PE days for this half term

Reception- Monday

Year 1- Monday and Wednesday

Year 2- Tuesday and Wednesday

Year 3- Monday and Thursday

Year 4- Tuesday and Wednesday

Year 5- Wednesday and Friday

Year 6- Monday and Thursday.

Stevensons (Uniform supplier) (flyer attached)

To celebrate their new Reading store opening in January they will be giving all customers 10% off* when you shop in store from the **12th to 31st January**.

Stevensons, Chatham Place Reading. RG1 7AR

*Offer valid until **31st Jan 2024** on instore purchases only, when flyer is presented at till point. Offer excludes web orders, sale items and footwear. Offer is only valid at our Reading Branch

Reminder: School lunches

Parents are now able to cancel and book school dinners up to 9am in the morning. Please remember to order for your child before this time and cancel any meals not required should your child be absent for the day. Meals should only be ordered by the school office on the rare occasion that you may have forgotten to order. Thank you for your support.

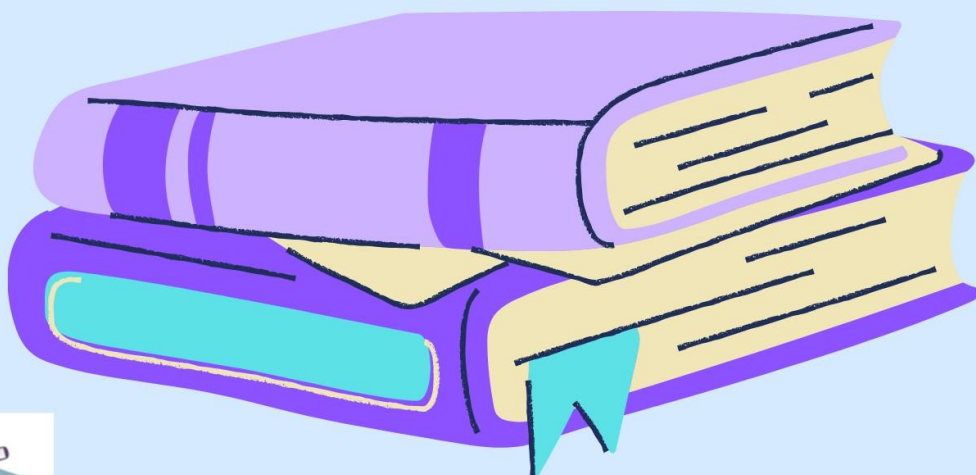
AWARD WINNING, LOCAL CHARITY

ABC to read

ARE SUPPORTING STRUGGLING
READERS IN OUR SCHOOL.

Do you have a couple of hours
spare each week to be trained
as a reading mentor?

Contact- info@abctoread.org.uk
www.abctoread.org.uk
[0118 9511336](tel:01189511336)
for further information



Attendance Information

Attendance is a key priority for our school this term. We want to ensure that all children's attendance percentages are in line or above national average of 97%. Children with an attendance of 97% above are more likely to be happier attending school, make better progress and eventually achieve better in formal exams. Please see below how even missing a few days of school can lead to many hours of learning missed.

Yearly Attendance	Days Missed	Hours Missed
100%	0	0
97%	6	30
95%	10	50
90%	20	100
80%	40	200



Nursery		Year R		Year 1		Year 2	
AM	PM	Kerr	Rosen	Cole	Donaldson	Ahlberg	Butterworth
90.5 %	93.4%	93.2%	88.6%	90.4%	77.4%	95.6%	93.7%
Year 3		Year 4		Year 5		Year 6	
Benjamin	King-Smith	Binch	Pullman	Hughes	Morpurgo	Horowitz	Lewis
94.3%	88.9%	89.3%	92.2%	98.3%	93.1%	95.4%	91.3 %

Attendance for The Whole School Year Is Currently: 92.2%

Attendance Raffle

You have to be in it to win it! If you attend school every day you will automatically be put into our attendance raffle which will be drawn on a Friday afternoon. A winner from each class will be selected and win a special prize. We are also now holding a half term raffle for those children who have 100 percent attendance where they can win prizes such as amazon vouchers, roblox points, art kits and pencil cases. All the children have to do to be in with a chance of winning is to be in school every day!

