



# SEND

## Parent carer newsletter



SEND Newsletter- Monday 18 December 2023

### What's on?

1. [Have your say! We're asking your views on three SEND strategies](#)
2. [HAF Activities](#)
3. [British Sign Language Advent calendar!](#)
4. [Local story: Schools' support staff complete vital training](#)
5. [You're invited! SPACE Forum launch](#)
  
6. [Adventure for Young Heritage Explorers!](#)
7. [Access Pathway transfer](#)
8. [Neurodiversity newsletter](#)
9. [Free workshop- Growing Up, Sex and Relationships](#)
10. [YPAG Christmas meet](#)
11. [Preparing for adulthood- Ask Annie](#)
12. [Your Parent Carer Forum- NELPCF](#)
13. [SENDIASS- Xmas update](#)

### Have your say! We're asking your views on three SEND strategies

You are invited to give your opinion on three new SEND strategies. These consultations are your chance to give feedback and influence the strategies.

Please read the strategies and respond to the consultations here:

[NELC SEND Local Offer | Have your say – NELC SEND Local Offer \(nelincs.gov.uk\)](#)

You are also welcome to attend one of our consultation feedback teams sessions to hear about and discuss the draft strategies and give your input to shape final documents.

Dates:

- 08/01/24 9-10am
- 15/01/24 2-3pm
- 23/01/24 6-7pm

The sessions are repeated, please confirm which one you'd like to attend by contacting SEND Training [SENDTraining@nelincs.gov.uk](mailto:SENDTraining@nelincs.gov.uk)

Consultations close 30 January 2024.

## HAF Activities

Please see attached for your reference The Holiday Activities and Food Programme (HAF) provider information. The activities will be taking place during the Christmas Holidays from Thursday 21 December through to January 2.

All eligible children have received a voucher from their school and have booked on to the activities through a booking platform.

The next HAF programme will be Easter 2024.

If you require any further information regarding the HAF programme, please let me know. Contact: [Rebecca.wilson@nelincs.gov.uk](mailto:Rebecca.wilson@nelincs.gov.uk) or [haf@nelincs.gov.uk](mailto:haf@nelincs.gov.uk).

Alternative information about the national programme can be found here <https://www.gov.uk/government/publications/holiday-activities-and-food-programme/holiday-activities-and-food-programme-2023-external-site>

## British Sign Language Advent calendar!

There are only a few more sleeps until Christmas. Have you been keeping up with our British Sign Language advent calendar?

You can learn 24 festive signs including 'father Christmas', 'snowman', and 'elf'.

See the sign of the day on Families First social media or find the full compilation here: [NELC SEND Local Offer | British Sign Language Advent Calendar! – NELC SEND Local Offer \(nelincs.gov.uk\)](#)

## Local story: Schools' support staff complete vital training

The fourth cohort of Emotional Literacy Support Assistants (ELSAs) are celebrating the completion of their training led by North East Lincolnshire's Community Educational Psychology Service.

ELSAs are based in schools throughout the region as learning support assistants. They help pupils with special interventions to support their wellbeing, to help them to focus, and to overcome challenges at school. They work with children and young people either individually or in small groups and deliver bespoke interventions tailored to needs.



The newly-trained ELSAs are Helen Foster-Isaacs, Melissa Farrow-Browne, Louise Axcel, Michelle Frosdick, Jo Hilton, Joanna Brecken, Iain Ceclich, Hayley Whitney-Smith, Jill Cornthwaite, Laura Rose and Stephanie Claybourn.

Read the full story: [\*\*NELC SEND Local Offer | Schools' support staff complete vital training – NELC SEND Local Offer \(nelincs.gov.uk\)\*\*](#)

### You're invited! SPACE Forum launch

Join the official launch of the Settings, Parents and Carers for Education (SPACE) Forum on 16 January at Grimsby Town Hall from 9:30-11:30am.

The forum evolved from the successful SEND parent carer and practitioner forum started by the Autism in Schools project. This is the only local forum that offers the opportunity for parent carers and practitioners from educational settings to come together, share experiences and work towards improvements for SEND.

You will receive a warm welcome, and meet like-minded people in a safe space. The forums are held every month discussing topics and hearing from guest speakers chosen by parent carers.

- February 9 2024
- March 19 2024
- April 23 2024
- June 11 2024
- July 9 2024



**Settings, Parents and Carers for Education**  
North East Lincolnshire

We are excited to announce the official launch of the Settings, Parents and Carers for Education (SPACE) Forum on the **16<sup>th</sup> of January 2024 at Grimsby Town Hall 9.30am -11.30am**. The forum originally started as part of the Autism in Schools project and was so successful and productive that NEL were determined that it continued.

It is the **only** forum in North East Lincolnshire that provides a regular opportunity for parent carers and educational settings to meet and work in partnership to improve the educational experiences for our Children and Young People (CYP) with Special Educational Needs and Disability (SEND). SPACE Forums will be held monthly at the Town Hall with every session featuring a different topic/theme decided by Forum members.

So, whether you are a parent carer or a SENDCO/teacher/practitioner working in an educational setting (nursery to college) please come and join us at the SPACE Forums. You will receive a friendly and warm welcome; meet like-minded people and share your views and experiences while enjoying a drink and a biscuit in a safe space.

**Future SPACE Forum dates for this academic year 2023-2024**

**Grimsby Town Hall**  
**9.30am - 11.30am**

**Tuesday January 16th 2024**

**Friday February 9th 2024**

**Tuesday March 19th 2024**

**Tuesday April 23rd 2024**

**Tuesday June 11th 2024**

**Tuesday July 9th 2024**

## Adventure for Young Heritage Explorers!

Join us for "Treasure-Makers," an 8-week heritage adventure for 8 to 13-year-olds!

Every Wednesday, 1 pm to 3 pm, starting January 31st, 2024, at Our Big Picture, 21 Bethlehem Street, Grimsby DN31 1JN.

### What's Inside:

- Heritage Skills and Fun Activities
- Learn about Our Big Picture's 12th-century site
- Explore local history and past lives
- Craft your own artefacts and treasures

Imagine creating clues about your life today—stories, passions, and memories. – craft treasures showcased with genuine artefacts for a captivating sharing presentation.

### When:

- Wednesdays, 1 pm to 3 pm
- Starting January 31st, 2024

For sign-ups or info, contact Jo at [obpteam@ourbigpicture.co.uk](mailto:obpteam@ourbigpicture.co.uk).

Let the heritage adventure begin!

## Access Pathway transfer

**The North East Lincolnshire Access Pathway is currently being transferred to Navigo as part of wider plans to improve and streamline children and young people's mental health services.**

**Access Pathway referral forms will no longer be used after Friday 22 December, 2023.**

The Access Pathway telephone number and email address will no longer be active from 4:00PM on the Sunday 7 January, 2024.

Please visit the Navigo CAMHs (YMM) Neurodevelopmental Service webpage for further information and updates. [Neurodevelopmental Service :: Navigo \(navigocare.co.uk\)](https://www.navigocare.co.uk)

## Neurodiversity newsletter

Did you read our latest Neurodiversity newsletter?

**[NELC SEND Local Offer | Neurodiversity and Autism Update November/December 2023 – NELC SEND Local Offer \(nelincs.gov.uk\)](#)**

**Free workshop- Growing Up, Sex and Relationships**

A FREE workshop for parent carers – exploring how best to support your child with additional needs through puberty and the teenage years.

Monday 29th January 2024, from 9.30am – 11.30am.

This workshop will be held online via Zoom.

This virtual workshop, aimed at parent carers of children with additional needs, will help you to:

- Develop your understanding of how the process of 'growing up' affects your child and your relationship with them
- Feel more confident at supporting your child to understand the physical and emotional changes that happen to them during puberty
- Feel more equipped to support your child with understanding how to develop and maintain safe and appropriate personal relationships

We will give advice on how to install and use Zoom before the workshop is held if you require this. If you prefer to not be visible or audible on screen that is fine by us.

Please direct any enquiries relating to your booking to [training.admin@contact.org.uk](mailto:training.admin@contact.org.uk)

For further info and support from Contact, please email [info@contact.org.uk](mailto:info@contact.org.uk) or see [www.contact.org.uk](http://www.contact.org.uk)

To register please click on the following link: [Growing Up, Sex and Relationships Workshop for parent carers in NE Lincs Tickets, Mon 29 Jan 2024 at 09:30 | Eventbrite](#)

**YPAG Christmas meet**

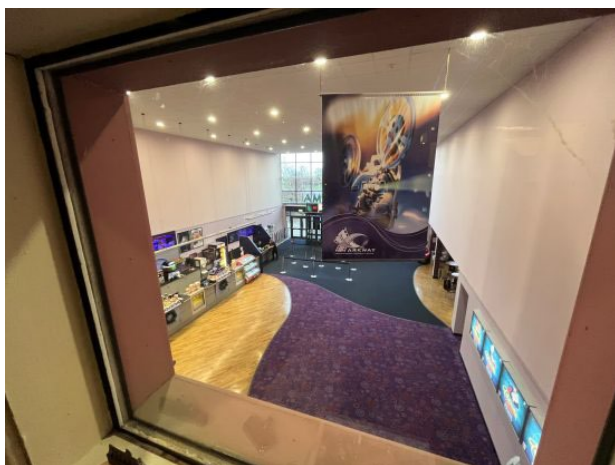
Our fabulous YPAG group met on Thursday 14 December at Parkway Cinema. The group is a collective of Secondary and post-16 students from around the borough who have SEND. They meet regularly online to take part in activities and share their voice about what we offer.

To celebrate their involvement so far we took them on a tour of Parkway Cinema, which was suggested by a YPAG member from Oasis Immingham.

Parkway put on a fabulous behind-the-scenes tour. We discussed the business aspects of running a cinema, as well as talking about the history of cinema, looking at old movie reels and seeing how they've modernised into today's current projectors.

A huge thank you to all the students in the group for being such enthusiastic members of the group, and to their teachers, SENCo's and TA's who support them to join.

Next year we have engagement projects such as the SEND Awards, post-16 options, Delivering Better Value in SEND, the experience of a young person with SEND living in our area, and two more exciting tours.



## Preparing for adulthood- Ask Annie



Email: [askannie@nelincs.gov.uk](mailto:askannie@nelincs.gov.uk)

---

Text: **07595 122306**

Are you a young person with Special Educational Needs?

Do you have any questions about post 16 education, training and employment or do you want to know more about preparing for adulthood?

You can always "Ask Annie" about...

- **Planning for the future**
- **Employment**
- **Transport**
- **Leaving school & starting college**
- **Daytime activities**
- **Health**
- **Training & work experience**
- **Living independently**

Find out more about preparing for adulthood and transitions. [NELC SEND Local Offer | Preparing for adulthood \(nelincs.gov.uk\)](https://nelincs.gov.uk)

### Your Parent Carer Forum- NELPCF

NELPCF is a collective group of parents passionate about driving positive change, we have come together to rebuild a Parent Carer Forum. Our aim is to be a true representation of the voices of parent carers of children with additional needs and disabilities. We strive to have a positive impact on the planning and provision of services and decision making for the families of North East Lincolnshire- now, and in the future.



Find out more about the forum and how to get involved by visiting their Facebook [North East Lincolnshire Parent Carer Forum | Grimsby | Facebook-](#), or the [NELPCF website-](#) .

### SENDIASS– Xmas update

SENDIASS will be operating with minimal staff availability from Thursday 21 December through to Tuesday 2 January so it may take longer for the team to respond.

SENDIASS have shared an update looking back over their work this year. Read the full update:

[NELC SEND Local Offer | Special Educational Needs and Disability Information Advice Support Service update – NELC SEND Local Offer \(nelincs.gov.uk\)](https://nelincs.gov.uk)

---



SENDIASS provide support for SEND, across education, health and social care.



[Sendiass North East Lincolnshire | Facebook](#)

Contact SENDIASS:  
Call- 01472 326363  
Email- [ask@nelsendiass.org.uk](mailto:ask@nelsendiass.org.uk)

[SENDIASS](#) website

---

To receive this newsletter by email please contact [lauren.thompson2@nelincs.gov.uk](mailto:lauren.thompson2@nelincs.gov.uk).

If you have questions about SEND we are always here to help. Please don't hesitate to email [sen@nelincs.gov.uk](mailto:sen@nelincs.gov.uk). We always try to make sure that children and parents/carers voices are heard.

*These Weekly SEND parent/carers newsletters are shared with teams within education, health and social care as well as parents/carers SENCOs, the DfE and local charities.*

*If parents/carers or young people over 16 do not have access to the internet or if they prefer to receive paper copies only please contact [sen@nelincs.gov.uk](mailto:sen@nelincs.gov.uk).*