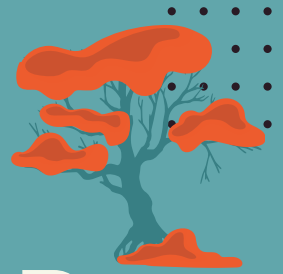




SEND



NEWSLETTER

January 2025

LATEST NEWS



Mainstream Educational Settings are invited to apply for up to £10,000 to improve inclusion in your setting by making improvements to spaces such as a dedicated sensory space, accessible outdoor equipment, improving a dedicated space for 1-2-1 support and more. The funding can be put towards a larger project with the same aim.

More information about the grant funding and the application can be found on the SEND Local Offer at 

[NELC SEND Local Offer | High Needs Capital Grant Funding -NEL Small Grant Fund - NELC SEND Local Offer](#)

SEND Recruitment

There is a fabulous opportunity for educational professionals to join a great team and an exciting new Resource Specialist Provision development. North East Lincolnshire Council are working in partnership with leaders at Healing Academy and Harbour Learning Trust, to deliver the right support at the right time for young people working around age-expected levels of attainment who have Autism as a primary need.

There are currently vacancies for the Specialist Resource Provision available on [MyNewTerm](#) as follows:

Inclusion Support Assistants <https://lnkd.in/eJNMvXig>
Lead Specialist Resource Provision <https://lnkd.in/eQWzGY4J>

If you are interested in these roles and have any questions, please get in touch with [Harbour Learning Trust](#)



[SENDlocaloffer.nelincs.gov.uk](https://sendlocaloffer.nelincs.gov.uk)



Setting of the month

REYNOLDS CHILDREN'S DAYCARE, CLEETHORPES

Reynolds Childrens Daycare in Cleethorpes is our shining setting for this month. They took part in the North East Lincolnshire Springboard programme, a targeted outreach service led by Cambridge Park Academy that supports settings through one-to-one support for staff and bespoke interventions based on the needs of a child.

Staff at the setting worked together to ensure the knowledge and skills are implemented by all staff and have continued to use their experience to support other students. They have received great feedback from parents and have seen amazing results for the children. Staff said:

"The children are communicating more, and we are seeing increased cognitive development as a result."

"Having an experience practitioner who is currently working with children with additional needs and providing practical support has been such a valuable training experience for staff."

"Springboard has had a really positive impact on our practice."



YPAG



Our Winter YPAG meeting took place at Parkway Cinema, Cleethorpes. Young people with SEND from a range of mainstream and specialist secondary schools and colleges in North East Lincolnshire took a behind the scenes tour of the world of film and entertainment.

We watched our SEND Alternative Provision (SENDAP) Board members introduce themselves on the big screen in 6 minutes of movie magic and chatted about life in our area for young people with additional needs.

A huge thanks to James at Parkway Cinema Cleethorpes for hosting us.





Key Date

If your child is transitioning to primary school or to secondary school in September 2025 and has an EHCP, the plan should be finalised by 15th February 2025.

SEND Shout Outs

Café Aspire is an exciting community venture that offers a warm, inviting space free to hire. You can support young people with SEND achieve their aspirations, gaining work experience and qualifications in hospitality while serving you barista made coffee.



Last year they hosted the SEND Employment Forum, Learning Disability Partnership meeting, NELPCF coffee mornings, Christmas parties for Foresight and Living Ambitions, training and more.

Contact them at annemarie.stead@foresight-nelincs.org.uk or call Anne-Marie on 01472 269666. [Café Aspire- Facebook](#).

Grimsby Town Foundation are super excited to announce their first ever SEND half-term football sessions for children aged 12-16 years of age this February.

Courses include: Warm up, skills challenge & ball mastery, shooting sessions, speed, agility and quickness training along with matches and competitions!



**For more info contact:
<https://officialsoccerschools.co.uk/grimsby/>**

Health Spotlight

If you're over 14 and on the learning disability register, you can have a free annual health check with your GP. Annual checks can spot problems early and improve health. Regular checks help you become comfortable with the process, ensuring you seek support when unwell or in emergencies.

For more info watch our video <https://youtu.be/zScJo1HbTK8>

The NHS have made this PDF guidance booklet: [Learning disability register parent carer guidance PDF](#)



SENCO SPOTLIGHT

This month we hear for Ali at Signhills Academy

ALI CHAPMAN

Hi, I'm Ali Chapman, SENDCo at Signhills Academy and I want to tell you what I do and why I love this role.

It's very easy to share with you the challenges; demands for time and resources, a never-ending 'to do' list, unpredictable days, juggling meetings, report writing and working to meet deadlines. So, why do I enjoy it so much?

The professional and personal pride and satisfaction gained from devoting my time to supporting some of our most vulnerable children in achieving success cannot be overstated. Having the privilege of seeing our children grow and develop with us is extremely rewarding; working with families to ensure the best outcomes for their children is a key part of this. In school, we plan our inclusive provision collaboratively and part of my role is upskilling staff by arranging training, resources and facilitating discussions within our team.



EVENTS AND TRAINING



- February 4 @ 9:30 am - 4:30 pm, **Early Years Network SEND Surgeries**, Grimsby Town Hall
- February 7 @ 10:00 am - 11:30 am, **NELPCF Coffee morning- Immingham Family Hub**
- February 11 @ 9:30 am - 11:30 am, **Settings, parents and carers for education- SPACE Forum, guest speakers Compass GO**
- February 11 @ 9:30 am - 4:30 pm, **Early Years Network SEND Surgeries**, Grimsby Town Hall
- February 12 @ 9:00 am - 4:00 pm, **Attachment, regulation and competency (ARC) Training**, Centre 4,17A Wootton Road, Grimsby
- February 14 @ 9:30 am - 5:00 pm, **Makaton Level 1**, Grimsby Town Hall
- February 26 @ 9:00 am - 3:00 pm, **SEND for Middle Leaders**
February 26 @ 3:00 pm - 4:00 pm, **Speech and Language Training for schools**



BOOK YOUR EVENTS & TRAINING PLACE
NE Lincs SEND LOCAL OFFER



SEND Early Years

In North East Lincolnshire, our dedicated team supports local Early Years settings & childminders in implementing the EY Foundation Stage Framework & addressing emerging SEND needs. Comprising of 10 experienced SEND teachers, teaching assistants and EY practitioners, We are passionate about inclusion & supporting our youngest children. We offer training such as Supporting Neurodiversity in the EY, network meetings for practitioners & visit settings to provide tailored advice, information & guidance for individual children. Find out more information [here](#).



PORTAGE

Portage is an educational service providing support within the family home to children aged 0-3 displaying SEND or a delay of 6 months in 2+ areas of development. Portage helps the family support the child's needs & development with fun & exciting sessions that respect everyone's needs & boundaries. Speak to your health visitor if you think Portage could benefit your family.

[Take a look at Portage on the SEND Local Offer.](#)

What's on?

There are so many activities and events for children and families in our local area, the best way to stay up-to-date is to take a look at

<https://www.facebook.com/FamiliesFirstNEL>



Our Family

By the time your child starts school most will be able to use the toilet, they may have the odd accident and this is normal. For other children, particularly if they have additional needs, toilet training can be much more challenging.

North East Lincolnshire School Nursing Service (SNS) is a universal offer for children aged 4 ½ to 16 with signposting and support for those 16-19. This team can support children with guidance to schools and families regarding toilet training and SENCOs can make a referral by emailing: schoolnursingadvice@nelincs.gov.uk

The ERIC website also has some useful information. If you know of anyone who is struggling with toilet training, their helpline can offer support. The lines are very busy at the moment, but if you complete a web form, one of their continence experts will come back to you when they can: <https://eric.org.uk/helpline-enquiry-form/eting>.



Let's go potty!

Lets Go Potty - toilet training support

What is it?

As part of the Start for Life programme, North East Lincolnshire Council have secured funding to work in partnership with ERIC, the children's bladder and bowel charity, to provide free e-learning training to Early Years staff, schools and Family Hub practitioners. This essential piece of learning will develop the Early Years workforce in enhancing their skills and knowledge around how to support children and their families with toilet training. A school readiness skill and a skill for life.

Who is the training for?

Practitioners working in Family Hubs, Early Years Settings, schools and specialist settings in North East Lincolnshire.

When is it?

The training is provided as an e-learning module. There are 4 modules to complete, each lasting 15 minutes.

How do I book a place?

Please email sendtraining@nelincs.gov.uk to request access to the training.

You will be sent a link to the ERIC training portal (<https://training.eric.org.uk>) where you can register to create an account and a "log in token" which will provide access for one registered email address per setting to access the training. This training can be shared throughout your setting and resources are available for download and printing as required.

-
-
-
-



Preparation for Adulthood

Ask Annie

SUPPORTED INTERNSHIPS

This month prospective interns and their families learned more about Supported Internships in NELincs at our successful interest event. Staff from Diana Princess of Wales Hospital, Humberside Police and North East Lincolnshire Council attended with Linkage College and Learning4Life who are the education providers for our programmes. If you know someone aged 18-24 with an EHCP who wants to progress into work, this is the ideal opportunity to find out what a Supported Internship is all about.

Rotations this year for the Diana Princess of Wales programme have included Retail, Catering and Security. For Humberside Police and North East Lincolnshire Council, we have rotations in Evidential Property, Logistics, Coroner's Office and the Fishing Heritage Centre.

The programme is term time for one academic year and the students will do three different jobs (rotations) in that time. At the end of the programme, they will have learnt life skills and had work experience enabling them to apply for paid work.

For more info on Supported Internships email askannie@nelincs.gov.uk

SEND Parent/Carer survey

We are trialing a new parent/carer survey to gather views on the Preparation for Adulthood process. It is an online form which only takes a few minutes to complete. You may be asked to complete it at the end of the annual review. There are a few schools trialling this at the moment and we hope to roll it out to all schools in the coming months. All of your feedback is really important to us to improve the preparation for adulthood process in North East Lincolnshire so we would really appreciate your help with this.



Text: 07585 122306



Email: askannie@nelincs.gov.uk

SENDlocaloffer.nelincs.gov.uk



January 2025

SENDIASS

SENDIASS is continuing to reach out to more families within the area. Please remember, if your child is transitioning to primary school or to secondary school and has an EHCP, remember the plan should be finalised by 15th February naming the new setting.



Jayne Parrish (SENDIASS Manager)



Parent Carer Forum

Happy New Year from the NELPCF. 2025 is an exciting time for us as the parent carer forum, we have now moved in fully to our new office in Foresight, near Cafe Aspire on Freeman Street, Grimsby. Cafe Aspire is a place to note as we will be holding training, talks, coffee mornings and pop-up events through this coming year. Additionally, we will be collaborating with many more services to get your voices heard.

Please join us on the links below or pop in to one of our coffee mornings.

Find out more about the forum and where you can find them by visiting their Facebook Page <https://www.facebook.com/NELPCF>

NELPCF WEBSITE



SEND DATA

Total number of EHCPs held by NE Lincs LA	1979	↑
Number of EHCAR requests last month	48	↑
% of EHCPs issued last month within 20 weeks	24%	↑
Number of SEND transport routes	275	↑
Number of CYP with SEND aged 0-25 receiving transport	590	↓
Attendance of pupils aged 5-16 with an EHCP	89.4%	→
Attendance of pupils aged 5-16 receiving SEN Support	90.2%	→

CONTACT US



SEN@NELINCS.GOV.UK