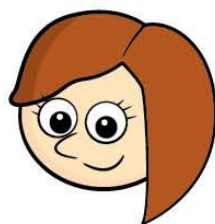


Make equal groups – sharing

I Rosie and Amir are sharing some sweets.



a) Draw lines to share the sweets equally.





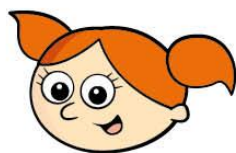
b) How many sweets does each child get?

Each child gets

sweets.

8 sweets shared equally between 2 is

2 Five children share some grapes.



a) Draw lines to share the grapes equally.



2

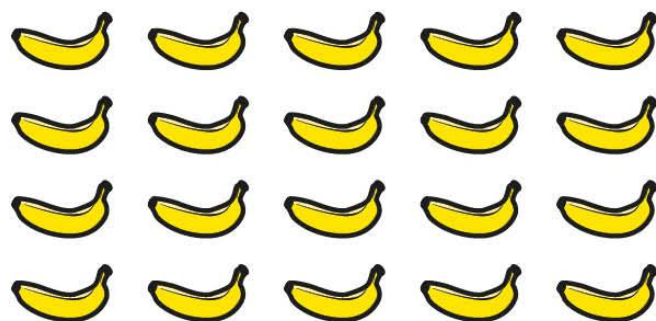
b) How many grapes does each child get?

Each child gets grapes.

10 grapes shared equally between 5 is



- 3 Ron needs to share 20 bananas between 5 boxes.



How many bananas will there be in each box?

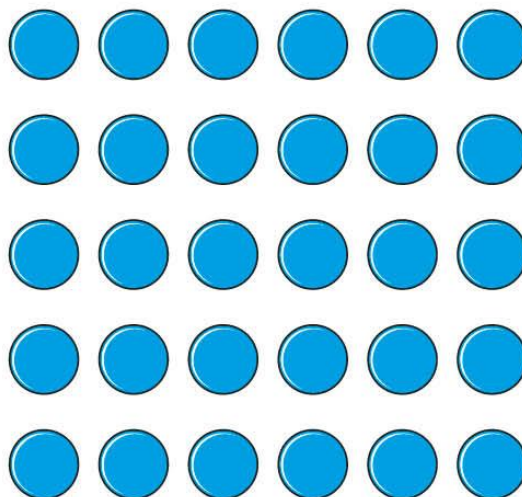
20 bananas shared between 5 boxes is

There will be

bananas in each box.



4 Use 30 counters.



a) Share the counters between 2 friends.

How many counters does each friend get?

- 4** b) Share the counters between 5 friends.

How many counters does each friend get?



- c) Share the counters between 10 friends.

How many counters does each friend get?

