

# Labour Market Information

\*LMI obtained from the Office for National Statistics and Gov.uk. Last updated January 2020

## Greater Manchester LEP

Wigan, Bolton, Bury, Salford, Rochdale, Oldham, Tameside, Trafford, Manchester & Stockport

### Employment



UK - 76.3%  
LEP - 76.2%

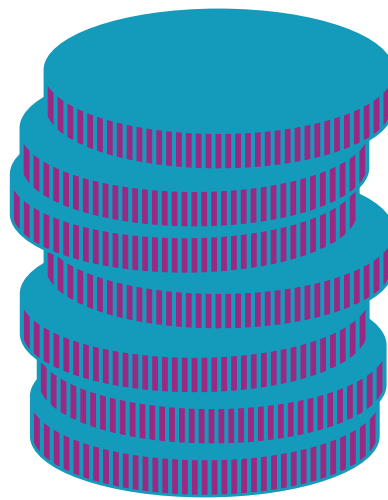
16-64 year old population = 1,790,400  
Total population = 2,812,600

### Unemployment



UK - 3.8%  
LEP - 4.8%

### Salary



UK Average - £30,414  
LEP Average - £28,402

### Self-Employment



183,000 people in the region  
are self-employed

### Growth Sectors

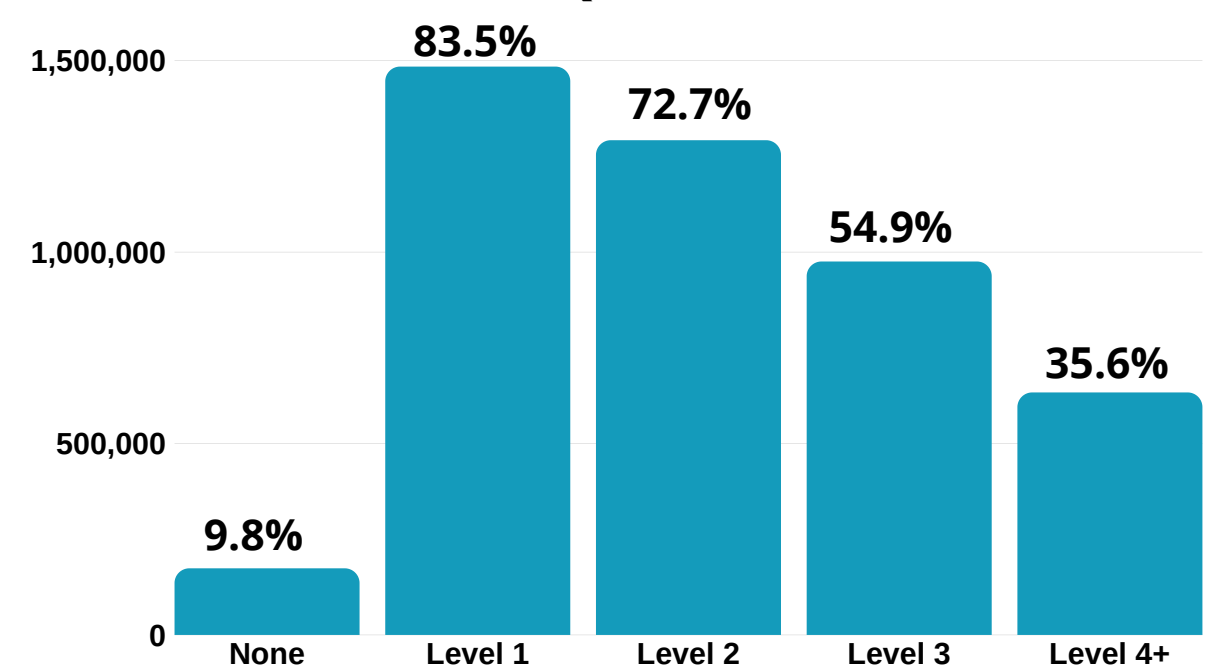
- I.T and Cyber Security
- Health and Social Care
- Energy
- Professional Services
- Industrial biotechnology

There are many other sectors that will grow in your region



### Qualification levels

1,291,600 people have at least a level 2 qualification such as GCSEs or an NVQ.



### Where do people work right now?

#### Most jobs

- Wholesale & Retail - 224,000 (16.8%)
- Health & Social Care - 159,000 (11.9%)
- Administration - 142,000 (10.7%)
- Science & Technology - 121,000 (9.1%)
- Education - 114,000 (8.6%)

#### Fewest jobs

- Arts & Entertainment - 29,000 (2.2%)
- Real Estate - 23,000 (1.7%)
- Electricity, Gas & Air - 12,000 (0.9%)
- Water, Sewerage & Waste - 7,000 (0.5%)
- Mining, Quarrying & Utilities - 350 (0.02%)

#### Did you know...

The NHS is the UK's biggest employer, and the 5th biggest employer in the world!

### What are some of the region's big name companies to work for?

