



# **Trawden Forest Primary School**

Newsletter: Issue 15 – 17/04/26



# Contents of this newsletter. . .

- Headteacher's Message
- Goodbye and Welcome
  - Let's celebrate
- Eco Pledge and Earth Day
  - Year 6 SATS
  - Dates for your Diary
  - Extra-curricular Clubs
- Trawden School Council can collection

# Headteacher's Message

It has been a very busy and positive first week back at school following the Easter holidays, and it has been wonderful to see the children return so settled, enthusiastic and ready to learn.

On Thursday, our EYFS children enjoyed a fantastic visit to Thornton Hall Farm on their very first school trip. This was an exciting milestone for them, and they represented our school superbly. Staff were extremely proud of the children's behaviour, curiosity and independence throughout the day. They thoroughly enjoyed meeting the animals and had lots of fun exploring the farm, creating memories that they will talk about for a long time to come.

We were also delighted by the success of our Easter colouring competition. We received a fantastic number of entries across all year groups, showcasing the children's creativity and effort. Judging was no easy task, but we had a lovely time choosing the winners. These were announced after our Celebration Assembly this morning, and we were able to celebrate the children's achievements together.

Looking ahead, we have some exciting events coming up:

- Earth Day takes place next Wednesday, and pupils will be taking part in activities to help them learn more about caring for our environment
- PTFA Crazy Hair Day on 1st May, and we are very much looking forward to seeing just how imaginative and creative the children can be! The children will also be offered a tattoo in school too!

We would also like to remind parents and carers that we have launched a new email address for all future school correspondence. Please ensure that you now use [office@trawden.lancs.sch.uk](mailto:office@trawden.lancs.sch.uk) rather than [bursar@trawden.lancs.sch.uk](mailto:bursar@trawden.lancs.sch.uk). The contact email for our new SENDCo is [jturner@trawden.lancs.sch.uk](mailto:jturner@trawden.lancs.sch.uk).

Finally, we would like to extend our sincere thanks to Mrs Alcock and Ms Robyn Lee for their very generous donation of lottery winnings back to the school. We are extremely grateful for your continued support, which makes a real difference to our pupils.

Thank you, as always, for your ongoing support. We look forward to another busy and exciting term ahead.

Kind regards  
Mrs L Stinchon



# Goodbye and Welcome



## Farewell to Mrs Beetham

As you know at the end of this week we will be saying a fond farewell to Mrs Gemma Beetham, our EYFS Teacher and SENDCo, who has been a hugely valued member of Trawden Forest Primary School for the past 10 years. During her time with us, Mrs Beetham has shown unwavering dedication to our children and families. Her care, expertise and commitment to supporting pupils with additional needs have made a lasting impact across our school community. Mrs Beetham is moving on to an exciting new role as a Lead Specialist SEND Outreach Teacher, supporting schools across Bolton. We are incredibly proud of her and wish her every success. Her final day with us will be Thursday 16th April. On behalf of staff, pupils, governors and families, we thank Mrs Beetham for everything she has given to Trawden Forest. She will always be a valued part of our school family.

## Welcoming New Staff

We are also delighted to warmly welcome two new members of staff who have joined us this week. Mrs Burton has joined our school office team, working alongside Mrs Sims. We are sure many of you will meet her and talk to her very soon, and we know she will be supported by staff and families alike as she settles into her role. We are confident she will be a great addition to our friendly and hardworking school team.

We are also pleased to welcome Mrs Turner, who joins us as our new SENDCo, taking over from Mrs Beetham. Mrs Turner brings valuable experience and a strong commitment to supporting pupils with additional needs. We are very much looking forward to working with her and are sure she will feel happy, supported and part of the Trawden Forest family.

Please join us in giving both Mrs Burton and Mrs Turner a very warm welcome to our school.

# LET'S CELEBRATE!



Dates :- 17/04/26

**EYFS – Elsie Thomas, Ronnie Dagg and Lewis Sourbutts**

**YEAR 1 – Ayda Milner and Forest Donlan**

**YEAR 2 – Joey Robinson and Harry Thompson**

**YEAR 3 – Ruby Bryan and Xander Jackson**

**YEAR 4 – Grace Bates and Albie Shaples**

**YEAR 5 – Seth Black and Ariya Cantrill**

**YEAR 6 – Oscar Baillie and Ollie Sharples**

**ATTENDANCE – Year 3 – 99%**



# ECO PLEDGE IDEAS

Small actions. Big impact.



## 1. Eat More Plants

We eat more meat than the planet can handle—Europeans eat twice the global average. Go plant-based for one day and save up to 4.3 kg CO<sub>2</sub>e.

## 2. Wash Clothes at a Lower Temperature

Plants, insects, and wildlife need our help. Plant something insect-friendly—lavender, honeysuckle, herbs, or wildflowers.



## 5. Save Energy at Home

Simple changes matter! Next time you're cold, put on a jumper instead of turning up the heating.



## 5. Save Energy at Home

Next time you're cold, put on a jumper instead of turning up litter.



## 6. Litter-Pick

On your next walk, take a litter picker and collect some litter. A small action with big local impact.



## 8. Buy Something Second-Hand

Next time you need a book, clothing, or anything else check second-hand first to reduce production emissions.



## 7. Swap Out a Single-Use Plastic

Most plastic comes from fossil fuels. Choose one plastic item at home and replace it with a sustainable alternative.



## 9. Contact Your MP

Leaders need to hear from us. Write to your MP and share your concerns about climate change.



## 9. Contact Your MP

Leaders need to hear from us. Write to your MP and share your concerns about climate change!



## 10. Calculate Your Carbon Footprint

The WWF has a brilliant free tool. Try their footprint calculator to understand your impact and ways to reduce it.



# ECO PLEDGE EVENT AND EARTH DAY

🌍 Our world faces many challenges, but together we can make a difference.

In 2015, the Paris Climate Agreement brought countries together with a shared goal: to limit global temperature rise to 1.5°C above pre-industrial levels. It remains one of the most important global commitments to protecting our planet.

Inspired by this, we are excited to take part in a special **Eco Pledge Event** at school. This event works a little differently from a traditional sponsorship activity. Instead of raising money, pupils will ask family and friends to pledge an eco-friendly action to help the environment. This could be something simple like reducing plastic use, planting flowers for pollinators, or saving energy at home — and don't worry, we will provide plenty of ideas!

**1.5-Mile Eco Circuit – Thursday 23rd April 2026**, the day after Earth Day, pupils will complete a 1.5-mile circuit around school to mark our 1.5°C climate pledge.

📄 What You Need to Know:-

Sponsorship/pledge forms will be sent home as paper copies and should be returned by 23rd April 2026.

📄 An ideas sheet will be attached to help your family choose eco-friendly pledges.

As part of this Eco Pledge Event, we will also be celebrating Earth Day in school.

🌱 **Earth Day – Wednesday 22nd April.**

Please bring £2, come dressed in green, blue, or brown, and bring a waste-free packed lunch (or enjoy a school dinner).

We're really looking forward to seeing the positive impact our school community can make together. Thank you for your support.





# Year 6 SATs information

At Trawden, we all aspire for our children to be happy, successful learners in order to reach their full potential and this is no different in Year 6.

In Year 6, we personalise the children's learning as much as possible to enable them to make the best possible progress and will work with you as parents and carers to work on the areas where they need further practice and challenge. We help prepare them, not just for the SATs, but more importantly, their own learning journey and preparation for High School. We do this in many ways, including:

Developing their independence, roles and responsibilities.;

Personalised learning;

Revision guides.

We hope that you will work with us to support your child so that they feel positive and prepared. If you have any queries or questions, please don't hesitate to get in touch.

[head@trawden.lancs.sch.uk](mailto:head@trawden.lancs.sch.uk) or [eclarke@trawden.lancs.sch.uk](mailto:eclarke@trawden.lancs.sch.uk)

Please see the extra information on the Y6 class newsletter, thank you.

DATE	EXAM
Mon 11 <sup>th</sup> May	Grammar, Spelling & Punctuation (Paper 1) Grammar, Spelling & Punctuation (Paper 2)
Tue 12 <sup>th</sup> May	English Reading
Wed 13 <sup>th</sup> May	Maths Paper 1 (Arithmetic) Maths Paper 2 (Reasoning)
Thu 14 <sup>th</sup> May	Maths Paper 3 (Reasoning)

SATs don't measure sports  
SATs don't measure art,  
SATs don't measure music,  
Or the kindness in your heart.



SATs don't see your beauty,  
SATs don't know your worth,  
SATs don't see the reasons,  
You were put upon this earth.

SATs don't see your magic,  
How you make others smile,  
SATs don't time how quickly,  
You can run a mile.

SATs don't hear your laughter,  
Or see you've come this far,  
SATs are just a tiny glimpse,  
Of who you really are.

So sitting at your table,  
With a pencil and your test,  
Remember SATs aren't who you are,  
Remember **you're the best!**



# Dates for your Diary. . .

- **Tuesday 21<sup>st</sup> April** - Whole Class photos
- **Wednesday 22<sup>nd</sup> April** – Earth Day bring £2 and wear green, brown or blue
- **Tuesday 28<sup>th</sup> April** – Y6 Winmarleigh Residential Parent meeting 3.35pm
- **Friday 1<sup>st</sup> May** – PTFA Crazy Hair Day – pay £2 and come with CRAZY HAIR and get a tattoo done in school
- **Monday 11<sup>th</sup> – Thursday 14<sup>th</sup> May** – Y6 SATs each morning
- **Tuesday 2<sup>nd</sup> June** – Y5 Coldwell Residential Parent meeting 3.35pm



# After School - Extra curricular Activities



- **Tuesday** – Dance club (Years 1-3) 3.30pm – 4.30pm 21<sup>st</sup> April – 19<sup>th</sup> May  
**Places available**
- **Wednesday** – Kin Ball ( Years 3, 4, 5 and 6) with Ed Start 3.30pm – 4.15pm  
15<sup>th</sup> April – 20<sup>th</sup> May **FULL no places available**
- **Wednesday** – Gardening club (Years 4, 5 and 6) with Mrs Nelson and Mr Lomax 3.30pm – 5.00pm 15<sup>th</sup> April – 20<sup>th</sup> May **FULL no places available**
- **Thursday** – Netball Club with Mrs Clarke 3.30pm – 4.30pm 16<sup>th</sup> April – 2<sup>nd</sup> July (NO club on 18<sup>th</sup> June) **FULL no places available**





# Trawden School Council



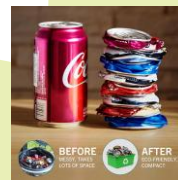
## KEEP COLLECTING PLEASE

Our Year 5 and Year 6 School council members together with their peers from Christ Church, Park and West Street Primary schools form Colne Junior Council.

Together they are helping raise money for the Open Door in Colne by recycling old/used aluminium cans.

Therefore, they are asking that all children and staff bring their **empty** drinks cans into school instead of recycling them at home.

- They must be aluminium cans
- They must be empty.
- They must NOT have a widget!
- Crush them if you can



Thank you for your support.