



# **Trawden Forest Primary School**

Newsletter: Issue 7 – 05.12.25



# Contents of this newsletter. . .

- Headteacher's Message
- PTFA Christmas Hampers
  - Stay Connected
    - Parking
    - Thank you!
- School Christmas Events
  - Clothes Recycling
  - School Council
- Dates for your Diary

# Headteacher's Message



It is starting to look a lot like Christmas around school now. The decorations are up, and the children had a special treat last Friday, when Shooting Stars Entertainment came into school to perform their pantomime: 'Robin Hood' The Christmas Version! – it was such a good show, and the children loved it. What a fabulous way to get into the Christmas spirit!

The PTFA Christmas hampers are wrapped and ready! There is still time to buy your raffle tickets if you have not already done so or you could buy some more! Just call into the office and the ladies will help you. They are full and fabulous!

Our EYFS and Years 1 & 2 are busy practising for their upcoming nativity performance. This is probably the most popular event of the year so you will need to get your ticket requests in as soon as possible please.

THANK YOU to all the children and their family members for taking the time and joining us at the Trawden Light Switch on this Thursday evening. 🎵 🎶 I think you will agree it was a lovely community event and a great way to get the festivities started!

May I politely remind Parents and Carers **not** to use the staff carpark. This is to ensure the safety, of all our children and staff. Please don't hesitate to contact myself, your class teacher or the ladies in the office, if you have any concerns or queries, our doors are always open.

Kindest regards  
Mrs L Stinchon



# PTFA Christmas hampers!

## Christmas Hampers

- With your fabulous support, we have lots of Christmas hampers, which are packed full of goodies ready to raffle off before Christmas
- We have sold quite a few tickets but would love to sell a few more. Please ask grandparents/neighbours/friends if they would like to be in with a chance to win, and we would be delighted to send out more books with your child
- The draw will be held on **Monday 15th December** therefore, you have plenty of time.
- Good luck everyone!





☀️ **Stay Connected with Us!** ☀️ 📌



✅ **Follow us on Facebook – See what we get up to each week!** 📷

📷 **Check out our NEW Instagram page – Don't miss the latest photos and updates!**  
**Follow us!**

💻 **Visit our Website – Explore the News, Calendar, and Events sections to find out everything happening now and coming soon!** 👉

👉 **Be part of our journey – click, follow, and stay updated!**

#### School News

Calendar

Events

Facebook

Instagram

News

Newsletters



# Parking



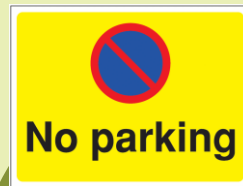
Recently, we have received a couple of complaints from local residents regarding cars being parked on private driveways, reversing into private property, damaging a chain, and parking in the turning circle on double yellow lines. We understand how busy mornings and afternoons can be, but these actions can cause inconvenience and safety concerns for our community.

Please help us by:

- Avoiding parking on or blocking private driveways.
- Not using the turning circle or double yellow lines for parking.
- Being mindful of pedestrians and other vehicles to keep our children safe.

Your cooperation makes a big difference in maintaining good relationships with our neighbours and ensuring the safety of all children.

Thank you for your understanding and continued support.





# Thank you!



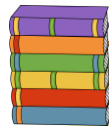
THANK YOU!

Thank you to Mrs D Smith who has kindly donated her lottery winnings back to school.

If you would like to support school by joining our school lottery, please follow the link;  
<https://www.yourschoollottery.co.uk/lottery/school/trawden-forest-primary-school>



Thank you to Angus and Mrs McFadyen for kindly donating some lovely books to our school library.

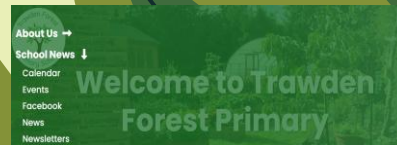


**\*\*\* PLEASE – keep an eye on our Facebook page and see what we get up to each week!**



**And check out our new Instagram page!**

**Also check out our website especially the “News” and the “Calendar” and “Events” to see everything we do and will be doing!**





# School Christmas events



## Christmas Crafting

- To help everyone get into the spirit of Christmas, we would once again like to invite parents and carers to come and join your child/ren for a Christmas crafting afternoon here at Trawden Forest Primary School.
- This Fun Festive activity will be taking place on **Friday 12<sup>th</sup> December 2025** – starting at 2pm and will involve making a variety of Christmas crafts with your child to take home.
- Please return the slip on the letter that was sent home regarding this event or email [bursar@trawden.lancs.sch.uk](mailto:bursar@trawden.lancs.sch.uk) to let us know. Thank you and happy crafting!



## KS 2 Carol Service

- We are looking forward to the Key Stage 2 Carol service at St Mary's Church in Trawden on **16<sup>th</sup> December**. Please could all Key stage 2 children arrive at the church at 6.00pm.

## PTFA Design a Bauble Competition

🎄 On Monday 1st December, all children brought home a Christmas bauble template. This is a fun competition organised by our PTFA! ✨ Children can draw, colour, and decorate the bauble any way they like. Return your design by **Monday 15th December** to enter the competition.

Remember – there are prizes to be won!



# Clothes Recycling

- In our ongoing effort to become more environmentally friendly, we have partnered with a company called **Recycle 4 Schools**, who collect and recycle clothing items on behalf of the school.
- A list of accepted items can be found here →
- With the Christmas holidays approaching, we thought it might be a perfect time for a clear-out of any unwanted clothing or textiles. If you, your family, or friends have items to donate, we would be very grateful for your support.
- Please place your donated items in the bag provided and leave it in the shelter in the staff car park.
- **All donations will be collected on 12th January - so the last day to drop off will be 9th January 2026.**

Thank you for your support.

## WHAT WE WILL ACCEPT



## WHAT WE WON'T ACCEPT





# Trawden School Council

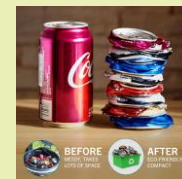


Our Y 5 and Y6 School council members together with their peers from Christ Church, Park and West Street primary schools form Colne Junior Council. Together they are helping raise money for the Open Door in Colne by recycling old/used aluminium cans.

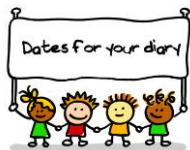


Therefore, they are asking that all children and staff bring their empty drinks cans into school instead of recycling them at home.

- They must be aluminium cans
- They must NOT have a widget!
- Crush them if you can



Thank you for your support.



# Dates for your Diary. . .

- Wednesday 10<sup>th</sup> December – EYFS+KS1 Nativity (2pm & 6pm performances)
- Friday 12<sup>th</sup> December – Christmas Craft – parent sharing event 2pm
- Monday 15<sup>th</sup> December – PTFA Christmas Hamper Raffle Draw
- Tuesday 16<sup>th</sup> December – KS2 Carol Service in St Mary's Church, Trawden 6pm

ALL KS2 CHILDREN ARE EXPECTED TO ATTEND

- Thursday 18<sup>th</sup> December – Christmas Party Day (party clothes!) and Christmas School Dinner Day  
*- If your child usually has a packed lunch but would like a school Christmas dinner please email the office to let them know and pay for 1 dinner on ParentMail by Friday 5<sup>th</sup> December.*
- Friday 19<sup>th</sup> December – Jingle Jog – donations requested for Pendleside Hospice  
– all children can wear Christmas headgear
- Friday 19<sup>th</sup> December – School finishes 3:30pm – **NO AFTER SCHOOL CLUB**

## Merry Christmas and Happy New Year!!!

Monday 5th January 2026 – School Spring Term starts

