



Year 2
Welcome Letter
2025 - 26

Welcome!

Dear Parents and Carers,
I hope you had a wonderful summer break and that your child is feeling refreshed and ready for an exciting new year. It is a pleasure to welcome you and your child to Year 2. We are looking forward to a year filled with learning, creativity and fun.

In this newsletter, you will find an overview of our learning for this term, details about our routines and a glimpse at the topics we will be exploring throughout the rest of the year. We have also included a timetable to help you keep track of all the important bits and pieces.

Regular updates will be shared with you, and I encourage open communication. Please don't hesitate to reach out if you have any questions or concerns. You can reach me directly by email, through the school office or in the playground at the end of the day.

We are really looking forward to an exciting year of learning together!

Miss Lambert, Miss Whittam & Miss Crocombe
blambert@trawden.lancs.sch.uk

Year 2 Topics

Autumn 1 (02.09.25 – 22.10.25)	Spring 1 (05.01.26 – 13.02.26)	Summer 1 (13.04.26 – 22.05.26)
The Place Where I Live	Explorers	Pirates, Buckets and Spades
Autumn 2 (03.11.25 – 19.12.25)	Spring 2 (23.02.26 – 27.03.26)	Summer 2 (02.06.26 – 17.07.26)
Castles and Dragons	Whiskers, Wings and Wild Things	Pirates, Buckets and Spades



Weekly Timetable

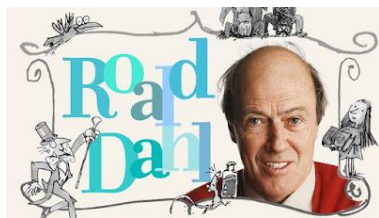
Monday	Tuesday	Wednesday	Thursday	Friday
Bring in your reading book and record in in class every day				
		PE	Homework Due In	Spelling Test / New Spellings
			Forest School	Homework Set



Year 2 Routines




Entering / Exiting (KS1 Yard)	Cloakroom	Snacks
<ul style="list-style-type: none"> Gates open at 8:35am (there is no school led supervision) Doors open at 8:45am Home Time is at 3:30pm (Children will be let out of the KS1 door by the class teacher when their adult is seen) NO parents are to use the staff car park unless permission has been given, by Governors, for exceptional circumstances. 	<ul style="list-style-type: none"> Each child has their own peg for personal belongings, such as their coat, bag, PE kit & Forest School Kit (on set day). 	<ul style="list-style-type: none"> All children receive a free piece of fruit every morning playtime Children are allowed to bring in a healthy snack (i.e. fruit or sugar free snack) for afternoon playtime. This should remain in their tray (not lunchbox) until eaten. No chocolate or crisps permitted. We cannot store yogurt in a fridge Please note that we are a nut-free school due to the severe allergies that we have.
Packed Lunch	Reading	Homework
<ul style="list-style-type: none"> If your child brings in a healthy packed lunch, this will be placed on their peg in the cloakroom. 	<ul style="list-style-type: none"> Each child is expected to bring their reading book and reading record into school everyday and put these in their tray. We ask parents to sign the reading record books, when children have read at home. There is no longer a set day to change books. Once your child has read a book, they can bring it into school change it before morning registration. 	<ul style="list-style-type: none"> Homework and spellings will be set every Friday and due in the following Thursday. Homework books must be in school by each Friday so that new homework and spellings can be stuck in. 



Key Events for Autumn 1: 02.09.25 – 22.10.25

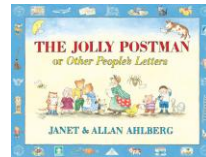


Roald Dahl Day	Cauliflower Cards - Out	Cauliflower Cards - Returned	Non-Uniform Day
Friday 12th September <ul style="list-style-type: none"> Children can come to school dressed as their favourite Roald Dahl character and bring in their favourite book. 	Wednesday 17th September <ul style="list-style-type: none"> It's that time again! We will create our designs for Christmas cards and send these out to you. 	Friday 26th September <ul style="list-style-type: none"> Cards will be sent home for you to choose. They are due back on or before. 	Thursday 25th September <ul style="list-style-type: none"> Children can come to school in their own clothes. All we ask is for a donation of cakes / biscuits for our Macmillan Coffee Morning.
Macmillan Coffee Morning	Individual Photos	Halloween Party	Finish for Half-Term
Friday 26th September <ul style="list-style-type: none"> Please join our coffee morning for delicious treats! All proceeds are donated to Macmillan Cancer Support. 	Tuesday 21st October <ul style="list-style-type: none"> All children will have their individual photo taken. 	Wednesday 22nd October 5.45pm until 7pm Details to follow 	Wednesday 22nd October Finish for half term Return to school on Monday 3 rd November



Our Learning this half term

Our topic for the first half term is 'The place where I live'. Throughout this half term, we will be focussing on:



English: The Jolly Postman - As a class we will read 'The Jolly Postman' and children will learn the features of letter writing. They will then create a recount of their own based on the book. Children will then write a non-chronological report in the form of a poster based on Trawden. They will include all the knowledge they have gained through the Geography unit and if they're feeling confident, will present it to the class.

Maths: Place Value & Addition and Subtraction

Science: Animals including humans – Children will understand different life cycles of animals including frogs and chickens. They will also start to learn about the importance of having a healthy diet.

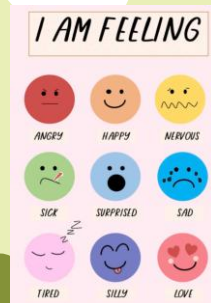
Geography: Trawden – Children will learn about the physical and human features of Trawden.

Computing: Staying safe online and information technology around us.

RE: Hindu Dharma – What might a Hindu learn through celebrating Diwali?

PSHE: Feelings & Emotions

Forest School: Den building



PE

All children **MUST** have their PE Kit in a draw string bag that is kept in school on their peg. It will be sent home to be washed and size checked each half term.

P.E. Kit

white round neck t-shirt

black shorts

black pumps (indoor)

plain black or **white** trainers (outdoor) - these may be brought in each week

plain black tracksuit bottoms / leggings (outdoor)

* **plain black** tracksuit top (outdoor)

drawstring pump bag

* = optional

Note - watches and earrings must be **removed** for PE and long hair must be tied back.

We could be **indoors** or **outdoors**, depending on the weather.



This half term, our PE day is **Wednesday**.

Forest School



When it is our Forest School day, children will come to school in their “**Essential Forest School Kit**”.



On colder days children can also wear their own school jumper or cardigan if they wish (weather dependant).

On our Forest School days, children should bring their outdoor footwear – wellies/boots and waterproofs in a bag to change into.

Essential Forest School Kit – all children **MUST** bring the correct kit on their allocated day.

- plain black full legged tracksuit bottoms or leggings (no logos or stripes),
- **plain black long sleeved quick dry logo top **new** (* short sleeved in summer)
- waterproof coat
- * waterproof suit or trousers
- School shoes / **black** trainers (to wear inside school)
- boots / wellies
- spare socks
- hat and gloves / cap (weather dependant)

Forest School Dates: Thursday 11th September, Thursday 18th September, Thursday 25th September, Thursday 2nd October, Thursday 9th October & Thursday 16th October

School Uniform



Forest School Y1 – Y6

Girls

- school logo bottle green sweatshirt or cardigan
- white polo shirt
- green checked skirt / pinafore or plain black skirt / pinafore
- * black trousers
- white or black socks / black tights
- black school shoes
- * bottle green and white checked dress for summer

Boys

- school logo bottle green sweatshirt
- white polo shirt
- black school trousers
- white or black socks
- black school shoes
- * black school shorts for summer

P.E. Kit

- white round neck t-shirt
- black shorts
- black pumps (indoor)
- * plain black trainers (outdoor)
- drawstring pump bag

- plain black tracksuit bottoms/leggings
- plain black long sleeved quick dry logo top **new
(* short sleeved in summer)
- waterproof coat
- * waterproof suit or trousers
- boots / wellies
- spare socks
- hat and gloves / cap
(weather dependant)

Extras

- * bottle green school book bag
- * bottle green school logo coat
- * bottle green school logo fleece
- * named water bottle
- * green small logo ruck sack

NO jeans

NO trainers or boots

NO jewellery, make-up or nail varnish

NO extreme hair cuts - long hair must be tied back
(watch and plain stud earrings only)

* = optional