



**Year 4**  
**Summer 2 Newsletter**  
**2025 - 26**

# Welcome Back!

We hope you have all had a lovely half-term break and are feeling refreshed for the final part of what has already been a brilliant year. It is hard to believe we are now in the last half term. Time really has flown!

Top 3 Important Dates (more key dates on page 4):

**Friday 12th June**, Year 3 and Year 4 will be welcoming 60 visitors from Marsden to our school.

**Tuesday 16th June**, we will be heading off on our school trip to Manchester Museum.

**Tuesday 23rd June**, we will also be taking part in an exciting Egyptian Day led by an Ancient Egyptian specialist, who is also Nonna to one of the children in our class.

Based on the year so far, we are sure the children will continue to impress us with their hard work, enthusiasm and positive attitudes. They have now read **over 6 million words**, which is an incredible achievement and shows just how far they have come since September. At the start of the year, we thought **5 million words** would be a real challenge, but they have gone above and beyond! As always, if you have any questions or would like to get in touch, please feel free to email me at:

[sloynds@trawden.lancs.sch.uk](mailto:sloynds@trawden.lancs.sch.uk)  
Mr Loynds and Miss Sanderson

# Year 4 Topics

Autumn 1 (02.09.25 – 22.10.25)	Spring 1 (05.01.26 – 13.02.26)	Summer 1 (13.04.26 – 22.05.26)
Nessie: Fact or Fiction?	Invaders and Settlers	Splash!
Autumn 2 (03.11.25 – 19.12.25)	Spring 2 (23.02.26 – 27.03.26)	Summer 2 (02.06.26 – 17.07.26)
Germs, Masks and Mystery	Italia!	Unveiling Ancient Egypt

# Weekly Timetable

Monday	Tuesday	Wednesday	Thursday	Friday
Bring in your reading book and record in in class every day				
		PE	Forest School	Spelling Test / New Spellings
			Homework Due In	Homework Set

**Forest School Dates: Thursday 4<sup>th</sup> June, Friday 12<sup>th</sup> June (With Marsden), Thursday 18<sup>th</sup> June, Thursday 25<sup>th</sup> June, Thursday 2<sup>nd</sup> July, Thursday 9<sup>th</sup> June.**



# Our Learning for this half term

Our topic for this half term is 'Unveiling Ancient Egypt!'

Throughout this half term, we will be focussing on:

**English:** Our focus is going to be on the 'Brer Rabbit'. Brer Rabbit is a clever and mischievous character from African American folklore who uses his wit and trickery to outsmart stronger and more powerful animals. After this, we will move onto debates and how to express their opinions clearly and consider different viewpoints.

**Maths:** We will start by finishing our work on decimals before moving on to money, then on to time and then shape.

**Science:** Animals including Humans – How does digestion work? What is the role of each tooth?

**History:** Ancient Egyptians – what was life like in Egypt 3000 years ago?

**PE:** Athletics - What new skills and techniques can we learn in athletics to help us improve our speed, strength, and teamwork?

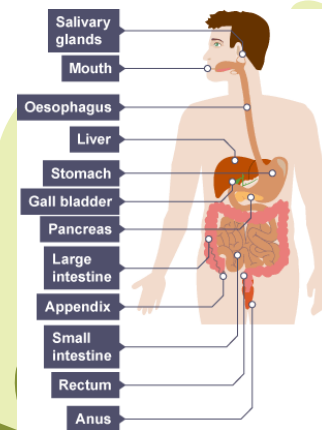
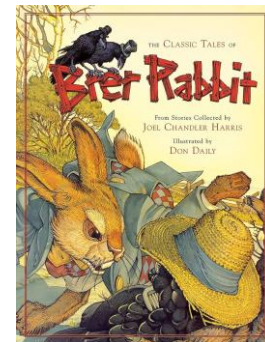
**DT:** Egyptian Collars – How can we design, create and evaluate our own Egyptian inspired collars?

**Computing:** Repetition in Games – How can we use Scratch to create a game?






**PSHE:** Keeping/staying safe

**Music:** Lean on Me (Gospel)

**RE:** Sikhism




# Key Events for Summer 2: 01.06.26 – 17.07.26

<p><b>Multiplication Tables Check</b></p>	<p><b>Marsden Visit Trawden</b></p>	<p><b>Father's Day Pop up shop</b></p>	<p><b>Trip to Manchester Museum</b></p>
<p><b>W.C. 08.06.26</b></p> 	<p><b>Friday 12<sup>th</sup> June</b></p> 	<p><b>Monday 15<sup>th</sup> June</b></p> 	<p><b>Tuesday 16<sup>th</sup> June</b></p> 
<p><b>Sports week</b></p>	<p><b>Egyptian Day</b></p>	<p><b>Summer fair Non-uniform day</b></p>	<p><b>Summer fair</b></p>
<p><b>W.C. 22.06.26</b></p> <p>Golf day (Monday) Sports day (Wednesday 9.15-10.45am) Extreme wheels (Thursday) Zumba day (Friday)</p>	<p><b>Tuesday 23<sup>rd</sup> June</b></p> 	<p><b>Friday 3<sup>rd</sup> July 2026</b></p> 	<p><b>Thursday 9<sup>th</sup> July 2026</b> after school from 3:35pm</p> 
<p><b>Reports home</b></p>	<p><b>Transition / moving up day</b></p>	<p><b>End of the school year!</b></p>	
<p><b>Friday 10<sup>th</sup> July 2026</b></p> 	<p><b>Monday 13<sup>th</sup> July 2026</b></p> 	<p><b>Friday 17<sup>th</sup> July 2026</b></p> 	



# Year 4 Routines



Entering / Exiting (KS2 Yard)	Cloakroom	Snacks
<ul style="list-style-type: none"> <li>Gates open at <b>8:35am</b> (there is no school led supervision)</li> <li>Doors open at <b>8:45am</b></li> <li>Home Time is at <b>3:30pm</b> (Children must tell their teacher who they are leaving with)</li> <li><b>NO parents are to use the staff car park unless permission has been given, by Governors, for exceptional circumstances.</b></li> </ul>	<p>Each child has their own peg for personal belongings, such as their <b>coat, bag, PE kit &amp; Forest School Kit</b> (on set day).</p>	<ul style="list-style-type: none"> <li>Children are allowed to bring in a healthy snack (i.e. fruit or sugar free snack) for morning and/or afternoon playtime. This should remain in their tray (not lunchbox) until eaten.</li> <li>No chocolate or crisps permitted.</li> <li>We cannot store yogurt in a fridge.</li> <li>Please note that we are a nut-free school due to the severe allergies that we have.</li> </ul>
	<p style="text-align: center;"><b>Playground</b></p> <p><b>Gates Open – 8:35 a.m.</b> The school yard is <b>not</b> supervised by staff before school. For everyone’s safety, we kindly ask that children <b>do not</b> use the playground equipment during this time. If a child does use the equipment, the school cannot accept responsibility for any accidents that may occur before or after school hours.</p>	
Packed Lunch	Reading	Homework
<ul style="list-style-type: none"> <li>If your child brings in a healthy packed lunch, this will be placed in the <b>Year 4</b> area outside the dining hall.</li> <li><b>Drinks:</b> Children should bring water in a clearly identifiable water bottle each day which will be kept in class. They will be able to refill if necessary, during the day.</li> </ul>	<ul style="list-style-type: none"> <li>Each child is expected to bring their reading book and reading record into school everyday and have these on their desk.</li> <li>We ask parents to sign the reading record books, when children have read at home.</li> <li>Our Year 4 target is for each child to read <b>10 pages per day.</b></li> </ul>	<ul style="list-style-type: none"> <li>Homework and spellings will be set every <b>Friday</b> and due in the following <b>Thursday.</b></li> <li>Homework books must be in school by each <b>Friday</b> so that new homework and spellings can be stuck in.</li> </ul> <div style="text-align: right;">  </div>

# PE

All children **MUST** have their PE Kit in a draw string bag that is kept in school on their peg. It will be sent home to be washed and size checked each half term.

## **P.E. Kit**

**white** round neck t-shirt

**black** shorts

**black** pumps (indoor)

**plain black** trainers (outdoor) - these may be brought in each week

**plain black** tracksuit bottoms / leggings (outdoor)

\* **plain black** tracksuit top (outdoor)

drawstring pump bag

\* = optional

**Note** - watches and earrings must be **removed** for PE and long hair must be tied back.

We could be **indoors** or **outdoors**, depending on the weather.



PE for Y4 this term is on a **Wednesday**.

# Forest School



When it is our Forest School day, children will come to school in their “**Essential Forest School Kit**”.

On colder days children can also wear their own school jumper or cardigan if they wish (weather dependant).

On our Forest School days, children should bring their outdoor footwear – wellies/boots and waterproofs in a bag to change into.

**Forest School Dates:** Thursday 4<sup>th</sup> June, **Friday 12<sup>th</sup> June (With Marsden)**, Thursday 18<sup>th</sup> June, Thursday 25<sup>th</sup> June, Thursday 2<sup>nd</sup> July, Thursday 9<sup>th</sup> June.

**Essential Forest School Kit** – all children **MUST** bring the correct kit on their allocated day.

- plain black full legged tracksuit bottoms or leggings (no logos or stripes),
- plain black long sleeved quick dry logo top **\*\*new** (\* short sleeved in summer)
- waterproof coat
- \* waterproof suit or trousers
- School shoes / **black** trainers (to wear inside school)
- boots / wellies
- spare socks
- hat and gloves / cap (weather dependant)

# School Uniform



Forest School: Y1 – Y6

## Girls

- school logo bottle green sweatshirt or cardigan
- white polo shirt
- green checked skirt / pinafore or plain black skirt / pinafore
- \* black trousers
- white or black socks / black tights
- black school shoes
- \* bottle green and white checked dress for summer

## Boys

- school logo bottle green sweatshirt
- white polo shirt
- black school trousers
- white or black socks
- black school shoes
- \* black school shorts for summer

## P.E. Kit

- white round neck t-shirt
- black shorts
- black pumps (indoor)
- \* plain black trainers (outdoor)
- drawstring pump bag

- plain black tracksuit bottoms/leggings
- plain black long sleeved quick dry logo top \*\*new (\* short sleeved in summer)
- waterproof coat
- \* waterproof suit or trousers
- boots / wellies
- spare socks
- hat and gloves / cap (weather dependant)

## Extras

- \* bottle green school book bag
- \* bottle green school logo coat
- \* bottle green school logo fleece
- \* named water bottle
- \* green small logo ruck sack

**NO** jeans      **NO** trainers or boots

**NO** jewellery, make-up or nail varnish

**NO** extreme hair cuts - long hair must be tied back  
(watch and plain stud earrings only)

\* = optional