

Trawden Forest Primary School Accessibility Plan



At Trawden Forest Primary School our values reflect our commitment to a school where there are high expectations of everyone. Children are provided with high quality and enriched learning opportunities so that each child attains and achieves all that they are able to. Everyone in our school is important and included. We promote an ethos of care and trust where every member of our school community feels that they truly belong and are valued. We work hard to ensure there are no invisible children here, recognising everyone's uniqueness and success. We recognise learning in all its forms and are committed to nurturing lifelong learners. We are a safe school, committed to improving children's confidence and self-esteem. We know that safe and happy children achieve.

This Accessibility Plan is drawn up in compliance with current legislation and requirements as specified in Schedule 10, relating to Disability, of the Equality Act 2010. School Governors are accountable for ensuring the implementation, review and reporting of progress of the Accessibility Plan over a prescribed period.

The Equality Act 2010 replaced all existing equality legislation, including the Disability Discrimination Act. The effect of the law is the same as in the past, meaning that "schools cannot unlawfully discriminate against pupils because of sex, race, disability, religion or belief and sexual orientation".

According to the Equality Act 2010 a person has a disability if:

- (a) He or she has a physical or mental impairment, and
- (b) The impairment has a substantial and long-term adverse effect on his or her ability to carry out normal day-to-day activities.

The Accessibility Plan is structured to complement and support the school's Equality Objectives, and will similarly be published on the school website. We understand that the Local Authority will monitor the school's activity under the Equality Act 2010 (and in particular Schedule 10 regarding Accessibility) and will advise upon the compliance with that duty.

Objectives

Trawden Forest Primary School is committed to providing an environment that enables full curriculum access that values and includes all pupils, staff, parents and visitors regardless of their education, physical, sensory, social, spiritual, emotional and cultural needs. We are committed to taking positive action in the spirit of the Equality Act 2010 with regard to disability and to developing a culture of inclusion, support and awareness within the school.

The school recognises and values parent's knowledge of their child's disability and its effect on their ability to carry out everyday activities and respects the parent's and child's right to confidentiality.

The Trawden Forest Primary School Accessibility Plan shows how access is to be

improved for disabled pupils, staff and visitors to the school within a given timeframe and anticipating the need to make reasonable adjustments to accommodate their needs where practicable.

The Accessibility Plan contains relevant and timely actions to:-

- Increase access to the curriculum for pupils with a physical disability and/or sensory impairments, expanding the curriculum as necessary to ensure that pupils with a disability are as equally prepared for life as the able-bodied pupils; (If a school fails to do this they are in breach of their duties under the Equalities Act 2010); this covers teaching and learning and the wider curriculum of the school such as participation in after-school clubs, leisure and cultural activities or schools visits – it also covers the provision of specialist or auxiliary aids and equipment, which may assist these pupils in accessing the curriculum within a reasonable timeframe;
- Improve and maintain access to the physical environment of the school, adding specialist facilities as necessary – this covers improvements to the physical environment of the school and physical aids to access education within a reasonable timeframe;
- Improve the delivery of written information to pupils, staff, parents and visitors with disabilities; examples might include hand-outs, timetables, textbooks and information about the school and school events; the information should be made available in various preferred formats within a reasonable timeframe.

The Trawden Forest Primary School Accessibility Plan relates to the key aspects of physical environment, curriculum and written information.

Whole school training will recognise the need to continue raising awareness for staff and governors on equality issues with reference to the Equality Act 2010.

This Accessibility Plan should be read in conjunction with the following school policies, strategies and documents:

- School Improvement / Development Plan
- Special Educational Needs Policy
- Curriculum Policies
- Teaching and Learning Policy
- Behaviour Management Policy
- Emergency Plan
- Health & Safety Policy

The Accessibility Plan for physical accessibility relates to the Access Audit of the School, which remains the responsibility of the governing body. It may not be feasible to undertake all of the works during the life of this accessibility plan and therefore some items will roll forward into subsequent plans. An accessibility audit will be completed by the school prior to the end of each period covering this plan in order to inform the development of a new Accessibility Plan for the ongoing period.

Equality Impact Assessments will be undertaken as and when school policies are reviewed. The terms of reference for all governors' committees will include the need to consider Equality and Diversity issues as required by the Equality Act 2010.

The Accessibility Plan will be published on the school website.

The Accessibility Plan will be monitored through the Governor Finance Committee.

The Accessibility Plan may be monitored by Ofsted during inspection processes in relation to Schedule 10 of the Equality Act 2010.

K. Hawkins 2017

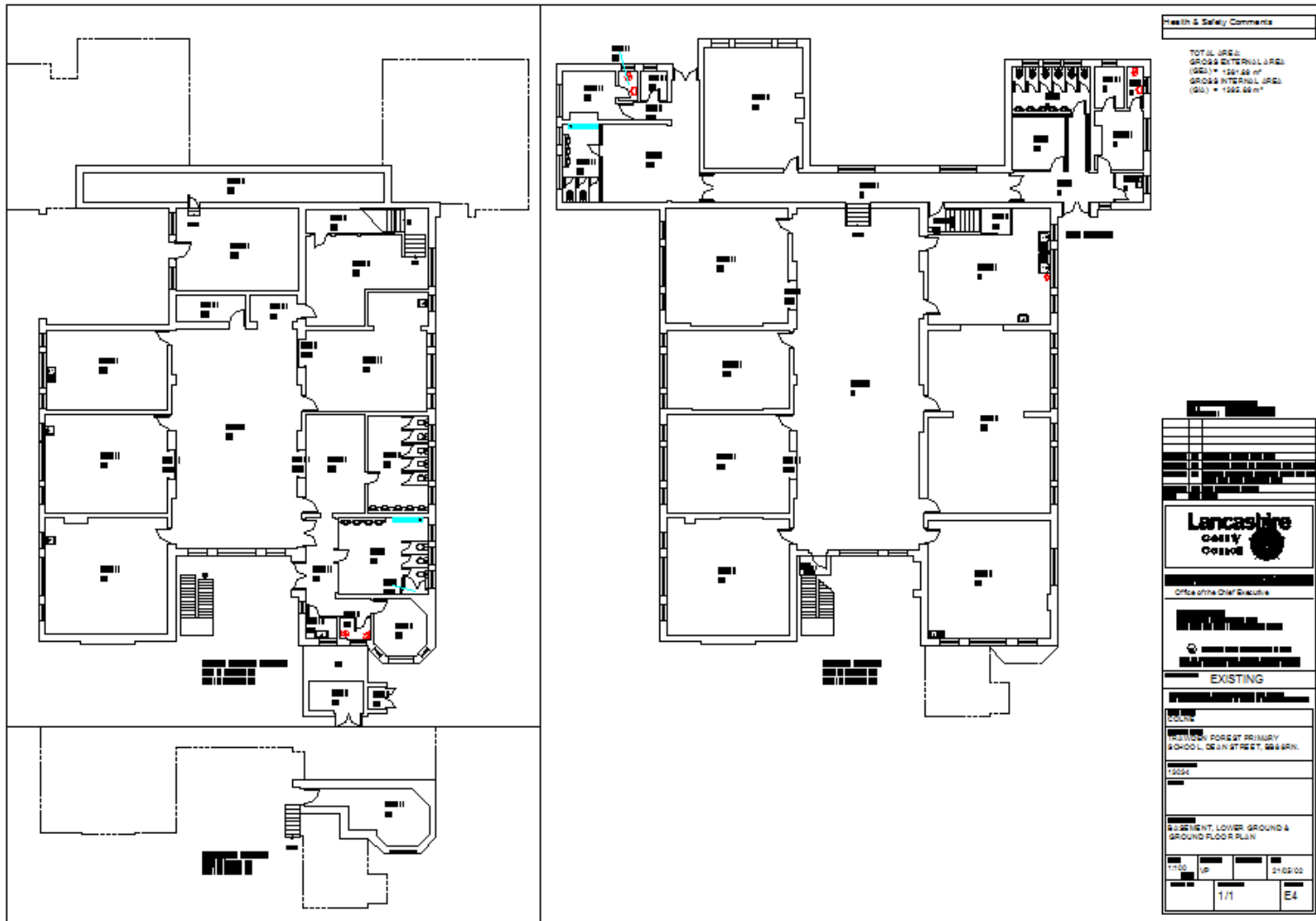
Approved by the Governing Body: December 2014	
Last reviewed:	
Signed: (Chair of Governors)	Date:
Signed: (Headteacher)	Date:
Proposed review date: Spring 18	

It is a requirement that the school's accessibility plan is resourced, implemented, reviewed and revised as necessary and reported on annually. Attached is a set of action plans showing how the school will address the priorities identified in the plan.

The priorities for the Accessibility Plan for our school were identified by:

- **The Governing Body**
- **Head Teacher**
- **Inclusion Leader**
- **School Business Manager**
- **Site Manager**

A plan of the school buildings showing areas of accessibility is shown below



Health & Safety Comments

TOTAL AREA:
 GROSS EXTERNAL AREA
 (GEA) = 1267.00 m²
 GROSS INTERNAL AREA
 (GIA) = 1262.00 m²

<p>Office of the Chief Executive</p>	
<p>EXISTING</p>	
<p>FOUNDATION PLAN</p>	
<p>PROJECT</p>	
<p>LOCATION</p>	
<p>WATSON PORCUP PRIMARY SCHOOL, DEAN STREET, S&S BN.</p>	
<p>DATE</p>	
<p>20 SEPTEMBER 2000</p>	
<p>SCALE</p>	
<p>AS SHOWN LOWER GROUND & GROUND FLOOR PLAN</p>	
<p>1/1</p>	<p>E4</p>

An Access Audit was carried out by the HT in Nov 2017. A number of recommendations were made as follows:

Access Report Ref.	Item	Activity	Timescale	Cost
1.	Improved external visual access	Repaint white edgings on steps. Paint railing struts to ensure visibility.	Annually: October half term from 2015 Annually: October half term from 2015	Labour: Part of Caretaker duties Materials: ≈ £20
2.	Signage	Ensure disabled access signage is clear. Order appropriate signage for entry points.	October half term 2017	Cost centre PROP
3.	Assisted access	Investigate options for assisted access calling office unlocking gates Seek quotes for for inclusion in a future Building Development Plan (18/19).	Ongoing Spring Term 2018	Labour: Caretakers duties Cost centre PROP
4.	EYFS Ramp	Ensure ramp is maintained. Seek quotes for replacement ramp for inclusion in a future Building Development Plan (18/19).	Ongoing Spring Term 2018	Labour: Caretakers duties Cost centre PROP
5.				

Schedule 21: Action Plan A – Improving Physical Access

Ref	Issue	Recommendations	Time Scale	Priority	Cost	Date Completed	Responsibility	
							Other	School
1	Corridor	Ensure equipment is stored effectively and cloakroom is kept tidy.	Immediate	High	None	Ongoing	(specify)	
2	Wheelchair access to main school building KS1	New Ramp for EYFS	Ongoing quotes sought	Low				
3	Assisted access	Buzzer to office.	Ongoing quotes sought	Low				
4								
5								

Trawden Primary School

ACCESSIBILITY PLAN

Schedule 22: Action Plan B – Improving Curriculum Access

Ref	Issue	Recommendations	Time Scale	Priority	Cost	Date Completed	Responsibility	
							Other	School
1	Appropriate differentiation in Teaching	SLT to monitor quality of differentiation and provision for SEND pupils.	Spring Term 2018	High	SLT release costs	?	(specify)	
2	Interventions	Leader for Inclusion to audit current interventions and their success/impact on progress. Provision mapping to be used across all year	Spring Term 2018	High	Resourcing costs of identified areas to develop	?		
3	Classrooms are organised to promote the participation and independence of all pupils	Leader for Inclusion to carry out an audit of resources /QFT to ensure that lessons are planned to meet the needs of all pupils in the class.	Spring Term 2018	High	Possible resource implications where gaps are identified Bid to HT	?		
4	Staff training in the production, implementation and review of Provision maps and IPMs and monitoring systems.	Leader for Inclusion to deliver staff training to teaching and support staff through INSET or staff meeting time.	Ongoing	High	Staff meeting time	?		

5	Staff training in supporting pupils with SEND – focus on key areas of need within the school: ADHD, SPLD, ASD, Dyspraxia	Leader for Inclusion to deliver training where possible. Identify gaps in knowledge and seek external advice if necessary.	Summer and Autumn Term 2018	High	External specialist costs			
---	--	--	-----------------------------	------	---------------------------	--	--	--

Trawden Primary School

ACCESSIBILITY PLAN

Schedule 23 Action Plan C – Improving the Delivery of Written Information

Ref	Issue	Recommendations	Time Scale	Priority	Cost	Date Completed	Responsibility	
							Other	School
1	Availability of written material in alternative formats when specifically requested	The school will make itself aware of the services available for converting written information into alternative formats.	Ongoing	Medium Low need	Not applicable		(specify)	
2	Review documentation on website to check accessibility for parents with English as an Additional Language	The school will review formats publicised on school website – particularly for new parents to the school, in order to ensure accessibility for parents with English as an additional language.	Ongoing	Medium Low need	Cost of Interpreter			
3	Awareness of need	Monitor new starters to identify needs amongst parents/carers	Jan 18	Medium Low need				