



Trawden Forest Primary School

Newsletter: Issue 10 – 24.01.25



Contents of this newsletter. . .

- Headteacher's Message
- Thank you and Well done!
 - Let's Celebrate
- Parent Governor Elections
- Mental Health workshop
 - Please be vigilant!
 - Afterschool activities
 - Dates for your Diary



Headteacher's Message

What an interesting couple of weeks weather-wise it has been here in Trawden. First we had to contend with snow and ice and now storm Eowyn! May I kindly remind parents/carers to drive carefully and be mindful of where they are parking during drop off and pick up times.

Everyone (except Mrs Stinchon! 😊) enjoyed 'Break the Rules Day' we managed to raise an amazing amount for our brilliant PTFA. Thank you to all those who took part.

Last week some of our year 4 children visited 'The Leisure Box' to take part in a bowling tournament. You all conducted yourselves fantastically well and showed real team spirit... They were **TEAM OF THE DAY** - Well done!

Year 3 had a fantastic time at The Pendle Gymnastic Club last week. Thank you to parents/carers for your assistance in getting them there safely and on time.

Well done to the Keystage 2 children who took part in the Pendle Panathlon at Pendle Vale last week. Both Mrs Waters and Miss Gallagher were very impressed with you all!

Some of our Year 2 children visited the leisure box this week to take part in a football competition. Well done everyone for your amazing team spirit and enthusiasm.

Once again our brilliant PTFA are hosting a film night on Wednesday 12th February, tickets are £5 each which includes a film, refreshments and drinks (AND 2 HOURS OF CHILD-FREE TIME!).

Please don't hesitate to contact me or the school office if you have any concerns at all, our door is always open.

Kind regards
Mrs L Stinchon



Thank you and Well done!



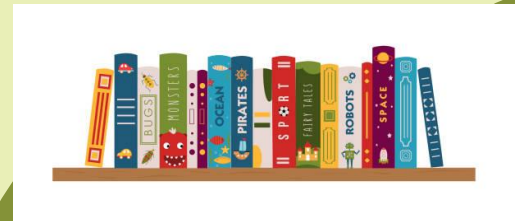
THANK YOU!

- Thank you very much to Mrs Alcock for kindly donating their lottery winnings back to school
REMEMBER:- *“You have to be in it to win it”*

If you would like to support school by joining our school lottery please follow the link;

<https://www.yourschoollottery.co.uk/lottery/school/trawden-forest-primary-school>

- Thank you also to Amelia Henderson for donating some of her books to our school library for other children to enjoy. We really appreciate it.



LET'S CELEBRATE!



Dates :- 17.01.25 / 24.01.25

EYFS - Reggie, Milo, Ralf & Alfie

YEAR 1 – Alice, Ellena, Tobias & Jake

YEAR 2 - Sid, Darcie, Olivia & Louie

YEAR 3 – Aleena, Freddy, Jacob & Freddie

YEAR 4 - Arlo, Evie, Teddy & Indie

YEAR 5 – Ollie H, Bethany, Oscar, Theo & Adeline

YEAR 6 - Beau, Millie, Maisey & Isaac

ATTENDANCE – Year 2 – 97% & Year 1, 4 & 5 – 98%

SHOUT OUT – Coco Year 5 & Noah Year 1



REMINDER - Parent Governor Vacancy



Monday 13th January 2025

ELECTION PROGRESS STARTED – all children were sent home with the Election Booklet including the nomination forms

Tuesday 28th January at 3.30pm

CLOSING DATE – nomination form and biographical details need to have been returned

Thursday 30th January

BALLOT PAPERS - If we receive more than 1 parent being nominated then we will send out the voting slips

Tuesday 11th February at 9:00am

VOTING CLOSES – all votes must be back in school in the voting box

Tuesday 11th February at 12noon

VOTES COUNTED - parental votes will be counted and all parents informed of the outcome

The Governing Body of Trawden Forest Primary School has a vacancy for 1 parent governor to join the team.

In this voluntary role, you will work as part of a team and play a vital role in ensuring the Local Governing Committee is connected with parents and the community.

What does a good Parent Governor need?

- A strong commitment to the role and to improving outcomes for pupils
 - Good interpersonal skills, a willingness to learn, develop new skills and attend relevant training.
 - The ability to support and challenge the school and contribute to the vision and direction of the school.
 - The ability to attend and contribute in meetings whilst maintaining confidentiality.
 - The ability to work as part of a team and value the contributions of others who may hold alternative views to your own.
 - To be willing to join a subcommittee/working party which may meet termly.
 - To visit the school in between meetings to gain a greater understanding of the school, how it functions and progress towards goals.
- Being a Governor is a "hands off" role – decisions made by Governors influence the whole school, but Governors are not responsible for, or involved in, the day-to-day running of the school.

Mental Health week at Colne Library

KNOW YOURSELF GROW YOURSELF

FREE ENTRY

Art Journalling

11AM-12:30 SATURDAY 8TH FEB

ART JOURNALLING FOR CHILDREN'S MENTAL HEALTH WEEK
BRING YOUR FAVE NOTEBOOK

COLNE LIBRARY
PLEASE BOOK IN ADVANCE

RECOMMENDED FOR AGE 7+

SCAN ME

KNOW YOURSELF GROW YOURSELF

Come to Colne Library on **Saturday 8 February from 11am** for a day of fun filled free activities for Children's Mental Health Week

Grow your own sweet pea
Planting activity from 11am (suggested age 5+) drop in

Art Journalling 11am-12:30
Book your place on library website (suggested age 7+)

Instrument Discovery 1-2pm
(all ages) drop in

SCAN ME



Please be vigilant!

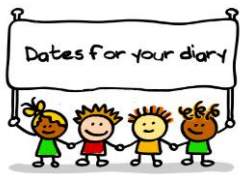


We just wanted to make you aware of a couple of instances locally, of a white male in a white van approaching children, when walking home from school.

We are not aware of anything happening in Trawden, but we wanted to ensure all parents and children need to be vigilant.

Teachers will be reminding children of 'stranger danger' in school.

Thank you.



Dates for your Diary

- **Monday 3rd to Friday 7th February** – Children's Mental Health week
- **Thursday 6th February** – Year 3 trip to Outdoor Elements
- **Friday 7th February** – Year 1 Class assembly * parents and family members invited*
- **Tuesday 11th February** – Safer Internet Day
- **Wednesday 12th February** – PTFA Film Night
- **Friday 14th February** – Break up for half term
- **Monday 24th February** – Start back at school for Spring 2 Half term

