



Year 4
Spring 2 Newsletter
2024 - 25

Welcome Back!

Welcome back! We feel that this year is flying by and have no idea how we are now halfway through this academic year! The children have continued to work hard and produced some terrific pieces of work! We cannot wait to see what they produce during this action-packed half-term.

We have been extremely impressed with their confidences and improvement with swimming over the last 6 weeks. Some have overcome their initial fears and spent the lessons having a brilliant time splashing about and learning life-saving techniques!

The last time we wrote an update (January), the class had read **3.1 million words**. As of this week they have read over **4.8 million words**, which is an incredible achievement! I wonder how many they will have read by Summer 1?

Mr Loynds & Miss Sanderson
sloynds@trawden.lancs.sch.uk

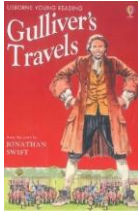
Forest School Dates: Monday 3rd March, Monday 10th March, Monday 17th March, Monday 24th March & Monday 31st March.

Year 4 Topics

Autumn 1 (03.09.24 – 17.10.24)	Spring 1 (06.01.25 – 14.02.25)	Summer 1 (22.04.25 – 23.05.25)
Nessie: Fact or Fiction?	Secrets of Ancient Baghdad	Splash!
Autumn 2 (28.10.24 – 20.12.24)	Spring 2 (24.02.25 – 04.04.25)	Summer 2 (03.06.25 – 18.07.25)
Germs, Masks and Mystery	Trawden & Beyond	Unveiling Ancient Egypt

Weekly Timetable

Monday	Tuesday	Wednesday	Thursday	Friday
Bring in your reading book and record in in class every day				
Forest School			Swimming	Spelling Test / New Spellings
			Homework Due In	Homework Set
			Reading Records checked	



Our Learning for this half term



Our topic for this half term is 'Trawden & Beyond'. Throughout this half term, we will be focussing on:

English: Our focus is going to be on Gulliver's Travels and writing our own adventure story to a new island. Then, focussing on persuasive adverts / leaflets.

Maths: Length & Perimeter, Fractions & Decimals.

Science: Continuing our work on States of Matter – How do things change state?

Geography: Italy today – How does Italy compare to our local area?

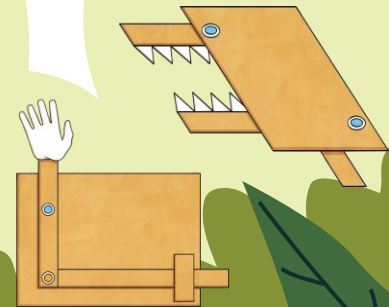
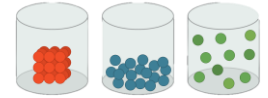
PE: Swimming – See 'Swimming' page for more information.

DT: Levers & Linkages – How can we create a mechanical poster?

PSHE: A World without Judgements

French: Ma Famille (My Family)



RE: Islam





Year 4 Routines

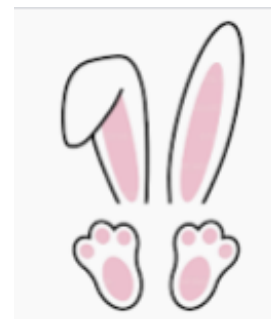





Entering / Exiting (KS2 Yard)	Cloakroom	Snacks
<ul style="list-style-type: none">• Gates open at 8:35am (there is no school led supervision)• Doors open at 8:45am• Home Time is at 3:30pm (Children must tell their teacher who they are leaving with)	<ul style="list-style-type: none">• Each child has their own peg for personal belongings, such as their coat, bag, PE kit & Forest School Kit (on set day).	<ul style="list-style-type: none">• Children are allowed to bring in a healthy snack (i.e. fruit or cereal bar) for morning / afternoon play. This should remain in their tray (not lunchbox) until eaten.• No chocolate or crisps permitted.• Please note that we are a nut-free school due to the severe allergies that we have.
Packed Lunch	Reading	Homework
<ul style="list-style-type: none">• If your child brings in a healthy packed lunch, this will be placed in the Year 4 area outside the dining hall. 	<ul style="list-style-type: none">• Each child is expected to bring their reading book and reading record into school everyday and have these on their desk.• We ask parents to sign the reading record books, when children have read at home.• Our Year 4 target is for each child to read 10 pages per day.	<ul style="list-style-type: none">• Homework and spellings will be set every Friday and due in the following Thursday.• Homework books must be in school by each Friday so that new homework and spellings can be stuck in. 



Science Week is a great time to think about how the world is changing and how we can adapt to those changes. What do change and adapt mean? How have you noticed the world around you changing and how have you adapted? How have animals adapted to new environments over time? Is ever-changing technology making our lives easier or are we adapting to it? Is it true that the prices of some things are changing? How does our immune system adapt to protect us against diseases? Adult output - Would you like to help judge our Science Fair if so, please contact the School Office by Friday 7th March.

Key Events for Spring 2: 24.02.25 - 04.04.25



World Book Week	Science Fair	Parents' Evening
<p>Monday 3rd – Friday 7th March</p> <ul style="list-style-type: none"> Let's get reading! Please see the next page for more details. 	<p>Friday 14th March</p> <ul style="list-style-type: none"> The theme this year is 'Change and Adapt'. 	<p>Tuesday 18th and Wednesday 19th March</p> <p>Information will follow on how and when to book your appointment.</p>
<p>Schools Linking Project</p>	<p>Mother's day pop-up shop</p>	<p>Bunny Bounce</p>
<p>Tuesday 25th March</p> <ul style="list-style-type: none"> Year 3 and Year 4 will be spending half of the day at Marden Primary School to continue our schools linking project. 	<p>Tuesday 25th March</p> <ul style="list-style-type: none"> KS1 pop-up shop <p>Wednesday 26th March</p> <ul style="list-style-type: none"> KS2 pop-up shop 	<p>Friday 4th April</p> <ul style="list-style-type: none"> To raise money for Pendleside hospice, children are asked to bring a pound in to take part in the bunny hop.

World Book Week - wb 3/3



Put these dates in your diary ...

To continue to celebrate and encourage a lifelong love of reading at home and building on from the success of last year, in school we are holding our annual **WORLD CLASS BOOK WEEK** packed full of activities and shared events!

- By Friday 28th February please!**
 - a photograph of your child reading in the most **EXTREME** place they can think of - this can be emailed to bursar@trawden.lancs.sch.uk (or you can bring in an actual photograph)
- Tuesday 4th March**
 - PJ and pillow day – children can come in comfy pj's/onesies and bring a pillow/cushion for a fee of £2 so that they can read in comfort!
 - Book Swap Day – children all bring in books they have read and no longer need and swap it (them) with another child!
- Wednesday 5th March**
 - Special Author visiting school – class workshops
- Thursday 6th March**
 - “Masked Reader” assembly
 - Guess the teacher’s favourite book
 - Swap a teacher story session
- Friday 7th March**
 - World Book day – Children can dress up as their favourite character and bring the book into school
 - Parent/Carer “share a story” afternoon – one parent or family member is invited in to school to share a story and book related activities including a “Book Quiz” £1 each (a letter and reply slip has been sent home)



HAPPY READING!



Science Fair - 14th March

It is time again to plan our annual Key Stage Science Fairs!

The focus of our Science Fair this year will be: 'change and adapt' in with the official theme for British Science Week 2025

If your child/ren would like to enter our very popular Science Fair, they must complete a test, survey, or experiment that shows a connection to 'change and adapt'.

- Project Due Date:- the morning of Friday 14th March.
- We will be hosting 2 Science Fairs:- KS1: 9:30am – 11:00am and KS2: 1:30pm – 3:00pm. Family members are invited to come and join in with the Science Fair and view the projects.
- Results and Prizes:- All winners will be announced on Monday 24th March during a whole school assembly. There will be Science prizes for the top 3 places for each Key Stage!
- Judges:- Are you free on Friday 14th March? Do you have a keen interest in Science? Would you be able to help judge the science fair? If so, please get in contact with the school office before Friday 7th March to volunteer.

We look forward to another fun filled Science Fair in school.
For more information see the letter emailed home!

Happy experimenting!
Mrs Atkinson

Trawden Forest
Primary School

SCIENCE FAIR!

Friday 14th March 2025
KS1: 9:30am - 11:00am & KS2: 1:30pm - 3:00pm
Theme: Change and Adapt

Science Week is a great time to think about how the world is changing and how we can adapt to those changes. What do change and adapt mean? How have you noticed the world around you changing and how have you adapted? How have animals adapted to new environments over time? Is ever-changing technology making our lives easier or are we adapting to fit it in? How have the places where we live changed? How does our immune system adapt to protect us against illnesses?

Adult Judges - Would you like to help judge our Science Fair? If so, please contact the School Office by **Friday 7th March**.

Swimming

Thursday afternoons – 09.01.24 – 03.04.25.

Swimming Kit - Towel and swimming costume (one piece), trunks or swimming shorts (NO longer than knee length) in an appropriate bag.

If your child has an inhaler this will also need to be in school, to be taken to the pool.

Swimming Caps - Both boys and girls, who have long hair (shoulder length or longer) will require a swimming cap. This is information taken from Pendle Leisure Centre.

Jewellery - This is not permitted in the pool. Therefore, earrings and watches should be removed by the children for that day or before leaving school and given to the teacher for safekeeping until they return.

Goggles - These may only be worn in exceptional circumstances (medical issues) due to safety reasons. These rules are based on Health and Safety regulations set down by Lancashire County Council and are non-negotiable. If your child has a medical reason for wearing goggles please request a permission form from the office, complete it and return it to the office before the first lesson.



Forest School



When it is our Forest School day, children will come to school in their “**Essential Forest School Kit**”.

On colder days children can also wear their own school jumper or cardigan if they wish (weather dependant).

On our Forest School days, children should bring their outdoor footwear – wellies/boots and waterproofs in a bag to change into.

Forest School Dates: Monday 3rd March, Monday 10th March, Monday 17th March, Monday 24th March & Monday 31st March.

Essential Forest School Kit – all children **MUST** bring the correct kit on their allocated day.

- plain black full legged tracksuit bottoms or leggings (no logos or stripes),
- plain black long sleeved quick dry logo top **new (* short sleeved in summer)
- waterproof coat
- * waterproof suit or trousers
- School shoes / **black** trainers (to wear inside school)
- boots / wellies
- spare socks
- hat and gloves / cap (weather dependant)

School Uniform



Forest School y1-y6

Girls

- school logo bottle green sweatshirt or cardigan
- white polo shirt
- green checked skirt / pinafore or plain black skirt / pinafore
- * black trousers
- white or black socks / black tights
- black school shoes
- * bottle green and white checked dress for summer

Boys

- school logo bottle green sweatshirt
- white polo shirt
- black school trousers
- white or black socks
- black school shoes
- * black school shorts for summer

P.E. Kit

- white round neck t-shirt
- black shorts
- black pumps (indoor)
- * plain black trainers (outdoor)
- drawstring pump bag

- plain black tracksuit bottoms/leggings
- plain black long sleeved quick dry logo top **new (* short sleeved in summer)
- waterproof coat
- * waterproof suit or trousers
- boots / wellies
- spare socks
- hat and gloves / cap (weather dependant)

Extras

- * bottle green school book bag
- * bottle green school logo coat
- * bottle green school logo fleece
- * named water bottle
- * green small logo ruck sack

NO jeans **NO** trainers or boots

NO jewellery, make-up or nail varnish

NO extreme hair cuts - long hair must be tied back
(watch and plain stud earrings only)

* = optional