

Greater than, less than

Put one of these signs, $<$, $>$, $=$, between each pair of numbers.

- 1** 709 907 **3** 424 442 **5** 399 401
2 135 134 **4** 201 102 **6** 279 297

Write a number which lies between each pair.

- 7** 365 370 **10** 123 132
8 990 992 **11** 699 705
9 501 511 **12** 550 555

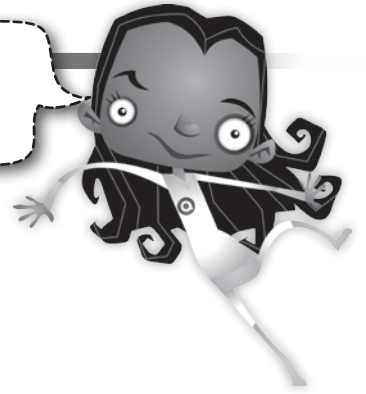
Adding and subtracting

Complete these additions and subtractions.

- 13** $42 + 38 =$ and $42 - 12 =$
14 $58 + 24 =$ and $58 - 26 =$
15 $65 + 17 =$ and $65 - 33 =$
16 $73 + 19 =$ and $73 - 31 =$

Pattern challenge!


Can you explain the pattern?




- 17 Compare the answers you wrote in each box for questions 14, 15 and 16.

What pattern do you notice?

I found this:

 Easy

 Challenging

 I needed help