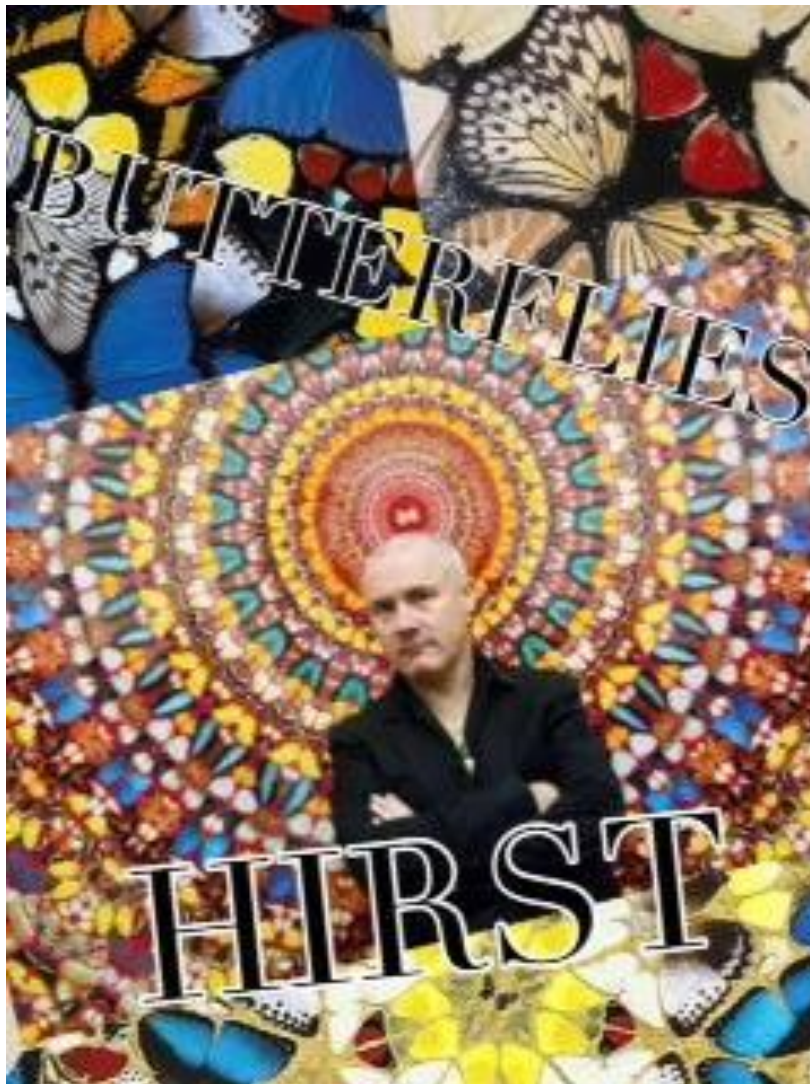


SYMMETRY



OBJECTIVES

- 1/ Develop knowledge of a chosen artist – Damien Hirst.
- 2/ Use information learnt about style to develop own image.
- 3/ Develop symmetrical drawing skills.
- 4/ Develop colouring skills.
- 5/ Develop critical evaluation skills.

NAME:

YEAR

Damien Hirst Born 1965

Damien Steven Hirst is an English artist, entrepreneur and art collector. He is the most prominent member of the group known as the Young British Artists (or YBAs), who dominated the art scene in the UK during the 1990s. He is internationally famous and is reportedly the United Kingdom's richest living artist, with his wealth valued at £215m in the 2010 Sunday Times Rich List. During the 1990s his career was closely linked with the collector Charles Saatchi, who was instrumental in making Hirst's work popular.

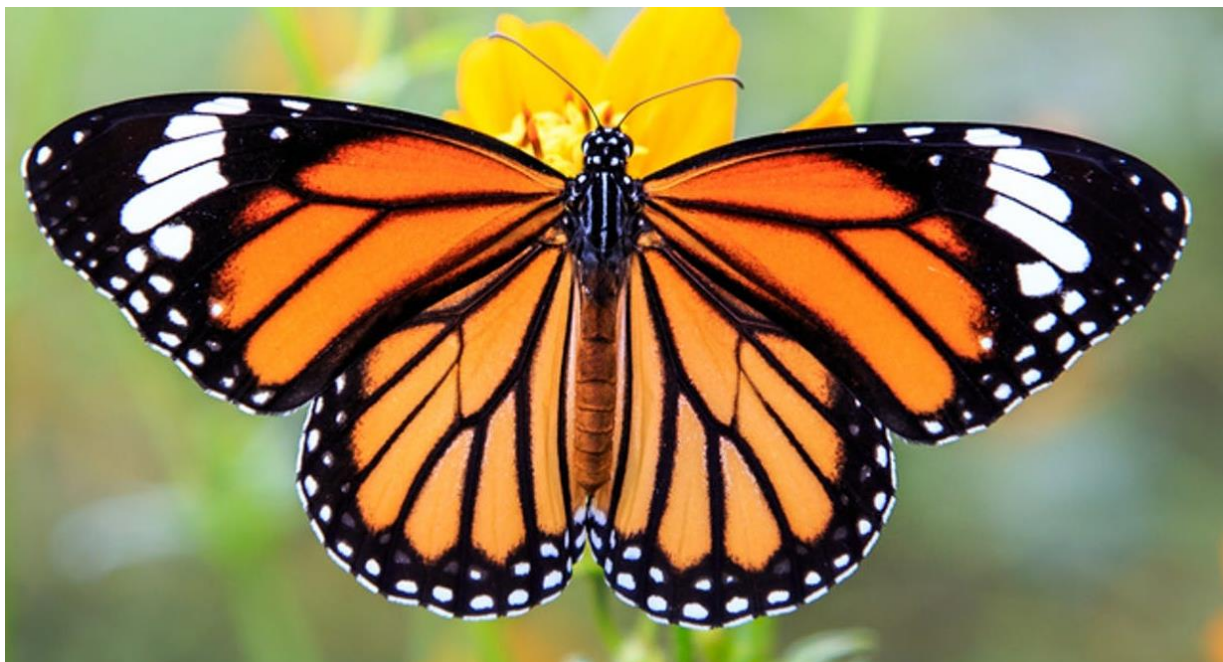
Death is a central theme in Hirst's works. He became famous for a series of artworks in which dead animals (including a shark, a sheep and a cow) are preserved, (sometimes having been dissected) in formaldehyde. The best known of these being *The Physical Impossibility of Death in the Mind of Someone Living*, a 4.3 m tiger shark immersed in formaldehyde in a vitrine (clear display case). He has also made "spin paintings," created on a spinning circular surface, and "spot paintings", which are rows of randomly coloured circles created by his assistants.



YOUR PROJECT

Look at the photographs of butterflies.

Pay attention to the patterns and colours in the wings.



Your Task

Select a photograph or combination of photographs to work from and draw a symmetrical butterfly image in the style of a stained glass window.

Consider including a decorative border like the ones shown in the examples below.

If you have pencil crayons, use them to add colour to your image.

If you do not have crayons, use your pencil to shade different sections with varying intensity to give different shades.



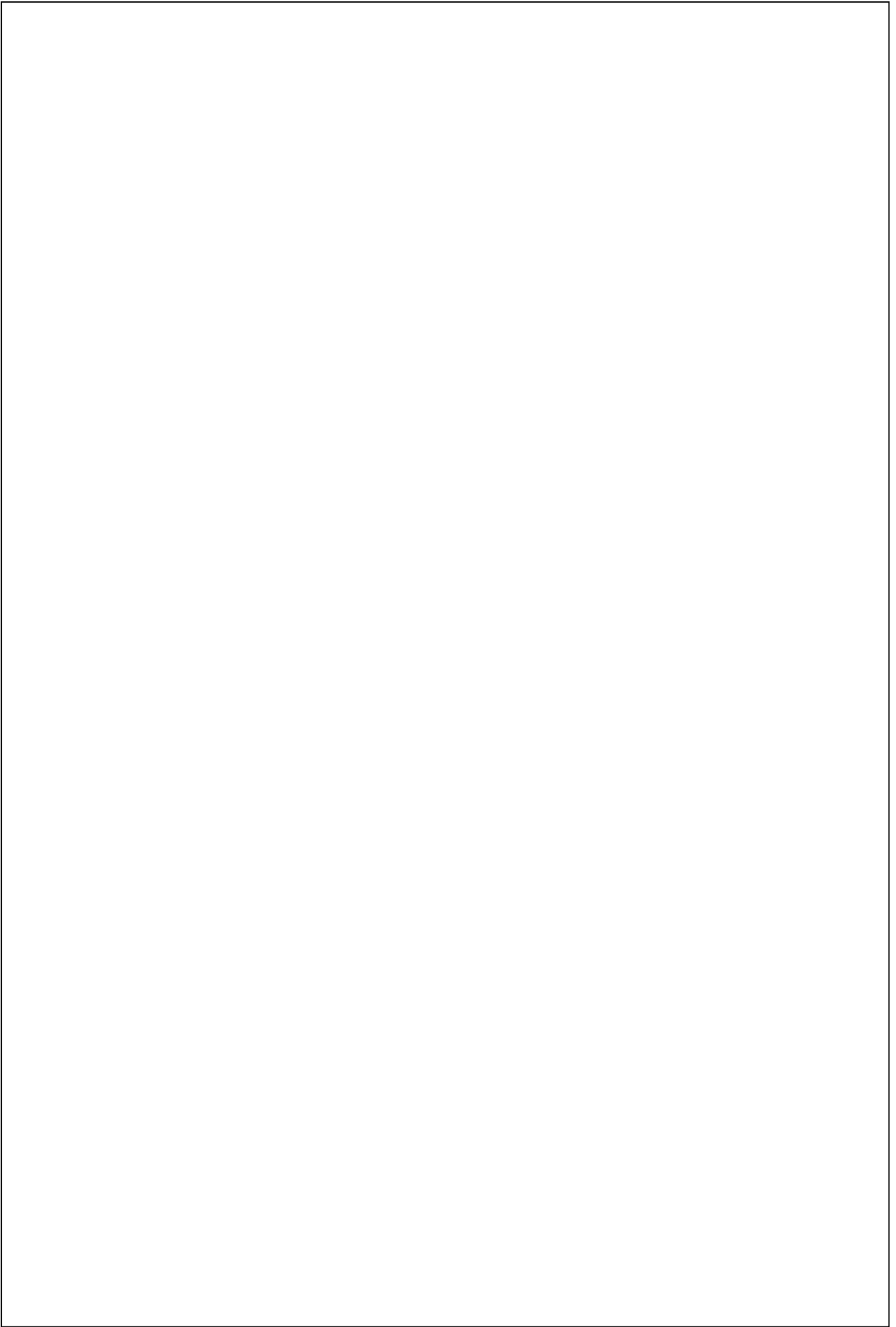
SPECIFIC VOCABULARY

Pattern – a decorative design, often repeated.

Symmetrical – having two parts that match exactly, when one half is like an image of the other half in a mirror.

Intensity – The strength of colour or shade.

Shade – The varying darkness of an image.



EVALUATION

What qualities do you like about your work? Explain your answer.

Is there anything that you dislike about your work? Why?

Write 3 facts about Damien Hirst.

1

2

3

What do you think about Damien Hirst's work? Explain your likes and dislikes.

Write the meanings for the following words:

Pattern –

Symmetrical –

Intensity –

Shade –