

# KO1:1 – Year 9 CONSTRUCTION Safety Signs and Risk Assessments

A standard safety sign system was introduced in 1980 for giving health and safety information with a minimum of words. This is an international system of safety signs and colours that draw attention to objects or situations that could affect health and safety.



**Prohibition** signs are red on a white background. They are circular with a red stripe across. They mean stop/must not do a certain activity such as operate machinery or use a forklift truck in a certain area.



**Warning** signs are triangular in shape and yellow and black. They warn you about definite hazards such as risk of general danger or explosions.

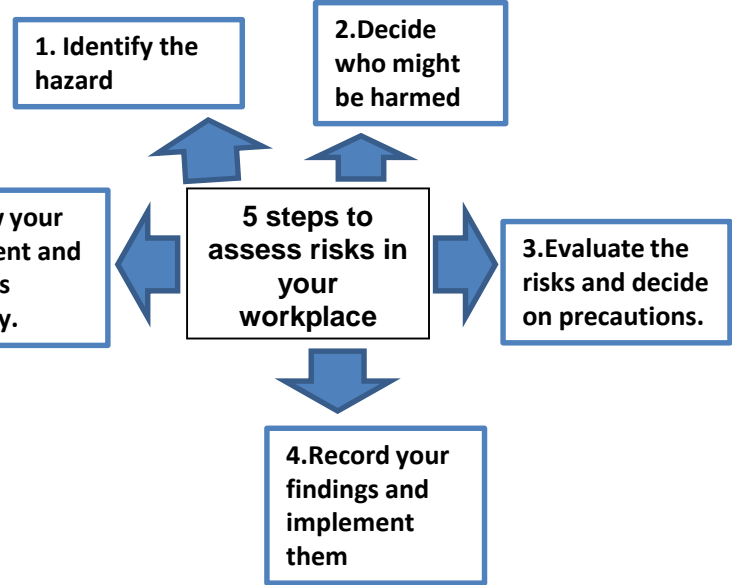


**Mandatory** signs are on a circular blue background. They tell you things you must do, i.e. wear a hard hat and foot protection on building sites.



**Safe condition** signs are green and white and square or rectangular in shape. They provide information about safe conditions such as fire exits or first aid.

**HASAWA-** This is the law that covers safety of all employees, employers and the public



## Risk Assessments

Risk assessment focuses on risks that really matter in the workplace – the ones that can cause real harm to people.

Employers are expected to protect their workers as far as is **reasonably practicable**.

A **hazard** is anything that may cause harm, such as chemicals, electricity, working at height, poorly stored or stacked timbers, using machinery.

The **risk** is the chance that someone could be harmed by these or other hazards. Risk is rated as low, medium or high.

**Management of Health and Safety at work regulations 1999** impose a duty on employers to carry out risk assessment

## Safety Signs and Risk Assessments

Use the following questions to check your knowledge.

What law states employees, public and employers must remain safe?

What are the 5 steps to a risk assessment?

Explain each stage of the risk assessment ?

What shape and colour is a mandatory sign? What does mandatory mean?

What shape and colour is a prohibition sign? What does prohibition mean?

What type of sign is a green square box and what does it mean?

Explain the main risks that could occur on a construction site .

Draw as many of your own signs representing the warning symbol

### KEY VOCABULARY

Employees – People working for someone.

Employer- A person, company, or organization that pays people to work for them.

Legislation- Another word that means law.