

# Good to Outstanding Y11 Parents' Information Evening

Tuesday 17<sup>th</sup> September  
2024



# Agenda for the Evening

- Good to Outstanding Journey - Mr Fair
- Assessment and Reporting cycle in Y11
- How school/parents/carers can support revision
- iPad GCSE Revision Strategies
- The transition from Y11 to post-16 education and training



# Good to Outstanding Journey

## Year 1/4 – Your Y8

Post pandemic recover plan, iPad pilot, changed assessment, Gateway app, changed target setting, Y11 mentoring, Mental Health award, Twitter.

## Year 2/4 – Your Y9

Careers 100% Gatsby coverage, iPads for all, attendance above national average, student leadership relaunch, opened new 6 classroom block.

## Year 3/4 – Your Y10

New Vision, Culture & Values, new website, new library, rainbow award, new astroturf, collaborate with new SEMH school, Excellence in Personal Development Award

## Year 4/4 - Your Y11

Renovate sports hall, eco-garden, new MIS, refresh rewards, adaptive teaching, professional learning curriculum to improve pedagogy



# Good to Outstanding Journey



## VISION, CULTURE AND VALUES

**"To drive the academic and character development of learners, so that they may shape wider society and the communities they inhabit."**

**"Character shapes society,"** abbr.

The above is our vision and raison d'être. We are unashamed in our use of the word drive. Providing the energy to support young people to success is crucial. We recognise this and we are proud of how we do it. We, also, facilitate and nurture to create our unique culture at Unsworth Academy. There are three main principles that underpin our culture:

**Individual Ownership**

Accountability, self-discipline and a bespoke approach to realise personal potential.

**Holistic Development**

Academic and character progression are of equal importance.

**Community Strength**

A school community within a wider community that grows through collective collaboration.

The following six value statements characterise our behaviours. By being a member of the Unsworth Academy community, children and adults commit to these sacrosanct and authentic beliefs:

**Be excellent.**

All members of our school community aspire to excellence in all that they do.

**Be organised.**

All members of our school community believe that a foundation of personal organisation is key.

**Be resilient.**

All members of our school community strive to be resilient when faced with adversity.

**Be kind.**

All members of our school community show empathy and concern for others.

**Be inclusive.**

All members of our school community value diversity and actively embrace difference.

**Be moral.**

All members of our school community consider the principles of right and wrong behaviour.



# Unsworth Academy - GCSE Headlines 2022-24

Headline Measures	2022	2023	2024	2025
Progress 8	0.17	0.09	0.20	?
Attainment 8	50.00 (49.13)	47.37 (46.47)	46.47 (46.15)	?
% English & Maths Grade 4+	75.2 (69.5)	69.1 (65.5)	66 (65)	?
% English & Maths Grade 5+	52.6 (49.6)	42.0 (44.8)	39 (45)	?

# Top Performers

Name	9	8	7	6/5	L2D*	L2D/L2M	Avg Grade
Student A	7	1					8.88
Student B	5	3			1		8.61
Student C	6	2				1	8.39
Student D	3	4	1		1		8.28
Student E	2	6			1		8.28
Student F	3	2	3		1		8.06
Student G	3	5				1	8.06
Student H	2	4	3				7.89
Student I	2	5		2	1		7.75
Student J	2	1	3	2	1	1	7.45
Student K		5	3	1			7.44

# Students who made great progress:

## Student L

Low SATs scores at Primary

Construction	L2D
English Lang	5
English Lit	5
Geography	6
Maths	4
Photography	5
Science	55

## Student M

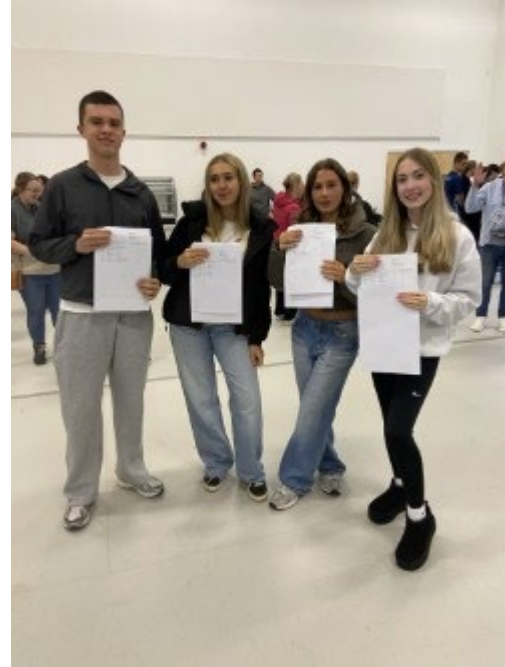
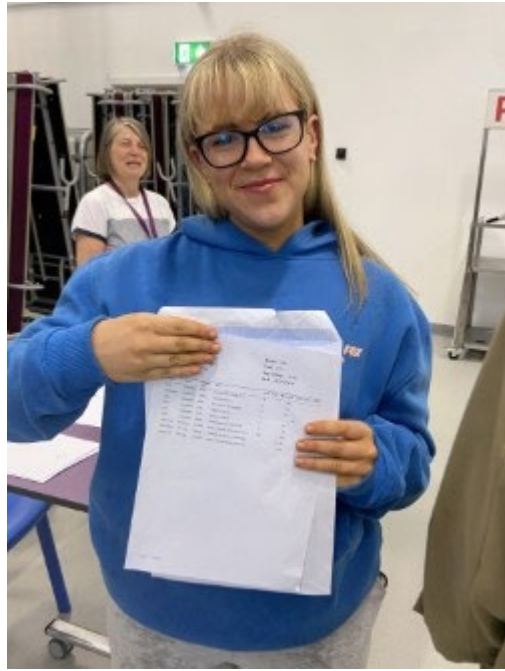
Spoke little English when joined in Year 7

English Lang	7
English Lit	6
I Media	L2D
Maths	7
Photography	9
Spanish	8
Biology	6
Chemistry	5
Physics	6

## Student N

Very nearly PEX in Y8

Construction	L2D*
English Lang	6
English Lit	7
History	6
Maths	4
Science	66
Sport	L2D







# Agenda for the Evening

- Good to Outstanding Journey
- **Assessment and Reporting cycle in Y11 – Mr Orrell**
- How school/parents/carers can support revision
- iPad GCSE Revision Strategies
- The transition from Y11 to post-16 education and training



# Year 11 Assessment and Reporting Cycle 2024/25

Event/Exams/Reports/Parent's Evenings	Date
College Presentations	Monday 16 <sup>th</sup> to Friday 20 <sup>th</sup> September 2024
Bury Careers Event – Castle Leisure Centre	Wednesday 18 <sup>th</sup> September 2024 – 3.30pm to 7pm
Year 11 Mock Interview Day	Friday 18 <sup>th</sup> October 2024
Mock Exams 1	Tuesday 5 <sup>th</sup> to Friday 15 <sup>th</sup> November 2024
Autumn Progress Report	Week beginning 2 <sup>nd</sup> December 2024
<b>Year 11 Parents' Evening</b>	<b>Thursday 5<sup>th</sup> December 2024</b>
<b>Christmas Holidays – ALL COLLEGE APPLICATIONS SUBMITTED</b>	
Mock Exams 2	Tuesday 11 <sup>th</sup> February to Friday 28 <sup>th</sup> February 2025 (Half term in the middle of the exams)
Spring Progress Report	Week beginning 17 <sup>th</sup> March 2025
<b>Year 11 Parents' Evening</b>	<b>Thursday 20<sup>th</sup> March 2025</b>
<b>Easter Holidays – REVISION, REVISION, REVISION</b>	
GCSE Exams begin	Monday 12 <sup>th</sup> May 2025
GCSE Exams end	Wednesday 18 <sup>th</sup> June 2025
School Prom	Thursday 26 <sup>th</sup> June 2025
GCSE Results	Thursday 22 <sup>nd</sup> August 2025

# Progress Update - Example

Name: Joe Bloggs Form: 11U

Subject	Working at Grade	Y11 Unsworth GCSE Target	Effort
English Language	4	6	Good
English Literature	4+	6	Good
Maths	5-	6	Outstanding
Construction	L2M+	L2D	Outstanding
Geography	4+	5	Outstanding
Btec Sport	L2M+	L2D	Outstanding
Science Trilogy	33	77	Below Standard

Percentage Attendance	Total Possible Sessions	Authorised Missed Sessions	Unauthorised Missed Sessions	Late Sessions	MVP	Achievement Points	Behaviour Points
99.7	358	0	1	1	13	91	0

<b>Outstanding</b>	<b>Good</b>	<b>Below Standard</b>
--------------------	-------------	-----------------------

# Progress Update - Example

## Reading Age

<b>Assessment</b>	<b>Autumn Term</b>	<b>Spring Term</b>	<b>Summer Term</b>
Chronological Reading Age			
Reading Age			

Pupils will be tested 3 times a year to check their reading age. Their reading age will be stated in years and months (13.5), a proficient reading age to access examination papers is 15. A pupil's reading age should be in line with their chronological (actual) age.

# GCSE Exams 2024

- 2024 GCSE examinations dates have been confirmed. (You have a copy of the timetable in your handouts tonight)
- During GCSEs Normal lessons continue – NO STUDY LEAVE.
- Bespoke timetable constructed for the final exam preparations. Starting at the beginning of the examinations.
- **Period 6 – two blocks before each sets of mock exams. They started tonight!**



# Agenda for the Evening

- Good to Outstanding Journey
- Assessment and Reporting cycle in Y11
- How school/parents/carers can support revision – Mr Fordham and Ms Upton
- iPad GCSE Revision Strategies
- The transition from Y11 to post-16 education and training



# **Year 11 – Head of Progress**

Mr Fordham

# **Year 11 – Pastoral Leader**

Miss Steele





# Year 11 Form Mentors

11U – Mrs Davies

11N – Mr Loftus

11S – Mrs Grimshaw

11W – Mrs Steer

11O – Miss White

11R – Mrs Hanmer

11T – Miss Burns

11H- Mrs Ross



# Support from School

- Analyse assessment data
- Identify learners who need support
- Liase with Head of department to provide bespoke strategies for intervention
- Parental contact
- Mentorship programme

# Additional Support

- Careers Adviser - Mr Welch
- College applications
- Maths/English intervention
- Pastoral support
- Easter/May half term revision sessions
- Rev up sessions



# Period 6 Overview

Week	Dates (2024)	Exams
3	16 Sept - 20 Sept	Period 6 - Wk 1
4	23 Sept - 27 Sept	Period 6 - Wk 2
5	30 Sept - 4 Oct	Period 6 - Wk 3
6	7 Oct - 11 Oct	Period 6 - Wk 4
7	14 Oct - 18 Oct	Period 6 - Wk 5
<b>OCTOBER HALF TERM</b>		
8	28 Oct - 1 Nov	Period 6 - Wk 6
9	4 Nov - 8 Nov	Y11 Mocks 1 Wk 1
10	11 Nov - 15 Nov	Y11 Mocks 1 Wk 2
11	18 Nov - 22 Nov	
12	25 Nov – 29 Nov	
13	2 Dec - 6 Dec	
14	9 Dec - 13 Dec	
15	19 Dec - 20 Dec	

Week	Dates (2025)	Exams
16	6 Jan - 10 Jan	Period 6 - Wk 1
17	13 Jan - 17 Jan	Period 6 - Wk 2
18	20 Jan - 24 Jan	Period 6 - Wk 3
19	27 Jan – 31 Jan	Period 6 - Wk 4
20	3 Feb - 7 Feb	Period 6 - Wk 5
21	10 Feb - 14 Feb	Y11 Mocks 2 Wk 1
<b>FEBRUARY HALF TERM</b>		
22	24 Feb – 28 Feb	Y11 Mocks 2 Wk 2
23	3 Mar - 7 Mar	
24	10 Mar - 14 Mar	
25	17 Mar - 21 Mar	
26	24 Mar - 28 Mar	
27	31 Mar – 4 April	
<b>EASTER HOLIDAYS</b>		

## Period 6 – After School Classes (3.05pm to 4.00pm)

**Start date – Tuesday 17<sup>th</sup> September (Week 1)**

Week	Day	Subject	Option Subjects
1	Tuesday	Option L	Spanish, Design & Technology, Religious Studies
1	Wednesday	English	
1	Thursday	Option K	History, Computer Science, I-Media, Hospitality & Catering
2	Tuesday	Option J	Geography, Music
2	Wednesday	Maths	
2	Thursday	Science	

Those learners taking Art, Photography, Performing Arts, Sports Studies and Construction, their teachers will invite them when needed for focused support.

# Non-Negotiables

- 96% Attendance is our minimum
- Punctuality to school and lessons
- Correct Uniform
- Equipment (charged i-PADS) and School Bag
- Attitude to learning



Let's hear from  
Aemen...a recent  
year 11 student  
starting her  
college journey...



# DfE Research Report

Your role is very important!

*“School improvement and school effectiveness research consistently shows that parental engagement is one of the key factors in securing higher student achievement. The impact is evident across all social classes and ethnic groups.”*



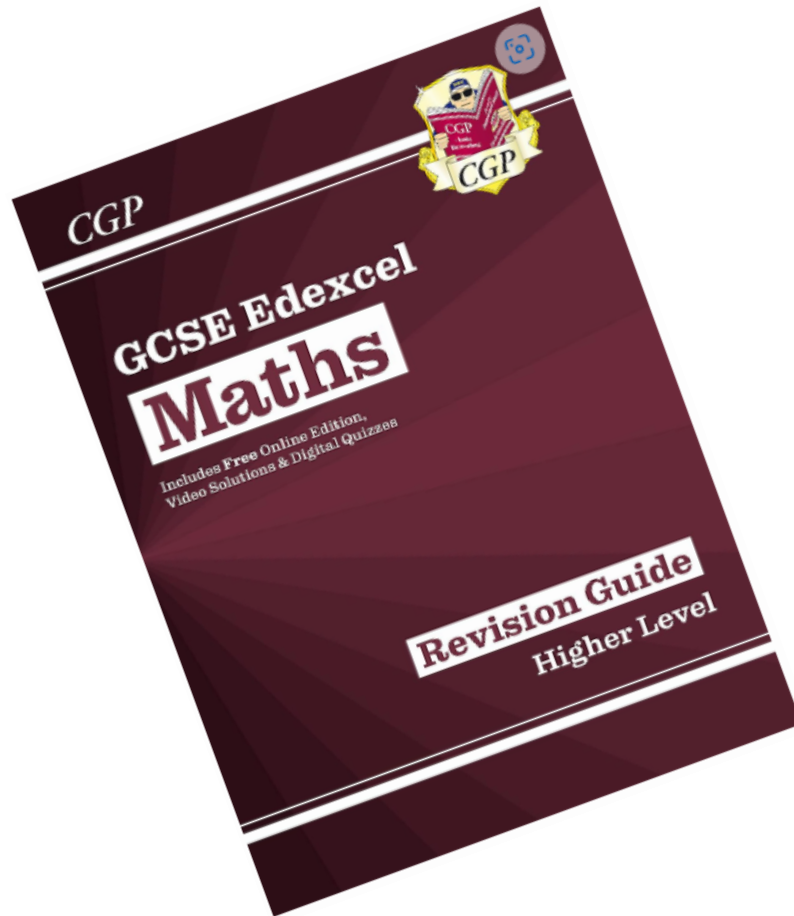
# What can you do to support your child in achieving the best possible results?

- Encourage your child to attend period 6 revision lessons
- Try to provide a space and an environment conducive to revision
- Encourage your child to make a (realistic) timetable of the revision they intend to complete each day and check they have completed it
- Encourage revision with regular breaks (20-50 minutes at a time)
- Keep in regular communication with school (form mentor initially, HOP, pastoral manager, subject teachers)
- Attend parents' evenings so you are aware of how well your child is doing in different subject areas
- Encourage your child to revise for mock exams
- Talk to them about the bigger picture
- Discuss revision strategies with your child



# What might your child's revision look like?

## 1) Revision guides



**Contents**

<b>Section One — Number</b>	
Types of Number and BODMAS	2
Multiples, Factors and Prime Factors	3
LCM and HCF	4
Fractions	5
Fractions, Decimals and Percentages	7
Fractions and Recurring Decimals	8
Rounding Numbers	10
Estimating	11
Bounds	12
Standard Form	13
Revision Questions for Section One	15
<b>Section Two — Algebra</b>	
Algebra Basics	16
Powers and Roots	17
Multiplying Out Brackets	18
Factoring	19
Manipulating Surds	20
Solving Equations	21
Rearranging Formulas	23
Factorising Quadratics	25
The Quadratic Formula	27
Completing the Square	28
Algebraic Fractions	30
Sequences	31
Inequalities	33
Graphical Inequalities	35
Iterative Methods	36
Simultaneous Equations 1	37
Simultaneous Equations 2	38
Proof	39
Functions	41
Revision Questions for Section Two	42
<b>Section Three — Graphs</b>	
Straight Lines and Gradients	43
$y = mx + c$	44
Drawing Straight-Line Graphs	45
Coordinates and Ratio	46
Parallel and Perpendicular Lines	47
Quadratic Graphs	48
Harder Graphs 1	49
Harder Graphs 2	50
Harder Graphs 3	51
Solving Equations Using Graphs	52
Graph Transformations	53
Real-Life Graphs	54
Distance-Time Graphs	55
Velocity-Time Graphs	56
Gradients of Real-Life Graphs	57
Revision Questions for Section Three	58
<b>Section Four — Ratio, Proportion and Rates of Change</b>	
Ratios	59
Direct and Inverse Proportion	62
Percentages	64
Compound Growth and Decay	67
Unit Conversions	68
Speed, Density and Pressure	69
Revision Questions for Section Four	70
<b>Section Five — Geometry and Measures</b>	
Geometry	71
Parallel Lines	72
Geometry Problems	73
Polygons	74
Triangles and Quadrilaterals	75
Circle Geometry	76
Congruent Shapes	78
Similar Shapes	79
The Four Transformations	80
Area — Triangles and Quadrilaterals	82
Area — Circles	83
3D Shapes — Surface Area	84
3D Shapes — Volume	85
More Enlargements and Projections	87
Triangle Construction	88
Locs and Construction	89
Locs and Construction — Worked Examples	91
Bearings	92
Revision Questions for Section Five	93

Throughout this book you'll see **grade stamps** like these. You can use these to focus your revision on easier or harder work. But remember — to get a top grade you have to know **everything**, not just the hardest topics.

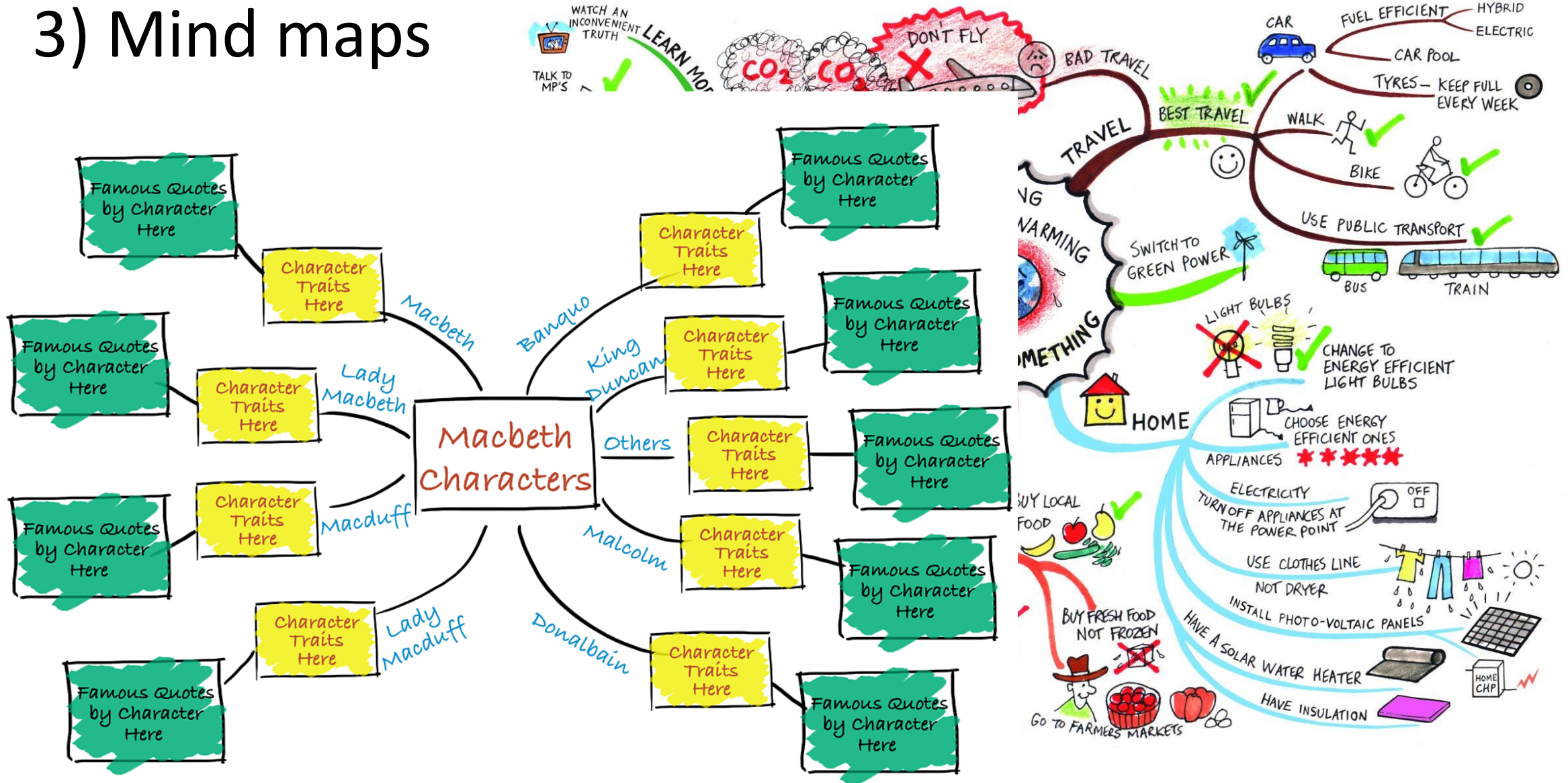
9 5 7 6

RAG rate topics to prioritise revision



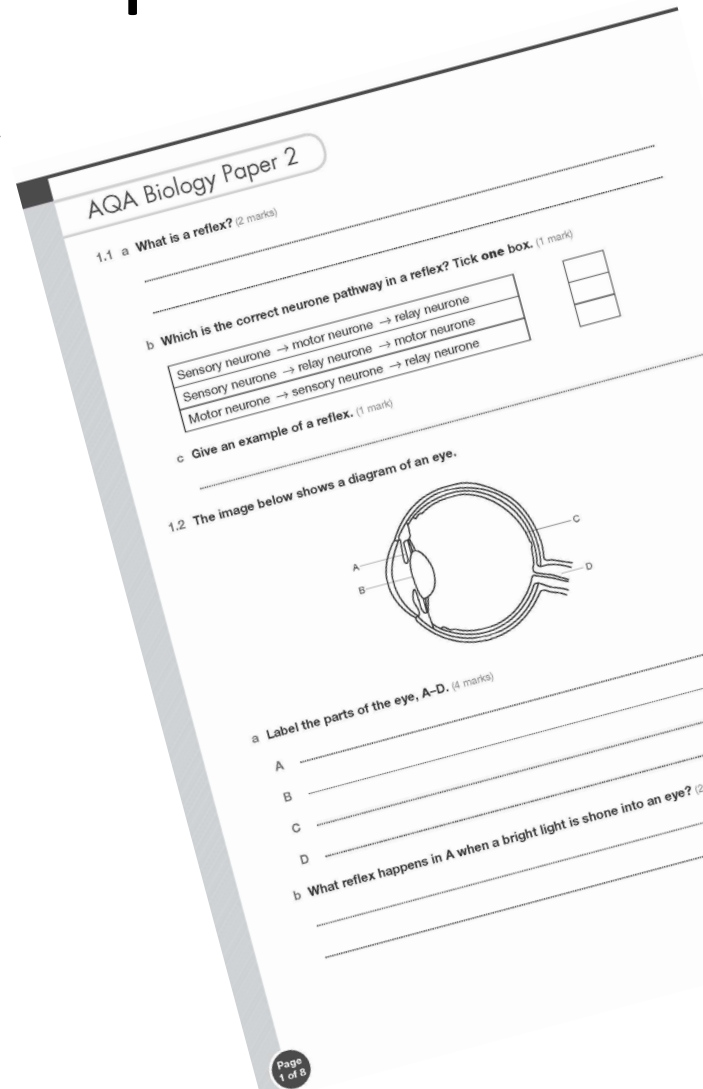
# What might your child's revision look like?

## 3) Mind maps

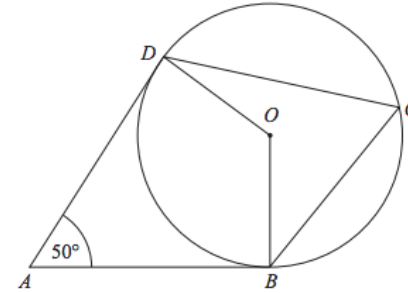


# What might your child's revision look like?

## 4) Past paper questions and mark schemes



\*21



$B$ ,  $C$  and  $D$  are points on the circumference of a circle, centre  $O$ .  
 $AB$  and  $AD$  are tangents to the circle.

Angle  $DAB = 50^\circ$

Work out the size of angle  $BCD$ .  
Give a reason for each stage in your working.

(Total for Question 21 is 4 marks)



# What might your child's revision look like?

## 5) Quick fire questions

Ask a series of 4-5 questions after your child has done a period of revision

What can they remember?

What do they still need to work on?



# What might your child's revision look like?

6) Active revision techniques such as 'look, say, cover, write, check.'

This could be useful if you are trying to remember a particular quote from a text or formula, for example...



# Agenda for the Evening

- Good to Outstanding Journey
- Assessment and Reporting cycle in Y11
- How school/parents/carers can support revision
- iPad GCSE Revision Strategies - Mrs Isles
- The transition from Y11 to post-16 education and training





# iPad GCSE Revision Strategies

One of the most effective ways of revising is being tested on knowledge and then recovering knowledge that cannot be recalled.

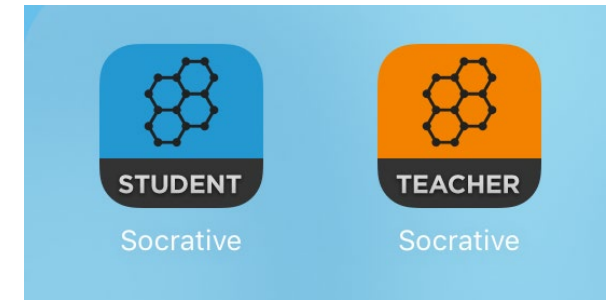
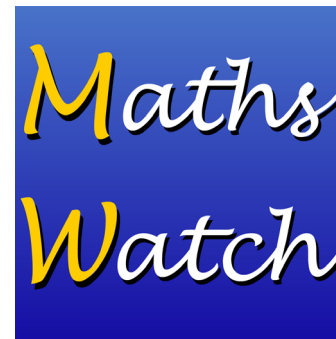
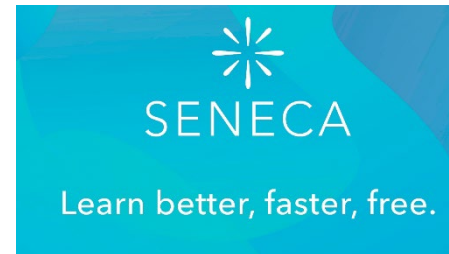
The benefits of iPad revision is that digital systems can adapt to a child's individual strengths and areas for development.



# iPad learning – enhance T&L

Sparx

How to revise effectively



Office 365 Education  
Enhancing collaboration and productivity



# For example, Seneca...

09:19 Fri 8 Sep

AA app.senecalearning.com

Back to assignment creation

SENECA

Overview

☆ Exam Prep **New**

Assignments

Ask Amelia

Atomic Structure > Atoms & Elements >  
Elements & Compounds  
**Good morning, Victoria!**

1 Atomic Structure

1.1 Atoms & Elements

1.1.1 Elements & Compounds

1.1.2 Chemical Reactions & Equations

1.1.3 Mixtures

1.1.4 Model of the Atom

Start learning

# For example, Brillder...


09:31 Fri 8 Sep


AA app.brillder.com

Subjects, Topics, Titles & more

Public Personal

## Power and Conflict Poetry

100 bricks found  Create a new one




40 min

Wordsworth's *Prelude*, Stealing the Boat

$$\begin{matrix} (x^2)^{\frac{1}{2}} & \cdot & (x^{\frac{1}{2}})^2 \\ \downarrow & & \downarrow \\ (x^{\frac{1}{2}})^2 & & \end{matrix}$$


40 min

Power Rules



40 min

'War Photographer' by Carol Ann Duffy



40 min

'London' by William Blake


1-4 | 100  
1 | 25

BETA

**Sort By**

Relevance

**Filter**

Competition Arena 

Level I  Level II  Level III


20 mins  40 mins  60 mins

**Subjects**

My Subjects  All Subjects

All  ^  v

- Art & Design
- Biology, Health & Care
- Business Studies
- Chemistry
- Chinese
- Classics
- Computer Science
- Criminology
- Design & Technology
- Drama & Theatre

 Help

For  
example,  
Quizlet...

09:47 Fri 8 Sep

AA quizlet.com

'War Photographer' by Carol Ann Duffy

GCSE PHYSICS EQUATIONS Flashcards | Quizlet

Quizlet Home Your library What's new Study sets, textbooks, questions

Science / Physics

# GCSE PHYSICS EQUATIONS

11 studiers today Leave the first rating

In-class activity

Classic Live Checkpoint

Self-study activity

Flashcards Learn Test Match Q-Chat

Get a hint

Weight = mass x gravitational field strength

# For example, Showbie

◀ Search 09:38 Fri 8 Sep

📅 < All Classes

Edit ⚙️

## 11A/En3

🔍 Search

🗨️ Class Discussion  
paused

☰ All Assignments >  
137 assigned / 5 collected

📁 DAY BEFORE THE EXAM! >  
10 assignments / 2 folders

📁 THE QUOTATION BANK BOOKS >  
3 assignments

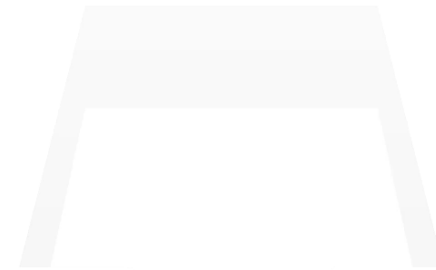
📁 REVISION VIDEO FILES >  
1 folder

📁 Romeo and Juliet - Savannah >  
2 assignments / 2 folders

📁 EXAM PAPERS - REVISION >  
10 assignments

📁 English Language >  
3 folders

📁 A Christmas Carol >  
1 assignment / 9 folders



Here is another reflection from Dom who has also recently left Unsworth...



# Agenda for the Evening

- Good to Outstanding Journey
- Assessment and Reporting cycle in Y11
- How school/parents/carers can support revision
- iPad GCSE Revision Strategies - Ms Koval
- The transition from Y11 to post-16 education and training - Mr Orrell









# Preparing for Post-16 Pathways

- This week - College assemblies
- Holy Cross, Bury College, Salford Colleges, Hopwood Hall & Bolton College
- Discussions regarding post-16 pathways
- Applications to at least **TWO** post-16 providers
- Mock Interview day Friday 18th October – a CV will be required
- College application deadlines in your information pack.



# College Open Events

Colleges/Sixth Forms		Applications Open	Applications Close
<b>Bolton College</b> 	Tuesday 15 <sup>th</sup> Oct 2024. 5pm - 8pm Wednesday 13 <sup>th</sup> Nov 2024. 5pm - 8pm Thursday 12 <sup>th</sup> Dec 2024. 5pm - 8pm Wednesday 12 <sup>th</sup> Feb 2025. 5pm - 8pm Thursday 20 <sup>th</sup> March 2025. 5pm – 8pm	Date to be confirmed	Date to be confirmed
<b>Bury College</b> 	Tuesday 1 <sup>st</sup> Oct 2024. 5pm – 7.30pm Thursday 10 <sup>th</sup> Oct 2024. 5pm – 7.30pm Saturday 23 <sup>rd</sup> Nov 2024. 10.30am – 1pm Thursday 20 <sup>th</sup> March 2025. 5.00 – 7.30pm	1 <sup>st</sup> Oct 2024	Priority Application 25 <sup>th</sup> Nov 2024
<b>Holy Cross Sixth Form</b> 	Saturday 5 <sup>th</sup> Oct 2024. 10am - 1pm Monday 14 <sup>th</sup> Oct 2024. 5pm – 8pm	5 <sup>th</sup> Oct 2024	2 <sup>nd</sup> Dec 2024
<b>Hopwood Hall College</b> 	Saturday 5 <sup>th</sup> Oct 2024. 10.30am – 1.30pm Wednesday 23 <sup>rd</sup> Oct 2024. 4.30pm – 6.30pm Wednesday 20 <sup>th</sup> Nov 2024. 4.30pm – 6.30pm	27 <sup>th</sup> Sept 2024	29 <sup>th</sup> Nov 2024

<p><b>Salford City Colleges:</b> <b>City Skills</b></p> 	<p>Monday 23<sup>rd</sup> September 2024. 5pm – 7pm Saturday 2<sup>nd</sup> November 2024. 10am – 12pm Monday 10<sup>th</sup> February 2025. 5pm – 7pm</p>	<p>8<sup>th</sup> Sept 2024</p>	<p>31<sup>st</sup> January 2025* Early applications to secure Construction courses</p>
<p><b>Salford City Colleges: Eccles Sixth Form College</b></p> 	<p>Thursday 26<sup>th</sup> September 2024. 5pm - 7pm Wednesday 30<sup>th</sup> October 2024. 5pm - 7pm Monday 10<sup>th</sup> February 2025. 5pm - 7pm</p>	<p>8<sup>th</sup> Sept 2024</p>	<p>31<sup>st</sup> January 2025 (For T Level Health applications - 31<sup>st</sup> Dec 2024)</p>
<p><b>Salford City Colleges: Future Skills at Media City UK</b></p> 	<p>Wednesday 25<sup>th</sup> September 2024. 5pm - 7pm Saturday 2<sup>nd</sup> November 2024. 10am - 12pm Tuesday 10<sup>th</sup> December 2024. 5pm – 7pm</p>	<p>8<sup>th</sup> Sept 2024</p>	<p>31<sup>st</sup> January 2025</p>
<p><b>Salford City Colleges: Pendleton Sixth Form College</b></p> 	<p>Saturday 21<sup>st</sup> September 2023. 10am - 12pm Thursday 31<sup>st</sup> October 2024. 5pm – 7pm Wednesday 11<sup>th</sup> December 2024. 5pm - 7pm</p>	<p>8<sup>th</sup> Sept 2024</p>	<p>31<sup>st</sup> January 2025</p>
<p><b>Salford City Colleges: Worsley College</b></p> 	<p>Tuesday 24<sup>th</sup> September 2024. 5pm - 7pm Tuesday 29<sup>th</sup> October 2024. 5pm - 7pm Wednesday 12<sup>th</sup> February 2025. 5pm - 7pm</p>	<p>8<sup>th</sup> Sept 2024</p>	<p>31<sup>st</sup> January 2025</p>

# **Bury** Careers Event

Wednesday 18th September 2024

3:30pm – 7.00pm Castle Leisure Centre

# Apprenticeships

If any students are hoping to follow the apprenticeship route, it is important to be aware that if you apply to college to do an apprenticeship, it is up to you, the applicant to find an employer who is willing to offer you a job.

Colleges may have a bank of employers that they have worked with in the past, so make sure you ask them. You can use social media (Facebook/LinkedIn) to look for local vacancies or if you have an account, post on there that you are looking for an employer.

More guidance in your information pack



# SEND Support – Mrs Jones

- Access Arrangements for Year 11 Exams are already in place. This includes extra time, reader pens, prompter and laptop use.
- Learners will be using these throughout the year during internal exams to ensure they are familiar with them.
- Any SEN concerns then please contact Mrs Atkinson – SENCO



**27 School Weeks and 3 days left**

**to the start of the GCSE Exams**

**EVERY** second in **EVERY** lesson counts.

The countdown has begun.





Shaw Education Trust Head  
Office  
Kidsgrove Secondary School  
Gloucester Road  
Kidsgrove  
ST7 4DL

Twitter: @shawedutrust  
Tel: 01782 742910  
Email: info@shaw-education.org.uk  
Online: www.shaw-education.org.uk



Parr Lane  
Bury  
BL9 8LP

Twitter: @UnsworthAcademy  
Tel: 0161 796 9820  
Email: information@unsworth.set.org  
Online: www.unsworthacademy.org.uk