

Exceptional Unsworth Y10 Parents' Information Evening

Tuesday 16th September

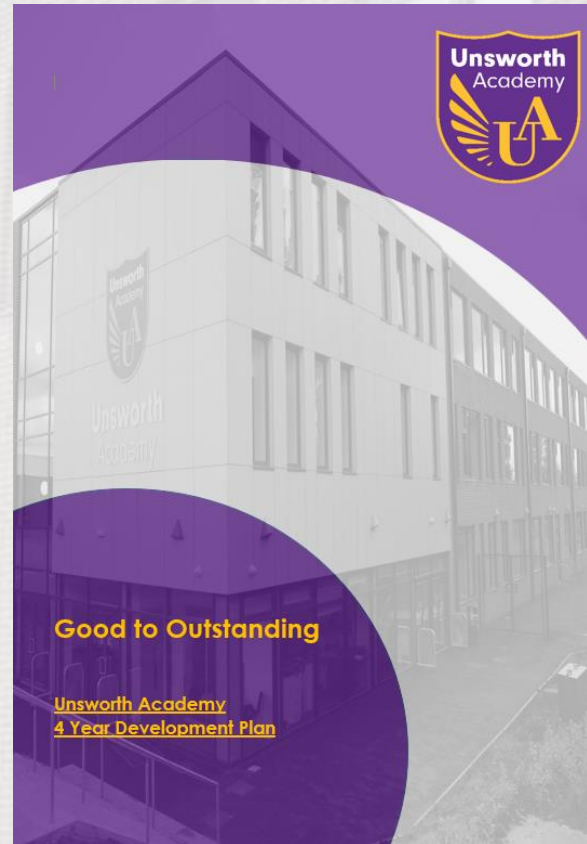


Agenda for the Evening

- Exceptional Unsworth 2028 - Mr Fair
- Assessment and Reporting cycle in Y10 – Mrs Isles
- Support and intervention in Y10 – Ms Pickup
- How parents and carers can support revision - Mr Leyland
- Post-16 education and careers – Mrs Isles



Year 1 – 21 22
Year 2 – 22 23
Year 3 – 23 24
Year 4 – 24 25





Superb GCSE Results in the summer!

Science Trilogy	42%	Grades 55 to 99
Geography	23%	Grade 7 to 9
Spanish	62%	Grade 5 to 9
Art	89%	Grade 4 to 9
Sport	91%	L2P to L2D*
Construction	89%	L2P to L2D*
H&C	64%	L2M to L2D*



Top Performers (based on average grade)

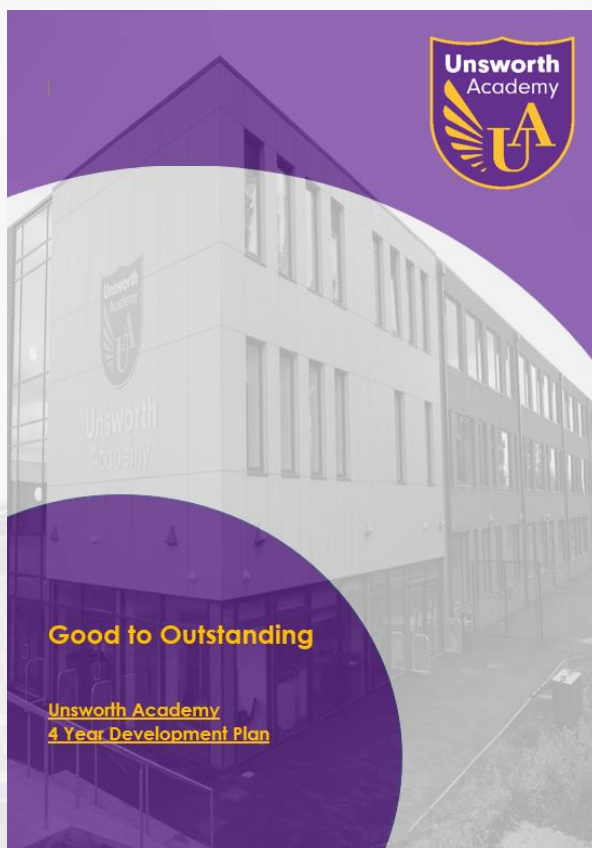
Name	9	8	7	6/5	L2D*	L2D/L2M	Avg Grade
Student A	7	1			1		8.83
Student B	4	4					8.50
Student C	3	3	2				8.13
Student D	3	3	2			1	7.83
Student E	1	3	2		1	1	7.81
Student F	2	2	3	1	1		7.72
Student G	2	3	2	1			7.63
Student H	4	1	1	3			7.56
Student I		5	2	1			7.50
Student J		5	2	1		1	7.44

Special Success Stories

Student K – 4, 4, 5, 5, 55, L2M, L2M

Student L – 5, 5, 5, 65, 6, 6, L2M





Exceptional Unsworth 2028



Unsworth Academy 3 Year Development Plan



Page | 1

Year 1 – 25 26
Year 2 – 26 27
Year 3 – 27 28



KEEP

- Vision, values, culture.
- T&L foci.
- Agility in planning.
- Commitment to “being nice.”
- Clear systems.
- How we train the staff team.

CHANGE

- Curriculum design.
- Use of technology.
- Leadership development.
- Student Leadership development.
- Careers education.
- School site.





Agenda for the Evening

- Exceptional Unsworth 2028 - Mr Fair
- Assessment and Reporting cycle in Y10 – Mrs Isles
- Support and intervention in Y10 – Ms Pickup
- How parents and carers can support revision - Mr Leyland
- Post-16 education and careers – Ms Isles



Year 10 Assessment and Reporting Cycle 2025/26

Event/Exams/Reports/Parent's Evenings	Date
College Presentations	Week Commencing Monday 15th September
Careers Drop Down (Periods 1 & 2)	Friday 24th October
Autumn Progress Report	Week commencing 15th December
Christmas Holidays	
Year 10 Parent's Evening	Thursday 22nd January (4pm-7pm)
Careers Drop Down (Periods 1 & 2)	Tuesday 24th March
Spring Progress Report	Week commencing 30th March
Easter Holidays	
Work Experience	Monday 27th April – Friday 1st May
Internal Exams begin	Tuesday 16th June
Internal Exams end	Friday 26th June
Summer Progress Report	Week commencing 14th July
Careers Drop Down session	Tuesday 15th July

Progress Update - Example

Name: Joe Bloggs Form: 10U

Subject	Working at Grade	Y11 Unsworth GCSE Target	Effort
English Language	4	6	Good
English Literature	4+	6	Good
Maths	5-	6	Outstanding
Construction	L2M+	L2D	Outstanding
Geography	4+	5	Outstanding
Btec Sport	L2M+	L2D	Outstanding
Science Trilogy	33	77	Below Standard

Percentage Attendance	Total Possible Sessions	Authorised Missed Sessions	Unauthorised Missed Sessions	Late Sessions	MVP	Achievement Points	Behaviour Points
99.7	358	0	1	1	13	91	0

Outstanding

Good

Below Standard

How the new grades compare with old ones

Old grades	New grades
A*	9
A	8
B	7
C	5 Strong Pass 4 Standard Pass
D	3
E	2
F	1
G	
U	U

A 9 can be considered an A**

Progress Update - Example

Reading Age

Assessment	Autumn Term	Spring Term	Summer Term
Chronological Reading Age			
Reading Age			

Pupils will be tested 3 times a year to check their reading age. Their reading age will be stated in years and months (13.5), a proficient reading age to access examination papers is 15. A pupil's reading age should be in line with their chronological (actual) age.

Agenda for the Evening

- Exceptional Unsworth 2028 - Mr Fair
- Assessment and Reporting cycle in Y10 – Mrs Isles
- Support and intervention in Y10 – Ms Pickup
- How parents and carers can support revision - Mr Leyland
- Post-16 education and careers – Ms Isles



Year 10 – Head of Progress

Miss Pickup

Year 10 – Pastoral Leader

Mr Gilchrist



Year 10 Form Mentors

10U – Miss Burns

10N – Miss Lodge

10S – Mr Farrell

10W – Mrs Ross

10O – Dr Hatchel

10R – Miss Fitton

10T – Miss Bresnahan

11H- Miss Clarke



Non-Negotiables

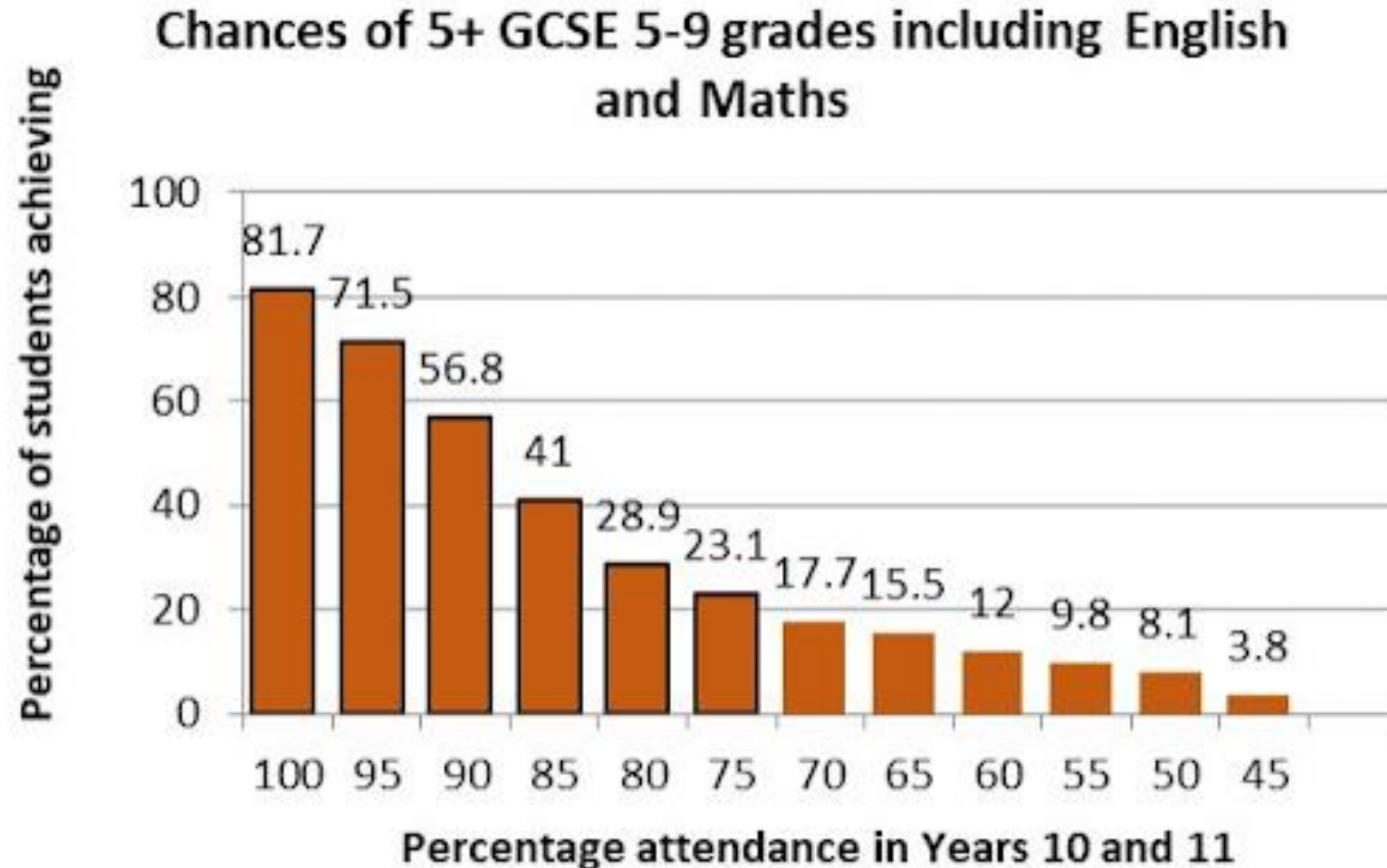
- 96% attendance is our minimum expectation
- Punctuality to school and lessons
- Correct uniform – jewellery & make-up policy
- Equipment, school Bag and iPad
- Excellent attitude to learning

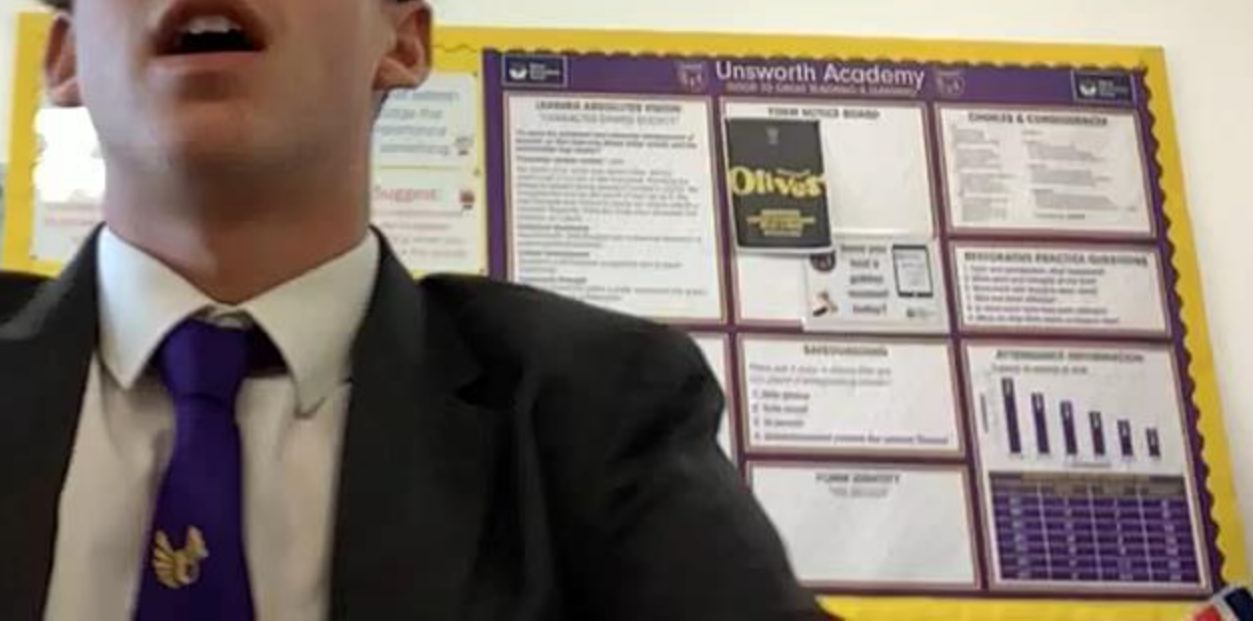
My Role as Head of Progress

- Monitor student progress, attainment and attendance
- Analyse assessment data – identify underperforming students and perform targeted intervention
- Provide holistic support to pupils including interventions; progress meetings and progress reports, subject specific intervention and well-being support.
- Promote careers/post 16 pathways through careers drop down days, workshops and our PD sessions in form time.



Evidence from a Department for Education study shows a strong correlation between school attendance and GCSE success. The chart below illustrates this:





SEND Support

- For pupils with an EHCP, the access arrangements they will have in their GCSEs will be discussed at their annual review meeting.
- Pupils with medical conditions or a diagnosis of any other SEND need may also automatically qualify for support in their exams, again this will be discussed during parents' evenings or meetings with parents.
- Some pupils will be tested at the end of the year based on their data and progress in school and they may then qualify for additional support in their exams. Again, this will be shared with parents if they qualify.
- ***For more information please email information@unsworth.set.org – for the attention of Mrs Atkinson (SENCO)***



Agenda for the Evening

- Exceptional Unsworth 2028 - Mr Fair
- Assessment and Reporting cycle in Y10 – Mrs Isles
- Support and intervention in Y10 – Ms Pickup
- How parents and carers can support revision - Mr Leyland
- Post-16 education and careers – Ms Isles



Making a great start to your GCSE and vocational qualifications

- Well done – overall a good start to GCSE/vocational courses
- There will be no more changes – initial issues have now been ironed out
- Most of the content of your courses is taught in Year 10
- Year 10 is 6 half-terms of teaching (39 weeks of school)
- Year 11 is 3-4 half-terms of teaching with revision and recap at the end – this is also interspersed with 2 sets of mock exams (approx. 32 weeks of school until the first exam)
- You need to be here! Aim for 100% attendance
- For some courses there are exams in Year 10
- For some courses there is ongoing centre assessed work
- There is no time to waste – make the most of **every lesson, every day**
- Every evening, review your classwork and organise your resources and homework
- Have a space to work in – get set up **this year** study timetable, time with **no devices**
- Take part in as many opportunities as possible to enhance your learning and your skills (work experience, clubs, school visits etc.)
- Begin to think about next steps – college applications begin in October 2025



DfE Research Report

Your role is very important!

“School improvement and school effectiveness research consistently shows that parental engagement is one of the key factors in securing higher student achievement. The impact is evident across all social classes and ethnic groups.”

What can you do to support your child in achieving the best possible results?

- Try to provide a space and an environment conducive to revision
- Encourage your child to make a (realistic) timetable of the revision they intend to complete each day and check they have completed it
- Encourage revision with regular breaks (20-50 minutes at a time)
- Keep in regular communication with school (form mentor initially, HOP, pastoral manager, subject teachers)
- Attend parents' evenings so you are aware of how well your child is doing in different subject areas
- Encourage your child to revise for mock exams
- Talk to them about the bigger picture
- Discuss revision strategies with your child



What is effective revision?

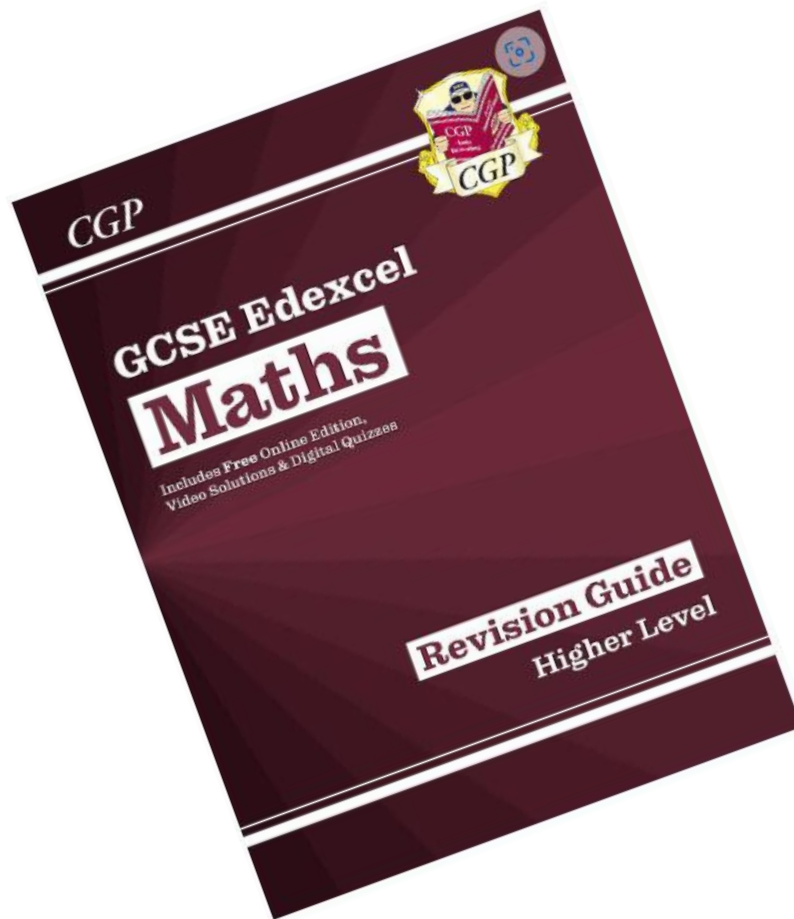
The two most effective study strategies are:

- **Retrieval Practice** – the act of recalling information from memory. This includes self-testing and quizzing.
 - It helps to show what you know and what you don't! If you are aware of the gaps in your knowledge, you can then close them.
 - It can reduce anxiety and boost confidence.
- **Spaced Practice** – this is spacing revision out over time – the opposite to cramming.
 - 5 hours' worth of revision would be better over 5 days than 5 hours in one day.
 1. Start studying early
 2. Spread it out over time
 3. Little and often!
 4. Avoid cramming
 5. Be organised



What might your child's revision look like?

1) Revision guides



Contents	
Section One — Number	
Types of Number and BODMAS.....	2
Multiples, Factors and Prime Factors.....	3
LCM and HCF.....	4
Fractions.....	5
Fractions, Decimals and Percentages.....	7
Fractions and Recurring Decimals.....	8
Rounding Numbers.....	10
Estimating.....	11
Bounds.....	12
Standard Form.....	13
Revision Questions for Section One.....	15
Section Two — Algebra	
Algebra Basics.....	16
Powers and Roots.....	17
Multiplying Out Brackets.....	18
Factoring.....	19
Manipulating Surds.....	20
Solving Equations.....	21
Rearranging Formulae.....	23
Factorising Quadratics.....	25
The Quadratic Formula.....	27
Completing the Square.....	28
Algebraic Fractions.....	30
Sequences.....	31
Inequalities.....	33
Graphical Inequalities.....	35
Iterative Methods.....	36
Simultaneous Equations 1.....	37
Simultaneous Equations 2.....	38
Proof.....	39
Functions.....	41
Revision Questions for Section Two.....	42
Section Three — Graphs	
Straight Lines and Gradients.....	43
$y = mx + c$	44
Drawing Straight-Line Graphs.....	45
Coordinates and Ratio.....	46
Parallel and Perpendicular Lines.....	47
Quadratic Graphs.....	48
Harder Graphs 1.....	49
Harder Graphs 2.....	50
Harder Graphs 3.....	51
Solving Equations Using Graphs.....	52
Graph Transformations.....	53
Real-Life Graphs.....	54
Distance-Time Graphs.....	55
Velocity-Time Graphs.....	56
Gradients of Real-Life Graphs.....	57
Revision Questions for Section Three.....	58
Section Four — Ratio, Proportion and Rates of Change	
Ratio.....	59
Direct and Inverse Proportion.....	61
Percentages.....	64
Compound Growth and Decay.....	67
Unit Conversions.....	68
Speed, Density and Pressure.....	69
Revision Questions for Section Four.....	70
Section Five — Geometry and Measures	
Geometry.....	71
Parallel Lines.....	72
Geometry Problems.....	73
Polygons.....	74
Triangles and Quadrilaterals.....	75
Circle Geometry.....	76
Congruent Shapes.....	78
Similar Shapes.....	79
The Four Transformations.....	80
Area — Triangles and Quadrilaterals.....	82
Area — Circles.....	83
3D Shapes — Surface Area.....	84
3D Shapes — Volume.....	85
More Enlargements and Projections.....	87
Triangle Construction.....	88
Loc and Construction.....	89
Loc and Construction — Worked Examples.....	91
Bearings.....	92
Revision Questions for Section Five.....	93

Throughout this book you'll see grade stamps like these. You can use these to focus your revision on easier or harder work. But remember — to get a top grade you have to know everything, not just the hardest topics.

9 5 7 8

RAG rate topics to prioritise revision

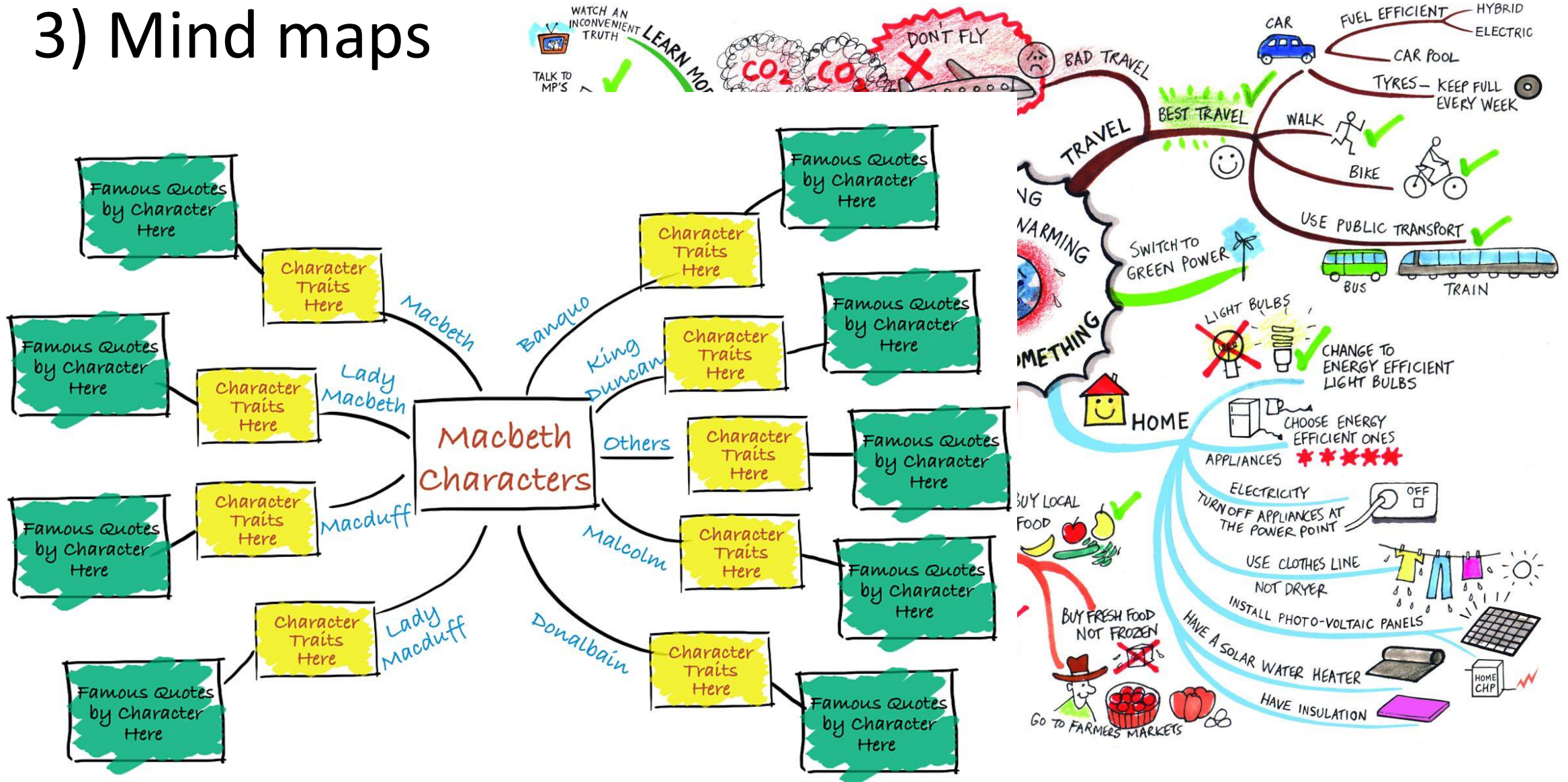
What might your child's revision look like?

2) Cue cards



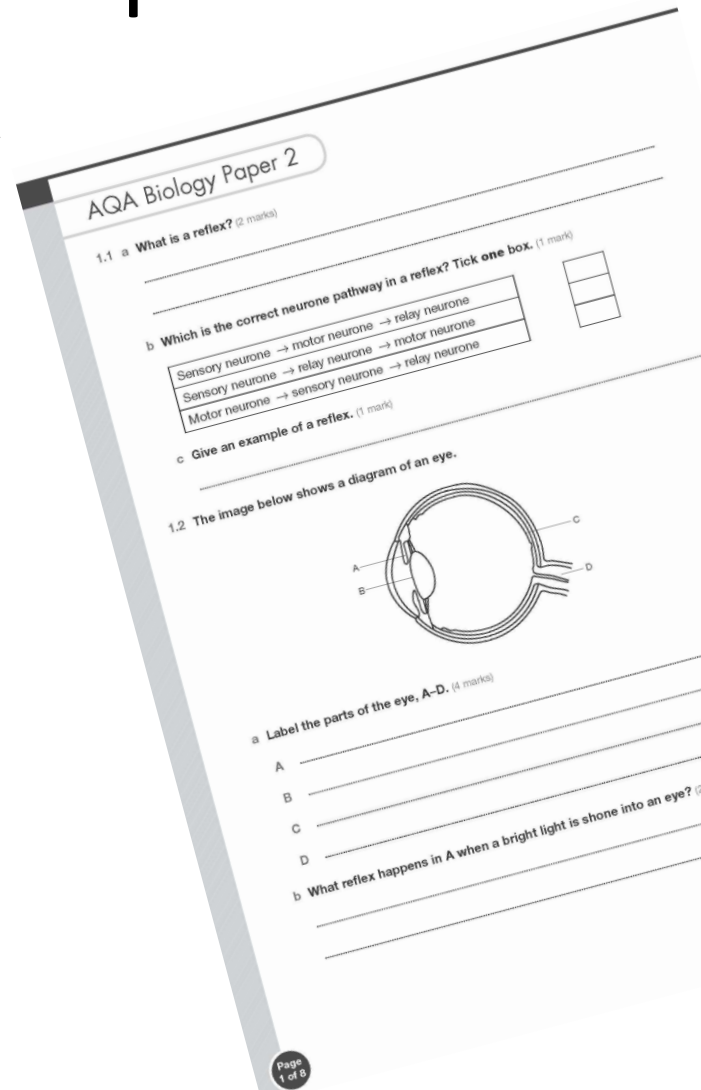
What might your child's revision look like?

3) Mind maps



What might your child's revision look like?

4) Past paper questions and mark schemes



*21

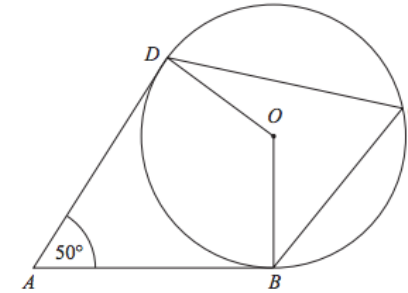


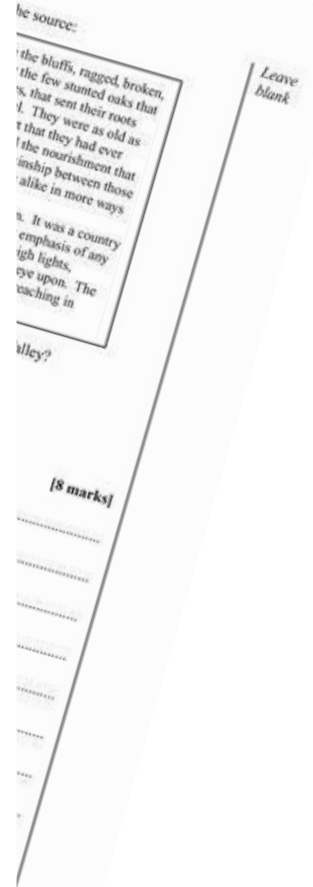
Diagram NOT
accurately drawn

B , C and D are points on the circumference of a circle, centre O .
 AB and AD are tangents to the circle.

Angle $DAB = 50^\circ$

Work out the size of angle BCD .

Give a reason for each stage in your working.



(Total for Question 21 is 4 marks)

What might your child's revision look like?

5) Quick fire questions

Ask a series of 4-5 questions after your child has done a period of revision

What can they remember?

What do they still need to work on?



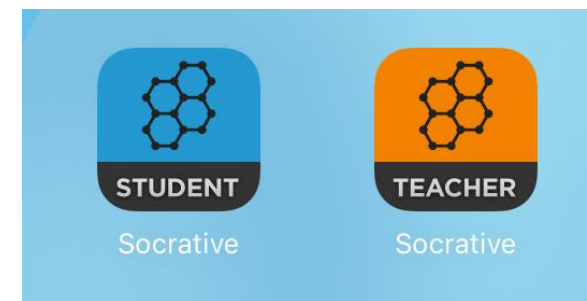
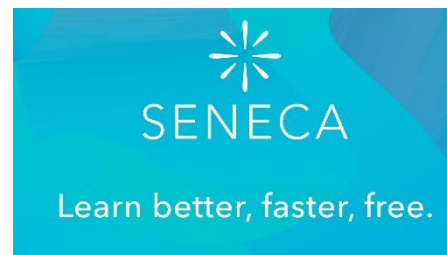
What might your child's revision look like?

6) Active revision techniques such as 'look, say, cover, write, check.'

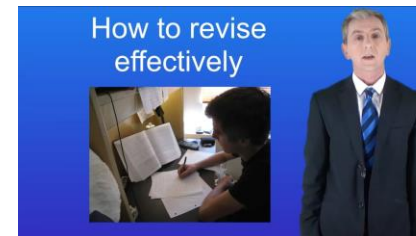
This could be useful if you are trying to remember a particular quote from a text or formula, for example...



iPad learning – enhance T&L



Office 365 Education
Enhancing collaboration and productivity



For example,
Seneca...

09:19 Fri 8 Sep

AA app.senecalearning.com

Back to assignment creation

SENECA

Overview

☆ Exam Prep **New**

Assignments

Ask Amelia

Atomic Structure > Atoms & Elements >
Elements & Compounds
Good morning, Victoria!

1 Atomic Structure

1.1 Atoms & Elements

1.1.1 Elements & Compounds

1.1.2 Chemical Reactions & Equations

1.1.3 Mixtures

1.1.4 Model of the Atom

Start learning

For
example,
Quizlet...

09:47 Fri 8 Sep

AA quizlet.com

'War Photographer' by Carol Ann Duffy

GCSE PHYSICS EQUATIONS Flashcards | Quizlet

Quizlet Home Your library ▾ What's new ✦

Study sets, textbooks, questions

Free trial

Science / Physics

GCSE PHYSICS EQUATIONS

11 studiers today ★ Leave the first rating

In-class activity

Classic Live Checkpoint

Self-study activity

Flashcards Learn Test Match Q-Chat

Get a hint

Weight = mass x gravitational field strength

Agenda for the Evening

- Exceptional Unsworth 2028 - Mr Fair
- Assessment and Reporting cycle in Y10 – Mrs Isles
- Support and intervention in Y10 – Ms Pickup
- How parents and carers can support revision - Mr Leyland
- Post-16 education and careers – Mrs Isles



Unsworth Academy Year 10 Work Experience Programme

27th April to 1st May



The 8 Gatsby Benchmarks

- A Stable Careers programme
- Learning from Labour Market Information
- Addressing the needs of every pupil – A Levels, Vocational, Apprenticeships, etc.
- Linking curriculum to careers
- Encounters with employers and employees
- Experiences of workplaces
- Encounters with further and higher education
- Personal guidance – one to one careers interview.



Why Is Work Experience Important?

- The programme is a fantastic opportunity for your child to gain an introduction into the world of work. It will also allow them to:
 - Develop their employability skills such as communication, teamwork, IT and problem solving. These are just some of the skills that employers look for.
 - Gain confidence in their abilities and start to build their CV.
 - Think more clearly about their future career path.



Self-Placement

- We value parental support in encouraging students to find their own placements. This is good practice for entering the world of work. It is also more likely that a student will find a placement they are interested in, if they find it themselves.
- All placements will be health and safety checked to ensure they are safe, and that the employer holds Employability Liability Insurance. If not, the placement will not be approved.
- If needs be, school has access to a database of employers, licensed by Tailored Education Ltd. If a student has been actively looking and not been able to find a placement, school will support them in trying to do so.



Self-Placing Tips

- Use the internet to find employers in the local area. Email, telephone or visit employers in person to make an enquiry.
- Ask family and friends if they are aware of any companies willing offer a placement.
- Social media – X (formerly Twitter), Facebook, LinkedIn – follow companies on social media to see if they are offering placements.
- Use the employer database.



Once a Placement is Confirmed

- Once a placement has been found, the information **MUST** be input onto an electronic form. (Link/QR code in your information pack)
- When the electronic form has been completed, school will contact the employer to confirm the placement, and a health and safety check will be carried out by Tailored Education Ltd.
- Should the health and safety checks come back unsatisfactory, a new placement will need to be found.
- During the placement, staff at school will make contact with the employer to make sure everything is going well.
- An evaluation will be completed by each employer and returned to school.



What Next?

- A letter giving all information will be handed out this evening. On the letter there is a link to the electronic form. This letter will also be emailed to students at their school email address.
- The deadline for confirming placements is **Friday 28th November**
- Should you have any questions, please email them to careers@unsworth.set.org or see Mrs Isles



Electronic Form

All placement details MUST be entered into this link below in the parent letter/by accessing using the QR code or link below:

<https://forms.office.com/e/XDZcA7tFqp>



College Open Events Calendar 2025/26





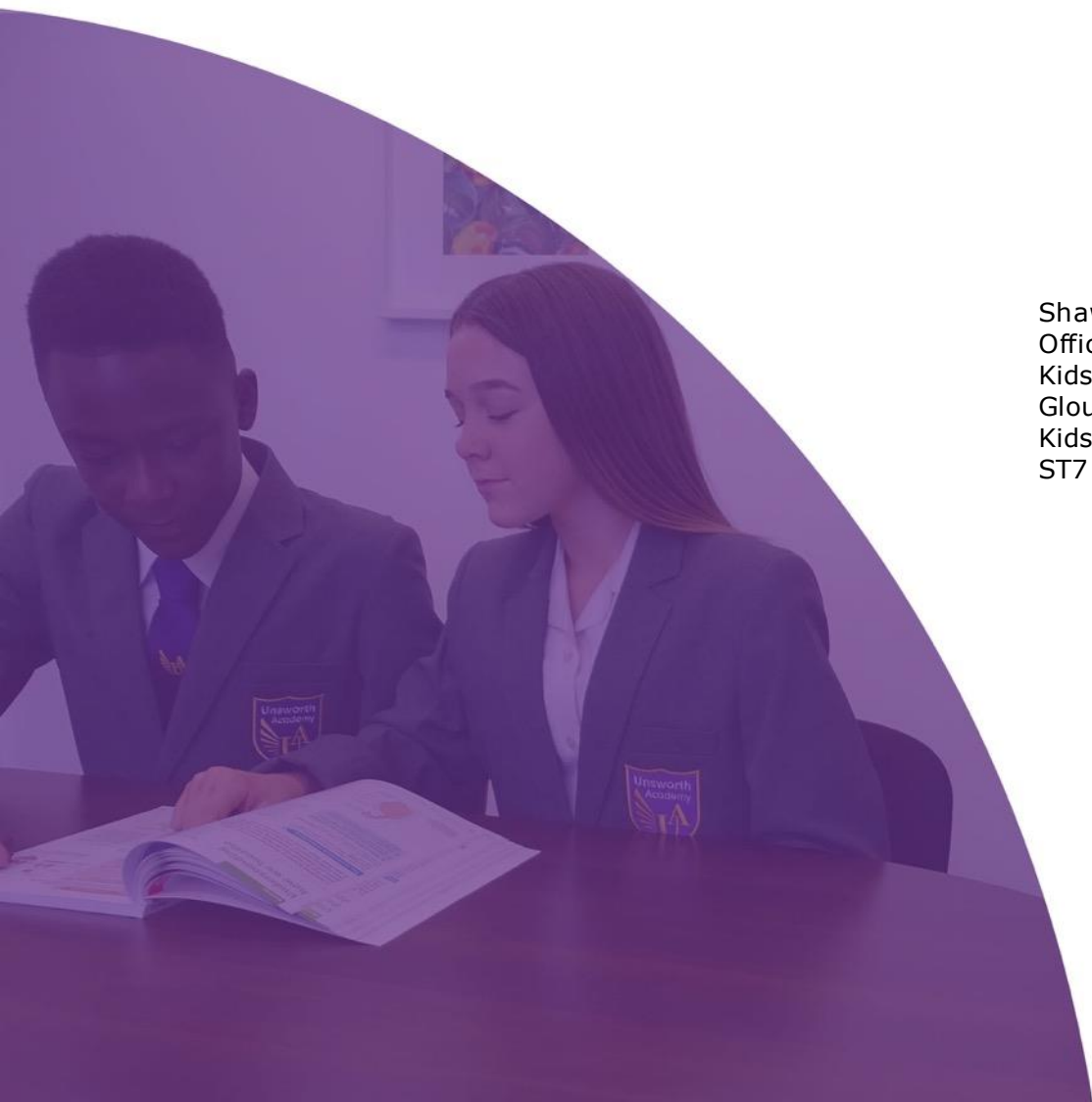
College Open Days

COLLEGE OPEN EVENTS AND DEADLINES	OPEN DATES	APPLICATIONS OPEN	APPLICATIONS CLOSE
Holy Cross College	Saturday 4th October (10am-1pm), Monday 13th October (5pm - 8pm)	Wednesday 1st October 2025	Monday 1st December 2025
Bury College	Tuesday 7th October 2025 (5 - 7.15pm), Thursday 16th October 2025 (5 - 7.15pm), Saturday 8th November 2025 (10.30am - 1pm)	Wednesday 1st October 2025	Monday 24th November 2025
Bolton College			
Rochdale Sixth Form	Saturday 18th October 2025, Thursday 20th November 2025		
Hopwood Hall College	Saturday 4th October (10.30am - 1.30pm), Wednesday 22nd October (4.30pm - 6.30pm)		
The Manchester College	Tuesday 7th October 2025 (5pm - 7pm), Saturday 15th November 2025 (10am - 1pm), Thursday 5th March 26 (5pm - 7pm)		
Bolton Sixth Form	Wednesday 8th October 2025 (5pm - 8pm), Saturday 22nd November 2025 (10am - 1.30pm)		
Oldham College	Wednesday 8th October (4.30pm - 6.30pm), Saturday 15th Nov 25, Saturday 14th March 26 (10.30am - 1pm)		
Salford City Colleges: Worsley College	Tuesday 14th October 2025, Tuesday 2nd Decmeber 2025, Tuesday 3rd March 2026 (5pm - 7pm)		
Salford City Colleges: Pendleton Sixth Form College	Saturday 20th September 2025 (10am - 12pm), Tuesday 21st October 2025, Thursday 27th November 2025 (5pm - 7pm)		
Salford City Colleges: Future Skills Media City Uk	Wednesday 8th October 2025 (5pm - 7pm), Saturday 29th November 2025 (10am - 12pm)		
Salford City Colleges: Eccles Sixth Form College	Thursday 9th October 2025, Saturday 6th December 2025 (5pm - 7pm)		

Bury Careers Event

Wednesday 24th September 2025

3:30pm – 7.00pm Castle Leisure Centre



Shaw Education Trust Head
Office
Kidsgrove Secondary School
Gloucester Road
Kidsgrove
ST7 4DL

Twitter: @shawedutrust
Tel: 01782 742910
Email: info@shaw-education.org.uk
Online: www.shaw-education.org.uk



Parr Lane
Bury
BL9 8LP

Twitter: @UnsworthAcademy
Tel: 0161 796 9820
Email: information@unsworth.set.org
Online: www.unsworthacademy.org.uk