

Exceptional Unsworth Y11 Parents' Information Evening

Tuesday 9th September 2025

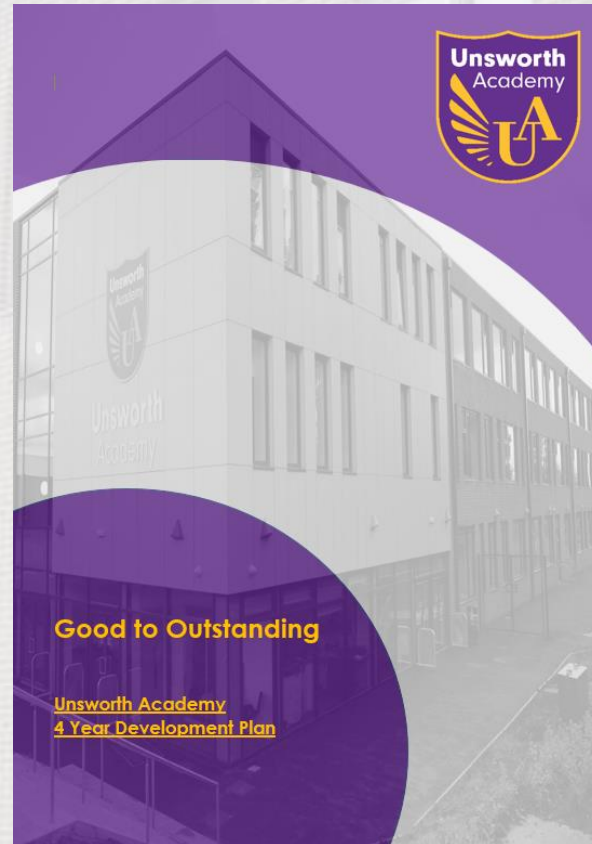


Agenda for the Evening

- Exceptional Unsworth 2028 - Mr Fair
- Assessment and Reporting cycle in Y11 – Mrs Isles
- Support and intervention in Y11 – Miss Taylor
- How parents and carers can support revision - Ms Upton
- The transition from Y11 to post-16 education and training – Ms Isles



Year 1 – 21 22
Year 2 – 22 23
Year 3 – 23 24
Year 4 – 24 25





Superb GCSE Results in the summer!

Science Trilogy	42%	Grades 55 to 99
Geography	23%	Grade 7 to 9
Spanish	62%	Grade 5 to 9
Art	89%	Grade 4 to 9
Sport	91%	L2P to L2D*
Construction	89%	L2P to L2D*
H&C	64%	L2M to L2D*



Top Performers (based on average grade)

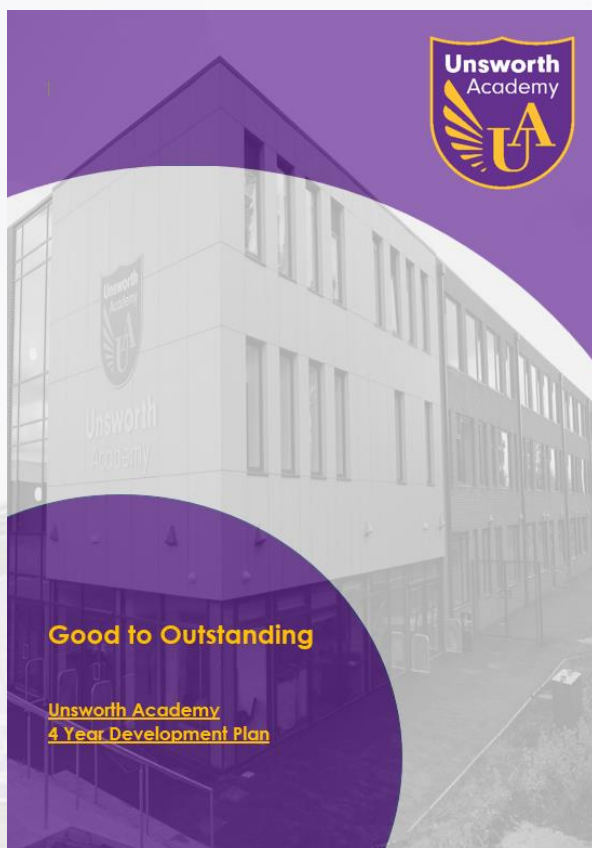
Name	9	8	7	6/5	L2D*	L2D/L2M	Avg Grade
Student A	7	1			1		8.83
Student B	4	4					8.50
Student C	3	3	2				8.13
Student D	3	3	2			1	7.83
Student E	1	3	2		1	1	7.81
Student F	2	2	3	1	1		7.72
Student G	2	3	2	1			7.63
Student H	4	1	1	3			7.56
Student I		5	2	1			7.50
Student J		5	2	1		1	7.44

Special Success Stories

Student K – 4, 4, 5, 5, 55, L2M, L2M

Student L – 5, 5, 5, 65, 6, 6, L2M





Exceptional Unsworth 2028



Unsworth Academy 3 Year Development Plan



Page | 1

Year 1 – 25 26
Year 2 – 26 27
Year 3 – 27 28



KEEP

- Vision, values, culture.
- T&L foci.
- Agility in planning.
- Commitment to “being nice.”
- Clear systems.
- How we train the staff team.

CHANGE

- Curriculum design.
- Use of technology.
- Leadership development.
- Student Leadership development.
- Careers education.
- School site.





Agenda for the Evening

- Exceptional Unsworth 2028 - Mr Fair
- Assessment and Reporting cycle in Y11 – Mrs Isles
- Support and intervention in Y11 – Ms Taylor
- How parents and carers can support revision - Ms Upton
- The transition from Y11 to post-16 education and training – Ms Isles



Year 11 Assessment and Reporting Cycle 2025/26

Event/Exams/Reports/Parent's Evenings	Date
College Presentations	Week Commencing Monday 15th September
Bury Careers Event – Castle Leisure Centre	Wednesday 24th September (3.30pm-7pm)
Year 11 Mock Interview Day	Friday 24th October
Mock Exams 1	Monday 10th November – Wednesday 19th November
Autumn Progress Report	Week commencing Monday 8th December
Year 11 Parents' Evening	Thursday 11th December (4pm-7pm)
Christmas Holidays – ALL COLLEGE APPLICATIONS SUBMITTED	
Mock Exams 2	Monday 9th February – Thursday 26th February
Spring Progress Report	Week commencing Monday 17th March
Year 11 Parents' Evening	Thursday 26th March (4pm-7pm)
Easter Holidays – REVISION, REVISION, REVISION	
GCSE Exams begin	Monday 11th May
GCSE Exams end	Wednesday 17th June
School Prom	Thursday 25th June
GCSE Results	Thursday 20th August

Progress Update - Example

Name: Joe Bloggs Form: 11U

Subject	Working at Grade	Y11 Unsworth GCSE Target	Effort
English Language	4	6	Good
English Literature	4+	6	Good
Maths	5-	6	Outstanding
Construction	L2M+	L2D	Outstanding
Geography	4+	5	Outstanding
Btec Sport	L2M+	L2D	Outstanding
Science Trilogy	33	77	Below Standard

Percentage Attendance	Total Possible Sessions	Authorised Missed Sessions	Unauthorised Missed Sessions	Late Sessions	MVP	Achievement Points	Behaviour Points
99.7	358	0	1	1	13	91	0

Outstanding

Good

Below Standard

GCSE Exams 2026

- 2026 GCSE examinations dates have been confirmed. (You have a copy of the timetable in your handouts tonight)
- During GCSEs Normal lessons continue – NO STUDY LEAVE
- Bespoke timetable constructed for the final exam preparations.
- **Period 6 – attendance expected on Tuesday, Wednesday and Thursday after school (finish at 4pm) different format to lessons (masterclasses, lectures etc)**
- **Period 6 begins on Monday 22nd September for 6 weeks (ahead of first set of mock examinations)**



Period 6 Overview

Week	Dates (2024)	P6/Exams
4	22 Sept – 26 Sept	Period 6 - Wk 1
5	29 Sept – 3 Oct	Period 6 - Wk 2
6	6 Oct – 10 Oct	Period 6 - Wk 3
7	13 Oct - 17 Oct	Period 6 - Wk 4
8	20 Oct - 24 Oct	Period 6 - Wk 5
OCTOBER HALF TERM		
9	3 Nov – 7 Nov	Period 6 - Wk 6
10	10 Nov - 14 Nov	Y11 Mocks 1 Wk 1
11	17 Nov -19 Nov	Y11 Mocks 1 Wk 2
12	24 Nov - 28 Nov	
13	1 Dec – 5 Dec	
14	2 Dec - 6 Dec	
15	8 Dec - 12 Dec	Progress report/Parents Evening
16	15 Dec - 19 Dec	

Week	Dates (2025)	P6/Exams
17	5 Jan - 9 Jan	Period 6 - Wk 1
18	12 Jan - 16 Jan	Period 6 - Wk 2
19	19 Jan - 23 Jan	Period 6 - Wk 3
20	26 Jan – 30 Jan	Period 6 - Wk 4
21	2 Feb - 6 Feb	Period 6 - Wk 5
22	9 Feb - 13 Feb	Y11 Mocks 2 Wk 1
FEBRUARY HALF TERM		
23	23 Feb – 26 Feb	Y11 Mocks 2 Wk 2
24	2 Mar - 6 Mar	
25	9 Mar - 13 Mar	
26	16 Mar - 20 Mar	
27	23 Mar - 27 Mar	Progress report/Parents Evening
28	30 Mar – 2 April	
EASTER HOLIDAYS		

GCSE Exam Timetable (first 3 weeks)

Summer 2026 GCSE Timetable							
	<u>Date</u>	<u>Start</u>	<u>Length</u>	<u>Board</u>	<u>Component Code</u>	<u>Component Title</u>	<u>Level</u>
Wk 1	Friday 8 May	9:00	1:15	OCR	R184	Contemporary Issues in Sport	CNAT/1&2
Wk 2	Monday 11 May	9:00	1:45	AQA	8702/1	English Literature Paper 1	GCSE/9FC
	Tuesday 12 May	9:00	1:45	EDEXL/GCSE	1RB0 1B	Religious Studies B Paper 1	GCSE/9FC
	Tuesday 12 May	13:00	1:45	AQA	8461/2H	Biology Paper 2 Tier H	GCSE/9FC
	Tuesday 12 May	13:00	1:15	AQA	8464/B/2H	Combined Sci Trilogy Biology Paper 2H	GCSE/9DA
	Tuesday 12 May	13:00	1:15	AQA	8464/B/2F	Combined Sci Trilogy Biology Paper 2F	GCSE/9DA
	Wednesday 13 May	9:00	1:00	OCR	J383/01	Geography A- Living in the UK today	GCSE/9FC
	Wednesday 13 May	13:00	1:30	OCR	J277/01	Computer Science: Computer Systems	GCSE/9FC
	Thursday 14 May	9:00	1:30	EDEXL/GCSE	1MA1 1H	Mathematics: Paper 1 Higher (Non-Calculator)	GCSE/9FC
	Thursday 14 May	9:00	1:30	OCR	J560/01	Mathematics: Paper 1 Foundation (Calculator)	GCSE/9FC
	Friday 15 May	9:00	2:00	AQA	8145/1A/D-1B/B	History Paper 1	GCSE/9FC
Wk 3	Monday 18 May	9:00	1:45	AQA	8462/1H	Chemistry Paper 1 Tier H	GCSE/9FC
	Monday 18 May	9:00	1:15	AQA	8464/C/1H	Combined Sci Trilogy Chemistry Paper 1H	GCSE/9DA
	Monday 18 May	9:00	1:15	AQA	8464/C/1F	Combined Sci Trilogy Chemistry Paper 1F	GCSE/9DA
	Tuesday 19 May	9:00	2:15	AQA	8702/2	English Literature Paper 2	GCSE/9FC
	Tuesday 19 May	13:00	1:30	OCR	J277/02	Computer Science: Computational thinking, algorithms and programming	GCSE/9FC
	Thursday 21 May	9:00	1:45	AQA	8700/1	English Language Paper 1	GCSE/9FC
HALF TERM							

Agenda for the Evening

- Exceptional Unsworth 2028 - Mr Fair
- Assessment and Reporting cycle in Y11 – Mrs Isles
- Support and intervention in Y11 – Miss Taylor
- How parents and carers can support revision - Ms Upton
- The transition from Y11 to post-16 education and training – Ms Isles





Year 11 – Head of Progress

Miss Taylor

Year 11 – Pastoral Leader

Miss Mortenson

Year 11 Form Mentors

11U – Mr Swan

11N – Mr Zubair

11S – Mr French

11W – Miss Hargreaves

11O – Miss Jackson

11R – Miss Wilson

11T – Mr Wright

11H- Miss White



Form Time Routines

Monday	Tuesday	Wednesday	Thursday	Friday
Assembly	English quotes discussion and intervention	Personal Development	Personal Development	Maths discussion and intervention

Pastoral and progress support from school

- Head of progress – analyse assessment data to identify students who need support / intervention to boost progress.
- Year 11 mentoring programme – 1:1 support from a designated mentor
- Intervention - subject specific, 1:1 support with pastoral manager of HOP, year 11 mentoring, well-being support.
- Parental contact – phone calls, updates and meetings



Additional Support

- Careers Adviser - Mr Welch
- College applications – PD time, form mentors and year team
- Maths / English intervention – form time Tuesday and Friday plus breakout groups throughout the week
- Pastoral support – Miss Taylor, Miss Mortenson
- Easter/May half term revision sessions and period 6
- Rev up sessions – bespoke exam timetable for year 11



Non-Negotiables

- 96% Attendance is our minimum
- Outstanding punctuality to school and lessons
- Professional / correct uniform – get the basics right.
- Be prepared - equipment including charged iPad and school bag
- Excellent attitude to learning in all lessons



Let's hear from
Aemen...a
previous student
at Unsworth
Academy



Agenda for the Evening

- Exemplary Unsworth 2028 - Mr Fair
- Assessment and Reporting cycle in Y11 – Mrs Isles
- Support and intervention in Y11 – Ms Taylor
- How parents and carers can support revision - Ms Upton
- The transition from Y11 to post-16 education and training – Ms Isles



DfE Research Report

Your role is very important!

“School improvement and school effectiveness research consistently shows that parental engagement is one of the key factors in securing higher student achievement. The impact is evident across all social classes and ethnic groups.”

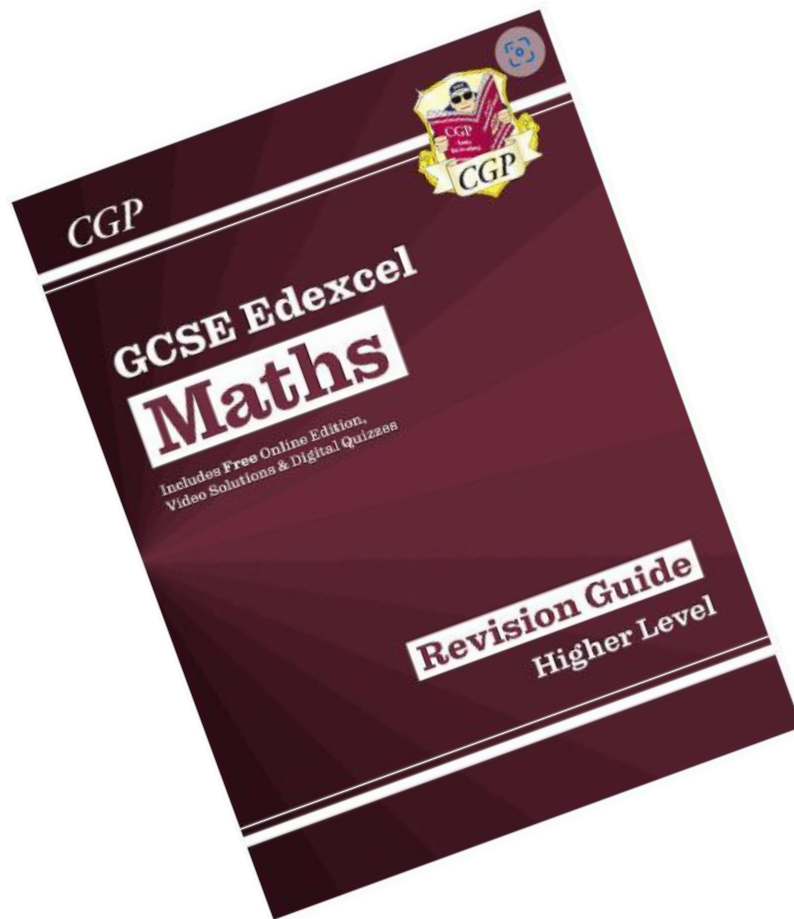
What can you do to support your child in achieving the best possible results?

- Encourage your child to attend period 6 revision lessons
- Try to provide a space and an environment conducive to revision
- Encourage your child to make a (realistic) timetable of the revision they intend to complete each day and check they have completed it
- Encourage revision with regular breaks
- Keep in regular communication with school (form mentor initially, HOP, pastoral manager, subject teachers)
- Two Parents' Evenings
- Encourage your child to treat mock exams like they are the actual exams
- Talk to them about the bigger picture and how every step counts
- Discuss revision strategies with your child



What might your child's revision look like?

1) Revision guides



Contents	
Section One — Number	
Types of Number and BODMAS.....	2
Multiples, Factors and Prime Factors.....	3
LCM and HCF.....	4
Fractions.....	5
Fractions, Decimals and Percentages.....	7
Fractions and Recurring Decimals.....	8
Rounding Numbers.....	10
Estimating.....	11
Bounds.....	12
Standard Form.....	13
Revision Questions for Section One.....	15
Section Two — Algebra	
Algebra Basics.....	16
Powers and Roots.....	17
Multiplying Out Brackets.....	18
Factorising.....	19
Manipulating Surds.....	20
Solving Equations.....	21
Rearranging Formulae.....	23
Factorising Quadratics.....	25
The Quadratic Formula.....	27
Completing the Square.....	28
Algebraic Fractions.....	30
Sequences.....	31
Inequalities.....	33
Graphical Inequalities.....	35
Iterative Methods.....	36
Simultaneous Equations 1.....	37
Simultaneous Equations 2.....	38
Proof.....	39
Functions.....	41
Revision Questions for Section Two.....	42
Section Three — Graphs	
Straight Lines and Gradients.....	43
$y = mx + c$	44
Drawing Straight-Line Graphs.....	45
Coordinates and Ratio.....	46
Parallel and Perpendicular Lines.....	47
Quadratic Graphs.....	48
Harder Graphs 1.....	49
Harder Graphs 2.....	50
Harder Graphs 3.....	51
Solving Equations Using Graphs.....	52
Graph Transformations.....	53
Real-Life Graphs.....	54
Distance-Time Graphs.....	55
Velocity-Time Graphs.....	56
Gradients of Real-Life Graphs.....	57
Revision Questions for Section Three.....	58
Section Four — Ratio, Proportion and Rates of Change	
Ratio.....	59
Direct and Inverse Proportion.....	61
Percentages.....	64
Compound Growth and Decay.....	67
Unit Conversions.....	68
Speed, Density and Pressure.....	69
Revision Questions for Section Four.....	70
Section Five — Geometry and Measures	
Geometry.....	71
Parallel Lines.....	72
Geometry Problems.....	73
Polygons.....	74
Triangles and Quadrilaterals.....	75
Circle Geometry.....	76
Congruent Shapes.....	78
Similar Shapes.....	79
The Four Transformations.....	80
Area — Triangles and Quadrilaterals.....	82
Area — Circles.....	83
3D Shapes — Surface Area.....	84
3D Shapes — Volume.....	85
More Enlargements and Projections.....	87
Triangle Construction.....	88
Loc and Construction.....	89
Loc and Construction — Worked Examples.....	91
Bearings.....	92
Revision Questions for Section Five.....	93

Throughout this book you'll see grade stamps like these. You can use these to focus your revision on easier or harder work. But remember — to get a top grade you have to know **everything**, not just the hardest topics.

9 5 7 8

RAG rate
topics to
prioritise
revision

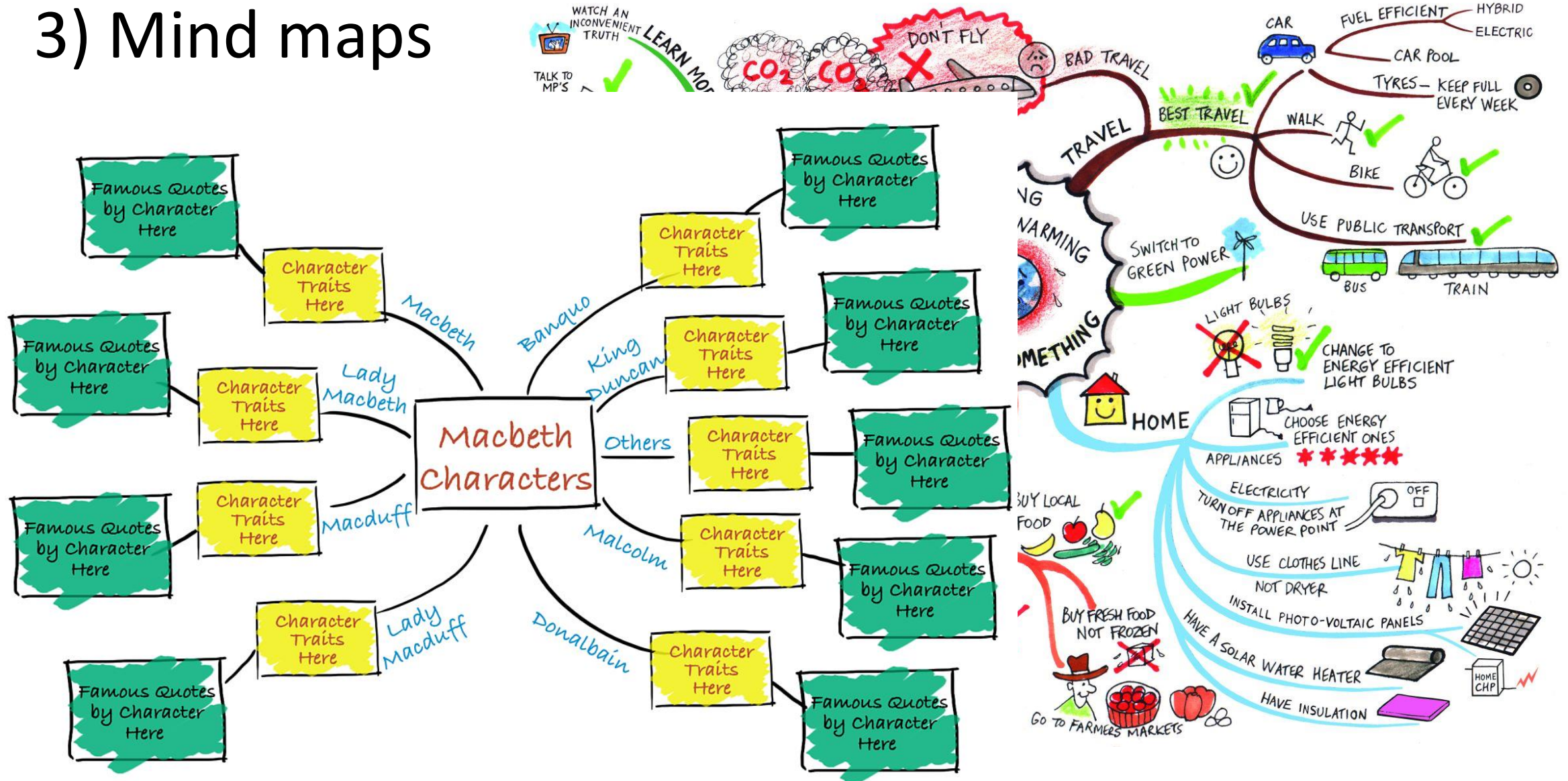
What might your child's revision look like?

2) Cue cards



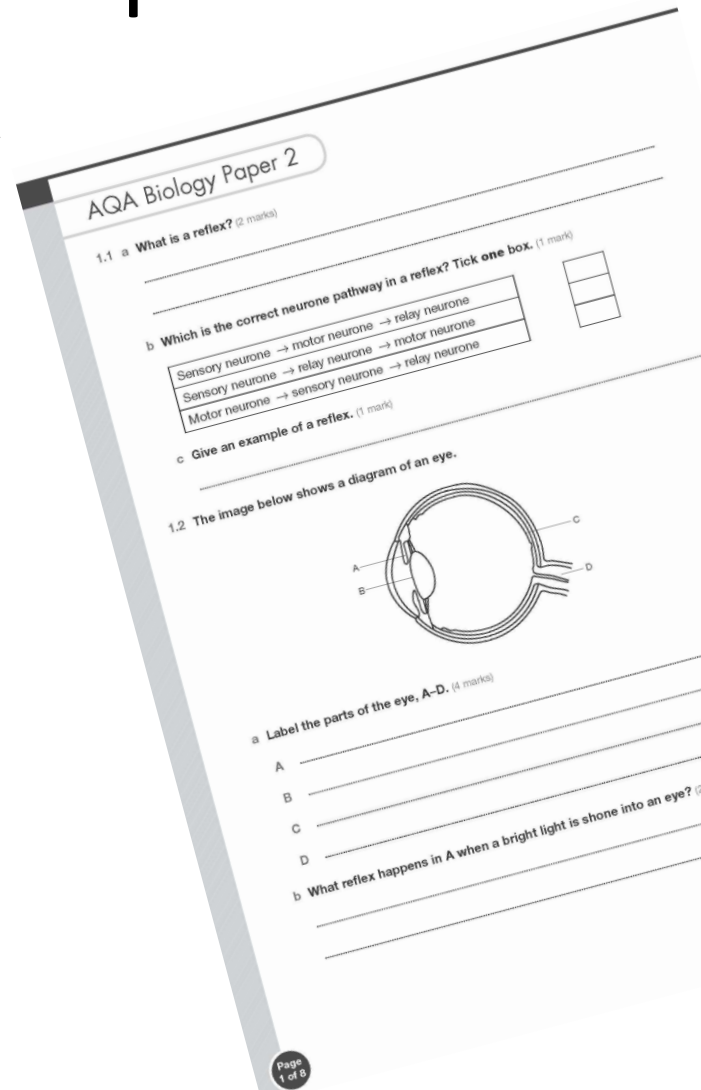
What might your child's revision look like?

3) Mind maps



What might your child's revision look like?

4) Past paper questions and mark schemes



*21

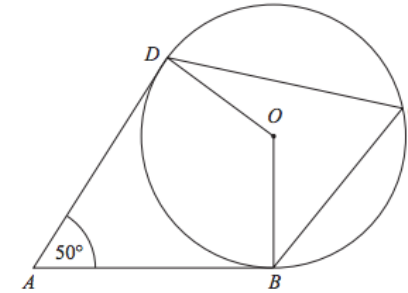


Diagram NOT
accurately drawn

B , C and D are points on the circumference of a circle, centre O .
 AB and AD are tangents to the circle.

Angle $DAB = 50^\circ$

Work out the size of angle BCD .

Give a reason for each stage in your working.



(Total for Question 21 is 4 marks)

What might your child's revision look like?

5) Quick fire questions

Ask a series of 4-5 questions after your child has done a period of revision

What can they remember?

What do they still need to work on?



What might your child's revision look like?

6) Active revision techniques such as 'look, say, cover, write, check.'

This could be useful if you are trying to remember a particular quote from a text or formula, for example...



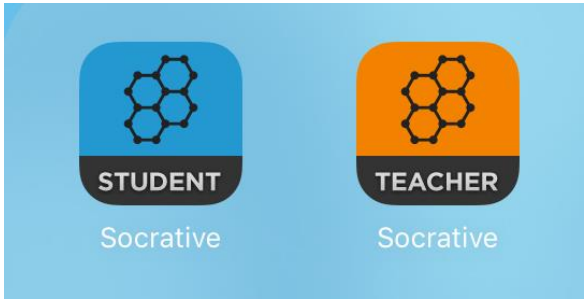
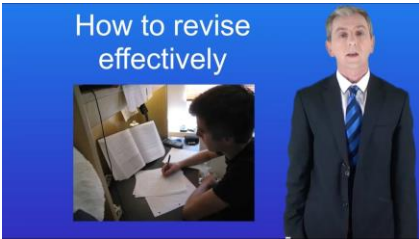
iPad GCSE Revision Strategies

One of the most effective ways of revising is being tested on knowledge and then re-covering knowledge that cannot be recalled.

The benefits of iPad revision is that digital systems can adapt to a child's individual strengths and areas for development.



iPad learning – enhance T&L



Office 365 Education
Enhancing collaboration and productivity



For
example,
GCSEPOD

08:06 Tue 9 Sep

members.gcsepod.com

What would you like to teach today?

Something missing? Download content list All Content

Home Teach Assess Monitor Collections Reports Resources

English Literature

Exam Board

AQA

Topic

Poetry: Power & Conflict

Ozymandias by Percy Bysshe Shelley (AQA)

William Godwin

Last visited: 4 months ago

Songs of Innocence Songs of Experience

17:39 6 pods 0 watched

London by William Blake (AQA)

My Last Duchess by Robert Browning (AQA)

Dramatic monologue

Extract from The Prelude by William...

Last visited: 5 months ago

Face up to actions Haunts him

The Charge of the Light Brigade by...

Alfred Lord Tennyson

Battle of Balaclava

Crimean War 25th October 1854

Exposure by Wilfred Owen (AQA)

Last visited: 5 months ago

WWI

For example,
Seneca...

09:19 Fri 8 Sep

AA app.senecalearning.com

Back to assignment creation

SENECA

Overview

☆ Exam Prep **New**

Assignments

Ask Amelia

Atomic Structure > Atoms & Elements >
Elements & Compounds
Good morning, Victoria!

1 Atomic Structure

1.1 Atoms & Elements

1.1.1 Elements & Compounds

1.1.2 Chemical Reactions & Equations

1.1.3 Mixtures

1.1.4 Model of the Atom

Start learning

For
example,
Quizlet...

09:47 Fri 8 Sep

AA quizlet.com

'War Photographer' by Carol Ann Duffy

GCSE PHYSICS EQUATIONS Flashcards | Quizlet

Quizlet Home Your library ▾ What's new ✦

Study sets, textbooks, questions

+

Free trial

Science / Physics

GCSE PHYSICS EQUATIONS

11 studiers today ★ Leave the first rating


In-class activity

Classic Live Checkpoint

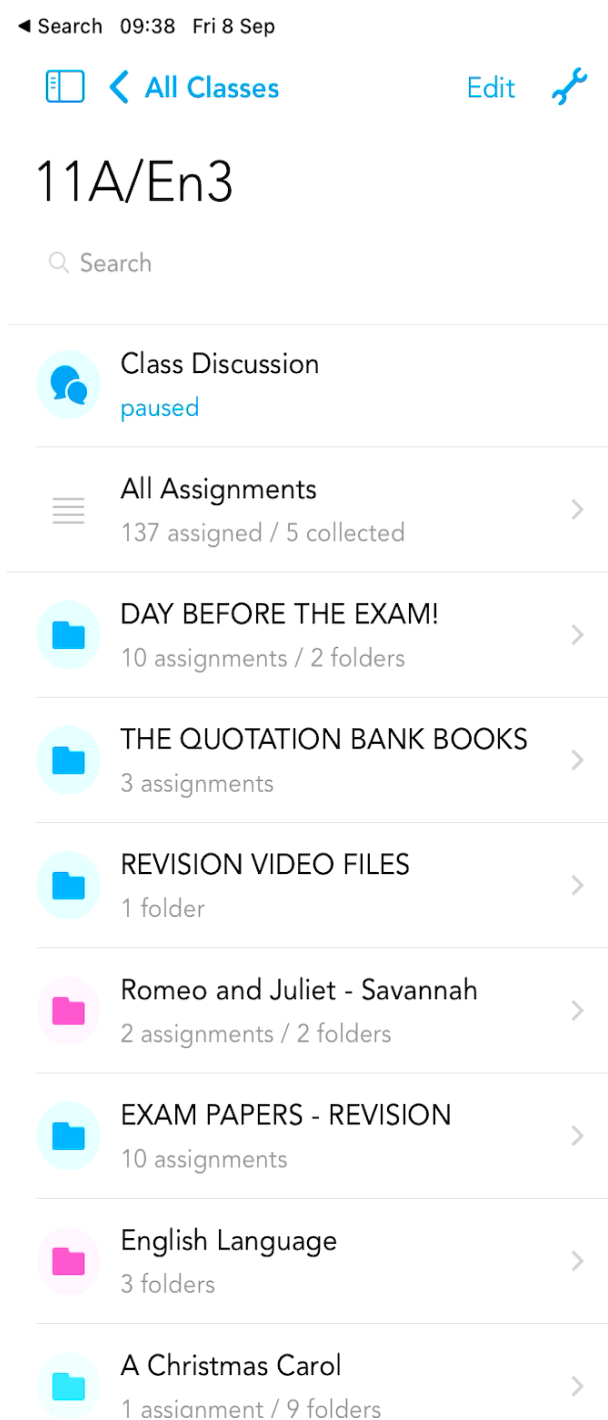
Self-study activity

Flashcards Learn Test Match Q-Chat

💡 Get a hint 🔊 ★

 Weight = mass x gravitational field strength

For example, Showbie



Here is another reflection from Dom, another student previously at Unsworth Academy...



Agenda for the Evening

- Exemplary Unsworth 2028 - Mr Fair
- Assessment and Reporting cycle in Y11 – Ms Isles
- Support and intervention in Y11 – Ms Taylor
- How parents and carers can support revision - Ms Upton
- iPad GCSE Revision Strategies - Ms Koval
- The transition from Y11 to post-16 education and training – Mrs Isles



Preparing for Post-16 Pathways

- Next week (w/c 15th September) - College assemblies during form time
- Holy Cross, Bury College, Salford Colleges, Hopwood Hall & Bolton College
- Discussions regarding post-16 pathways
- Applications to at least **TWO** post-16 providers
- Mock Interview day Friday 24th October – a CV will be required (form time)
- College application deadlines in your information pack.





College Open Days

COLLEGE OPEN EVENTS AND DEADLINES	OPEN DATES	APPLICATIONS OPEN	APPLICATIONS CLOSE
Holy Cross College	Saturday 4th October (10am-1pm), Monday 13th October (5pm - 8pm)	Wednesday 1st October 2025	Monday 1st December 2025
Bury College	Tuesday 7th October 2025 (5 - 7.15pm), Thursday 16th October 2025 (5 - 7.15pm), Saturday 8th November 2025 (10.30am - 1pm)	Wednesday 1st October 2025	Monday 24th November 2025
Bolton College			
Rochdale Sixth Form	Saturday 18th October 2025, Thursday 20th November 2025		
Hopwood Hall College	Saturday 4th October (10.30am - 1.30pm), Wednesday 22nd October (4.30pm - 6.30pm)		
The Manchester College	Tuesday 7th October 2025 (5pm - 7pm), Saturday 15th November 2025 (10am - 1pm), Thursday 5th March 26 (5pm - 7pm)		
Bolton Sixth Form	Wednesday 8th October 2025 (5pm - 8pm), Saturday 22nd November 2025 (10am - 1.30pm)		
Oldham College	Wednesday 8th October (4.30pm - 6.30pm), Saturday 15th Nov 25, Saturday 14th March 26 (10.30am - 1pm)		
Salford City Colleges: Worsley College	Tuesday 14th October 2025, Tuesday 2nd Decmeber 2025, Tuesday 3rd March 2026 (5pm - 7pm)		
Salford City Colleges: Pendleton Sixth Form College	Saturday 20th September 2025 (10am - 12pm), Tuesday 21st October 2025, Thursday 27th November 2025 (5pm - 7pm)		
Salford City Colleges: Future Skills Media City Uk	Wednesday 8th October 2025 (5pm - 7pm), Saturday 29th November 2025 (10am - 12pm)		
Salford City Colleges: Eccles Sixth Form College	Thursday 9th October 2025, Saturday 6th December 2025 (5pm - 7pm)		

Bury Careers Event

Wednesday 24th September 2025

3:30pm – 7.00pm Castle Leisure Centre

Apprenticeships

If any students are hoping to follow the apprenticeship route, it is important to be aware that if you apply to college to do an apprenticeship, it is up to you, the applicant to find an employer who is willing to offer you a job.

Colleges may have a bank of employers that they have worked with in the past, so make sure you ask them. You can use social media (Facebook/LinkedIn) to look for local vacancies or if you have an account, post on there that you are looking for an employer.



SEND Support

- Access Arrangements for Year 11 Exams are already in place. This includes extra time, reader pens, prompter and laptop use.
- Learners will be using these throughout the year during internal exams to ensure they are familiar with them.
- Any SEN concerns then please contact Mrs Atkinson – SENCO



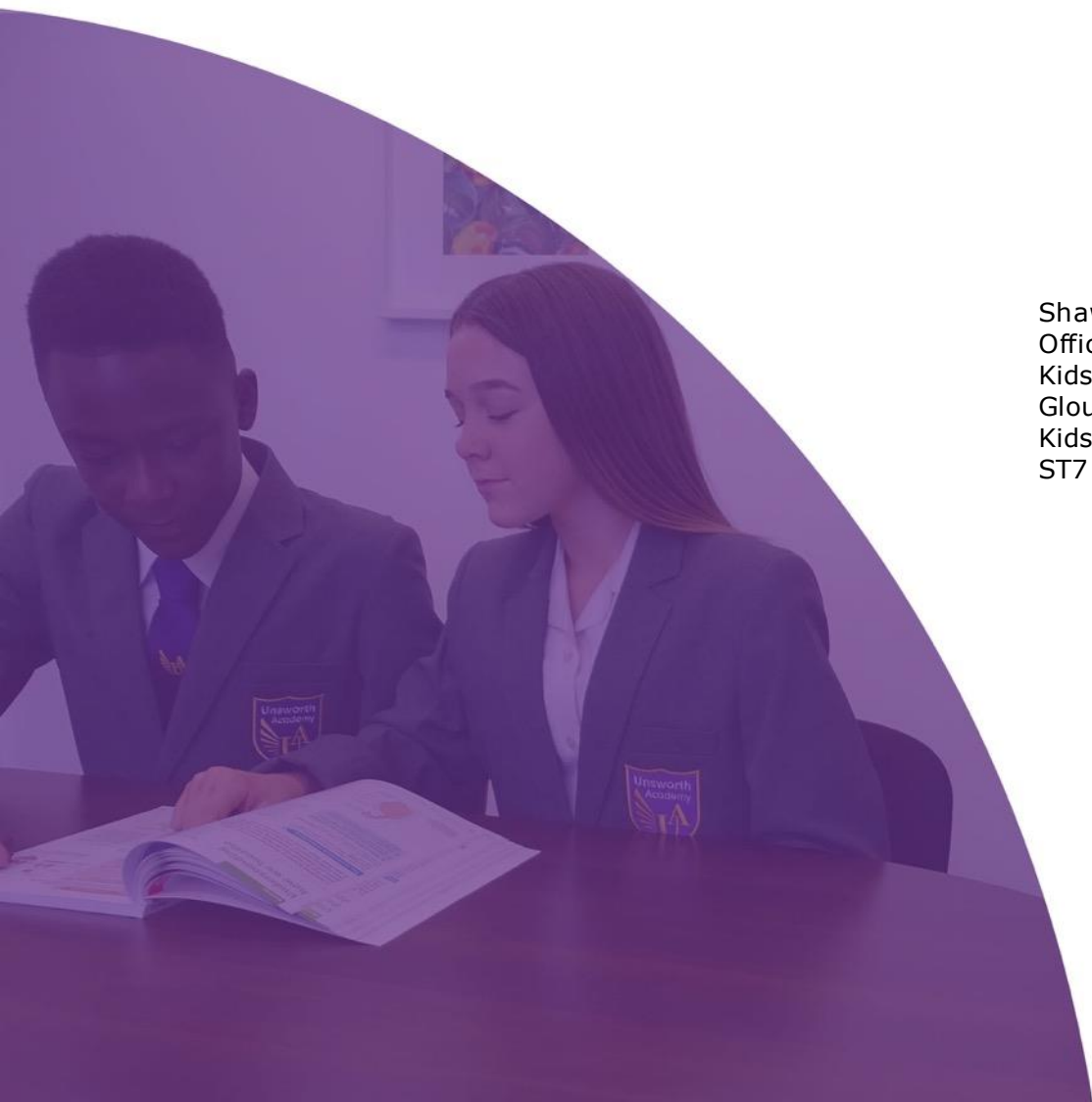
28 School Weeks and 3 days left

to the start of the GCSE Exams

EVERY second in **EVERY** lesson counts.

The countdown has begun.





Shaw Education Trust Head
Office
Kidsgrove Secondary School
Gloucester Road
Kidsgrove
ST7 4DL

Twitter: @shawedutrust
Tel: 01782 742910
Email: info@shaw-education.org.uk
Online: www.shaw-education.org.uk



Parr Lane
Bury
BL9 8LP

Twitter: @UnsworthAcademy
Tel: 0161 796 9820
Email: information@unsworth.set.org
Online: www.unsworthacademy.org.uk