

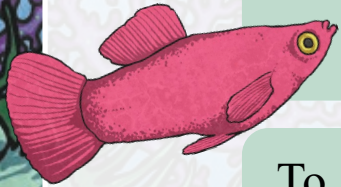
# Adding Fractions with Denominators That Are Multiples of the Same Number



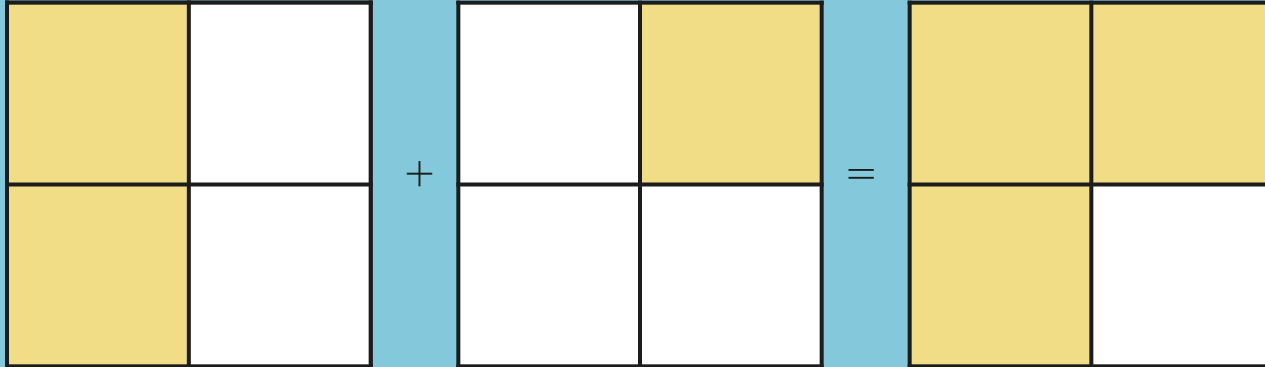
# Adding Fractions

These fractions have denominators that are multiples of the same number.

$$\frac{1}{2} + \frac{1}{4} = \frac{2}{4} + \frac{1}{4} = \frac{3}{4}$$



To add, convert the fractions into equivalent fractions with the same denominator. Then add the numerators.



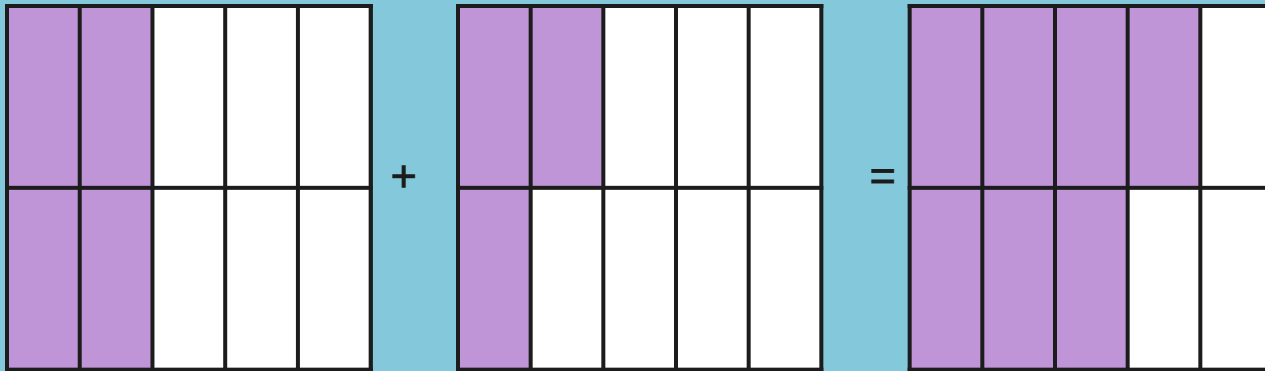
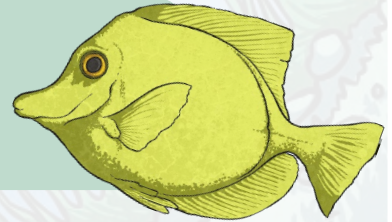
Hide  
Answers



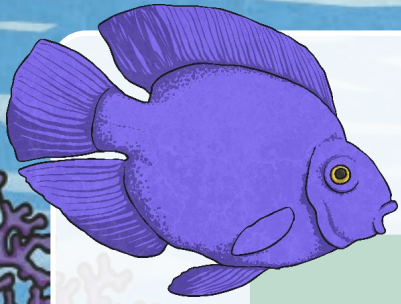
# Adding Fractions

Add these fractions.

$$\frac{2}{5} + \frac{3}{10} = \frac{4}{10} + \frac{3}{10} = \frac{7}{10}$$



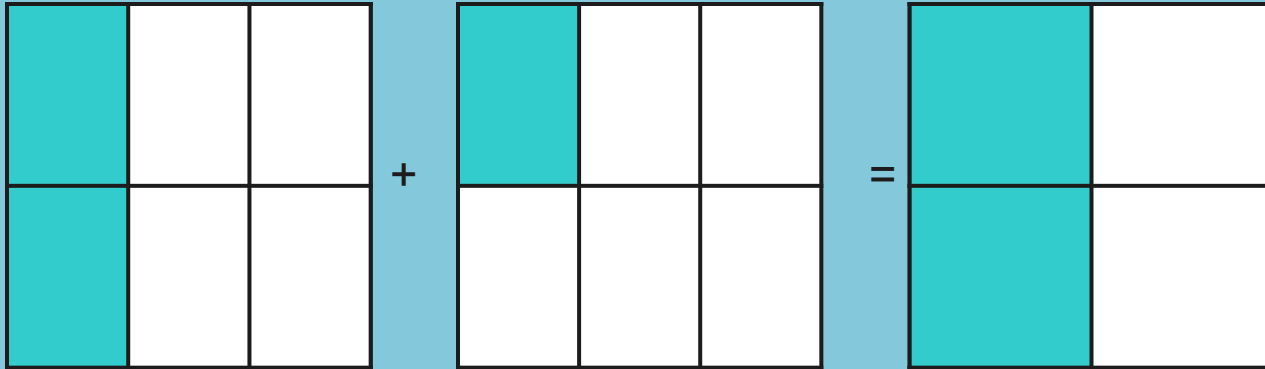
Hide  
Answers



# Adding Fractions

Add these fractions.

$$\frac{1}{3} + \frac{1}{6} = \frac{2}{6} + \frac{1}{6} = \frac{3}{6} \text{ or } \frac{1}{2}$$



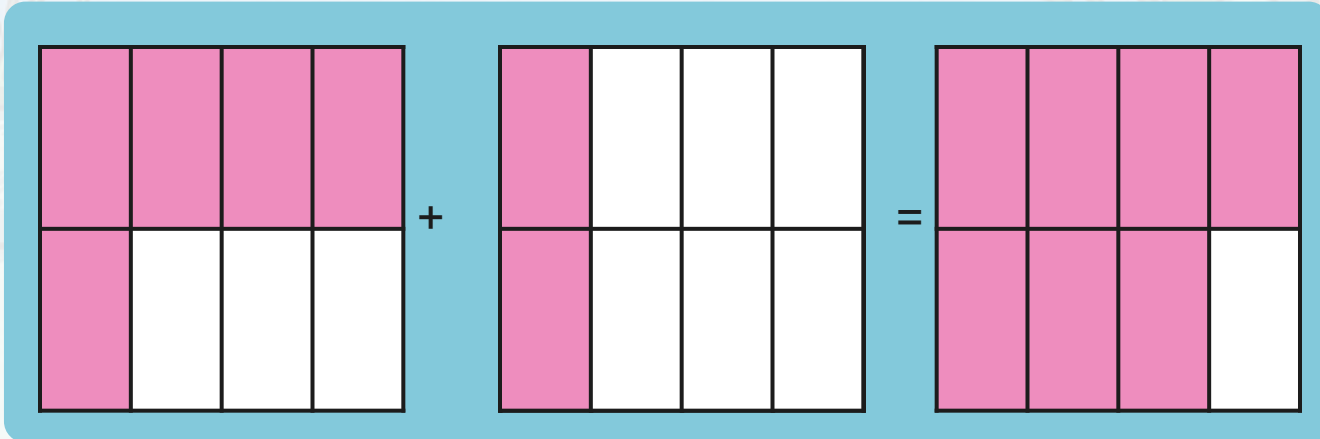
Hide  
Answers



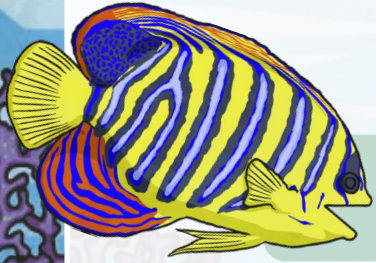
# Adding Fractions

Add these fractions.

$$\frac{5}{8} + \frac{1}{4} = \frac{5}{8} + \frac{2}{8} = \frac{7}{8}$$



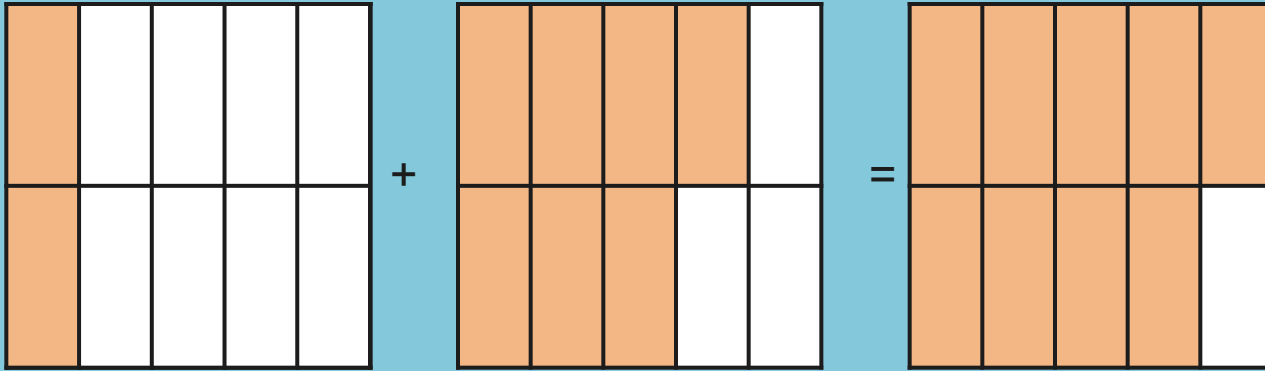
Hide  
Answers



# Adding Fractions

Add these fractions.

$$\frac{1}{5} + \frac{7}{10} = \frac{2}{10} + \frac{7}{10} = \frac{9}{10}$$



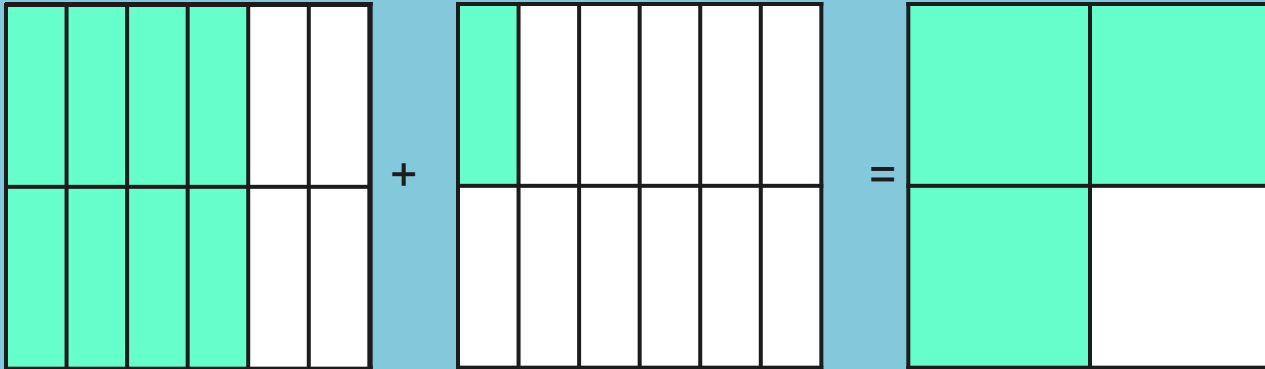
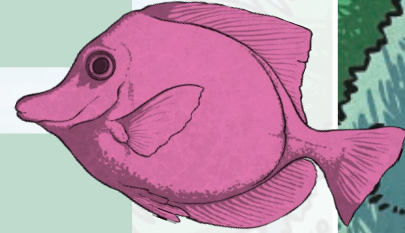
Hide  
Answers



# Adding Fractions

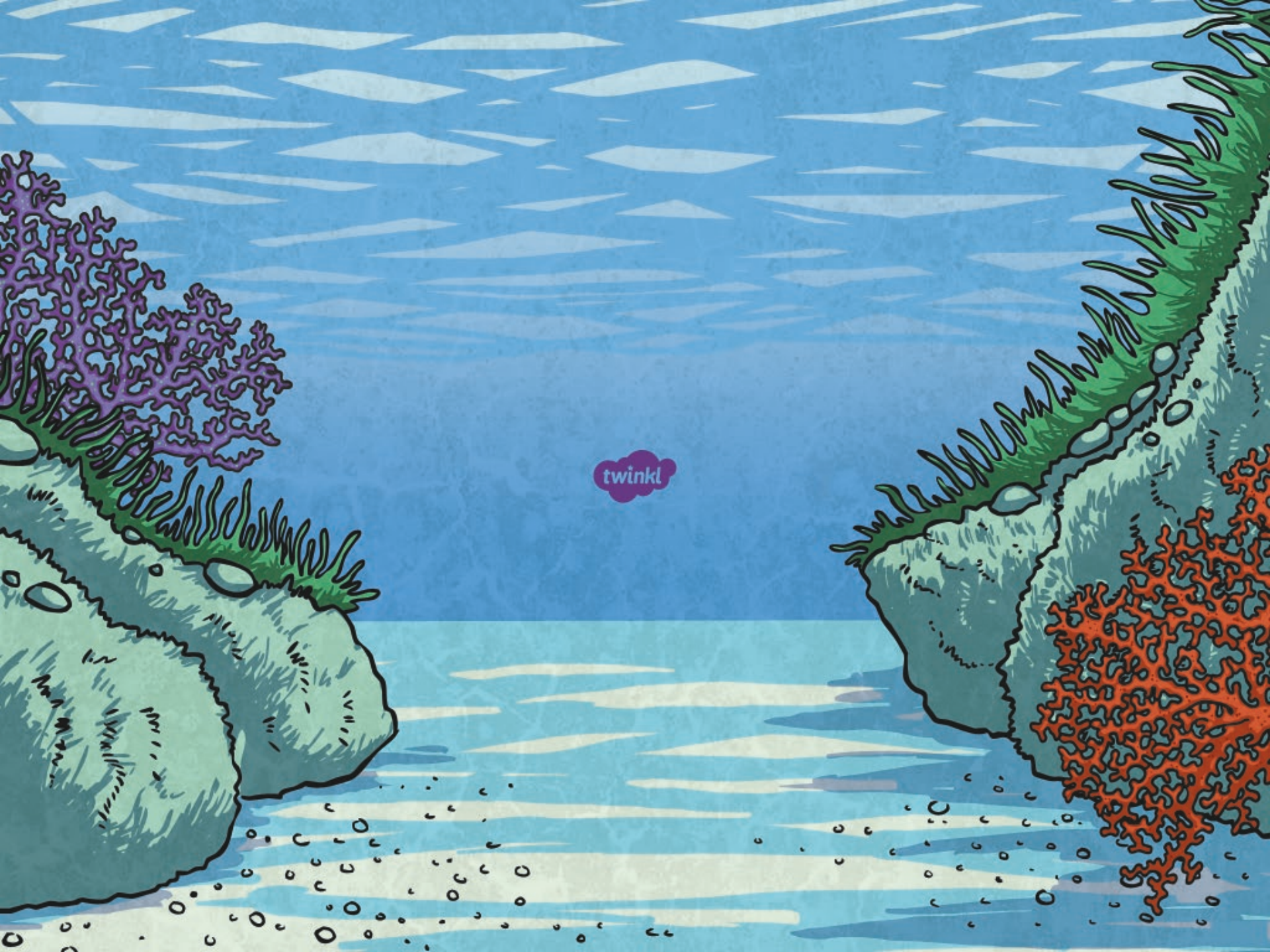
Add these fractions.

$$\frac{2}{3} + \frac{1}{12} = \frac{8}{12} + \frac{1}{12} = \frac{9}{12} \text{ or } \frac{3}{4}$$



Hide  
Answers





twinkl