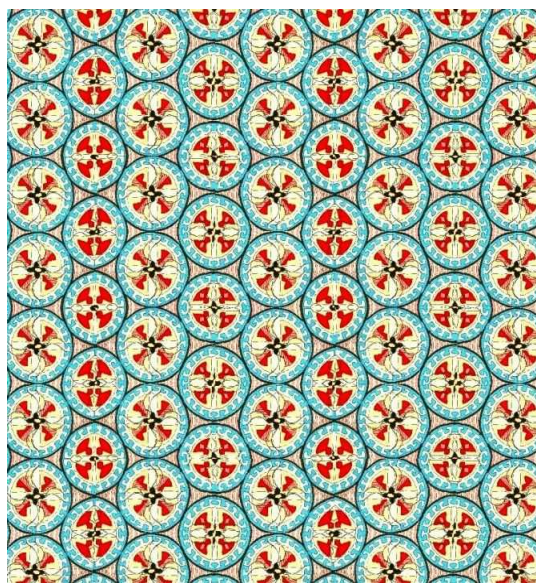
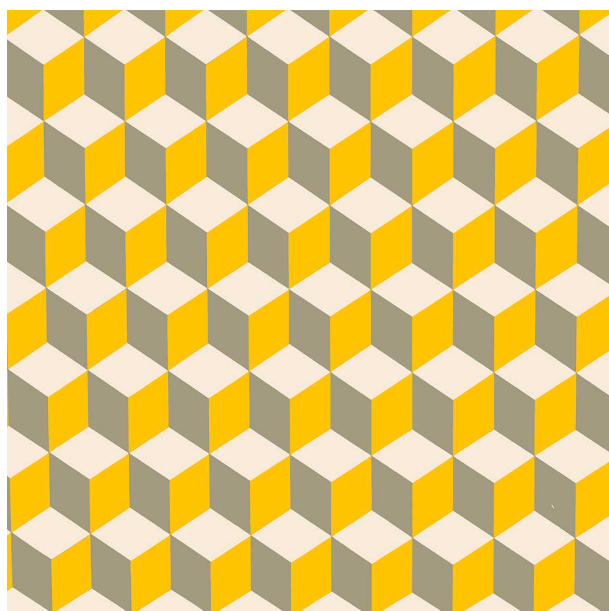


Can I describe the main features of art that uses repeating patterns?

Can I use 2Paint a Picture to create my own art by repeating patterns in a variety of ways?

Can I combine more than one effect in 2Paint a Picture to enhance my patterns?

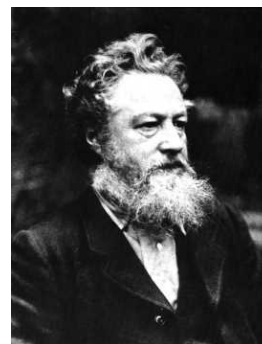


What do these paintings have in common?



William Morris was an English artist, poet and politician. He was incredibly creative and he produced decorative art in a range of different forms, including: textiles, furniture, wallpaper, stained glass windows, book design and tapestry.

- > William Morris lived and worked during the Victorian era. He was born in 1834 and he died in 1896.
- > He earned a degree from Exeter College, Oxford. After his graduation he started to work as an architect.
- > In 1859 William Morris married Jane Burden and had a house built for them on Bexley Heath, called Red House. William and Jane designed all of the interiors and decoration themselves and did most of the work. They were so happy with the results that they decided to start their own fine art craft work company.



In 1861 their company started to make furniture, tableware, soft furnishings and wallpaper. All of the items produced were handcrafted.

By the mid-1860s, William Morris concentrated on designing wallpaper. His patterns were inspired by the natural world, and these are some his best-known works of art.

- > When William Morris died in 1896, his doctor said that Morris had carried out the work of ten men during his lifetime.

# Task 1: To design a William Morris style wallpaper.

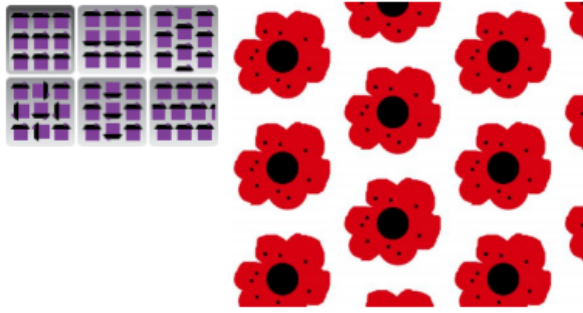


Whatever you draw in the top left square is repeated in the main page



DON'T FORGET - the Undo button and to change the thickness of the pen.





Now you can change the way that the pattern repeats by exploring the effect of clicking on the different Repeat Style buttons.

A lot of wallpaper designs will use a half-drop pattern, giving a diagonal effect.



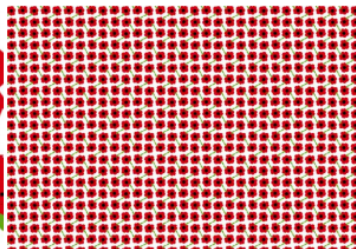
Now try to explore how different rotations affect the pattern of the same basic shape:



From:



To:

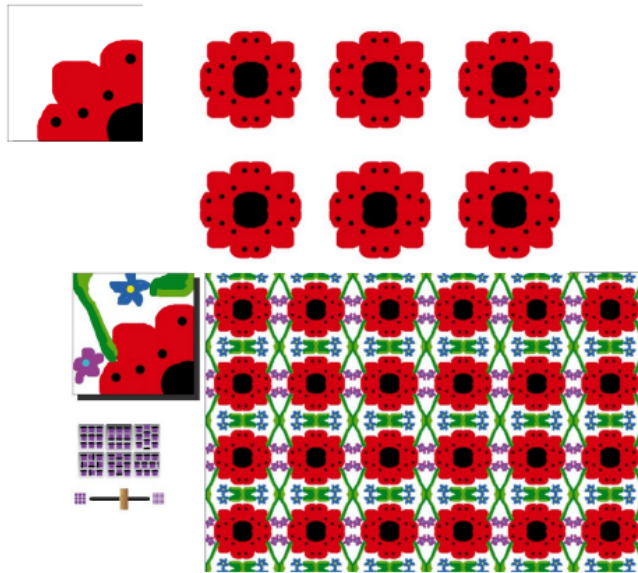




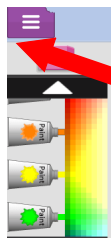
### CHALLENGE

There is a different way to do this, try drawing a quarter of a flower in the corner and making a rotating repeat that matches up the quarter flowers.

Try adding a stem and some smaller flowers to see the effect of this. The added small details are very reminiscent of William Morris's designs.



Remember to Save your work so your teachers can mark it.



- 1) Click on the purple tab.
- 2) Click on Save
- 3) Name your work -  
Wallpaper
- 4) Click Save

