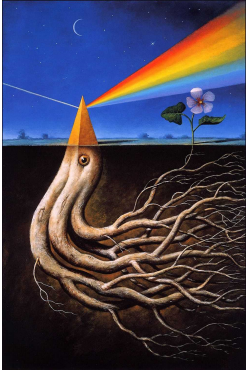
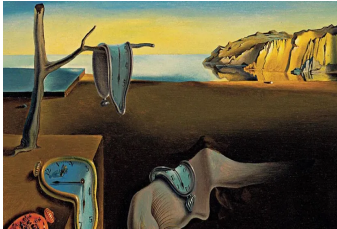


Can I describe surrealist art?

Can I use the eCollage function in 2Paint a Picture to create my own surrealist art using drawing and clipart?

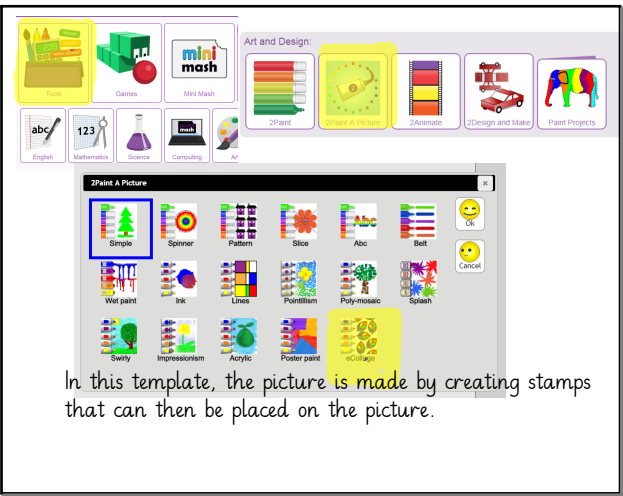
What do these paintings have in common?



Surrealism began in the 1920s. It was about experimenting with your imagination and exploring dreams. Surrealists often put together objects that were not normally seen together.

Jul 15-09:34

Jul 15-09:35






Oct 28-09:50

Jul 15-09:45

Computing lesson 5 Surrealism 2.2.21.notebook



The stamps are made in the top left corner box by

- drawing something
- adding and combining clipart (by clicking on the button  in the top toolbar)
- adding your own images from your computer, by clicking on the button  in the top toolbar and then the button 

Select a piece of clipart to be the 'stamp'.
Look at how it can be recoloured and how the size of the stamp can be altered using the sliders below the stamp image.



Then 'stamp' on the page. If you click on the picture, the image will be stamped in that place.
Remember the Undo button to undo anything that doesn't look how you wanted.

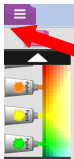
This way, you can build up some quite surreal images!

Oct 28-09:54

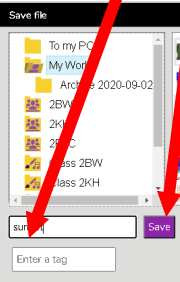
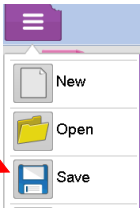
Oct 28-09:57



Remember to Save your work so your teachers can mark it.



- 1) Click on the purple tab.
- 2) Click on Save
- 3) Name your work - Surrealism
- 4) Click Save



Oct 28-10:00

