



# VALLEY GEOGRAPHY NEWS



What is geography?

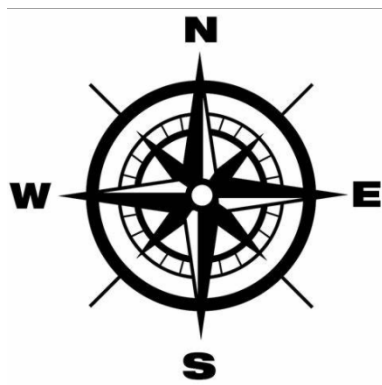
?



It's been a great week for..

Wild Beaver Families!

For the first time in 400 years, beavers have successfully established themselves in the wild in south-west England without the help of humans.



Where is SW England?





Let's read a little more about it...



Can you spot the river Avon?

(Clue: it is in SW England)

A little song to help us remember the points of a compass





Where is England?

## Continents and Oceans



What continent is it in?

Wally the walrus spotted again  
Hofn, Iceland.

Wally the Walrus has been spotted in Iceland. The Walrus has travelled all around Europe, appearing in France, Ireland, Spain and the UK. He has become a celebrity in the process with people following his movements online. Now, Wally has arrived in the town of Hofn, Iceland. Experts believe he is building up his reserves of blubber (fat) before heading home to the Arctic.



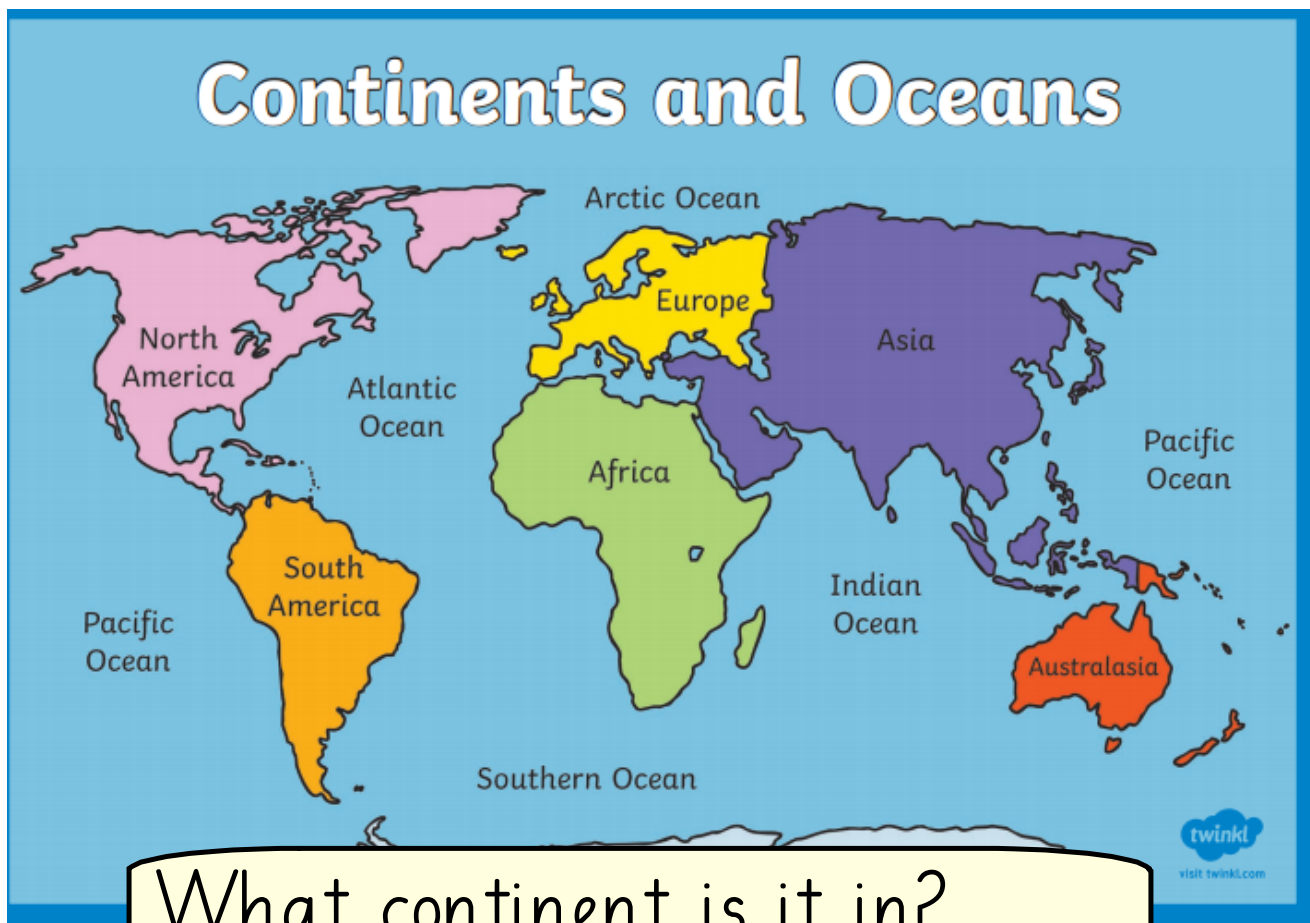


Let's learn a little more...



Where is Iceland?

# Continents and Oceans



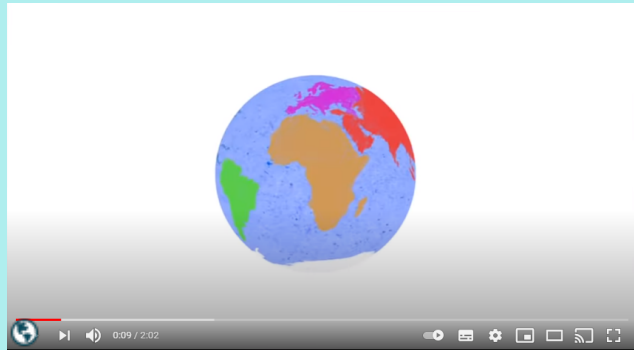
What continent is it in?

Use your atlases to find where Wally has been so far:

France, Ireland, Spain, UK and Iceland.

Where might he go next do you think?  
Use your map to help you predict where you think he might pop up next!

## The Continents Song



## Five Oceans Song



Stories taken from The Week  
Junior and Google.