

Year 2 Maths Activity Mat: Autumn 1

6

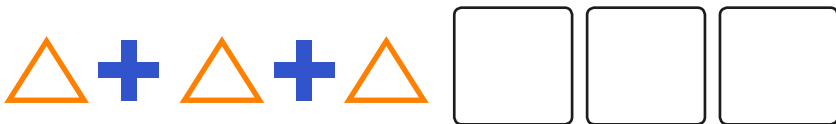
Section 1

$35p - 15p = \square$ $21p - 4p = \square$

$24p - 10p = \square$

Section 2

Continue the pattern.



Section 5

A bus has got 15 people on board.

6 people get off.

How many are on the bus?



Section 7

Match up the equation with the answer.

$16 - 3$ 20

$24 - 4$ 13

$19 - 8$ 11

Section 3

What comes next?

16, 26, 36, \square , \square , \square

Section 6

2 less

17

2 more

2 less

13

2 more

Section 4

Use these signs $<$ $>$ to show the most or least amount.

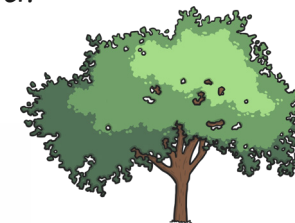
$62p \square 26p$

$13p \square 14p$

$27p \square 32p$

Section 8

What unit would you use to measure the tallest tree? Put a circle around your answer.



cm

m

£

pennies

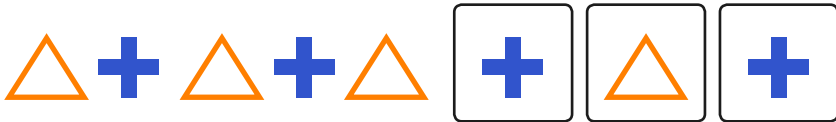
Section 1

$35p - 15p = 20p$ $21p - 4p = 17p$

$24p - 10p = 14p$

Section 2

Continue the pattern.



Section 3

What comes next? 16, 26, 36, , ,

Section 4

Use these signs $<$ $>$ to show the most or least amount.

$62p > 26p$ $13p < 14p$

$27p < 32p$

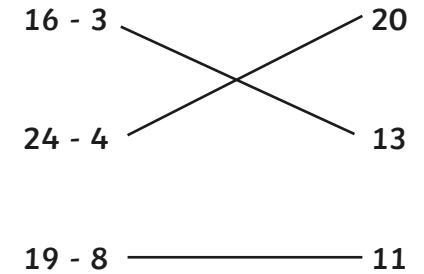
Section 5

A bus has got 15 people on board.
6 people get off.
How many are on the bus?



Section 7

Match up the equation with the answer.



Section 6

2 less 2 more
 17

2 less 2 more
 13

Section 8

What unit would you use to measure the tallest tree? Put a circle around your answer.



cm m £ pennies

Year 2 Maths Activity Mat: Autumn 1

6

Section 1

$92p - 21p = \square$

$39p - 11p = \square$

$80p - 15p = \square$

Section 2

Continue the pattern.

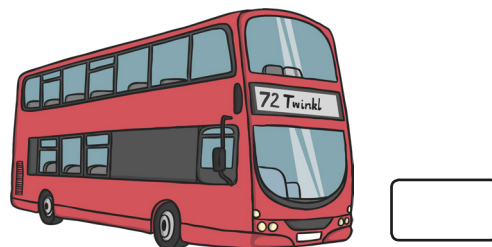


Section 5

A bus has 28 people on board.

11 people get off.

How many people are on the bus?



Section 7

Match up the equation with the answer.

$29 - 12$

26

$34 - 8$

17

$41 - 9$

32

Section 3

What comes next?

13, 15, 17, \square , \square , \square

Section 6

2 less

48

2 more

2 less

31

2 more

Section 4

Use these signs $<$ $>$ to show the most or least amount.

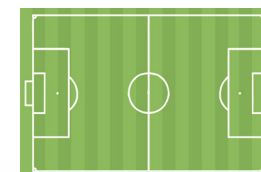
£1.12 \square £1.05

£1.82 \square £1.28

£1.09 \square £9.01

Section 8

What unit would you use to measure the length of a football pitch? Put a circle around your answer.



cm

m

£

mm

Section 1

$92p - 21p = 71p$ $39p - 11p = 28p$

$80p - 15p = 65p$

Section 2

Continue the pattern.



Section 3

What comes next? 13, 15, 17, , ,

Section 4

Use these signs $<$ $>$ to show the most or least amount.

$£1.12 > £1.05$ $£1.82 > £1.28$

$£1.09 < £9.01$

Section 5

A bus has 28 people on board.

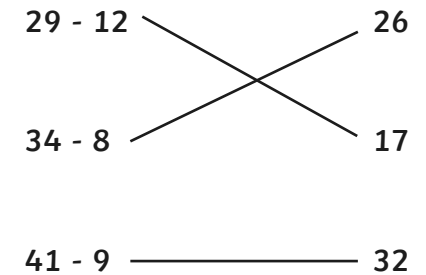
11 people get off.

How many people are on the bus?



Section 7

Match up the equation with the answer.



Section 6

2 less 2 more

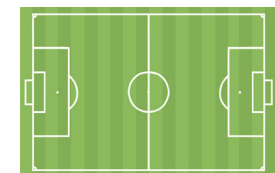
48

2 less 2 more

31

Section 8

What unit would you use to measure the length of a football pitch? Put a circle around your answer.



cm £ mm

Year 2 Maths Activity Mat: Autumn 1

6

Section 1

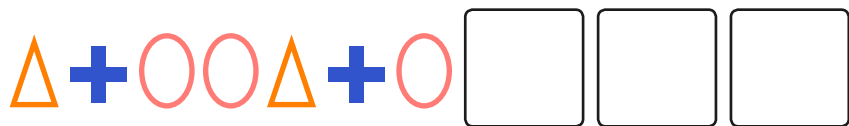
$$£1.24 - 20p = \square$$

$$£1.50 - 40p = \square$$

$$£1.13 - 30p = \square$$

Section 2

Continue the pattern.



Section 3

What comes next?

71, 66, 61, , ,

Section 4

Use these signs $<$ $>$ to show the most or least amount.

£2.13 £3.09

£1.16 £1.17

£5.24 £2.54

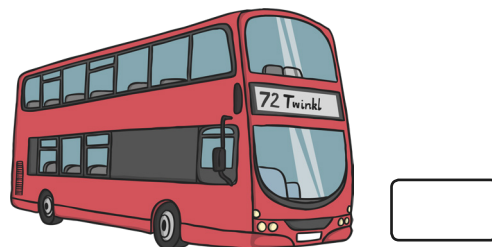
Section 5

A bus has 13 people on board.

4 people get off.

One more passenger gets on.

How many people are on the bus?



Section 7

Match up the equation with the answer.

$$96 - 15$$

94

$$106 - 12$$

81

$$77 - 19$$

58

Section 6

2 less

2 more

128

2 less

2 more

114

Section 8

Name 3 things you would measure using metres.

Section 1

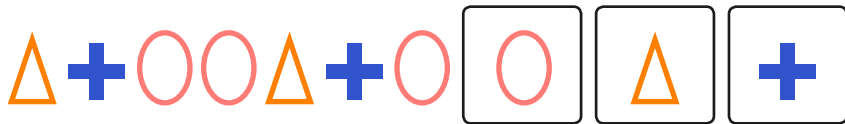
$$£1.24 - 20p = \boxed{£1.04}$$

$$£1.50 - 40p = \boxed{£1.10}$$

$$£1.13 - 30p = \boxed{83p}$$

Section 2

Continue the pattern.



Section 3

What comes next?

71, 66, 61, , ,

Section 4

Use these signs $<$ $>$ to show the most or least amount.

$$£2.13 \quad \boxed{<} \quad £3.09$$

$$£1.16 \quad \boxed{<} \quad £1.17$$

$$£5.24 \quad \boxed{>} \quad £2.54$$

Section 5

A bus has 13 people on board.

4 people get off.

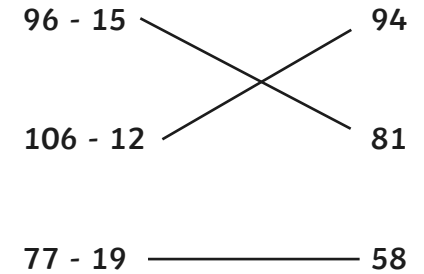
One more passenger gets on.

How many people are on the bus?



Section 7

Match up the equation with the answer.



Section 6

2 less

128

2 more

2 less

114

2 more

Section 8

Name 3 things you would measure using metres.

3 things that can be measured in metres.