

Year 11 (2018 V1)

26 students

9
8
7
6
5
4
3
2
1



05 September 2018

(2018) KS4 Progress 5 Examination Analysis

Version: 2.1

A8 Points: 2017

PLT - Victory Park Academy

Summer 2 (2018)

Progress 5 Examination Analysis

Page 1	Victory Park Academy - Front
Page 2	Page INDEX
Page 3	(1-9) and Progress 5 Headlines
Page 4	(1-9) Headlines
Page 5	(2-9) Headlines
Page 6	(3-9) Headlines
Page 7	GCSE English Graph
Page 8	GCSE Mathematics Graph
Page 9	GCSE Biology Graph
Page 10	GCSE Art Graph
Page 11	GCSE Media Graph
Page 12	GCSE PWL Graph
Page 13	GCSE English and Mathematics Pupil Premium
Page 14	Vocational Analysis
Page 15	All students' examination results A-Z
Page 16 -	Individual student exam grade-sheets
Page 45 -	

PLT Victory Park Academy

KS4, attainment, thresholds by pupil characteristics		5/5+ (1-9) with EM	5/5+ (2-9) with EM	5/5+ (3-9) with EM	5/5+ (4-9) with EM	5/5+ (5-9) with EM	Progress 5			
							Cohort	P5	Cohort	Total Attainment 5 Ps
All	26	17 65.4%	9 34.6%	3 11.5%	1 3.8%	0 0.0%	23	-1.69	26	15.02
Male	21	14 66.7%	9 42.9%	3 14.3%	1 4.8%		20	-1.69	21	16.17
Female	5	3 60.0%					3	-1.72	5	10.20
SENDK	25	16 64.0%	9 36.0%	3 12.0%	1 4.0%		23	-1.69	25	14.96
SENDE	0	0					0			
KS2 Higher	1	1 100.0%	1 100.0%	1 100.0%	1 100.0%		1	-2.03	1	33.50
KS2 Middle	21	14 66.7%	8 38.1%	2 9.5%			21	-1.72	21	15.29
KS2 Lower	1	0 0.0%					1	-0.79	1	11.00
No KS2	3	2 66.7%							3	8.33
Pupil Premium	12	6 50.0%	3 25.0%				10	-1.98	12	11.04
Non Pupil Premium	14	11 78.6%	6 42.9%	3 21.4%	1 7.1%		13	-1.47	14	18.43
First Language - Other	1	1 100.0%	1 100.0%	1 100.0%			1	0.16	1	26.00
First Language - English	25	16 64.0%	8 32.0%	2 8.0%	1 4.0%		22	-1.78	25	14.58
Year 7 Start	0	0					0			
Year 8 Start	1	1 100.0%	1 100.0%				1	-1.16	1	18.00
Year 9 Start	5	2 40.0%	1 20.0%				5	-2.17	5	10.40
Year 10 Autumn Start	4	2 50.0%					3	-1.77	4	7.38
Year 10 Spring Start	5	4 80.0%	3 60.0%	2 40.0%	1 20.0%		5	-2.02	5	21.60
Year 10 Summer Start	3	2 66.7%	1 33.3%				3	-0.91	3	19.50
Year 11 Autumn Start	7	5 71.4%	3 42.9%	1 14.3%			6	-1.46	7	16.57
Year 11 Spring Start	1	1 100.0%					0		1	8.50

Year 11 (2018 V1)

PLT Victory Park Academy

(1-9) Analysis by pupil characteristics		1/1+ (1-9)	2/2+ (1-9)	3/3+ (1-9)	4/4+ (1-9)	5/5+ (1-9)	Total Attainment 5 Pts
All	26	23 88.5%	23 88.5%	23 88.5%	20 76.9%	19 73.1%	15.02
Male	21	19 90.5%	19 90.5%	19 90.5%	16 76.2%	15 71.4%	16.17
Female	5	4 80.0%	4 80.0%	4 80.0%	4 80.0%	4 80.0%	10.20
SENDK	25	22 88.0%	22 88.0%	22 88.0%	19 76.0%	18 72.0%	14.96
SENDE	0	0					
KS2 Higher	1	1 100.0%	1 100.0%	1 100.0%	1 100.0%	1 100.0%	33.50
KS2 Middle	21	19 90.5%	19 90.5%	19 90.5%	16 76.2%	16 76.2%	15.29
KS2 Lower	1	1 100.0%	1 100.0%	1 100.0%	1 100.0%		11.00
No KS2	3	1 66.7%	2 66.7%	2 66.7%	2 66.7%	2 66.7%	8.33
Pupil Premium	12	9 75.0%	9 75.0%	9 75.0%	8 66.7%	7 58.3%	11.04
Non Pupil Premium	14	9 100.0%	14 100.0%	14 100.0%	12 85.7%	12 85.7%	18.43
First Language - Other	1	1 100.0%	1 100.0%	1 100.0%	1 100.0%	1 100.0%	26.00
First Language - English	25	22 88.0%	22 88.0%	22 88.0%	19 76.0%	18 72.0%	14.58
Year 7 Start	0	0					
Year 8 Start	1	1 100.0%	1 100.0%	1 100.0%	1 100.0%	1 100.0%	18.00
Year 9 Start	5	4 80.0%	4 80.0%	4 80.0%	3 60.0%	3 60.0%	10.40
Year 10 Autumn Start	4	3 75.0%	3 75.0%	3 75.0%	2 50.0%	2 50.0%	7.38
Year 10 Spring Start	5	5 100.0%	5 100.0%	5 100.0%	5 100.0%	5 100.0%	21.60
Year 10 Summer Start	3	3 100.0%	3 100.0%	3 100.0%	2 66.7%	2 66.7%	19.50
Year 11 Autumn Start	7	6 85.7%	6 85.7%	6 85.7%	6 85.7%	5 71.4%	16.57
Year 11 Spring Start	1	1 100.0%	1 100.0%	1 100.0%	1 100.0%	1 100.0%	8.50

Year 11 (2018 V1)

PLT Victory Park Academy

(2-9) Analysis by pupil characteristics		1/1+ (2-9)	2/2+ (2-9)	3/3+ (2-9)	4/4+ (2-9)	5/5+ (2-9)	Total Attainment 5 Pts
All	26	22 84.6%	18 69.2%	16 61.5%	13 50.0%	10 38.5%	15.02
Male	21	18 85.7%	15 71.4%	14 66.7%	10 47.6%	10 47.6%	16.17
Female	5	4 80.0%	3 60.0%	2 40.0%	1 20.0%		10.20
SENDK	25	21 84.0%	17 68.0%	15 60.0%	12 48.0%	10 40.0%	14.96
SENDE	0	0					
KS2 Higher	1	1 100.0%	1 100.0%	1 100.0%	1 100.0%	1 100.0%	33.50
KS2 Middle	21	19 90.5%	16 76.2%	14 66.7%	11 52.4%	9 42.9%	15.29
KS2 Lower	1	1 100.0%					11.00
No KS2	3	1 33.3%	1 33.3%	1 33.3%	1 33.3%		8.33
Pupil Premium	12	9 75.0%	7 58.3%	6 50.0%	4 33.3%	3 25.0%	11.04
Non Pupil Premium	14	9 92.9%	11 78.6%	10 71.4%	9 64.3%	7 50.0%	18.43
First Language - Other	1	1 100.0%	1 100.0%	1 100.0%	1 100.0%	1 100.0%	26.00
First Language - English	25	21 84.0%	17 68.0%	15 60.0%	12 48.0%	9 36.0%	14.58
Year 7 Start	0	0					
Year 8 Start	1	1 100.0%	1 100.0%	1 100.0%	1 100.0%	1 100.0%	18.00
Year 9 Start	5	4 80.0%	3 60.0%	2 40.0%	1 20.0%	1 20.0%	10.40
Year 10 Autumn Start	4	3 75.0%	1 25.0%	1 25.0%	1 25.0%		7.38
Year 10 Spring Start	5	5 100.0%	5 100.0%	4 80.0%	3 60.0%	3 60.0%	21.60
Year 10 Summer Start	3	3 100.0%	3 100.0%	3 100.0%	2 66.7%	2 66.7%	19.50
Year 11 Autumn Start	7	6 85.7%	5 71.4%	5 71.4%	5 71.4%	3 42.9%	16.57
Year 11 Spring Start	1	0					8.50

Year 11 (2018 V1)

PLT Victory Park Academy

(3-9) Analysis by pupil characteristics		1/1+ (3-9)	2/2+ (3-9)	3/3+ (3-9)	4/4+ (3-9)	5/5+ (3-9)	Total Attainment 5 Pts
All	26	20 76.9%	15 57.7%	10 38.5%	8 30.8%	5 19.2%	15.02
Male	21	17 81.0%	13 61.9%	10 47.6%	8 38.1%	5 23.8%	16.17
Female	5	3 60.0%	2 40.0%				10.20
SENDK	25	19 76.0%	14 56.0%	10 40.0%	8 32.0%	5 20.0%	14.96
SENDE	0	0					
KS2 Higher	1	1 100.0%	1 100.0%	1 100.0%	1 100.0%	1 100.0%	33.50
KS2 Middle	21	17 81.0%	13 61.9%	9 42.9%	7 33.3%	4 19.0%	15.29
KS2 Lower	1	1 100.0%					11.00
No KS2	3	1 33.3%	1 33.3%				8.33
Pupil Premium	12	9 75.0%	6 50.0%	2 16.7%	1 8.3%		11.04
Non Pupil Premium	14	9 78.6%	9 64.3%	8 57.1%	7 50.0%	5 35.7%	18.43
First Language - Other	1	1 100.0%	1 100.0%	1 100.0%	1 100.0%	1 100.0%	26.00
First Language - English	25	19 76.0%	14 56.0%	9 36.0%	7 28.0%	4 16.0%	14.58
Year 7 Start	0	0					
Year 8 Start	1	1 100.0%	1 100.0%				18.00
Year 9 Start	5	4 80.0%	2 40.0%	1 20.0%			10.40
Year 10 Autumn Start	4	1 25.0%					7.38
Year 10 Spring Start	5	5 100.0%	4 80.0%	3 60.0%	3 60.0%	3 60.0%	21.60
Year 10 Summer Start	3	3 100.0%	3 100.0%	3 100.0%	2 66.7%	1 33.3%	19.50
Year 11 Autumn Start	7	6 85.7%	5 71.4%	3 42.9%	3 42.9%	1 14.3%	16.57
Year 11 Spring Start	1	1					8.50

Year 11 (2018 V1)

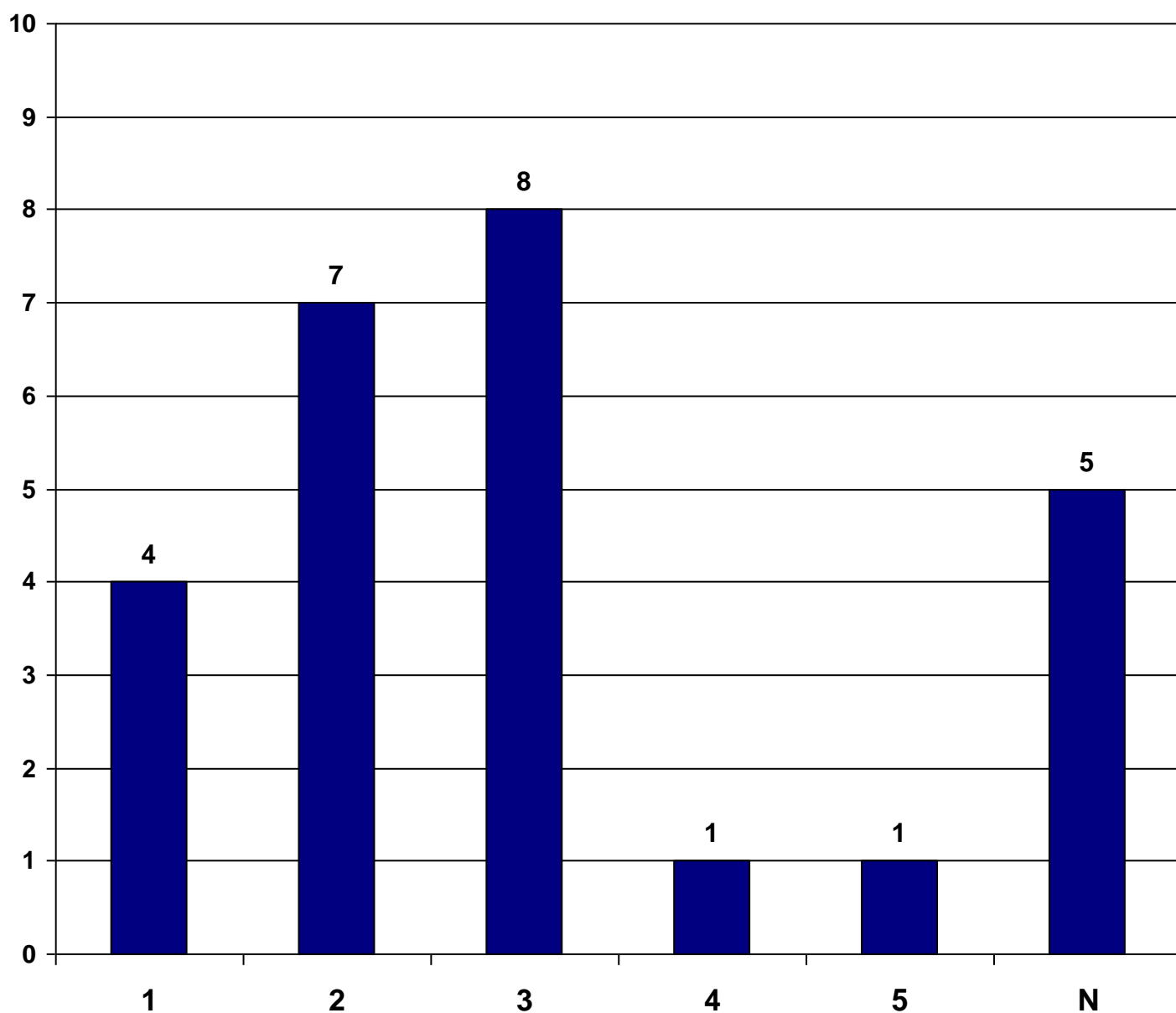
GCSE English Language



English Language

Entries: 26

APS	9-5	9-4	9-1	9	8	7	6	5	4	3	2	1	U/N/X
2.0	3.8%	7.7%	80.8%	0.0%	0.0%	0.0%	0.0%	3.8%	3.8%	30.8%	26.9%	15.4%	19.2%
				0	0	0	0	1	1	8	7	4	5



Year 11 (2018 V1)

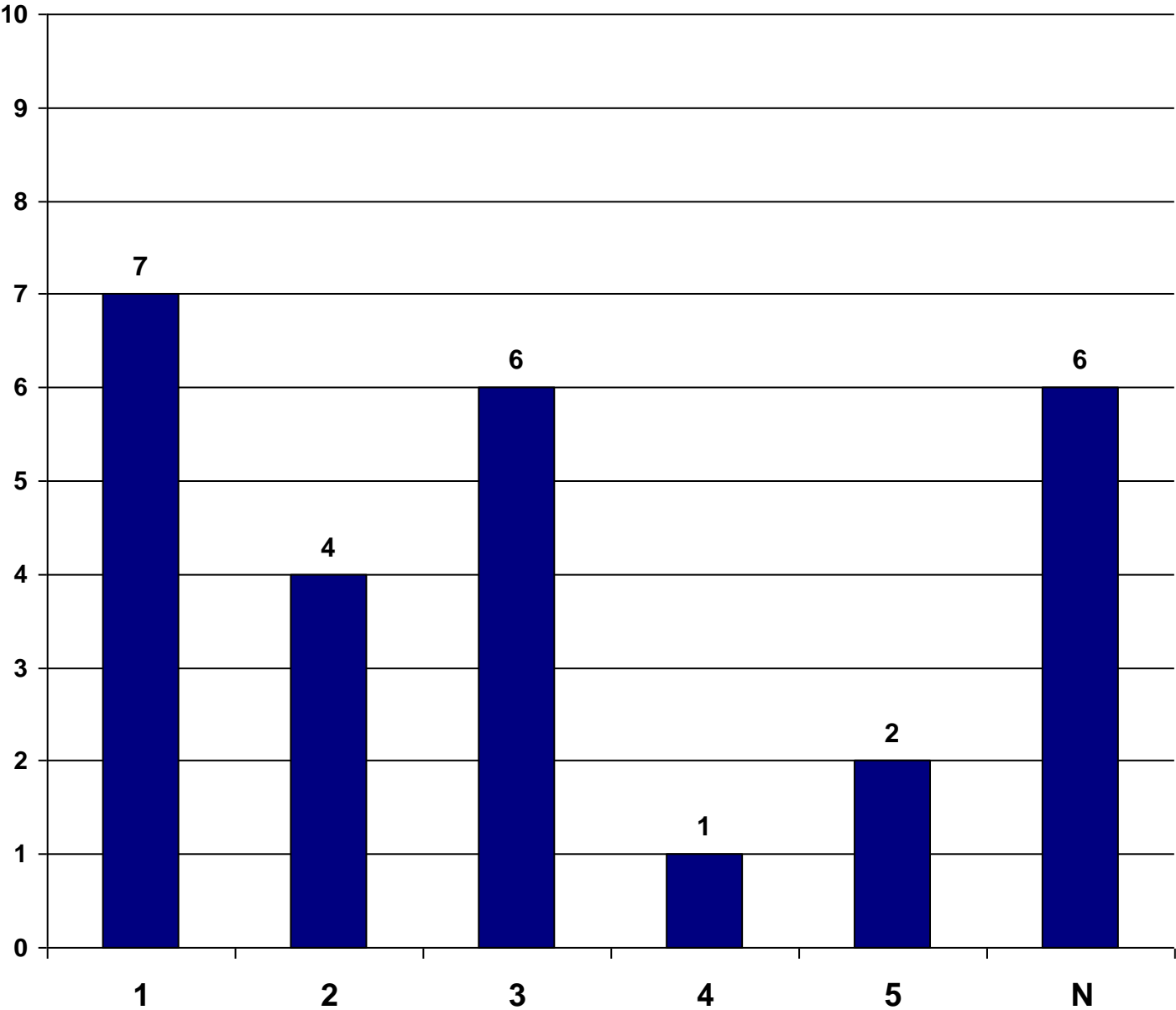
GCSE Mathematics



Mathematics

Entries: 26

APS	9-5	9-4	9-1	9	8	7	6	5	4	3	2	1	U/N/X
1.8	7.7%	11.5%	76.9%	0.0%	0.0%	0.0%	0.0%	7.7%	3.8%	23.1%	15.4%	26.9%	23.1%
				0	0	0	0	2	1	6	4	7	6



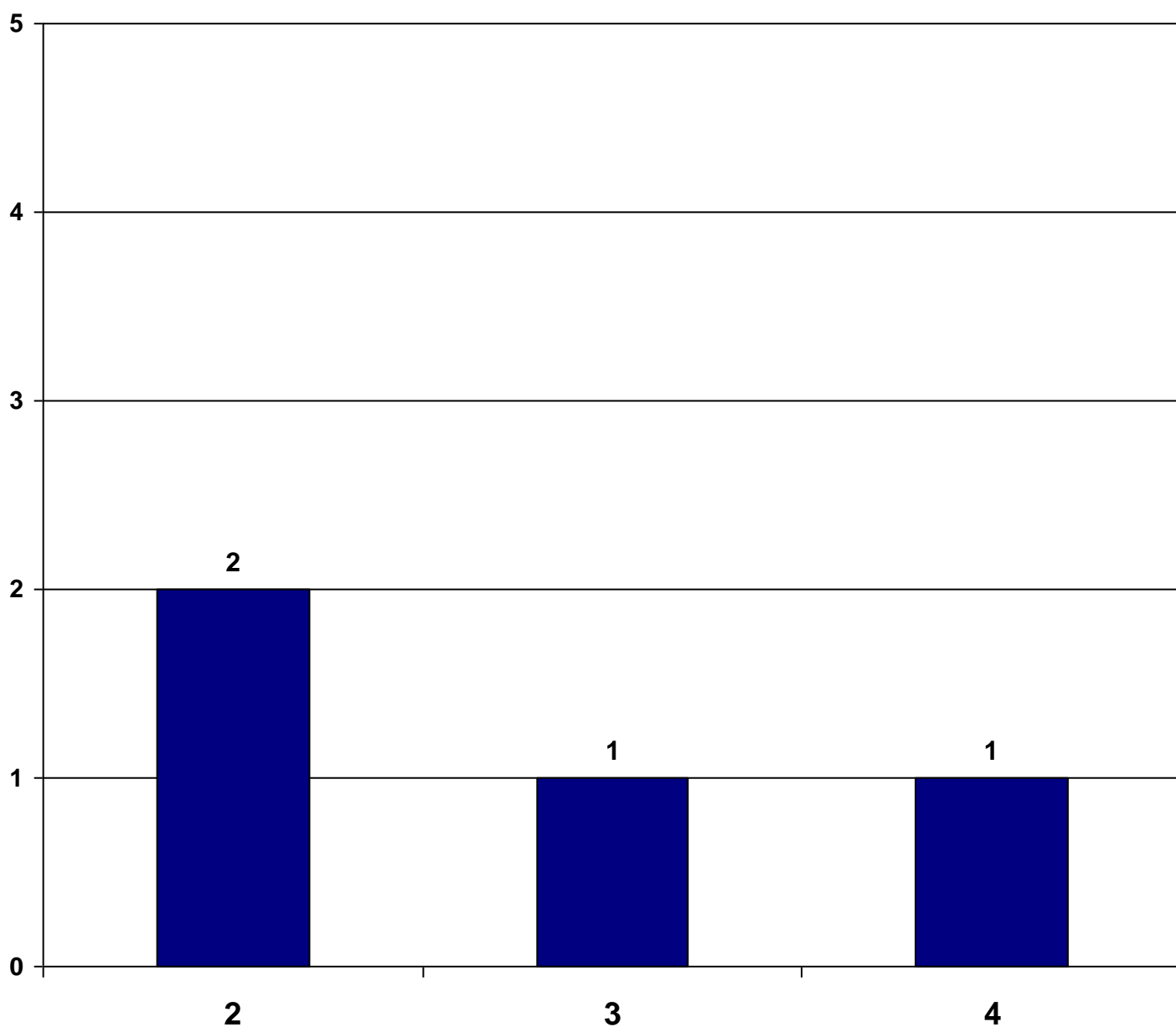
Biology



Biology

Entries: 4

APS	9-5	9-4	9-1	9	8	7	6	5	4	3	2	1	N/X
2.8	0.0%	25.0%	100.0%	0.0%	0.0%	0.0%	0.0%	0.0%	25.0%	25.0%	50.0%	0.0%	0.0%
				0	0	0	0	0	1	1	2	0	0



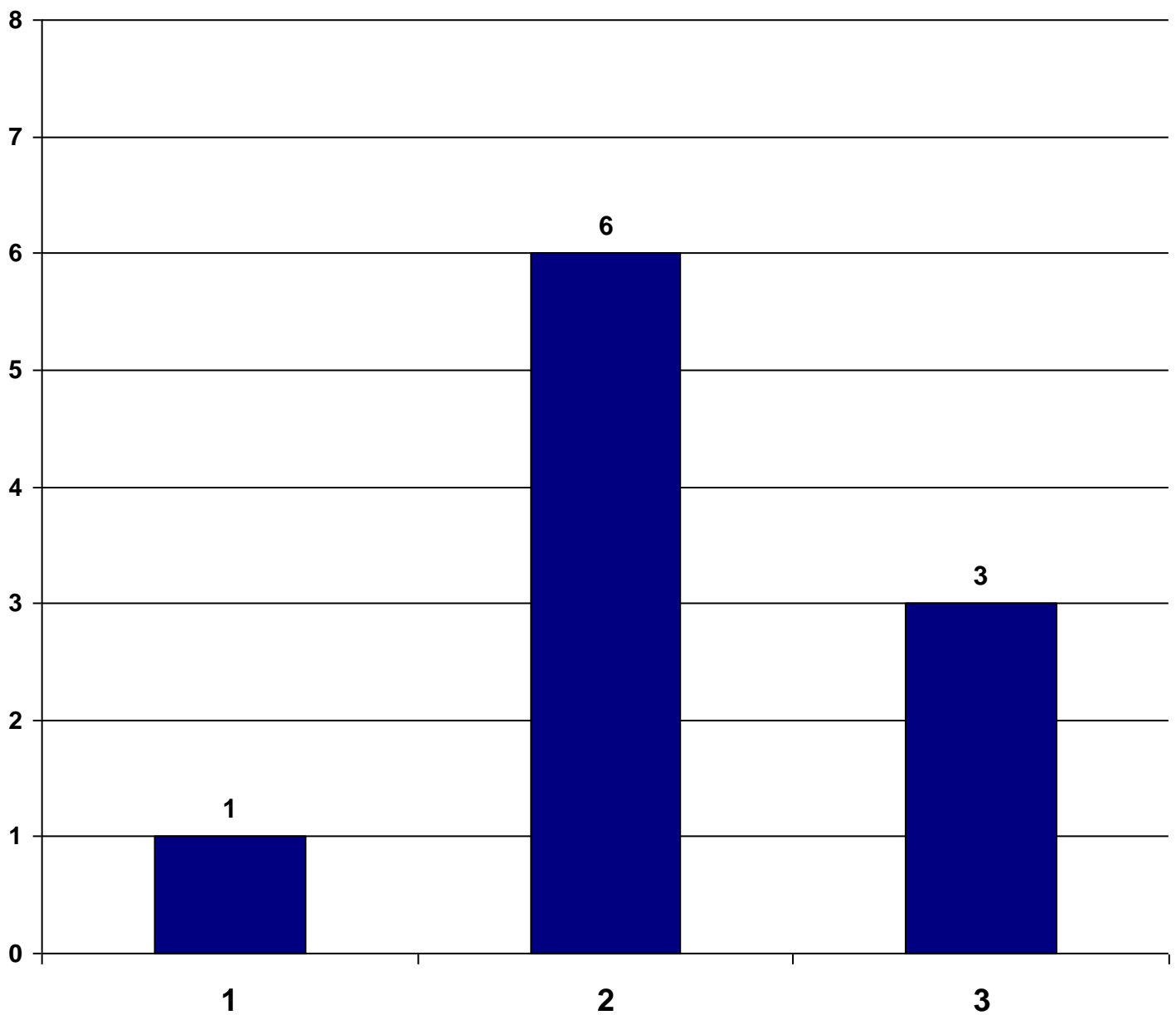
Art



Art

Entries: 10

APS	9-5	9-4	9-1	9	8	7	6	5	4	3	2	1	N/X
2.2	0.0%	0.0%	100.0%	0.0%	0.0%	0.0%	0.0%	0.0%	0.0%	30.0%	60.0%	10.0%	0.0%
				0	0	0	0	0	0	3	6	1	0

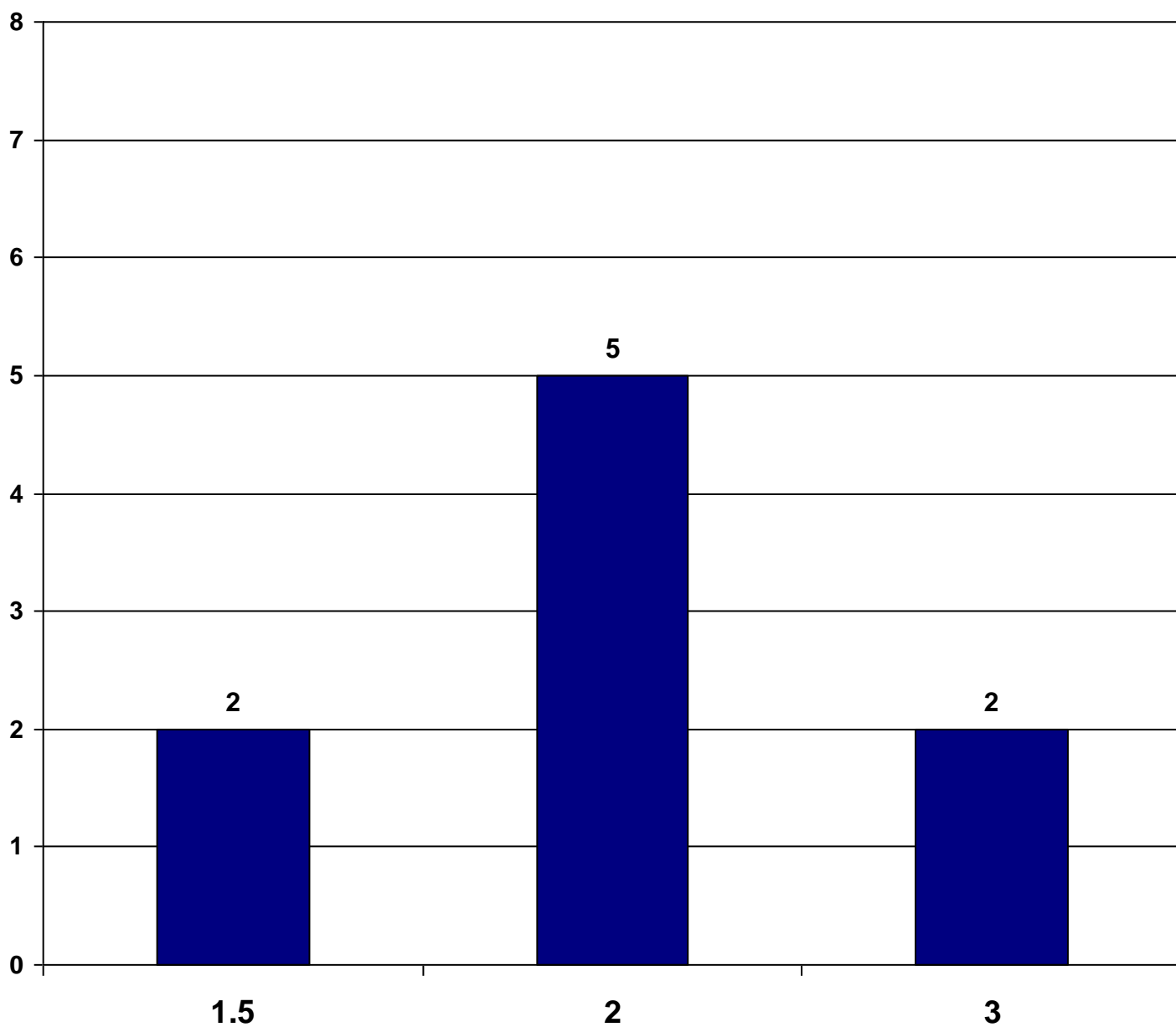


Media



Media

			A*	A	B	C	D	E	F	G	Entries: 9
APS	9-4	9-1	8	7	5.5	4	3	2	1.5	1	N/X
2.1	0.0%	0.0%	0.0%	0.0%	0.0%	0.0%	22.2%	55.6%	22.2%	0.0%	#Error
			0	0	0	0	2	5	2	0	0



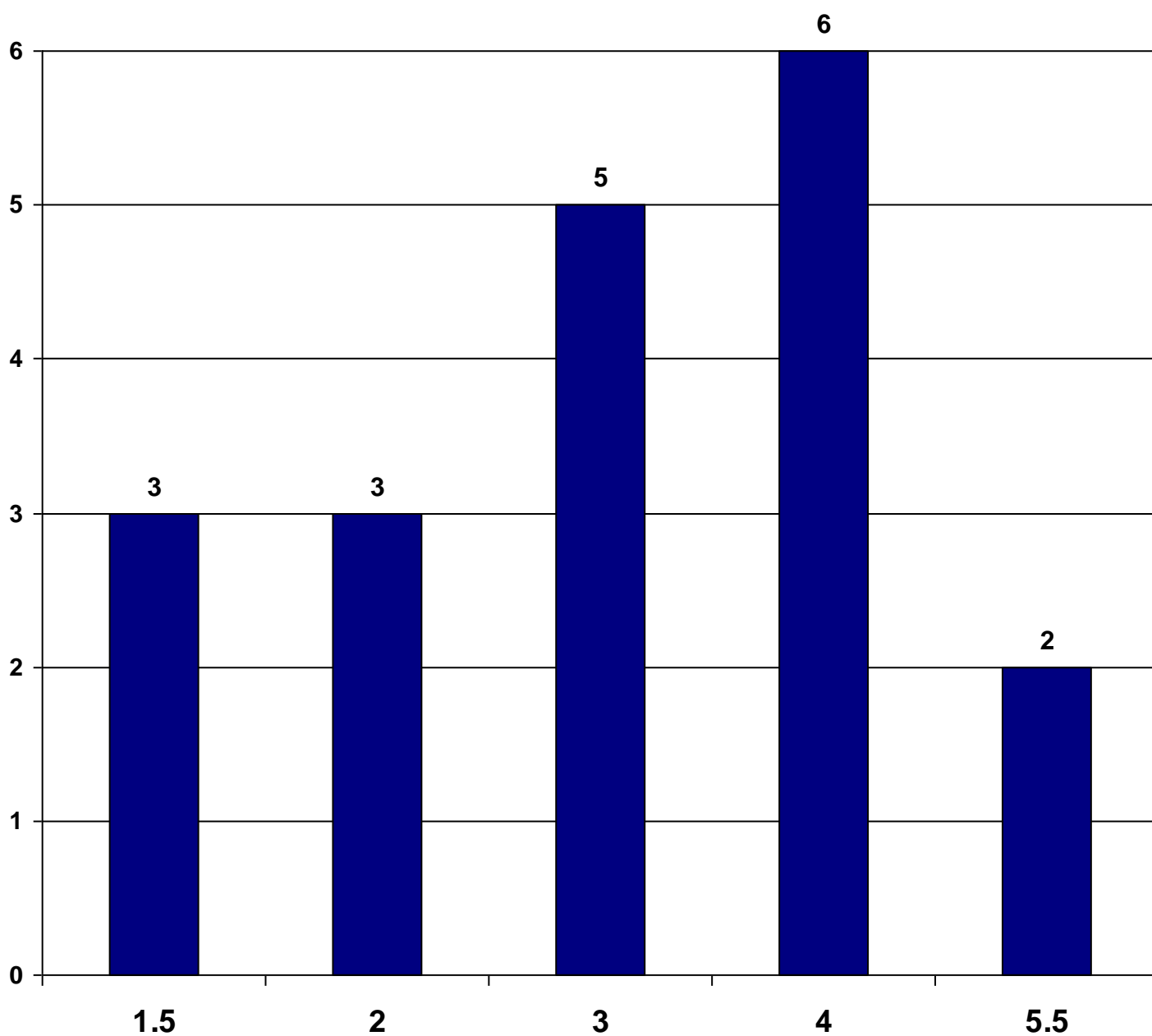
PWL (Full)



PWL (Full)

A* A B C D E F G Entries: 19

APS	9-4	9-1	8	7	5.5	4	3	2	1.5	1	N/X
3.2	31.6%	42.1%	0.0%	0.0%	10.5%	31.6%	26.3%	15.8%	15.8%	0.0%	0.0%
			0	0	2	6	5	3	3	0	0



Year 11 (2018 V1)

PLT Victory Park Academy

English Language

Entries: 26

APS	9-5	9-4	9-1	9	8	7	6	5	4	3	2	1	U/N/X
2.0	3.8%	7.7%	80.8%	0.0%	0.0%	0.0%	0.0%	3.8%	3.8%	30.8%	26.9%	15.4%	19.2%
				0	0	0	0	1	1	8	7	4	5

English Language - PPY

Entries: 12

APS	9-5	9-4	9-1	9	8	7	6	5	4	3	2	1	U/N/X
1.3	0.0%	0.0%	66.7%	0.0%	0.0%	0.0%	0.0%	0.0%	0.0%	16.7%	33.3%	16.7%	33.3%
				0	0	0	0	0	0	2	4	2	4

English Language - PPN

Entries: 14

APS	9-5	9-4	9-1	9	8	7	6	5	4	3	2	1	U/N/X
2.5	7.1%	14.3%	92.9%	0.0%	0.0%	0.0%	0.0%	7.1%	7.1%	42.9%	21.4%	14.3%	7.1%
				0	0	0	0	1	1	6	3	2	1

Mathematics

Entries: 26

APS	9-5	9-4	9-1	9	8	7	6	5	4	3	2	1	U/N/X
1.8	7.7%	11.5%	76.9%	0.0%	0.0%	0.0%	0.0%	7.7%	3.8%	23.1%	15.4%	26.9%	23.1%
				0	0	0	0	2	1	6	4	7	6

Mathematics - PPY

Entries: 12

APS	9-5	9-4	9-1	9	8	7	6	5	4	3	2	1	U/N/X
1.2	0.0%	0.0%	66.7%	0.0%	0.0%	0.0%	0.0%	0.0%	0.0%	16.7%	16.7%	33.3%	33.3%
				0	0	0	0	0	0	2	2	4	4

Mathematics - PPN

Entries: 14

APS	9-5	9-4	9-1	9	8	7	6	5	4	3	2	1	U/N/X
2.4	14.3%	21.4%	85.7%	0.0%	0.0%	0.0%	0.0%	14.3%	7.1%	28.6%	14.3%	21.4%	14.3%
				0	0	0	0	2	1	4	2	3	2

PLT Victory Park Academy

BTEC/Vocational attainment analysis

F/S English

Entries: 11

L2Pass	L1Pass	EL3	EL2	EL1
9.1%	72.7%	18.2%	0.0%	0.0%
1	8	2	0	0

F/S Mathematics

Entries: 14

L2Pass	L1Dist	L1Merit	L1Pass	EL3
0.0%	0.0%	0.0%	64.3%	35.7%
0	0	0	9	5

ICT (ECDL)

Entries: 13

L2Pass	L1Dist	L1Merit	L1Pass	EL3
100.0%	0.0%	0.0%	0.0%	0.0%
13	0	0	0	0

PE (NCFE)

Entries: 8

L2Pass	L1Dist	L1Merit	L1Pass	EL3
100.0%	0.0%	0.0%	0.0%	0.0%
8	0	0	0	0

L1 Sports Science

Entries: 15

L2Pass	L1Dist	L1Merit	L1Pass	EL3
6.7%	0.0%	0.0%	93.3%	0.0%
1	0	0	14	0

L1 Well Being

Entries: 18

L2Pass	L1Dist	L1Merit	L1Pass	EL3
0.0%	0.0%	0.0%	100.0%	0.0%
0	0	0	18	0

Health & Social

Entries: 3

L2Pass	L1Dist	L1Merit	L1Pass	EL3
0.0%	0.0%	0.0%	100.0%	0.0%
0	0	0	3	0

Hair & Beauty

Entries: 3

L2Pass	L1Dist	L1Merit	L1Pass	EL3
0.0%	0.0%	0.0%	100.0%	0.0%
0	0	0	3	0

L1 Mechanics

Entries: 2

L2Pass	L1Dist	L1Merit	L1Pass	EL3
0.0%	0.0%	0.0%	100.0%	0.0%
0	0	0	2	0