



# Wallace Fields Junior School Newsletter

Friday 19th April 2024



## DATES

### DATES NEXT WEEK

- **Monday 22nd April 2024** - Auditions for **Year 3** Music Assembly during music lesson.
- **Tuesday 23rd April 2024** - **Year 4** Musical Performance Assembly (1.15pm-1.45pm) Parents of musicians invited.
- **Wednesday 24th April 2024** - Deadline for **Year 6** Leavers' hoodies orders.
- **Thursday 25th April 2024** - **PTA Circus** - **3.30pm** BBQ opens, Circus Show 5pm to 8pm. Tickets have sold out!

[Click here<sup>1</sup>](#) for **School Calendar and to Subscribe to Calendar**

[Click Here<sup>2</sup>](#) for **Upcoming Events**

## HEAD'S UPDATE

**Rugby Union Player Claudia MacDonald Visit**- a very exciting end to the week with a visit from former pupil Claudia MacDonald who now plays rugby union professionally for England. She gave her time to talk in assembly about many topics including her route into professional rugby, working hard and how to approach challenges. I remember Claudia well and she remembered many of the staff including Mrs Clayton, Mr Hurd, Mrs Bruen and Mrs Salam who were all here whilst Claudia was a pupil. Claudia took some additional time to talk with Year 6 after assembly and also had a tour of the school - recalling her old classrooms and remembering the great times she had here. She was ambushed a few times for autographs and she signed a vast amount of bits of paper. She is currently injured - however she is on the television discussion panel before and after tomorrow's game between The Red Roses and Ireland at Twickenham (kick off is at 2.15pm) , so look out for her there and enjoy the game! Claudia also donated a signed shirt from her World Cup kit and I would like to thank her very sincerely for the huge amount of time she committed to her visit to her old school. We wish her well with her career and a swift recovery from injury.

**Stonehenge Models:** Congratulations to Year 3 with their amazing Stonehenge homework projects. A great deal of effort has gone into them and they look great with a huge array of creative and intriguing models. They are currently on display in the hall for all the other children to admire and read facts about Stonehenge.

### **BELIEVE! Do you know the school values?**

**BELIEVE!** The school values run right through the school. The letters in BELIEVE emphasise a school value that helps underpin all we do at Wallace Fields Junior School. Your children will know about it and we are keen to ensure you know about it as well. Each letter represents a value - Wallace Fields Junior School aims to provide a caring, vibrant and supportive environment with high expectations for success where every child can BELIEVE in their own academic and personal aspirations.

**Brilliance**- We believe every pupil can be brilliant in many things.

---

<sup>1</sup><https://wallacefields-jun.surrey.sch.uk/calendar>

<sup>2</sup><https://wallacefields-jun.surrey.sch.uk/events>

**Equality-** We believe all children at our school are treated equally and show respect and tolerance to each other and to all those they interact with.

**Learning** for all - We believe we can reach our full potential, with a growth mind-set and without limits. We learn in a rich and vibrant environment to stimulate learning at depth.

**Inspiration-** We believe our school inspires children in all classes to light the sparks that will set them off learning and loving more about the world around them.

**Enthusiasm-** We believe that enthusiasm drives through the children, teachers and staff and this builds us and binds us together as a school to do our best.

**Vision** – We believe we have a view to the future to equip children with the skills and attributes needed for high school and beyond. We believe every child has a vision of progress and achieving success.

**Every Pupil Matters** – We believe every child is treated as an individual, has a personality and character of their own and makes a difference in everything they do a person, a group or a citizen.

### Head Teacher's Awards

Head Teacher's Awards - March 2024					
Year 3	Year 4	5H	5S	Year 6	
Alice W	Eesa H	Clarissa W	Alexandra S	Amelia S	
Atlas A	Ella C	Felicity V	Andy W		
Carter D	Marta H	Isla H	Anna P		
Edward Y	Otis L	John G	Arjun N		
George C	Raphael S	Josh T	Arlo O		
Harper D	Rhea J	Maya S	Aurelia K		
Jacob C	Taran B	Momin A	Betty O		
Lander S	Violet D	Monty A	Celine P		
Layla B		Oz Y	Ciaran Y		
Morgan C		Pietro D	Daniel W		
Rihan S		Thomas V	Dylan W		
Scarlet O		Tony K	Ella V		
Teddy C			Henry C		
			Imogen D		
			Maia S		
			Naomi W		
			Sabrina P		
			Zach W		

### THIS WEEK

#### Visit by Former WFJS Pupil and England Rugby Player Claudia MacDonald

We were delighted to welcome former Wallace Fields Junior School pupil Claudia MacDonald. Claudia plays professional rugby for Exeter and has had 32 English caps reaching the finals in the

World Cup and winning the last few six nations thanks to many of her tries. She spoke in the school assembly talking about how she first played tag rugby for our school, about her rugby career as well as fond memories of Wallace Fields Junior School. She spent all morning at our school, answered pupils questions, had a tour of the school and signed autographs. Claudia's mum Jane, was a teacher at our school who sadly passed away when Claudia was 18, a number of years after, moving away. There is a bench in the quad committed to Jane MacDonald's memory, donated by the family and tended to by the children and staff of Wallace Fields Juniors. The children were inspired by Claudia's confidence and resilient attitude and she explained how hard work get results. Our thanks to Claudia for spending time talking with the children and making time to sign autographs.





### Visit by the Mobile Planetarium - Tuesday 16th April 2024

Year 4 have been learning about **Space** in their science curriculum and were very excited to welcome Wonder Dome Mobile Planetarium into Wallace Fields Junior School on **Tuesday 16th April 2024**. The children experienced the wonder of the universe within a huge indoor inflated dome in the school hall. From planet formation to the birth and death of stars, and launching rockets to stepping foot on other worlds, it was an unforgettable opportunity to bring the marvels of space right into our school. A few parents have still not paid £6 on Scopay; although the contribution is voluntary, without your contributions we may not be able to arrange similar exciting visits in the future.

<http://twitter.com/statuses/1780186114558439532>

### Scholastic Book Fair

We hope your children are enjoying their books from the Scholastic Book Fair, held at school before Easter. The fair raised over £850 for the school, which will be spent directly on books for the school library, class libraries and book sets for classrooms. Thank you very much for your tremendous support.

The book below was bought at the Scholastic Book Fair but found in the Year 6 block. **Who does it belong to?** Please contact the School Office.

ALAN GRATZ

#1 *New York Times* bestselling author  
of REFUGEE and GROUND ZERO

# TWO DEGREES

A planet in crisis. And time is running out.



## PTA AND FUNDRAISING

# WFJS PTA

19th April 2024

Get all tickets here  
[www.pta-events.co.uk/wfjspta](http://www.pta-events.co.uk/wfjspta)

### THE SUMMER TERM HAS ARRIVED, THE BUSIEST AND BEST TIME OF THE SCHOOL CALENDAR.

We see the return of The Circus, Race Night, Ice Cream sales and of course all the excitement of the Summer Fair.

This years fair promises to be bigger and better and with planning already underway we've got some awesome games, stalls and fun planned. However there is always room for more, so if you have any suggestions or ideas to add to the event please reach out to us, we'd love you to get involved in the planning! With that said...



**HAVE YOUR SAY... JOIN OUR PTA SUGGESTIONS ZOOM CALL AT 8PM ON TUESDAY 30TH APRIL. WE WOULD LOVE TO HEAR YOUR FEEDBACK AND IDEAS PLEASE JUMP ON THE CALL TO LET US KNOW YOUR THOUGHTS**  
**CLICK HERE TO JOIN THE CALL**

(Meeting ID: 736 3797 0799 Passcode: 2Cmqr8)



**The Summer Fair is coming!**  
**Save the Date**  
**Friday 28th June 2024**



### UNIFORM SALE

Another great uniform sale this week raising £158.44

Thank you to the lovely helpers and all your donations



### RACE NIGHT

Get your event & horse tickets for a night at the races on Friday 17th May.

This is another joint event with the infant school so is sold from the Infant PTA Events - [pta-events.co.uk/wfispta](http://pta-events.co.uk/wfispta)



**GET IN TOUCH: Got an idea or want to get involved? Drop us a line**

✉ [wfjspta@gmail.com](mailto:wfjspta@gmail.com)  [facebook.com/groups/wfjisp](https://facebook.com/groups/wfjisp)

 **Wallace Fields Infant and Junior School Circus event 25th April 2024 - SOLD OUT!** 



### **Tickets have now sold out for the PTA Circus**

The circus itself starts at 5.00pm and lasts for 2 hours. There will be a 30 minute interval. The show theme this year is 'Dream' and consists of plenty of razzle dazzle, International artists from around the world performing magic, illusions, lots of fun clowning, music, comedy, song, and aerialists, with lots of audience participation.

From 3.30pm there is a BBQ available alongside a bar as well as face painting and a chance to purchase circus games and tricks as well as clown noses!

### **Children's Safety**

The safety of the children is solely the parents' responsibility. There will be a Lost Children meeting point on the field.

### **How to get there**

Entrance will be via the Infant school gate ONLY. There will be NO parking in either school and if you are driving please park considerately & not across residents' driveways. School gates will close at 4.55 and will not be opened until the end of the show, for security. Please ensure you arrive at the infant school before then if you are watching the show.

### **Pushchairs**

Due to fire regulations, pushchairs and prams are not allowed in the Big Top. There will be a specially designated area outside the tent for you to park them.

### **Toilets and First Aid**

There will be toilets open in both the Reception and Nursery block, clearly signposted. The sun is not going down until approximately 8pm and there is a First Aid company on site throughout the event.

### **End of the Event/Evacuation**

At the end of the night OR in the unlikely event that we need to vacate the field during the evening the Infant school gates will be opened for you to exit in the same way you entered. Please remember to respect our neighbours as you leave.



## Race Night is back! Coming to the Junior School on Friday 17th May 2024

Race Night is a highlight in the PTA calendar. Get your entry and horse tickets by clicking here <https://www.pta-events.co.uk/wfispta/> This is another joint event with the infant school so is sold from the Infant PTA Events.

Wallace Fields Infant School & Nursery and Wallace Fields Junior School Present

# RACE Night

PLACE YOUR BETS, SADDLE UP AND ENTER THE OWNERS ENCLOSURE FOR YOUR NIGHT AT THE RACES!

**FRIDAY 17TH MAY 2024**

**DOORS 7:30PM**

**Wallace Fields Junior School**

**Tickets £17 including Pizza supper**

Become a horse owner for an extra £3. Name your horse for the race card and enter the owners enclosure when your race is up for a chance to win a prize!

[pta-events.co.uk/wfispta](https://www.pta-events.co.uk/wfispta)

Sponsors: dentons catering equipment, Jade Green Flowers, HANDY TEAM, The PERSONAL Agent, HOBLEDOWN, HIGGINS AQUATICS, WALDEN GOLF CLUB

## Having a Spring Clean?

Did you have a spring clean over Easter.? Keep any school uniform with logos to bring into School Office for the next PTA second hand uniform sale and any other items please keep for the next **Happy Bag donation on 11th June 2024** which will help raise money for the school. The Happy bags will be sent home with the children nearer the time.



## YEAR 3

### Year 3 Stonehenge Homework

A huge well done to all our Year 3s who created fantastic Stonehenge homework projects. We were blown away by the effort the children had made to create some master pieces along with great written information too! All projects are now on display in the hall for the other children in school to have a look at. Thank you to parents and carers for all your support.

<http://twitter.com/statuses/1780609399947509785>

<http://twitter.com/statuses/1780610177550467496>

<http://twitter.com/statuses/1780610733312499989>

### Year 3 Music Assembly - Tuesday 30th April 1.15pm

The purpose of this assembly is to give musicians who learn instruments outside school or who are strong singers, the chance to perform and be celebrated in school. There is often lots of enthusiasm to take part which is wonderful, and I give every child who wants to, the chance to perform to their peers during their Music lesson the week before the assembly.

As I am sure you will appreciate, it is not always possible to select absolutely everyone for the Assembly performance as there is only half an hour available. I will be selecting performers who have a certain level of proficiency and who have a well-rehearsed piece. I don't want this to deter pupils who are fairly new to their instruments but I will explain to them that they need a bit more time before they are ready for a big public performance. Likewise with the singers, it will be more than likely that almost all will just perform in class.

There are many children with tuneful voices but the assembly performances are really intended to showcase those who have taken music to the next level (i.e.. have singing lessons and therefore have slightly more developed singing voices than most). Having said that, if your child is keen to sing to the class, please do encourage them and let them sing to you at home to practise. It takes a lot of nerve to sing solo in public!

If your child would like to take part in the music assembly or just perform to the class, I will be hearing performances during the **Year 3 music lessons on Monday 22nd April 2024**. Please ensure your child brings their instrument and music on this day ready to perform. **Parents of children selected to perform in the assembly will then receive an email inviting you to attend the performance at 1.15pm on Tuesday 30th April 2024.**


- Mrs Johnstone (Music Lead)

## YEAR 4

### Year 4 Music Assembly 23rd April 2024

Well done to all those who auditioned on Wednesday 17th April 2024 to take part in the Year 4 Music Assembly. The Music assembly will take place next Tuesday (23rd April 2024) they will need to bring their music/instruments in to school. Mrs Johnstone has emailed parents of all the Year 4 children selected to perform and we hope that parents will be available to attend. The concert will be from 1.15pm to approximately 1.45pm.

## YEAR 5



**WCGS PTFA**  
Wallington County Grammar School  
Parents, Teachers & Friends Association

Would you like your son or daughter to gain EXPERIENCE of sitting the 11+ exam under full test conditions?

**During Spring and Summer, the PTFA at Wallington County Grammar School will be running a series of Familiarisation Tests to prepare current Year 5 students for what to expect on the day of an 11+ entrance exam**

Choice of **TWO** sets of test papers in English & Maths with morning or afternoon sessions

**11+**  
FAMILIARISATION TESTS

**VISIT OUR WEBSITE TO BOOK**  
[www.wcgs-sutton.co.uk/Familiarisation-Tests](http://www.wcgs-sutton.co.uk/Familiarisation-Tests)

**VENUE: Wallington County Grammar School, Croydon Road, Wallington SM6 7PH**

## Year 5 Dance Festival Auditions

The competition was very tough at the dance auditions before Easter with 22 talented children contending for only 12 spaces. The following children were selected: **Isla H, Aurelia K, Amelia L, Heid L, Cara NL, Celine P, Hannah R, Tiffany S, Maia S, Alexandra S, Ela Ucuncu, and Clarissa W.** These children's parents /carers have been contacted and asked to complete a Google form to confirm they are able to attend. There is also a small selection of children who have been placed on the waiting list and parents have been contacted.

The selected dancers will need to attend rehearsals which will take place **every Friday lunchtime 12.30-1.00pm in the Hall, starting on Friday 19th April.**

The Dance Festival show will be on the evenings of **Tuesday 18th and Wednesday 19th June 2024** at the Epsom Playhouse. There will also be an **“all-day” rehearsal on Monday 17th June 2024.**

I am sure that you will want to come along and watch the show; tickets will be available to purchase from the theatre box office and online at [www.epsomplayhouse.co.uk](http://www.epsomplayhouse.co.uk)<sup>3</sup> from Tuesday 1st May 2024 at a cost of £7.00 each. They sell out very, very quickly so please don't delay as many less-organised parents have been disappointed in the past.

The performance will be filmed and DVDs will be on sale for parents to purchase after the event. Only first names will be used in the programme and the DVD. All information will be given to you by Lauren via email. If you have any questions, please contact her at [leidancecompany@gmail.com](mailto:leidancecompany@gmail.com)<sup>4</sup>

## Swimming

The chosen Year 5 and Year 6 children continue swimming on Monday mornings.

Parents/carers have been contacted if their child has been selected to continue the swimming programme in the summer term to embed their skills and ensure they are competent and safe in water. **Lessons continue on Monday mornings from 15th April** at Epsom College. Due to bank holidays, school events and availability of swimming instructors, the lessons are on the following dates: **22nd April and 29th April, 20th May, 10th June, 17th June and 24th June 2024.**

## YEAR 6

### Bikeability - Deadline Extended until 24th April. Only 5 Spaces Left

Each child in Year 6 is given the opportunity to sign up take part in the Bikeability Training Scheme run by Surrey County Council during the school day during either week commencing **3rd June 2024 or 1st July 2024.** The Level 2 qualification teaches cycling on roads with moderate traffic.

We have 55 children so far signed up from Year 6 to take part. There are 5 spaces left. The deadline has been extended to 9am on Wednesday 24th April 2024 and the link re-opened so you can still sign up and pay by clicking on the link below. There is a charge of £15.00 per child for the training. Children who are eligible for Free School Meals (FSM) should pay a reduced fee of £4.

[https://surreycycletraining.online/public/school\\_training/110962/](https://surreycycletraining.online/public/school_training/110962/)

---

<sup>3</sup><https://www.epsomplayhouse.co.uk>

<sup>4</sup><mailto:leidancecompany@gmail.com>

Children taking part should already be able to cycle and have good control and balance on their bicycle. Children taking part must have a road worthy bicycle and helmet.

### **Year 6 Hoodies**

Mrs Dave is kindly co-ordinating the Year 6 leavers' hoodies. Click on the link below and choose the colour, size (£2.50 charge added for adult sizes) and whether for an additional cost you would like your child's initials on the front. Basic price is £18.99.

<https://www.hoodiehut.co.uk/leavers-hoodies/wallace-fields-junior-school-2024/>

**The online shop is open until 10pm on 24th April 2024.** The hoodies will be delivered and distributed at school around 14th June 2024.

### **Year 6 French Residential Trip - Monday 15th July – Friday 19th July 2024**

#### **Passports:**

All children are required to use their own passport for the French Trip. If you need to apply for a passport, please do so in plenty of time. Please note current UK passports must be at the time of travel: Less than 10 years old and valid for at least 3 months after the day we leave France. You will need to send in your child's passport to the school office by 6th June 2024.

#### **What happens if my child holds a non-EU or a non-UK passport?**

If your child is a national of a third country listed in Annex 1 but resides in a country in Annex 2 (UK), then they are visa exempt for the purposes of a school trip. The school is then required to provide a covering letter for these children and no visa is required. We do ask that parents with children with a non EU/UK passport, read the previous letter sent and confirm their child's passport is from an Annex 1 country.

#### **Does my child need a EHIC or GHIC HEALTH CARE CARD for visitors to EU countries?**

All children will require either a valid in-date European Health Insurance Card (EHIC) or a Global Health Insurance Card (GHIC). If your child's EHIC is out of date then you should apply for a GHIC (Global Health Insurance Card). You may apply for a GHIC up to 6 months before your EHIC expires. Applying for a GHIC is free of charge on the NHS website. Beware of unofficial websites that charge you a fee to apply. Please ensure you apply for this in plenty of time. EHICS/GHICS need to be handed into the school office by 6th June 2024.

#### **Will my child need pocket money?**

€20 pocket money (in small notes) needs to be provided by parents to be handed in a named purse to the school office after Easter but by Tuesday 10th June. We will remind you about pocket money again after Easter.

#### **When is money due?**

Money is due for the French residential trip on the following dates:

- 3rd instalment of £120 due by 25th March 2024
- 4th instalment of £120 due by 10th June 2024

## CURRICULUM AND LEARNING

### French Homework

The optional French Linguascope practice for this week is as follows:

Year 3: Linguascope Elementary/Semaine (days of the week)

Year 4: Linguascope Beginner/Les bases/Les couleurs (colours for our Cameleon poem)

Year 5: Linguascope Beginner/Mon environnement/En ville (places in a town)

Year 6: Linguascope Beginner/L'Alimentation/les snacks

## CLUBS

### Club Start Dates

Please always make a note in your diary of club start and finish dates as they do not always start and finish at the same time. Clubs often do not occur in the last and first week of term but please do double check your club letter.

To help please find the start dates for this Summer term listed below.

Clubs start dates

- Monday 15th April - Tennis, Arts & crafts
- Tuesday 16th April - Gardening, Lego
- Thursday 18th April - Theatre Arts
- Friday 19th April - Theatre Arts
- Friday 19th April 2024 - British Sign language (BSL)
- Monday 22nd April - Cricket, Code Camp
- Tuesday 23rd April - Judo, Book Club, French, Hip hop, Cooking, Athletics, Science Club
- Wednesday 24th April - judo, Code Camp, Book, Basketball
- Friday 26th April - Dodgeball
- Thursday 2nd May - Spanish, Science Club

Some clubs still have some spaces including Cookery, Judo, Girls Football, Tennis, Spanish, Science, and Code Camp. I have attached their club letters.

## Still spaces in the following clubs

**Cooking Club Summer 2024**  
*'It's a Rainbow!'*  
 Lots of Colourful baking!  
*Rainbow salads, rainbow shortbread, rainbow rice wraps...*

Wallace Fields Junior School  
 Tuesday after school until 4.30pm  
 23rd April-9th July  
 Half term 27th May  
 11 sessions at £10.50

Booking via our website [www.growcookenjoy.co.uk](http://www.growcookenjoy.co.uk)  
 or  
<https://bookwhen.com/growcookenjoy/e/ev-sdff-20240423153000>

grow · cook · enjoy



### Wallace Fields Junior School Tennis Club

If you'd like to book, please fill in the below form and send to [enquiries@tennisbull.co.uk](mailto:enquiries@tennisbull.co.uk)  
 Min. of 8 children to run a session. Ratio is 20:1 with an assistant coach if needed.

Half-Term Monday 27<sup>th</sup> May to Friday 31<sup>st</sup> May

DAY	DATES	TIME	AGE	COST
Monday	15 <sup>th</sup> April – 8 <sup>th</sup> July (NO CLUB 29 <sup>th</sup> May) (BANK HOLS 6 <sup>th</sup> May)	7.45am – 8.40am	Year 3/4/5/6	£105 (10 weeks)

Player Name: \_\_\_\_\_ School Year: \_\_\_\_

Tel No: \_\_\_\_\_ (Day) Tel No: \_\_\_\_\_ (Emergency)

Medical Conditions: \_\_\_\_\_ Medication: \_\_\_\_\_

Contact Name: \_\_\_\_\_ Email: \_\_\_\_\_

**End of Term Prizes** – All Competitors will receive a TennisBull certificate on completion of the 10-week term to reward their perseverance, hard work and dedication.

**Weather** – Sessions will move to a classroom (if available) where tennis relative activities (wordsearches, fun quizzes, games etc) or School Hall (if available). **Tennis club will not be cancelled due to weather.** Please wear appropriate clothing e.g. jumper, tracksuit bottoms, woolly hats and gloves in winter, shorts, hats and water in summer.

**Parent/Guardian Declaration:** I have read and understood this form, completed all the details to the best of my knowledge and will ensure that I comply with the information set out. By signing the below, I **DO** give permission for any photographs/video footage taken of my child/ren during the course to be used on social media or for TennisBull promotional/marketing purposes.

If you have any questions, please do not hesitate to email Alex Bull at [enquiries@tennisbull.co.uk](mailto:enquiries@tennisbull.co.uk) or 07984717251

Signature of Parent/Guardian: \_\_\_\_\_ Date: \_\_\_\_\_





## Girl's Football Training

### Year 3 & 4

Coach Mr Dowdeswell runs a free girl's football session on Thursday lunchtimes.

If your daughter would like to attend or wishes to try a session, please sign up by completing the Google form. <https://forms.gle/2pbW3u3WTKgkaArJ7>

Please ensure she brings in PE kit and trainers (shin pads and football boots are ideal but not essential).

Children will need to go in for early lunch.

## Spanish club – summer 2024

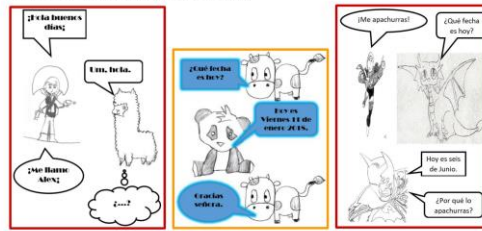


Dear Parents/Carers,

As one of the three most widely spoken languages in the world and considered by the British Council as the most important foreign language to learn, Spanish will always be a great asset for your child.

Your child will have fun learning Spanish and Google Slides while creating their own comic; they can do their own drawings or use the ones done by other club members.

Here are some comics created in previous years:



With all the events planned for this term, Spanish Club will run for 7 weeks, starting on May 2<sup>nd</sup> and finishing on June 27<sup>th</sup>. It will take place on **Thursday at lunchtime** in the **Computing Suite**. There will be no lesson on May 9<sup>th</sup>.

12.10 – 12.40 (Year 5 and Year 6) – 12.40 – 13.10 (Year 3 and Year 4)

To book a place for your child, please send payment and details by Monday April 29<sup>th</sup>.

On-line payment to L. Hernandez Ortiz,  
account number: 13617521  
sort code: 20-29-90  
ref: WFJS + your child's class and surname  
Amount to pay: £35.00

Please let me know if you have any problem with on-line payment.

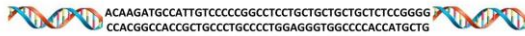
E-mail:  
• their name  
• class  
• medical conditions, dietary restrictions and/or allergies  
• your name  
• your emergency contact number

**NOTE:** If your child has previously joined the club, please e-mail their name and class only, unless any other details have changed.

Yours sincerely,

Lorena Hernández  
spanish.science@pobroadband.co.uk





## Year 4 Science Club – summer 2024

Dear Parents/Carers of Year 4 children,

*"Nothing in life is to be feared, it is only to be understood.  
Now is the time to understand more,  
so that we may fear less"*

**Marie Curie** – the only person who has won a Nobel Prize in two different sciences.

With residential and day trips planned for Year 4 this term, Science Club will run for 7 weeks, starting on April 23<sup>rd</sup> and finishing on June 25<sup>th</sup>. It will take place on **Tuesday** at **lunchtime** in the **Computing Suite** from **12.40 to 13.10**. Please ensure your children have a raincoat for the outdoor/messy experiments. All the resources needed for the experiments are included.

To book a place for your child, please send payment and email their details by Thursday April 18<sup>th</sup>.

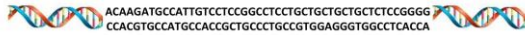
On-line payment to L Hernandez Ortiz  
account number: 13617521  
sort code: 20-29-90  
ref: WFJS + your child's class and surname  
amount to pay: £49.00  
  
Please let me know if you have any problem with on-line payment.

E-mail:  
• their name  
• class  
• medical conditions, dietary restrictions and/or allergies  
• if photos and videos can/cannot be taken – to be shown only at WFJS  
• your name  
• your emergency contact number

**NOTE:** If your child has previously joined the club, please e-mail their name and class only, unless any other details have changed.

Yours sincerely,

Lorena Hernández  
spanish.science@pobroadband.co.uk



## Year 6 Science Club – summer 2024

Dear Parents/Carers of Year 6 children,

*"Nothing in life is to be feared, it is only to be understood.  
Now is the time to understand more,  
so that we may fear less"*

**Marie Curie** – the only person who has won a Nobel Prize in two different sciences.

With all the events planned for this term, Science Club will run for 7 weeks, starting on May 2<sup>nd</sup> and finishing on June 27<sup>th</sup>. It will take place on **Thursday after school** in the **Computing Suite** from **3:30pm to 4:30pm**. There will be no lesson on May 9<sup>th</sup>.

As every summer, we will go on a **meteorite** hunt and the weather will not stop us! Please ensure your children have a raincoat. The experiments this term will be more advanced, please speak with your children as they will need to follow all instructions thoroughly or will not be able to take part.

To book a place for your child, please send payment and email their details by Monday April 29<sup>th</sup>.

On-line payment to L Hernandez Ortiz  
account number: 13617521  
sort code: 20-29-90  
ref: WFJS + your child's class and surname  
amount to pay: £70.00  
  
Please let me know if you have any problem with on-line payment.

E-mail:  
• their name  
• class  
• medical conditions, dietary restrictions and/or allergies  
• if they can/cannot walk home alone  
• if photos and videos can/cannot be taken – to be shown only at WFJS  
• your name  
• your emergency contact number

**NOTE:** If your child has previously joined the club, please e-mail their name and class only, unless any other details have changed.

Yours sincerely,

Lorena Hernández  
spanish.science@pobroadband.co.uk

## GUILDFORD JUDO CLUB @ Wallacefields

Judo is based on the ancient art of Ju-Jitsu and focusses on self-defence techniques to counter strength and size with leverage, balance and a knowledge of anatomy.

Judo is a sport for children of all sizes and abilities, helping to improve fitness, coordination and confidence. Pupils will have the opportunity to be graded and enter competitions, however are very welcome to take part in lessons just to train, learn some self-defence and socialise.

The Tuesday 8am session is for years 5&6 and Wednesdays at 8am is for years 3&4. The cost for the Summer term is £81 and will start on the 23<sup>rd</sup>/24<sup>th</sup> April and the last session will be the 2<sup>nd</sup>/3<sup>rd</sup> July, 10 sessions in total.

If you would like your child to attend Judo Classes or have any questions please contact me via the details below.

My contact details are:  
Dave Kennedy  
07941 603 022  
dave@guildfordjudo.co.uk



Wallace Fields Junior  
School  
Summer 2024

## Get creative after school! Returning to your school next term



Brand new  
content!

Coding  
Years 3 - 6

Calling all budding game designers! Our highly-rated Coding after-school club allows older children to create and publish their own unique games using our custom platform, Code Camp World. We have made Code Camp World as accessible as possible, meaning that children can focus on the fun aspects of coding whilst developing problem-solving and creativity skills.

**Book today - limited spaces available!**

Mon Y3 & Y4: <https://my.codecamp.co.uk/course/941>

Wed Y5 & Y6: <https://my.codecamp.co.uk/course/942>

hello@codecamp.co.uk  
www.codecamp.co.uk

★★★★★  
4.9 stars on reviews.io



## Sign Up for Excellent Wrap Around Care - JAG!



**Junior Adventures Group**

# Action-Packed Breakfast & After School Clubs

SUPER SPORTS • POWER TEAMS • GLOBAL KIDS  
CREATIVE INVENTORS • BRAIN BOOSTERS • ZEN MASTERS

*Fun packed multi-activity clubs for every child!*

- ✓ A BIG DOSE OF FUN BEYOND THE SCHOOL DAY
- ✓ MAKE NEW FRIENDS ACROSS ALL AGE GROUPS
- ✓ DELIVERED BY A TEAM OF EXPERTLY TRAINED PROFESSIONALS
- ✓ KEEP ACTIVE AND IMPROVE WELLBEING
- ✓ EXPLORE CREATIVITY AND A RANGE OF INTERESTS
- ✓ HEALTHY BREAKFAST & NUTRITIOUS AFTER SCHOOL SNACK AVAILABLE EACH DAY

**SCAN HERE TO FIND OUT MORE & BOOK NOW!**



0333 577 1533  
junioradventuresgroup.co.uk

Ofsted Registered



**Junior Adventures Group**

# Holiday Clubs

## FREE DAY PASS!

**SCAN HERE TO FIND OUT MORE & BOOK NOW!**



Book online using promotional code **FREE DAY PASS**. Only one offer or discount code can be used per booking. Each voucher code can only be used once per customer & valid on only holiday club bookings.

**What to expect at a JAG Holiday Club?**

- ✓ Something for every child, with a wide range of fun-filled activities
- ✓ All activities delivered by expert play leaders in a safe, fun environment
- ✓ Confidence-building by learning new skills and trying new things under expert guidance
- ✓ Positive interactions that nurture friendship and social awareness
- ✓ Enhanced wellbeing through a focus on happiness, mindfulness, kindness and being active

f @junioradventuresgroupuk junioradventuresgroup.co.uk 0333 577 1533

Ofsted Registered

# Wellbeing and Safeguarding

## Online Safety

This half term's online safety theme is Online Wellbeing. This theme has been shared with all children in whole school assembly on Monday, discussing how the internet can support wellbeing and also areas children should be aware of. Children will also be taking part in a lesson with their teachers to highlight this half term's theme.

If you would like to support your children at home with online safety surrounding their wellbeing, the National Online Safety (NOS) site has lots of useful information.

If you want to join our National Online Safety platform for free, please follow <https://nationalcollege.com/enrol/wallace-fields-junior-school>

**What Parents & Educators Need to Know about TOWNSHIP**

Despite launching in 2021, Township remains popular with children and adults alike. A city-building game with farming elements, it tasks players with developing their settlement and unlocking new features along the way. Ahead of the more casual games, it's mostly child-friendly – but there are still some related risks to be mindful of.

**4+**

**WHAT ARE THE RISKS?**

- MISLEADING PUBLICITY**  
Township's developers have previously been criticised for misleading publicity. The game's early marketing materials suggested it was a simple, casual game, but it's actually a more complex, strategic game. This can lead to disappointment for young players who expect a more straightforward experience.
- TIME-CONSUMING GAMEPLAY**  
Township is a game that can be very time-consuming. It's a city-building game that involves a lot of planning and resource management. This can lead to children spending a significant amount of time on the game, potentially impacting their schoolwork or other activities.
- IN-GAME ADVERTS**  
Township features in-game advertisements for various products, including clothing and accessories. These ads can be targeted to children, potentially leading to unwanted purchases or exposure to inappropriate content.
- IN-GAME PURCHASES**  
Township offers in-game purchases for various items, including virtual currency and power-ups. These purchases can be addictive and lead to excessive spending, especially if children are given access to the game's store.
- ONLINE MULTIPLAYER MODE**  
Township has an online multiplayer mode that allows players to interact with each other. This can be a social experience, but it also opens up the possibility of encountering inappropriate behavior or cyberbullying from other players.

**Advice for Parents & Educators**

- DISCUSS THE GAME IN ADVANCE**  
While older children may enjoy and understand that Township might be marketed as a generally innocuous game, it's important to discuss the game's features and potential risks in advance. This will help them understand the game's complexity and avoid any potential disappointment if they don't like the game.
- MONITOR SPENDING AND SCREEN TIME**  
Township is a game that can be very addictive. It's important to monitor children's spending and screen time to ensure they are not spending too much money or spending too much time on the game.
- BE WARY OF EXTERNAL SITES**  
Township has a large online community. Parents and educators should be aware of the risks associated with external sites, such as chat rooms and forums. These sites can be used to spread misinformation or engage in inappropriate behavior.
- TALK ABOUT ONLINE STRANGERS**  
Township's online multiplayer mode allows players to interact with each other. Parents and educators should talk to children about the risks of interacting with online strangers, including the possibility of encountering inappropriate behavior or cyberbullying.

**Meet Our Expert**

Editor in Chief of gaming and esports site Oldbear, Jorge Coimbra has worked in the games industry for over 10 years. A regular visitor to the site, he's written many articles about the game. He's also a parent and has published many articles about the game's risks to children.

**Wake Up Wednesday**

**The National College**

@waka\_up\_weds | /www.thenationalcollege | @waka.up.wednesday | @waka.up.weds

Views of this guide do so at their own discretion. No liability is entered into. Current as of the date of release: 03.04.2024

At The National College, our [WakeUpWednesday](#) guides empower and equip parents, carers and educators with the confidence and practical skills to be able to have informed and age-appropriate conversations with children about online safety, mental health and wellbeing, and (where relevant) Remote Learning. Remotely delivered by National Online Safety, these guides cover relevant wider topics and themes. For further guides, hints and tips, please visit [nationalcollege.com](http://nationalcollege.com).

# What Parents & Educators Need to Know about ENERGY DRINKS

Energy drinks are highly caffeinated beverages often consumed for a quick energy boost. However, excessive intake can lead to health risks like increased heart rate and sleep disturbances. Statistics underline these products' popularity among young people – many of whom consume them regularly. Here's our expert's advice on addressing the concerns surrounding energy drink consumption in adolescents.

## WHAT ARE THE RISKS?

### HIGH CAFFEINE CONTENT

Most energy drinks contain high levels of caffeine, often much more than a typical cup of coffee. In fact, some energy drinks contain as much caffeine as a cup of coffee. Excessive caffeine intake can lead to increased heart rate, high blood pressure, anxiety, insomnia, digestive issues and – in extreme cases – even more severe conditions for children and adolescents, whose bodies are still developing. Excessive caffeine intake can be particularly harmful.

### INCREASED RISK OF HEART PROBLEMS

The combination of high caffeine levels and other ingredients found in energy drinks can put extra strain on the cardiovascular system. Research has shown that excessive caffeine, stimulants, and increased heart rate can lead to heart attacks, especially in individuals with pre-existing heart conditions.

### IMPACT ON MENTAL HEALTH

The significant levels of caffeine and sugar in energy drinks can exacerbate anxiety, depression and even – in severe cases – contribute to panic attacks. Excessive caffeine intake can also lead to increased heart rate and blood pressure, which may further exacerbate mental health issues.

### DISRUPTED SLEEP PATTERNS

Consuming energy drinks, especially during the afternoon or evening, can interfere with normal sleep patterns. The stimulating effects of caffeine can make it difficult to fall asleep and young adults to feel tired – leading to exhaustion and other associated health risks, including impaired cognitive function, mood disturbances and decreased academic performance.

### LINKS TO SUBSTANCE ABUSE

Some research has suggested a correlation between energy drink consumption and higher rates of alcohol and drug use among young adults. Heavy drinking and use of recreational drugs, including marijuana, may counteract the stimulant effects of caffeine. This combination, however, can be dangerous and increase the risk of accidents, injuries and alcohol poisoning.

### POTENTIAL FOR DEPENDENCY

Frequent consumption of energy drinks can lead to tolerance – meaning that individuals may need to consume increasing amounts to continue achieving the desired effects. This can potentially lead to dependency and addiction, especially in younger individuals who may be more vulnerable to addictive behaviours.

## Advice for Parents & Educators

### LIMIT CONSUMPTION

It's vital to educate young people about the potential risks related to energy drinks, emphasising the consequences of excessive caffeine consumption. Encourage healthier alternatives like water, herbal tea or natural fruit juices. You can model healthy behaviours by restricting your own consumption of energy drinks and encouraging a supportive environment for balanced choices.

### PROMOTE HEALTHIER HABITS

Parents can help with this issue by including discussions about the possible dangers of energy drink consumption into their health education curriculum. Encourage children and young adults to critically evaluate the marketing messages they see and make informed choices about their health. Teachers could also provide resources and support for children to identify healthier alternatives.

### ADVOCATE FOR REGULATION

If this is something you're particularly passionate about, you could work with local health organisations and policymakers to advocate for regulations on energy drink sales to children and young people. Raise awareness among parents, educators and community members about the potential health risks associated with energy drinks and support initiatives promoting healthier options in schools and communities.

### SET A POSITIVE EXAMPLE

Adults can model healthy behaviours by visibly choosing alternative beverages instead of energy drinks. Highlighting responsible consumption, such as limiting intake to occasional occasions, can help young people understand the importance of moderation. Encourage hydration and sufficient sleep for overall wellbeing and academic success.

### Meet Our Expert

Dr Jason O'Sourke, Headteacher of Washington Academy, champions food education and encourages all pupils to eat healthily. He is the National Association of Schoolmasters' Union of Great Britain's (NASUWT) National Food Education and Wellbeing Champion. Jason has spoken about food education at National Online Safety's annual conference. A member of the All-Party Parliamentary Group on School Food, he co-founded 'Teatalk', a primary food education charity.



Source: See full report at [nationalcollege.com/publications/energy-drinks](http://nationalcollege.com/publications/energy-drinks)

@wake\_up\_weds /www.thenationalcollege @wake.up.wednesday @wake.up.weds  
Users of this guide do so at their own discretion. No liability is entered into. Current as of the date of release: 17.04.2024

## REMINDERS

### Update from Twelve 15

## INTRODUCING OUR NEW SPRING/SUMMER MENU

**80% OF OUR MENU IS MADE FROM SCRATCH USING FRESH INGREDIENTS**



All our menus adhere to the Government Food Standards and are developed with little ones in mind. We have over 70 years experience in providing school meals.

Our meat is Red Tractor approved and our fish carries the MSC accreditation.

Our Primary school kitchens are nut free. We have a range of Special Diet menus and cater for the 14 key allergens identified by the Food Standards Agency.

We reduce salt and sugar whenever possible in our recipes, for example our sponge puddings contain 50% fruit - the natural sugars replace some refined sugar.

**Click [here](#) to find out more about Twelve15 school meals (including special diets) and see our range of menus.**



**We like to make our meals as nutritionally dense as possible.**

#### **For example on our new menu:**

- we add carrots and courgette to our homemade tomato sauce.
- our lasagne beef has added vegetables.
- our chicken goujons have 'hidden' cauliflower.
- our chicken meatballs contain sweetcorn and are topped with our homemade tomato sauce.
- our Caribbean Quorn fajitas are a great source of protein, fibre, calcium, folic acid, Vitamin B plus vitamin rich peppers and onions.
- our roasted vegetable parcel is filled with fresh vegetables and a selection of beans wrapped in a light flaky pastry, served alongside our signature tomato sauce.

**Not signed-up yet for school meals which are FREE for Reception, Year 1 and Year 2 pupils? Please speak to your School Office.**



## Summer Uniforms

Until October half term, pupils can wear the summer uniform which includes the gingham red and white check dress and the school polo shirt with school logo. The school tie is worn with a shirt only and not with the polo shirt or the chequered dress. Please no fashion shoes or sandals and plain grey or white socks.

## Sports Kit Amnesty - Do you have any kit at home?

If you have not done so already, please return any school sports team kits to the school office. Netball, football and rugby squads have now finished for the summer.

## ACHIEVEMENTS

### Violinist Performs at Richmond Arts Festival

Congratulations to Yoon S won **first place** in the Violin Performance (Youth Beginner) category at Richmond upon Thames Performing Arts Festival 2024 held on March 23rd 2024.



## COMMUNITY NEWS

### Road Closure Near Wallace Fields Junior School

All local residents have been informed that due to emergency gas mains replacement works there will be road closures on College Road, Longdown Lane North and Longdown Lane South from **Friday 29th March 2024 for 23 days**. If you are driving from or to school please make sure you leave extra time to amend your route around the diversion. As both Longdown Lanes will be closed, all traffic will be coming up and down Windmill Lane from Epsom Road so please be patient and leave extra time. Please avoid driving up on to the pavement, or parking on verges, as this is very dangerous for all those walking to and from school.

## M25 Weekend Closure

Advance warning of part-closure of M25. Junctions 9 to 10 of the M25 will be closed both ways **9pm Friday 10 May to 6am Monday 13th May 2024**. Diversions will be in place but heavy congestion and long delays are expected in and around the area. Please only travel if your journey is essential, or choose another form of transport for your journey. Follow our channels to stay up to date with the upcoming M25 closures this year. Latest at: [▶ https://nationalhighways.co.uk/our-roads/south-east/m25-junction-10/](https://nationalhighways.co.uk/our-roads/south-east/m25-junction-10/)



**M25 Weekend Closure**  
**Friday 10 to Monday 13**  
**May 2024**  
**Junctions 9 to 10 both ways**  
Only travel if necessary.  
Expect long delays. Diversions in place. 

## Free Boiler Upgrade



Epsom & Ewell  
Borough Council is  
working with Action Surrey  
to deliver **FREE boilers**  
to those most in need.

100%  
grant  
funded

You could be eligible for a free boiler if you:

- ✓ Are a resident in Epsom and Ewell
- ✓ Are the owner occupier of a property with a gas boiler
- ✓ Are on means-tested benefits or low income
- ✓ Live in a property with an EPC rating of D – G, and
- ✓ Have a broken or end of life boiler over ten years old

Find out more and apply  
at [www.actionsurrey.org](http://www.actionsurrey.org)  
or call 0800 783 2503





## Bourne Hall Museum



The Iron Age the end of prehistory

May 11 1pm to 2.30pm

The Iron Age lasted from 800 BC to the Roman invasion. The use of iron changed the life of folk with other advances like the potter's wheel, the lathe for woodworking, and the rotary quern for grinding grain. The population grew substantially till it exceeded one million, due to the introduction of improved varieties of barley and wheat, and increased farming of peas, beans, flax and other crops. Farming improved because the iron-tipped ploughshare made it possible to plough heavy clay soils. Meet some Iron Age folk and discover what it was like to live in a roundhouse.



£5 per child . Contact: David Brooks, Bourne Hall Museum, Spring Street, Ewell, Surrey, KT17 1UF Tel 020 8394 1734. Email [dbrooks@epsom-ewell.gov.uk](mailto:dbrooks@epsom-ewell.gov.uk)

## Local Sports

Looking to develop your Cricket skills? Or want to try a great new sport this summer?  
**Join your local club this 2024 season!**

<div style="text-align: center;"> <p><b>Mini Cricket</b> For Girls &amp; Boys aged 4-8</p> <p><b>Starts Wednesday 17th April 2024</b>            Two sessions available every Wednesday:            6.00pm – 6.45pm            6.45pm – 7.30pm</p> <p>Enjoy building Cricket skills through a fun and interactive coaching programme.            Run in partnership with award-winning Mini Crickets.</p> </div>	<div style="text-align: center;"> <p><b>Junior Cricket</b> For Girls &amp; Boys aged 9-16</p> <p><b>Starts Thursday 18th April 2024</b>            Every Thursday 6.30pm – 8pm</p> <p>Develop your Cricket skills through weekly qualified coach-led training sessions focusing on batting, bowling and fielding.            Build your confidence and teamwork skills in a friendly, inclusive environment.</p> </div>
--	---

For further information about Junior & Adult cricket please contact us:  
 27 Ruxley Lane, Ewell KT19 0JB : [info@ewellcricketclub.co.uk](mailto:info@ewellcricketclub.co.uk) : [www.ewellcricketclub.co.uk](http://www.ewellcricketclub.co.uk) : [@ewellcc](https://twitter.com/ewellcc)

**NEW MEMBERS ALWAYS WELCOME**

# Alexandra Open 2024



**When: Saturday 18th May & Sunday 19th May**

Where: Alexandra Recreation Ground tennis courts, Epsom, KT17 4BW

**Categories: Mixed U12s, Mixed U18s, Mixed Adult singles, Adult doubles (format and time to be finalised based on number of entries)**

Light refreshments for players and tournament volunteers / referees will be provided by Park View Café

Tournament organised and run by Callum Macarty

**Entry Fee: £15 per person for one category entered, £20 for 2 categories entered**

Register via email to [info@myparkviewcafe.com](mailto:info@myparkviewcafe.com) or in person at the Café. Registration closes on 10th May 2024 and **full payment is required at the time of registration to secure place**. Payment via bank transfer to Park View Cafe, A/C 22008858, S/C 10 00 01, account with the Café, Epsom, will be provided.



## Free activity sessions

**For 7-11 year olds  
Local to you, after Easter  
Sign-up from 1st March onwards**

**Book your place  
- scan the code**

[bit.ly/42KH8tR](https://bit.ly/42KH8tR)

- Join with friends!
- Dance, Girls Touch Rugby, Judo, Tennis, Boccia
- Friendly, supportive coaches
- Everyone's a beginner
- Make new mates local to you



*"It's fun, its free and there's loads and loads of activities you can do" - Lara*

*"We were blown away with the games and what was available" - Parent*



**Book now**

