



# Wallace Fields Junior School Newsletter



**Thursday 2nd July 2026**

**Last Few Weeks of Term**

- **Friday 3rd July 2026 - Celebration Summer Fair (new date)**
- **Monday 6th July 2026**

- **Year 3 - Roots and Shoots Workshop**
- **Wednesday 8th July** - Volunteer Thank you Tea Party 14:30-15:15
- **Friday 10th July**
  - Deadline Parents Questionnaire
  - Deadline to order Class Photos from Bentley Photographic
  - Year 6 Decade Day
  - Cricket Match v Cuddington Croft - Year 5 & 6 15:45 -16:45
  - **Year 4 Art - Shoeboxes needed**
- **Monday 13th July** - Year 5 & 6 D&T week
- **Tuesday 14th July** - Year 6 Production Dress Rehearsal (children only)
- **Wednesday 15th July** - Year 6 Production
- **Thursday 16th July**
  - Year 4 Painshill Residential Trip
  - Year 6 Production
- **Monday 20th July**
  - Year 6 Leavers' Disco **16.30 - 17:45**
  - Year 6 Shirt Signing
- **Tuesday 21st July**
  - Year 6 Leavers' Assembly **9:00-10:15**
  - Year 6 Shirt Signing Continues
  - All finish for summer at **13:30**

Click here<sup>1</sup> for School Calendar and to Subscribe to Calendar. Click Here<sup>2</sup> for School Term Dates and INSET days

Click Here<sup>3</sup> for Upcoming Events

## HEAD'S UPDATE

### Staying Open During the Heatwave

I would like to thank you all for the very positive feedback following last week's heatwave. Your emails and kind comments were genuinely appreciated, and that sense of gratitude means a great deal to us. Despite the high temperatures, we remained open throughout the week while some local schools chose to close. This was made possible by the careful approach taken by staff and the excellent attitude shown by the children.

We put a range of measures in place to keep everyone safe and comfortable. These included the use of air conditioning units where available, regular cold water breaks, enforced shade time, and reduced physical exertion. Lunchtime "sprinkler time" provided a welcome opportunity to cool down, and some lessons were moved outside into shaded areas.

I was particularly impressed with how sensible and cooperative the children were. They followed guidance carefully and adapted well, sitting quietly in the shade when directed and maintaining a calm and positive attitude throughout.

Looking ahead, we expect more warm weather next week and will continue with the same approach. While learning can be more difficult in the heat, maintaining routine is important. For this reason, optional collection is not something I support, particularly during the hottest part of the day, as it would be too disruptive. We have purchased more fans for classes that do not have them.

Thank you again, your support and gratitude is very much appreciated.

### Gives Us Your Views - Please Complete Your Parent Questionnaire

We have only had 25 responses so far to our parent questionnaire which simply does not represent the school community of parents or give us any reliable levels of data. We want your feedback and your creative ideas to help the school improve and grow.

Please complete the Google form by clicking here<sup>4</sup> below by **Friday 10th July 2026**. your views are very much appreciated and your positive input is needed to know **what is going well** - tell us what you think if your child is loving it at Wallace Fields Juniors. It should should take about ten minutes. Thank you.

---

<sup>1</sup><https://wallacefields-jun.surrey.sch.uk/calendar>

<sup>2</sup><https://wallacefields-jun.surrey.sch.uk/news/2025-03-18-inset-days-confirmed-for-next-academic-school-year>

<sup>3</sup><https://wallacefields-jun.surrey.sch.uk/events>

<sup>4</sup><https://forms.gle/SkoGaGhK1vqX1Tyn9>

## See You at the Summer Celebration Afternoon on Friday

Mrs Johnstone has been busy working with the children on some lovely singing performances, so I do hope you can come along on Friday 3rd July 2026 at 15:00. Below is the programme.



## Stars of the Week





Above is the photo of **Stars of the Week** for the last two Fridays 19th and 26th June 2026. The incorrect photo was published last week. The Stars of the Week create a superb role model for their fellow peers through their efforts and commitment by following the school values. Nominated each week in our Celebration Assembly every Friday. All of the Stars of the Week receive a certificate and 5 house points for showing one or more of the school BELIEVE values - Brilliance, Enthusiasm, Learning, Inspiration, Equality, Vision and Every pupil matters. Well done to this week's winners.

## THIS WEEK

### BLOG

## Wallace Weekly



Weekly highlights by George R and Eesa H.

It has been an extremely hot week and we are all nearly turning into slush! Kickstarting the week was a house assembly about Sports Day which is coming round the corner rapidly. Tuesday was an eventful day as it was Diversity Day, where everyone dresses up in their cultural clothing. We also had a music assembly. Taking us to the middle of the week was the sun safety assembly, where we learnt how to stay safe in the sun. Finally ending the week was a celebration assembly.

#### **Highlights:**

We interviewed members of the school to find out what their highlight of the week was.

Year 3: Ahsan: *The highlight of my week has been the sprinkler because I love having a cool down with my friends. It's a really memorable thing as we don't get this often.*

Robyn: *I really enjoyed P.E with Mr Sellars because we were doing gymnastics to help with our stretching instead of our Cricket.'*

Year 4: Matty: *'Today I completed my minibeast story in D&T and I'm very excited about doing my pop up story for D&T' Barnaby, 'I really enjoyed Diversity Day and you had to pick a country from the wheel of fortune and whatever the country, you had to have made a poster'.*

Year 5: Year 5 have been making posters about the afterlife in their F&P (Faith and Philosophy)

Year 6: Year 6 have been practising their production 'Grossbusters'.

**Celebration Evening:** Our annual school celebration evening is just right round the corner. This is where each year group sings their assigned song finally finishing off with a range of performances by members of the school.

## Sports Day

We enjoyed a fantastic Sports Day filled with energy, teamwork and laughter. The children took part in a range of relay races and team base-activities, showing great effort and spirit throughout. The mum and dad races were a real highlight and brought plenty of fun for everyone.

All teams performed superbly, with Red taking first place, Blue finishing 2nd, Green 3rd and Yellow 4th. Well done to all the children for their enthusiasm and excellent sportsmanship, and thank you to staff and families for making the day such a success.

Click here<sup>5</sup> to see some lovely photos from Sports Day.



**WALLACE FIELDS JUNIOR SCHOOL SPORTS DAY  
RESULT DETAILS**

	BLUE	GREEN	RED	YELLOW
Team Challenges	1899	1877	1956	1835
Races	320	258	305	278
Grand Totals	2219	2135	2261	2113
Overall Finishing Position	2nd	3rd	1st	4th

### Great Feedback from Pupil Voice on French Lessons

Pupils were asked to fill in a Pupil Voice Questionnaire for **French Lessons at Wallace Fields Junior School**: . An amazing 81% responded. The results were very encouraging!

The majority of children feel the current French lessons are pitched well. **Just over 60%** selected “*Just right*”, making it by far the dominant view. A smaller share found the lessons **slightly difficult 17%** or **easy 12%**, while **9%** felt they were *too easy*. Only 2% considered them *too difficult*.

Other input from Pupil feedback shows that French lessons are a real hit across the school! An impressive 72% of children described French as **fun**, with many also finding it **interesting** and **enjoyably challenging**, *stretching them without overwhelming them*.

When asked which activities they enjoy most, the clear favourites were **games**, **songs**, and **Linguascope**, while more than half of the pupils also enjoyed opportunities to **act** and perform in **French**.

---

<sup>5</sup><https://wallacefields-jun.surrey.sch.uk/news/2026-07-02-a-fantastic-sports-day>

Overall, the feedback paints a vibrant picture of French learning: pupils thrive when lessons are active, creative and playful and they are eager for even more of the activities that make language learning come alive.

### **You said it ... I'm doing it!**

For the academic year 2026-27, I will be adding **additional performance/acting opportunities** while maintaining those that have proved themselves year after year!

We will continue to play games, use Linguascope, sing songs and do outdoor learning when the weather permits. ***Merci beaucoup*** to all children who shared their views!

Madame Cornell, French/MFL Lead

## **PTA**

### **SUMMER CELEBRATION FAIR TOMORROW! VOLUNTEERS STILL NEEDED!**

We can't wait to see you for the Summer Celebration Fair tomorrow from 3pm. It promises to be a wonderful afternoon for the whole family to enjoy.

Sadly we are still very short of volunteers, so please consider if you could sign up for a slot to help. We cannot run these big events without your support. We are all volunteers ourselves with other commitments, children and busy lives and going forward we will have to re-consider if we continue to hold these big events as the stress of organising them without the volunteers coming forward is unfortunately taking its toll.

Do also consider whether your child would like to run a game? Lower school children may run a game with parental/carer supervision and Upper school children may run a game with a responsible adult nearby. Perhaps you have an older senior school child or other family member willing to lend a hand? Please sign up here: <https://www.pta-events.co.uk/wfjspta/index.cfm?event=event&eventId=118886>

If you have already signed up, we thank you from the bottom of our hearts! Many hands make light work!



### **CAN YOU BAKE FOR THE FAIR?**

We are asking for your lovely bakes and makes for us to serve on our snack stall. We welcome sweet and savoury options whether cakes, cookies or sausage rolls. Could you showcase something from your culture, such as samosas, baklava (nut free!) or pastel de nata? Please note the bakes MUST be free of nuts and sesame and please provide a full list of ingredients.

In light of the hot weather, a contribution of prepared fruit e.g. strawberries or watermelon would also be fantastic.

Please send your contributions into school with your child tomorrow morning. If your make requires refrigeration please bring it in the afternoon or contact us on [wfspta@gmail.com](mailto:wfspta@gmail.com)<sup>6</sup> to arrange. Thank you so much!

### **BRING YOUR OWN PICNIC TO THE SUMMER CELEBRATION FAIR!**

This year we are giving you the opportunity to bring your own picnic and picnic blanket so you can settle in and enjoy the evening (we are unable to offer hot food on this occasion). The PTA will have a fully stocked bar selling a range of alcoholic and non-alcoholic drinks, including bubbles, wine, beer, G&T cans and soft drinks. We will also offer a lovely selection of baked treats and snacks on our snack stall. Please do not bring your own alcohol on site.



### **WE STILL NEED A NEW WFS PTA TREASURER FOR NEXT YEAR!!**

We are still looking for someone to join our awesome team as **Treasurer** for the next academic year. This is a role that can be shared but it is an essential role and we will not be able to operate without one. Our lovely current Treasurer Sarah has children in Year 6 leaving the school at the end of term but she is happy to provide a full handover and support for a transition period. Without a new Treasurer in post we will unfortunately have to press pause on organising any further events including the Halloween disco, Fireworks and Christmas Fair.

---

<sup>6</sup><mailto:wfspta@gmail.com>

This also means we won't have the fundraising available for your children in school. We see currently fundraising for new Chromebooks and the redevelopment of the outdoor area, amongst many other things.

One of the children, Sofia Carey in 3D, has written a heartfelt letter to persuade you to come forward. Please do read it and give it some thought. Consider if you could join us and please get in touch on [wfjspta@gmail.com](mailto:wfjspta@gmail.com)<sup>7</sup> if you would like to find out more. We look forward to hearing from you

Dear Mummies and Daddies,

We would be very grateful if some of you could volunteer to be the new Treasurer of WFJS PTA. (parent teacher association) The PTA helps with organizing ~~fun~~ <sup>fun</sup> events that raises money for the children in school but we need a new Treasurer. Without one, we won't have any fun PTA events at WFJS and we are starting to get really desperate.

The Treasurer's Job is really important and they give us important <sup>information</sup> such as how much money we have raised and they count the money and look after the bank account.

I have had such fun at all of the events such as Disco's Colour Run, Pantomime, Inflatables, Fireworks, Winter Fair and Summer Fair! So if you want to carry on with all these fabulous events, please, don't be shy and don't hesitate to ask! Just volunteer!

We are very grateful and thank you for reading this lovely letter.

Yours Sincerely  
Sofia ✨

<sup>7</sup><mailto:wfjspta@gmail.com>



Please check your house and child's room for any school or library books and return them to the school. Children returning to the school in September will be permitted to take out a couple of books from the library for the summer holidays.

## Deadline for Ordering Uniform for Next Term



Please pass this on to your pupils parents & guardians



# IMPORTANT SCHOOL UNIFORM ORDERING INFORMATION PLEASE ORDER BEFORE **31ST JULY** TO AVOID DISAPPOINTMENT!

Please note: This date applies to schools returning at the start of September.  
Parents of schools with earlier return dates will need to order sooner.



We have already built up great stock levels to ensure your order is sent out in record time, however there can always be issues that are out of our control. With this in mind **please order as early as possible**, especially if your child is starting school for the first time!

**Orders placed up to and including the 31st of July will take priority** over all our current stock, so please place orders as soon as possible – This will help ensure that you receive your uniform in good time, as orders placed after this period are more likely to be subject to delays.

**Thank you and have  
a great summer!**

*The Mapac Team*

**Click HERE to order!**

If you'd like to have an update on your order,  
please email [tracking@mapac.net](mailto:tracking@mapac.net)

## YEAR 3

### Year 3 Workshop on 6th July 2026 Urgent Resources Needed

Next Monday, **Year 3** will be having a workshop from Roots and Shoots. Roots and Shoots is a charity which provides workshops to help promote sustainability, biodiversity and love with nature.

To ensure the students are fully prepared for the Roots & Shoots activities, we kindly ask for their support in collecting and bringing the following items - these items are essential for the workshop to commence!

#### Bug Hotel Activity

- Plastic milk bottles - (A minimum of 17 PRE-WASHED, 1.5L - 2L bottles needed). 1.5L water bottle as an alternative option
- Pinecones, twigs, small sticks, empty toilet rolls, a few cardboard boxes, bamboo sticks, bark, leaves, and/ or straw.

#### Plastic Bottle Bird Feeder Activity

- Clean, small/medium plastic bottles (A minimum of 17 pre-washed bottles needed, no bigger than 500ml). 500ml water bottles work best.

We have some of the resources but for everyone to be involved and participate, we need to make sure we have enough of each resource highlighted above.

**Kindest regards, Mr Taylor, Year 3 Class Teacher**

## YEAR 4

### Year 4 Painshill Park - Thursday 16th July

On **Thursday, 16th July 2026** we will be visiting **Painshill Park** to support science studies on minibeasts. We will be having a guided activity called "Pond Minibeast Investigation" and have the opportunity to look around Painshill Park. Pupils dip nets into water to search for invertebrates. This learning activity involves identification and analysis using identification keys. They will discover ecosystems, food chains, adaptation and life cycles. Gloves will be provided if learners would like to wear them for the pond dipping.

To cover the cost we must ask for a voluntary contribution of **£29.30 per child**, which must be paid via the Scopay website. We take payment as indication that you give permission for your child to take part. If you have problems or wish to pay in smaller instalments please contact the school office on 020 8393 0350. We will treat payment as permission to take part in the trip.

### Year 4 Art - Shoeboxes for Friday 10th July 2026

As part of our exciting art curriculum this term, the children will soon be designing and creating their very own 3D alien masks! To bring their imaginative designs to life, we will be using modroc (plaster-of-Paris bandage material) to build up texture and structure.

To help us prepare the base for this project, we kindly ask that each child brings in **one empty shoebox** from home.

School staff will safely cut and reshape these boxes into the required base structures for the masks before the children begin sculpting.

Please could all shoeboxes be brought into school by **Friday 10th July 2026**.

Thank you so much for your continued support and assistance in helping us provide these memorable, hands-on learning experiences for the children.

Kind regards,

**Mrs Curran and Mrs Kidwai**

***Year 4 Class Teachers***

## **YEAR 5**

### **Year 5 Science Fair – Monday 20th July 2026, 9.30am - 10am – Parents Welcome**

We would like to invite parents/carers to come in to the Year 5 science fair on **Monday 20th July 2026, 9:30 to 10:00**. The event will take place outside on the playground, near the shade sail area - weather permitting (or the school hall, if it is raining). The children will present their science fair projects to the rest of the school throughout the day.

Children must remember to bring in their science project on **Monday 20th July 2026** and will come in as normal for registration. Children will be encouraged to bring home their science projects **at the end of the day**.

We really appreciate all your support with the science fair. We are always amazed by the children's high quality projects and the confidence they show when explaining them to the whole school, staff and parents. We cannot wait for the science fair 2026!



### Mini Ukulele Concert Year 5

Year 5 Parents/carers have been invited to a mini ukulele concert in the school hall during the afternoon of **Tuesday 14th July 2026**. The children have been learning the ukulele since Easter and have prepared a few pieces that they would love to perform to you. I know there are lots of school events at this time of year which for working parents is not very convenient, so I will record the performances and share them with you as well. The pieces are only short and the concert will last about 15 minutes. They will take place during each class's music lesson, so the timings are as follows:

- **5S Concert - 13:40**
- **5H Concert - 14:45**

We hope that some of you will be able to come and join us.

## YEAR 6

**Year 6 Cricket Match versus Cuddington Croft 10th July 2026**

**Year 6 Mixed Cricket Fixture at Home Versus Cuddington Croft**

Your child has been selected to play in a Year 6 cricket match between Wallace Fields Junior School versus Cuddington Croft **on Friday 10th July 2026 straight after school and the match will be from 15:45 to 16:45.**

Please find the list of invites : Eliana A, Lucas E, Peggy K, Reema K, Averi L, Dylan L, Chloe W, Leena O, Ollie J, Harry J, Dilan C and Finley KQ. All parents/carers of invited players have been sent a google form to complete. Please do so by Monday 6th July so we can invite others if your child is unable to attend.

All parents are welcome to come and watch. Please send your child into school in their PE kit on the day. Also bring named sun cream, a hat and also bring a named water bottle.

Yours Sincerely, Chris Sellars, Sports Coach

### **Year 6 School Library and Class Book Amnesty**

Please have a good look around your Year 6 child's room for Wallace Fields Junior School library and class books and return them to school by **Monday 14th July 2026** at the latest. Much appreciated. Thank you.

### **Year 6 Decade Day - 10th July 2026**

This is a history themed day where the children can dress up in iconic styles from 1940s , 1950s, 1960s, 1970s, 1980s, 1990s and 2000s. We will do lots of fun activities like designing a record cover, making a boy/girl/pop group dance routine. If your child would like to dress up, please could you help them.

Personally, Ms. Gough and Miss Hill might resurrect some 90s clothing!

### **Year 6 D & T and Relationships Education**

The week commencing the 13th July 2026 will be production week. To keep the children busy during the day we have Fairground rides to build - easy and good fun to do. In addition, we have the final unit of Junior School Relationships education - please see separate letter for more information.

Please could you donate any shoeboxes for the D&T project.

### **Year 6 Bring in Bags on Monday 20th July 2026**

Please bring in a plastic bag or tote bag for your child to bring home artwork and books etc. so that the children don't have it all to take home on the final day. School Office medications will be handed to children on the last day to bring home.

### **Year 6 Leavers' Disco – Monday 20th July 4.30pm - 5.45pm**

We are having a disco for the Year 6s outside under the shade sail. Children will go home as usual at 15:30 and then they will need to return to school for **4.30pm**. They will then all need to be collected by a parent from the main gate from 17:45 where we will invite you to

dance to one more song with the Year 6s! Please complete the Google form to indicate permission for your children to come to this free event by clicking here<sup>8</sup>.

### **Year 6 Parents Invited to Leavers' Assembly 9am on Tuesday 21st July 2026**

The leavers' assembly/ French reflection assembly will be at 09:00 and we hope as many parents/carers as possible are able to attend - we suggest you bring tissues! It should finish by approximately 10:15.

### **Year 6 Shirt Signing 20th and 21st July.**

We permit the Year 6 children to get their school shirts signed by their friends at the end of term. Please send your child in with a named spare school shirt and a permanent marker pen on both days.

### **Year 6 Scopay Balance**

As your child is leaving our school, please do check that your Scopay balance is all paid up.

You also might like to consider a voluntary donation to the school on Scopay - any contribution would be much appreciated.

### **Year 6 Production of Grossbusters: The Musical**

Rehearsals have begun and the children are very enthusiastic! Tickets are now available to purchase via our online payment system Scopay. The ticket price covers the cost of putting on the show and despite increasing costs we have only slightly put up the price from last year. **Parents may purchase a maximum total of 4 tickets per child for either one performance or spread over the 2 performances.** You will not be issued with a ticket but a guest list will be held on the door.

- **Wednesday 15th July 6.30pm to approximately 8.30pm** (if England reach the World Cup semi finals on this date then we have a plan to start two hours earlier at 4.30pm) - Please purchase tickets on Scopay at **£8 PER TICKET**. If you require two tickets please pay **£16** or three tickets **£24** etc . Just change the price paid for the number of tickets you require; or

- **Thursday 16th July 6.30pm to approximately 8.30pm** Please purchase tickets on Scopay at **£8 PER TICKET**. If you require two tickets please pay **£16** or three tickets **£24** etc . Just change the price paid for the number of tickets you require;

In previous years we have offered limited tickets for the dress rehearsal but this year and future years, we will no longer be able to accommodate any parent or relative audience members as we cannot fit in the hall and safely access the backstage equipment.

**The deadline for purchasing your four allocated tickets is Monday 13th July** Any unpurchased tickets and a small surplus of extra tickets will be released after this date on a first come first served basis via Scopay.

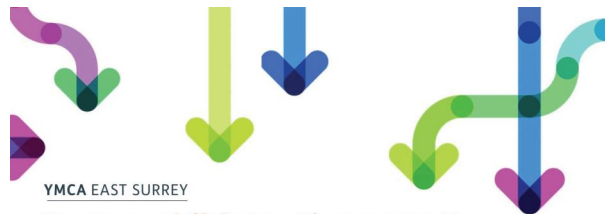
---

<sup>8</sup><https://forms.gle/zjqPgZDx9gt4dejK6>

**You can buy a professionally filmed copy of the show on a USB stick for £22 including postage.** The film will be by Magic Box Pictures who have been filming our school productions for many years. For your copy please pay £20 plus £2 postage on Scopay (this indicates permission to share your address with Magic Box Pictures). If you are happy to wait until September, then you can pay **£20 only** and collect from the office. Order deadline by Friday 17th July.

We are looking for some **more Year 6 parents to volunteer to run the pre-theatre and interval bar** during the production and help raise school funds. PTA will help stock the stall with drinks, ice creams and provide a cash float/ card machine. Bar volunteers will be given two free reserved seats in a prime position (in addition to the 4 paid tickets allocation). Please contact the office, if you can volunteer. Many thanks and we look forward to seeing you at the show.

### Free Support for Smooth Transition to Year 7



YMCA EAST SURREY

### Is your child starting year 7 this September?

Free support for you as your child prepares for the move to secondary school

YMCA East Surrey's Family Wellbeing Service offers free one-to-one support, practical advice and guidance to help you and your child navigate the transition with confidence this September.

- ▶ A supportive space to talk through any concerns
- ▶ Practical tips and resources to help your child settle into secondary school
- ▶ Sessions are available online, via phone or in person at a community venue
- ▶ Supporting families in the following boroughs: Elmbridge, Epsom & Ewell, Mole Valley, Reigate & Banstead and Tandridge



To register your interest, scan the QR code or complete this form:

[Family Wellbeing Service - parent transition session contact form](#)



For further information, please email the team at [communitywellbeingteam@ymcaeast Surrey.org.uk](mailto:communitywellbeingteam@ymcaeast Surrey.org.uk)

**YMCA**

Here for young people  
Here for communities  
Here for you





YMCA | Here for young people  
Here for communities  
Here for you

# Transition to Secondary School

## Summer Holiday Support Sessions

Is your Year 6 child feeling anxious about starting secondary school?

Learning Space & YMCA East Surrey are offering 1:1 young person & parent/carers support sessions during the summer holidays to help ease the transition.

These sessions focus on addressing anxiety, worries, building resilience and celebrating each child's strengths.

Sessions are offered in various locations throughout East Surrey, as well as online. Please choose your preference on the form.

Spaces are limited and will be allocated on a first come, first served basis.

Parents and carers can sign up using the QR code/link <https://forms.office.com/e/GHTAgndK3z>



Mineworks Surrey



# SAFEGUARDING and WELLBEING

All The National College, our WellbeingWednesday guides empower and equip parents, carers and educators with the confidence and practical skills to be able to have informed and age-appropriate conversations with children about online safety, mental health and wellbeing, and digital change. Formerly developed by Reported Online Safety, these guides now address wider topics and themes. For further guides, hints and tips, please visit [www.thenationalcollege.com](https://www.thenationalcollege.com).

## 10 Top Tips for Parents and Educators MANAGING DIGITAL BOUNDARIES FOR CHILDREN UNDER FIVE

Screens are part of everyday life, but they should not take over early childhood routines. For under-fives, healthy digital habits are built through simple, steady boundaries that protect sleep, play, connection, and development. Current UK guidance advises avoiding screen time for children under two – except for shared activities such as video calls – while children aged two to five should ideally have no more than one hour a day.

- 1 ASK A GROWN-UP FIRST**  
For under-fives, autonomy is important, but not when it comes to choosing digital content. Establish an "ask grown-up first" rule early, whether observed on any type of game, whether helping children read, or when they're not using apps and browser content. This rule can be reinforced by having parents, both in time, quiet play, or bedtime, helping children recognise that bedtime is approaching.
- 2 PROTECT SLEEP BUFFERS**  
Screens can make it harder for young children to wind down, especially when content is loud, busy, or fast-paced. Aim for screen-free time before sleep or meal times. To help children wind down more peacefully, use this time for calming routines such as stories, both in time, quiet play, or bedtime, helping children recognise that bedtime is approaching.
- 3 CO-VIEW AND CHAT**  
Screen time is safer and more meaningful when adults are involved. Co-view content, and when they're not using apps and browser content. Ask simple questions like, "What can you see?" or "What does that character mean?" This can promote viewing into shared interaction, supports language development, and helps adults spot and address unsuitable content, or confusing messages.
- 4 KEEP DEVICES HIDDEN**  
Young children are more likely to ask for devices when they are not in use. Keep devices out of sight and out of reach. They're not using apps and browser content to a shared screen instead of handing over a phone or tablet to a child. Encourage parents, modelling, supports shared viewing, and helps adults stay on top of what appears next.
- 5 PLAN THE TRANSITION**  
The hardest part of screen time is often stopping. Before the screen goes off, tell the child what's coming next and offer low-stress activities, such as blocks or drawing. This gives them a sense of agency without removing the boundary. A planned final activity prevents a sudden stop, which can quickly become tantrums or distress.
- 6 LEAD BY EXAMPLE**  
Children notice adult habits long before they understand adult explanations. If they're expected to put their screens away, they need to see adults doing the same thing during meals, play, and conversations. Create a shared phone hour, such as a basket or shelf, to show that technology has a place to stay, but does not need constant attention.
- 7 MAKE SCREENS PREDICTABLE**  
Young children do not always understand minutes, but they quickly learn patterns. When screen time happens at a regular point in the day, it becomes a routine rather than a negotiation. Use the same start and finish signals each time, such as a timer, goodbye words, or tidy-up moment, so children know what to expect next.
- 8 CREATE SCREEN ZONES**  
Physical boundaries help children understand digital boundaries. Keep screens out of bedrooms to protect their sleep and away from tables to prevent mealtime conversations. Choose one agreed "yes space", such as a shared living room area or supervised classroom corner. This makes limits feel less personal and more like a clear family or setting routine.
- 9 USE SIMPLE SCRIPTS**  
Transitions are easier when children hear the same calm language each time. Use short, repeatable phrases such as, "That's it, time to turn off," or "When the timer says 'no', that's it." Offer simple explanations during emotional moments. Simple, single-step negotiation helps children feel consistent, and give children clear expectations they can gradually understand and follow.
- 10 PRIORITISE SLOW CONTENT**  
Not all screen time feels the same to a young child's brain. Fast-paced, loud, and bright screen changes can make it harder for some children to settle down afterwards. Choose slower-paced, with simple stories, gentle voices, and natural pauses. Those of digital content that look, with more calm, nourishing choices than fast-paced, digital "sugar" content.

**Meet Our Expert**  
Katie Aggar is the founder of Cyber the Kid, an innovative educational initiative that transforms complex cybersecurity concepts into engaging, age-appropriate resources for children aged 3-12. She has worked for leading cybersecurity services for corporations and serving as an expert panel member on national matters, helping bring corporate cybersecurity expertise to the early years world.

**WakeUp Wednesday**  
The National College

[www.thenationalcollege.com](https://www.thenationalcollege.com)  
@wake\_up\_weds /www.thenationalcollege @wake.up.wednesday @wake.up.weds

Users of this guide do so at their own discretion. No liability is entered into. Current as of the date of release: 01.07.2023



## New UK online safety measures - What's covered?

	<b>Social media</b>	Restrictions on access to major social media platforms for under-16s. Platforms named by the Government which may include are TikTok, Instagram, Snapchat, Facebook, X and YouTube. <b>✔ YouTube Kids is not currently included in the ban.</b>	
	<b>Communicating with strangers</b>	Features that allow under-16s to communicate with strangers would be restricted across relevant online services, including gaming platforms.	
	<b>Livestreaming</b>	Under-16s would not be able to create or host livestreams.	
	<b>AI chatbots</b>	Romantic or sexual AI chatbots will be banned for under-18s. All AI tools must also switch off similar features for anyone under 18.	
	<b>16-17-year-olds</b>	Livestreaming and stranger-contact protections would be switched on by default. Additional protections are under consideration.	
	<b>Platform design</b>	The Government is considering measures such as overnight curfews, breaks in infinite scrolling and other design changes to support children's wellbeing online.	
	<b>Age verification</b>	Simply asking children to enter their date of birth will no longer be enough. Platforms will need to introduce robust checks, the exact methods are still being decided.	

## Free Parenting Workshop 9th July 2026 at Leatherhead Community Hub



**Epsom, Ewell & Banstead**

(incl. Mole Valley North)  
REGISTERED CHARITY 1156539

**Parenting Workshop  
9th July 2026  
10 - 12  
@ LEATHERHEAD  
COMMUNITY HUB**

### **SUPPORTING EMOTIONAL HEALTH & BUILDING RESILIENCE**

Life can be unpredictable and challenging at times. Sometimes we will fail, be let down, be disappointed, or find things hard to do.

In a world that can sometimes feel worrying and out of their control, we need to give children skills to feel resilient to life's knocks, to pick themselves up and carry on.

Children need to learn to trust that they can cope with life's challenges. Building your child's self esteem, and giving them faith that they can cope when things don't go to plan, is essential.

This workshop will introduce ways to build confidence, self-esteem and resilience, which will allow children to regulate their emotions and become more independent



**To book a place, or for more information, contact Lesley Lane at:  
Email: [lesley.lane@hseeb.org.uk](mailto:lesley.lane@hseeb.org.uk)  
Phone: 07554 403522**

**Lesley Lane, Senior Family Coordinator at Home Start Epsom, Ewell and Banstead** will be running a free parenting workshop to support Positive Mental Health and Build Resilience on 9th July. This will take place from 10:00 until 12:00 at Leatherhead Community Hub. Please see the attached flyer for more information.

## Best Start Hubs in Epsom and Ewell offer Parenting, Child and Family Advice and Support

**Best Start Family Hubs** (formerly children's centres) are local "one-stop shops" where families can access parenting advice, health visitor services, stay-and-play sessions, and SEND support.

Operating nationwide, they assist families with children from pregnancy up to age 19 (or 25 for SEND).

For Epsom and Ewell residents, your local Best Start services are managed by Barnardo's on behalf of Surrey County Council.

### Your Local Hubs

#### Ewell Family Centre (Serves Ewell & Stoneleigh)

- **Address:** Riverview Road, West Ewell, Surrey, KT19 0JP
- **Services:** Offers family support, 1-1 home assistance, play sessions, and on-site full-time childcare.

#### Epsom Family Centre (Serves Epsom & Langley Vale)

- **Address:** Pound Lane, Epsom, Surrey, KT19 8RY
- **Services:** Hub for midwifery appointments, infant feeding support, and parenting workshops.

Click here<sup>9</sup> for the website for Barnardos Family Centres for Epsom & Ewell



### Our Commitments to Improving Support for Autistic Pupils & Families

Following our autistic review, we are committed to creating an inclusive, understanding, and supportive environment where autistic children can thrive. We are working closely with families to ensure every child feels safe, understood, and able to succeed. This week in school we have been...

#### Communication with Families

- Regular, predictable communication (e.g. weekly updates or check-ins)
- Flexible communication options (phone, email, home-school books)

---

<sup>9</sup><https://www.barnardosfamilycentressurrey.org.uk/what-we-do-at-epsom-ewell>

- Listening to parent expertise—you know your child best
- Clear explanation of changes (staffing, routines, expectations)

✔ What this means: Families feel informed, listened to, and involved.

[Click here<sup>10</sup> for More Information About Safeguarding at Wallace Fields Junior School](#)

## CLUBS UPDATE

### Club letters for Autumn Term

We are still gathering club letters from the club leaders. We hope to share them with parents/carers by the **end of next week**.

### Supporting Access to Clubs and Enrichment Opportunities - Childcare Vouchers

We are very proud of the wide range of clubs and enrichment activities available to our pupils. These opportunities play an important role in extending learning beyond the classroom, helping children to develop new skills, interests and friendships.

Whilst we believe that clubs make a valuable contribution to a child's education and wellbeing, we also recognise that the cost of participating can sometimes present challenges for families on lower incomes. We are committed to ensuring that all children have the opportunity to benefit from the extended curriculum, regardless of their family's financial circumstances.

Families who receive Free School Meals or who are experiencing financial difficulty may be able to access support. In addition, childcare vouchers can be used for a number of our club providers that are Ofsted registered, including:

- **NS Sport (Football)**
- **JAG Wraparound Care (Junior Adventures Group) Breakfast Club and Wraparound care**
- **Code Camp (Computing)**

Please visit the providers' websites for further information and contact the club leaders directly regarding the use of childcare vouchers.

We also work closely with our club providers and regularly ask them to offer subsidised or complimentary places for children from low-income families. These opportunities are often available, and we are always keen to help families access them wherever possible.

---

<sup>10</sup><https://wallacefields-jun.surrey.sch.uk/our-school/safeguarding>

If you would like your child to attend a particular club but are concerned about the cost, please do not hesitate to contact the school office or speak directly with the club leader. We would much rather have a conversation and explore the available support than see a child miss out on an opportunity.

To ensure that funded places can benefit as many children as possible, we do ask that any child receiving school-funded support attends their allocated club regularly. Please note that it is not generally possible to move between different clubs once a funded place has been agreed.

Supporting children and families is important to us, and we are keen to remove barriers wherever we can. If you would like further information about financial assistance with clubs and enrichment activities, please contact the school office in confidence. We will be happy to discuss the options available.

### Summer Holiday Club Now Open for Bookings

NSSport Holiday Activities  
**Wallace Fields**  
**3-28 August**

**Nearby Asriol Venue Continues Until 4 September**

SAFE. ACTIVE. FUN. ALL SUMMER LONG.

[Make a Booking](#)

**View Holiday Activities Flyer**

**NSSport Holiday Activities is the perfect place to have fun**

We provide active, affordable and exciting childcare for primary school aged children in school years 1-6. We aim to inspire children with a passion for health and fitness through innovative activities and unique approaches. Recently rated as Ofsted 'Outstanding' and led by a dedicated, enthusiastic and highly qualified team we ensure your child is safe and experiences the best time. Our knowledge allows us to care for your child in a fun, age appropriate and friendly environment whilst maintaining their physical, social and emotional development.

## Full Play Options

We are pleased to inform you that NSSport Holiday Activities camps offer a full range of play options which allow you to work freely or go about your daily routine uninterrupted knowing that your child(ren) are in safe hands.

<b>STANDARD PLAY</b> <b>£31</b> 09:45 - 16:35	<b>EXTENDED AM/PM</b> <b>£34</b> 08:00-16:15 09:45-18:00	<b>EXTENDED PLAY</b> <b>£37</b> 08:00 - 18:00
---	---	---

### Here's what we have to offer

#### USE AURIOL WEEK 1: 20-24 JULY

NO STABLE SPACE REPLACEMENT  
NO STABLES FOOTBALL CHALLENGE

[Go To Bookings >](#)

#### USE AURIOL WEEK 2: 27-31 JULY

NO STABLES HULA HOOPING  
NO STABLES FOOTBALL GAMES

[Go To Bookings >](#)

#### WEEK 3: 3-7 AUGUST

NO STABLES SPORTS PLANNING  
NO STABLES FOOTBALL GAMES

[Go To Bookings >](#)

#### WEEK 4: 10-14 AUGUST

NO STABLES HULA HOOPING  
NO STABLES FOOTBALL FACTORS

[Go To Bookings >](#)

#### WEEK 5: 17-21 AUGUST

NO STABLES SPORTS GAMES  
NO STABLES FOOTBALL PITCH

[Go To Bookings >](#)

#### WEEK 6: 25-28 AUGUST

NO STABLES HULA HOOPING  
NO STABLES FOOTBALL GAMES

[Go To Bookings >](#)

#### USE AURIOL WEEK 7: 1-4 SEPTEMBER

NO STABLES SPORTS INCHWORMS  
NO STABLES FOOTBALL CHALLENGE

[Go To Bookings >](#)

## How do I make a booking?

All bookings via our website at [nssport.co.uk](http://nssport.co.uk)

**If you haven't booked with us before** you will need to register for an NSSport account. Registration is a one off process just so we have all the relevant information about your child as well as your contact details. Registration can be done via our website [nssport.co.uk](http://nssport.co.uk). Select the **VENUE** followed by the **REGISTER** button from the website header.

Once you have registered you will have access to our **BOOKINGS** area. Select the activities which you wish to book and add to your **BASKET**, then proceed to **CHECKOUT** to make payment. We accept children's vouchers (a list can be found on our website within the FAQ section), debit and credit cards. Please ensure you select the correct **CARD TYPE** when entering your details and confirm your **NAME** and **ADDRESS** are filled in correctly as displayed on your card. Failure to do so may result in an unsuccessful booking. A booking confirmation email will be issued when payment has been made to confirm your child's place.

All bookings must be placed on our website and are allocated on a first come first serve basis. We are unable to reserve any places. Please make yourself familiar with our terms and conditions regarding all our policies prior to booking. We ask that when your child(ren) attends a NSSport Holiday Activities camp they are in good health. We welcome guests to all our venues and look forward to having a fun time with your child(ren) over the holiday period.

### Have a question?

Should you require any further information or have some questions regarding our service, please do get in touch by email and we will be happy to assist.

[Email Us](#)

#### Social media

[Change your privacy settings](#)

Stay up-to-date with current activities and future events by following us on your favourite social media channels.



## COMMUNITY



**Glyn School**  
**Open Evening**  
Year 7 Entry September 2027  
**Thursday 9 July 2026**  
Parents and Carers to arrive from 4.30pm onwards  
Headteacher talks at 4.45pm, 5.45pm & 6.45pm

No Booking Required

Ofsted  
Outstanding Provider

The poster features a photograph of Glyn School's main building and a large green lawn with several people walking. The school's crest is in the top right corner.

### Children's Commissioner Survey of Young People and Children

At a time of significant change for children and young people, it is more important than ever that their voices are heard. Through The Big Future, the Children's Commissioner can take the views of students directly to government and ensure their priorities help inform the decisions that affect their lives. Please complete the survey below:

<https://www.childrenscommissioner.gov.uk/thebigfuture>

### EPSOM PANTRY

Surrey Epsom Pantry is a charity that has just opened a new shop at **24 South Street Epsom KT18 7PF** and for a weekly subscription of **£5.00** members of Epsom and surroundings areas will be able to purchase weekly a food shop including fresh fruit and vegetables.

The Pantry Shop in Epsom has limited opening hours at the moment: Monday 11 am–1 pm, Tuesday 9:30–11:30, Wednesday Closed, Thursday 10:00 –12:00, 16:00 - 18:00, Friday 09:30–11:30, Saturday Closed and Sunday Closed.

The Epsom Pantry was on 5 News recently <https://www.yourlocalpantry.co.uk/news/news-coverage/5-news-visit-epsom-pantry/>

For more information click here<sup>11</sup>.

---

<sup>11</sup><https://www.yourlocalpantry.co.uk/pantry-listings/epsom-pantry/#:~:text=Key information,Tuesdays%3A9%3A30am - 11%3A30am>

## Epsom Food Bank

**This week we need the following:**

- **Urgent we have none:** Powdered Milk, Long Life Juice, Chocolate, Hair Conditioner, Washing Up Liquid, Cooking Sauce and Pasta/Beans with Meat.
- **Urgent:** Sugar, Biscuits, Squash, Tinned Meat, Pasta Sauce, Sponge Pudding, Tinned Vegetables, and Male/ Female Deodorant -

Please use our supermarket donation points or bring donations directly to us at Epsom & Ewell Foodbank, Good Company Hub, behind West Ewell Primary School, Ruxley Lane, Ewell KT19 0JG

We are open for donations Monday - Friday, 9am-2pm (closed Bank Holidays)

**Please ensure donations are sealed, in date and do not contain alcohol.**

Many thanks for all your support - we really do appreciate it!

*We always welcome donations and promise to use them to provide help to people in need. Donations will be shared across Epsom & Ewell Foodbank<sup>12</sup> and Epsom and Banstead Par<sup>13</sup>ty. This ensures your donations go to help people who use our services wherever they are.*

*Please contact us<sup>14</sup> if you have any questions about donating food.*

*Do let us know if you book a supermarket delivery direct to us so we can tell our warehouse team when to expect it.*

*We are unable to accept refrigerated or frozen items.*

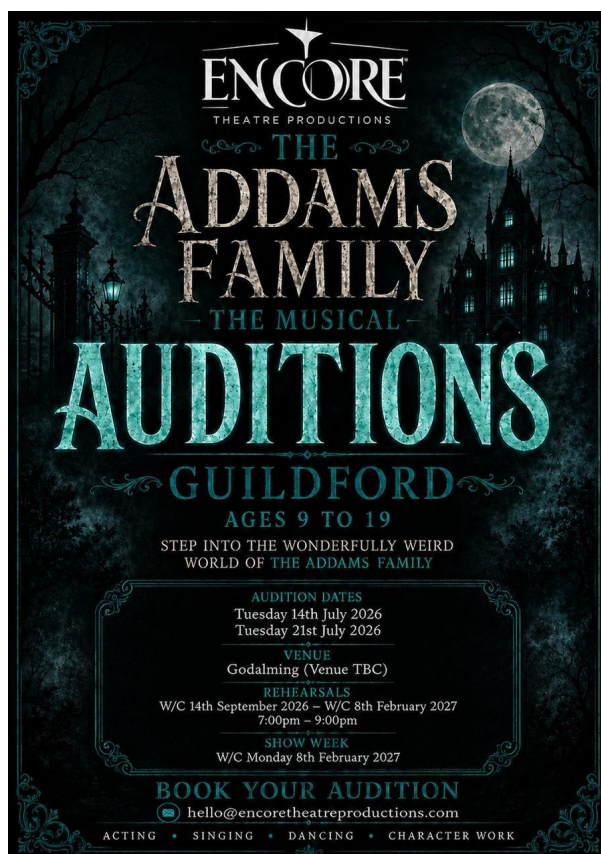
---

<sup>12</sup><https://us.list-manage.com/GfUwKSFsEOR?e=fe66267346&c2id=964f18375d5fc01120ab03cfe63635a3>

<sup>13</sup><https://us.list-manage.com/HEjVutyLili?e=fe66267346&c2id=964f18375d5fc01120ab03cfe63635a3>

<sup>14</sup><mailto:foodbank@goodcompany.org.uk?subject=null&body=null>

## Other Community Posters



**ENCORE**  
THEATRE PRODUCTIONS

THE  
**ADDAMS  
FAMILY**  
— THE MUSICAL —

**AUDITIONS**  
GUILDFORD

AGES 9 TO 19

STEP INTO THE WONDERFULLY WEIRD  
WORLD OF THE ADDAMS FAMILY

AUDITION DATES  
Tuesday 14th July 2026  
Tuesday 21st July 2026

VENUE  
Godalming (Venue TBC)

REHEARSALS  
W/C 14th September 2026 – W/C 8th February 2027  
7:00pm – 9:00pm

SHOW WEEK  
W/C Monday 8th February 2027

**BOOK YOUR AUDITION**  
hello@encoretheatreproductions.com

ACTING • SINGING • DANCING • CHARACTER WORK



 **Rosebery School**

**Open Evening**  
Thursday 9 July 2026

*For Prospective Year 7s (September 2027 Entry)*

**4.30pm to 7.30pm**

- Parents and Carers to arrive from 4.30pm
- Latest suggested entry is 7.00pm, as the school will close at 7.30pm
- Student-led tours throughout the evening
- Last tour departs at 7.00pm

Headteacher Talks in the Main Hall at 4.45pm, 5.45pm and 6.45pm

**Rosebery School**  
Whitehorse Drive  
Epsom  
KT18 7NQ  
01372 720439

**RUGBY SUMMER CAMP 2026**  
**MONDAY 17TH - FRIDAY 21ST AUGUST**

Now in its 18th year   120+ children in 2025   DBS checked coaches



**2025 PRICES HELD FOR FIRST 50 BOOKINGS**  
**FROM £40 PER DAY**

**For children in Reception to Year 10 (2025-26)**  
Drop off: 9:00am | Pick up: 3:30pm  
Rugby & games: 9:45am - 3:15pm  
Breakfast & late club available  
Enquiries: [suttonandepsom.camps@gmail.com](mailto:suttonandepsom.camps@gmail.com)  
Rugby Lane, Cheam, SM2 7NF



**Sutton & Epsom RFC**  
An amateur community rugby club

**SCAN TO BOOK**

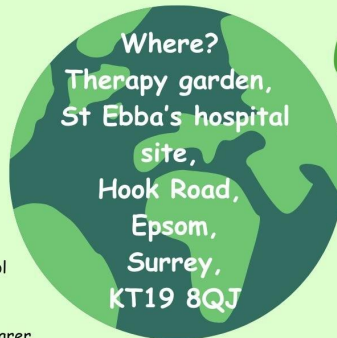
# NatureWell Activity Group



## Who?

Year 6 students who attend school in Epsom & Ewell & Mole Valley and would like to feel more confident about their move to secondary school in September 2026.

Young people will need to be accompanied by their parent or carer. The sessions will be facilitated by staff from the school based needs team at Mindworks.



## Where?

Therapy garden,  
St Ebba's hospital  
site,  
Hook Road,  
Epsom,  
Surrey,  
KT19 8QJ

What3Words:  
///loaded.wheels.finest  
Google maps Plus Code:  
9P2G+459 Epsom

## When?

Wednesday 22 July 2026 1.30pm to 2.45pm  
Wednesday 29 July 2026 1.30pm to 2.45pm  
Wednesday 5 August 2026 1.30pm to 2.45pm  
Wednesday 12 August 2026 1.30pm to 2.45pm  
Wednesday 19 August 2026 1.30pm to 2.45pm



Ideally you would attend all 5 sessions, but we know that you might be going on holiday or have other things planned so please join us for as many sessions as you can!

## Why are we doing this?

To try some new activities outdoors  
To meet other young people moving to secondary school  
To do something together with your parent/carer  
To build confidence and to have fun

## What do I need to do?

Come along and be prepared to join in the activities.  
Wear/bring weather appropriate clothing - eg raincoat,  
sunhat, jumper

## What we will do?

Spend time in our natural surroundings and be creative

If you are interested to find out more please email your contact details to: [sbnepsom@sabp.nhs.uk](mailto:sbnepsom@sabp.nhs.uk) by 6 July 2026.

**SURREY  
ARTS**

# BEATS LAB CREATIVE MUSIC PRODUCTION WORKSHOP

16 JULY

## Your Sound, Your Vibe, Your Lab

A free workshop building skills and making beats in any genre on Ableton Live. Taught by industry professionals. No experience required.

BOOK  
HERE



8 to 12 year olds - 4.30pm to 6pm

13 to 17 year olds - 6pm to 7.30pm

St Bede's School, Carlton Rd, Redhill RH1 2LQ

T: 01483 519303

E: [surreyartsmusic@surreycc.gov.uk](mailto:surreyartsmusic@surreycc.gov.uk)



Discover more about music lessons at:

[surreycc.gov.uk/music](http://surreycc.gov.uk/music)



**PRODUCTIONS**  
YOUTH THEATRE GROUP  
01767 681 049

A NEW MUSICAL

# OPEN AUDITIONS

# PETER PAN

By J.M. Barrie

This amateur production of "Peter Pan" is presented by arrangement with Great Ormond Street Hospital Children's Charity and Concord Theatricals Ltd. on behalf of Samuel French Ltd. [www.concordtheatricals.co.uk](http://www.concordtheatricals.co.uk)

THURSDAY 25TH JUNE	SUNDAY 28TH JUNE
LEATHERHEAD THEATRE, 7 CHURCH ST, KT22 8DN	LEATHERHEAD TRINITY SCHOOL, WOODVILL RD, KT22 7BP
5.00pm-6.00pm 7-12yrs old	2.00pm-3.30pm 7-12yrs old
6.00pm-7.00pm 13-21yrs old	3.30pm-5.00pm 13-21yrs old

All auditionees must be 8 years old by the time of the show

To be performed @ Leatherhead Theatre 7th-9th January 2027

## NOTHING TO PREPARE

Just arrive, book in and audition

You only need attend one audition / A show fee is payable by all successful applicants



Strength • Flexibility • Stillness

# Taoist Tai Chi™

## Introductory Sessions

Start Anytime

Mondays • 6:30pm to 8:00pm

Wallace Fields Junior School  
Dorling Drive, Epsom, KT17 3BH

01206 576167  
londonweb@taoist.org  
taoisttaichi.org



A charity registered in England and Wales (1053425) and in Scotland (SC039513)  
©™ Trademarks of Cotnam Holdings Co. Ltd., used under license by Fung Loy Kok Institute of Taoism

*Your Local*  
**PANTRY**

**Your Local  
Pantry -  
Development  
Brochure**

May 2026

“

Helping people have hope, that's what the Pantry is about, helping people have

**HOPE  
DIGNITY  
AND CHOICE.**

Even if you don't have anything else, if you have those, you can survive.

Volunteer at Peckham Pantry

”

Your Local **PANTRY**  
The story so far...



Stockport Homes Group develops the Your Local Pantry Model to help people before they reach crisis point and to sustain community. They partner with Fareshare Greater Manchester and open the Penny Lane Pantry in 2013. Skylight, which is part of Stockport Homes Group, now operates five Pantries in Stockport.



In 2014 Church Action on Poverty partners with Stockport Homes Group to roll out Pantries across England, Wales, Scotland and Northern Ireland.



During the pandemic, Pantries excel as sustainable community food solutions. By December 2021, the Your Local Pantry network has grown to 64 Pantries across the UK.



Your Local Pantry partners with Coop (2022 - 2025) to grow the network in the face of the cost of living crisis.



The 100th Pantry opened in July 2023, in the same year that the first Your Local Pantry celebrated its 10 year anniversary.



## What are Pantries?

*Your Local Pantries are all about dignity, choice and hope, bringing people together around food!*

We operate in over 120 communities across the UK, softening the blow of high living costs and bringing people together around food.

Pantries support people on low-incomes, strengthening communities, fostering friendships, loosening the grip of poverty and contributing to healthier, happier lives.

Pantries are laid out like shops and members choose their own items from a wide selection, including: fresh, refrigerated, frozen and long-life foods.

Each Pantry has a defined geographic area and local residents can apply to become members.

Members pay a small amount each week, and in return, they choose at least 10 items of food or other groceries worth many times more.

Everyone should have ready access to good food, and everyone values community. Pantries are a win-win solution.

## What is the Your Local Pantry Network?

We are a network of local Pantries brought together by shared values and a belief that we are better together. It includes Pantries operating in all four nations of the UK.

Each Pantry is run by a local organisation. Pantry hosts include community groups, charities, churches, housing associations, foodbanks, schools and local councils.

Each Pantry is supported by a named central Development Coordinator and Pantries also learn from and support each other with expertise, problem-solving and best practice.

By joining the network, your Pantry will be part of a movement of organisations who put dignity, choice and hope at the centre of their work.

At Your Local Pantry, it's about more than food. Pantries are welcoming community spaces where people can access affordable food, connect with others, and support one another. Many become a catalyst for wider community action and local ideas.

Members are treated with dignity and empowered to make choices — from the food they take home each week to how they use their average weekly saving of £27. Members can also get involved in activities such as cooking groups, volunteering, social events, and helping shape their Pantry through feedback and Steering Groups.

Your Local Pantries are positive, values-led spaces where friendships grow, finances go further, and communities become stronger.

“It's great to know you're not alone in your struggles. That there's help and support if you need it, not just the food side of things. There's always a very warm welcome with refreshments offered upon arrival.”

Pantry Member



## Why the Your Local Pantry Model Works

- A proven, values-led model that continues to learn and innovate
- Flexible to local needs while rooted in core Pantry values
- A full support package including training, tools, software, resources, and ongoing guidance from a dedicated development team
- Access to a wider network offering peer support, shared learning, and collaborative opportunities

“I would say I'm just really grateful for YLP because there's loads of pantries out there that do their own models ... but being a YLP makes my life so much easier with the way it works, the systems, the background stuff, the membership database, and the support I get off YLP is amazing”

Heidi, Pantry Coordinator

“We decided to go with Your Local Pantry because it's a perfect package, it's got everything that we need. It had all the support in place, the database, the systems, the IT, so we didn't have to reinvent the wheel.”

Abi, Pantry Coordinator

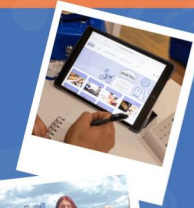
## The Development Process

When launching a Your Local Pantry from scratch, a dedicated Development Worker will lead you through a well informed development process that draws on insights gathered from launching Pantries in more than 120 communities.

The development process covers every aspect such as venue setup, volunteer recruitment and training, member engagement, membership management, and operational guidance.

The goal of the development process is to set up Pantries that thrive and flourish for the long term, are sustainable by design and ensure a dignified experience for their members.

We also have experience of converting other food project models into Your Local Pantries. We use a bespoke approach for this, to assess the partners' specific needs and requirements, as they're not starting from scratch.



## Opening a Your Local Pantry

If you think a Your Local Pantry would benefit your community, then get in touch with the team! You'll be invited to meet a Development Worker and complete an application form.

The Your Local Pantry Network package includes the following:

Set-up and development support	A comprehensive development process delivered by a dedicated Development Worker, who will provide one to one support to develop and open the Pantry.
Pantry Handbook	A comprehensive manual giving step-by-step instructions to guide you through setting up and operating a Pantry.
Procedures, Guidance Documents and Templates	Documents relating to day-to-day Pantry operations and performance management. PDF Templates of Pantry operational documents, Guidance Documents on additional options for Pantries such as Family Membership or Healthy Start Vouchers.
Digital Marketing Package	Personalised branding and a digital marketing packaging including posters, flyers and social media content.
Pantry Management Software	Bespoke membership management system with built in reporting and monitoring. The system also records and reporting Pantry finances, volunteer management and referral tracking.
Training	Management Training, Volunteer Training and Software Training delivered during the development period. Refresher training and access to training resources also.
Annual conference and Networking Opportunities	An annual network conference, regular Pantry networking events. Ongoing communications across the Your Local Pantry network to share learning and access peer support.
Ongoing Support	Pantries in the network receive ongoing support by a core support team, with appointed Development Worker.
Network Partnerships	As part of a recognised model, the network provides access to national partners, suppliers and service providers.
Uniform	Each Pantry receives an initial batch of branded uniforms.
Website	Advertising of each Pantry site, good news stories and key messages via <a href="http://www.yourlocalpantry.co.uk">www.yourlocalpantry.co.uk</a>

## How much does it cost to join Your Local Pantry?

Joining the Your Local Pantry network involves an initial development fee and an annual subscription. We work hard to keep costs as low as possible, but fees may vary depending on current funding arrangements. Please speak to a Development Worker for the latest pricing and tailored advice.

Each Pantry will also have its own set-up and running costs, which can vary depending on location, size, and food provision. This may include equipment such as fridges and shelving, alongside ongoing costs like food and day-to-day operations. Your Development Worker can help you plan and estimate these costs using our financial modelling tools.

## Want to know more?

### Attend a webinar

The YLP Team host online sessions where you can learn more about Your Local Pantry and how to get involved.

Email: [info@yourlocalpantry.co.uk](mailto:info@yourlocalpantry.co.uk) for more details

### Email us

If you have any questions about opening a Your Local Pantry, then one of our Development Team will be delighted to speak with you.

Our Development Coordinators cover different areas of the UK, so you will be connected to the one who covers your area when you email: [info@yourlocalpantry.co.uk](mailto:info@yourlocalpantry.co.uk)



[www.yourlocalpantry.co.uk](http://www.yourlocalpantry.co.uk)  
[info@yourlocalpantry.co.uk](mailto:info@yourlocalpantry.co.uk)



@yourlocalpantry



The Your Local Pantry network is coordinated by  
Church Action on Poverty, charity number 1079986