



Wallace Fields Junior School Newsletter

8th December 2023

KEY DATES

- **Monday 11th December 2023** - Christmas Concert Epsom College Chapel - Rehearsal am. Evening Main performance.
- **Tuesday 12th December 2023** 'The Three Musketeers' - Christmas Panto. All morning. (PTA funded).
- **Wednesday 13th December 2023**
 - Lower School PTA Christmas Fun Day - all included for one donation - Morning.
 - Christmas Jumper or headwear and tinsel with uniform for Christmas lunch with crackers. Open to Packed Lunches.
- **Thursday 14th December 2023**

- Upper School PTA Christmas Fun Day - all included for one donation - Morning.
- Choir lunchtime singing in the park 12:45-13:10.
- **Friday 15th December 2023** - Early finishing after lunch. **1.25pm** Upper School (Year 5 and 6). **1.30pm** Lower School (Years 3 and 4)



[Click Here¹](#) for Upcoming Events

[Click here²](#) for School Calendar and to Subscribe to Calendar

HEAD'S UPDATE

Excellent SATs (National Test) Results: The verified SATs results are published at this time of year and yet again we have achieved very high levels in our SATS results. Surrey has around 230 primary schools and Wallace Fields Juniors came **20th** in the whole borough of Surrey and higher than most local schools. This is obviously a wonderful achievement and we are very proud of the academic success we reach here. The National Tests (SATs) are a culmination of four years teaching and learning that ensures the children meet their potential and in most cases exceed it. The results are a culmination of the hard work, support, challenge and enthusiasm driven into the curriculum in all year groups. Our curriculum is planned very carefully so that new concepts are revised in later years and deepened as they progress up through the school. We are very proud of the excellent academic success of the children, though we also like to celebrate our sporting and pastoral success as a school - and these are not recognised formally.

¹<https://wallacefields-jun.surrey.sch.uk/events>

²<https://wallacefields-jun.surrey.sch.uk/calendar>

Subject	Wallace Fields Juniors at standard 2023	Wallace Fields Junior Greater Depth 2023	Surrey at Standard 2022	Surrey at Greater depth 2022	National at Standard 2023	National Greater depth 2023
Reading	93%	46%	80%	34%	73%	28%
Writing	82.4%	28%	71%	17%	71%	13%
Maths	87%	43%	77%	28%	73%	22%
Grammar Punctuation & Spelling	91%	47%	-	-	72%	-

Thank You to Our Supportive Parents: Thanks also to the parents and carers who are ensuring the children read at least three times a week at home, support the homework set for the children (including providing a quiet space to do it in) and generally enthuse the children's efforts to really give everything a go to their very best ability. Without that, school can appear to be an uphill struggle and despite all the encouragement and support here, we need parents and carers to come along on that journey with us as we work together to educate and inform our children to get them 'secondary ready'.

THIS WEEK

Stars of the Week - 8th and 1st December 2023



Girls' Football Tournament 8th December 2023 Match Report

On 8th December 2023 ten girls from the football squad attended a 7-a-side football tournament at Auriol Junior School. Six teams took part from Epsom and Ewell. Thanks to Coach Tim and Mr

Sellers. It kicked off with a very exciting game against Meadow. Wallace Fields Juniors made many shots though somehow none of them found the back of the net. The match ended in a 0-0 draw. The next couple of games were also exciting with some great football skills on display. The girls are starting to really develop as a team. Overall they came fourth though we are looking forward to see more wonderful games in 2024.

PTA Christmas Hampers

Thank you for all the incredible colourful donations on the Christmas Hamper Mufti Day. From the Hampers Mufti the PTA have managed to create a large number of hampers - the most being Year 3 and their red hamper collection. You have to have entered the raffle to win one of these beautiful hampers. The hampers will each be numbered and then the tickets will be drawn at the end of the school day on Monday. There is a very small window of opportunity to buy tickets and if you still have tickets unsold at home this weekend then remember to get the money in with the fully named ticket if you want to be in with a chance of winning one of these brilliant hampers. The winners will be announced at the Christmas Carol Concert on Monday Evening along with the number of the hamper each winning ticket has won. Good luck. The winners can collect their hamper during the day over the remainder of the week - just call in at the office.

<http://twitter.com/statuses/1733121765071806518>

Winners of The Carol Concert Programme Designs

The following children are the winners of the programme design competition whose designs will feature on the programmes on Monday: William F 3D, Amelia Ph 3T, Marta H 4C, George H 4K, Alexandra S 5H, Monty A 5S, Lucy L 6G and Amelia D 6C There were many lovely designs and in some classes it was very hard to choose. For this reason I have also got a group of children who are runners up, who will be commended and receive Dojos in assembly.





Well Done to the Chess Club Tournament Winners!

The following children won awards in the chess club tournament:

Year 3 & 4 - 1st Philip M, 2nd Lucas E, 3rd Finlay KQ, and 4th Kian R

Year 5 & 6 - 1st Elliot W, 2nd Zac W, 3rd Andy W, and 4th Henry M /Zach D

Beginning winners - 1st Monty W, 2nd Amelia P, 3rd Ethan W and 4th Rihan S.

IMPORTANT

Christmas Fun Fair at Wallace Fields Juniors!



The PTA will be hosting an in house Christmas Fun Fair, throughout the school day Spread across two days the participating children will enjoy festive inflatables, Christmas games and prizes, arts and crafts, delicious *hot chocolate and snacks.

So parents - no need to volunteer this year and no need to stand outside in the cold buying hot drinks and hotdogs. The PTA have got you covered! We are simply asking for **£8** per child payable via PTA events.

<https://www.pta-events.co.uk/wfjspta>

But don't worry our Christmas loving parents, we haven't forgotten about you, our famous festive hamper raffle is happening and we hope it will be bigger and better than ever! ❤️ PTA Elves *all dietary needs accommodated



Parent Helped Needed Morning of Monday 11th December 2023

Thank you to the parents have already signed up. We still need some more parent volunteers to walk with the children to and from the Epsom College chapel in the morning of Monday 11th December 2023 for the rehearsal. We are leaving school at 9.00am and returning at 11.45am.

Parents do not need to stay for the whole dress rehearsal unless they wish to. If you can help please email Office1@wallacefields-jun.surrey.sch.uk³

Christmas Carol Concert Monday 11th December 2023 Final Details

We are all looking forward eagerly to our Christmas Concert on **Monday 11th December at Epsom College Chapel 7pm to 8pm**. The details have been emailed out to all parents/carers but below is a summary.

- We expect **all children to attend** unless we have been informed by email
- All children wear **full school uniform** and ensure hair is brushed, tidy and tied back. They will need a coat as they will be walking to and from the chapel, and entry and exit may involve some standing outside whatever the weather
- There is **no parking at Epsom College** so you will need to leave enough time to park in local streets and walk up to the chapel.
- If you require **disabled parking** then please contact Wallace Fields Junior School office by Friday 8th December 2023 and we can arrange permission with Epsom College.
- Epsom College have asked that **NO ONE arrive on site before 6.30pm. The Concert will start at 7pm** (not 6.45pm as in previous letter).
- **Pupils** will enter through the side entrance on the (roadside) left hand side of the chapel and their teacher will register them.
- **Parents/Carers** will need to enter through the main entrance to the right of the front door. Please **queue to the right of the door** (uphill) allowing space for disabled access on the ramp.
- Guests and Governors who give their time freely to the school will be offered **reserved seating** as a thank you.
- There are **plenty of seats** including behind the choir stalls and on a balcony at the back. TV screens mean that everyone should have a good view of the performance.
- Please note there is **no toilets** in the chapel.
- You can take **photographs and videos** of the event for your personal use. Please do not share on social media
- We will be raising funds for "Save the Children" at the end of the concert. Some children will be shaking a collection bucket as you depart so please **bring some cash**.
- Please see below more details about collection at the end of concert.

Thank you again for your support and cooperation and we hope you enjoy the concert.

Collecting Children at the End of the Performance

A swift departure is planned at the end of the concert though safety comes first. Your patience and cooperation is very much appreciated.

- After the concert, **parents and visitors exit** out of the same main doors and turn right.

³<mailto:Office1@wallacefields-jun.surrey.sch.uk>

- **All children exit out of the side door.** The Year 3 (and siblings of Year 3) leave first, then Year 4 (and siblings of Year 4) and so on. There will be marked out areas, on the grass, to the side of the chapel for each year group.
- The children wait with their class teacher in their group area. All children are dismissed directly by their teacher to their parent/carer.
- Please do not cross the roped area into the class area.
- **No children will be permitted to walk home alone.**
- **If someone other than the child's parents/carers are collecting your child** following the Carol Concert please complete the Google form as soon as possible and before midday on Monday 11th December 2023 .<https://forms.gle/QoHiuXsqUgAafhaWA>



Carol Singing in the Park - Thursday 14th December 2023

We are delighted to be able to take the whole school choir to sing carols outside Park View Café in Alexandra Park on Thursday 14th December. A number of members of staff will walk the children to the park after they have had an early lunch, aiming to arrive and start singing shortly after 12.45pm for around 20-30 minutes. It would be lovely if you could come and support us.

As we will be walking around 70 children, if you are planning to come and watch and wouldn't mind accompanying us on the walk to and from school, some extra adult assistance would be much appreciated. (Please email the office).

Could we ask that on this day your child brings a warm, thick coat to school as well as a hat or festive headwear as we will be standing outside for up to half an hour. After the singing, we will walk the children back to school for the remainder of the afternoon's lessons.

The café will be baking extra treats for this event, but unfortunately, as the children will be in our care, they will not be permitted to buy or eat food at this time.

We will be collecting for the All-weather pitch fund so if you have any spare change, donations would be very welcome.

Photos and Videos Permitted But Not Shared on Social Media

You are welcome to take **photographs and record videos** of all the lovely school and club events, but please ensure they are strictly for your personal use only. Do not share any photographs or videos

on social media or any public platform as some children are not permitted to be included and their privacy and digital footprint must be protected. Thank you for your understanding.

PG Films

Children may watch a PG film at the end of term in the class room. If you do NOT give permission for your child to watch a Parental Guidance film please contact the school office by Monday 11th December 2023 on Office1@wallacefields-jun.surrey.sch.uk⁴ who will make their class teacher aware.



YEAR 3

Design & Technology Week

This week, Year 3 have been making Christmas packages. The children had to create their own designs, make their own net and build a 3D shape. All children showed brilliant resilience this week and there has been promotion of the FAIL approach (First Attempt In Learning). Well done Year 3 - you have been fantastic! Please see pictures of the week on X (Twitter).

⁴<mailto:Office1@wallacefields-jun.surrey.sch.uk>

WELLBEING & SAFEGUARDING

BRING IT TOGETHER

Come and join our friendly group for a coffee, cake and a chat.
Little ones welcome.
Meet other parents with SEN children for some helpful tips, tricks and support.

21st November
28th November
12th December
19th December

Tuesday Afternoons 1.30pm – 2.30pm

Contact cc.office@ewellfamilycentre.com or 0208 337 7310 for inquiries

LET'S SUPPORT EACH OTHER



BY BRINGING IT ALL TOGETHER!




What Parents & Carers Need to Know about DISNEY+

WHAT ARE THE RISKS?

LESS SUITABLE CONTENT
While Disney+ is predominantly family friendly, there are some movies and shows in its library which are aimed at an older audience. These may scare younger viewers or contain themes or language that you'd rather your child wasn't exposed to. You could avoid such situations by enabling parental controls (see 'Adjust content settings' below) or specifying a content age rating for your child's profile.

BINGE WATCHING
With the option to view content on any internet-enabled device and a growing catalogue of movies, cartoons and documentaries, Disney+ can make managing screen time difficult. This could result in children binge watching content, displacing them from activities like homework or exercising. Too much screen time has also been shown to negatively impact mood, sleep patterns and weight.

PHISHING EMAILS
Be especially cautious if you receive emails or text messages purporting to be from Disney+. There have been numerous reports of online scammers impersonating Disney+ staff in an attempt to gain access to subscribers' personal information. Disney+ states it will never email or call customers asking for their payment details, their private information or their password.



ENCROACHING ADVERTS

Disney+ has introduced a new advertisement package - Disney+ Standard with Ads - which plays commercial adverts before movies and during shows. Like many TV channels, there are no adverts in Junior mode, but profiles with a content rating of 10+ years will see ads representative of their age category. Adults who give consent will see personalised adverts based on their location and viewing history.

ACCESSING ADULTS' PROFILES

If adults don't set a PIN for their profile, other users could access it and encounter content which isn't age appropriate. In the settings, your profile has a toggle titled 'Kid-proof' (a) which you can use to lock four words (numbers, spelled out) and enter them to access profiles. For older children who can read, though, this isn't secure enough - so using a PIN for adult profiles is recommended.

Advice for Parents & Carers

ADJUST CONTENT SETTINGS

When setting up an account, there's an option to create profiles in which to restrict Junior Mode. This generally means restricting that it's suitable for children up to age 10 and is therefore fairly limited. You can give older children a wider choice of viewing by building a standard profile, then going into the settings and choosing a content rating from one of the pre-set alternatives: G, PG, 12+ or 14+.

TURN OFF AUTO-PLAY

When a cartoon, show or movie finishes, Disney+ uses algorithms to identify content with similar themes, which it thinks your child will also enjoy. This suggestion will then automatically begin to play by default. There's an option to turn off this auto-play function in the profile settings, which is an option to help your child to take a break from the screen and move on to a different activity.

ADD PIN PROTECTION

Disney+ enables you to effectively lock profiles behind a four-digit PIN, so preventing some of the shows on the platform's list of content that are for more mature or adult (including several hard-hitting crimes from US networks), so protecting parents' or older children's profiles with a PIN will help to prevent younger children's stumbling across material which isn't intended for them.

ENJOY AS A FAMILY

When your child switches a movie or show on Disney+ for the first time, you may want to sit with them to ensure it's suitable. You could do this some when introducing them to older films that you haven't seen for years: your perception of what's appropriate has very probably changed, and some of the language and situations in movies from your own childhood may seem quite shocking today.

Meet Our Expert

Dr Helen Smith is a leading expert in child protection, safeguarding and responsible use of technology. She has been involved in numerous high-profile cases and is a frequent speaker at national and international conferences. She is also a member of the National Online Safety Board and a member of the National Online Safety Advisory Group.



National Online Safety
#WakeUpWednesday

Twitter: @nationalonline_safety Facebook: NationalOnlineSafety Instagram: @nationalonline_safety YouTube: @national_online_safety

Users of this guide do so at their own discretion. No liability is entered into. Current as of the date of release: 05.05.2022

Some lunchtime clubs such as choir, British Sign Language (BSL) and gardening are just rock up and take part though once started commitment is needed so make sure you only start clubs you really want to do.

The netball and football squads will continue with the same players and with information on SPOND.

Click here⁵ for all the club letters you can also see them on the clubs page on our website.



Does your child aspire to be the next Pablo Picasso, Vincent van Gough or Andy Warhol, or do they just like making a variety of creative pieces of work? If so, our Arts and Crafts club could be for them! The club is open to all years. It will run in the classroom 6G on a Monday from 3:30 until 4:30pm.

January 8th – March 25th 2024 (10 sessions) Cost £75.00

8th, 15th and 22nd and 29th January 2024

5th February 2024

HALF TERM (12th-16th February 2024)

INSET DAY 19th February 2024

26th February 2024

4th, 11th, 18th, 25th March 2024

We will be completing a variety of activities of which they will bring home the end result. They will be learning about time management and how to successfully work within a team. I will award a 'Star Creator' at the end of each session. The price includes all the materials the children will need, my facility hire costs, equipment needed for the activity and all tutelage.

⁵<https://wallacefields-jun.surrey.sch.uk/clubs>

Your children do not need to bring anything with them as everything will be provided for them.

If you would like to reserve a place, please contact me by email (below) with your child's name, class, your contact number and any allergies or medical conditions that I should be aware of. All places are provisional until payment and medical details are received.

Places will be allocated on a first-come-first-served basis, and I will send confirmation email and provide payment details by return.

Many Thanks in advance.

Kind regards

Ms S White (Teaching assistant)

swhiteartsandcrafts@yahoo.com



CALLING ALL LEGO LOVERS

Lego Club is open to all years. It will run in the Music Room on a Tuesday from 3:30 until 4:30pm.

January 9th – March 26th 2024 (11 sessions) Cost £66.00

Please note – children who signed up for the two week taster before Christmas have £6 credited to their account.

9th, 16th and 23rd and 30th January 2024

6th February 2024

HALF TERM (12th-16th February 2024)

20th and 27th February 2024

5th, 12th, 19th, 26th March 2024

We will be completing a variety of activities following a range of themes. A star team will be awarded a certificate and space in our Lego display cabinet for that week!

Your children do not need to bring anything with them as everything will be provided for them.

If you would like to reserve a place, please contact me by email (below) with your child's name, class, your contact number and any allergies or medical

**SPRING TERM
COOKING CLUB**




*Lots of Exciting Middle Eastern
Recipes
Plus Fun Easter Baking*

**Wallace Fields
Junior School**

**Tuesday after school
until 4.30pm**

9th Jan-26th March


*Half term 13th Feb
11 sessions at £9.95*



**Middle Eastern
Cooking**

www.growcookejoy.co.uk

Contact Details: jayne@growcookejoy.co.uk 07805107064
Book here: www.growcookejoy.co.uk



grow cook & enjoy

Garden CLUB

Wallace Fields Junior School

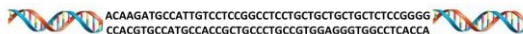
SPRING 2024

Mrs Dodd's gardening club is on Tuesday lunchtimes, but it will be weather dependent.

Upper school will be 12.10-12.40 and Lower school 12.40-13.10.

*It is a free "turn up and join in club" but Children **must** bring wellington boots (or old shoes) & coats otherwise they can not take part. Gardening gloves will be supplied but welcome to bring some too*

Club may be cancelled at short notice if bad weather forecast.



Year 6 Science Club – Spring 2024

Dear Parents/Carers of Year 6 children,

Why study science? Science helps satisfy the natural curiosity with which we are all born: why is the sky blue, how did the leopard get its spots, what is a solar eclipse? Science is a way of discovering how things work today, how they worked in the past, and how they are likely to work in the future.

*"Nothing in life is to be feared, it is only to be understood.
Now is the time to understand more,
so that we may fear less"*

Marie Curie – the only person who has won a Nobel Prize in two different sciences.

Science Club will run on **Thursday after school** for 10 weeks, starting on January 11th. It will take place in the **Computing Suite** from **3:25pm to 4:25pm** and if the weather allows us, we will also have outdoor/messy/fun experiments. All the resources needed for the experiments are included.

To book a place for your child, please send payment and email their details by Monday 8th January.

On-line payment to L Hernandez Ortiz
account number: 13617521
sort code: 20-29-90
ref: WFJS + your child's class and surname
amount to pay: £100.00

Otherwise, please hand cash or cheque to the school office with your child's name and e-mail me their details.

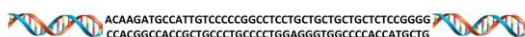
E-mail:

- their name
- class
- medical conditions, dietary restrictions and/or allergies
- who will pick them up **and** if they can/cannot walk home alone after half term
- if photos and videos can/cannot be taken – to be shown only at WFJS
- your name
- your emergency contact number

PLEASE NOTE: If your child has previously joined the club, please e-mail their name and class only, unless any other details have changed.

Yours sincerely,

Lorena Hernández
spanish.science@pobroadband.co.uk



Year 4 Science Club – Spring 2024

Dear Parents/Carers of Year 4 children,

Why study science? Science helps satisfy the natural curiosity with which we are all born: why is the sky blue, how did the leopard get its spots, what is a solar eclipse? Science is a way of discovering how things work today, how they worked in the past, and how they are likely to work in the future.

*"Nothing in life is to be feared, it is only to be understood.
Now is the time to understand more,
so that we may fear less"*

Marie Curie – the only person who has won a Nobel Prize in two different sciences.

Science Club for Year 4 will run on **Tuesday at lunchtime** for 10 weeks, starting on January 9th. It will take place in the **Computing Suite** from **12.40 to 13.10** and if the weather allows us, we will also have outdoor/messy/fun experiments. All the resources needed for the experiments are included.

To book a place for your child, please send payment and email their details by Friday 5th January.

On-line payment to L Hernandez Ortiz
account number: 13617521
sort code: 20-29-90
ref: WFJS + your child's class and surname
amount to pay: £70.00

Otherwise, please hand cash or cheque to the school office with your child's name and e-mail me their details.

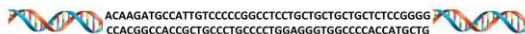
E-mail:

- their name
- class
- medical conditions, dietary restrictions and/or allergies
- if photos and videos can/cannot be taken – to be shown only at WFJS
- your name
- your emergency contact number

PLEASE NOTE: If your child has previously joined the club, please e-mail their name and class only, unless any other details have changed.

Yours sincerely,

Lorena Hernández
spanish.science@pobroadband.co.uk



Year 3 Science Club – Spring 2024

Dear Parents/Carers of Year 3 children,

Science Club for Year 3 will return in the spring term after a successful autumn term.

I have been teaching at Wallace Fields for over ten years, voluntary school-time sessions and science and Spanish clubs. I will continue supporting my daughter to run the Year 3 Science Club voluntarily; she is a former pupil who in the past two years has organized a successful science enrichment day for the whole school.

It will take place in **3D** on Tuesday after school, **15:30 to 16:30**, for 8 weeks starting on January 23rd. To cover the cost, a voluntary contribution of £15.00 per child will be used to buy the materials needed for the experiments.

To book a place, please send your contribution and email their details by Friday 5th January.

On-line payment to L Hernandez Ortiz
account number: 13617521
sort code: 20-29-90
ref: WFJS + your child's class and surname
amount to pay: £15.00

Otherwise, please hand cash or cheque to the school office with your child's name and e-mail me their details.

E-mail:

- their name
- class
- medical conditions, dietary restrictions and/or allergies
- the names of those who will pick them up
- if photos and videos can/cannot be taken – to be shown only at WFJS
- your name
- your emergency contact number

If your child has previously joined the club, e-mail me their name and class only, unless any other details have changed

PLEASE NOTE there are only 12 places available.

Yours sincerely,

Lorena Hernández
spanish.science@pobroadband.co.uk



After School Hip Hop Dance Club
NEW TERM DATES FOR ALL YEAR GROUPS
Tuesday 9th January – Tuesday 19th March
3.30pm-4.30pm

We are delighted to be back with classes running every Tuesday for all year groups through the 10-week spring term at a cost of just £6.50 per week. The classes are full of fun, learning hip hop routines, dance games and use of dance related props.

Please contact Lauren, by email to book your child's place
lejdancecompany@gmail.com

Please state their name, any medical conditions, year group and emergency contact number.

The total cost of £65.00 for the sessions are to be paid via bank transfer.

Please make the payment to the following details:

Account Name – LEJ Dance Company

Sort Code – 60-05-17

Account Number – 19130406

Thank you!



Theatre Arts Club

at

Wallace Fields Junior School



Thursdays/Fridays from 3:30 to 4:30 in the Hall

Years 3 to 6

Dear Parents/Carers,

If your child is interested in singing, dancing and acting out songs and scenes in a relaxed and friendly atmosphere then Theatre Arts Club could be for them!

Due to demand I hope to run this club on Thursday and Friday afternoons from 3:30 - 4:30 pm. It will commence on Thursday 11/1 and Friday 12/1 and there will then be 9 sessions. The last sessions will be on the 14/3 and 15/3 and we will hope to do a little performance in that session.

Places are limited to 25 children; the cost will be £63 for the term. It might be sensible for your child to bring a small snack and drink to have before the session begins.

I am a qualified Primary School Teacher with a passion for singing and acting, particularly in Musicals, and I was in many in my youth!

If your child would like to join, then please email me which day you prefer and your child's full details/class/any medical conditions/emergency contact details/email address/preferred method of payment.

Please make payment to following BACS details Mrs A E Kennedy Account Number 66914949
Sort Code 60-17-12

Best Wishes,
Amanda Kennedy Mobile: 07790 566878
Email amandak3nn3dy@gmail.com
(Parent of Emma Kennedy past pupil)

Dear Parent/Carer

Wallace Fields Book Club will be continuing in the Spring term.

The club takes place *once a month* at lunch time (Tuesdays Yrs 3 and 6 and Wednesdays Yrs 4 and 5) and aims to encourage your child to enjoy reading for pleasure, introducing them to new authors and genres they wouldn't normally choose and widening their appreciation of books and stories. We pick from a choice of titles each month and come prepared to talk about what we've read over the past 4 weeks. We also have a monthly question from the Book Monster which fosters discussion on wider topics such as 'Should you ever watch the movie before reading the book?' and 'Which book characters would you most like to have over for supper?' We do a literary-based quiz or game at the end of each term, with prizes and at the end of the academic year children receive certificates to celebrate their reading.

The fee per term is £15 per child. You source the books from a store or library. The wonderful WFJS school library is constantly being updated and so often has copies.

If your child is already a member and would like to continue, or if should you wish to sign them up for the first time, **please contact me at steph.clarkson@btconnect.com so I can add them to my register and send you the full schedule.**

Please note that due to the busy nature of the end of term The final Book Club sessions this term take place next week on Tues 5th (Yrs 3 and 6) and Weds 6th (Yrs 4 and 5).

The fee of £15 per term per child should be paid to the account below to secure your child's place. Please put your child's name and Year group in the reference:

Stephanie Clarkson
Acc: 86035002
Sort: 50-30-10

Kind regards,
Steph Clarkson



CHESS CLUB

WEDNESDAYS, 3.30 pm to 4.30 pm



Chess club will return on Wednesday 10th January 2024, 3.30 – 4.30pm. Hope to see lots of children returning and also welcome new members.

Research has shown that chess improves children's academic performance, particularly their mathematical and problem solving abilities by:

- Developing critical thinking and logical reasoning
- Improving numeracy
- Improving concentration and patience
- Promoting imagination and creativity
- Teaching children about planning ahead
- Teaching that their actions have repercussions

BEGINNERS learn from scratch how to play and **PLAYERS** enhance the skills they already possess. There shall be tournaments within the club, where prizes are up for grabs in different tournaments for various age groups/abilities.

Time of Club	-	Wednesdays, 3.30 – 4.30 pm
Dates	-	10/01/24 to 27/03/24 (11 weeks)
Term Fee	-	£66.00
Contact	-	Deborah Casey
Email	-	debs.casey@outlook.com / tele 07989156996

HOW TO JOIN – NEW MEMBERS

Please send me an email BEFORE 3RD JANUARY with the following information:

Child's name, school and year group (as at Sept 23)
Contact number for emergencies
Whether your child has any medical issues/allergies
Level of Play (player/beginner)
Permission to walk home alone after February half term if appropriate
If your child attends JAG after chess club

On 4th January I will let you know if your child has a space and forward details on how to make payment.

HOW TO JOIN – CHILDREN IN CLUB LAST TERM

As long as payment is received by 3RD January you are guaranteed your space in the spring term. I do not need an email, just a text to say payment has been made. If you need payment details again, please let me know. If contact details have changed please inform me.

Get creative after school!

Returning to your school after Christmas



Coding Years 3 - 6

Brand new
content!

Calling all budding game designers! Our highly-rated Coding after-school club allows older children to create and publish their own unique games using our custom platform, Code Camp World. We have made Code Camp World as accessible as possible, meaning that children can focus on the fun aspects of coding whilst developing problem-solving and creativity skills.

Book now - limited spaces available!

Years 3&4: <https://my.codecamp.co.uk/course/695>

Years 5&6: <https://my.codecamp.co.uk/course/696>

hello@codecamp.co.uk
www.codecamp.co.uk

★★★★★
4.9 stars on reviews.io



Piano Lessons for the Spring Term

There are a limited number of spaces available for piano lessons.

If interested, please contact Ms Cratchley:

email: alisonmcratchley306@gmail.com

Phone: 07526 692231



Wallace Fields Junior School Tennis Club

If you'd like to book, please fill in the below form and send to enquiries@tennisbull.co.uk
Min. of 8 children to run a session. Ratio is 20:1 with an assistant coach if needed.

Half-Term Monday 12th February to Friday 16th February

DAY	DATES	TIME	AGE	COST
Monday	8 th Jan – 25 th March (INSET DAY 19 th Feb)	7.45am – 8.40am	Year 3/4/5/6	£105 (10 weeks)

Player Name: _____ School Year: _____

Tel No: _____ (Day) Tel No: _____ (Emergency)

Medical Conditions: _____ Medication: _____

Contact Name: _____ Email: _____

End of Term Prizes – All Competitors will receive a TennisBull certificate on completion of the 10-week term to reward their perseverance, hard work and dedication.

Weather – Sessions will move to a classroom (if available) where tennis relative activities (wordsearches, fun quizzes, games etc) or School Hall (if available). **Tennis club will not be cancelled due to weather.** Please wear appropriate clothing e.g., jumper, tracksuit bottoms, woolly hats and gloves in winter, shorts, hats in summer.

Parent/Guardian Declaration: I have read and understood this form, completed all the details to the best of my knowledge and will ensure that I comply with the information set out. By signing the below, I DO give permission for any photographs/video footage taken of my child/ren during the course to be used on social media or for TennisBull promotional/marketing purposes.

If you have any questions, please do not hesitate to email Alex Bull at enquiries@tennisbull.co.uk or 07984717251

Signature of Parent/Guardian: _____ Date: _____



Gymnastics Club Spring Term

Mondays 3.30 - 4.30 Term time only

£80- for the Spring Term

First session - 8th January

Last session - 18th March



To register your interest please contact Chris with your child's name, contact number and any medical requirements at csellars@mail.com

The Club operates on a first come first serve basis.

Dodgeball Club



Year 5 and 6 only
Friday Mornings 8 am
£65 for the Spring Term

Term time only
First session - 12th January
Last session - 22nd March

To register your interest please contact Chris at csellars@mail.com with your child's name, class, contact number and any medical requirements.



GUILDFORD JUDO CLUB @ Wallacefields

Judo is based on the ancient art of Ju-Jitsu and focusses on self-defence techniques to counter strength and size with leverage, balance and a knowledge of anatomy.

Judo is a sport for children of all sizes and abilities, helping to improve fitness, coordination and confidence. Pupils will have the opportunity to be graded and enter competitions, however are very welcome to take part in lessons just to train, learn some self-defence and socialise.

The Tuesday 8am session is for years 5&6 and Wednesdays at 8am is for years 3&4, the cost is £7.50 per lesson and are billed per term, the Autumn term will start on the 9th/10th January and the last session will be the 19th/20th March, 10 sessions in total.

If you would like your child to attend Judo Classes or have any questions please contact me via the details below.

My contact details are:
Dave Kennedy
07941 603 022
dave@guildfordjudo.co.uk



YEAR 5 AND 6 TAG RUGBY!

Tuesdays 3:30-4:30 term time only

£80 for the Spring Term

First session-9th January

Last Session -19th March



Participants must bring warm sports clothing, football boots and waterproofs.

To register your interest please contact Chris with your child's name, class, contact number and any medical requirements at csellars@mail.com

The club operates on a first come first served basis

No Clubs Week commencing 11th December 2023

There will be **no clubs** in the final week of term week commencing **11th December 2023**.

You might want to book into the wraparound care provider JAG for the sessions the clubs are not running. For more information click here.⁶

Wraparound Care Provided by Junior Adventures Group - JAG!

Junior Adventures Group Club (JAG) provides excellent wraparound care at Wallace Fields Junior School. They run Breakfast Club from **7:30am until 8:40am** and After School Club from **3:25pm until 6:00pm**. From September, a new part session 4.30pm -6.00pm has been created for After School Club and is live on the JAG Magic Booking system (price is £11.00). This means your child can attend a Wallace Fields Club and then join JAG at 4.30pm at the reduced price. This is from September 2023 and available to the juniors only.

It is very helpful if all parents could register on JAG <https://www.junioradventuresgroup.co.uk/term-time/after-school-club/> even if they never use JAG during their time at WFJS. This would allow a late pick up in an emergency. JAG cannot take unregistered children due to them being under a different Ofsted registration. The office cannot look after a child beyond school day and those children who are regularly picked up late must register with JAG.

⁶<https://wallacefields-jun.surrey.sch.uk/parents/wrap-around>



Book Club - December Meeting

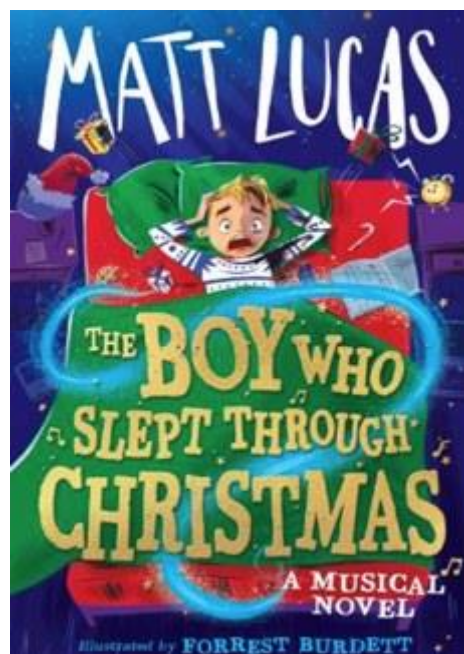
We discussed our November reads. This month's Book Monster question was: Which book would you most like to find in your stocking or under the tree this Christmas? We also did a Merry Quizmas book game. Winning teams were: Yr 3 – Oliver B, Alice M and Jake; Yr 4 – Toby and Adam; Yr 5 – Daniel W, Imogen and George D and Yr 6 – Grace and Lucy B.

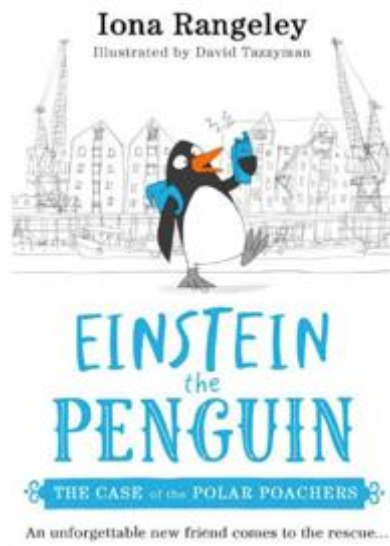
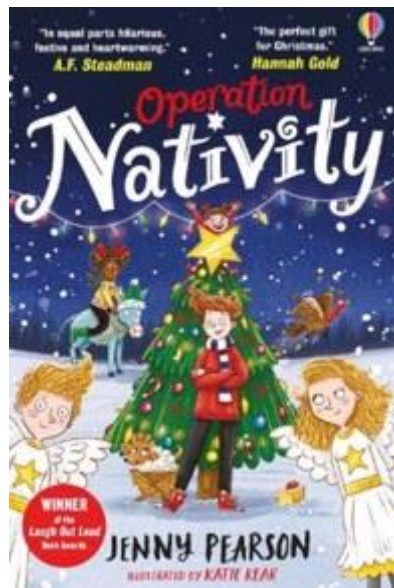
Over the holidays we have a smorgasbord of fun reads to enjoy! Listed from easier to more challenging choose whatever floats your festive boat!

- Blyton's classic series reimagined as a story for Christmas by a different author - *The Magic Faraway Tree – A Christmas Adventure* by Jacqueline Wilson
- If you haven't read this brilliant adventure, then now's the time! *The Christmas Pig* by JK Rowling
- Penguins are disappearing at an alarming rate! Can Imogen solve the mystery? *Einstein the Penguin and the Case of the Polar Poachers* by Iona Rangeley
- 25 chapters (one a night in December) for a festive countdown with this 'advent' book. *Step Father Christmas* by L.D. Lapinski
- Love David Walliams' books? Now see if his comedy partner can write. This is a book and a musical all in one! Scan the QR codes throughout to access the songs. *The Boy Who Slept Through Christmas* by Matt Lucas
- It's Time to Save Santa! *Virtually Christmas* by David Baddiel
- What if Mary, Joseph, the donkey and the angel Gabriel all suddenly landed in your garden? *Operation Nativity* by Jenny Pearson

- A frosty, atmospheric adventure from this best-selling author *The Ice Children* by M.G. Leonard









General Reminders and News

Coffee EAL Afternoon - 11th January 2.45pm -3.30pm

Parents/Carers of children with English as an additional language (EAL) are invited to attend a coffee afternoon on 11th January from 2.45-3.30pm. Please email THallett@wallacefields-jun.surrey.sch.uk⁷ if you would like to attend so she can gauge numbers for teas and coffees.

Coughs, Colds and Covid

It has been a tough week regarding staff and children absence with the arrival of the winter sniffles - please do bare with us as we make every effort to keep the school day running as close to normal as possible during weeks like this. High staff absence puts a strain on a very carefully balanced timetable and so some realignment of staff is needed in order to prioritise lessons. Please do send your children into school if they feel well enough and if they become unwell during the day then standard procedures come into place - there is detailed advice below.

Don't Forget To Bring in a Named Coat Every Day



⁷<mailto:THallett@wallacefields-jun.surrey.sch.uk>

COMMUNITY NEWS

Applying for a Junior School Place for September 2024

The closing date for on-time applications to **Wallace Fields Junior School** for children wanting to start in Year 3 in September 2024 is **15 January 2024**.

If your child does not have an Education, Health and Care Plan (EHCP) and are leaving Year 2 of an infant school in July 2024 then you should follow the steps on this page on the Surrey County Council website by clicking here⁸.

If your child is already in primary education and needs to change schools outside the normal admissions period (for example, if you are moving house), you should apply for an in-year admission instead by clicking here.⁹

If your child has an EHCP, you must follow the procedure for applying for a school place for a child with an EHCP by clicking here¹⁰.

Home Start Epsom, Ewell and Banstead Crowd Funding Appeal

This Christmas we would be very grateful if you could help Home-Start Epsom, Ewell and Banstead avoid closing in 2024 due to lack of funding by donating to and sharing our Crowd Funding Appeal.

Help us continue to be able to offer vital practical and emotional help to local parents experiencing challenging times. With your support, we can bring real and long term benefit to our community's children and families. You can read more about our Appeal and donate here:

<https://www.crowdfunder.co.uk/p/home-start-epsom-ewell-and-banstead-1156539>

We know that not everyone is in a position to donate – but you can help strengthen our Appeal by sharing the Appeal link and attached flyer with: friends, family, colleagues, neighbours, parents and teachers at your children's school or nursery, local services and businesses– anyone you know who cares about our community! Because Together Everyone Achieves More.

Should you wish to find out any further information about our work generally please visit our website: <https://hseeb.org/Ho>



<https://youtu.be/1mc04VyZxdM>

⁸<https://www.surreycc.gov.uk/schools-and-learning/schools/admissions/primary-junior-and-infant/apply#start>

⁹<https://www.surreycc.gov.uk/schools-and-learning/schools/admissions/in-year>

¹⁰<https://www.surreycc.gov.uk/schools-and-learning/send>

Epsom Town Centre Plan

Epsom and Ewell Borough Council has “unpaused” its draft local plan and I am expecting further consultation about its proposals for the whole area shortly. I will let you know when I hear more about when you can become involved again.

But in the meantime it has published its more detailed proposals for Epsom Town Centre and is seeking opinions about them. You can take part in the consultation at <https://epsom-ewell.inconsult.uk/ETCMP/>

"The Big Ambition" Survey

‘The Big Ambition’ provides a much-needed opportunity for the children of England to tell policy makers what is important to them ahead of the General Election.

Children and parents can complete the survey here:
www.childrenscommissioner.gov.uk/thebigambition¹¹

It only takes 5-10 minutes and can be completed in assemblies, form times, PSHE or in other lessons in the run up to Christmas or when you come back in January. A suggested lesson plan can be found on our webpage.¹² Alternatively, please share this flyer¹³ with a link to the survey with parents and children to complete at home.

Let's make sure that the children and young people of Surrey are represented in the results.

Thank you again and Merry Christmas!

Very best,

Dame Rachel De Souza

Children's Commissioner for England

¹¹<http://www.childrenscommissioner.gov.uk/thebigambition>

¹²<https://www.childrenscommissioner.gov.uk/the-big-ambition/>

¹³<https://assets.childrenscommissioner.gov.uk/wpuploads/2023/11/Childrens-Commissioner-The-Big-Ambition-Flyer.pdf>

SILHOUETTE THEATRE COMPANY PRESENTS

A Christmas Carol

By Charles Dickens



*A classic tale for
Christmas – of greed,
ghosts and humbug!*

Saturday 9th December 2023, 6.00pm
(doors open at 5.15pm for tea & cakes)
Epsom Methodist Church, Ashley Road,
Tickets Adult £4, Child £3, Family £10, (cash or card) from:-
Church Office, or Cara Golding, or Keith Halstead at
khalstead@alpha-advisors.co.uk

EARLY BOOKING ADVISED



barnard
marcus

TOY DRIVE

NHS 75
Epsom and St Helier
University Hospitals
NHS Trust

**HOME
START**
Epsom, Ewell
& Banstead

UNTIL 15TH DECEMBER

PLEASE DONATE GENTLY USED OR NEW TOYS TO
HELP EPSOM HOSPITAL & HOME START PROVIDE
OTHERS WITH CHRISTMAS!

PLEASE TAKE DONATIONS TO:

2 Kings Shade Walk, The Ashley Centre Epsom, KT19 8EB

This year send your cards by

7TH EPSOM COMMUNITY CHRISTMAS POST

ONLY 50p PER CARD

HELP YOUR LOCAL SCOUT GROUP RAISE MONEY & WE CAN HELP YOU SAVE!

Deliveries in: **KT17, KT18, KT19 & KT21**
Epsom, Ewell and Ashstead

LAST COLLECTION - 8pm Thursday 14th December

For postbox locations, PTO or go to www.7thepsom.org.uk/activities/christmas-post

Please include your payment (in cash) with your cards & post them into a Scout postbox

Every penny goes to help:

Scouts
7th Epsom (Methodist)

Official sponsors:

MICHAEL EVERETT

The Ashley Centre

COMMUNITY CHRISTMAS POST

Postbox locations 2023

Note: all postboxes are yellow except those in the Ashley centre which are blue

EPSOM		
Clarks (outside)	The Ashley Centre	KT18 SAB
Hotel Choclat (outside)		
Superdrug (outside)		
WHSmith (outside)		
Ebbisham Centre (by library)	High Street	KT19 BAG
Michael Everett	High Street	KT19 BOP
Tesco Express	Chantilly Way	KT19 BOP
Costcutter	Manor Green Road	KT19 BPA
Ajits Local	Sefton Road	KT19 BPG
Epsom Methodist Church	Ashley Road	KT18 SAQ
Save 'n' Smile	Wells Estate	KT18 TUG
Dorking Road Stores	Dorking Road	KT18 TUG
Corner Shop 4U	Burgh Heath Road	KT17 4UJ
Sainsbury's	Kiss Lane	KT17 1EQ
EWELL / STONELEIGH / CUDDINGTON		
Sainsbury's Local	Cream Road	KT17 1SN
Smiths Mail Shop	12 Ruxley Lane	KT19 0JA
Sainsbury's Local	65 The Broadway	KT17 2HP
Vale Road Post Office	173 Vale Road, Cuddington	KT19 0PN
Bourne Hall	Spring Street, Ewell	KT17 1UF
EPSOM DOWNS		
McCall's	Tattenham Corner	KT18 SQG
ASSTEAD		
Marks and Spencer	The Street	KT21 1AA
McCall's	The Street	KT21 1AW
Word on the Street	The Street	KT21 1AW
Tesco Express	Crabtree's Parade	KT21 1QJ
Gerry's Greengrocers	Barnett Wood Lane	KT21 2DB







The Wimbledon Festive Light Trail

23rd November to 17th December, 5.00pm to last entry 9.00pm

Come along and get into the spirit of Christmas and make the most of the festivities by stepping into a magical world of light, colour and sound, as you explore the grounds of Cannizaro Park adorned with thousands of lights transforming the gardens into an enchanted winter wonderland. An unmissable event to start off the festive season! You cannot beat the magic of Christmas.

Cannizaro House,
West Side
Common, London
SW19 4UE

www.festivelightdisplay.co.uk



Struggling to stay warm this winter?



Come and join us for Warm Wednesdays

10am - 3:30pm

Hot drinks & stay cosy

12 noon - 1:30pm

Hot soup and roll

3:30 - 6pm

Family after-school club

with games, kid's entertainment & evening meal

Plus! One-stop advice café every week. See over for details...



all completely.

FREE

- Simply drop in, no booking required
- Wednesdays from 1st November to 13th March
- Epsom Methodist Church, Ashley Road, KT18 5AQ

