

# Welcome to Year 3





## WHO WE ARE...

The class teachers in Year 3 are:

Miss Anderson and Miss Marriage

The Maths group teacher is: Mrs Mihaylova

The Teaching Assistants in Year 3 are:

Mrs Salam (TA)

Mrs Thompson (SNA)

Mrs Fowler (HLTA)

Mrs McGahan (SNA)

Brilliance  
Equality  
Learning for all  
Inspiration  
Enthusiasm  
Vision  
Every pupil matters

At Wallace Fields  
Junior School we  
***BELIEVE*** that we can

***“Dream more, learn  
more, do more,  
become more”***



## Rewards

Every week we are currently awarding one child from each class with a ‘Star of the Week’ award. We also celebrate their achievements in assembly and a certificate will be sent home to show parents/carers. The Star of the Week award is given to children who demonstrate the school vision. We want every child to believe that they can achieve success in all they do.

In addition to this, we also award:

- Dojos (house points)
- Head Teacher Award
- Monthly BELIEVE award

*Year 3 covers some exciting topics such as:*

**History:** Stone Age, Bronze Age, Iron Age and Romans

**Geography:** mapping, using an atlas, physical and human geography.

**Science:** classifying living things, sound, light, electricity and plants

**Art:** Sketching, pastels, colour mixing, printing, 3D perspective art and mosaics

**Design & Technology:** packaging, fruit salads and 3D night lights

**Personal, Social & Health Education:** wellbeing, bullying, internet safety, stranger danger and roles in the community.

**Sex & Relationship Education:** changes to body, personal space and personal hygiene.

**Faith and Philosophy:** Christianity and Judaism.

**Computing:** coding, touch typing, internet safety, research and word processing.

**PE & Games includes:** Football, netball, rugby, hockey, tennis, rounders, cricket, athletics, dance, gymnastics and fitness.



## Reading Diaries

Children will have been given a reading diary to record any reading that is done at home in front of an adult.

We encourage reading at home and ask that you date and sign each entry. We will give 1 'Dojo point' for reading 3 times a week and 2 extra 'Dojos' for additional reading.

This book is also for any quick questions you may wish to ask and is checked once a week, when the children hand them in on a Thursday morning, however please make sure the children bring them into school every day as passwords for Mathletics, Spelling Shed and Times Tables Rock Stars will be stuck in the front page.

<https://www.wallacefields-jun.surrey.sch.uk/learning/english>

.



### Complex Speed Sounds

#### Consonant sounds

f	l	m	n	r	s	v	z	sh	th	ng
ff	ll	mm	nn	rr	ss	ve	zz	ti		nk
ph	le	mb	kn	wr	se		s	ci		
					c		se			
					ce					

b	c	d	g	h	j	p	qu	t	w	x	y	ch
bb	k	dd	gg		g	pp		tt	wh			tch
	ck				ge							
	ch				dge							

#### Vowel sounds

a	e	i	o	u	ay	ee	igh	ow
	ea				ā-e	y	ī-e	ō-e
					ai	ea	ie	oa
						e	i	o
							y	

oo	oo	ar	or	air	ir	ou	oy	ire	ear	ure
ū-e			oor	are	ur	ow	oi			
ue			ore		er					
ew			aw							
			au							

## Spellings

During the first half term, we will revise the high frequency words and Year 2 curriculum spelling list to reinforce any misconceptions.

We then focus on the complex speed sounds following the Year 3 spelling scheme.

The teaching of spelling will be supported by the online programme 'Spelling Shed' which will be set as weekly homework (which you can complete as 3 x 10 minute slots or a 1 x 30 minute slot.)

<https://www.wallacefields-jun.surrey.sch.uk/learning/english>



## PE and Games

We teach a variety of Games including; Netball, Tennis, Football, Rugby, Hockey, Cricket and Rounders. In PE, we teach Gymnastics, Dance, Fitness and Athletics.

*3A- P.E / Games on Mondays and Tuesdays*

*3M- P.E / Games on Mondays and Tuesdays*

Please can you ensure children have their PE kits in school. As children in Year 3 are still learning to change and take responsibility for their uniform, please practice doing up top-buttons and putting on ties. If there are any children who have earrings, they are responsible for taking them out themselves or advised not to wear them on PE/Games days.

<https://www.wallacefields-jun.surrey.sch.uk/learning/pe-games>

We are lucky to have our expert Sports Coach Joe Butler to teach some of our games lessons.



## Maths

In order to pitch the support at different levels, we will group three ways for maths including; challenge, core and support. The support group has a higher adult to child ratio. For the first few weeks, until we know the children, maths groups will be more fluid. Please do not worry if your child moves groups during the year as they are exposed to the same curriculum.

<https://www.wallacefields-jun.surrey.sch.uk/learning/maths>

## English

Children will be in their classes for English. Teachers will differentiate within the class – setting a variety of challenges. Non-negotiables will be referred to in order to remind children of expectations from Year 2, such as capital letters and full stops.

<https://www.wallacefields-jun.surrey.sch.uk/learning/english>

*For the first few weeks until we know the children, maths groups will be more fluid. Please do not worry if your child moves groups during the year as they are exposed to the same curriculum.*

## Assessment:

We assess children each term to monitor their progress by using summative tests alongside our teacher judgement. The children's progress is monitored extensively throughout each year so we can see their progress from Y3 to Y6. We will be completing baseline assessments in maths, reading and writing.



# Y3 Writing Self-Assessment Checklist



I can write for a range of purposes and audiences.

I can use adverbs and adverbials to make my writing flow.

(When?, How often?) Time – Last night, the cat slept.

(Why?) Reason - The cat slept because he was exhausted after a long day in the garden.

(How?) Manner – The cat slept still.

(Where) Place – The cat slept in front of the fire.

I can use subordinating conjunctions [time, place and cause]

after, when, before, while, so, because, until, since

E.g. When it started raining, I went inside.

I can use co-ordinating conjunctions.

and, but, or, so, yet

I can use appropriate pronouns to avoid repetition.

Mike went outside. Mike Kicked the ball. -> Mike went outside. He kicked the ball.

I can use a range of tenses.

Simple: I ate a sandwich. I eat a sandwich. I will eat a sandwich.

Progressive: I was eating a sandwich. I am eating a sandwich. I will be eating a sandwich.

Perfect: I had eaten a sandwich. I have eaten a sandwich. I will have eaten a sandwich.

I can use expanded noun phrases [ adding two adjectives before the noun or an adjectival phrase after the noun]

The old bearded wizard.

The wizard with the square glasses.

I can group related ideas into paragraphs.

I can use capital letters and full stops correctly.

I can use question marks correctly.

I can use inverted commas for direct speech.

“She’s over there!” announced Mollie.

I can use apostrophes to mark singular or plural possession.

Singular – The girl’s dress.

Plural – The boys’ changing room.

I can use apostrophes for contractions.

couldn’t, doesn’t, we’re, can’t

I can spell some of the Year 3 & 4 words correctly.

Accident, actual, address, answer, appear, arrive, believe, bicycle, breath, breathe, build, busy/business, calendar, caught, centre, century, certain, circle, complete, consider, continue, decide, describe, different, difficult, disappear, early, earth, eight/eighth, enough, exercise, experience, experiment, extreme, famous, favourite, February, forward, fruit, grammar, group, guard, guide, heard, heart, height, history, imagine, increase, important, interest, island, knowledge, learn, length, library, material, medicine, mention, minute, natural, naughty, notice, occasion, often, opposite, ordinary, particular, peculiar, perhaps, popular, position, possess, possible, potatoes, pressure, probably, promise, purpose, quarter, question, recent, regular, reign, remember, sentence, separate, special, straight, strange, strength, suppose, surprise, therefore, though/although, thought, through, various, weight, woman/women.



Non Negotiable	✓ Tick if achieved
Capital letters and full stops to demarcate sentences. <i>I went to the park and it was so much fun.</i>	
Capital letters for proper nouns. <i>Jack went to Spain in July.</i>	
Commas in a list. <i>I ate salad, fish and vegetables.</i>	
Apostrophe for contractions. <i>Can't, won't, shouldn't, haven't, I've,</i>	
Handwriting – finger space between words.	
Homophones such as: <i>there/their/they're, here/hear, quite/quiet, see/sea, bare/bear, one/won, sun/son, to/too/two, be/bee, blue/blew, night/knight</i>	

- Non-negotiables will be referred to in order to remind children of expectations from Year 2, such as capital letters and full stops.

# Meaningful Vocabulary

Jerome the Word Collector

Dojo points for new or interesting words discovered

Greater Depth in writing- must be using deliberate word choices- i.e. clear direct words in non-fiction, effective and meaning-enhancing vocabulary in fiction.

# Time tables

Children will be nationally tested on their times tables up to 12x12 in year 4. To help prepare them for this, we will be practising daily in speedy maths, and in group maths lessons . This will be reinforced by their homework using the interactive programme 'Times Tables Rockstars'.

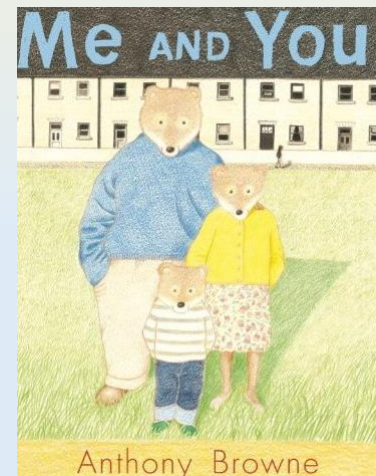
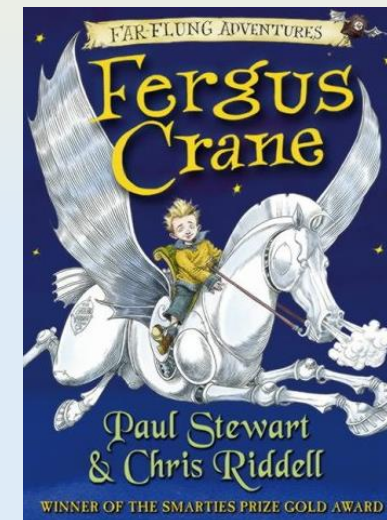
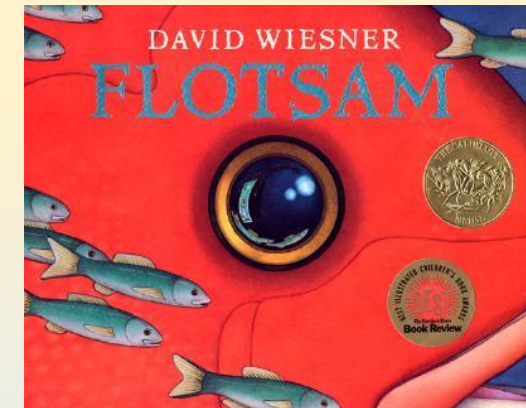
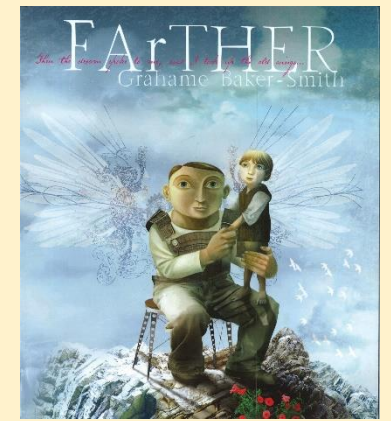
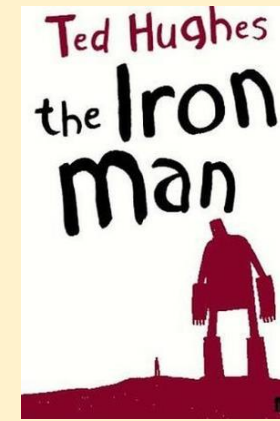
## Reading

Wallace Fields promotes reading for pleasure and understanding. At KS2, a child needs to read the word correctly and build their understanding of the meaning and the context in which it is used.

Once initial assessments have been completed, a colour book band will be given to your child for selecting books in the book corner and library. Please note the colour band will be allocated after a reading assessment so in the meantime please send your child in with a reading book from home.

We teach Guided Comprehension to develop the children's inference skills and enhance their understanding of different texts.

<https://www.wallacefields-jun.surrey.sch.uk/learning/english>





## Homework

Our homework reinforces topics taught that week in English, maths, Science, Art, History or Geography. Our main project homeworks are creating a Body-Box and a Stonehenge research homework.

## Weekly Homeworks

Reading at home at least 3 x per week. This is to be signed by a parent/ carer.

Spelling Shed based on the sounds we are teaching. (10-15 minutes) 3 x per week.

<https://www.spellingshed.com/en-gb>

Times Tables Rockstars (10 minutes) 3 x per week.

<https://ttrockstars.com/>

*We will be giving the children their login details (stuck in the front of their reading records) and training them how to use these programmes in our Computing sessions over the next couple of weeks.*



## Extra Support

Should your child need extra support in their learning, intervention strategies will be put in place.

- These include our Phonics groups
- The Wordshark spelling program
- Focus guided reading sessions
- SNAP Maths
- Additional handwriting practice.
- Athletics, Spelling Shed and Times Tables Rockstars sessions.

Our Special Educational Needs Coordinator, Mrs King, will monitor children's progress within any intervention groups as well as children on the Special Education Needs register. <https://www.wallacefields-jun.surrey.sch.uk/our-school/inclusion>



## Stationery:

- Each child has been their own pencil case with a board pen, pencil rubber, ruler, glue stick and a purple pen.
- Please provide colouring pencils.
- If a child loses any items they will need purchase these at the school stationery shop on a Tuesday or Thursday break time. These are at a reduced cost. Price lists are displayed in classrooms.

## Year 3 School Trips

Butser Ancient Farm: A Stone Age Village

Walk around the block: Geography, mapping skills

Crew Theatre: History, Romans

