



# WLD HIGH SCHOOL BULLETIN



Thursday 23<sup>rd</sup> November 2023

## Headteacher's Message

The bulletin is a day early today as tomorrow in an Inset day following our presentation evening tonight. We very much look forward to welcoming back the families of our outgoing year 11 students and celebration their successes. I would also like to take the opportunity to congratulate and thank the group of 16 students who attended the South Ribble Schools Cross-Country event at Hutton last weekend. As a keen runner myself, I know how difficult it can be to get yourself up on a Saturday morning to run in difficult muddy conditions in the cold weather. I hope you all enjoyed the experience of representing your school, however.

Mrs V Ardern  
Headteacher

## Whole School Messages



### SCHOOL CLOSURE FRIDAY 24<sup>TH</sup> NOVEMBER

Just a reminder that school will be closed tomorrow for INSET Day.

## Important information regarding School ParentPay Accounts

Reminder that from this week the school kitchen have set the lunch account limit to **-£4.80**. This means students will be allowed to go into arrears for a **maximum of 2 meal deals only**.

After this point students will be refused food.

## CHRISTMAS LUNCH - final shout out

Final shout out to book the Christmas Lunch, which will be on the same day as Christmas Jumper Day - **Thursday 7<sup>th</sup> December**. If your child would like a Christmas lunch, please complete the form below by **12noon on Tuesday 28<sup>th</sup> November**.

[Christmas Lunch](#)

## Save the Children Christmas Jumper Day – Thursday 7th December 2023



We will be taking part in the national Christmas jumper day to raise money for the amazing work of Save the Children. For a donation of at least £2, students are welcome to come to school in a festive jumper along with their normal school uniform. Please be rest assured we do not expect parents/carers to go and purchase a Christmas jumper for this event, anything festive will do. We would much prefer the money to go towards our £500 target for Save the Children.



All you need to do to take part in this day is scan the code with your phone camera to give to the pot and it will go straight to Save the Children

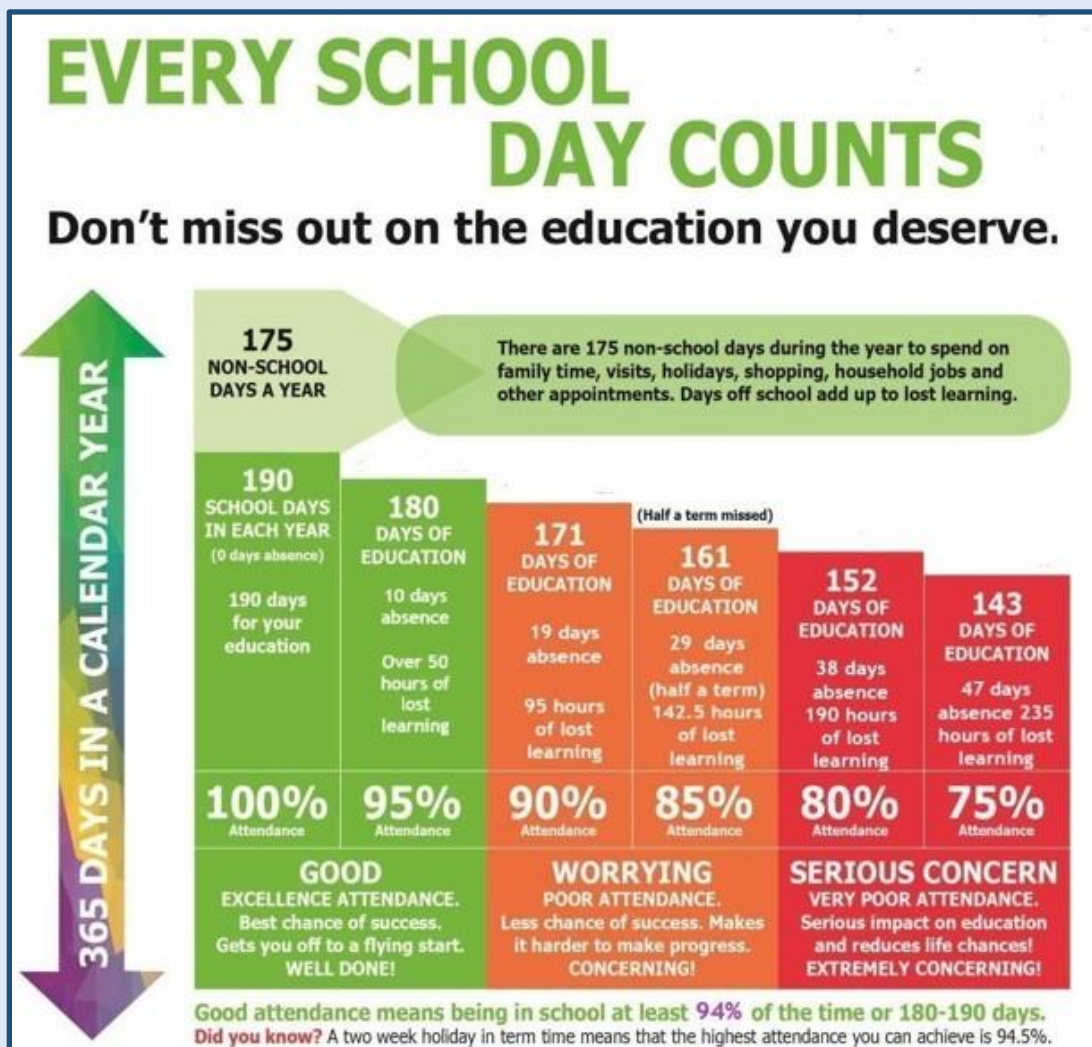
Alternatively, you can visit the JustGiving page directly here:

[Walton-le-Dale Christmas Jumper Day is raising money for Save The Children!](#)

## Whole School Messages

### STUDENT ABSENCE REPORTING

Parents should report any absences or medical appointments only on Classcharts or Schoolcomms **by 9am**. Please ensure that you contact the school on each day of your child's absence. A link to "How to report student absences using Classcharts" can be found on our website.



### Year 11 Progress Evenings and Mock Exams

Parents and carers of our Year 11 students are warmly invited to school on **Thursday 7<sup>th</sup> December (4pm-6.30pm)** to receive the first Year 11 report of the year and have conversations with teachers about how their child is getting on in this important year.

Year 11 students will sit their mock exams when they return to school in January. The mock exam fortnight will run from **Monday 8<sup>th</sup> January to Friday 19<sup>th</sup> January 2024**.

There will then be a second Progress Evening to discuss the mock exam results and revision on **Thursday 29<sup>th</sup> February 2024**.

We look forward to seeing our Year 11 students and parents and carers at these two evenings.

Mrs H Brown  
Assistant Headteacher

## Whole School Messages



# ClearRevise™ REVISION GUIDES

## Year 11

Revision guides are now available on ParentPay for:

- GCSE Computer Science (option)
- GCSE Business Studies (option)
- BTEC Digital Information Technology (core)

£7.20 each

**Please purchase before 4th December at 9am.**

The books will be ordered in bulk after this date and available to collect from Mr Moorcroft before Christmas.

## Whole School Messages

### Match Report - WLD 6 – 0 Balshaws

The year 10 football team won 6-0 at Balshaws! Tom C scored in the first 10 minutes and ended up finishing with 4 goals after coming off towards the end of the game. Brilliant football was played by every member of the squad and we played with great team spirit. George R scored 1 goal through a cross in and buried it bottom left. Alfie W scored a free kick from half way line into top right and created many chances for the team and himself. Anton F cut in from the left to the middle and planted it bottom left again. Kian E, the birthday boy played brilliantly and created space and chances throughout the whole match.

Lorinc S played very well in right back and put his body into every ball that came his way. Overall, the whole team put in 100% and played some brilliant football.

Squad: Alfie W, Tom C, Anton F, Shaun D, Lorinc S, George R, Theo S, Callum W, Kian E, Lewis G, Jack H, Xain A, George T, Tyler W, Ashley B

Written by Alfie W

# Homework

Please be aware that homework will be set on Classcharts.

In order to aid transition for our Year 7 students, we have reduced the number of subjects setting homework for the first term to English, Maths and Science. Of course, when students have assessments, they will be asked to revise for them - regardless of the subject.

For students in Years 8 to 11, the following guidelines will be followed.

	KS3	KS4
	<b>30 mins per subject</b>	<b>1 hour per subject</b>
<b>Weekly</b>	English Maths Science Geography History	English Maths Science Option A Option B Option C Computing
<b>Once every 2 weeks</b>	Music (A) Computing (A) RE (A) Languages – French and/or German	
<b>Every 5 weeks</b>	Technology (or at the end of each rotation)	
<b>Every half-term</b>	Art Drama	

## Homework Support: Monday to Friday in D4 and the Library



### Homework Champions

Homework is an important way of students learning how to study independently and also of consolidating their learning.

- Each week, Mrs Long (DHT) will award an SLT Classcharts badge for the most homework submitted for students in each year group; these students will also receive a 'golden ticket' for the dining room (HALs will give these to students in assembly).
- **Certificates** will be awarded in our awards assemblies for homework, as this shows your dedication to your studies and learning
- Before Christmas, there will be a **reward activity** – off-timetable- for those completing their homework (Miss Rowson will provide more information)
- Each week, Mrs Long will award an **SLT Classcharts badge** for the most homework submitted

The Homework Champions for this week are:

<b>Year 7</b>	Finn R-M (D7) Hugo H (A7) Daniella N (A7)
<b>Year 8</b>	Harry S (D5) Sienna-Mae L (E1) Alexandra D (D4)
<b>Year 9</b>	Caleb T-W (C5) Piotr S (E1)
<b>Year 10</b>	Hollie L (A4) Kevin L (E2)
<b>Year 11</b>	Emily Y (V5) Amy S (A6)

## Attendance Awards

House with Highest Attendance			Challenger		
Form with Highest Attendance	<b>Challenger C2</b>	<b>Apollo A7</b>	<b>Endeavour E3</b>	<b>Voyager V2</b>	<b>Discovery D1</b>
100% Attendance Golden Ticket	Challenger Casey R (C2)	Apollo Layton W (A2)	Endeavour Callum H (E2)	Voyager Braydon A (V2)	Discovery Oliver S (D5)

## Classcharts Awards

House with Most Positives			Apollo		
Form with the most Positives	<b>Challenger C6</b>	<b>Apollo A7</b>	<b>Endeavour E4</b>	<b>Voyager V2</b>	<b>Discovery D1</b>
Kindness Golden Ticket	Liam S (C6)	Fariya J (A7)	Annabelle T (E6)	Ruby C (V1)	Leon C (D1)
Most Positives Golden Ticket	Lilly M (C5)	Poppy-Ella C (A1)	Emmie W (E4)	Neve H (V2)	Kian S (D4)
Most Homework Positives Golden Ticket	Ethan R (C4)	Jay M (A4)	Sienna-Mae L (E1)	Charlotte KR (V6)	Alexandra D (D4)
Most Improved Student	Jude L (C6)	Cole W (A6)	Dillon I (E5)	Emily F (V6)	Nerissa W (D2)

## Rewards

### PSHE Awards for the week

Year 7 PSHE Awards	
A7	Fariya J (A7)
C7	Lexie T (C7)
D7	Angela S (D7)
D8	Jasmine T (D8)
E7	Poppy E (E7) and Amelia M (E7)
D7	Tamzin B (D7)
V7	Manha C (V7)
Year 8 PSHE Awards	
8WDA	Harry S (D5)
8WDS	Ethan R (C4)
8WDP	Noah M (E6)
8WDI	Harry S (A3)
8WDR	James W (V2)
8WDE	Jay M (A4)
Year 9 PSHE Awards	
9WDA	Niamh R (D5)
9WDS	Alfie S (C6)
9WDP	Emily B (C2)
9WDI	Brogan W (E3)
9WDR	Hemin M (V3)
9WDE	Hollie R (C4) Abigail G (A1)
Year 10 PSHE Awards	
10WDA	Summer N (D4)
10WDS	Robyn KM (C3)
10WDP	Taylor W (V6)
10WDI	William G (A1)
10WDR	James W (V2) Amelia M (V2)
10WDE	Alfie W (A5)
Year 11 PSHE Awards	
11WDA	Lewis C (D2)
11WDS	Rosa W (C6)
11WDP	George D E2
11WDI	Lewis VW (A1)
11WDR	Eva W (V3)
11WDE	Robbie P (A2)