

Bullying as a group behaviour

Which part do you play?

If you see bullying happen which role should you take?

The ringleader – Starting and leading the bullying but not always the person ‘doing’ the bullying.

The target - The person who is being bullied.

Assistant(s)-Actively involved in ‘doing’ the bullying.

Reinforcer(s) - Supports the bullying, might laugh or encourage other people to carry on what is going on.

Defender(s) - Stands up for someone being bullied. Knows that bullying is wrong and feels confident enough to do something about it. This might involve talking to an adult in school.

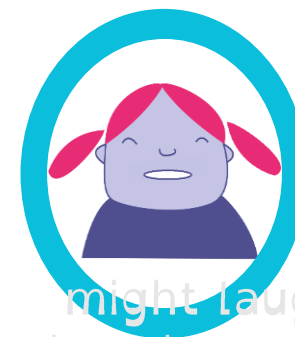
Outsider(s) - Ignores any bullying and doesn't want to get involved.



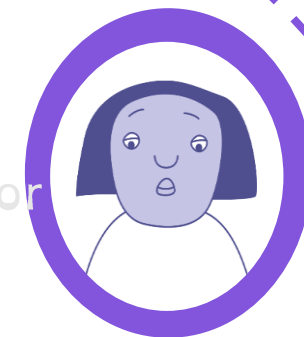
‘Outsider’



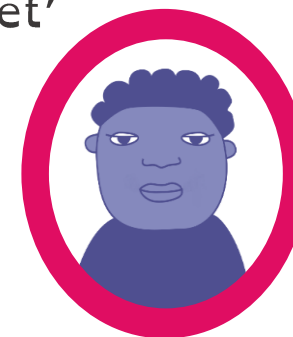
‘Target’



‘Ringleader’



‘Reinforcer’



‘Defender’



‘Assistant’

