



The Wandle Weekly

TOGETHER EVERYONE ACHIEVES MORE

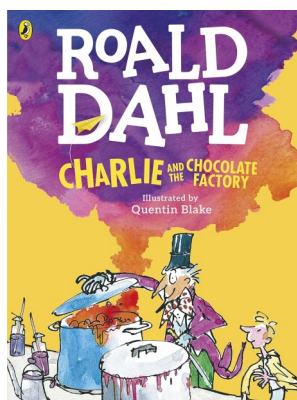


Lisa's Inspirational Quote

"Don't cry because it's over, smile because it happened."

– Dr. Seuss

Favourite Book: Charlie & The Chocolate Factory



Mr Willy Wonka is the most extraordinary chocolate maker in the world. And do you know who Charlie is? Charlie Bucket is the hero. The other children in this book are nasty little beasts! Clutching their Golden Tickets, they arrive at Wonka's chocolate factory. Please don't wander off. Mr Wonka wouldn't like to lose any of you at this stage of the proceedings ...

Mathletics

TOP 3 THIS WEEK

1st—Nicholas—5742

2nd—Kayden—1454

3rd—Owen—1080

Primary Mathlete:
Harrison

Where to Go: Christmas Markets on Southbank

Hop off of the tube at either Waterloo Station or Westminster bridge and start at the Southbank Centre Market. Then you can meander your way down the river passing some great sites such as the Southbank skate park, the National theatre, numerous pubs and the Globe theatre before finally ending up at Borough for Christmas by the river market, Borough market, Hays Galleria, Tower Bridge and even HMS Belfast!



Christmas Markets on the Southbank London
and all the places you can find them
likelovelondon.com



This week I would like to say a big thank you to you all. We not only had a great response to the parent/carer survey, but we also had a fabulous turn out to parent/carers evening.

Without all your support, supporting the pupils at Wandle would be so much harder. So 'Thank You'.

Miss Harris





The Wandle Weekly

TOGETHER EVERYONE ACHIEVES MORE

Here is just a small selection of the Parent / Carer comments from the recent Survey. The positive feedback was amazing—thank you

Since my son started here he has made so much progress in ALL areas which I never thought I would see. I am so proud of my son and Wandle Valley's fantastic communication too.

Great parent / teacher communication.

As the school is a specialist SEMH school, the behaviours of the children aren't always good, however they are managed well and our child feels safe and able to talk about any issues to both us and school. The school has managed to turn our child's opinion of teachers and school to a much more positive one as they had such a negative experience at mainstream school. The variety of enrichment activities is really good, which our child thoroughly enjoys. The staff there have quickly picked up on what works for our child and what doesn't, understanding the need for sensory input.

My child is so much calmer and happier about school and this is extending to home too. He used to be extremely anxious at school and was constantly getting into trouble at his previous school just didn't grasp how his diagnosis affects his learning and sensory perception, but he is 100% happier with school now and is a completely different child.

I think the school is amazing so far. My son had been bouncing around mainstream for a no. of years. He is settled at Wandle for now and its been 2 years. I feel the teachers and the Head especially do an outstanding job. I am very grateful we found Wandle Valley Academy.

Wandle Valley Academy is a great school. The reason it's a great school is because of their understanding of helping pupils with special needs including emotional support and learning. I've met my child teachers and they are fantastic with supporting my son in all needs. I receive updates on via email phone calls. I love that they support charities with funding. When my child struggles with day to day living they are always there to support him to do the right thing.

Our son is loving being at WVA. For the first time he wants to come to school and learn. We are so pleased to be part of this school.

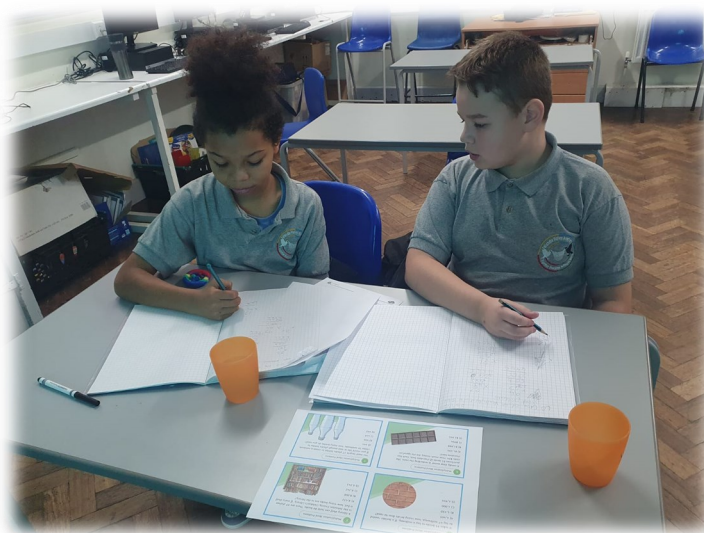
Since starting Wandle, my child has turned into a totally different child. They are supported 100% at this school. The teachers listen to me and not only take note but deal with concerns I may have at school. Personally, I refer to them as superheroes, I honestly thought my child would end up written off as a 'bad' child but now, my child enjoys going to school. The staff at Wandle, saved my child's school life. I believe fully in this school and support them 100%.



The Wandle Weekly

TOGETHER EVERYONE ACHIEVES MORE

Year 7s working together to apply their multiplication knowledge to solve word problems



Outdoor activities in the sun



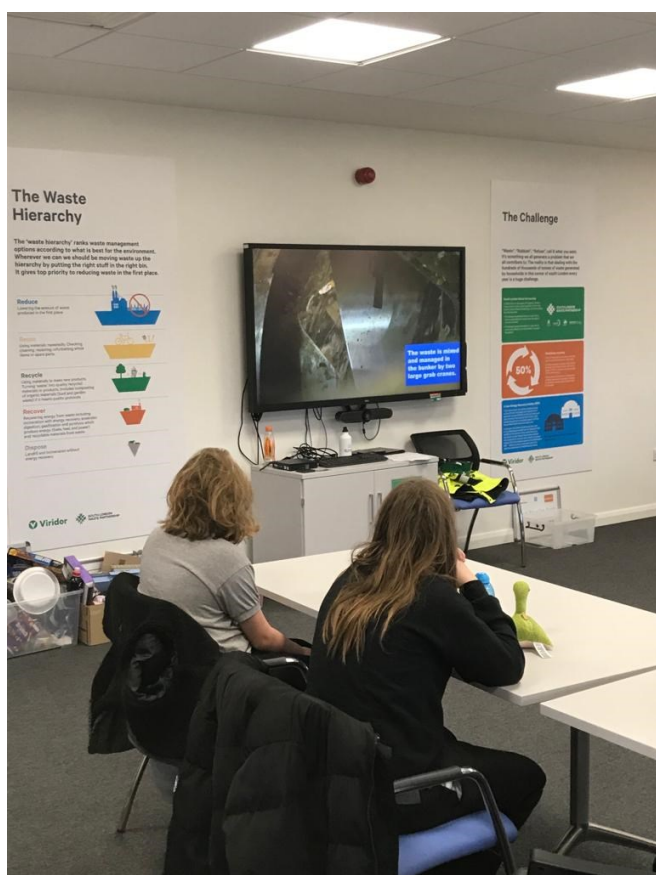
Amazing Art—portrait drawn by our Art Teacher of a Yr7 pupil

The Wandle Weekly

TOGETHER EVERYONE ACHIEVES MORE

School Visit—Tuesday 22 November

On Tuesday, pupils in year 8 had the exciting opportunity to have



a tour of the Beddington Energy Recovery Facility, run by Viridor.

Pupils learnt all about the reuse, recycle and recovery process, that helps to limit the landfill we produce and actually creates energy for our homes.





The Wandle Weekly

TOGETHER EVERYONE ACHIEVES MORE

Wandle Therapy Team Messages

It's a beautiful day!

We recently made sun-catchers in Girls Group, having loads of fun along the way:



This morning was a stunning opportunity to showcase our work with you as parents & carers:



It has been a whirlwind time at Wandle recently, and so we thought we would take a moment today to pause and reflect on the term. As always, if you'd like to get in touch with me to discuss any speech and language therapy for out-of-borough students, feel free to email me at: cduplessis@wandlevalleyacademy.org.uk

Warm regards,
Chevonne (SaLT | Words First Ltd)