



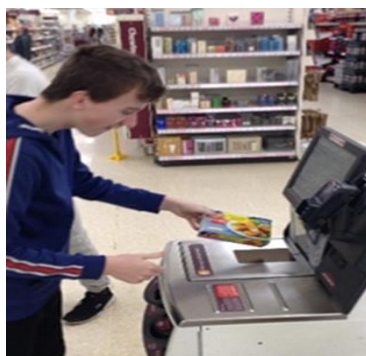
We believe in and value every individual and what they can aspire to. We will inspire them to do this by enhancing learning and encouraging everyone to achieve together.



Warmley Park College

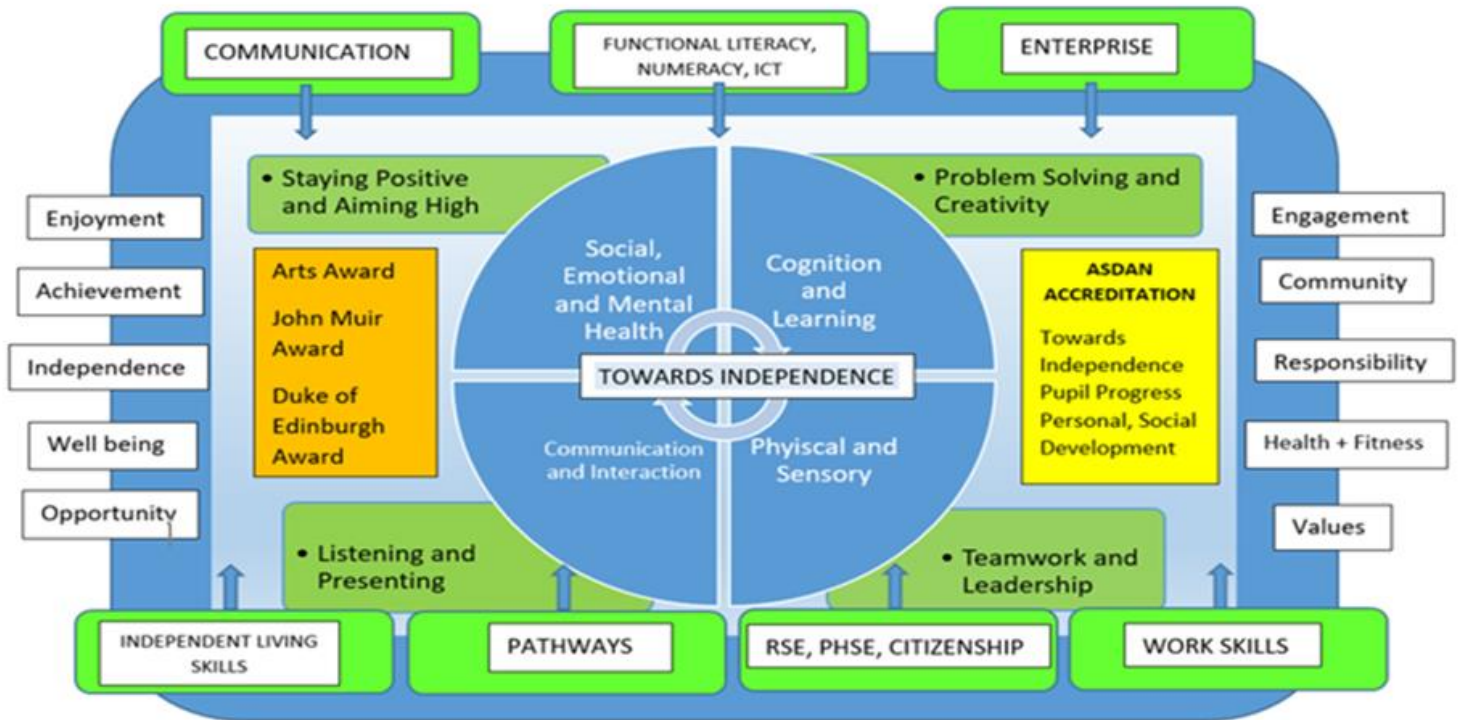
Warmley Park College is a modern, purpose built facility for 16-19 year old learners, attached to Warmley Park School. The College offers provision for students aged 16-19 with a range of learning difficulties. Learning focuses on preparation for the future and moving into adulthood. We aim to meet students' social and emotional needs to build resilience and prepare them for the next stage in their lives.

The college building is secure, on a single level and fully accessible with ceiling hoists in teaching rooms and bathrooms. The focus on a practical curriculum is supported by a dedicated design and technology room, a food technology room and a polytunnel in a developed horticulture area.



Students are encouraged and supported in making decisions about their future, increasing their personal independence and developing the skills needed to reach their full potential.

**ASPIRE, BELIEVE,
ENHANCE, ACHIEVE**



The Warmley Park #MOVINGFORWARD Curriculum Model

The Post-16 curriculum is designed to broaden and develop skills for life and work. It promotes a hands on, meaningful approach to the development of functional skills in Maths, English, ICT and PSHE. We follow an Entry level curriculum accredited through ASDAN. In addition, students are given the opportunity to pursue their interests through Pathways and gain recognition for their work through awards e.g. Arts Award, John Muir Award, Duke of Edinburgh Award. Students can choose to follow two pathways from a choice of Art and Design, Sport Leadership and Fitness, Drama, Hospitality and Retail or Horticulture.

Students are able to build on and broaden their skills in the wider community through a range of opportunities including travel training, leisure activities, work experience and volunteering activities. In addition, there is a strong emphasis on developing physical fitness to enhance fitness and wellbeing.



DO COLLEGE STUDENTS WEAR A UNIFORM?

Making choices is an important part of preparing for adulthood. For this reason, we do not ask College students to wear uniform. Instead we encourage them to choose what they would like to wear on a daily basis, taking into consideration the weather and activities planned for the day.



EXAMPLE OF A COLLEGE TIMETABLE

	 9:00	 -  9.30 - 11.45	 11:45	 12:30	 1.30	 3.00
 Monday	 Morning tasks	 Bristol Bears	 Assembly	 Lunch	 Bristol Bears	 Home
 Tuesday	 Morning tasks	 Enterprise	 Reading	 Lunch	 Sport Leadership	 Home
 Wednesday	 Morning tasks	 Catering	 PE Games	 Lunch	 Drama	 Home
 Thursday	 Morning tasks	 PHSE / Citizenship	 Reading	 Lunch	 Horticulture	 Home
 Friday	 Morning tasks	 World of Work	 Communication games	 Lunch	 Communication	 Home

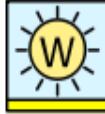
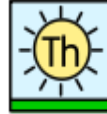










Lunches in the College

Students can choose to buy a two course cooked meal or eat a packed lunch from home. Students prepare the cooked lunches in College. We tend to choose recipes that are easily replicated at home. Tutor groups take turns to cater the lunch two days a week and the Hospitality and Retail pathway group take responsibility on two days a week. Currently, we ask students to bring in a packed lunch on the day we are working with Bristol Bears.

Lunches cost the same as a school meal in main school and students in receipt of Free School Meals will continue to receive this service.

EXAMPLE OF COLLEGE MENU

 Monday	 Tuesday	 Wednesday	 Thursday	 Friday
 Sandwiches	 Curry	 Chicken pasta salad	 Pizza + salad	 Quiche + new potatoes
 fruit, veg, sticks, craps	 Jacket potato, Cheese, Beans or tuna	 Jacket potato, Cheese, Beans or tuna	 Jacket potato, Cheese, Beans or tuna	 Jacket potato, Cheese, Beans or tuna
 Yoghurt, Biscuit	 Chocolate brownie	 Eton Mess	 Fruit Salad	 Ice cream / Ice lolly



LIFE AND LIVING SKILLS ARE AN IMPORTANT PART OF THE CURRICULUM





FREQUENTLY ASKED QUESTIONS

How do I apply for a place at Warmley Park College?

Applications need to be made via South Gloucestershire Local Authority through the Annual Review process. If you are not a South Glos resident, you need to ask the 0-25 Team in your Local Authority to liaise with South Glos LA. We cannot accept applications directly to the college.

Will my son/ daughter get transport to and from college?

Applications for transport must be made in advance of joining Warmley Park College via the local authority. Warmley Park does not have any input into this process and cannot influence outcomes.

How long can my son/ daughter stay at Warmley Park College?

Our Post 16 course lasts three years, but students are free to move on after one or two years if this is in their best interests e.g. to transition to a mainstream college.

Will Warmley Park College help my son/daughter in finding a suitable provision Post 19?

Preparing for the future is a fundamental element of our provision. We work closely with local colleges and providers to ensure our students are well informed about what they can access Post 19 and support them in working out what best suit their needs.

CONTACT US:

Warmley Park School and College
Tower Road North
Bristol
BS30 8XL

Telephone: 01454 867272

Email:

warmley@warmleyparkschool.org.uk

Web:

<https://www.warmleyparkschool.org.uk/>

Follow us on **Twitter:**

@WPSCollege



USEFUL CONTACTS

Education, Health and Care plan coordination team, South Gloucestershire Local Authority

Telephone: 01454 865137 (Duty Line)

Email: 0-25BusinessSupport@southglos.gov.uk

How to apply for school or college travel assistance: Search South Glos travel to school on council website and download the application form. **Hyper link:** [Applying for College Travel Assistance](#)