



### Secondary Department News

We have done it again. Here is proof that the pupils are living up to the tag line of 'Independence in Everything'.



Well done Ava, you have adjusted to your new wheelchair very quickly. You are able to navigate around the school with a high degree of independence. Next steps we will work on transitioning to places around school totally independently!

### Mind Boggling Maths!!

The pupils in Thyme class have been focused on their numeracy work recently. There has been some very independent work to solve the problem either in their heads or by using base 10 cubes. Fantastic!!



### Term Dates 21/22

Term 6: 07.06.21 – 21.07.21

### Inset Dates

Thursday 21<sup>st</sup> July

### Term Dates 22/23

Term 1: 01.09.22 – 21.10.22

Term 2: 31.10.22 – 16.12.22

Term 3: 03.01.23 – 10.02.23

Term 4: 20.02.23 – 31.03.23

Term 5: 17.04.23 – 26.05.23

Term 6: 05.06.23 – 21.07.23

### Inset Dates 22/23

01.09.22

02.09.22

20.02.23

02.05.23

21.07.23



### **The Great Outdoors!**

Two of our outdoor experts from Lavender have been out in the Orchard again. Whether we are hunting for bugs or digging beds over..... there is always something to do! We also had 'mixer joy' today, as our neighbours work on their house whilst we tend the garden!



<https://twitter.com/warmleypkschool/status/1529772223694786560?s=20&t=BtnVtUVkwnM9MwBuH76KNg>

**SUMMER'S  
HERE!**



### Jubilee Celebrations



Well done Liam and Dylan for some superb cake making and for your independence in following the recipe. Delicious!!



### School Games

Lavender pupils have been in training for an upcoming Regatta in Bristol harbour which will be part of the Bristol wide School Games. Pupils have a few more weeks to hone their skills before deciding whether to enter the canoeing, rowing or sailing events. Good luck!







## News from Shaun

Hello Families and Friends,

A bit about Winston's Wish. Winston's Wish were the UK's first childhood bereavement charity and have been supporting grieving children and young people since 1992. They continue to lead the way in providing specialist child bereavement support services across the UK. Winston's Wish provides emotional and practical bereavement support to children, young people and those who care for them. Their expert teams offer one off and ongoing bereavement support, and they also provide online resources, specialist publications and training. Winston's Wish have given timely and bespoke support to children and their families at Warmley Park School who have experienced the loss of a loved one. Do come along to this walk if you can.



# MEMORY MAKERS' WALK

Support Winston's Wish by taking part in the Memory Makers' Walk, a 3km family-friendly sponsored walk through the enchanting Leigh Woods. The story of Mark Lemon's *The Magical Wood* will be acted out along the way, bringing to life this story about loss, friendship and hope.

**Sunday 17 July 2022**  
**10am – 3pm**  
**Leigh Court, Bristol**

A unique occasion for family and friends to come together to cherish memories of loved ones who have died, while offering the space to create new memories on a magical trail full of wonder and hope.

Registration fee: £10 per adult,  
£5 for 10-18 yr olds, free for under-10s

[winstonswish/memory-makers-walk](https://winstonswish/memory-makers-walk)



**WINSTON'S WISH** **30 YEARS**  
Giving hope to grieving children

FRP  
FUNDRAISING  
REGULATOR  
Winston's Wish is a Registered Charity (England and Wales) 1061206 (Scotland) SC047610

**Shaun Payne**

**Lead Professional for Family Support**



**WEDNESDAY 22 JUNE 5PM-7PM**  
**WARMLEY PARK COLLEGE OPEN EVENING AND TRANSITION**  
**EVENT**  
**ALL WELCOME**



Are you curious as to what happens at Warmley Park College? Then come and visit and find out. It doesn't matter how old your young person is - it's never too early to start looking round and understanding what is on offer. On **Wednesday 22 June between 5pm and 7pm**, we will be hosting an open evening where you can tour the college and find out about the curriculum.

In addition, we have a number of other organisations attending who can support you in finding out what is available for young people when they finish at nineteen. So far, we have had confirmation of attendance from the 0-25 SEND team, the Travel Team, the Preparation for Adulthood Team, City of Bristol College, SGS College and Bath College, with lots more organisations still to confirm.

**Marian Lovell**  
**Head of College**



## Mental Health and Wellbeing Support

South Glos currently have a mental health and wellbeing session open to parents and carers; **Introduction to children and young people's mental health and emotional wellbeing.**

The session covers a range of aspects linked to mental health, including spotting early warning signs, supporting young people and Action for Happiness. The session also looks at self-care for parents and carers.

To find further information on the session and book please click on the links below. I'd recommend booking early as there are only 20 places available for each session.

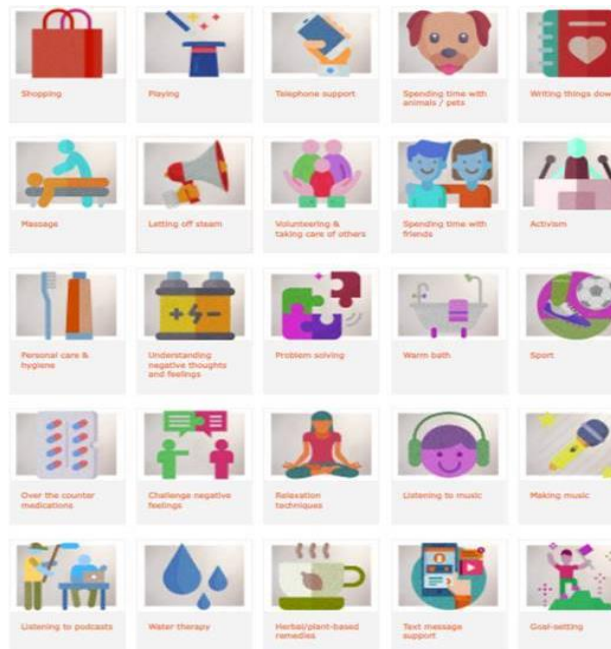
### Children and Young People Mental Health Awareness – Parents and Carers Session

Friday 17 June (10.00 – 11.30) - [View Details](#) | [South Gloucestershire CPD Online \(southglos.gov.uk\)](#)

Tuesday 6 December (19.30-21.00) - [View Details](#) | [South Gloucestershire CPD Online \(southglos.gov.uk\)](#)

**(If parents and carers do not find this link assessable please direct them to [publicHealthTraining@southglos.gov.uk](mailto:publicHealthTraining@southglos.gov.uk) to book)**

For more ideas on self care for young people please visit [Self Care, Anxiety, Depression, Coping Strategies | On My Mind | Anna Freud Centre](#) and scroll down to the bottom of the page where you will find lots of ideas and further information when you click on the images.



**Ellie Goodson**  
**Deputy Head**