

Special Educational Needs (SEN) information report

September 2025

Next review December 2026

Our Mission Statement

‘Believe, Belong, Be the Best that
you can Be’

*"Whatever you do in word or deed, do
everything in the name of the Lord."*

Colossians 3:17

Contents

Contents.....	3
1. What types of SEN does the school provide for?.....	4
2. Which staff will support my child, and what training have they had?.....	4
3. What should I do if I think my child has SEN?.....	6
4. How will the school know if my child needs SEN support?.....	6
5. How will the school measure my child's progress?.....	7
6. How will I be involved in decisions made about my child's education?.....	7
7. How will my child be involved in decisions made about their education?.....	8
8. How will the school adapt its teaching for my child?.....	8
9. How will the school evaluate whether the support in place is helping my child?.....	9
10. How will the school resources be secured for my child?.....	10
11. How will the school make sure my child is included in activities alongside pupils who don't have SEN?...	10
12. How does the school make sure the admissions process is fair for pupils with SEN or a disability?.....	10
13. How does the school support pupils with disabilities?.....	11
14. How will the school support my child's mental health and emotional and social development?.....	11
15. What support will be available for my child as they transition between classes or settings or in preparing for adulthood?.....	11
16. What support is in place for looked-after and previously looked-after children with SEN?.....	12
17. What should I do if I have a complaint about my child's SEN support?.....	12
18. What support is available for me and my family?.....	13
19. Glossary.....	13

Dear parents and carers,

The aim of this information report is to explain how we implement our SEND policy. In other words, we want to show you how special educational needs support works in our school.

If you want to know more about our arrangements for SEND, read our SEND policy.

You can find it on our website <https://wartonstpauls.co.uk/key-information/policies#tab-8434>

Note: If there are any terms we've used in this information report that you're unsure of, you can look them up in the Glossary at the end of the report.

1. What types of SEN does the school provide for?

Our school provides for pupils with the following needs:

AREA OF NEED	CONDITION
Communication and interaction	Autism spectrum disorder (ASD)
	Speech and language difficulties
Cognition and learning	Specific learning difficulties, including dyslexia, dyspraxia, dyscalculia
	Moderate learning difficulties
	Severe learning difficulties
Social, emotional and mental health	Attention deficit hyperactivity disorder (ADHD)
	Attention deficit disorder (ADD)
Sensory and/or physical	Hearing impairments
	Visual impairment
	Multi-sensory impairment
	Physical impairment

2. Which staff will support my child, and what training have they had?

Our special educational needs co-ordinator, or SENCO

Our SENCO is Katie Fisher

She is a qualified teacher and teaches Reception. She is working towards achieving NPQ SENCO (September 2026).

Class/subject teachers

All of our teachers receive in-house SEN training, and are supported by the SENCO to meet the needs of pupils who have SEN.

Teaching assistants (TAs)

We have a team of TAs who are trained to deliver SEN provision. Our teaching assistants are trained to deliver interventions.

External agencies and experts

Sometimes we need extra help to offer our pupils the support they need. Whenever necessary we will work with external support services to meet the needs of our pupils with SEN and to support their families. These include:

- Speech and language therapists
- Educational psychologists
- Occupational therapists
- GPs or paediatricians
- School nurses
- Child and adolescent mental health services (CAMHS)
- Education welfare officers
- Social services and other local authority (LA)-provided support services
- Voluntary sector organisations

3. What should I do if I think my child has SEN?

Tell us about your concerns

We will invite you to a meeting to discuss them

We will decide whether your child needs SEN support

If you think your child might have SEN, the first person you should tell is your child's teacher.

They will pass the message on to our SENCO, Katie Fisher, who will be in touch to discuss your concerns.

You can also contact the SENCO directly using wspoffice@cidari.co.uk

We will meet with you to discuss your concerns and try to get a better understanding of what your child's strengths and difficulties are.

Together we will decide what outcomes to seek for your child and agree on next steps.

We will make a note of what's been discussed and add this to your child's record. You will also be given a copy of this.

If we decide that your child needs SEN support, we will formally notify you and your child will be added to the school's SEND register.

4. How will the school know if my child needs SEN support?

All our class teachers are aware of SEN and are on the lookout for any pupils who aren't making the expected level of progress in their schoolwork or socially.

If the teacher notices that a pupil is falling behind, they try to find out if the pupil has any gaps in their learning. If they can find a gap, they will give the pupil extra support to try to fill it. Pupils who don't have SEN usually make progress quickly once the gap in their learning has been filled.

If the pupil is still struggling to make the expected progress, the teacher will talk to the SENCO, and will contact you to discuss the possibility that your child has SEN.

The SENCO will observe the pupil in the classroom and in the playground to see what their strengths and difficulties are. They will have discussions with your child's teacher/s, to see if there have been any issues with, or changes in, their progress, attainment or behaviour. They will also compare your child's progress and development with their peers and available national data.

The SENCO will ask for your opinion and speak to your child to get their input as well. They may also, where appropriate, ask for the opinion of external experts such as a speech and language therapist, an educational psychologist, or a paediatrician.

Based on all of this information, the SENCO will decide whether your child needs SEN support. You will be told the outcome of the decision in writing.

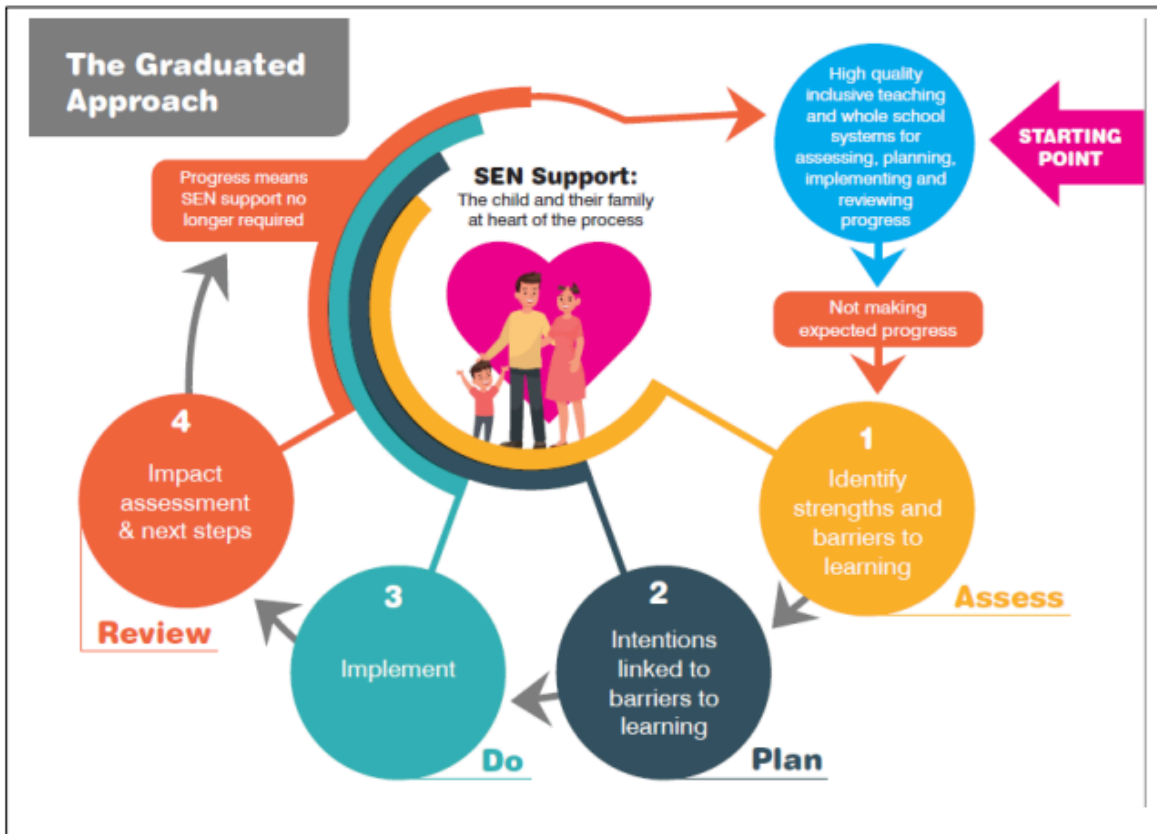
If your child does need SEN support, their name will be added to the school's SEND register, and the SENCO will work with you to create a SEN support plan for them.

5. How will the school measure my child's progress?

We will follow the 'graduated approach' to meeting your child's SEN needs.

The graduated approach is a 4-part cycle of **assess, plan, do, review**.





As a part of the planning stage of the graduated approach, we will set outcomes that we want to see your child achieve.

Whenever we run an intervention with your child, we will assess them before the intervention begins. This is known as a 'baseline assessment'. We do this so we can see how much impact the intervention has on your child's progress.

We will track your child's progress towards the outcomes we set over time and improve our offer as we learn what your child responds to best.

This process will be continual. If the review shows a pupil has made progress, they may no longer need the additional provision made through SEN support. For others, the cycle will continue and the school's targets, strategies and provisions will be revisited and refined.

6. How will I be involved in decisions made about my child's education?

We will provide termly reports on your child's progress.

Your child's class teacher will meet you termly to:

- Set clear outcomes for your child's progress
- Review progress towards those outcomes
- Discuss the support we will put in place to help your child make that progress
- Identify what we will do, what we will ask you to do, and what we will ask your child to do

The SENCO may also attend these meetings to provide extra support.

We know that you're the expert when it comes to your child's needs and aspirations. So we want to make sure you have a full understanding of how we're trying to meet your child's needs, so that you can provide insight into what you think would work best for your child.

We also want to hear from you as much as possible so that we can build a better picture of how the SEN support we are providing is impacting your child outside of school.

If your child's needs or aspirations change at any time, please let us know right away so we can keep our provision as relevant as possible.

After any discussion we will make a record of any outcomes, actions and support that have been agreed. This record will be shared with all relevant staff, and you will be given a copy.

If you have concerns that arise between these meetings, please contact your child's class teacher. This can be done face to face at the classroom door or through the school office (01772 632364 or wspoffice@cidari.co.uk).

7. How will my child be involved in decisions made about their education?

Pupil voice is of great importance and we aim to ensure that children are involved in every step of their learning. Children who are capable of forming views, are encouraged to share their opinion on what they are doing well in school and what they would like more support with. Class teams build close, positive relationships with the children in their class and this supports the process of involving the children in setting and reviewing their own targets. The level of involvement will depend on your child's age and level of competence. We recognise that no two children are the same, so we will decide on a case-by-case basis, with your input.

We may seek your child's views by asking them to:

- Attend meetings to discuss their progress and outcomes
- Prepare a presentation, written statement, video, drawing, etc.
- Discuss their views with a member of staff who can act as a representative during the meeting
- Complete a survey
- Help to complete their pupil provision passport

8. How will the school adapt its teaching for my child?

High-quality teaching is our first step in responding to your child's needs. We will make sure that your child has access to a broad and balanced curriculum in every year they are at our school.

At Warton St. Paul's we take a child centred approach where we look to meet the needs of individual children where we can. We adapt our curriculum to meet the needs of the children in the class, this might include providing more support, changing the provision in class, or adapting the curriculum for individual needs.

Other adaptations might include:

- Differentiating our curriculum to make sure all pupils are able to access it, for example, by grouping, 1-to-1 work, adapting the teaching style or content of the lesson, etc.
- Differentiating our teaching, for example, giving longer processing times, pre-teaching of key vocabulary, reading instructions aloud, etc.
- Adapting our resources and staffing
- Using recommended aids, such as laptops, coloured overlays, visual timetables, larger font, etc.
- Teaching assistants will support pupils in small groups or 1:1

We may also provide the following interventions:

AREA OF NEED	CONDITION	HOW WE SUPPORT THESE PUPILS
Communication and interaction	Autism spectrum disorder (ASD)	Visual timetables Social stories Sensory room
	Speech and language difficulties	Speech and language therapy
Cognition and learning	Specific learning difficulties, including dyslexia, dyspraxia and dyscalculia	Writing slope
	Moderate learning difficulties	
	Severe learning difficulties	
Social, emotional and mental health	ADHD, ADD	Quiet workstation
	Adverse childhood experiences and/or mental health issues	Nurture groups
Sensory and/or physical	Hearing impairment	
	Visual impairment	Limiting classroom displays
	Multi-sensory impairment	
	Physical impairment	

For additional information about how we adapt to meet the needs of all children, please see our local offer/accessibility plan - <https://wartonstpauls.co.uk/key-information/policies#tab-8435>

Your child's teacher is responsible and accountable for the progress and development of all the pupils in their class.

9. How will the school evaluate whether the support in place is helping my child?

We will evaluate the effectiveness of provision for your child by:

- Reviewing their progress towards their goals each term
- Reviewing the impact of interventions after each half term

- Using pupil questionnaires
- Monitoring by the SENCO
- Using provision maps to measure progress
- Holding an annual review (if they have an education, health and care (EHC) plan)

10. How will the school resources be secured for my child?

It may be that your child's needs mean we need to secure:

- Extra equipment or facilities
- More teaching assistant hours
- Further training for our staff
- External specialist expertise

If that's the case, we will consult with external agencies to get recommendations on what will best help your child access their learning.

The school will cover up to £6,000 of any necessary costs. If funding is needed beyond this, we will seek it from our local authority.

11. How will the school make sure my child is included in activities alongside pupils who don't have SEN?

All of our extra-curricular activities and school visits are available to all our pupils, including our before and after-school clubs. We will make reasonable adaptations to these clubs where we can to meet the needs of our children.

All pupils are encouraged to go on our school trips, including our residential trips.

All pupils are encouraged to take part in sports day, class assemblies, theme days, productions and other additional activities in the school day.

No pupil is ever excluded from taking part in these activities because of their SEN or disability and we will make whatever reasonable adjustments are needed to make sure they can be included.

12. How does the school make sure the admissions process is fair for pupils with SEN or a disability?

Please see the admissions policy for more information - <https://wartonstpauls.co.uk/key-information/policies#tab-8435>

13. How does the school support pupils with disabilities?

At Warton St. Paul's we try to meet the needs of all of our pupils and where necessary we will make reasonable adjustments to support this.

Please see our Accessibility Policy and Local Offer for more information about the school building and support we are able to provide for pupils with disabilities - <https://wartonstpauls.co.uk/key-information/policies#tab-8435>

14. How will the school support my child's mental health, and emotional and social development?

At Warton St. Paul's we have a mental health lead who, along with the SENDCO, provides support for children in all areas of mental health.

We also provide support for pupils to progress in their emotional and social development in the following ways:

- Pupils with SEN are encouraged to be part of the school council
- We provide extra pastoral support for listening to the views of pupils with SEN by seeking their pupil voice during work on school and curriculum improvement
- We run a nurture clubs for pupils who need extra support with social or emotional development
- We have a 'zero tolerance' approach to bullying. For more information please see the Anti bullying policy - <https://wartonstpauls.co.uk/key-information/policies#tab-8435>
- We follow 'My Happy Mind' scheme of learning developed by the NHS for PSHE and areas of mental health, and social and emotional development are learnt about in each class in school
- We work with external agencies such as CAMHS when we identify children who might need more specialised support

15. What support will be available for my child as they transition between classes or settings, or in preparing for adulthood?

Between years

To help pupils with SEN be prepared for a new school year we:

- Ask both the current teacher and the next year's teacher to attend a final meeting of the year when the pupil's SEN is discussed
- Schedule lessons with the incoming teacher towards the end of the summer term
- Teachers work collaboratively to review and create a new provision plan and IPP in preparation for the next school year

Before starting school

When your child is starting at Warton St. Paul's the SENDCO and class teacher will meet with parents and preschool teachers to ensure a smooth transition. Information about your child's needs and usual routines will be shared so that school can replicate this.

Your child will also be offered more settling sessions in the summer term before starting school. SENDCO and class teacher will visit your child in their preschool setting and you will also be offered a home visit.

Between schools

When your child is moving on from our school, we will ask you and your child what information you want us to share with the new setting.

Between phases

The SENCO of the new school or secondary school will come into our school for a meeting with our SENCO. They will discuss the needs of all the children who are receiving SEN support.

Pupils will be prepared for the transition by:

- Practising with a secondary school timetable
- Learning how to get organised independently
- Plugging any gaps in knowledge
- Transition/settling in sessions at new setting

16. What support is in place for looked-after and previously looked-after children with SEN?

Mrs Hodgkinson (headteacher and designated teacher for LAC) will work with, our SENCO, to make sure that all teachers understand how a looked-after or previously looked-after pupil's circumstances and their SEN might interact, and what the implications are for teaching and learning.

Children who are looked-after or previously looked-after will be supported much in the same way as any other child who has SEN. However, looked-after pupils will also have a personal education plan (PEP). We will make sure that the PEP and any SEN support plans or EHC plans are consistent and complement one another.

17. What should I do if I have a complaint about my child's SEN support?

Complaints about SEN provision in our school should be made to the class teacher in the first instance. They will then be referred to the school's complaints policy. Please see the complaints policy - <https://wartonstpauls.co.uk/key-information/policies>

To see a full explanation of suitable avenues for complaint, see pages 246 and 247 of the [SEND Code of Practice](#).

If you feel that our school has discriminated against your child because of their SEN, you have the right to make a discrimination claim to the first-tier SEND tribunal. To find out how to make such a claim, you should visit: <https://www.gov.uk/complain-about-school/disability-discrimination>

You can make a claim about alleged discrimination regarding:

- Admission
- Exclusion
- Provision of education and associated services
- Making reasonable adjustments, including the provision of auxiliary aids and services

Before going to a SEND tribunal, you can go through processes called disagreement resolution or mediation, where you try to resolve your disagreement before it reaches the tribunal.

18. What support is available for me and my family?

If you have questions about SEN, or are struggling to cope, please get in touch to let us know. We want to support you, your child and your family.

To see what support is available to you locally, have a look at Lancashire County Council's local offer. Lancashire County Council publishes information about the local offer on their website:

<https://www.lancashire.gov.uk/children-education-families/special-educational-needs-and-disabilities/>

Our local special educational needs and disabilities information, advice and support (SENDIAS) services are:

<https://lancssendias.org.uk/>

National charities that offer information and support to families of children with SEN are:

- [IPSEA](#)
- [SEND family support](#)
- [NSPCC](#)
- [Family Action](#)
- [Special Needs Jungle](#)

19. Glossary

- **Access arrangements** – special arrangements to allow pupils with SEN to access assessments or exams
- **Annual review** – an annual meeting to review the provision in a pupil's EHC plan
- **Area of need** – the 4 areas of need describe different types of needs a pupil with SEN can have. The 4 areas are communication and interaction; cognition and learning; physical and/or sensory; and social, emotional and mental health needs
- **CAMHS** – child and adolescent mental health services
- **Differentiation** – When teachers adapt how they teach in response to a pupil's needs
- **EHC needs assessment** – the needs assessment is the first step on the way to securing an EHC plan. The local authority will do an assessment to decide whether a child needs an EHC plan
- **EHC plan** – an education, health and care (EHC) plan is a legally-binding document that sets out a child's needs and the provision that will be put in place to meet their needs
- **First-tier tribunal / SEND tribunal** – a court where you can appeal against the local authority's decisions about EHC needs assessments or plans and against discrimination by a school or local authority due to SEN
- **Graduated approach** – an approach to providing SEN support in which the school provides support in successive cycles of assessing the pupil's needs, planning the provision, implementing the plan, and reviewing the impact of the action on the pupil
- **Intervention** – a short-term, targeted approach to teaching a pupil with a specific outcome in mind
- **Local offer** – information provided by the local authority that explains what services and support are on offer for pupils with SEN in the local area
- **Outcome** – target for improvement for pupils with SEN. These targets don't necessarily have to be related to academic attainment
- **Reasonable adjustments** – changes that the school must make to remove or reduce any disadvantages caused by a child's disability
- **SENCO** – the special educational needs co-ordinator
- **SEN** – special educational needs
- **SEND** – special educational needs and disabilities
- **SEND Code of Practice** – the statutory guidance that schools must follow to support children with SEND
- **SEN information report** – a report that schools must publish on their website, that explains how the school supports pupils with SEN
- **SEN support** – special educational provision that meets the needs of pupils with SEN
- **Transition** – when a pupil moves between years, phases, schools or institutions or life stages